

Completed image



Example arrangement




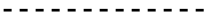
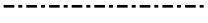


You will need

- Scissors, glue, ruler, dried-up ballpoint pen, rounded pencil (or similar object)

Assembly tips


- Begin by placing the ruler against the fold lines and drawing the empty ballpoint pen over them so that it is easy to make clean folds.
- Shaping the stem by rounding it using the rounded pencil or similar object will make it easier to roll.

Lines and icons

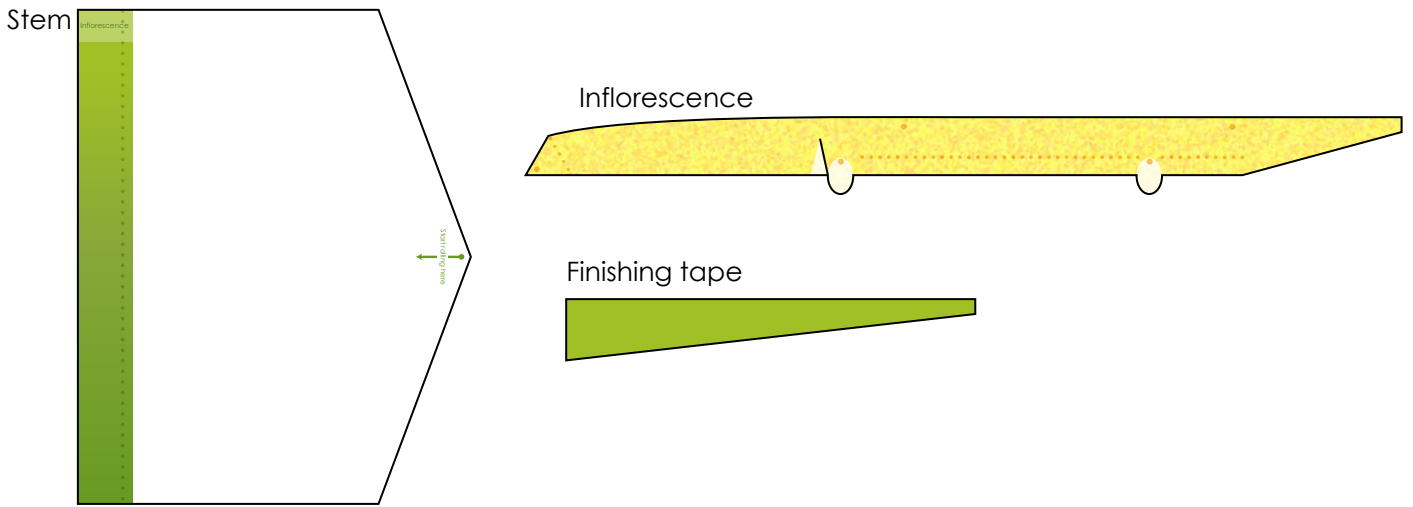
- Scissors line 
- Mountain fold 
- Valley fold 
- Indicator line 
- Tips 

Caution

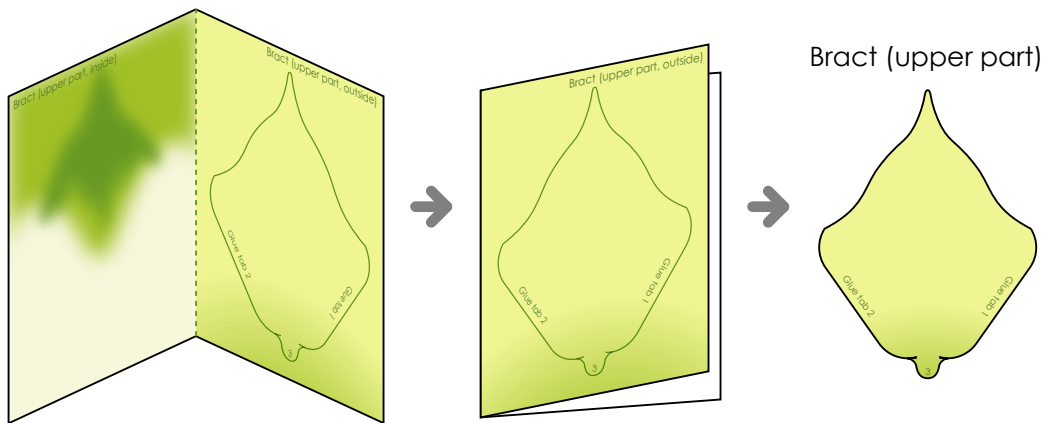
- \*Glue, scissors and other tools and materials may be harmful to children.  
Please keep your work out of the reach of children.

 Cut out the parts

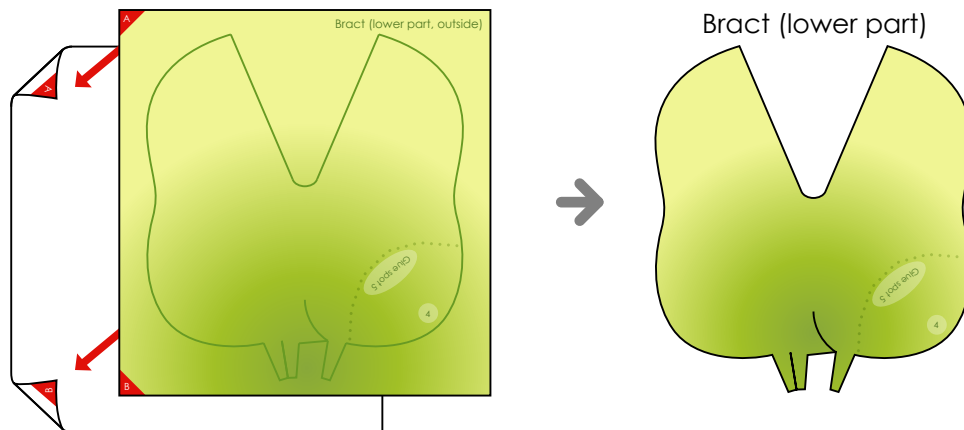
Cut out the parts shown below, along the scissors lines.



Cut out the bract (upper part), along the lines of the square around it, fold it in half and glue together. Then, cut out the bract (upper part) itself.

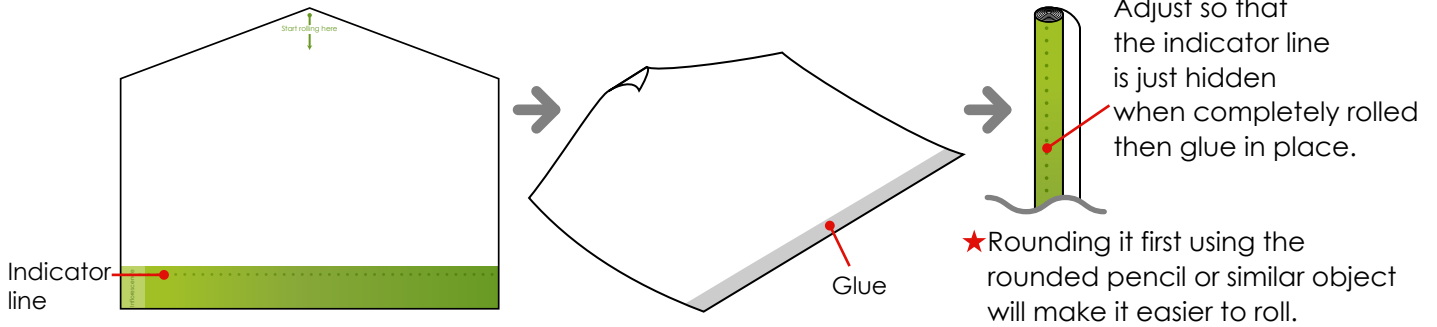


For the bract (lower part), cut out both the inside and outside parts along the lines of the squares around them, and glue them together by matching the corners marked A and B. Then, cut out the bract (lower part) itself.



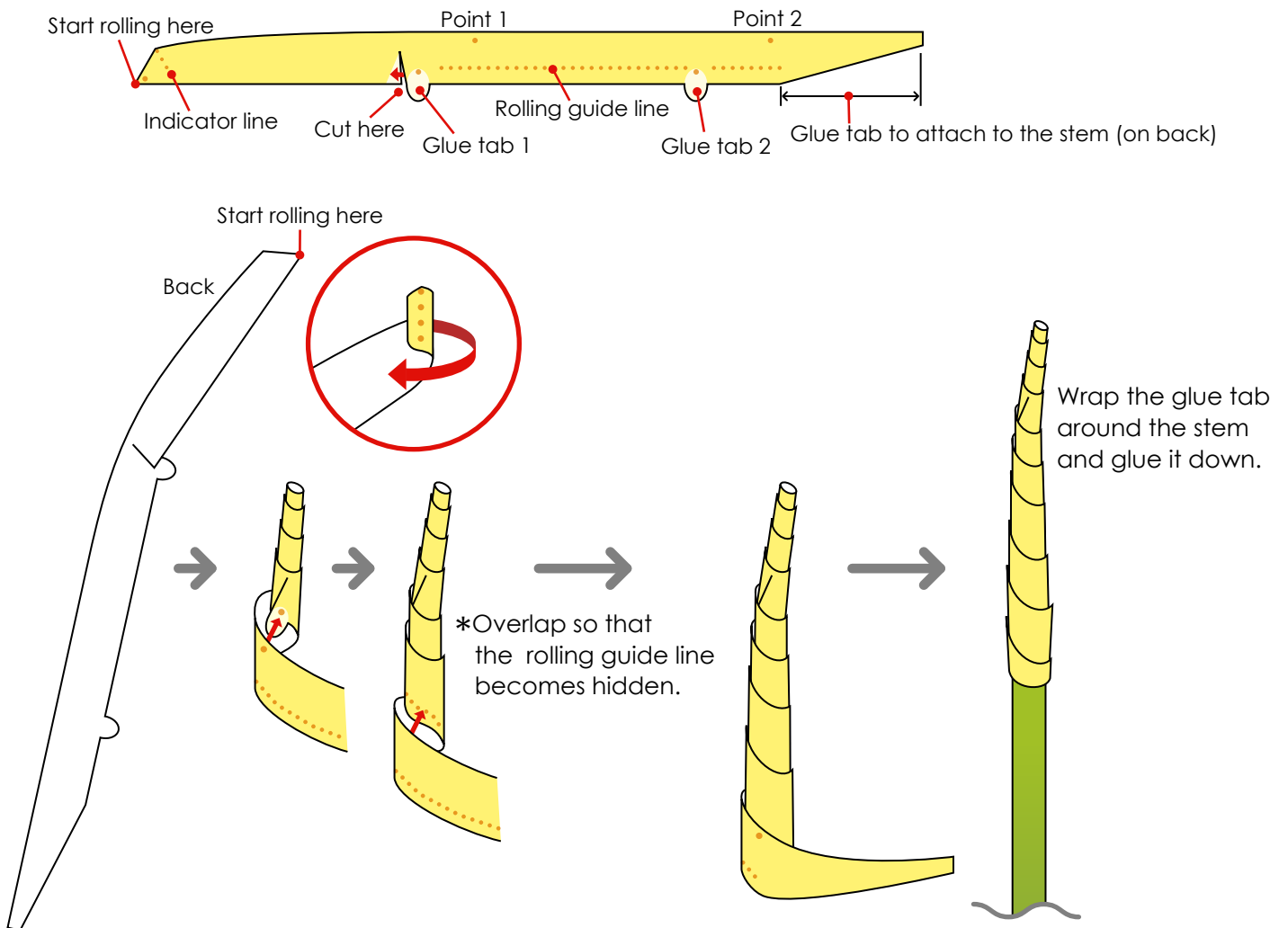
**2** Make the stem

Roll tightly, beginning from the end marked "Start rolling here."



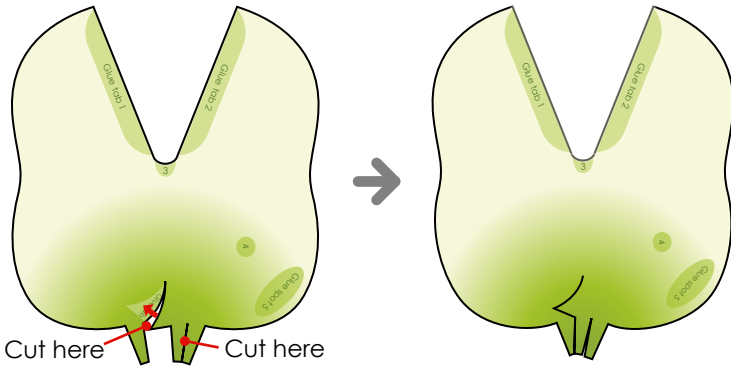
**3** Make the inflorescence

First, roll the piece up tightly, beginning at the "Start rolling here" point and rolling parallel to the guide line. Unroll the piece and attach the slots together, then roll it up again from the "Start rolling here" point. As you roll, glue "Glue tab 1" to "Point 1" at the back, and glue "Glue tab 2" to "Point 2" at the end.

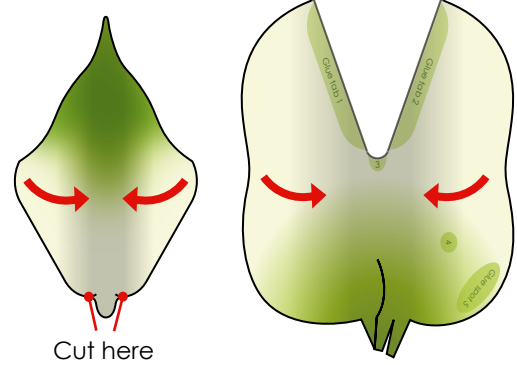


4 Make the bract

Attach the glue spots on the bract (lower part) together.



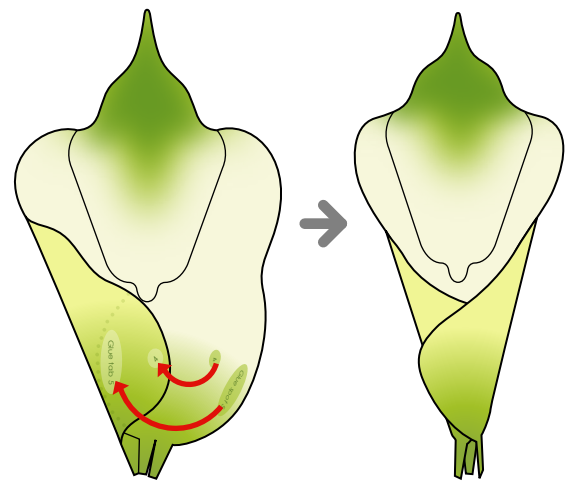
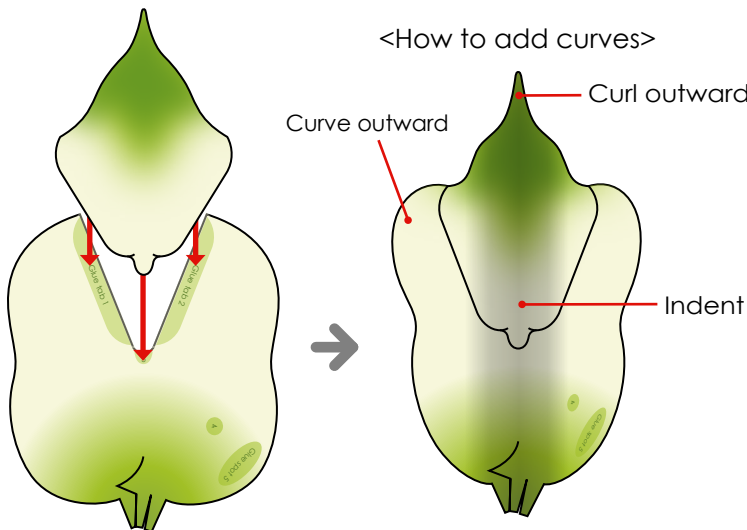
Curl the upper and lower parts of the bract inwards.



Attach glue spots 1, 2 and 3 in order, and add curves.  
\*Attach glue spots 1, 2 and 3 to the spot with the same number.

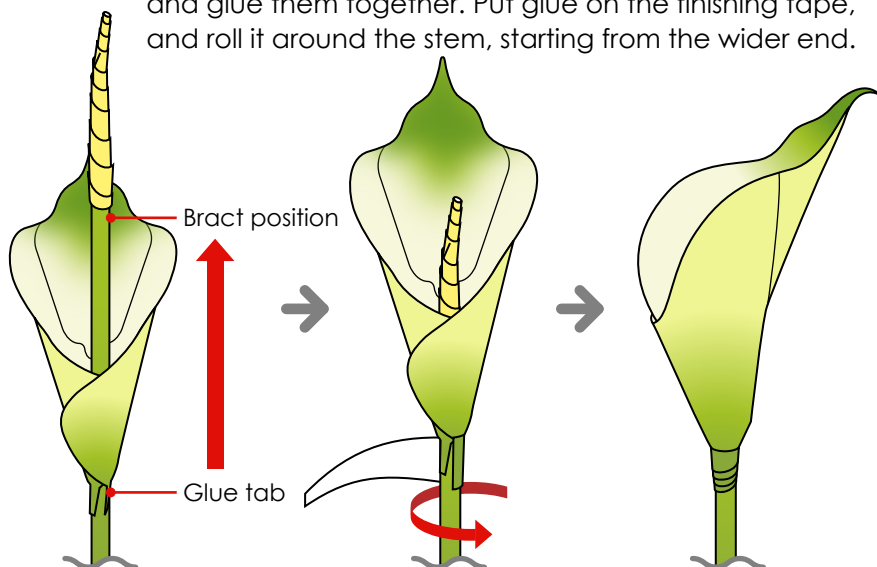
Attach the number 4 spots on the inside and outside, and "glue spot 5."

<How to add curves>



Slide the bract onto the stem you made in step 3, and glue them together. Put glue on the finishing tape, and roll it around the stem, starting from the wider end.

Pull the bract into shape after attaching.



<Complete>