



● View of completed model

Drum Set

Scale : 1 / 7

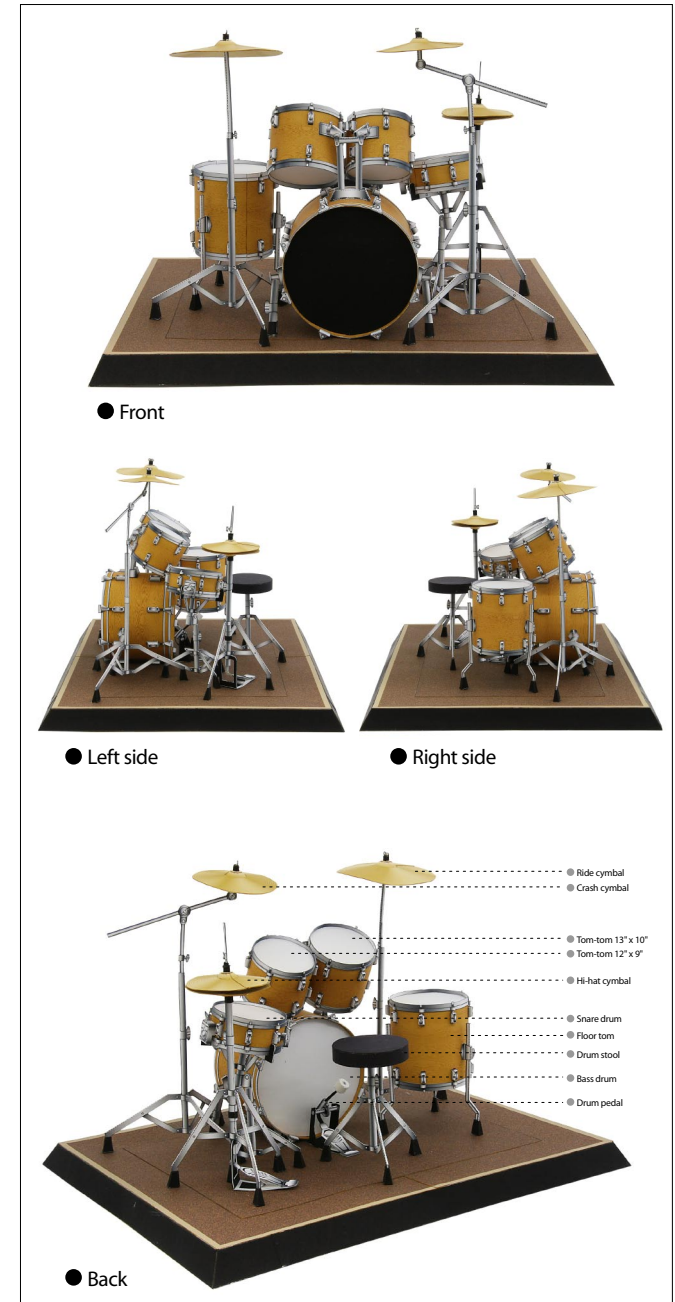
A drum set is a collection of various types of drums, cymbals and other percussion instruments that are lined up in a formation that makes them easily played by one person. The number and type of instruments included can be arranged according to the performer's preference or characteristics of the music. The performer usually plays seated on a stool. The idea for the drum set is said to have originated in military bands, when a cymbal was placed on top of the bass drum to make it easier for the performer holding it. This was followed by the idea to use a pedal to play the bass drum with the foot, and the invention of the hi-hat, two cymbals on top of each other that are clashed together. These adaptations have resulted in the drum set up and beat style we know today.

*This model was designed for Papercraft and may differ from the original in some respects.

■ Parts sheet (Pattern) : Twenty-two A4 sheets (No.1~No.22)

■ No. of Parts : 384

*Build the model by carefully reading the Assembly Instructions, in the parts sheet page order.



● Front

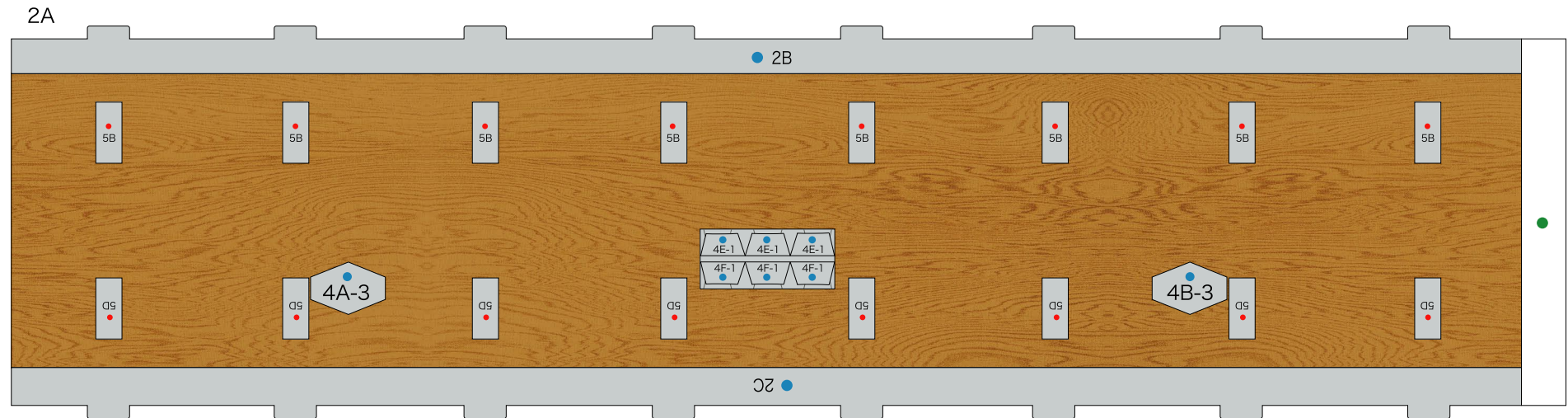
● Left side

● Right side

● Back

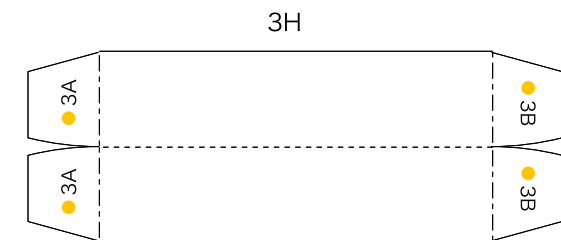
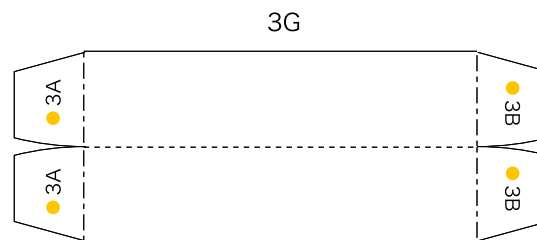
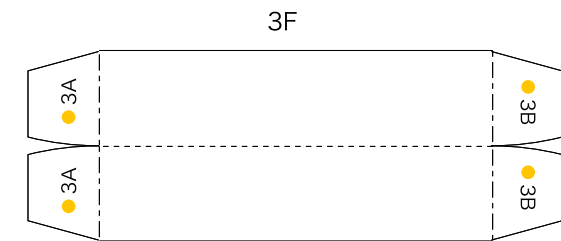
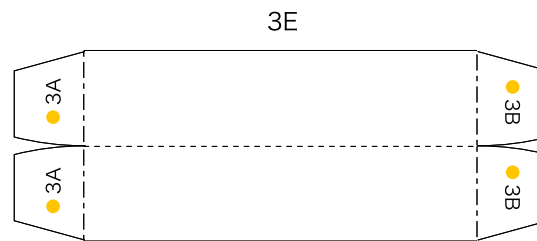
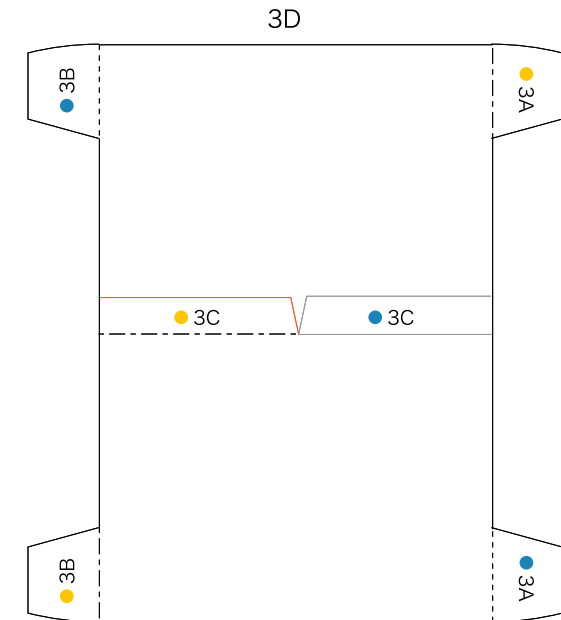
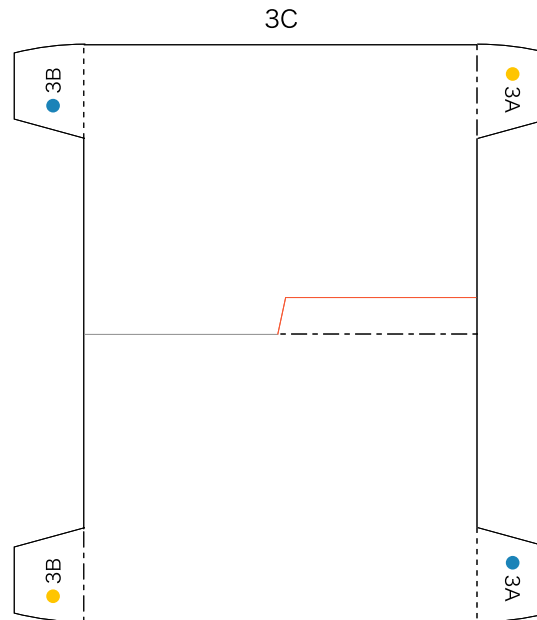
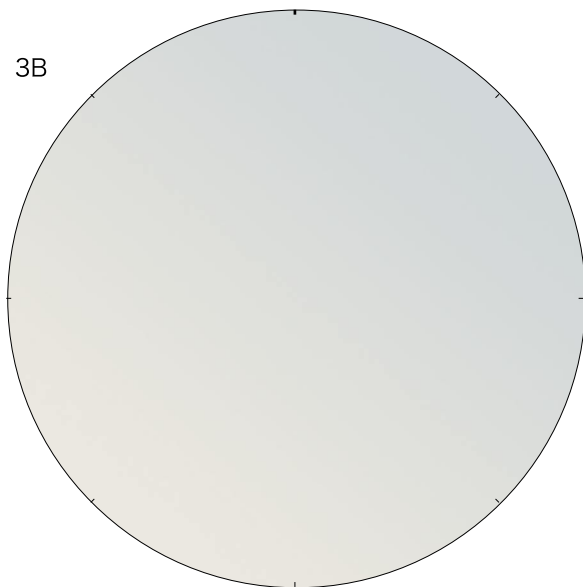
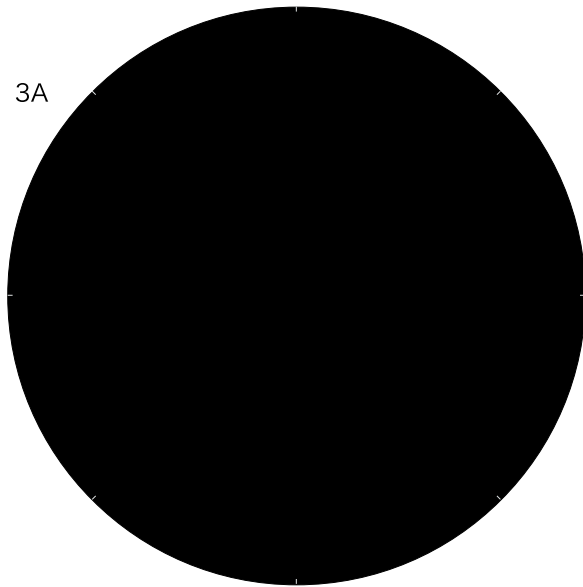
- Ride cymbal
- Crash cymbal
- Tom-tom 13" x 10"
- Tom-tom 12" x 9"
- Hi-hat cymbal
- Snare drum
- Floor tom
- Drum stool
- Bass drum
- Drum pedal

Bass drum



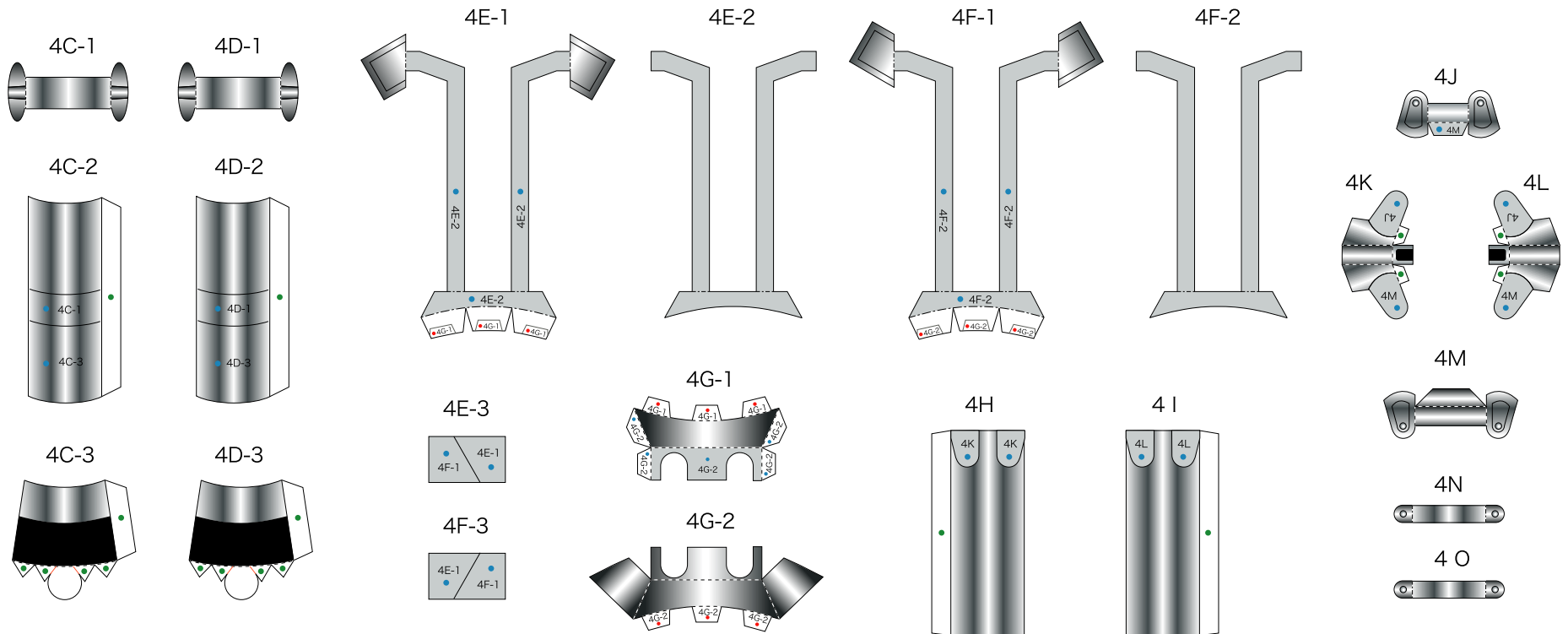
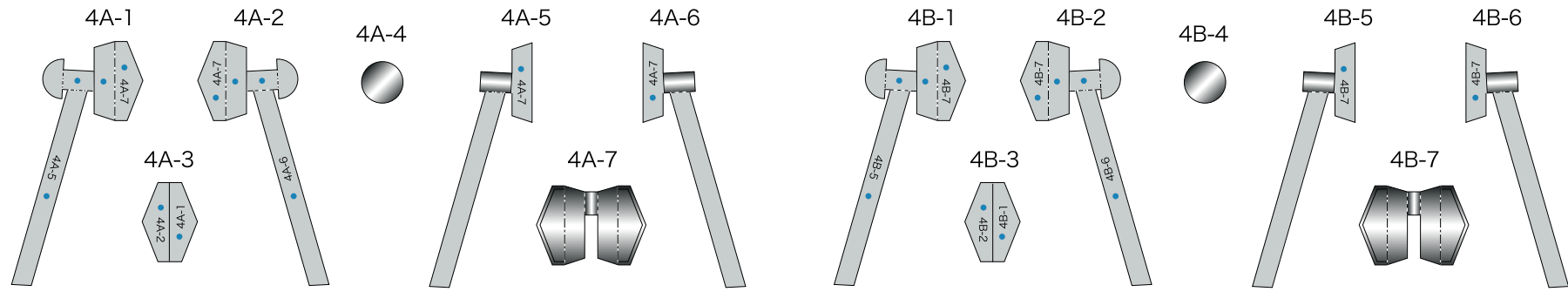
Scissors line
 Mountain fold
 Valley fold
 Cut in line
 Cut out

Bass drum



Scissors line
 Mountain fold
 Valley fold
 Cut in line
 Cut out

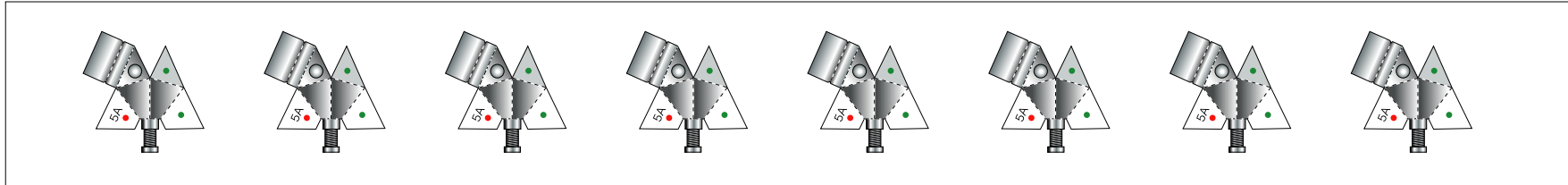
Bass drum



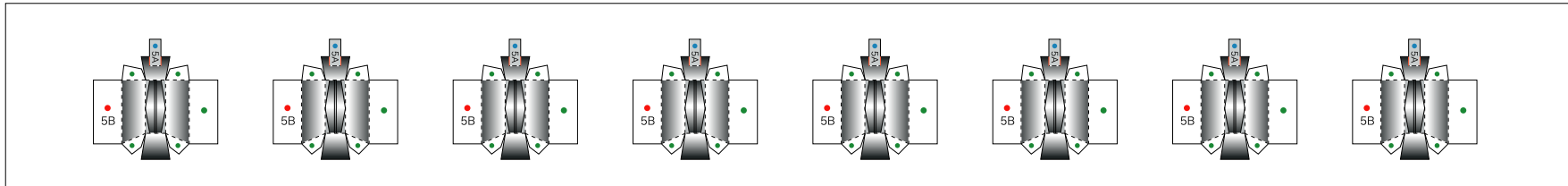
Scissors line
 Mountain fold
 Valley fold
 Cut in line
 Cut out

Bass drum

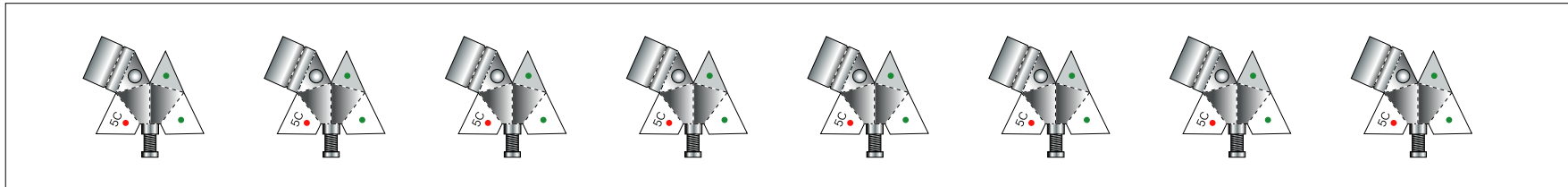
5A



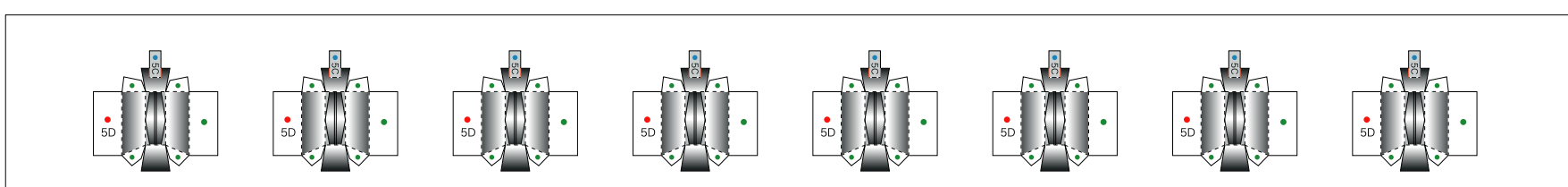
5B



5C

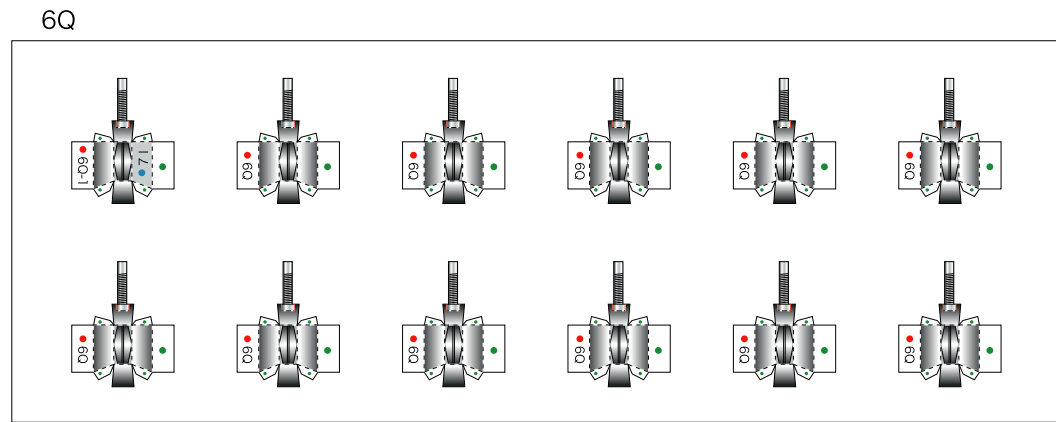
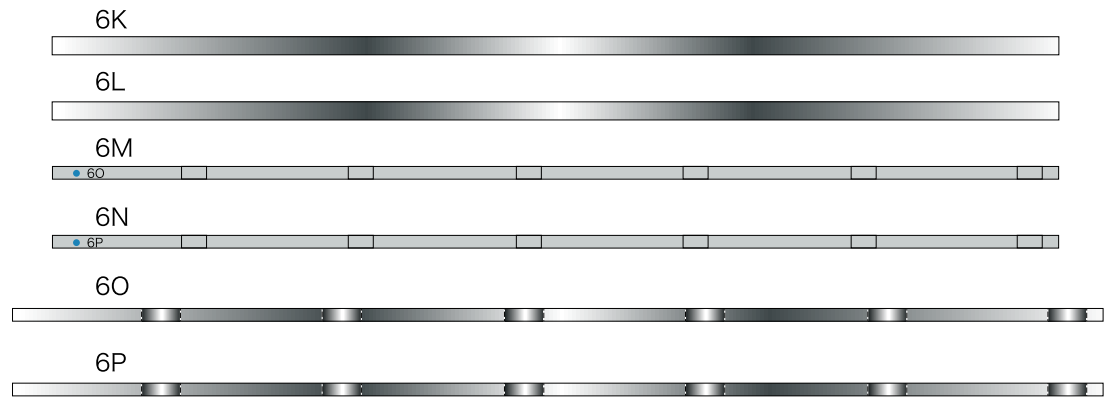
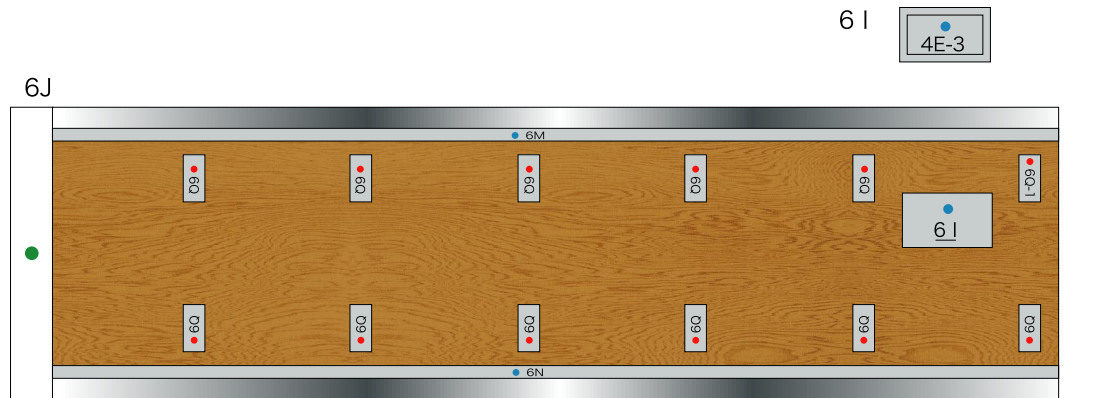
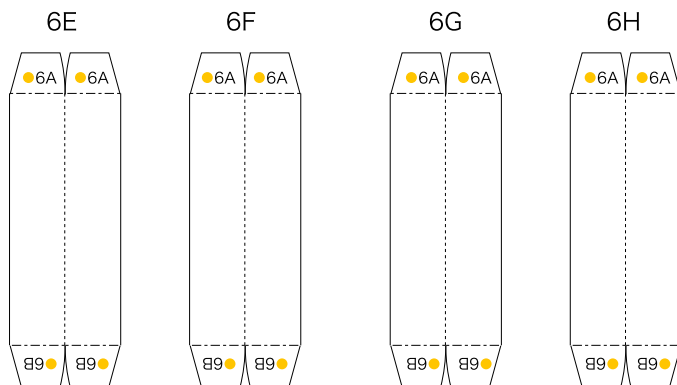
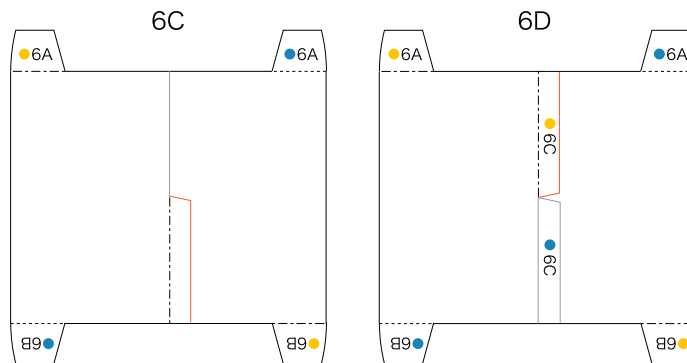
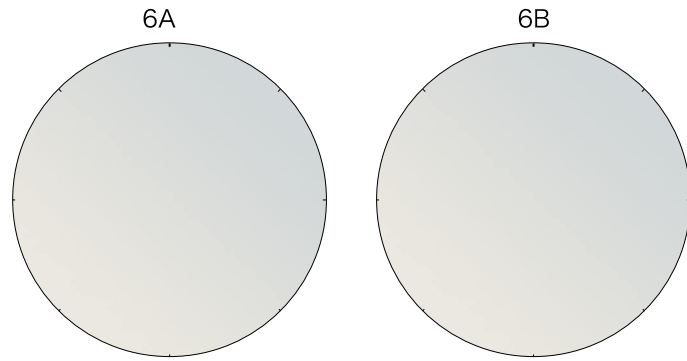


5D



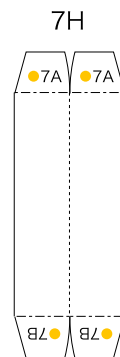
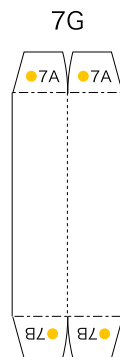
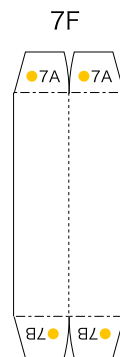
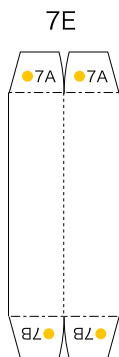
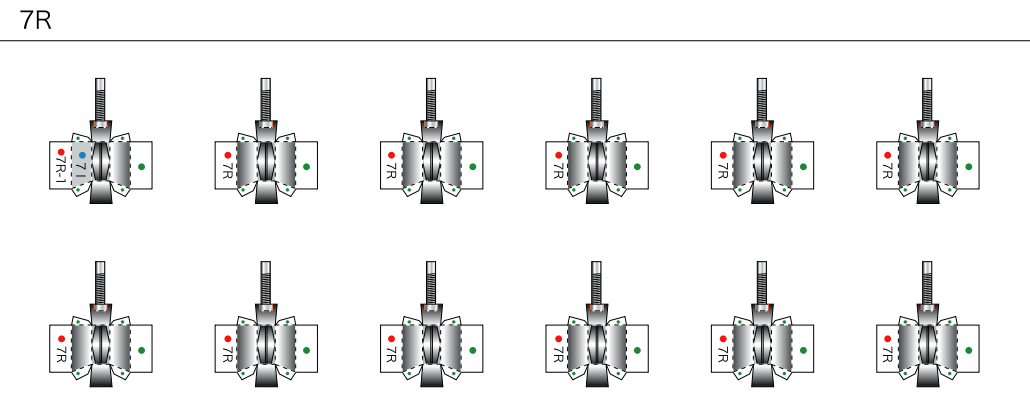
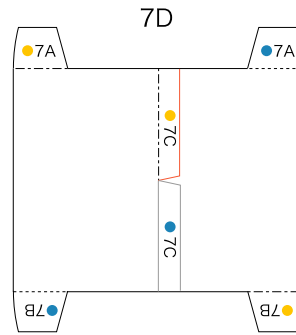
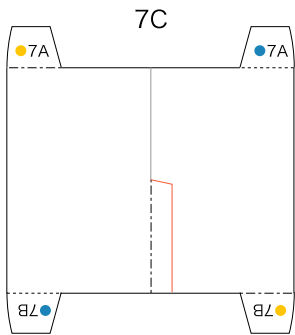
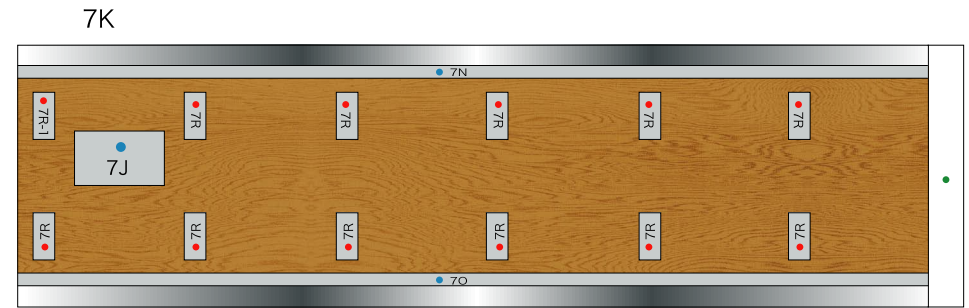
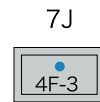
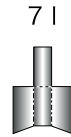
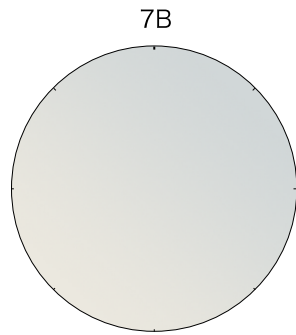
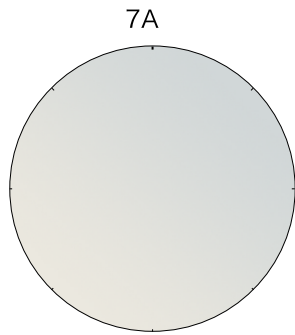
Scissors line
 Mountain fold
 Valley fold
 Cut in line
 Cut out

Tom-tom 13" x 10"



Scissors line
 Mountain fold
 Valley fold
 Cut in line
 Cut out

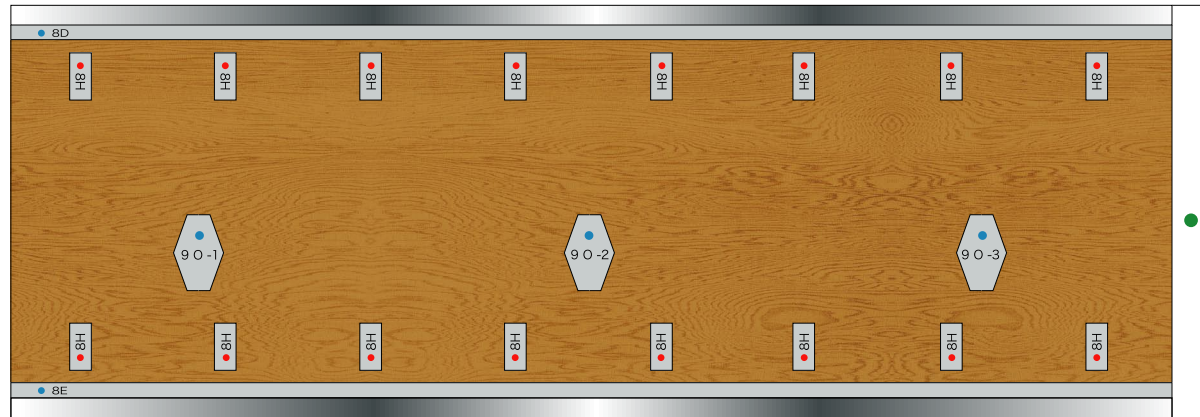
Tom-tom 12" x 9"



Scissors line
 Mountain fold
 Valley fold
 Cut in line
 Cut out

Floor tom

8A



8B



8C



8D



8E



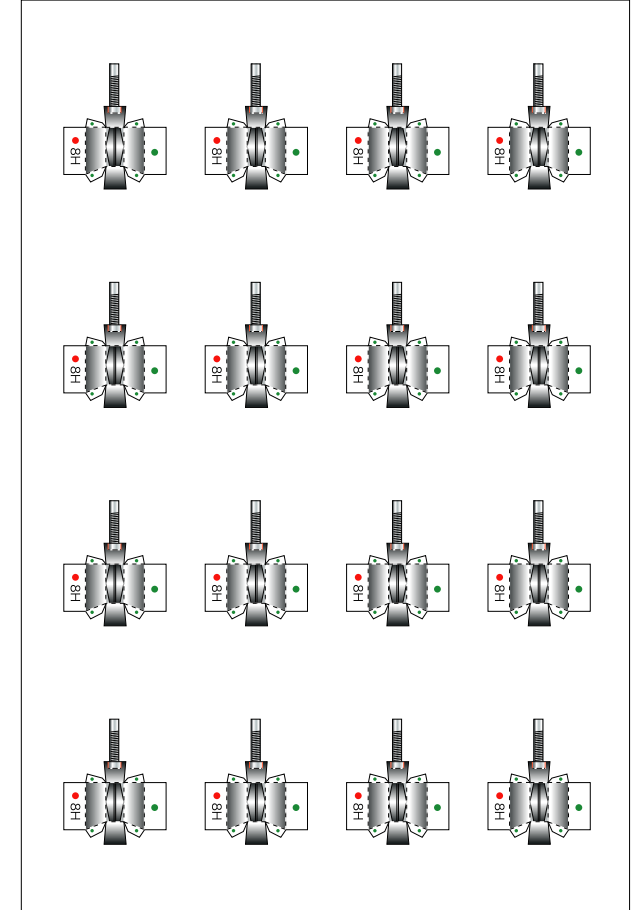
8F



8G

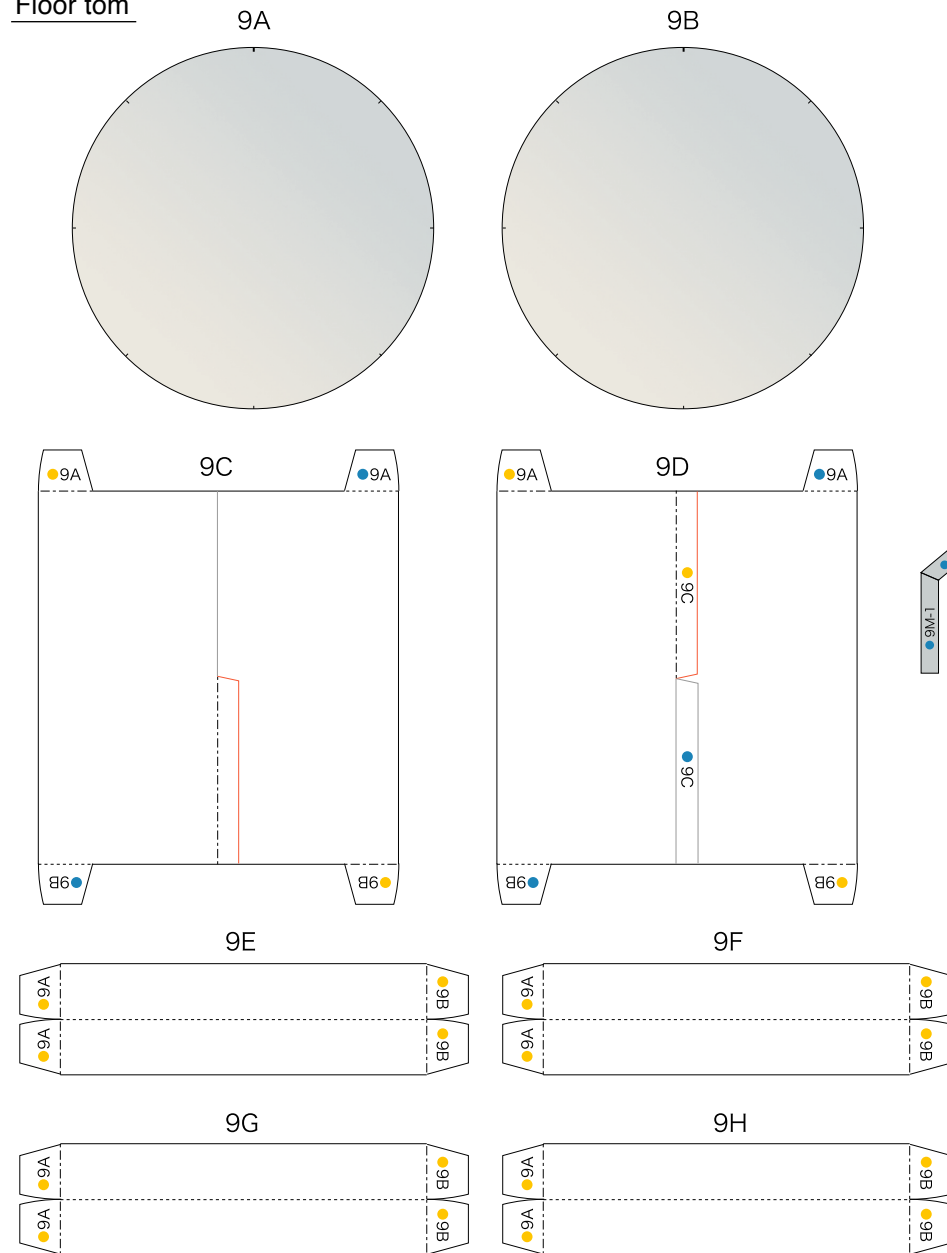


8H

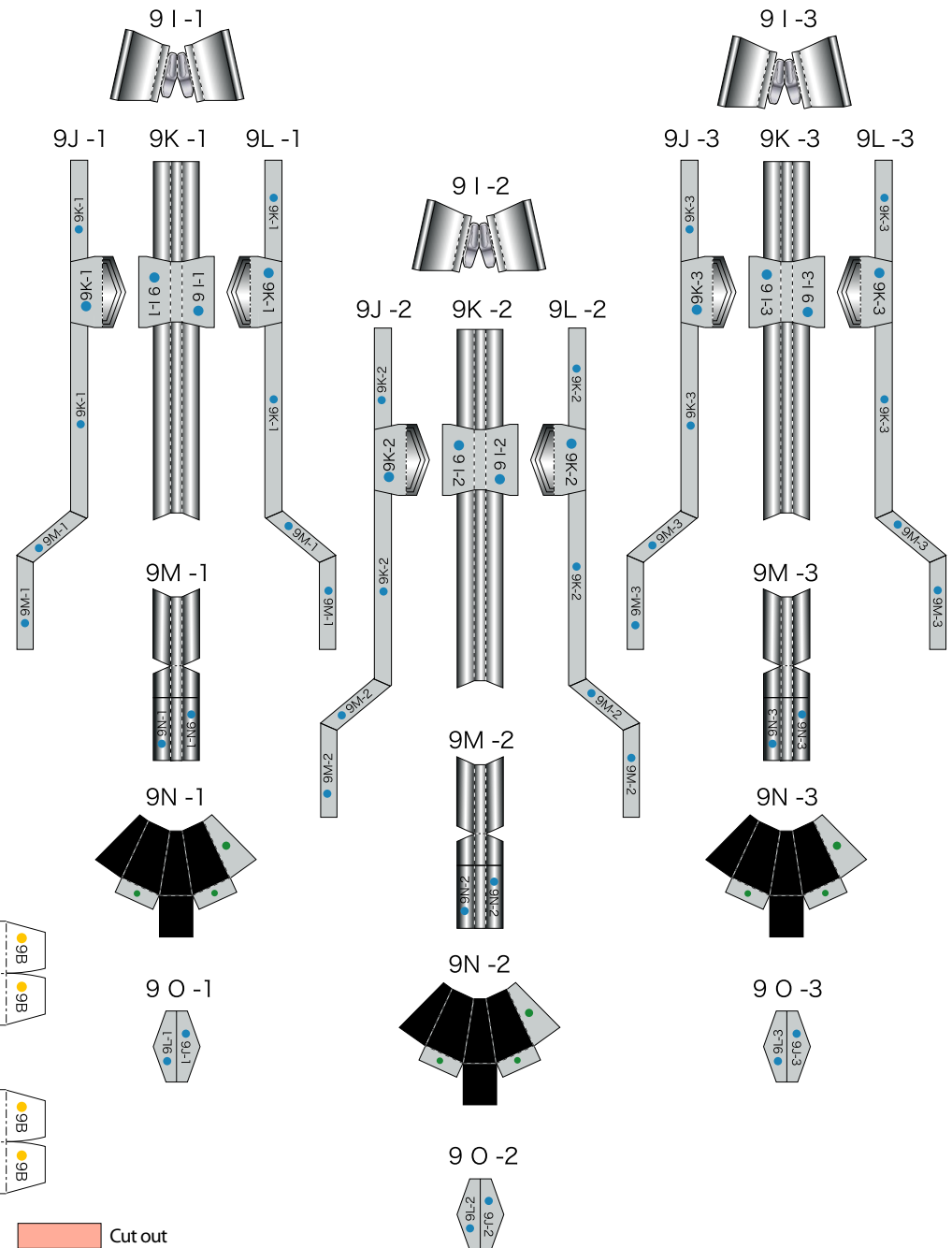


Scissors line
 Mountain fold
 Valley fold
 Cut in line
 Cut out

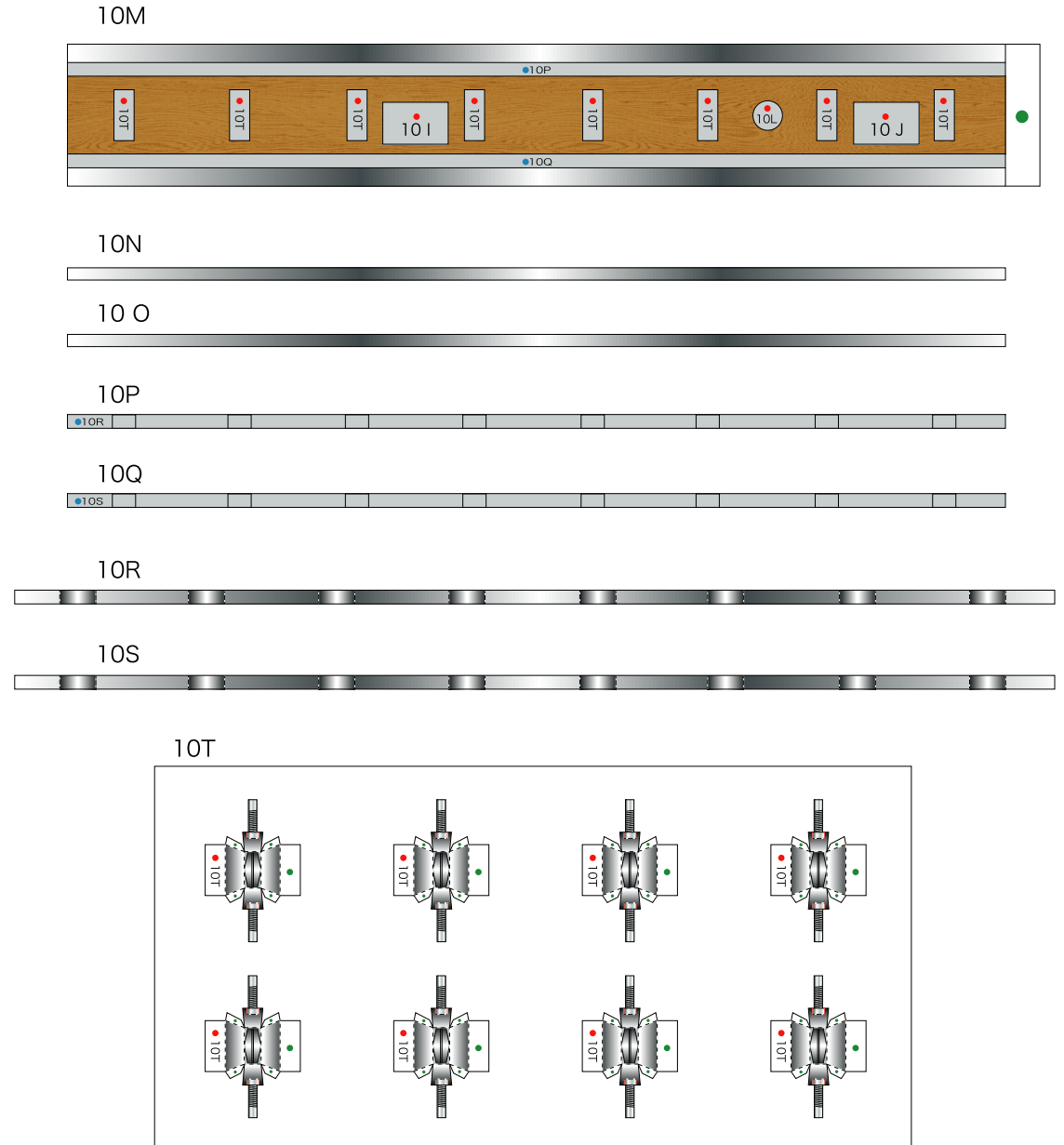
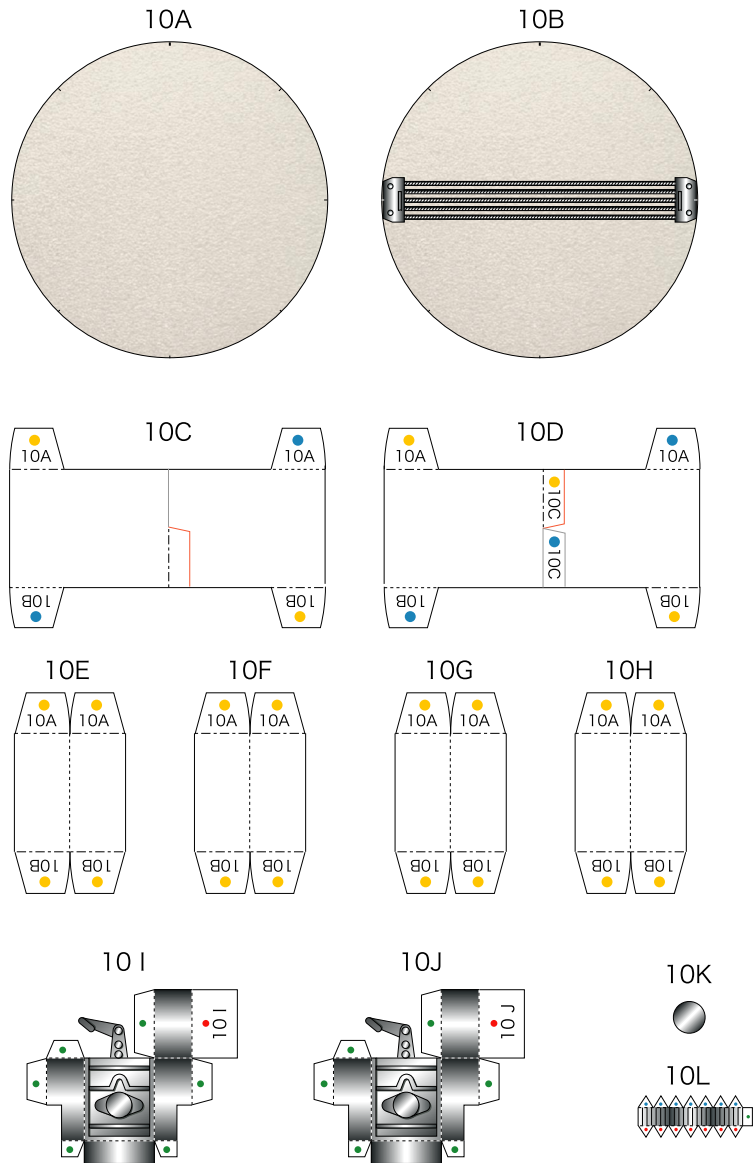
Floor tom



— Scissors line - - - - - Mountain fold - - - - - Valley fold ——— Cut in line Cut out

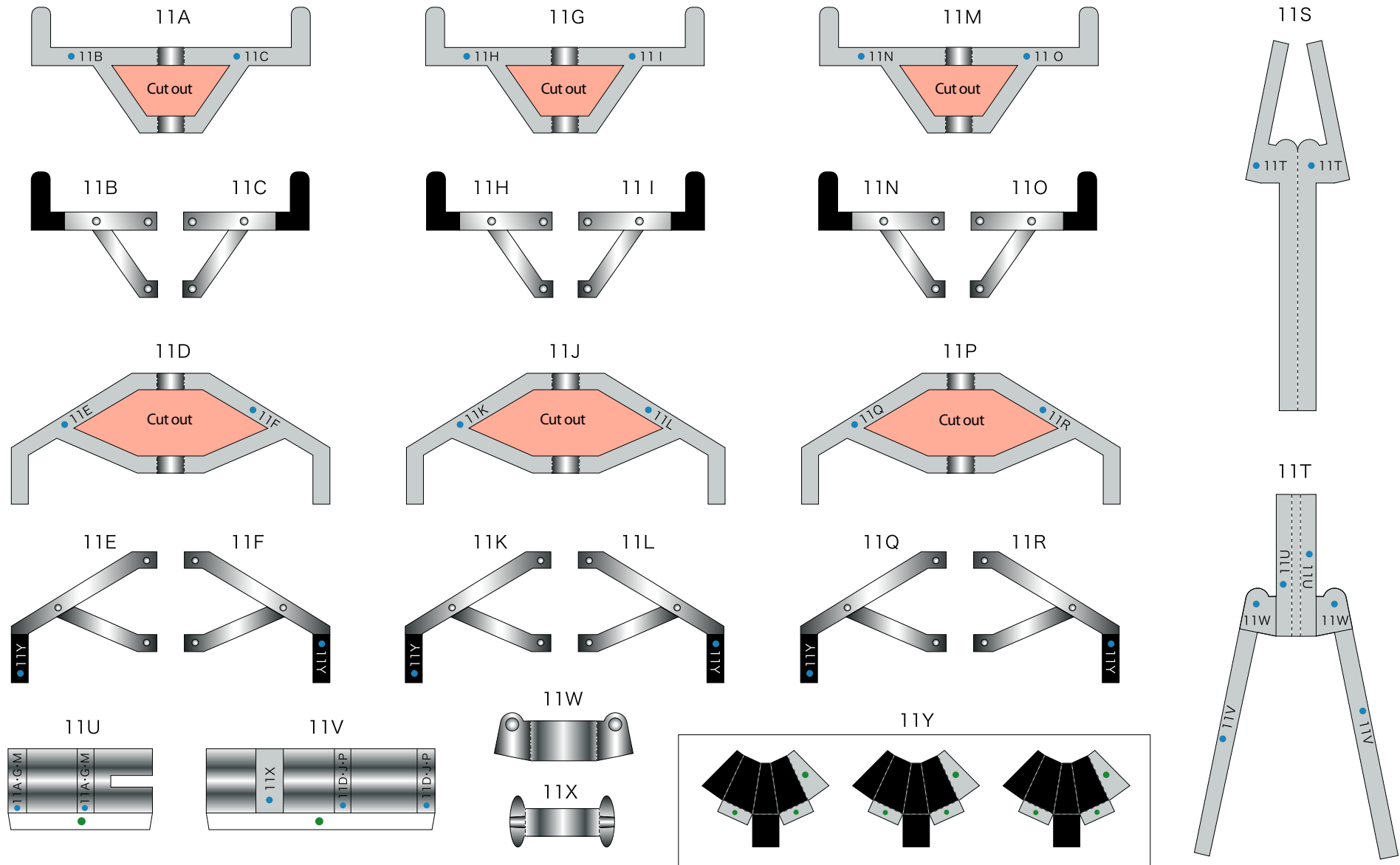


Snare drum



Scissors line
 Mountain fold
 Valley fold
 Cut in line
 Cut out

Snare drum



Scissors line
 Mountain fold
 Valley fold
 Cut in line
 Cut out