



A mikoshi is a Japanese portable shrine that is used in festivals to transport the spirit of a deity. Mikoshi are often built to resemble an actual shrine. They are usually made from wood, with extravagant gold and silver decorations and beautiful engravings, and a phoenix or other creature on the roof. The two poles that run through it make it possible for a group of people to carry it, bearing it on their shoulders as they transport it around at the festival.

*This model was designed for Papercraft and may differ from the original in some respects.

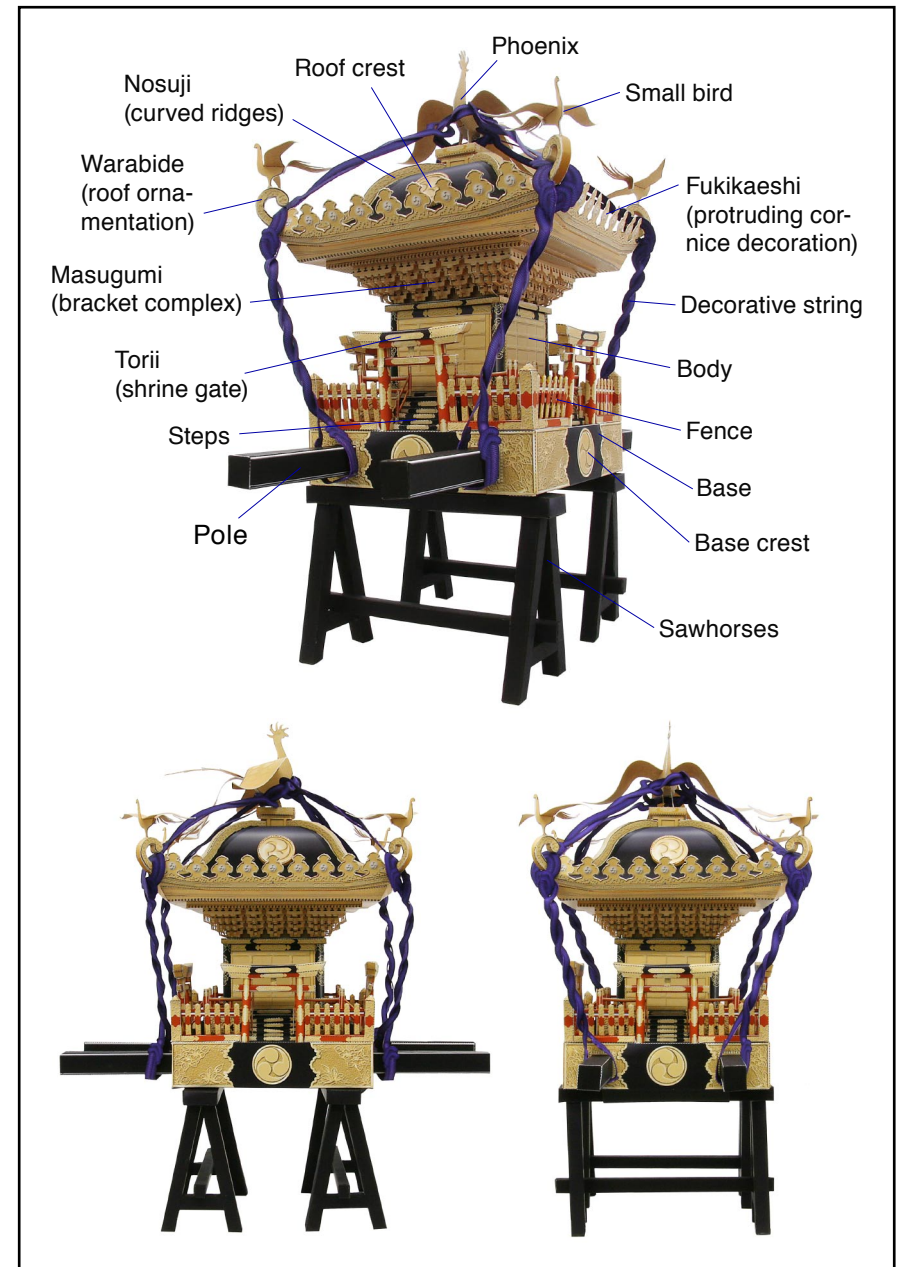
*In this picture, the edges of the completed model have been touched up with paint.

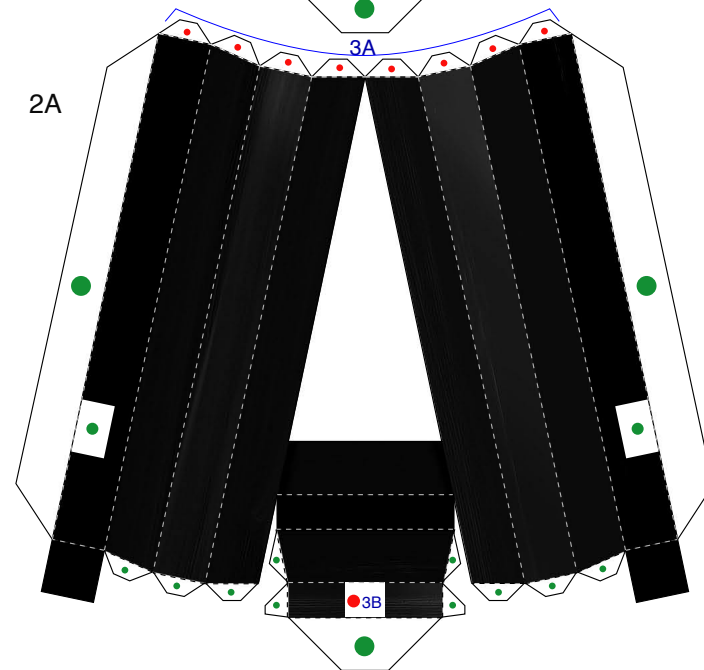
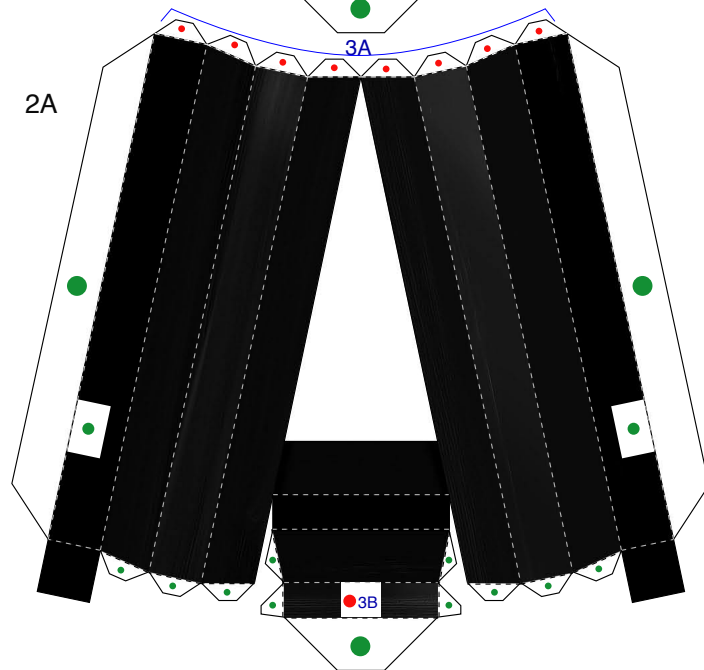
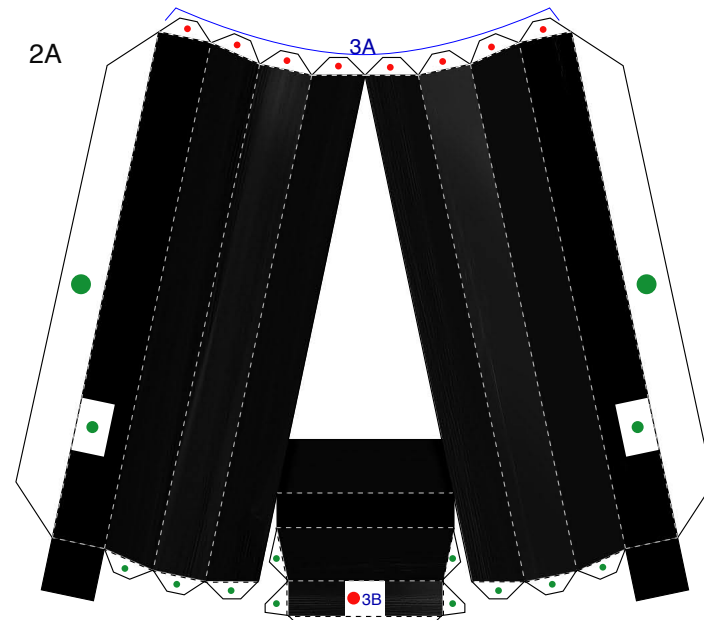
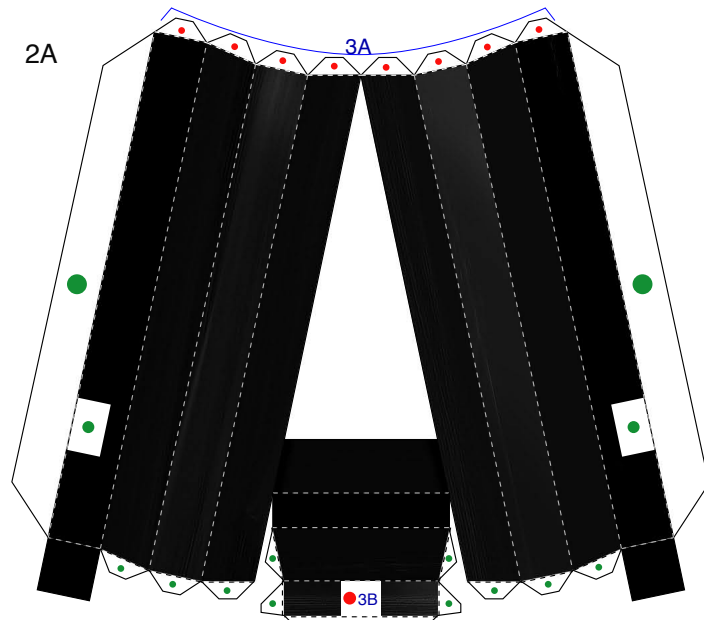
■ **Parts list (Pattern) : Eighteen A4 sheets (No. 1 to No. 18)**

■ **No. of Parts : 166**

*Build the model by carefully reading the Assembly Instructions , in the parts sheet page order.

*Write down the number on the back of each part as you cut them out.



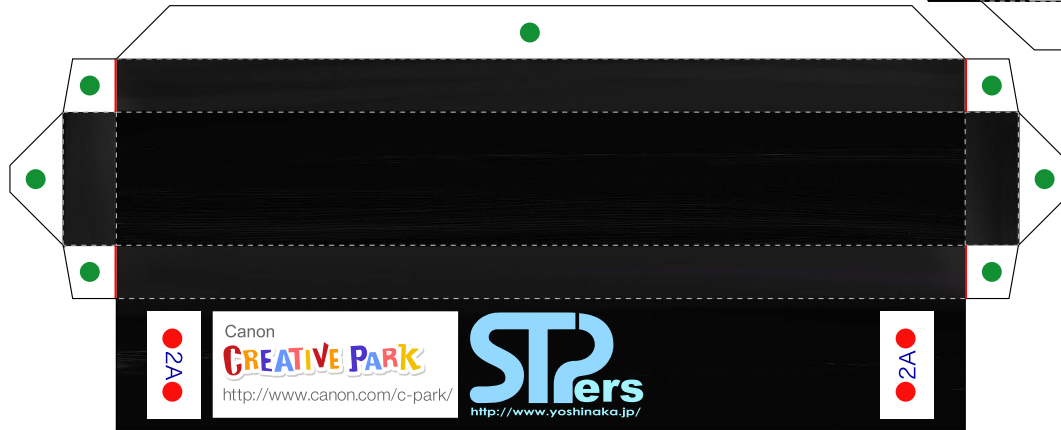




3A



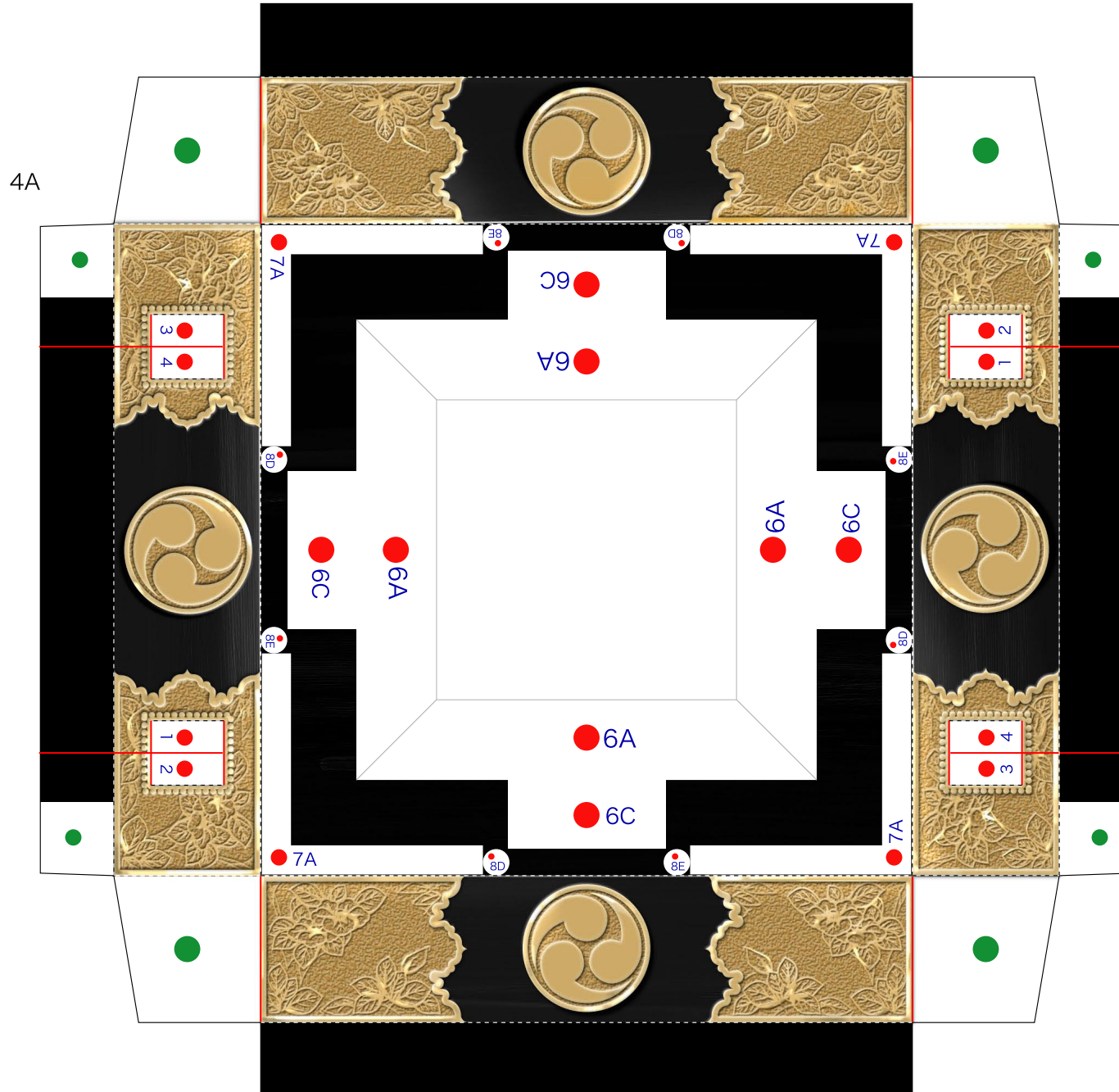
3B



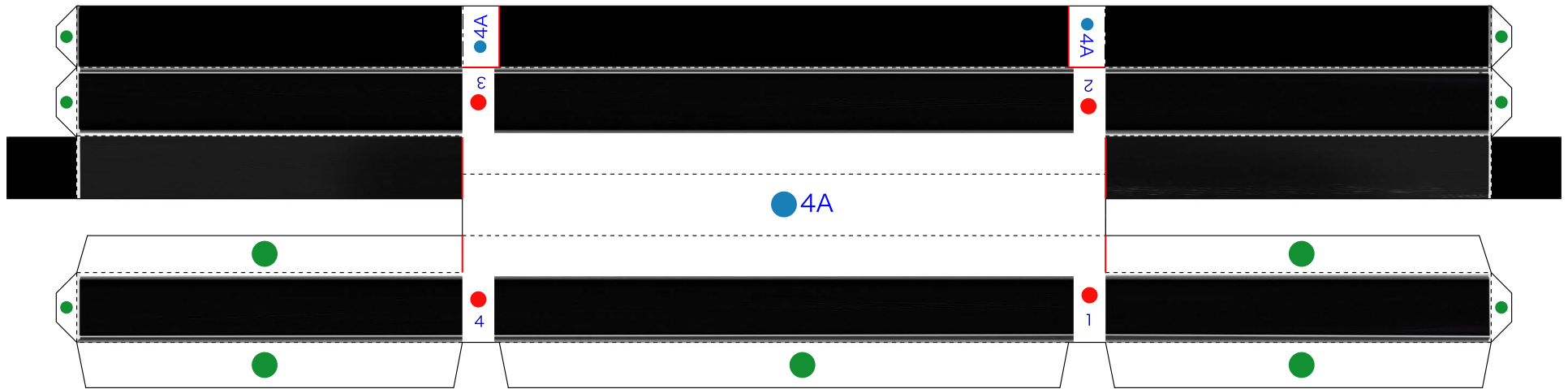
3A



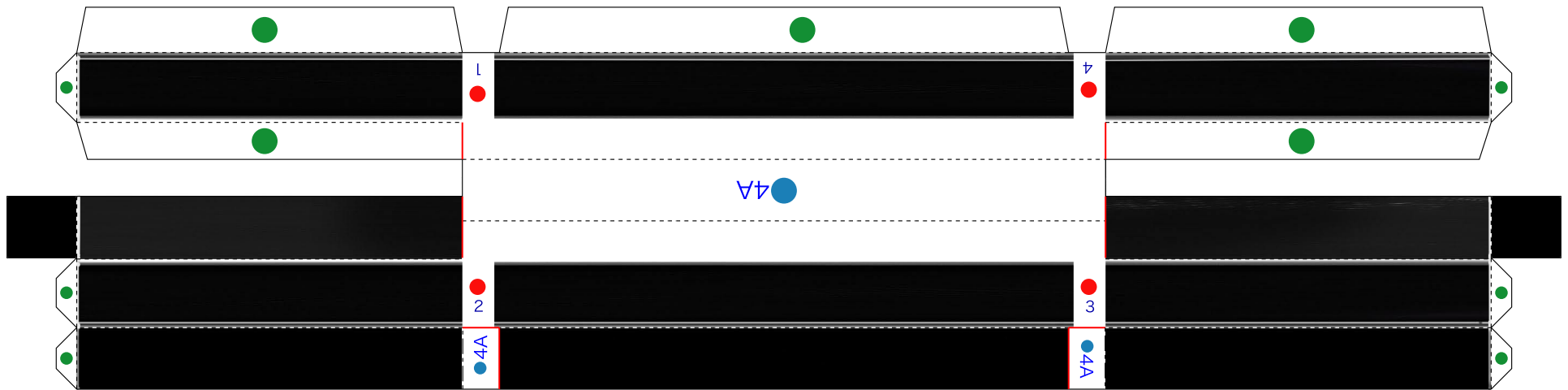
3B

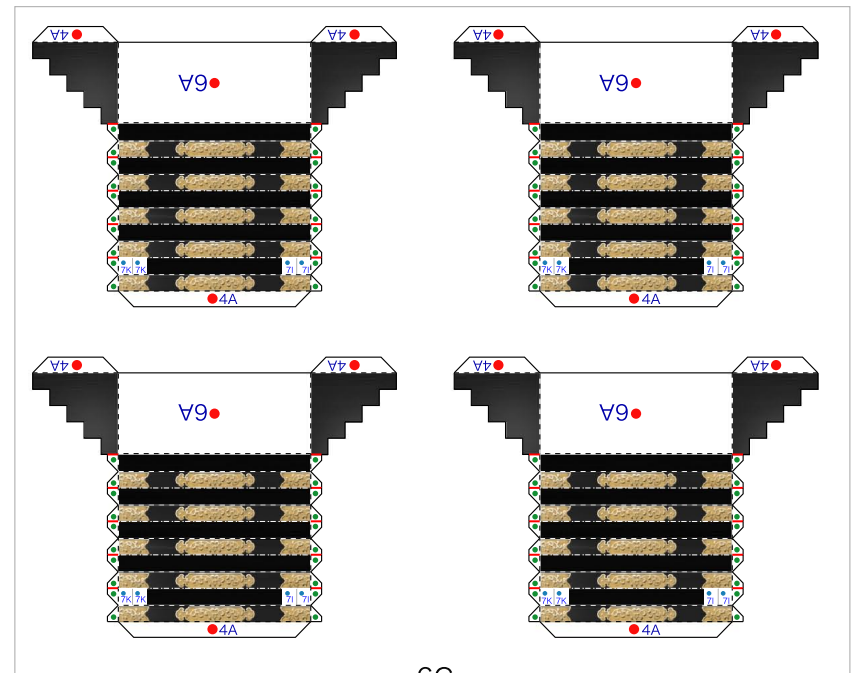
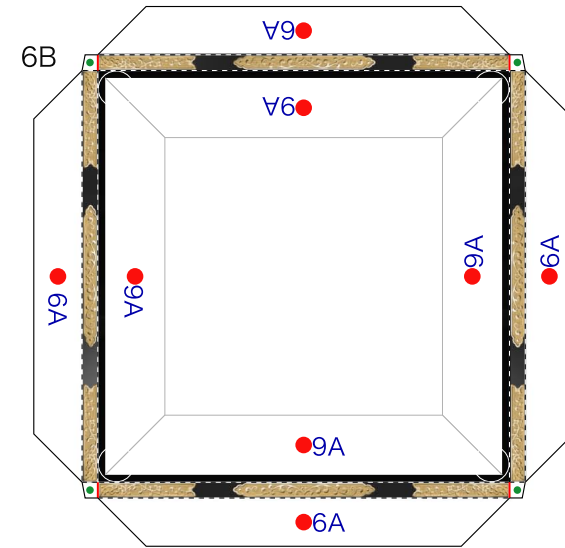
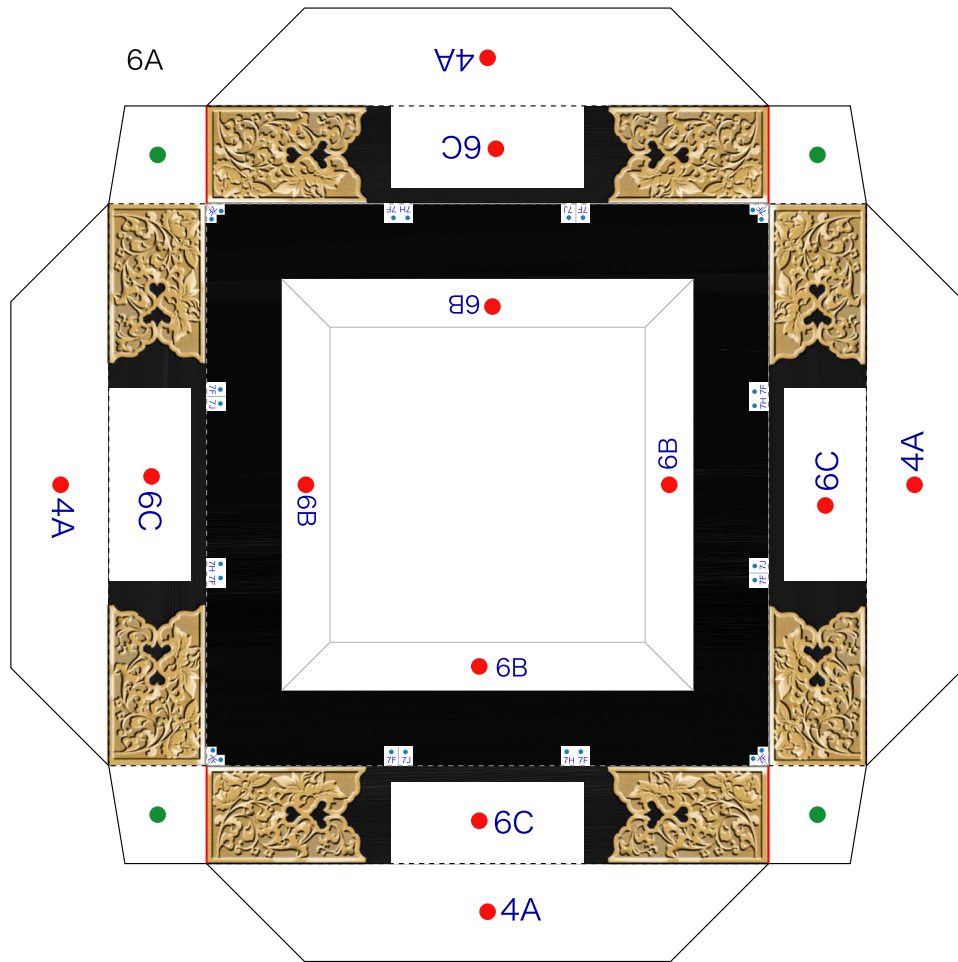


5A

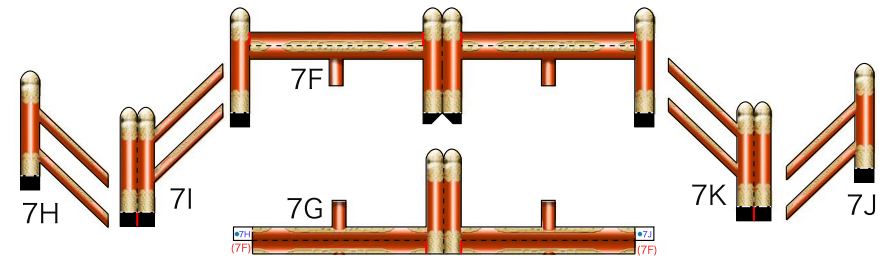
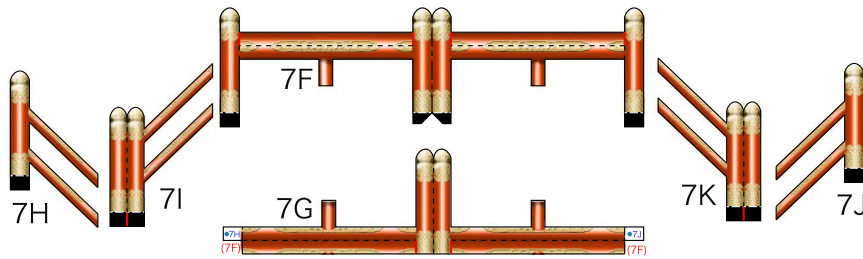
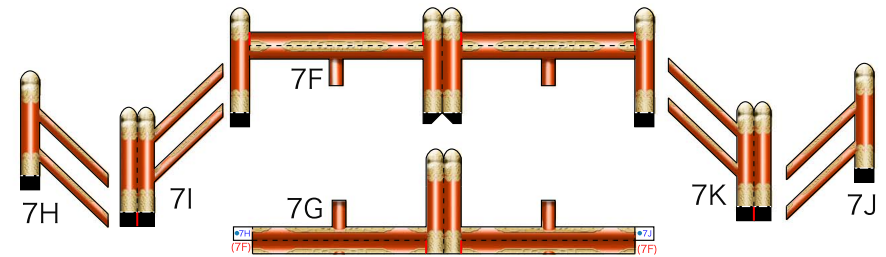
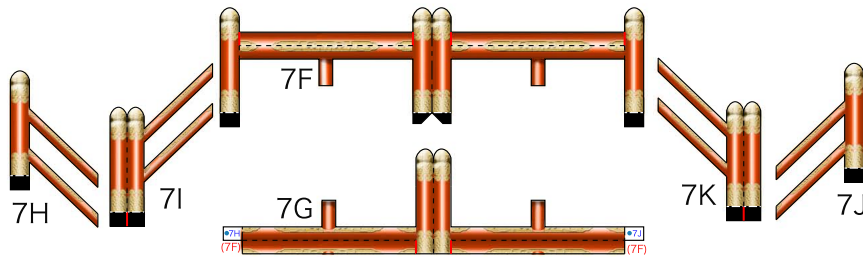
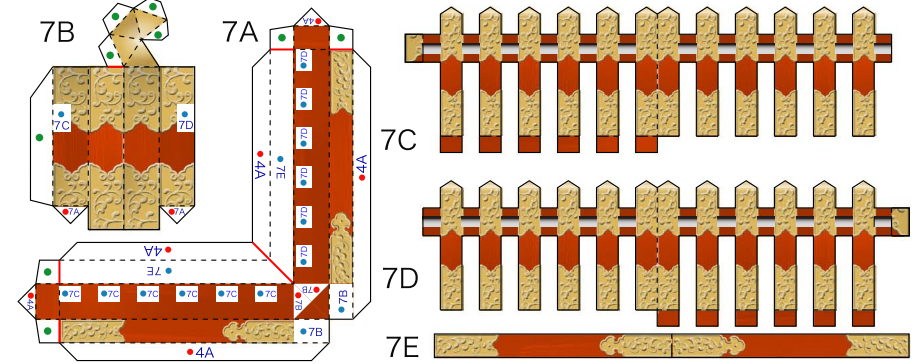
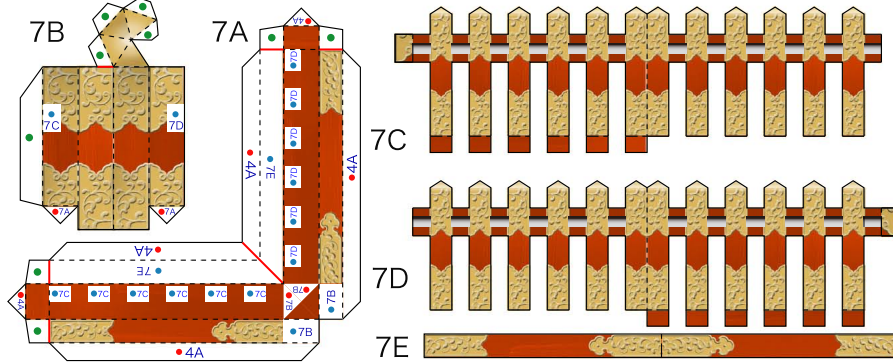
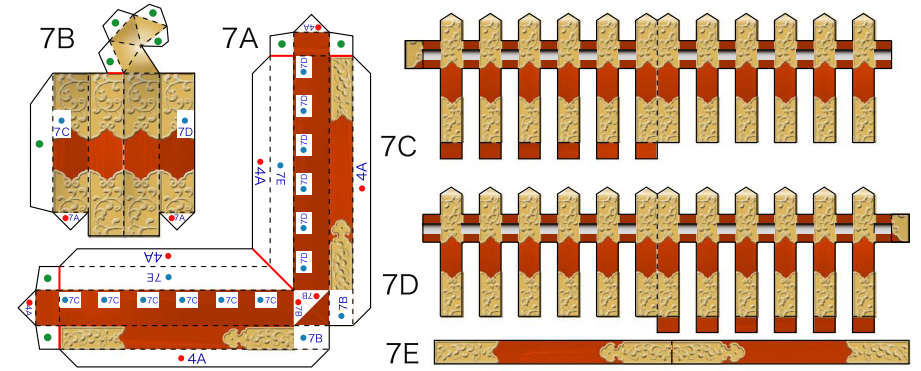
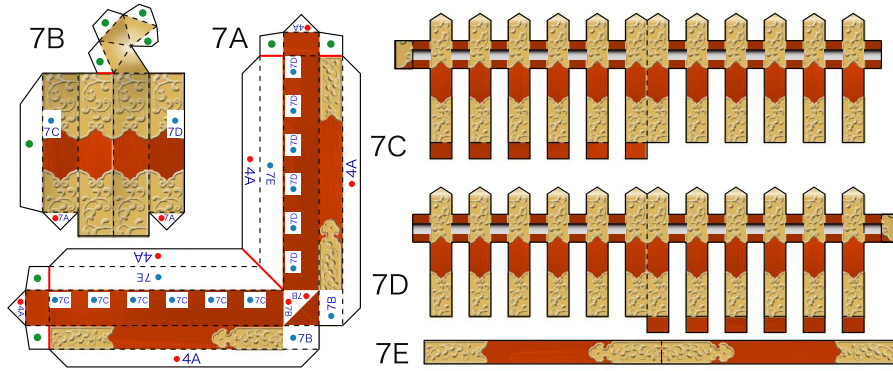


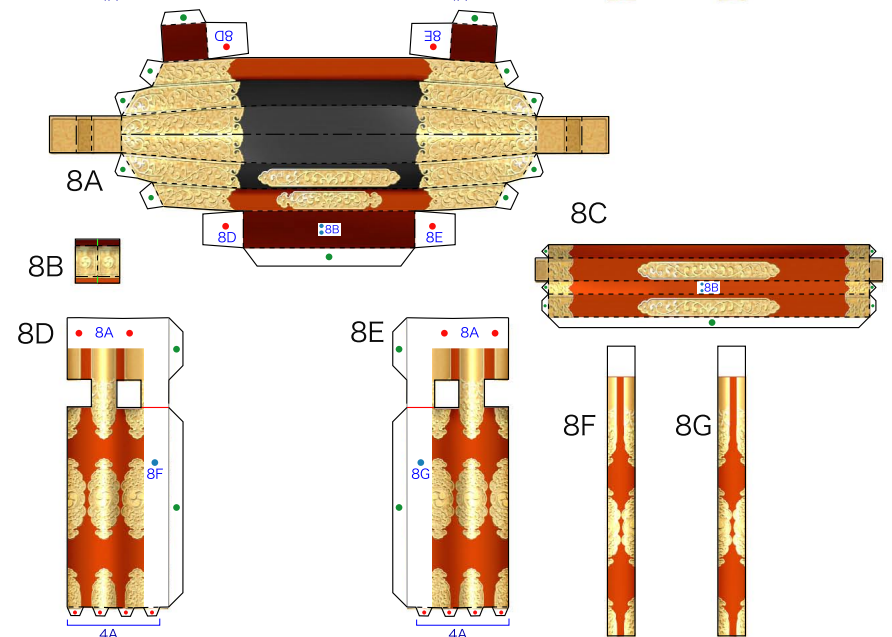
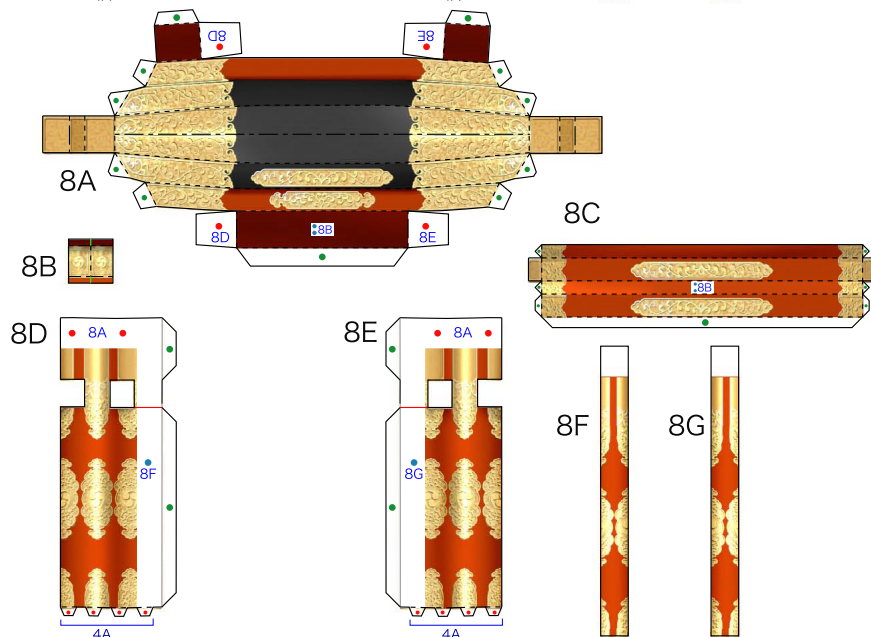
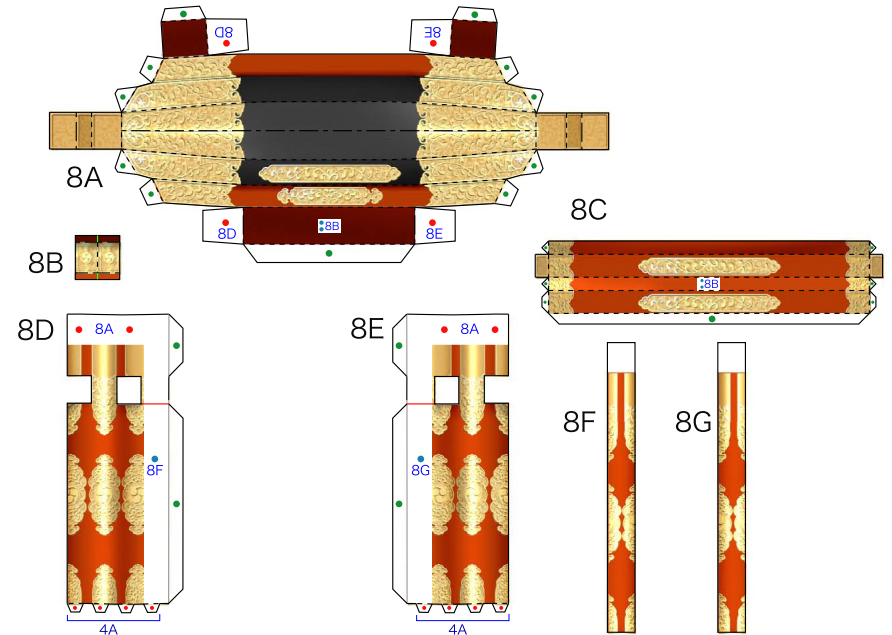
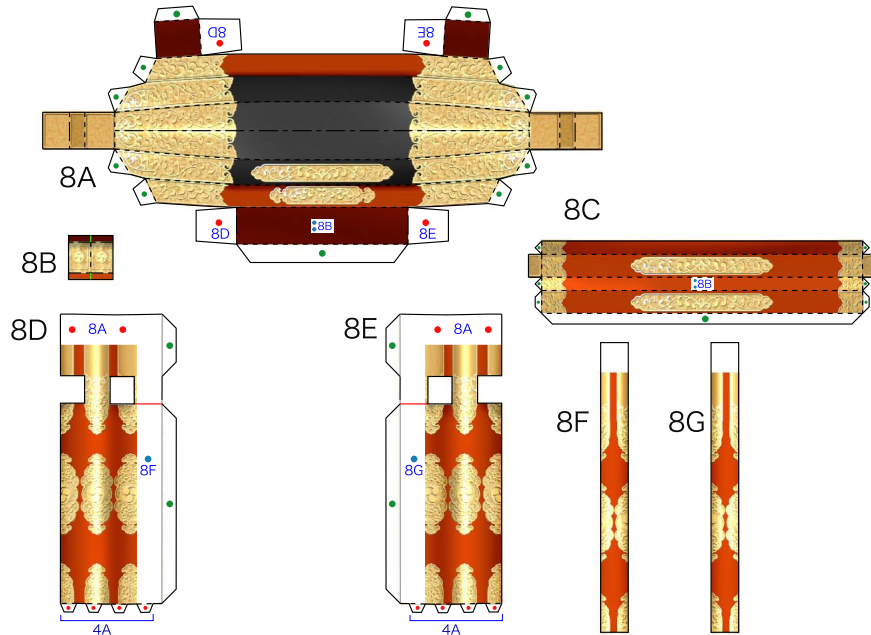
5A

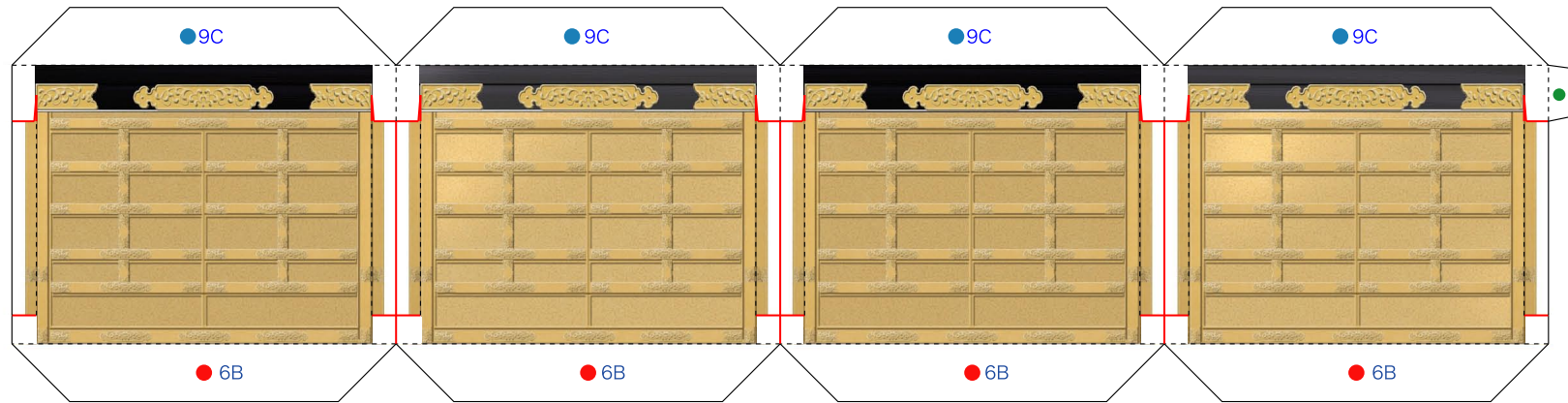




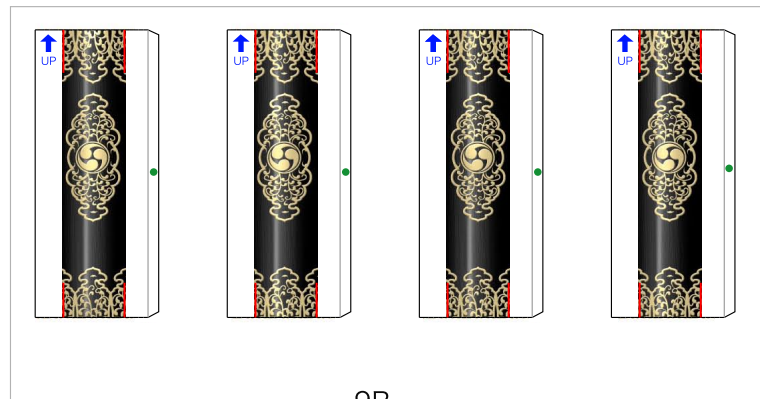
6C



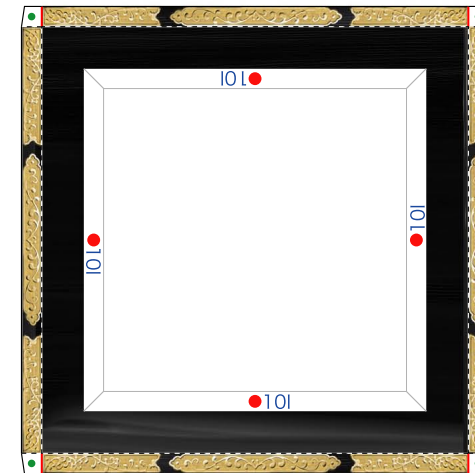




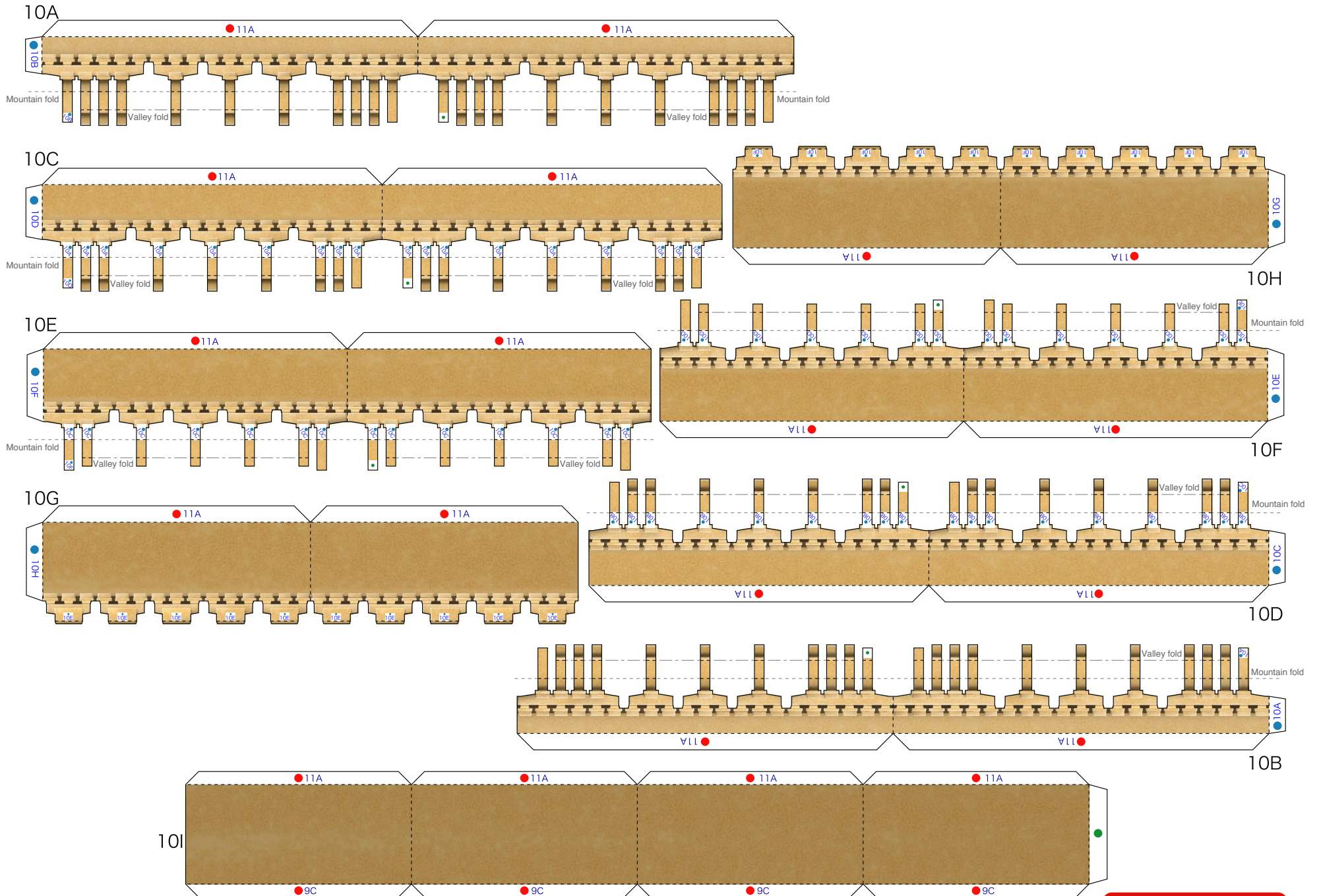
9A

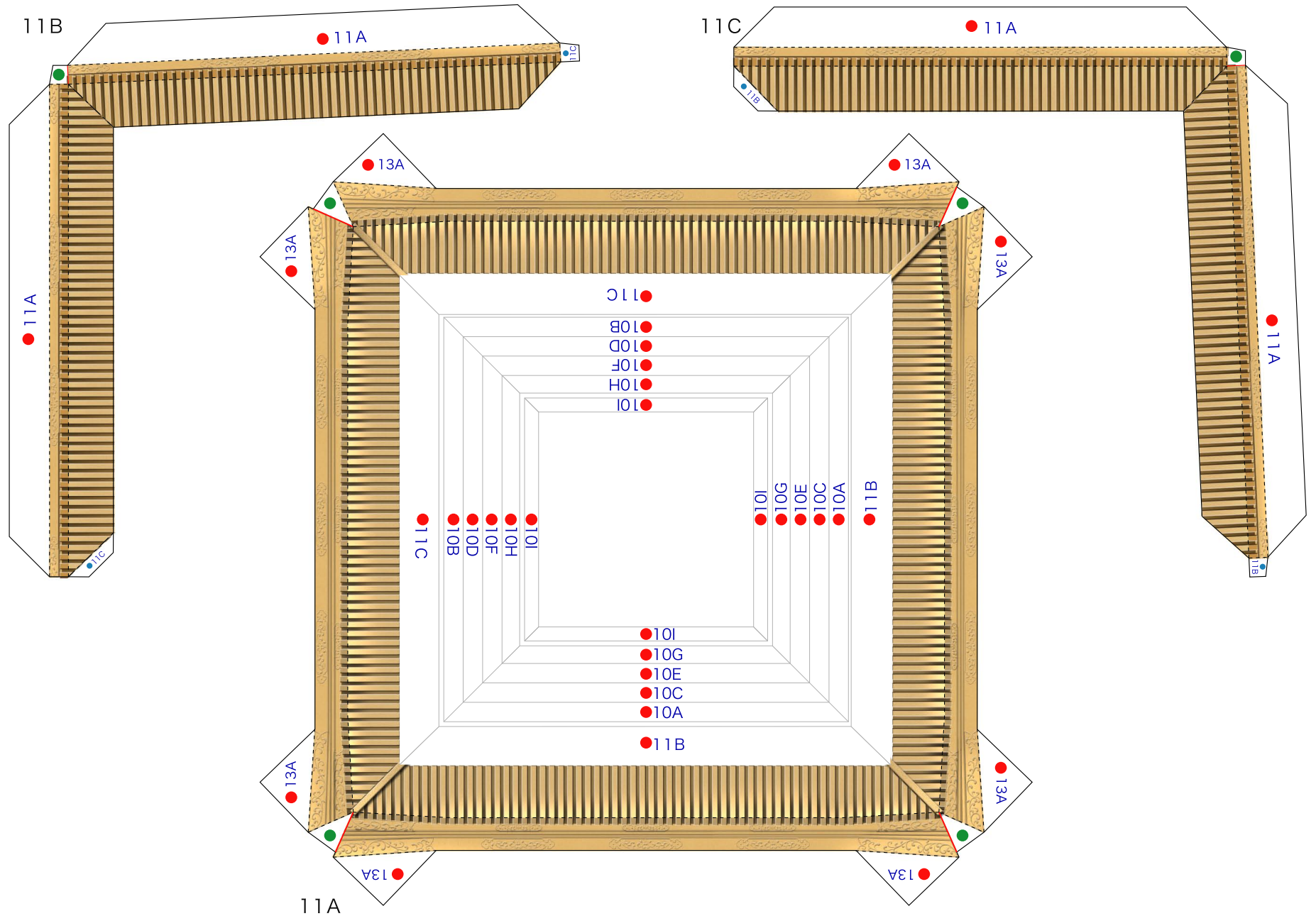


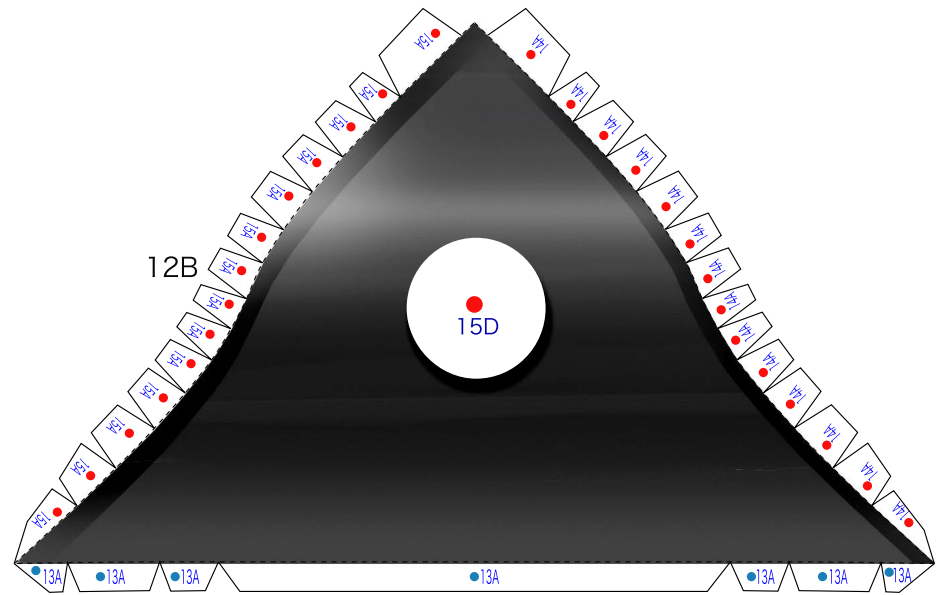
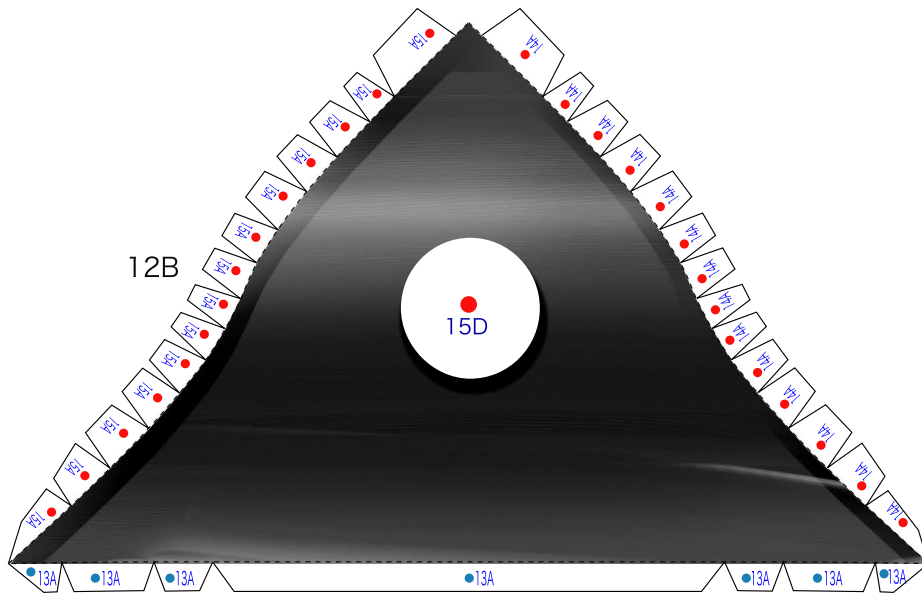
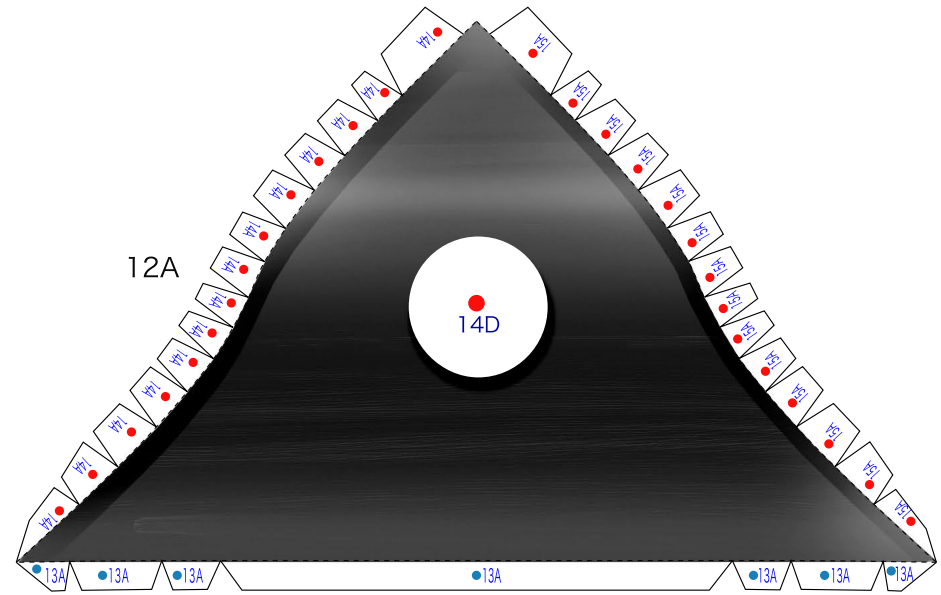
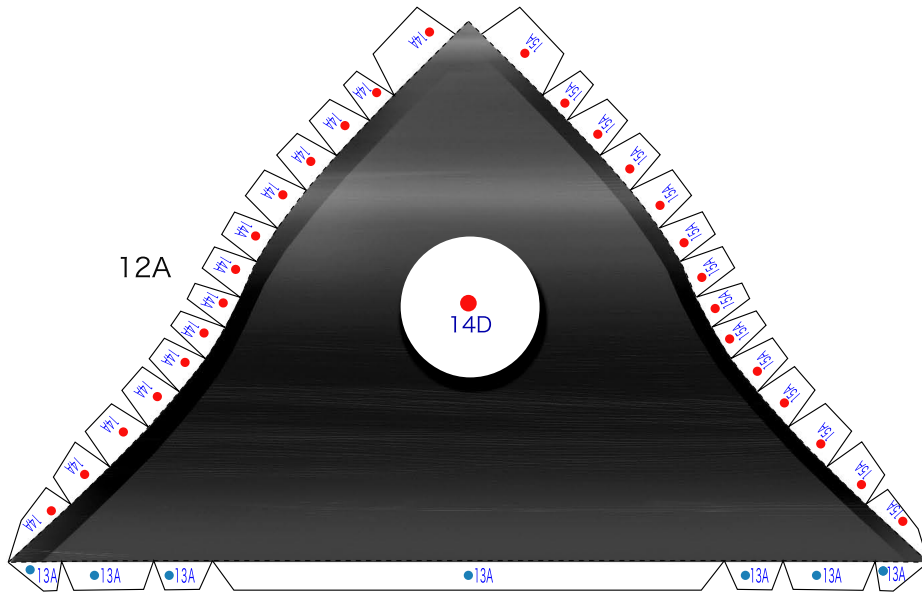
9B



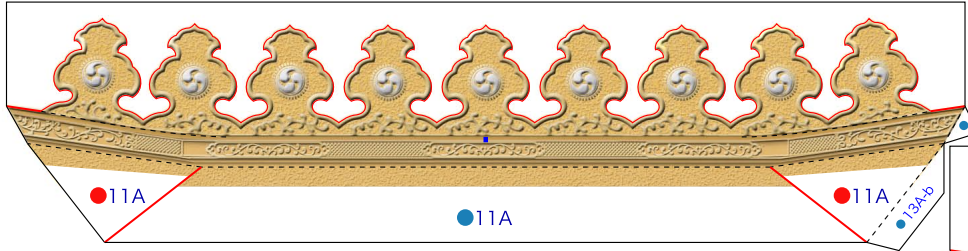
9C



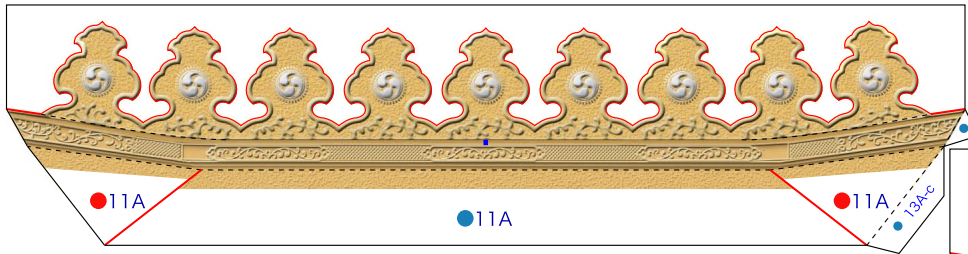




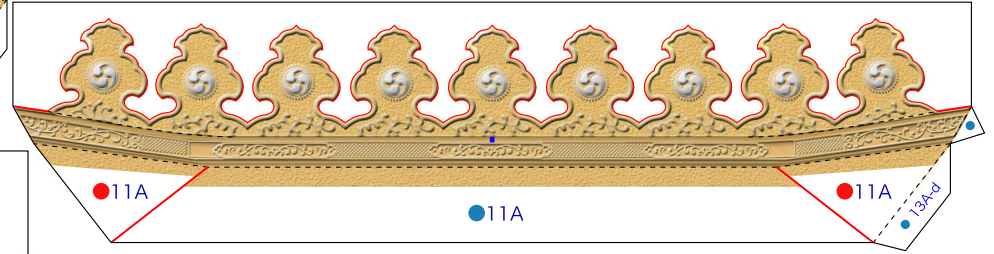
13A-a



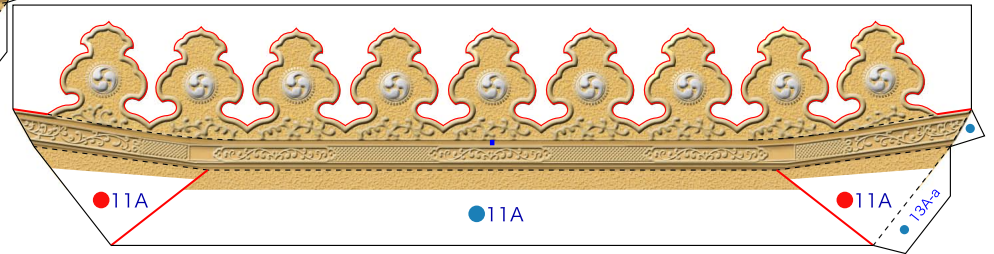
13A-b



13A-c

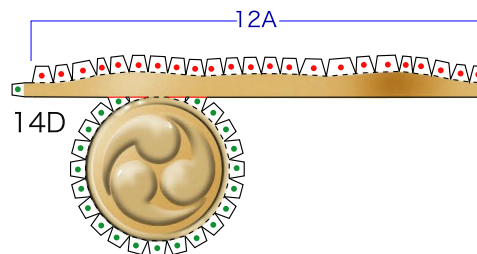
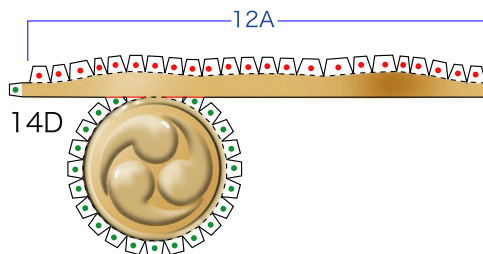
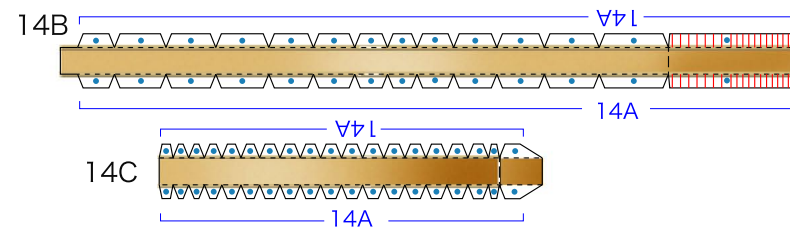
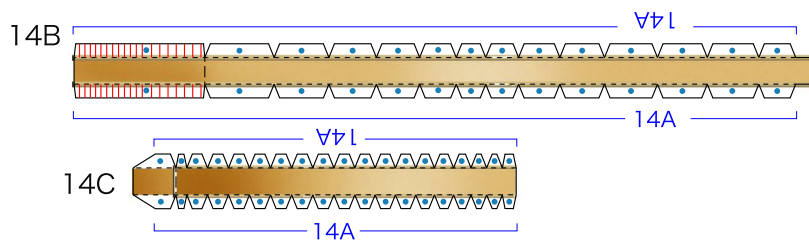
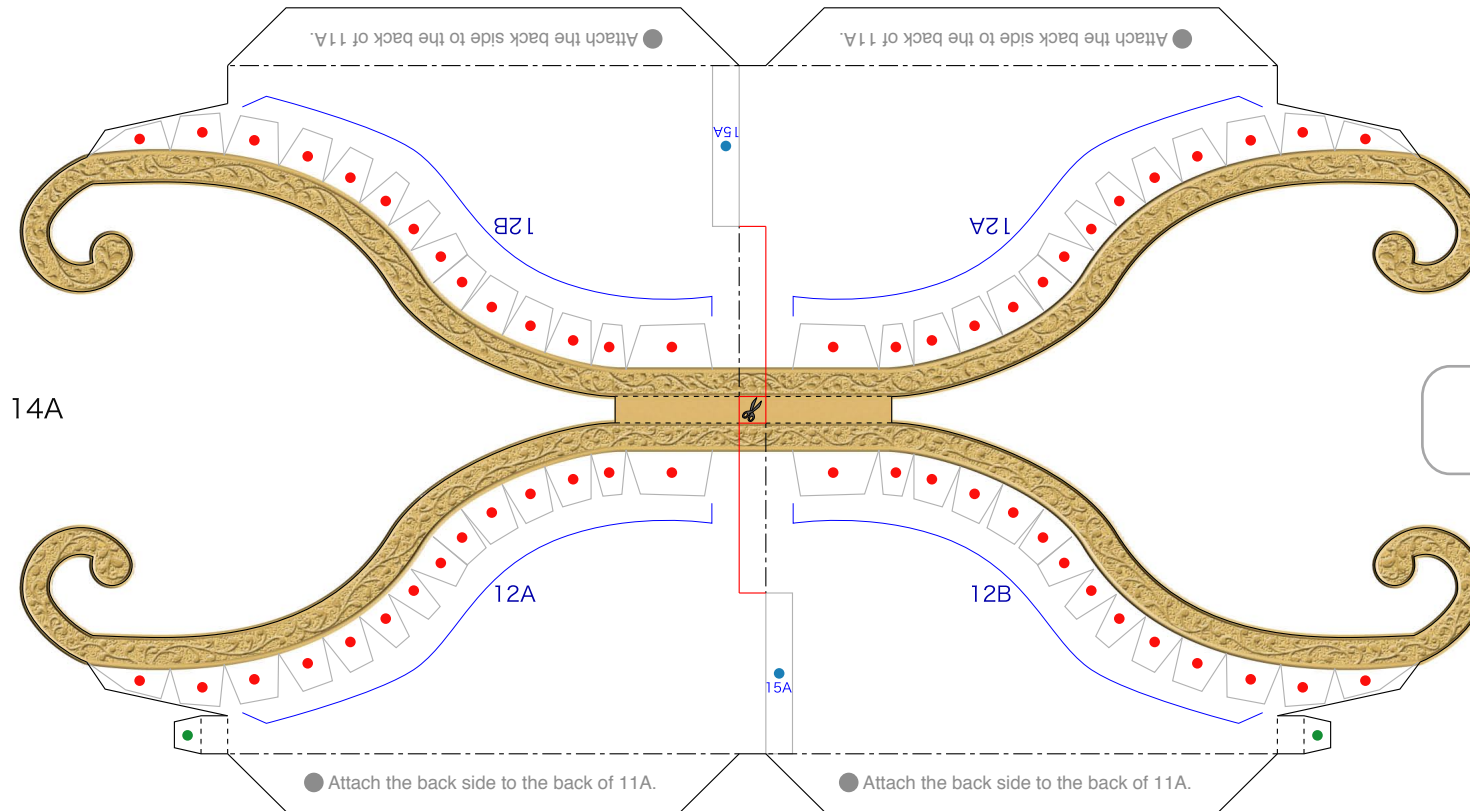


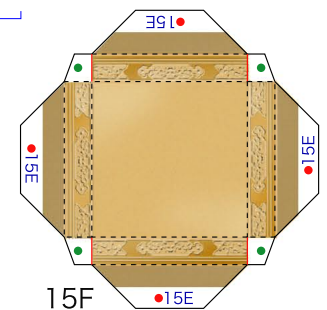
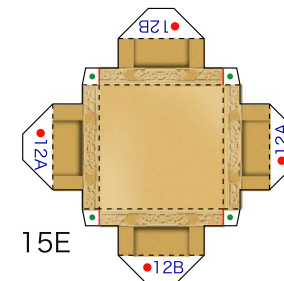
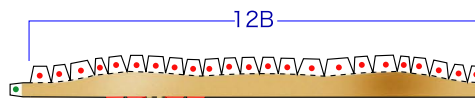
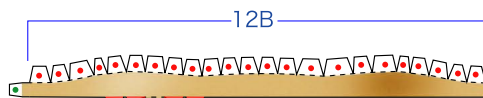
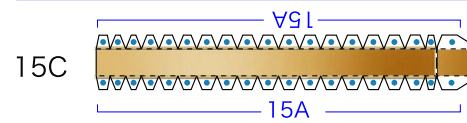
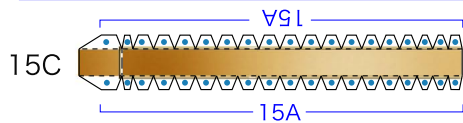
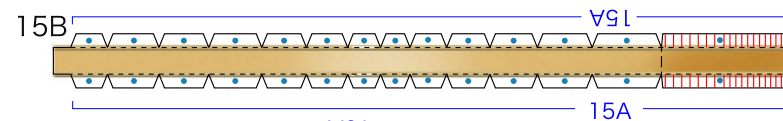
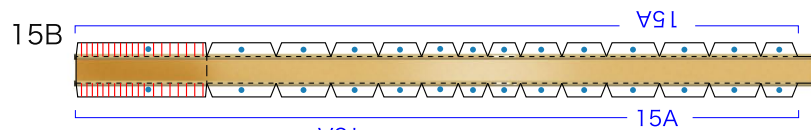
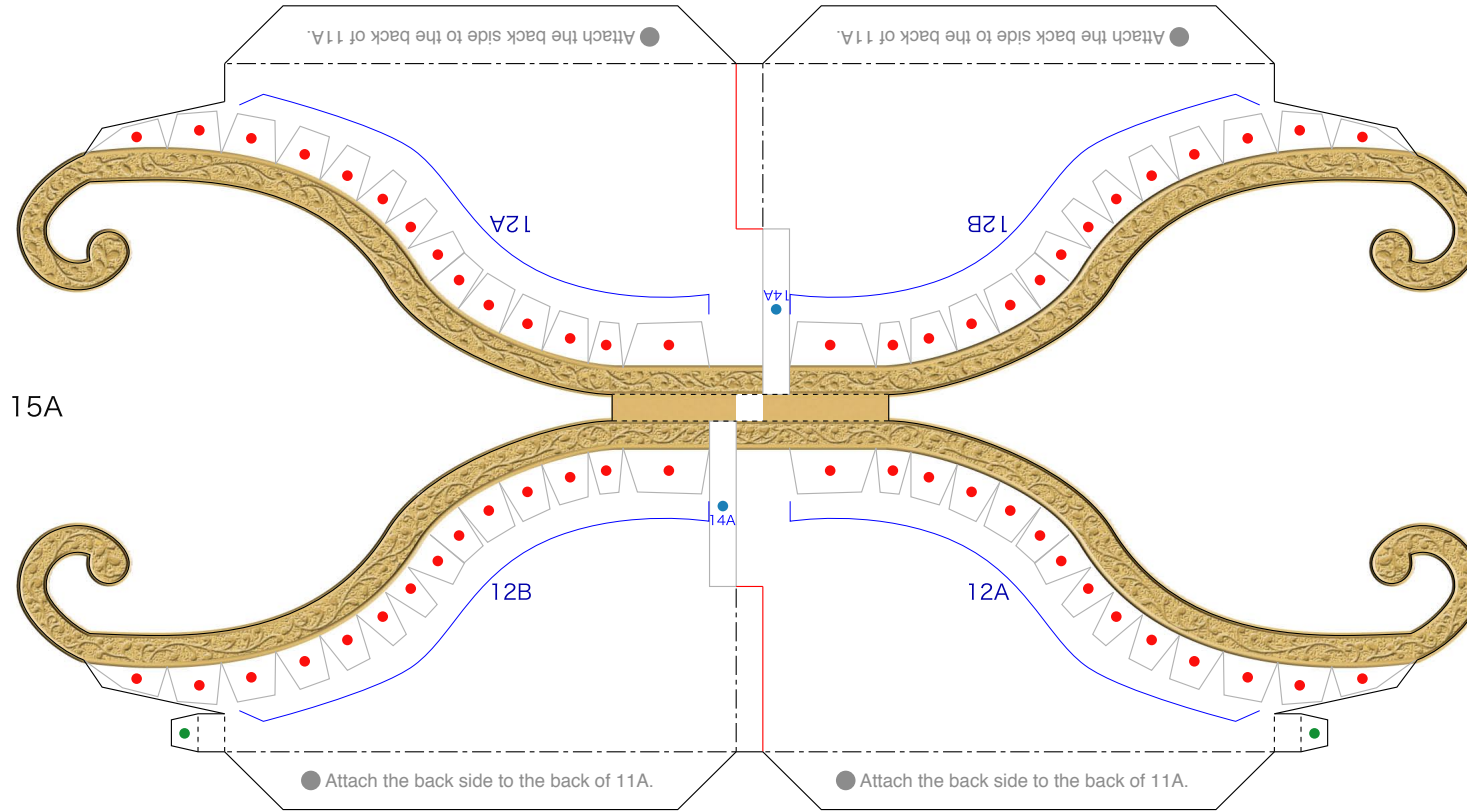
13A-d

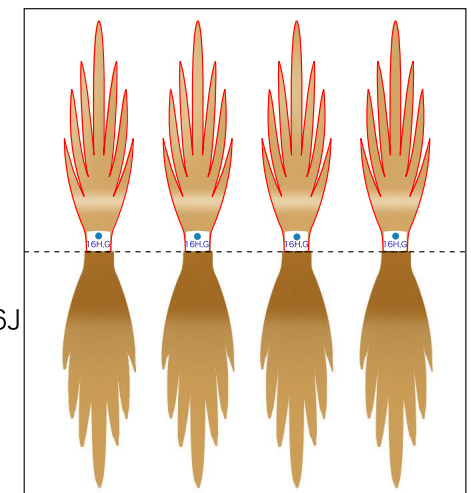
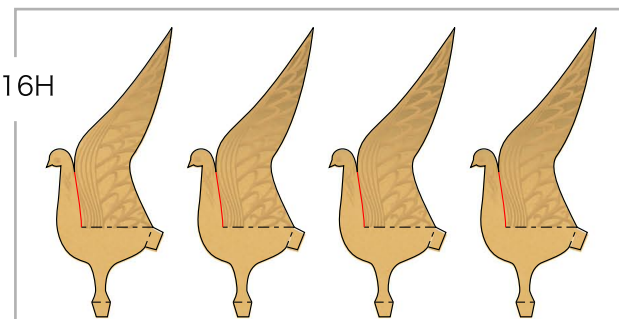
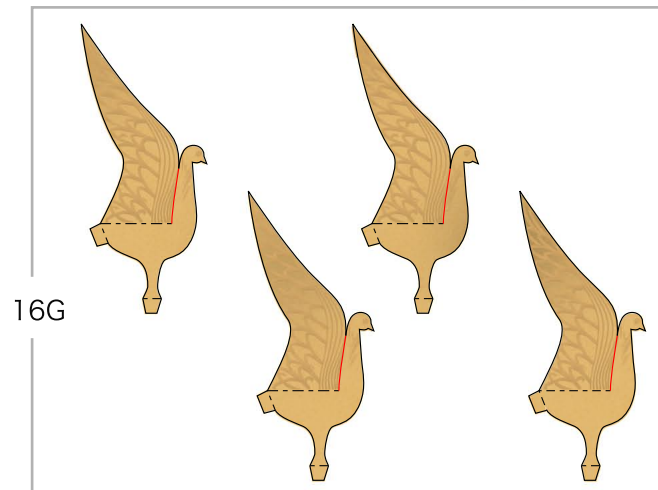
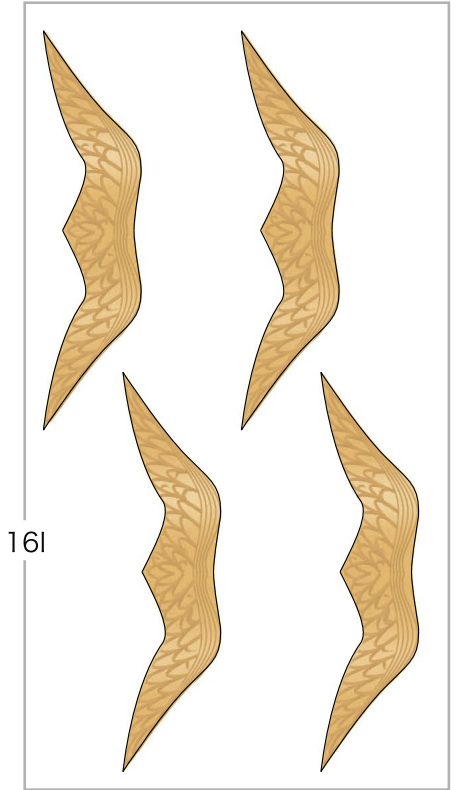
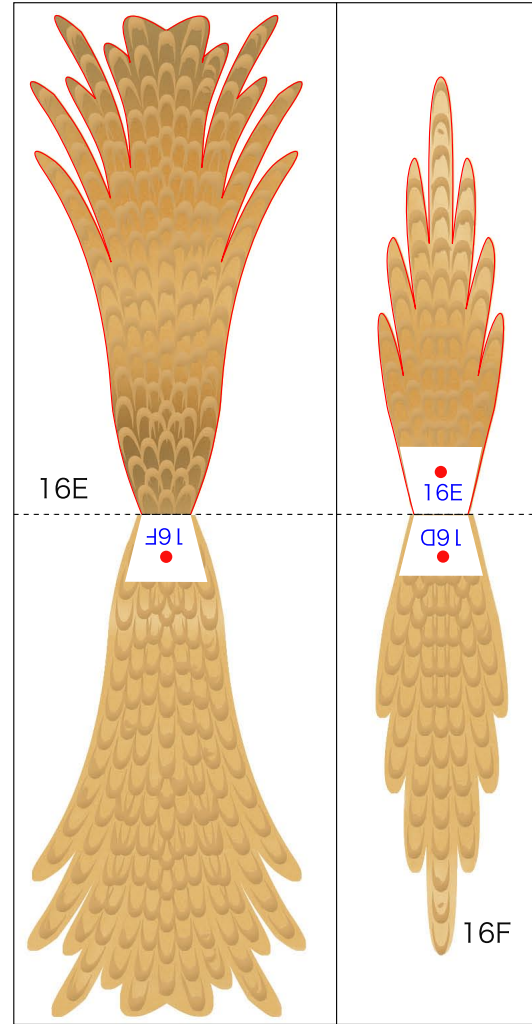
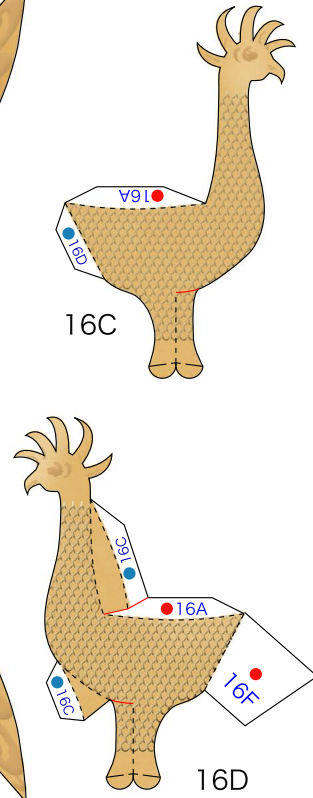
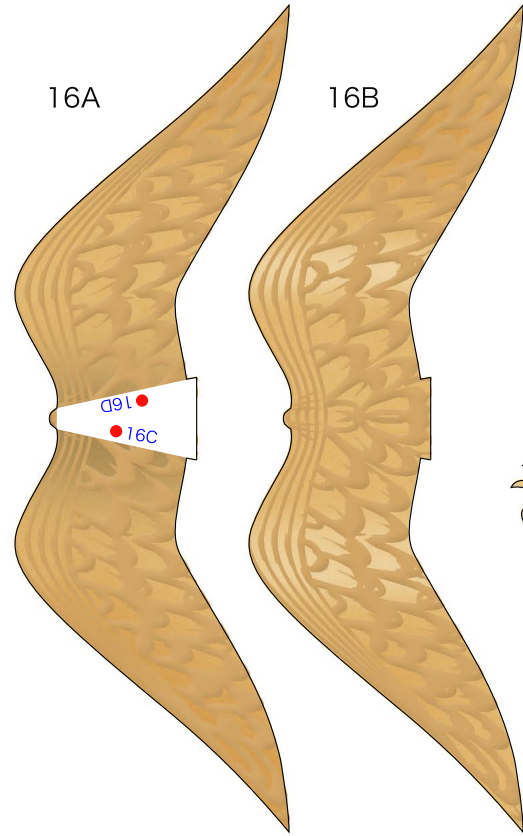


13B

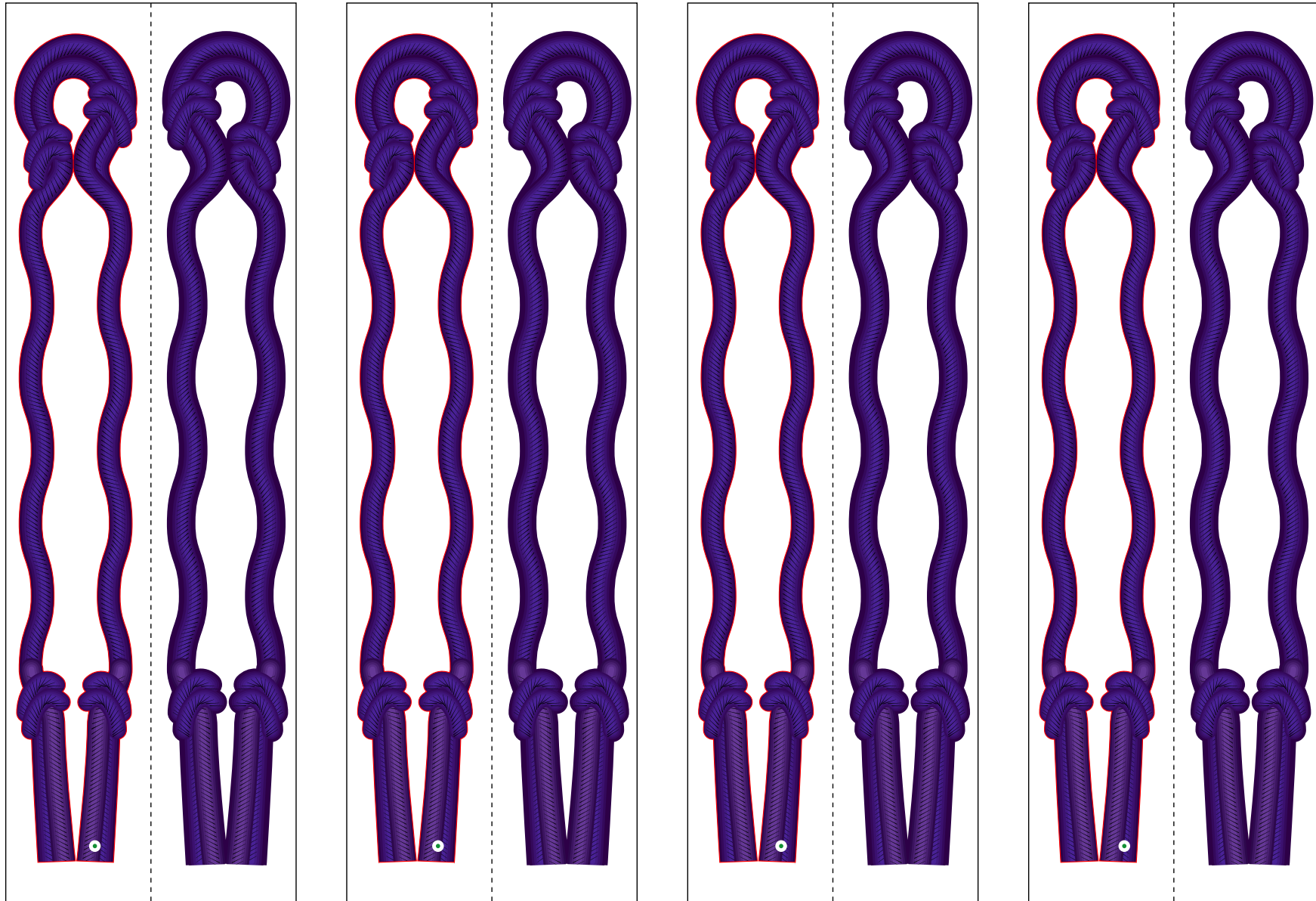




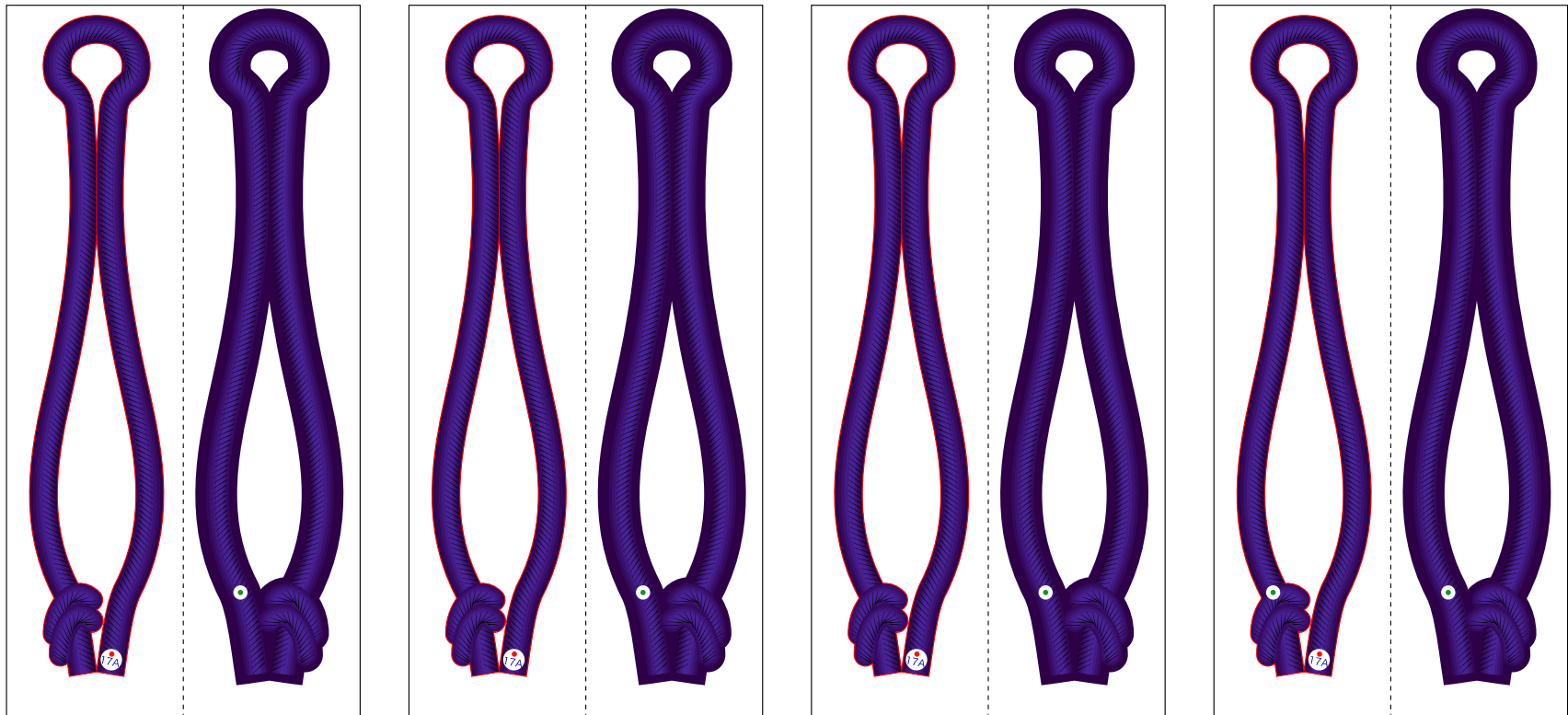




17A



18A



18B

