

PAPER CRAFT

<http://www.canon.com/c-park/en/>



Stuffed toy bears take the name 'Teddy Bear' from the 26th President of the United States of America, Theodore Roosevelt.

The Amerigo Teddy Bear comes dressed in a sailor's outfit. He is a sailor with a particular fondness for the sea, a skillful sailor who's always dreaming of his next journey. What great voyages and what great seas lie ahead of Amerigo?

The fun doesn't stop with the assembly of this "Amerigo Teddy Bear"; the arms and legs are movable so you can enjoy posing your teddy in different ways. Why not experiment with your own original poses?



Tools
Scissors
Paste, or woodwork glue
Stencil pen, or bodkin
Ruler

Notation Key	
—	Scissors line
.....	Mountain fold
- - - - -	Valley fold
+	Glue spot
A1, B1	Parts No.

- ◆ The Pattern are divided into five blocks: A (head), B (body), C (legs), D (arms), and E (Items). Follow the instructions for each block to assemble your teddy bear.

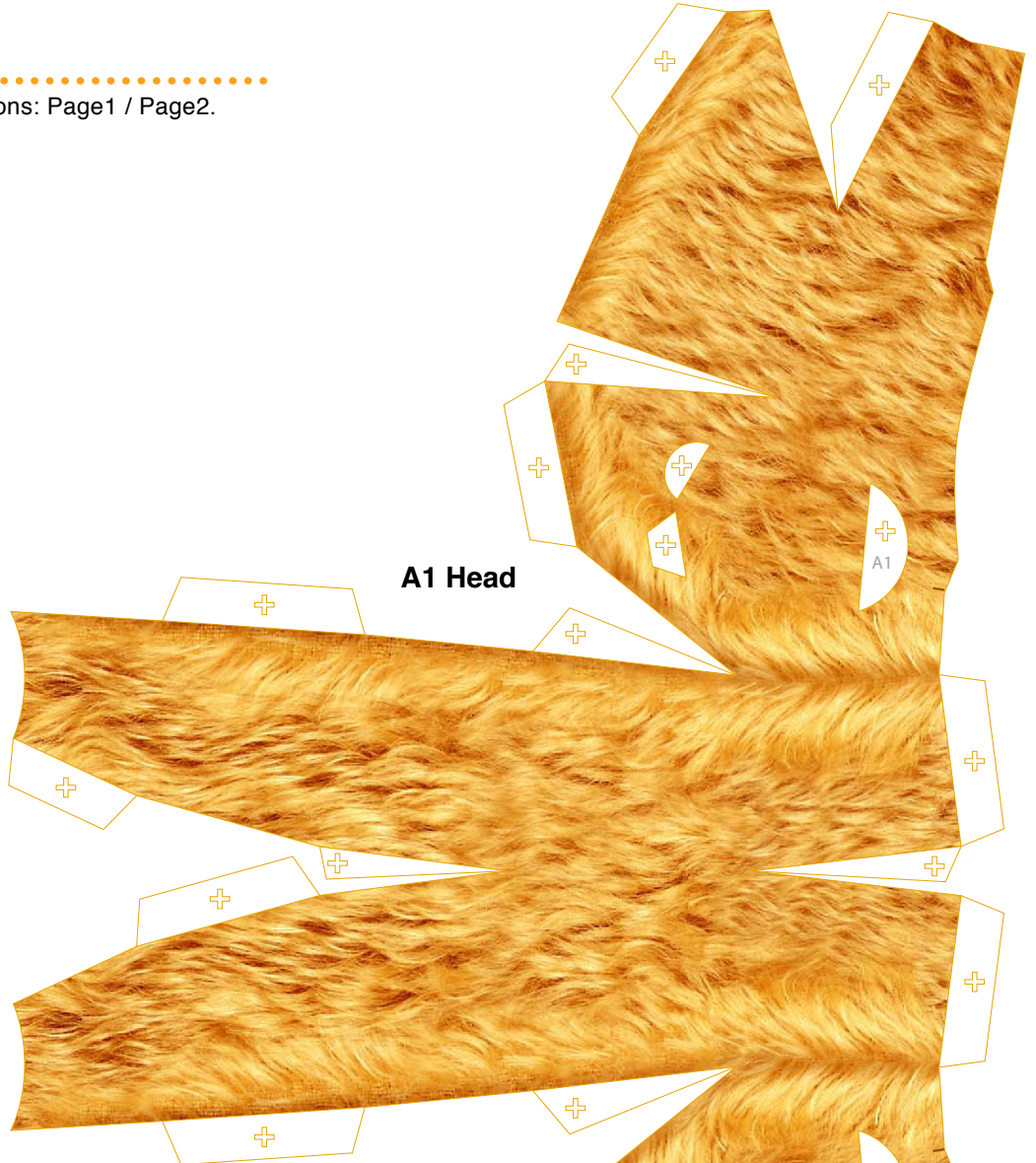
<Caution>

- ✘ Keep scissors and glue away from small children.
- ✘ Be careful not to cut your fingers when using scissors.

A

Head parts

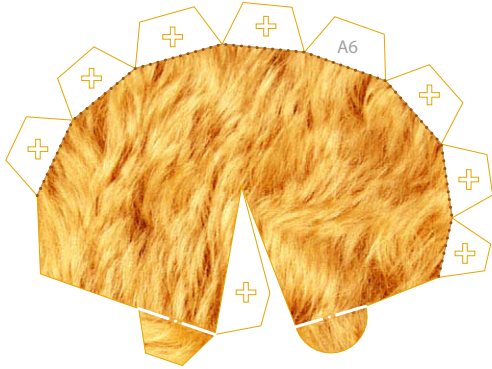
Refer to Assembly Instructions: Page1 / Page2.



A

Head parts

Refer to Assembly Instructions: Page2.



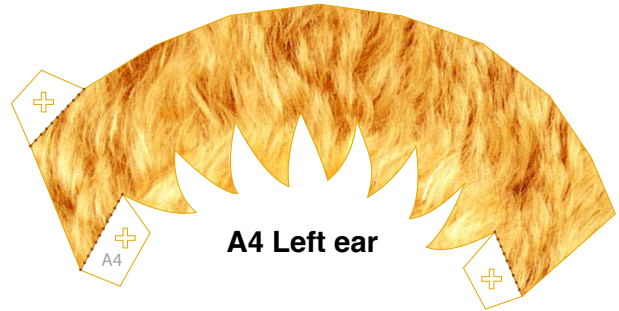
A6 Right ear



A3 Left ear



A7 Right ear



A4 Left ear



A8 Right ear

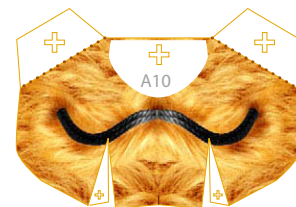


A5 Left ear

A9 Nose



A10 mouth



B

Body Parts

Refer to Assembly Instructions: Page2 / Page3.



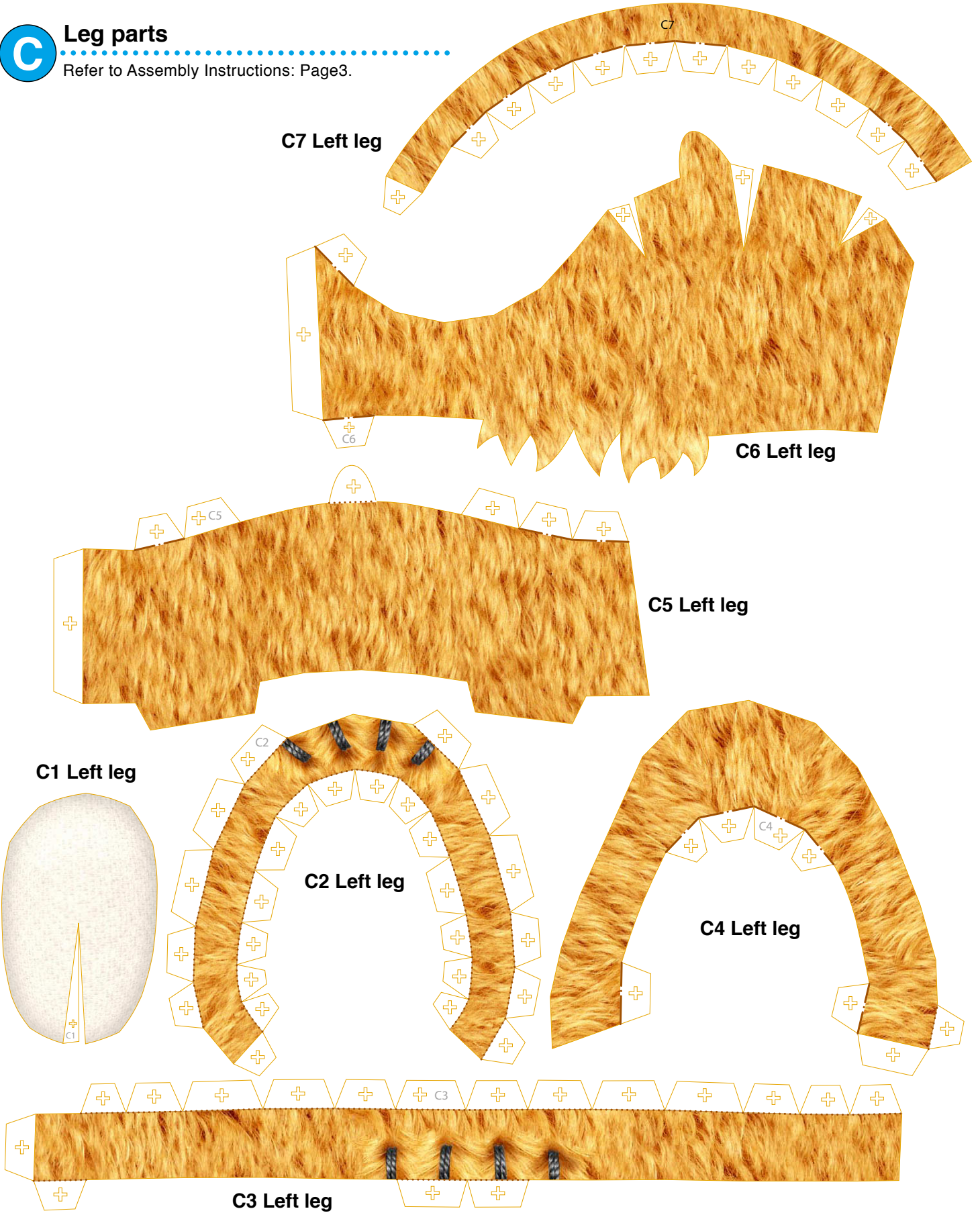
B Body Parts

Refer to Assembly Instructions: Page2 / Page3.



C Leg parts

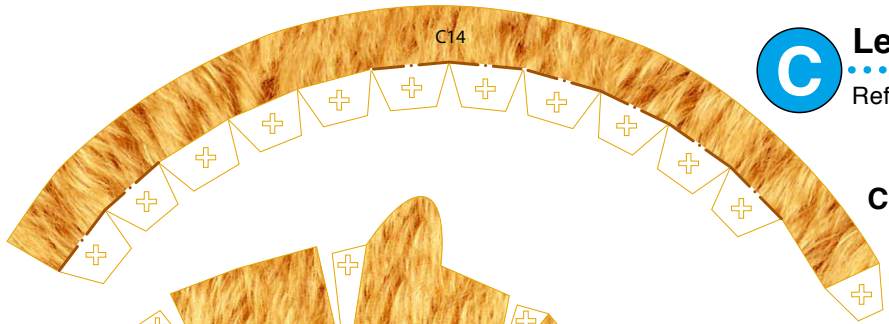
Refer to Assembly Instructions: Page3.





Leg parts

Refer to Assembly Instructions: Page3.



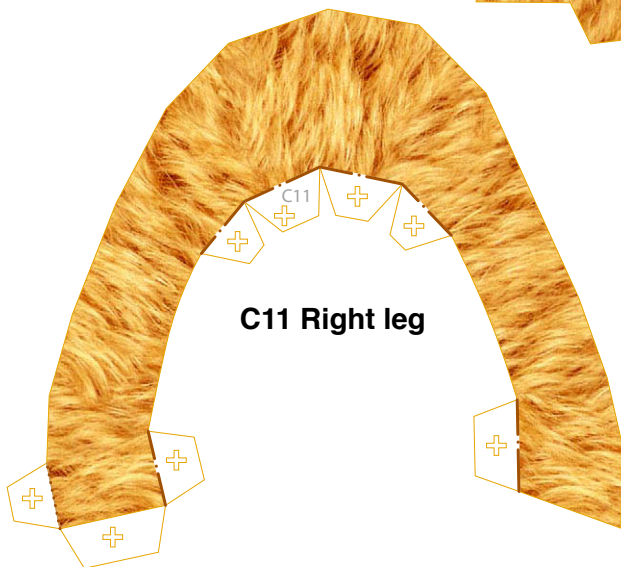
C14 Right leg



C13 Right leg



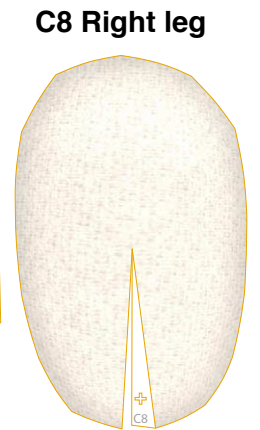
C12 Right leg



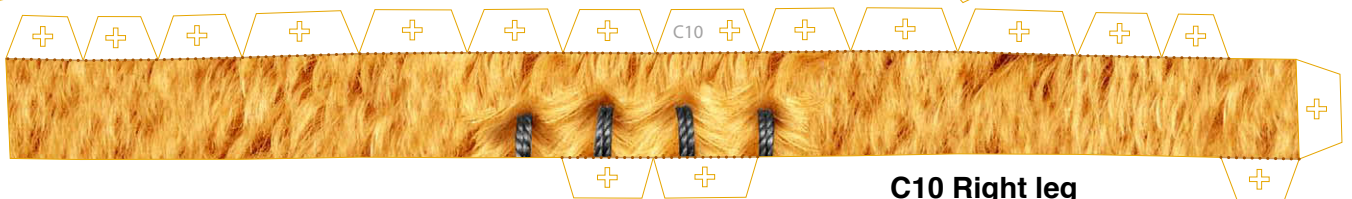
C11 Right leg



C9 Right leg



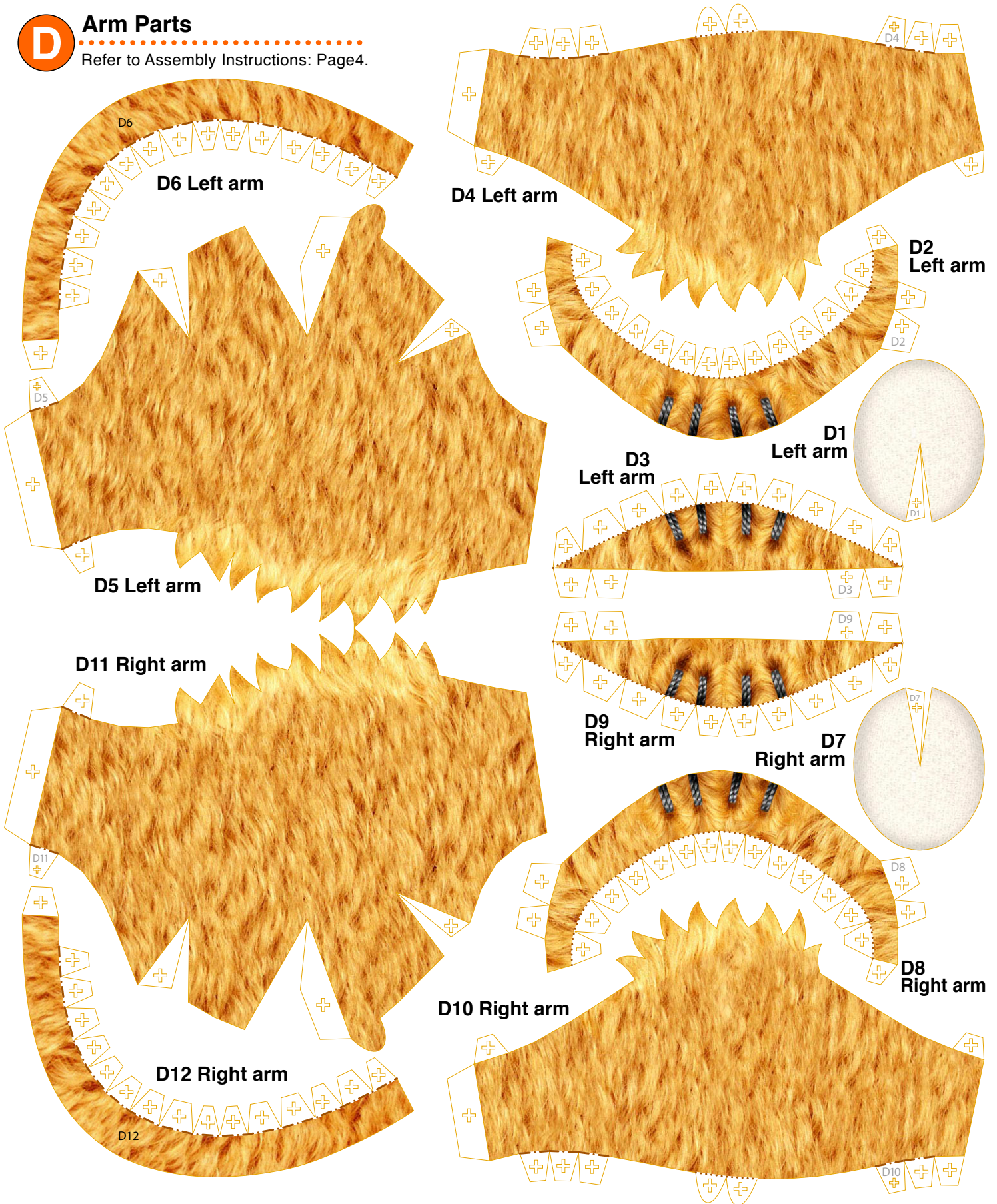
C8 Right leg



C10 Right leg

D Arm Parts

Refer to Assembly Instructions: Page4.



E Item Parts

Refer to Assembly Instructions: Page5.

