

# CREATIVE PARK

<http://www.canon.com/c-park/>

## Saint Bernard



- Height: Approx 65 to 90cm (approx 26 to 35 inch)
- Weight: Approx 50 to 95kg (approx 110 to 209 lbs)
- Origin: Switzerland
- Personality: A clever dog with a warm-hearted, gentle nature

The Saint Bernard is one of the largest of all the dog breeds in the world. Saint Bernard dogs are gentle and slow-paced, while at the same time being very clever animals. This disposition makes them popular pets. They are also famous as rescue dogs in the remote mountainous areas of the Swiss Alps, which experience heavy snowfall. Saint Bernards are said to have saved thousands of lives in this area, and they are often depicted with barrels around the neck, said to contain rum for the lost victims they found.

With this paper craft, you can make a model about one quarter the size of a real Saint Bernard dog.



### Tools

Scissors  
 Paste, or woodwork glue  
 Stencil pen, or bodkin  
 Ruler

### Notation Key

——— Scissors line  
 ..... Mountain fold  
 - - - - Valley fold  
 + Glue spot  
 ⊙ Put glue on the back  
 A1, B1 Parts No.

◆ The Assembly instructions are divided into three blocks: A (head), B (body, legs), and C (waist, legs). Follow the instructions for each block to assemble your saint bernard.

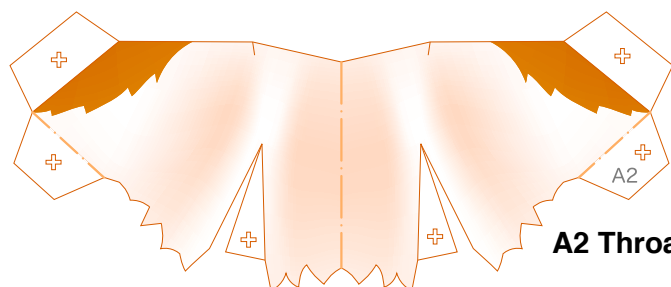
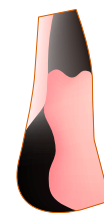
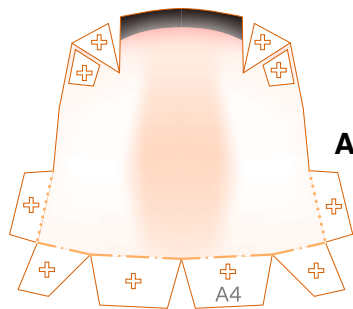
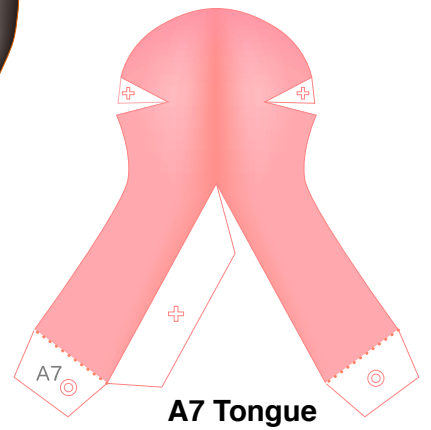
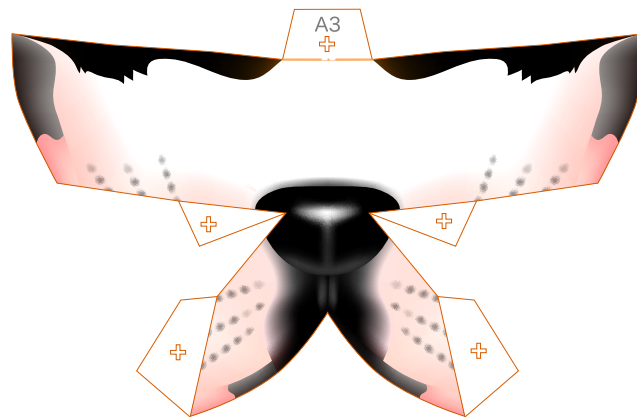
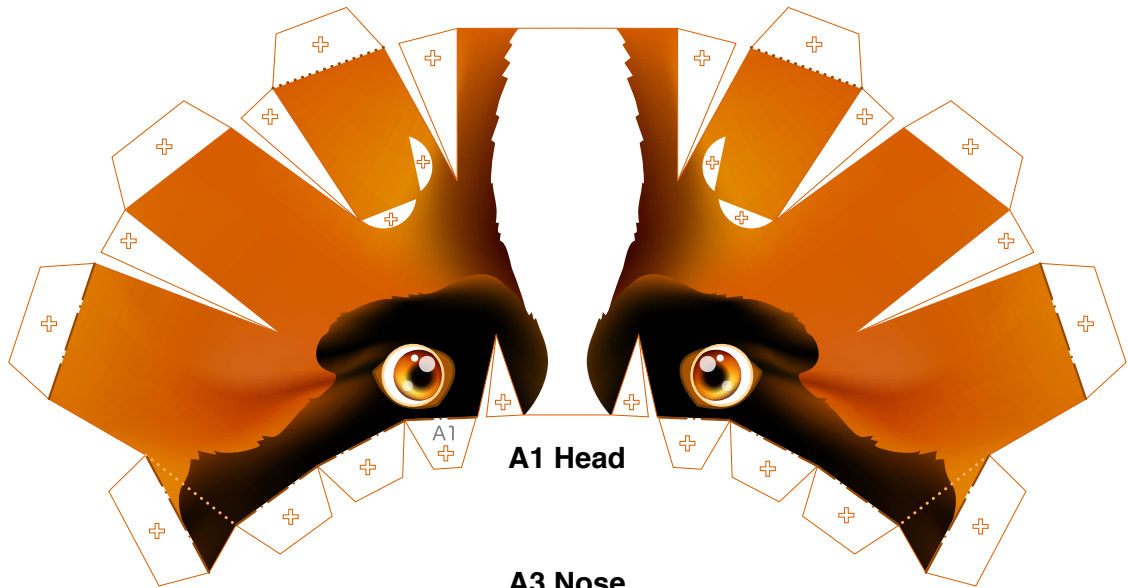
◆ ★ marks a basic assembly technique that remains the same regardless of the part.  
 Instructions are printed only for the first instance.

### <Caution>

- ※ Keep scissors and glue away from small children.
- ※ Be careful not to cut your fingers when using scissors.

**A** Head parts

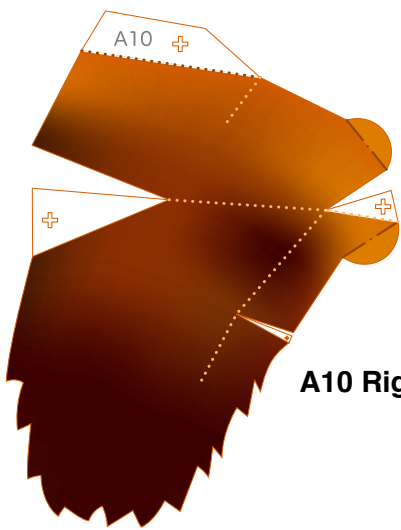
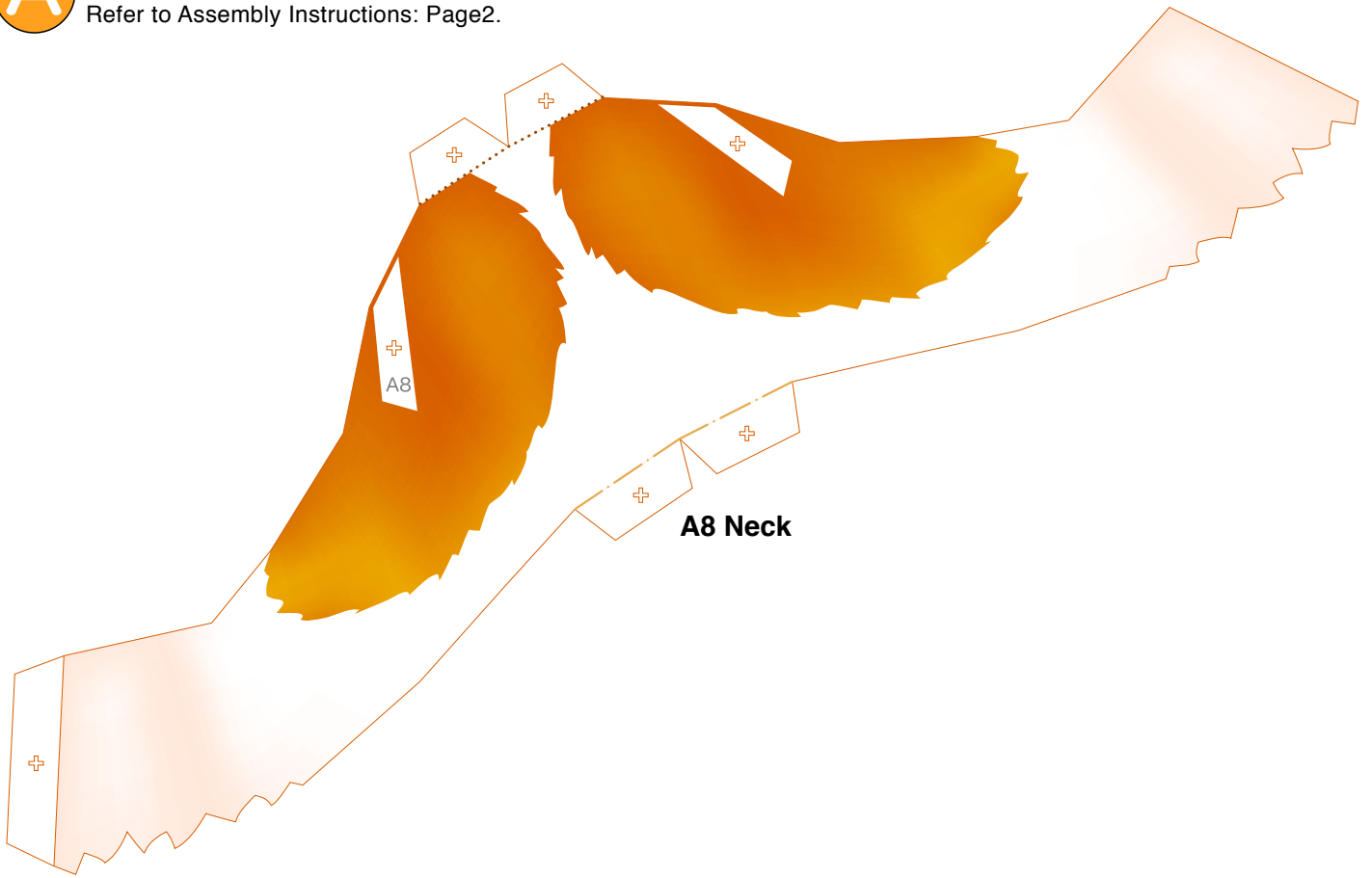
Refer to Assembly Instructions: Page1 / Page2.



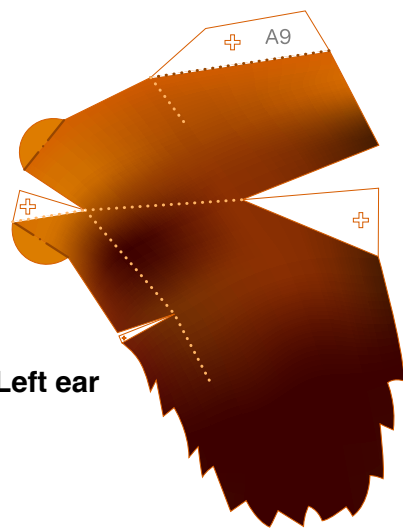


### Head parts

Refer to Assembly Instructions: Page2.



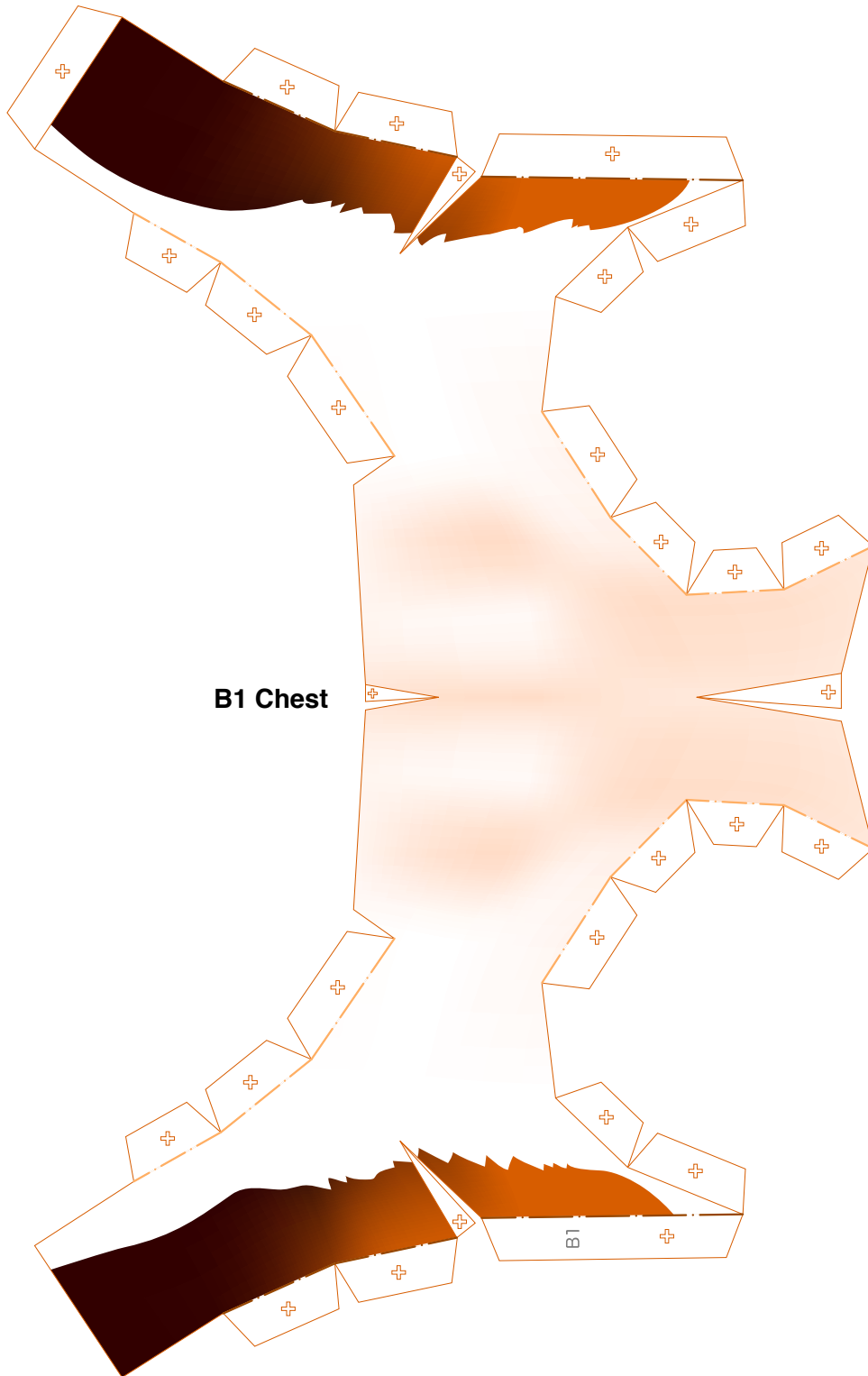
A10 Right ear



A9 Left ear

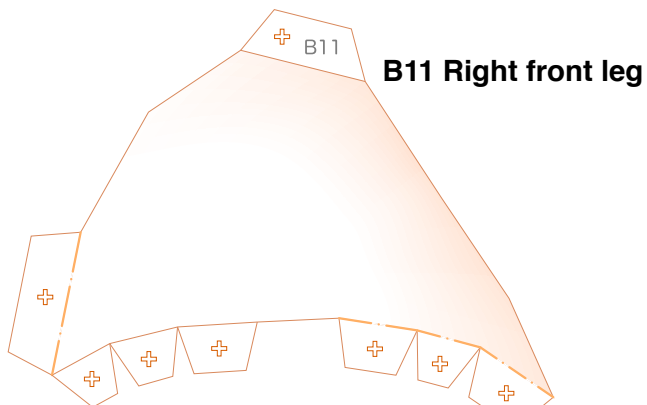
**B** Body parts

Refer to Assembly Instructions: Page2 / Page3.

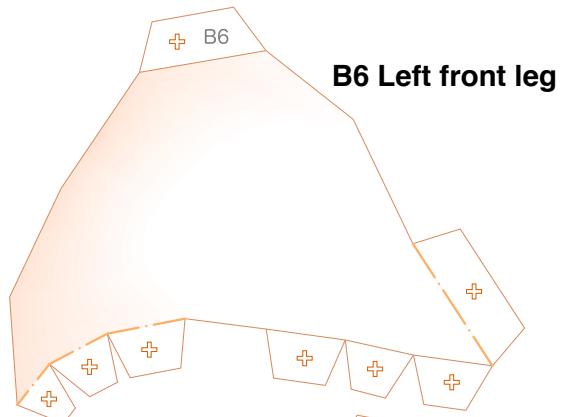


**B** Leg parts

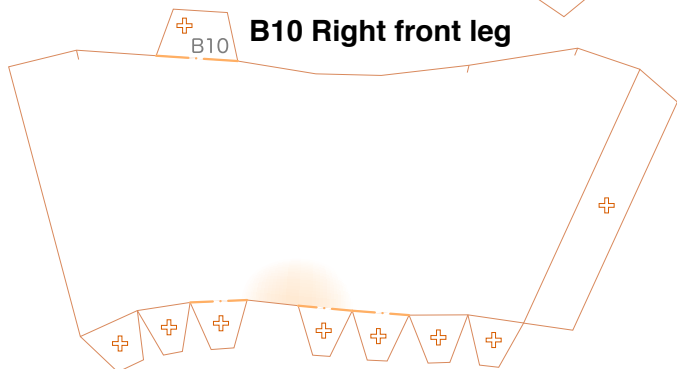
Refer to Assembly Instructions: Page3.



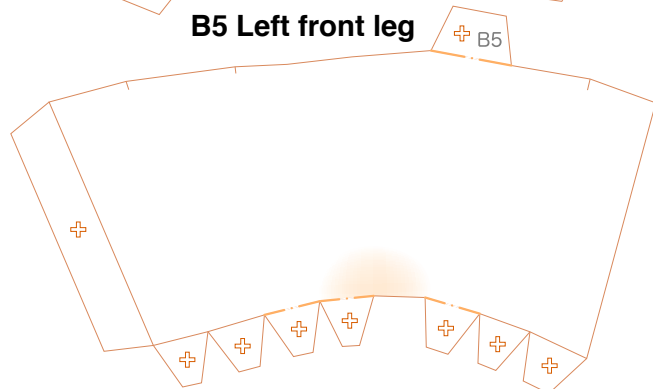
**B11 Right front leg**



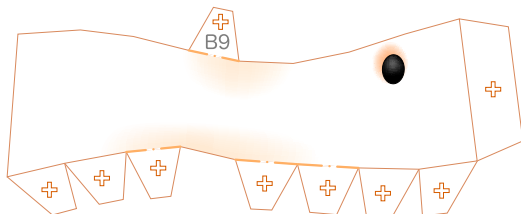
**B6 Left front leg**



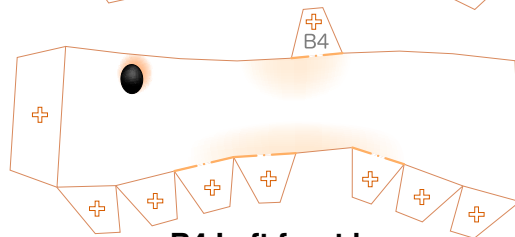
**B10 Right front leg**



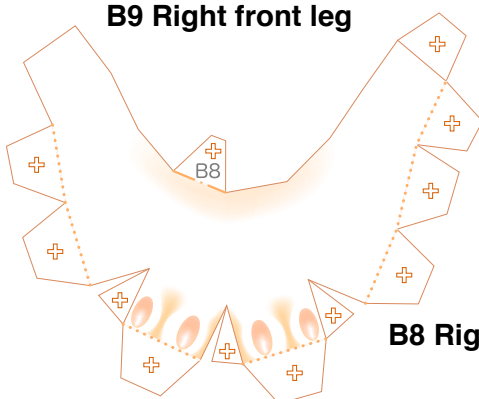
**B5 Left front leg**



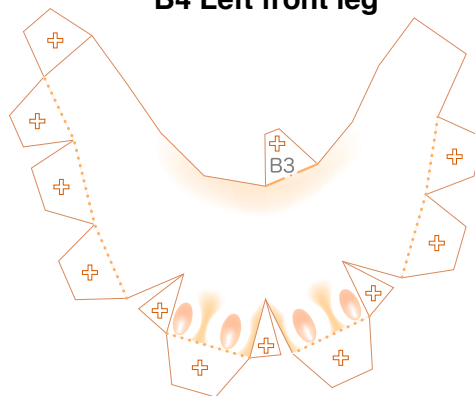
**B9 Right front leg**



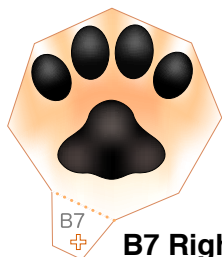
**B4 Left front leg**



**B8 Right front leg**



**B3 Left front leg**



**B7 Right front leg**

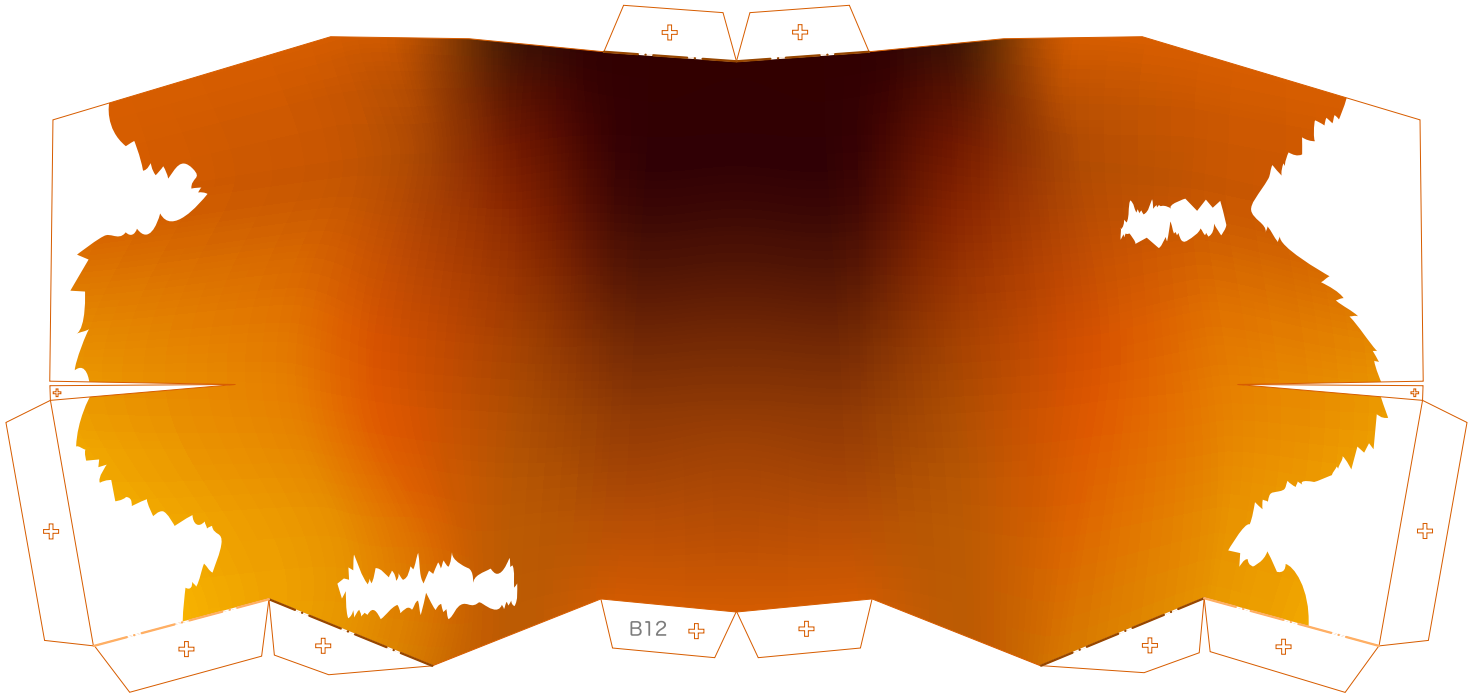


**B2 Left front leg**

# B Body parts

Refer to Assembly Instructions: Page3.

### B12 Body



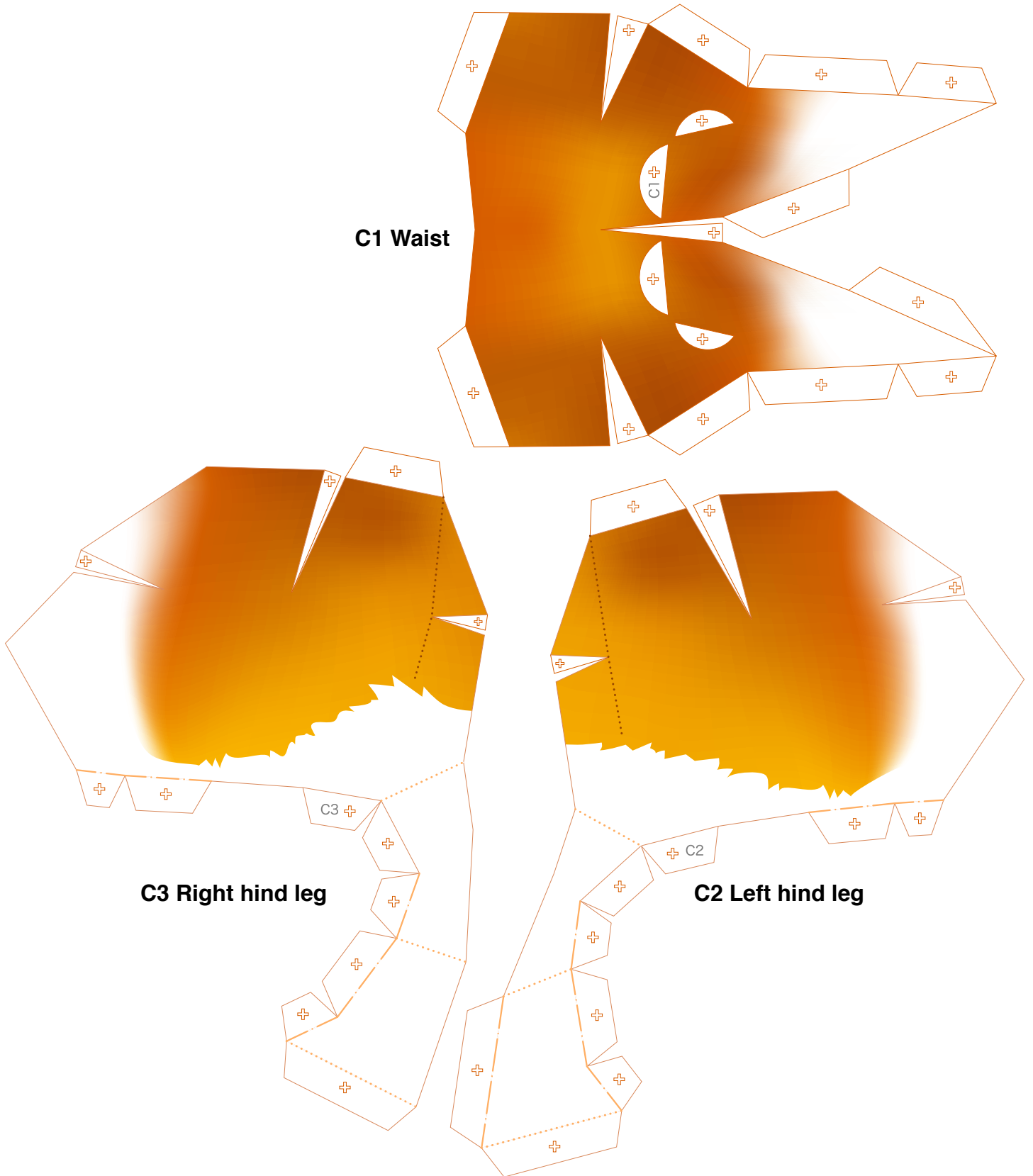
### B13 Belly





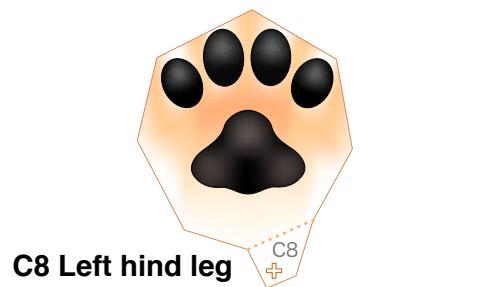
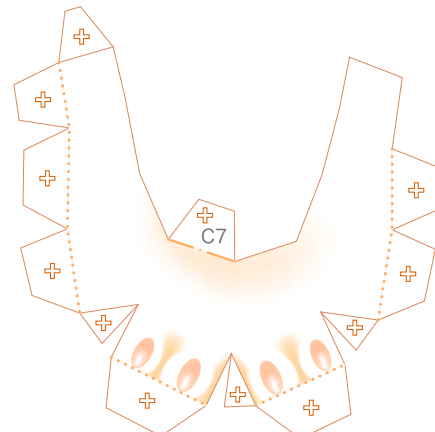
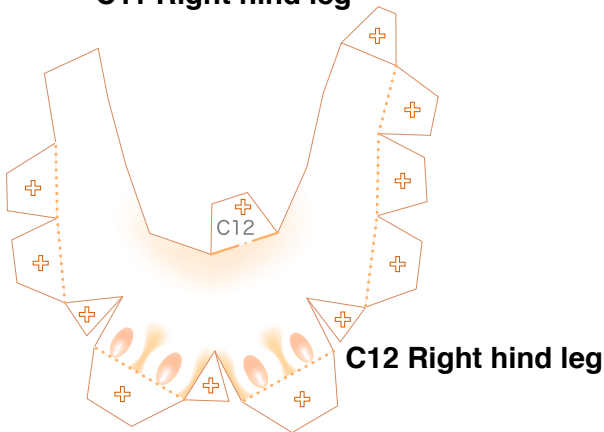
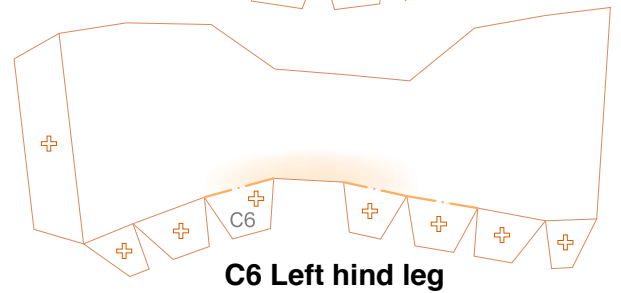
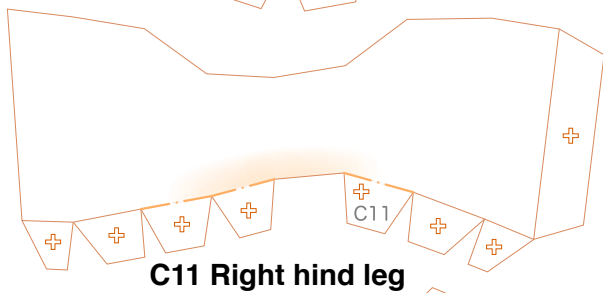
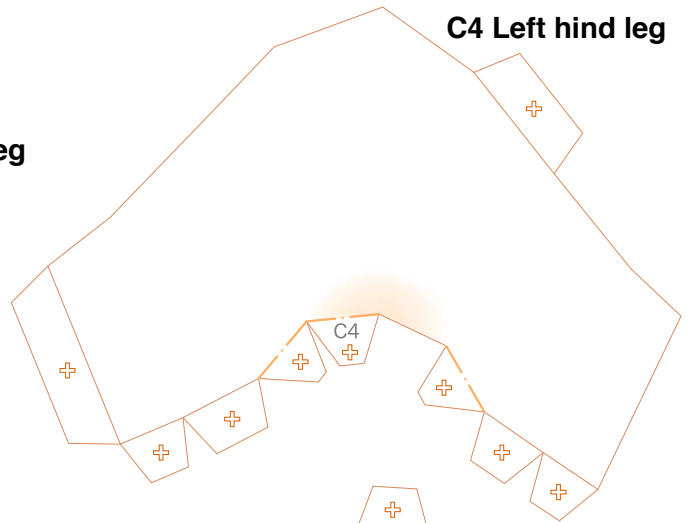
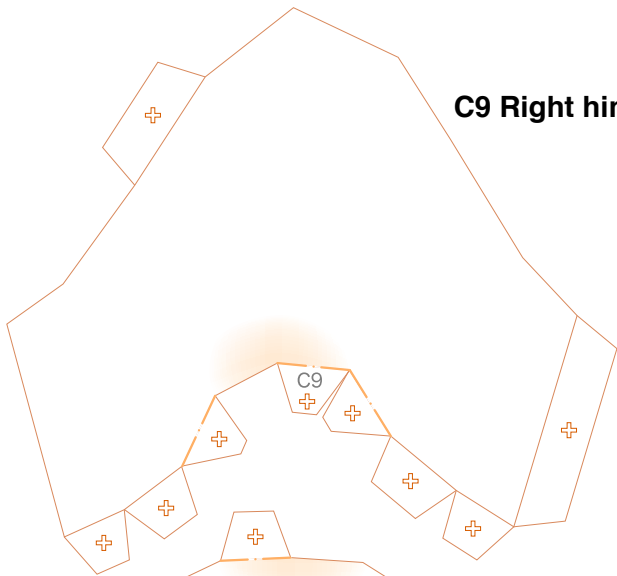
### Waist and leg parts

Refer to Assembly Instructions: Page3 / Page4.



**C Leg parts**

Refer to Assembly Instructions: Page4.







### Tail and barrel parts

Refer to Assembly Instructions: Page4.

