



An accordion is a musical instrument which is played by compressing or expanding a bellows in a horizontal direction. When the central bellows are compressed and expanded, air flows to the instrument's reeds. Music can be made by simultaneously pressing the keys on the right hand side. Some accordions have buttons rather than keys. The right hand part is mainly responsible for creating the melody. The left hand side has buttons called bass buttons, which are used to create bass sounds or chords. This paper craft model is based on a piano accordion, with a keyboard on the right hand side. It is constructed so that the bellows can be slightly compressed and expanded. Move it and play with it, or just use it as an ornament!

\*This model was designed for Papercraft and may differ from the original in some respects.

\*Build the model by carefully reading the Assembly Instructions.

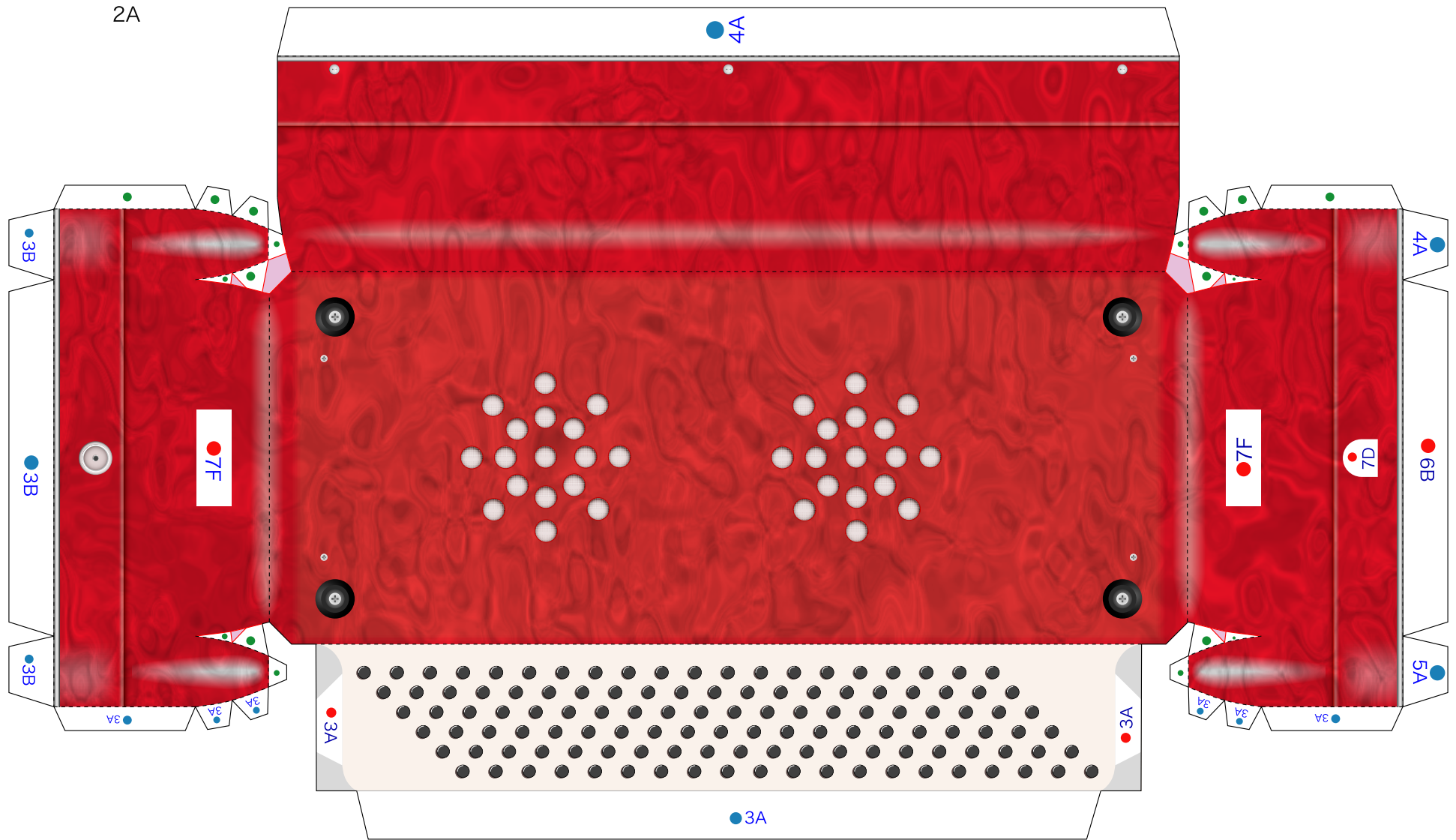
■ Parts sheet (Pattern) : Fourteen A4 sheets

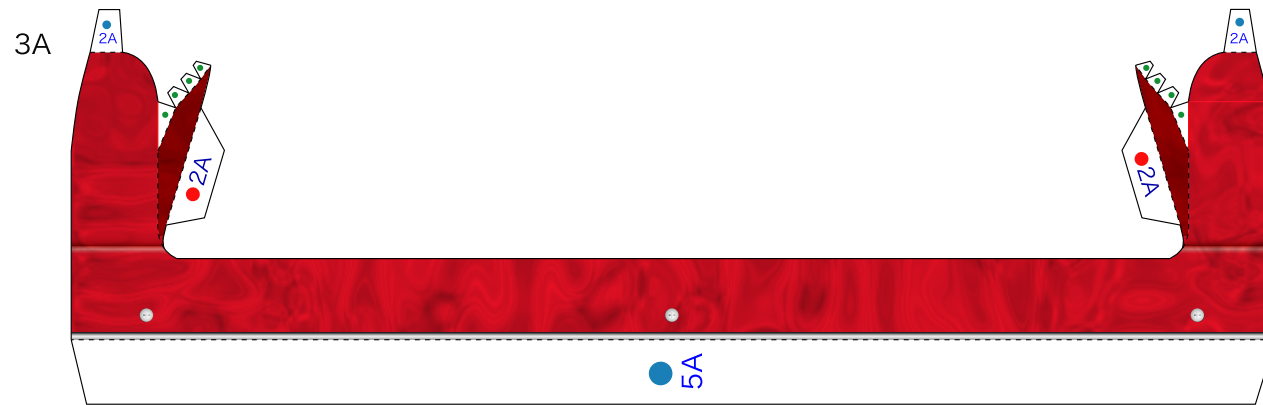
■ No. of Parts : 60 parts

**Handy Hint**

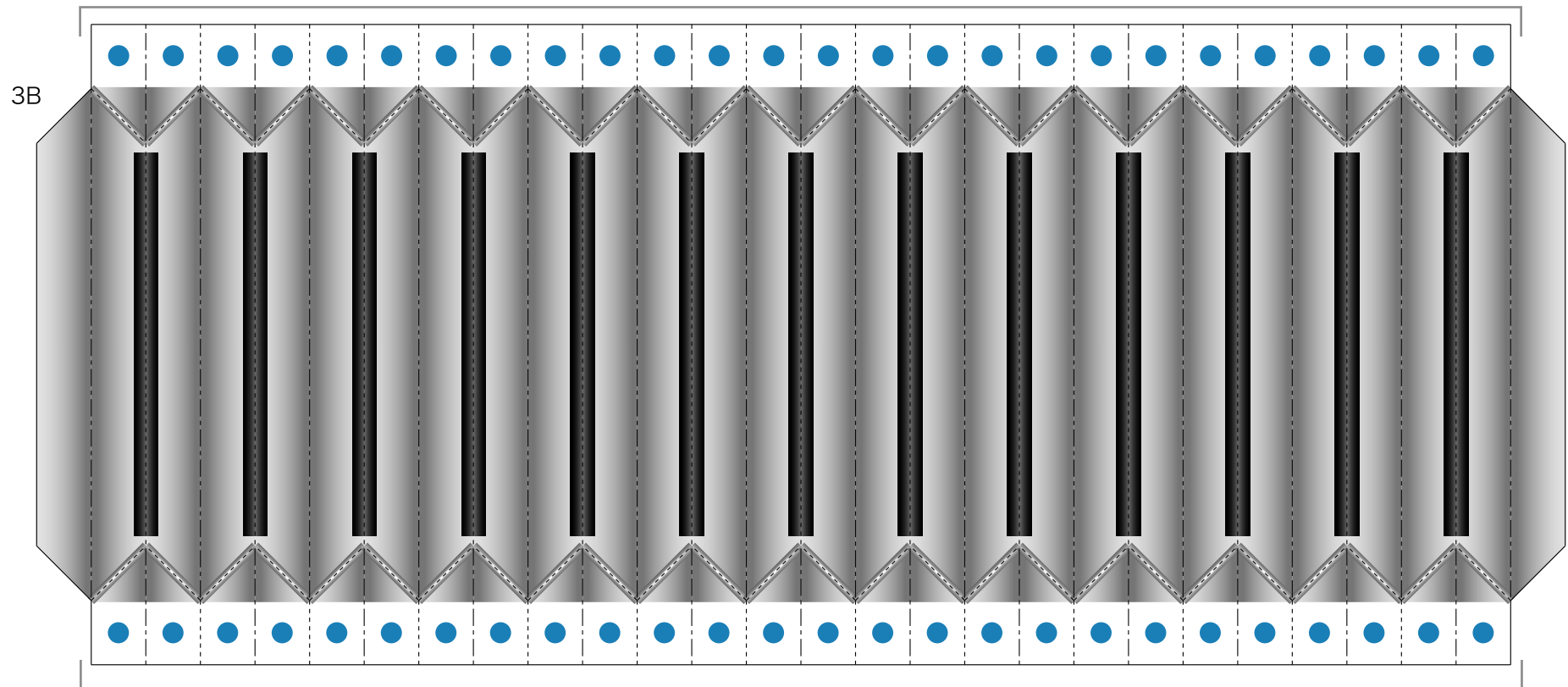
- ☆ Write down the number on the back of each part as you cut them out.
- ☆ Since many of the parts are complicated and very small, do a trial assembly before actually attaching them together.
- ☆ The finished piece will look more realistic if you paint the edges of the parts with colors similar to the parts.



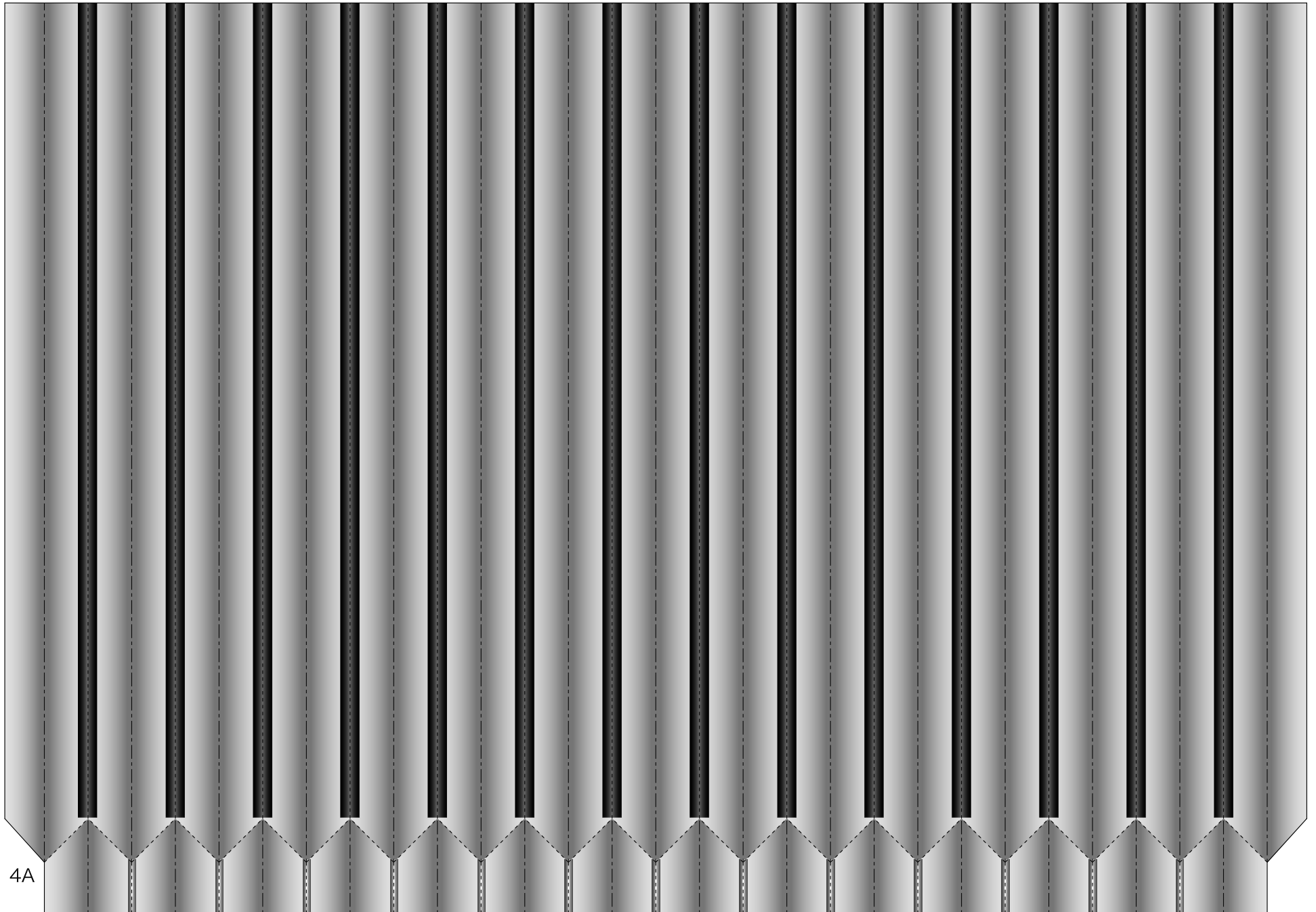




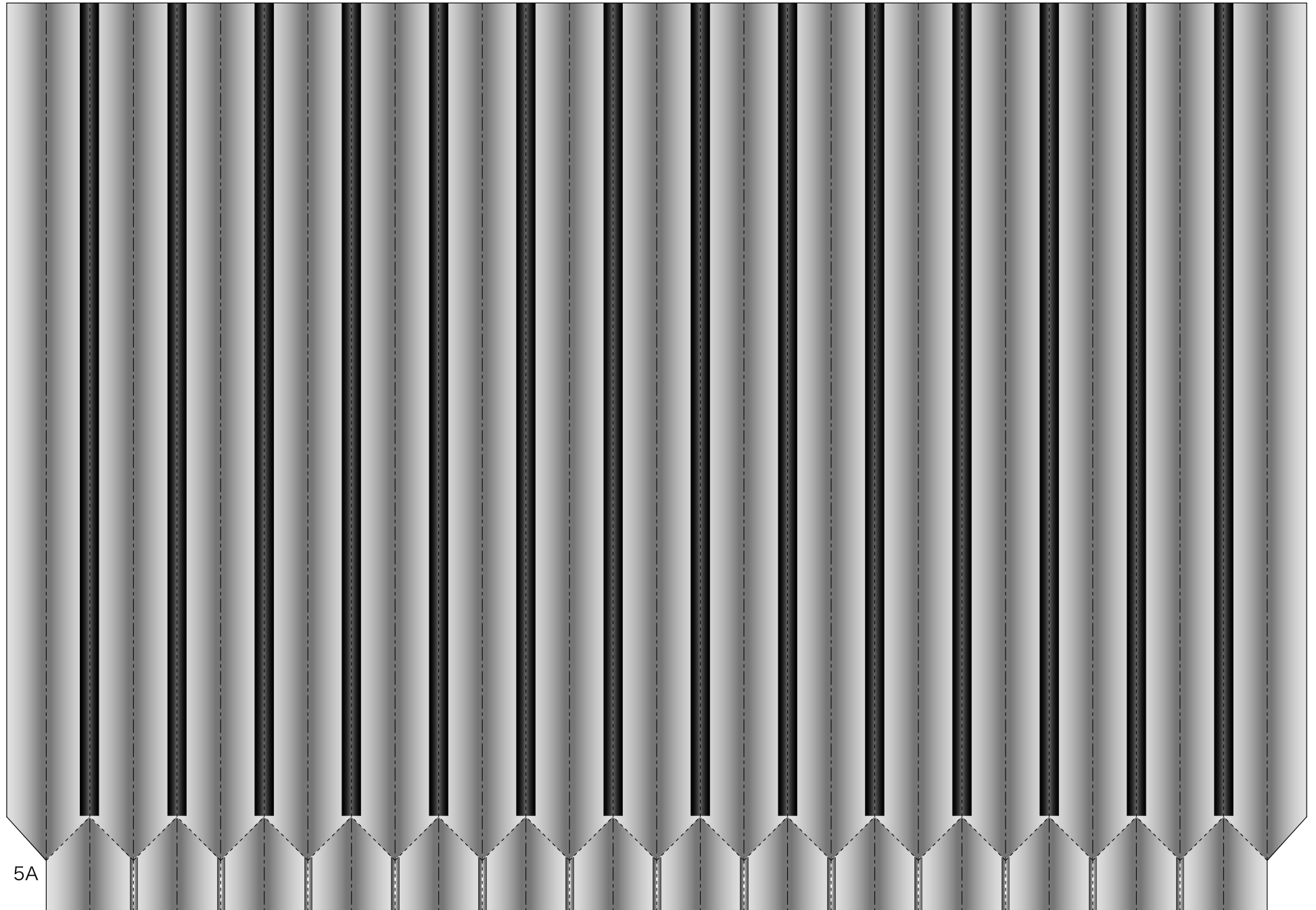
4A



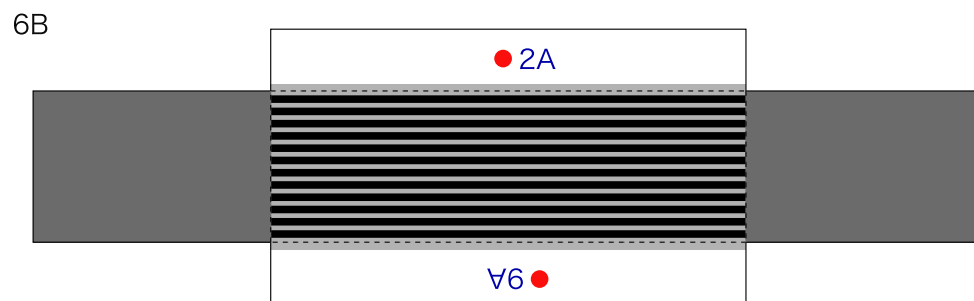
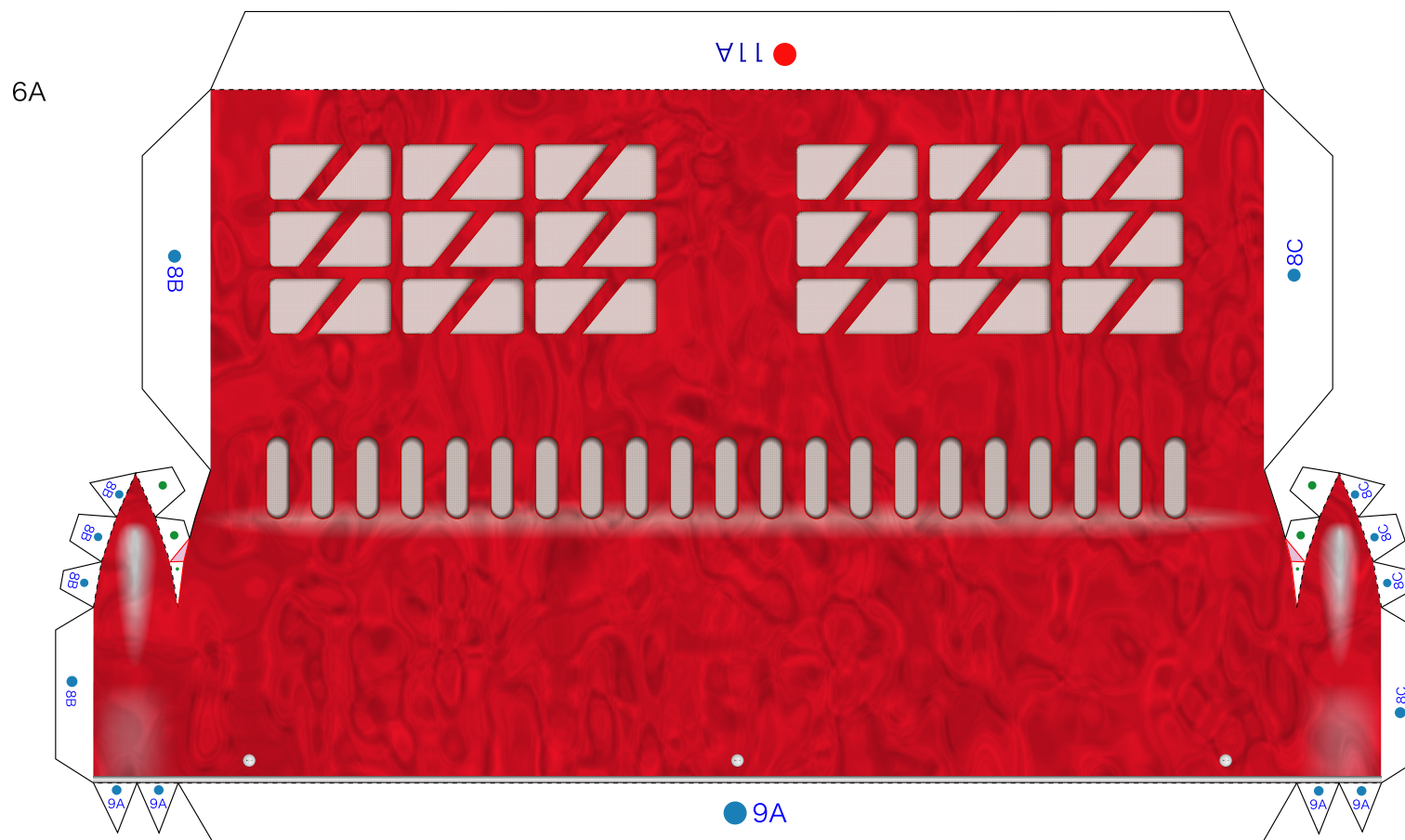
5A

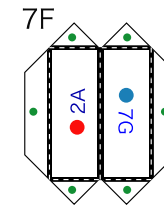
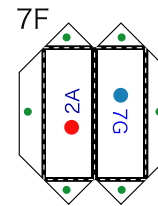
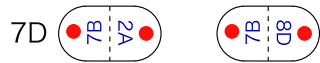
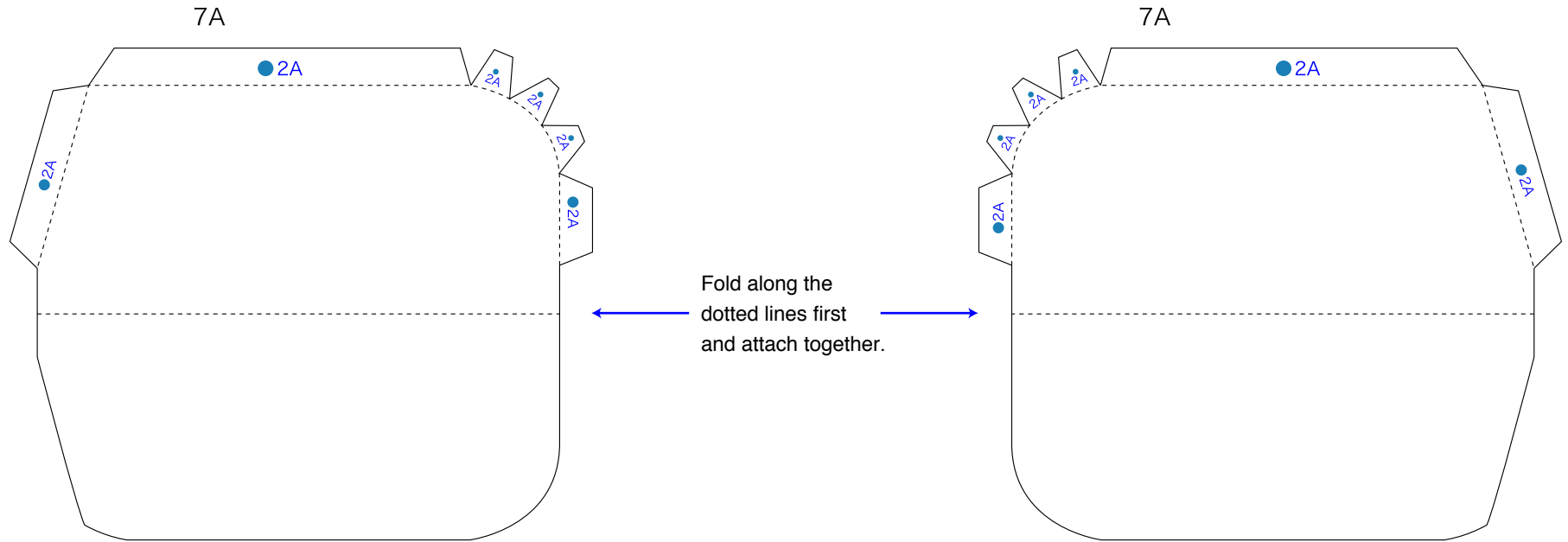


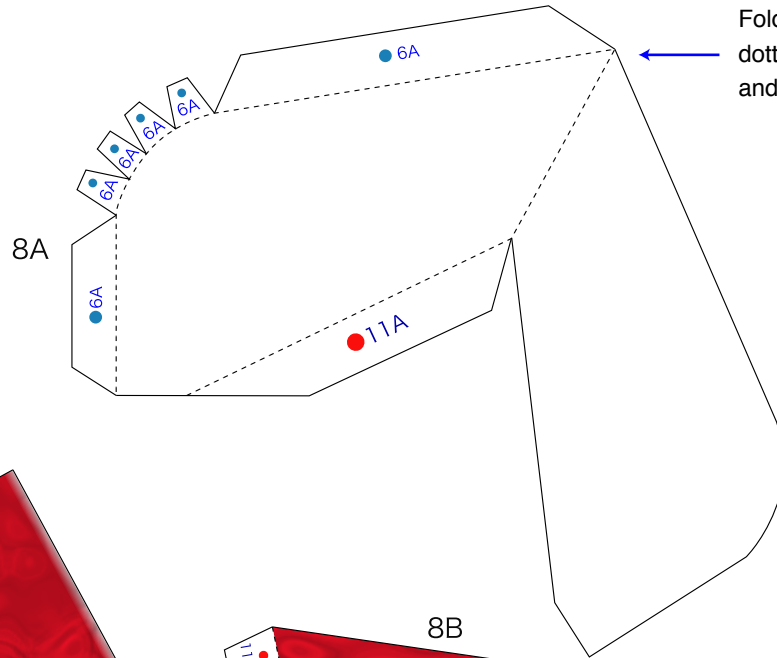
4A



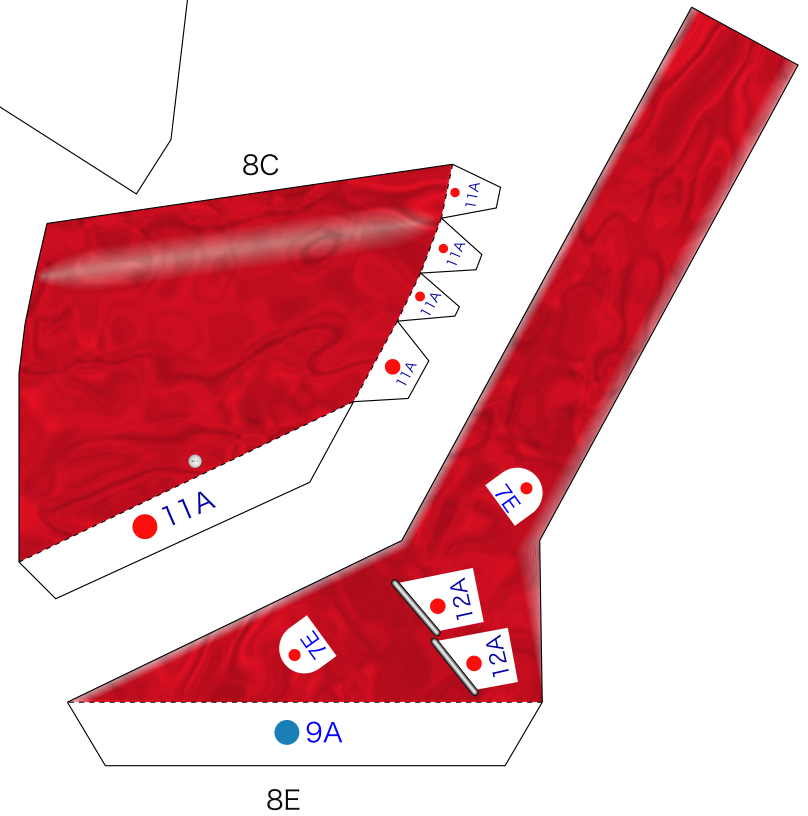
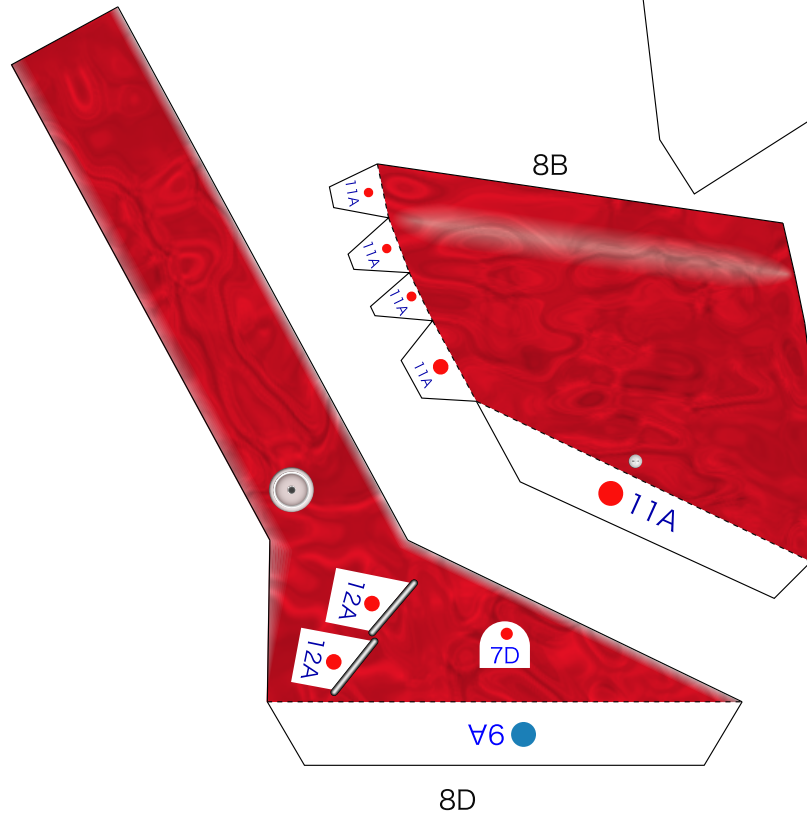
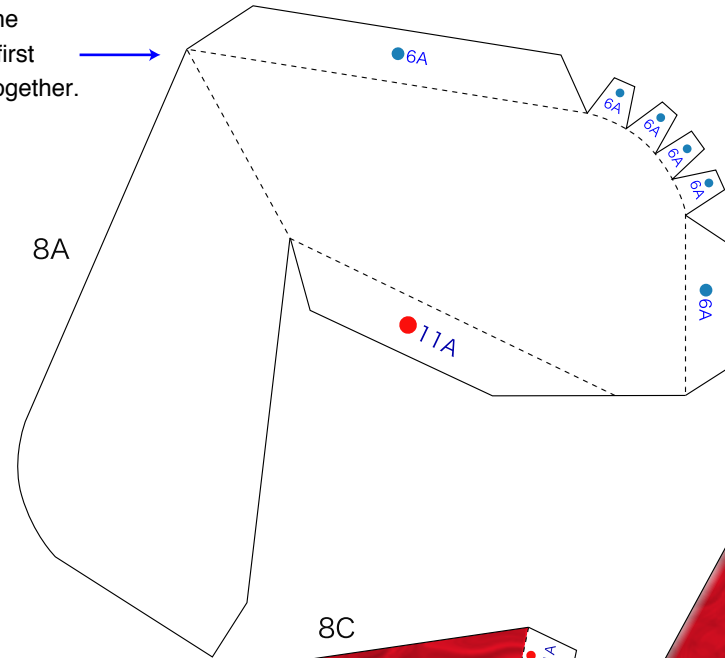
5A



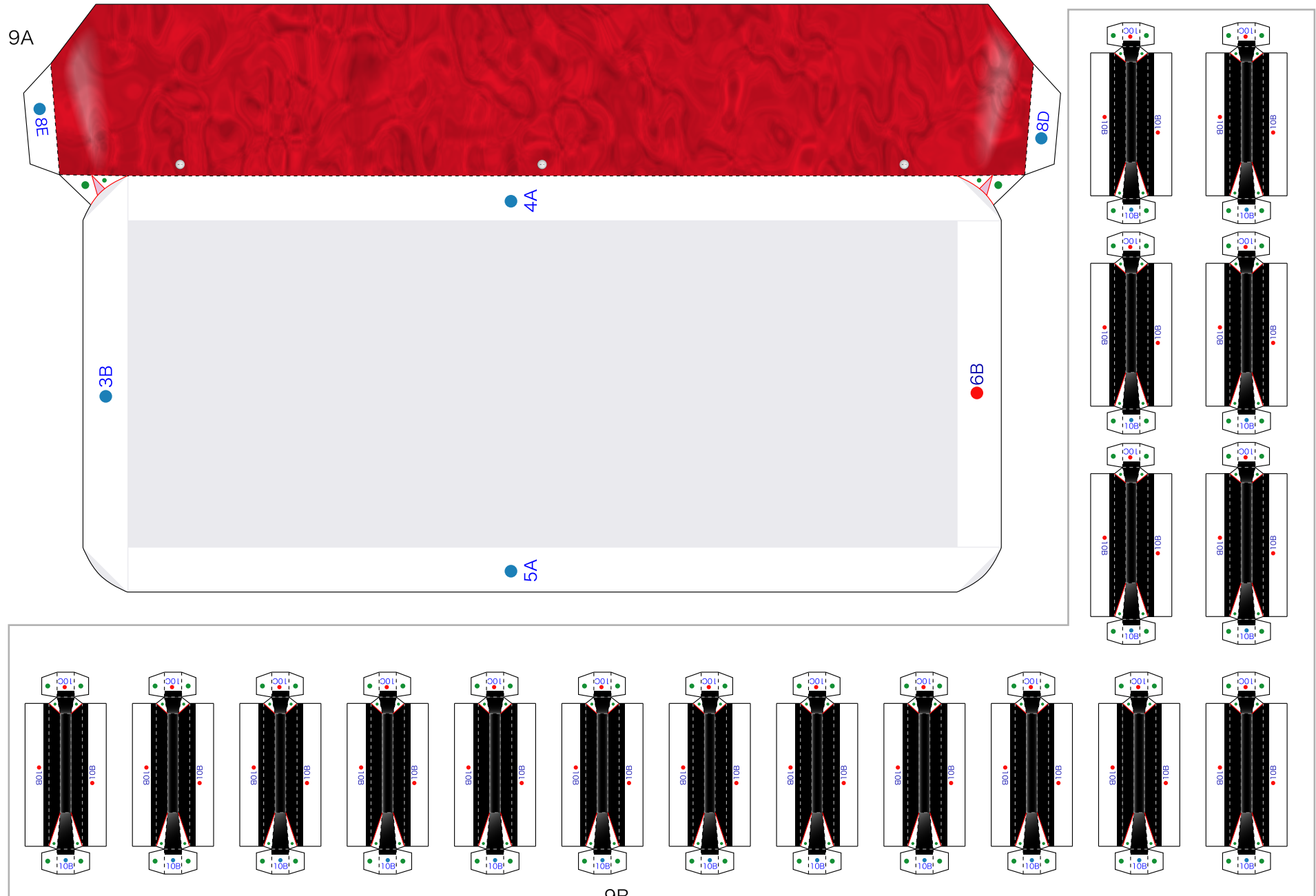




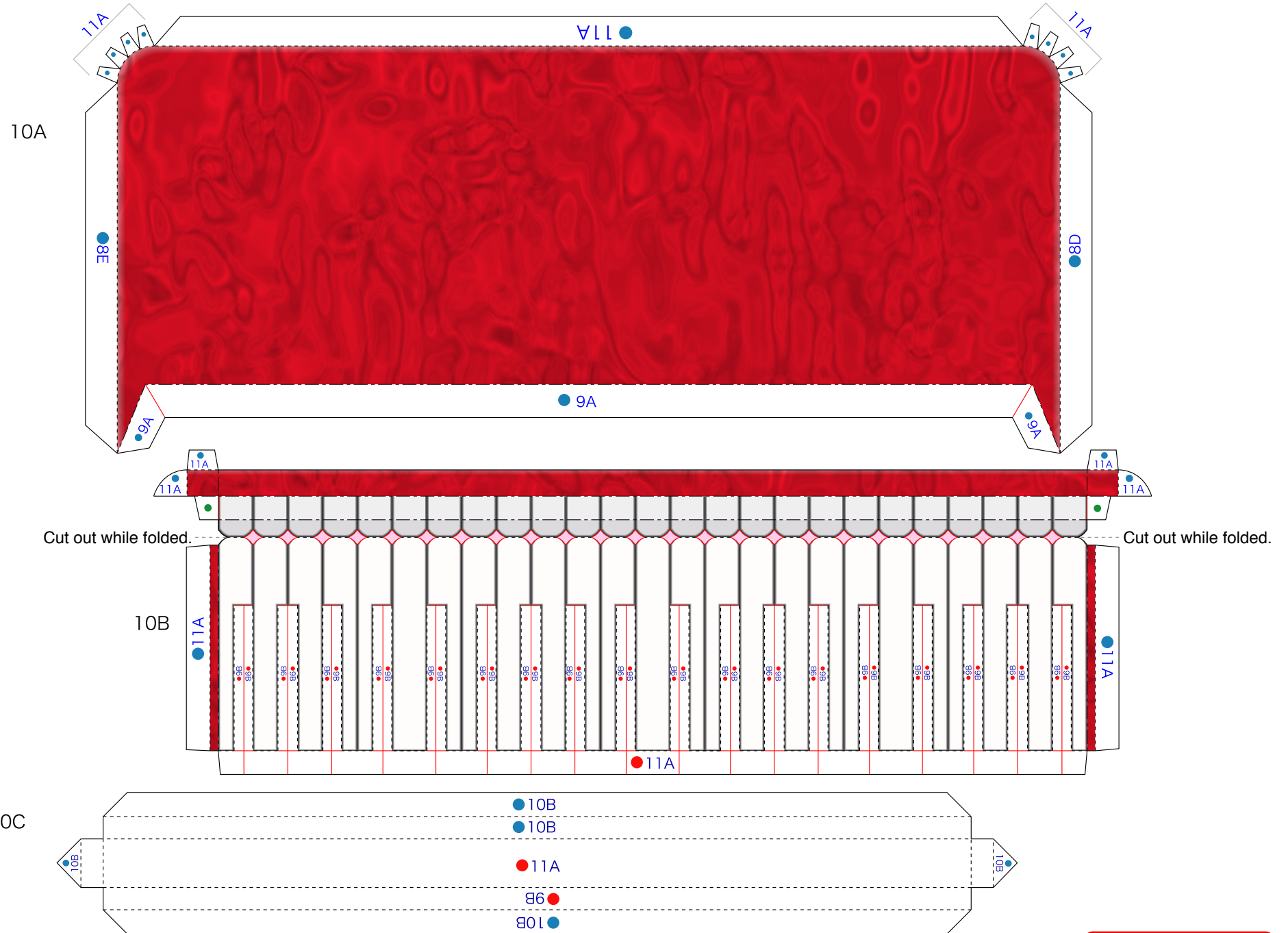
Fold along the dotted lines first and attach together.



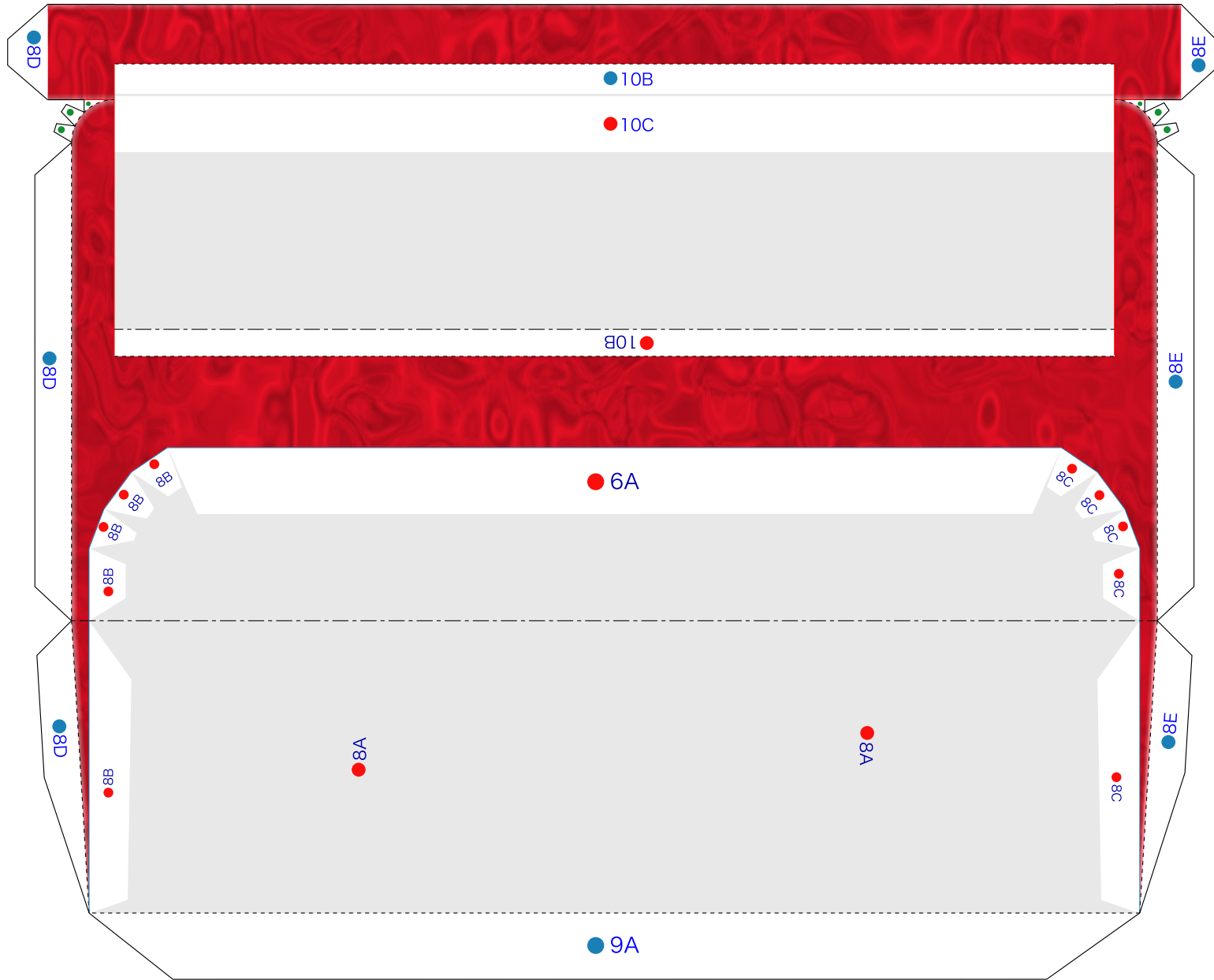




9B



11A



11B

