

Completed image



Example arrangement



You will need

- Scissors, glue, ruler, dried-up ballpoint pen, rounded pencil (or similar object)

Assembly tips

- Begin by placing the ruler against the fold lines and drawing the empty ballpoint pen over them so that it is easy to make clean folds.
- Shaping the stem by rounding it using the rounded pencil or similar object will make it easier to roll.

Lines and icons

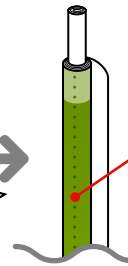
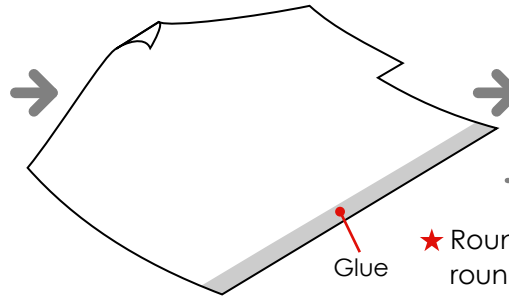
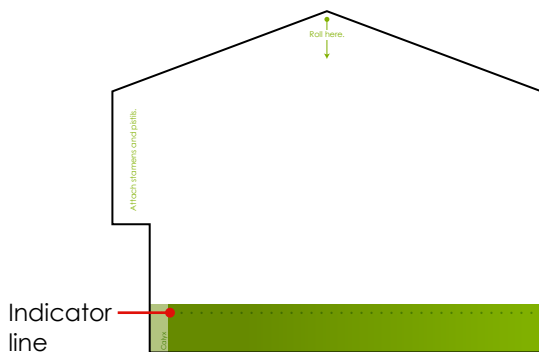
- Scissors line —————
- Mountain fold - - - - -
- Valley fold - - - - -
- Indicator line • • • • •
- Cut out ✕
- Tips ★

Caution

- \*Glue, scissors and other tools and materials may be harmful to children.  
Please keep your work out of the reach of children.

### 1 Make the Stem

Cut the stem out along the scissors line and roll it tightly starting at "Roll here."



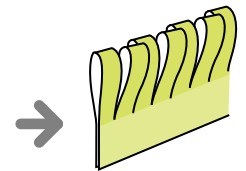
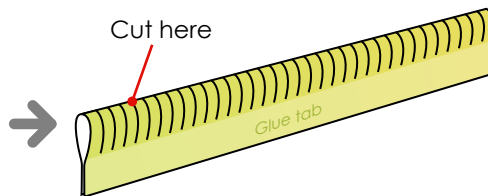
Adjust so that the indicator line is just hidden when completely rolled then glue in place.

★ Rounding it first using the rounded pencil or similar object will make it easier to roll.

### 2 Attach Stamens and Pistils to the Stem

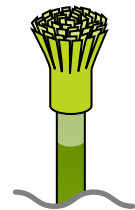
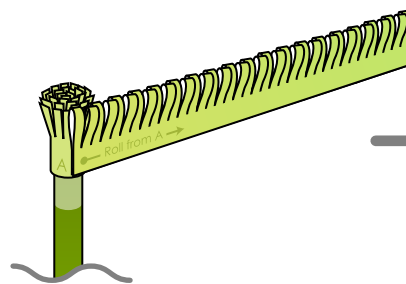
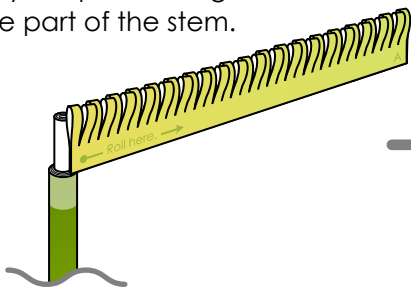
Cut out along the scissors line. Without creasing the paper, spread glue on the back side of the glue tab, bend in half and glue together.

Cut both sides at the same time along the scissors lines of the curved portion.



Prepare stamens and pistils 1 and 2 in the same fashion. Spread glue on the glue tab of 1 and tightly wrap it, starting at "Roll here," around the white part of the stem.

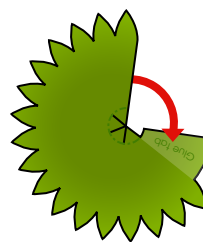
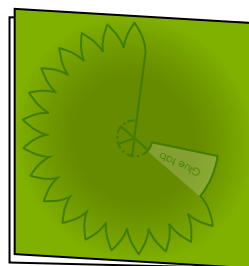
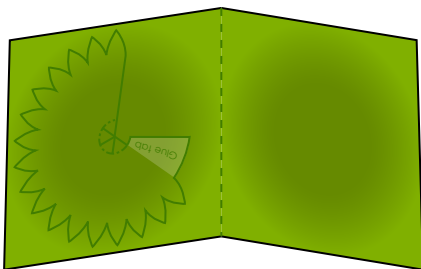
Attach "A" of stamen and pistils 2 to "A" at the end of 1, and continue tightly wrapping from "Roll from A."



### 3 Make the Calyx

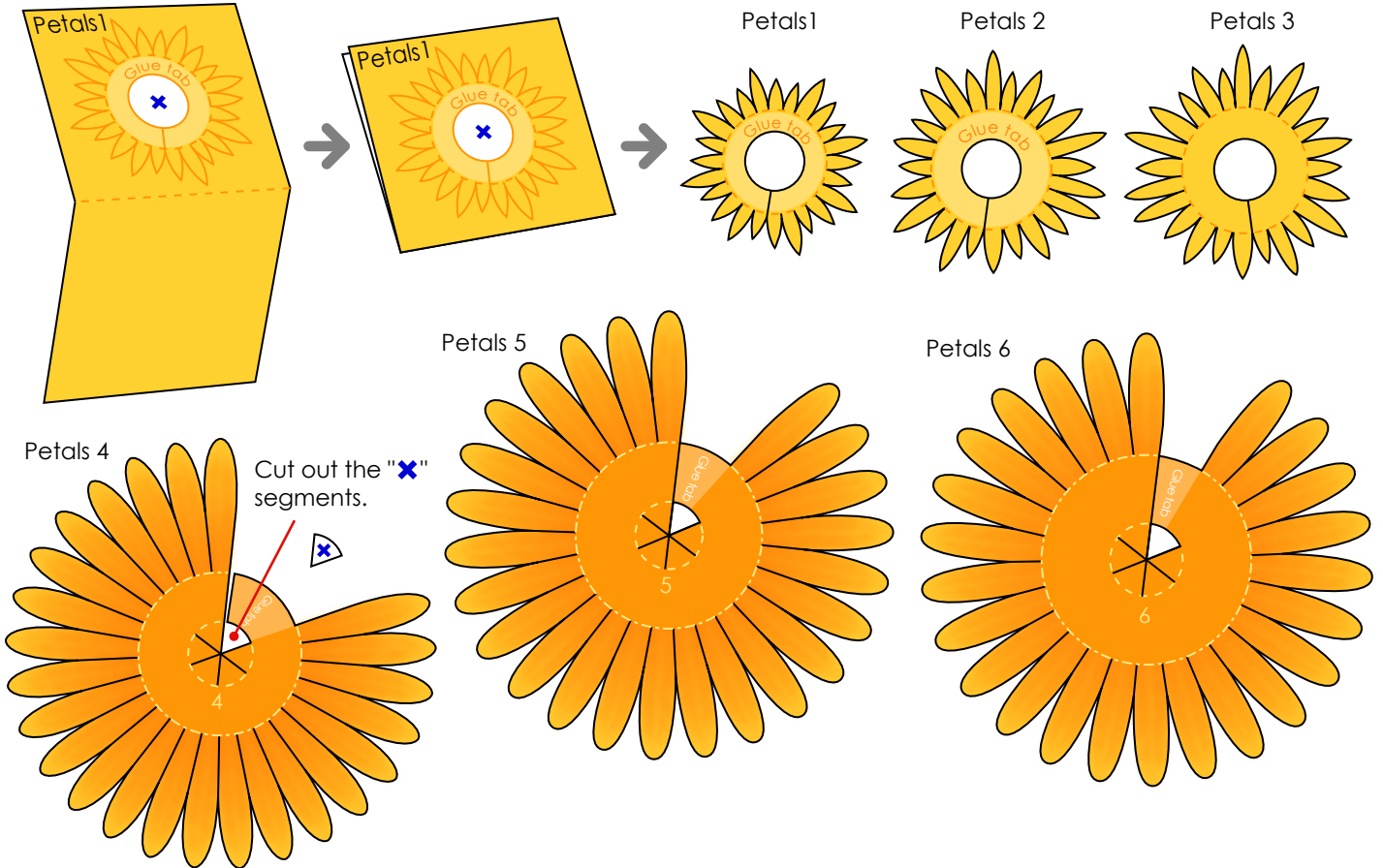
Cut along the square border containing the calyx then fold in half, glue in place and cut the calyx out.

Glue the glue tabs together to create a cone.



**4** Make the Petals

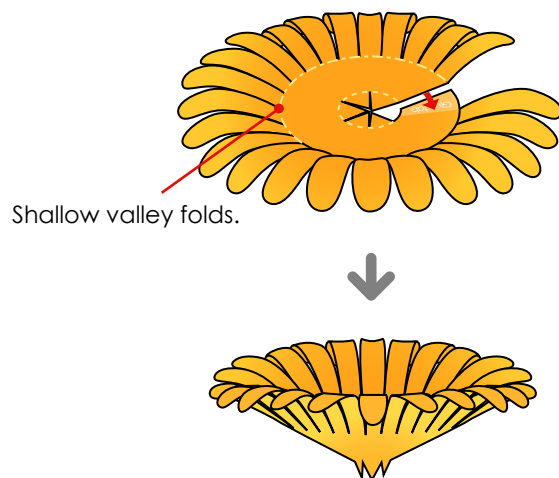
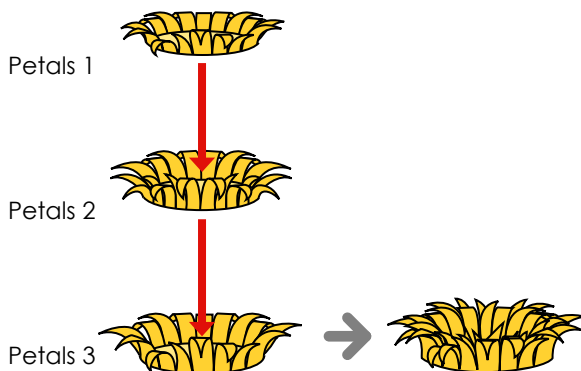
For petals 1 to 6, cut along the square border containing the petals then fold in half, glue in place and cut the petals out.



For petals 1 to 3, fold to approximately right angles along the mountain lines then create small curves. Check the hole sizes by passing them along the stem up to the place where the stamens and pistils you made in step 2. are attached.

Adjust the hole sizes if they are too small to fit over. Position petals 1, 2 and 3 so that the layers appear staggered.

Round petals 4 to 6 and apply shallow valley folds at the base of each individual petal. Apply glue to the glue tab and set into a conical shape.

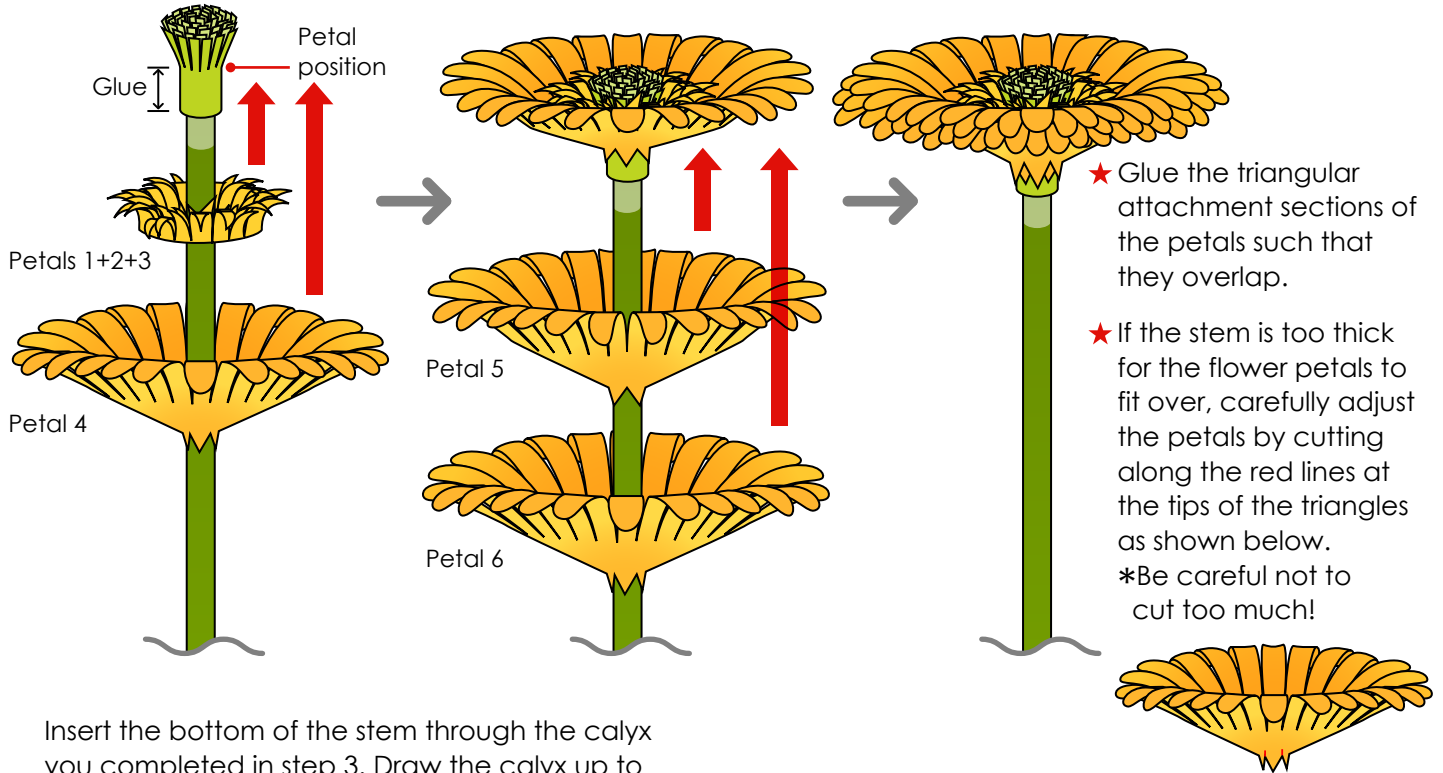


## 5 Complete the Gerbera

Apply glue to the stamens and pistils you made in step 2. Pass petals 1+2+3 and 4 up to the "Petal position" (as shown below) and attach the triangular cut-out portion of petal 4.

Apply glue to the attachment portion of petal 4 and attach petals 5 and 6 in the same fashion.

\*Position petals 4, 5 and 6 so that they appear staggered.



Insert the bottom of the stem through the calyx you completed in step 3. Draw the calyx up to the "Calyx position" and glue the triangular portions to hold the flower petals in place.

Finish by adjusting the shape of the petals.

