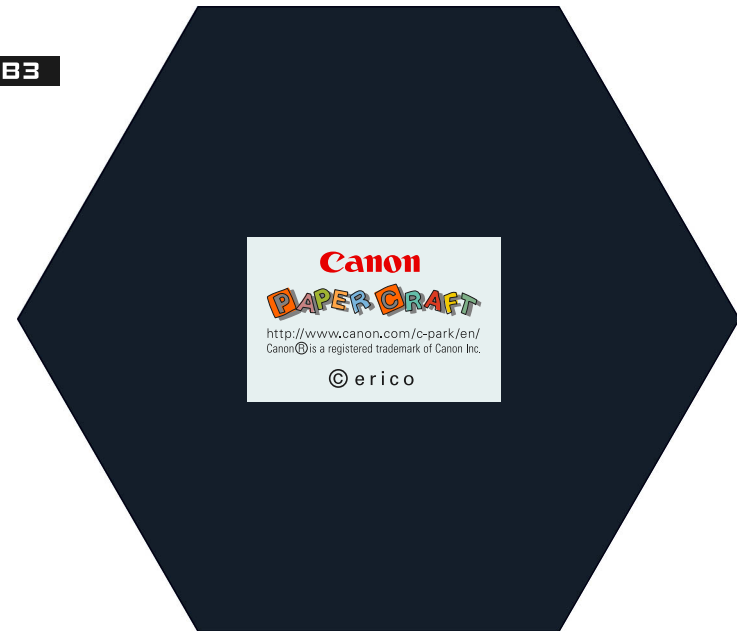




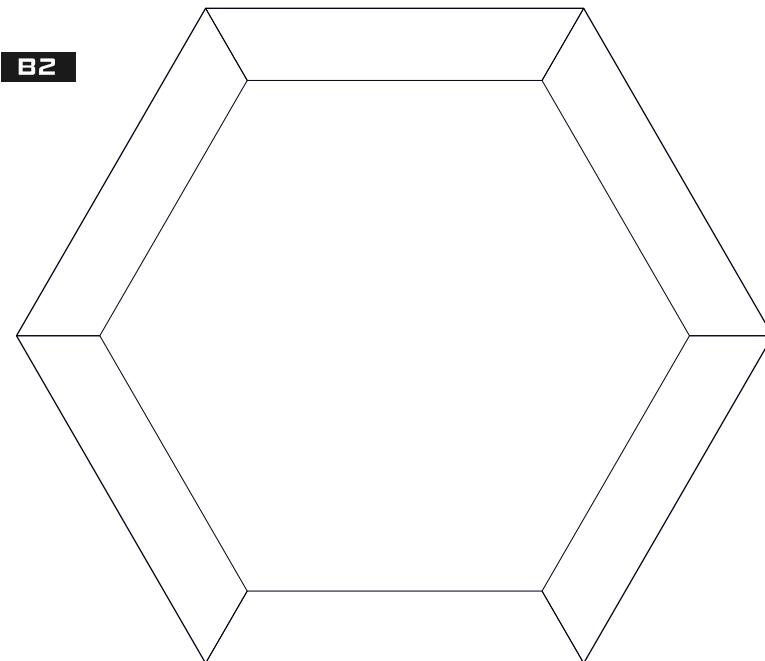
<http://www.canon.com/c-park/en/>



B3



B2



You will need

Scissors, glue, a used ball-point pen



Assembly Tip

Trace along the folds with a ruler and a used pen (no ink) to get a sharper, easier fold.



Caution

Glue, scissors and other tools may be dangerous to young children, so be sure to keep them out of the reach of young children.



Notation Key

----- Mountain fold

- - - - - Valley fold

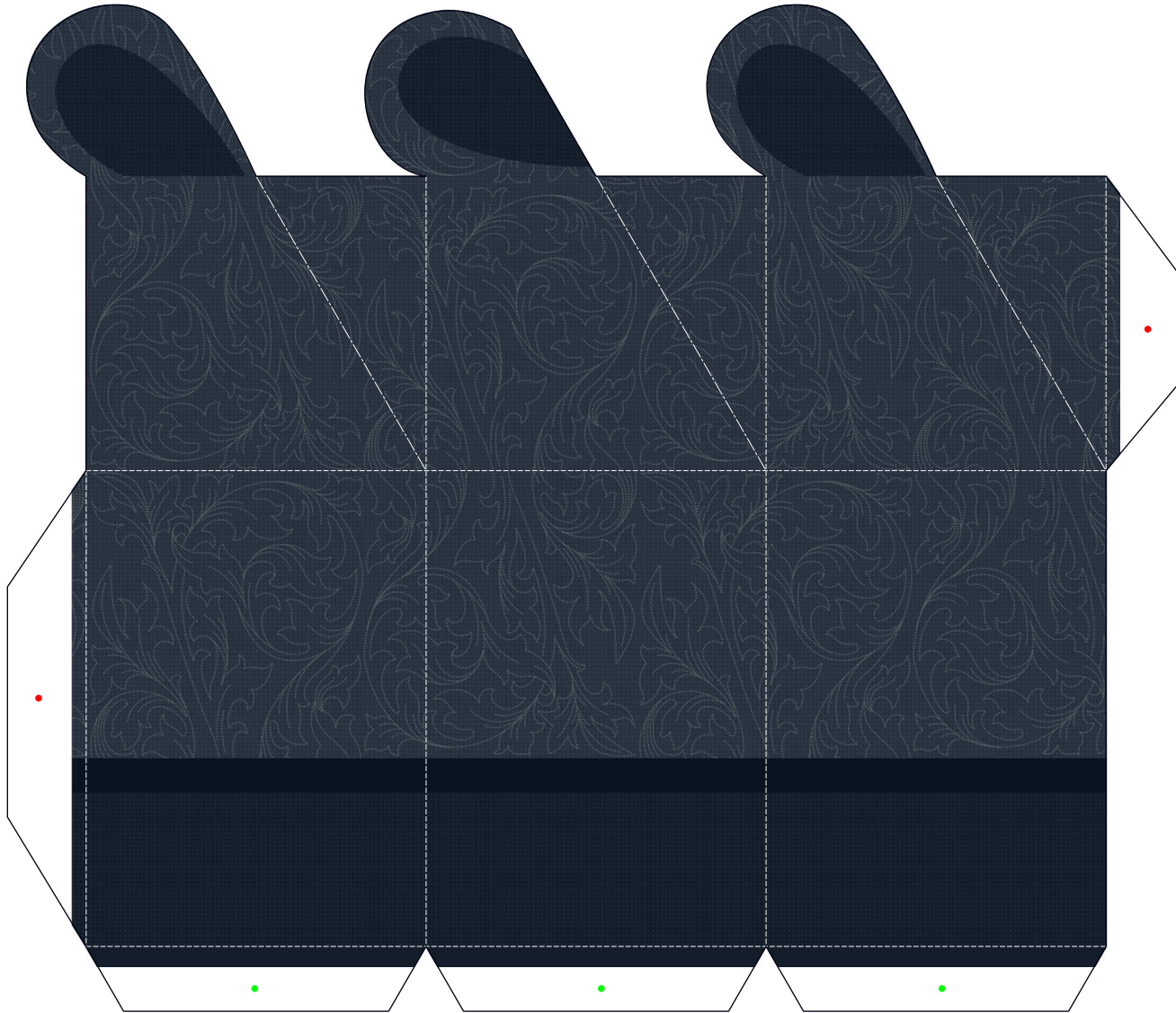
———— Scissors line

———— Cut in line

● Glue

● Glue reverse side

B1



B1

