

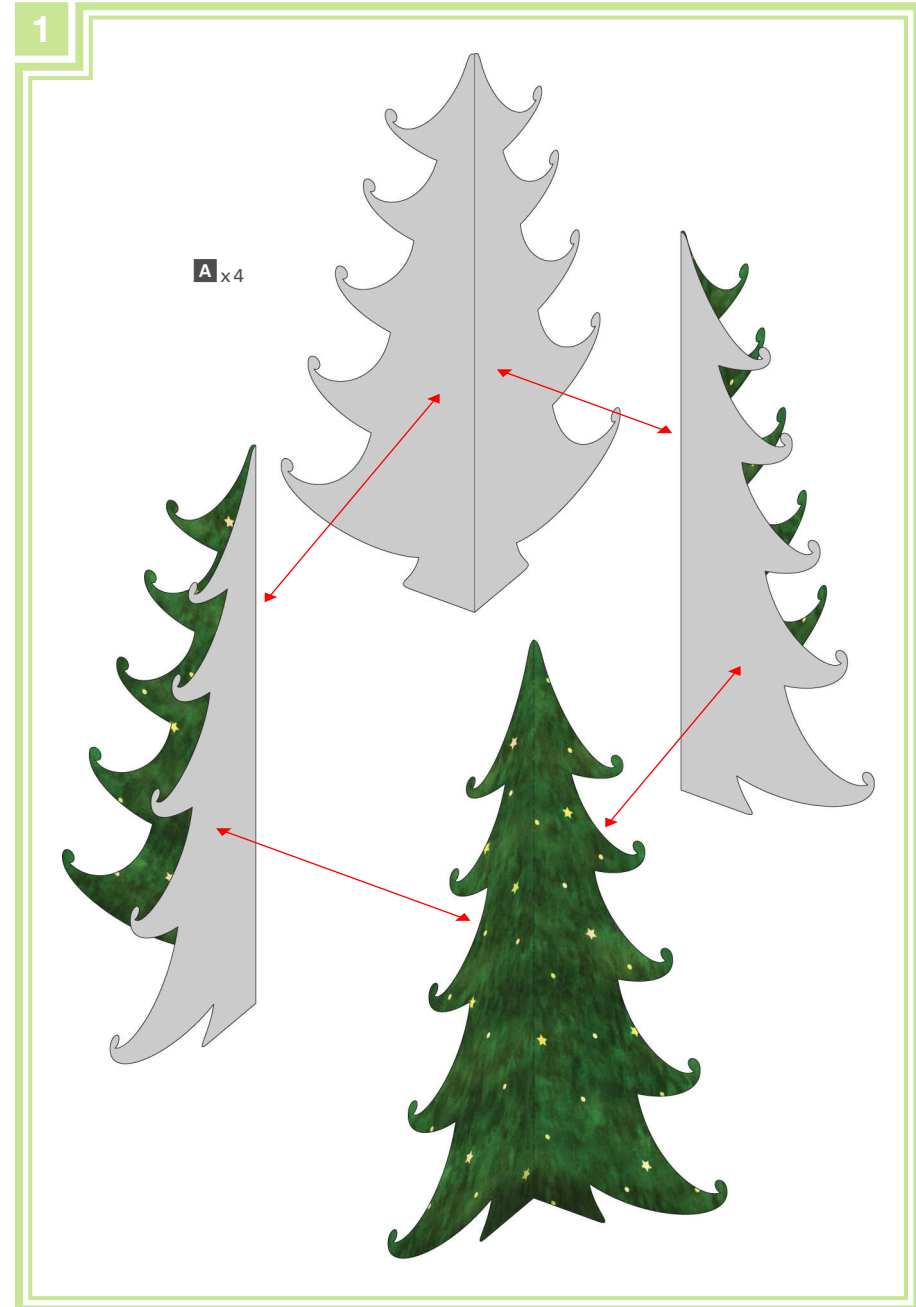


● **Pattern:** 6 sheets ● **Assembly Instructions:** 2 sheets ● **Number of parts:** 60

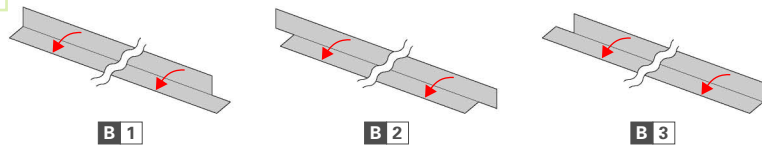
■ **You will need:** Scissors, Glue

----- Mountain fold    - - - - - Valley fold    \_\_\_\_\_ Scissors line

**Caution:** Glue, scissors and other tools may be dangerous to young children so be sure to keep them out of the reach of young children.



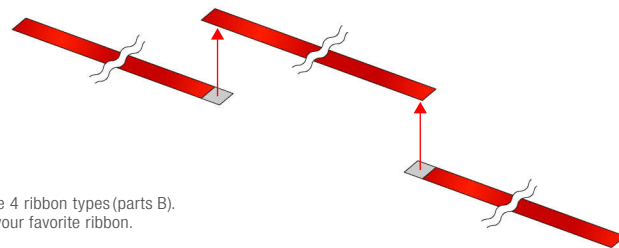
2



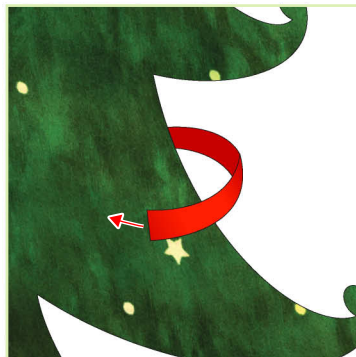
B 1

B 2

B 3



There are 4 ribbon types (parts B).  
Choose your favorite ribbon.

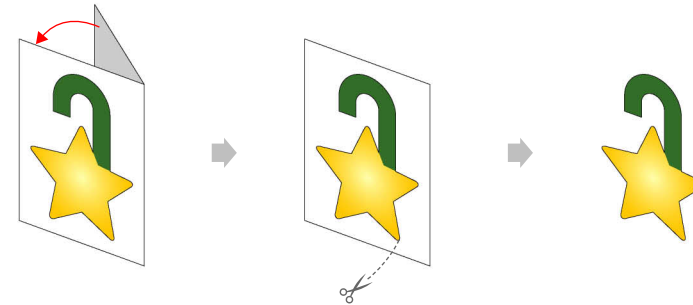


Curl it and twist it around the tree.



If you wish, decorate the tree with a ribbon.

3



**C** All the ornaments (parts C) can be made the same way.  
Choose the ones you like to decorate the tree.



Decorate the tree just the way you like and you're done!



Ornaments can be hung on the ribbon.