



## GG1-type Electric Locomotive

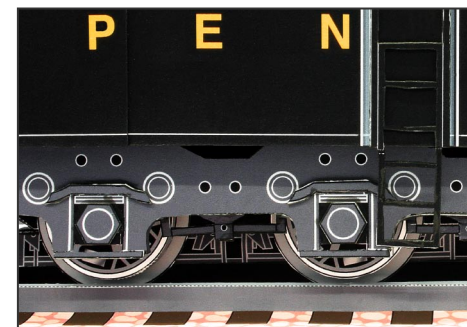
The GG1-type electric locomotive was developed and owned by Pennsylvania Railroad, an American company. It was known throughout the world because of its sleek body by French designer Raymond Loewy and is considered Pennsylvania Railroad's "signature locomotive." A total of 139 locomotives were manufactured from 1934 to 1943 and they remained in service until the beginning of the 80s. Today, although they are no longer in use and many have been scrapped, we can still find some in museums, etc. This "GG1-type Electric Locomotive" papercraft is approximately 1/56 of the original size.

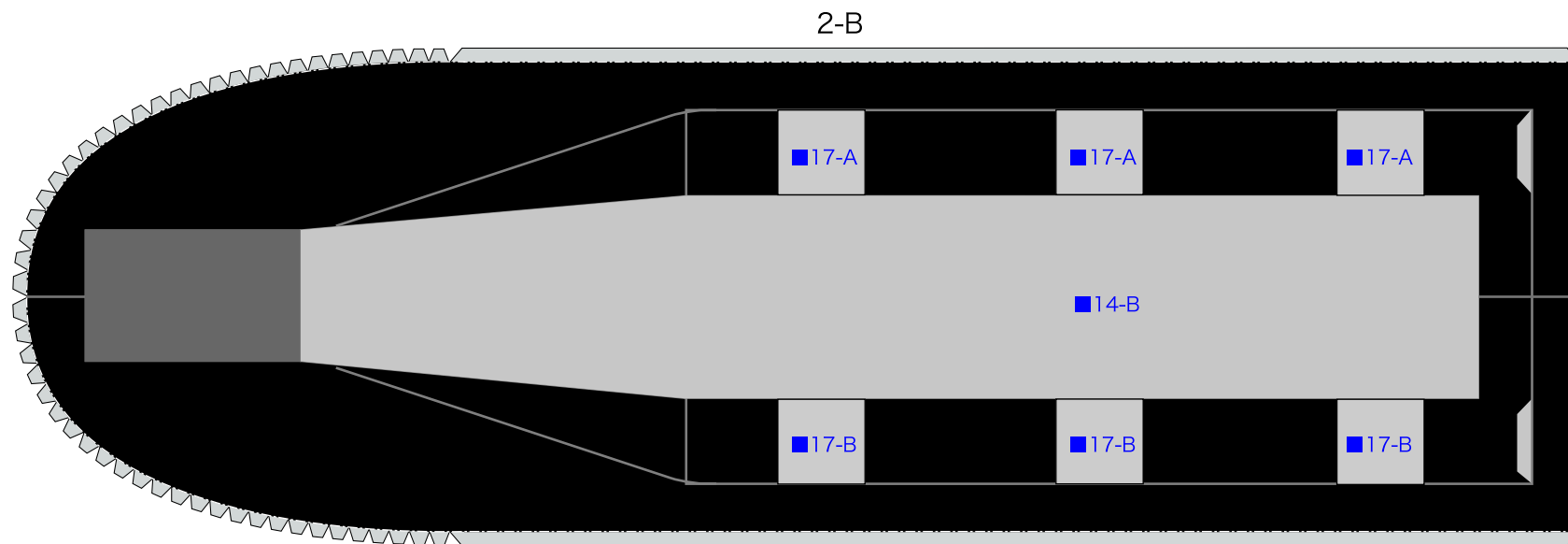
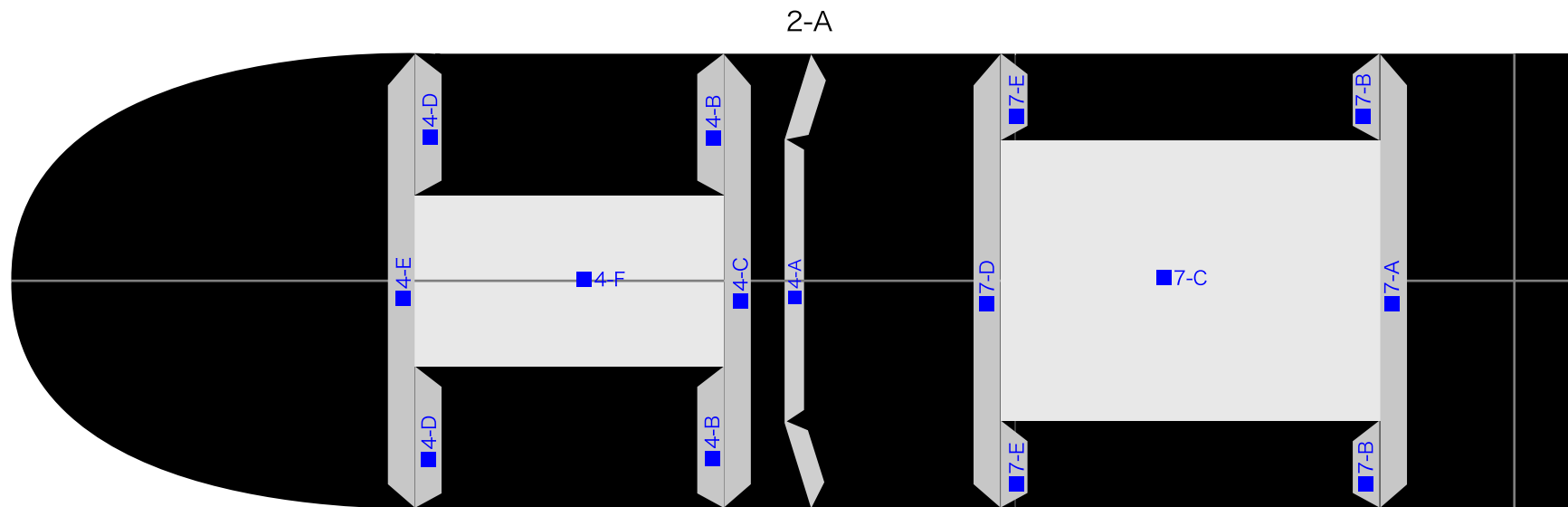
\*This model was designed for Papercraft and may differ from the original in some respects.

■ Parts list (Pattern) : Twenty three A4 sheets

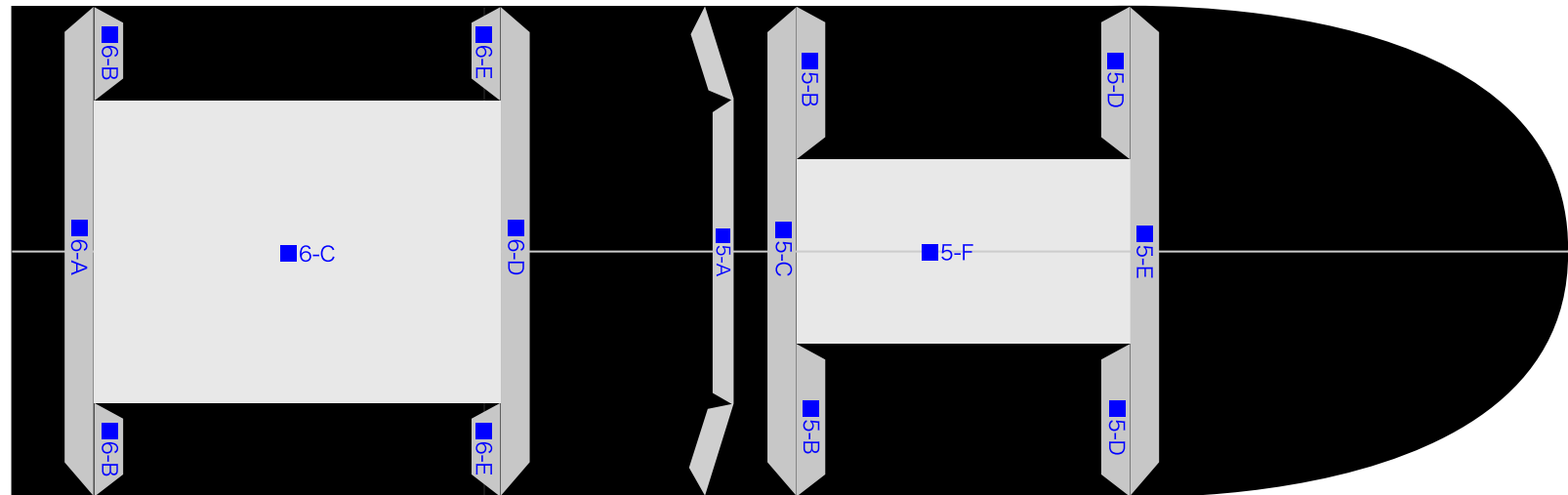
■ No. of Parts: 562

\*Build the model by carefully reading the Assembly Instructions, in the parts sheet page order.

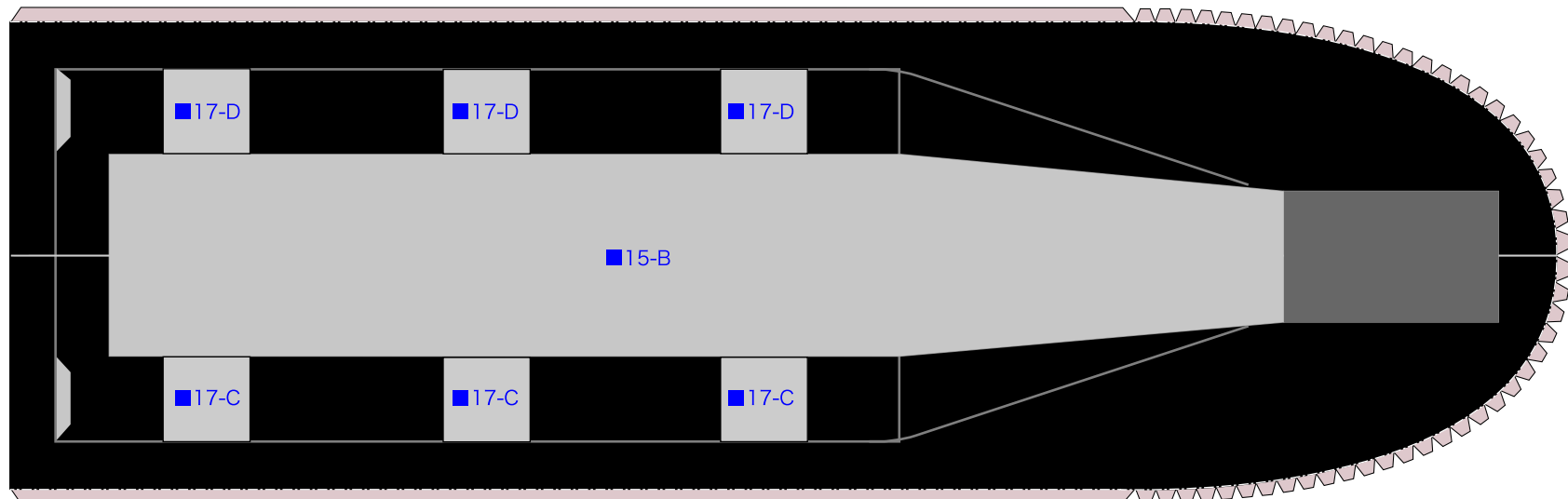


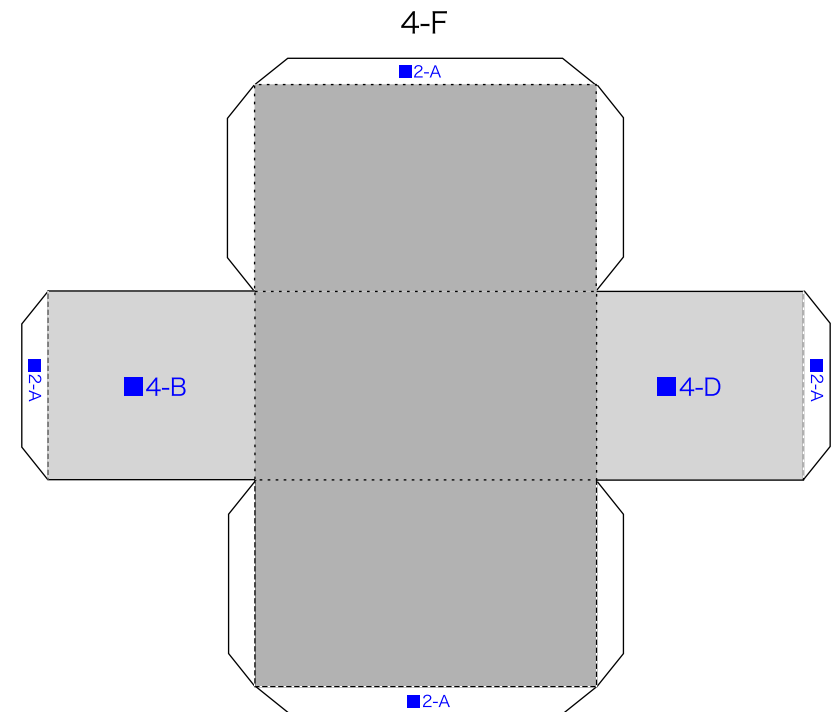
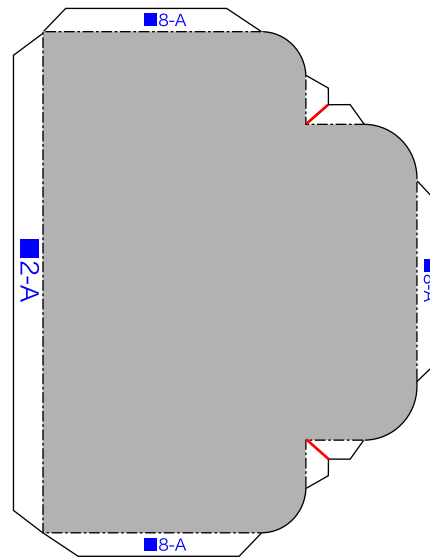
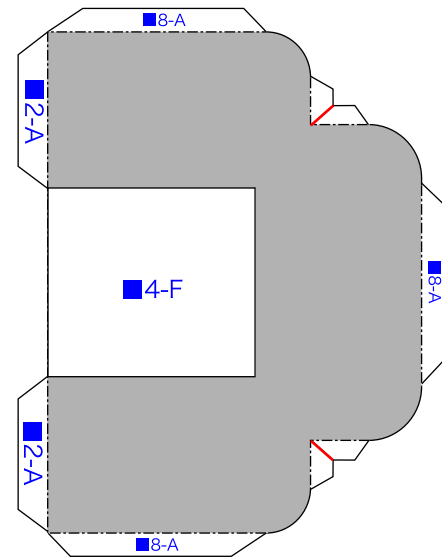
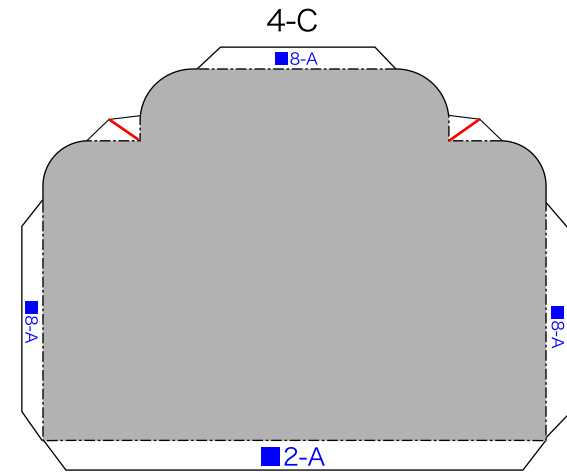
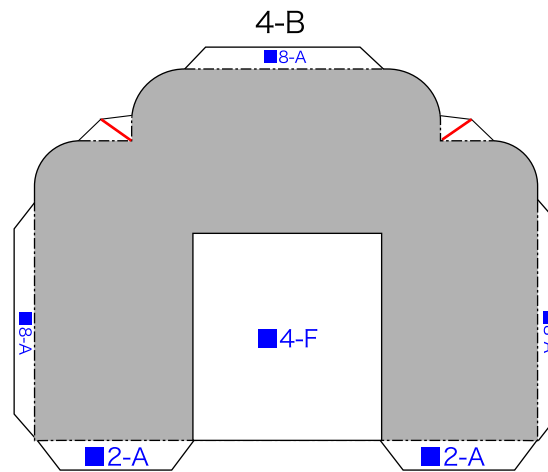
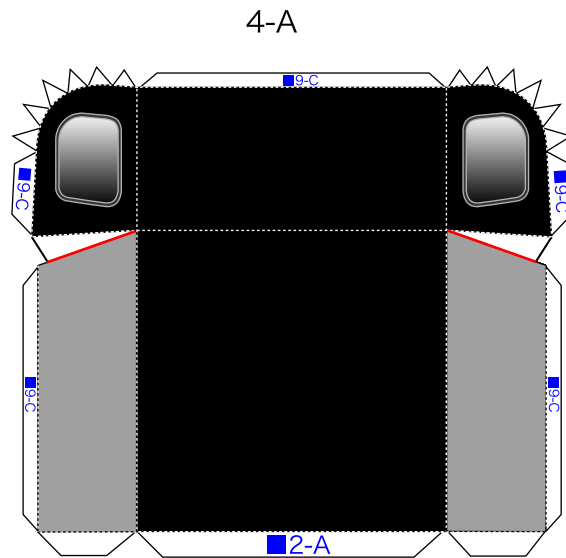


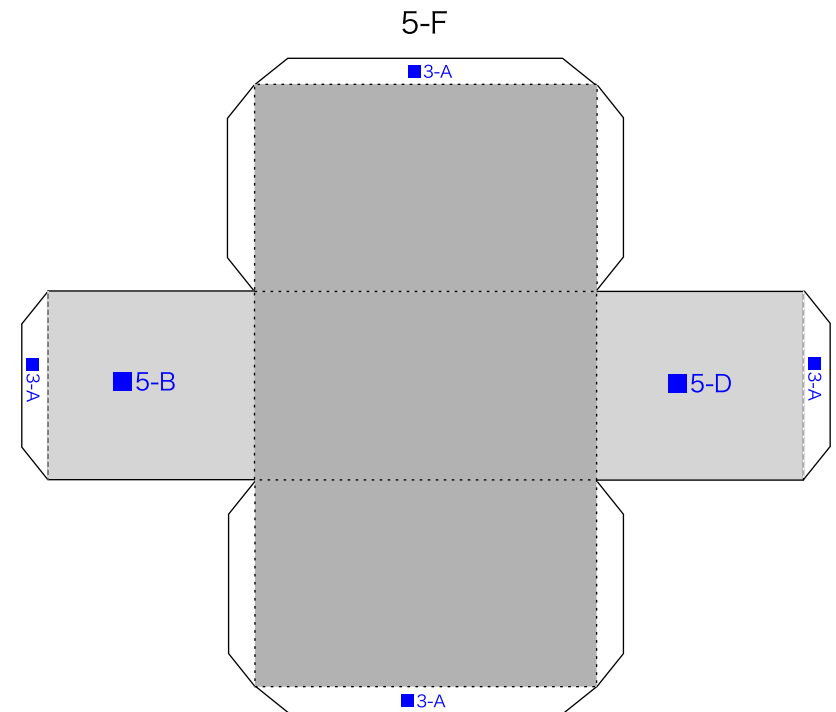
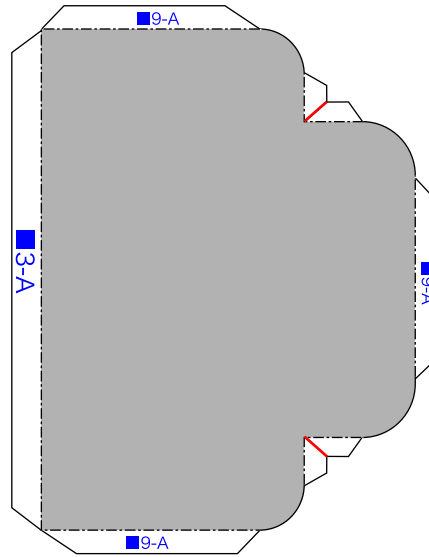
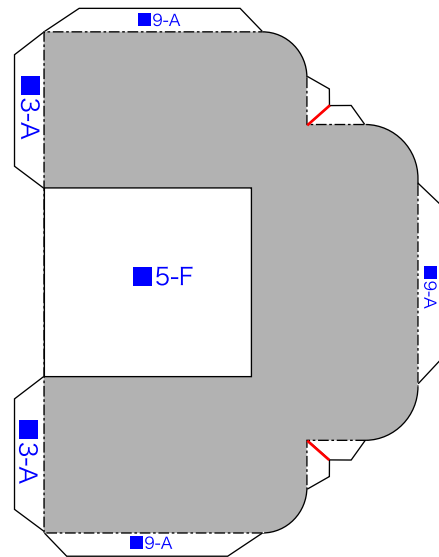
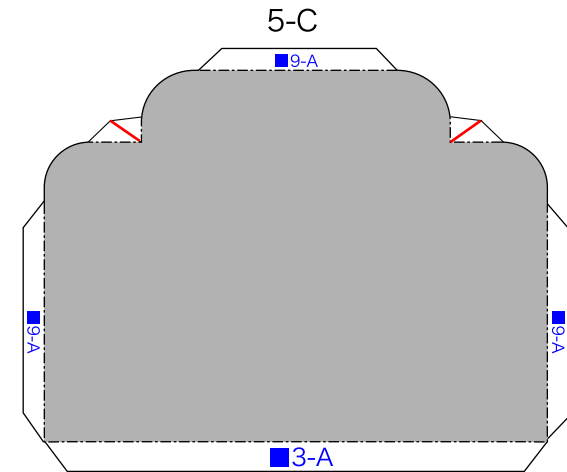
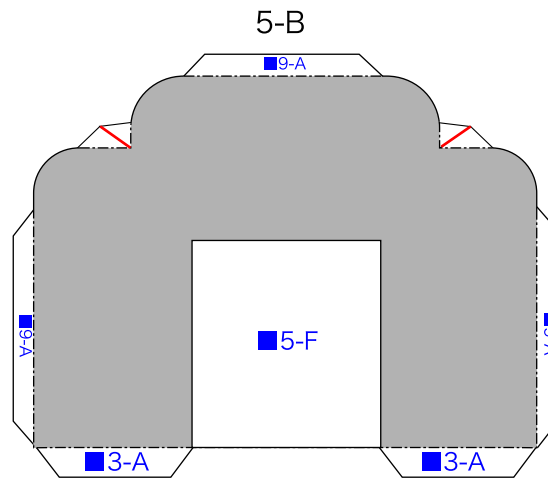
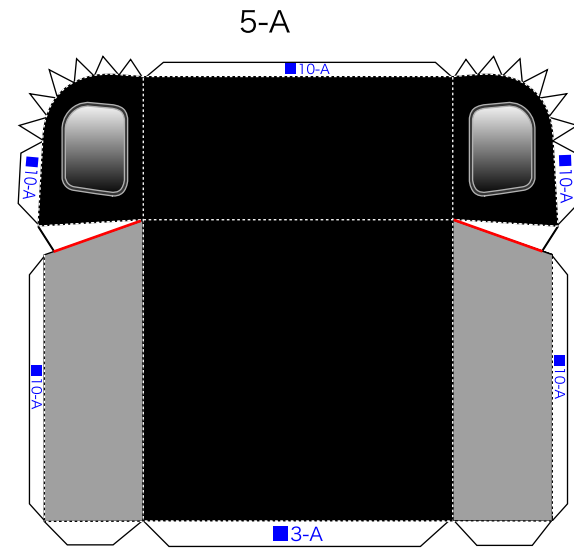
3-A

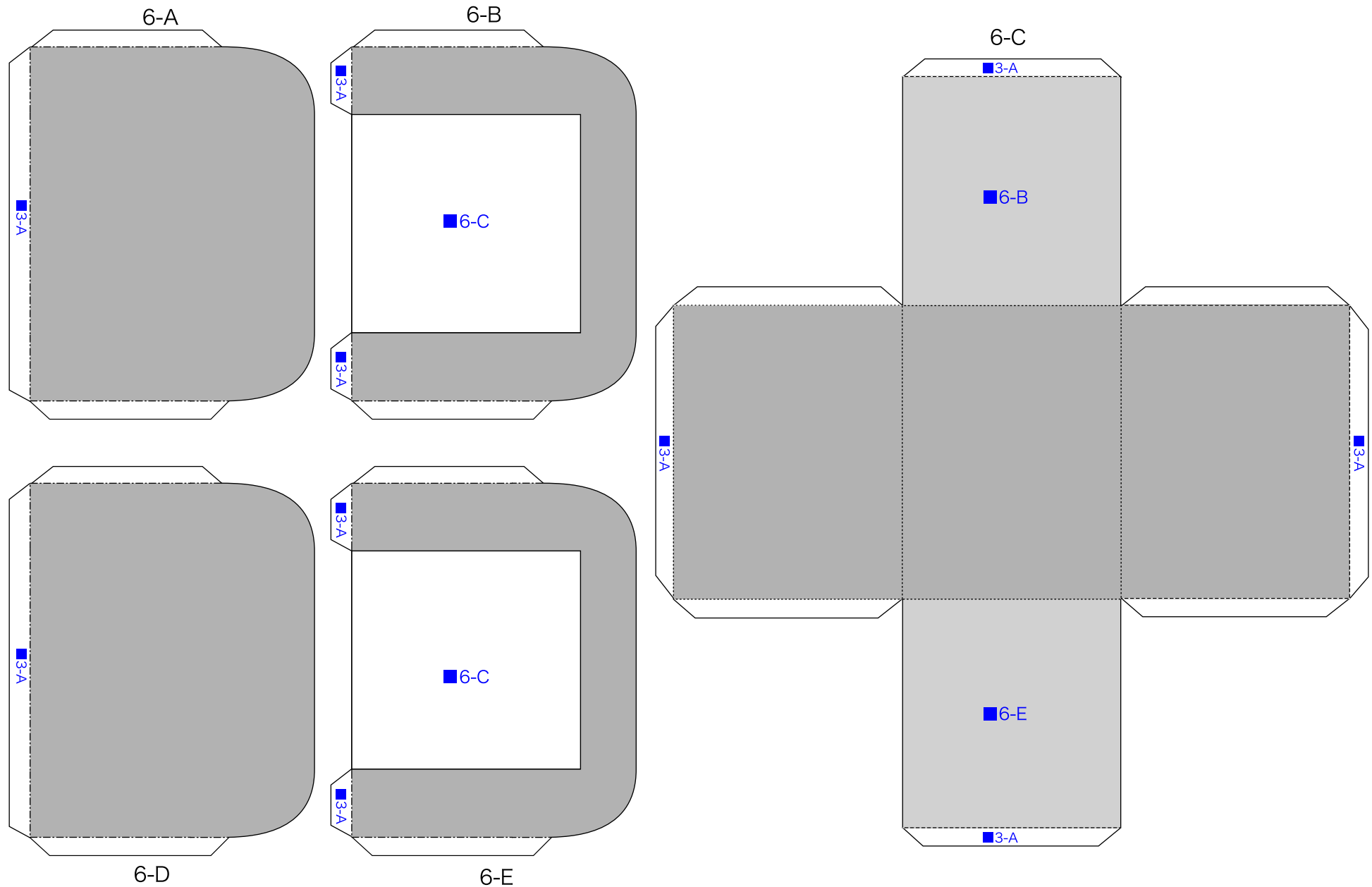


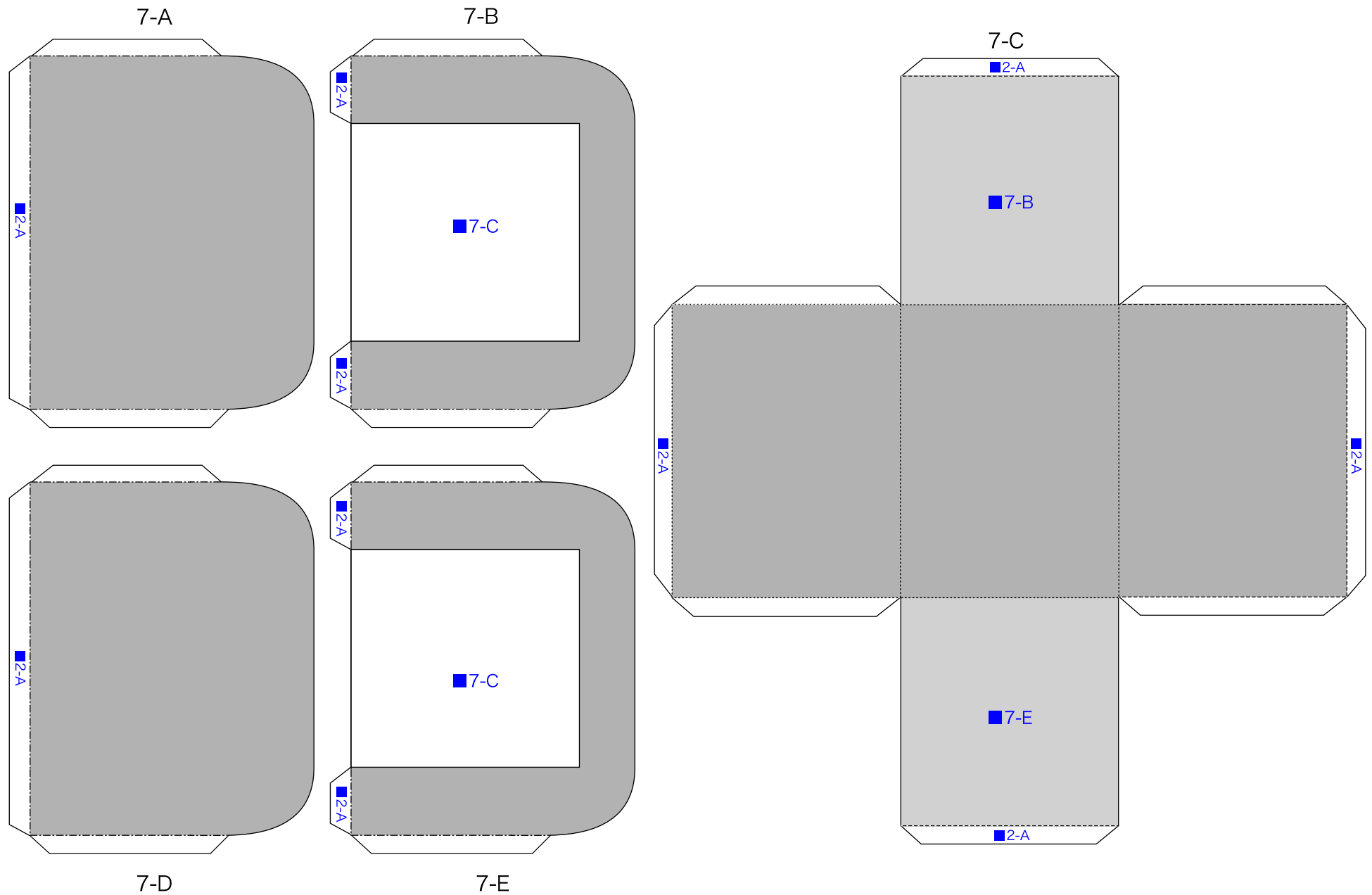
3-B

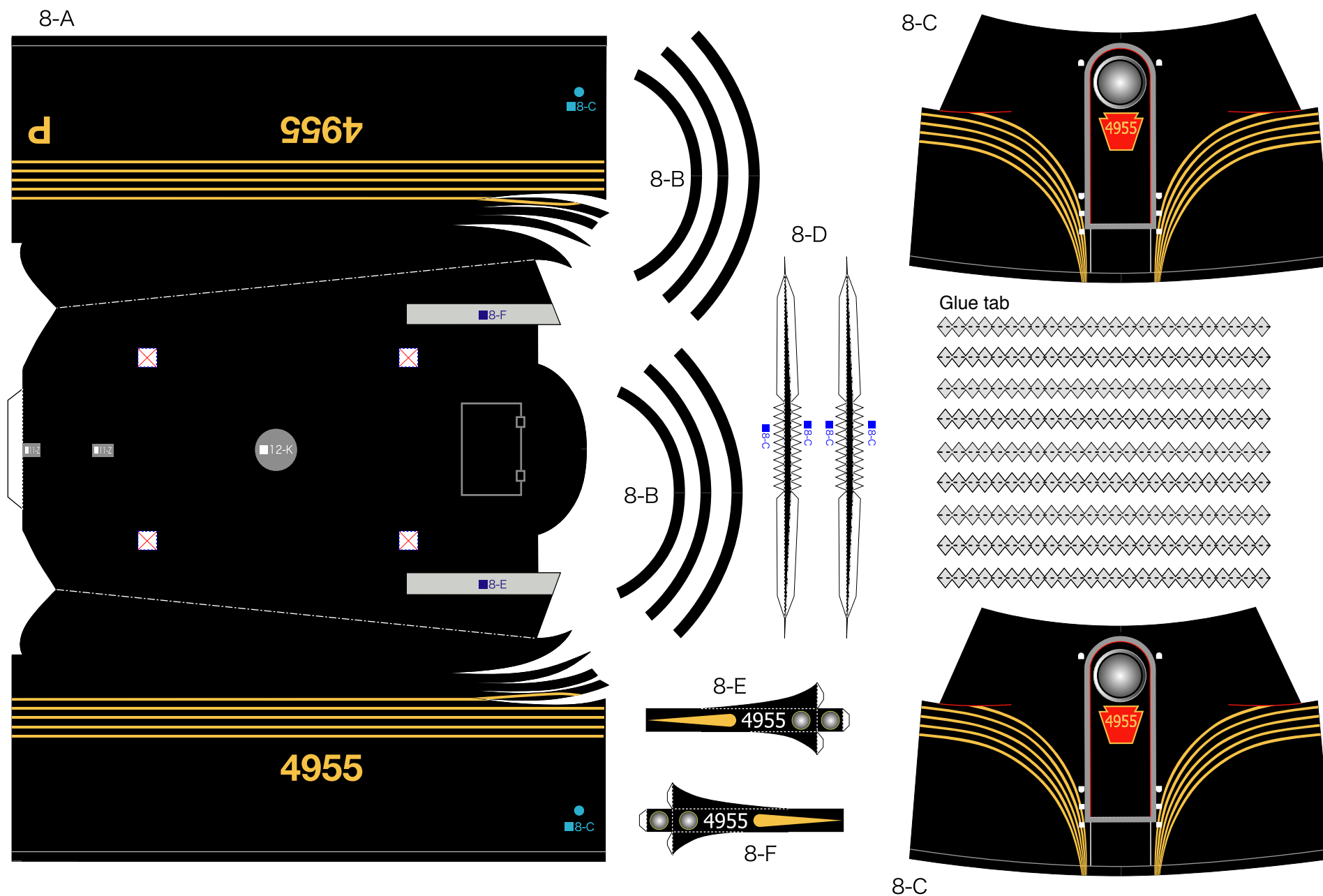




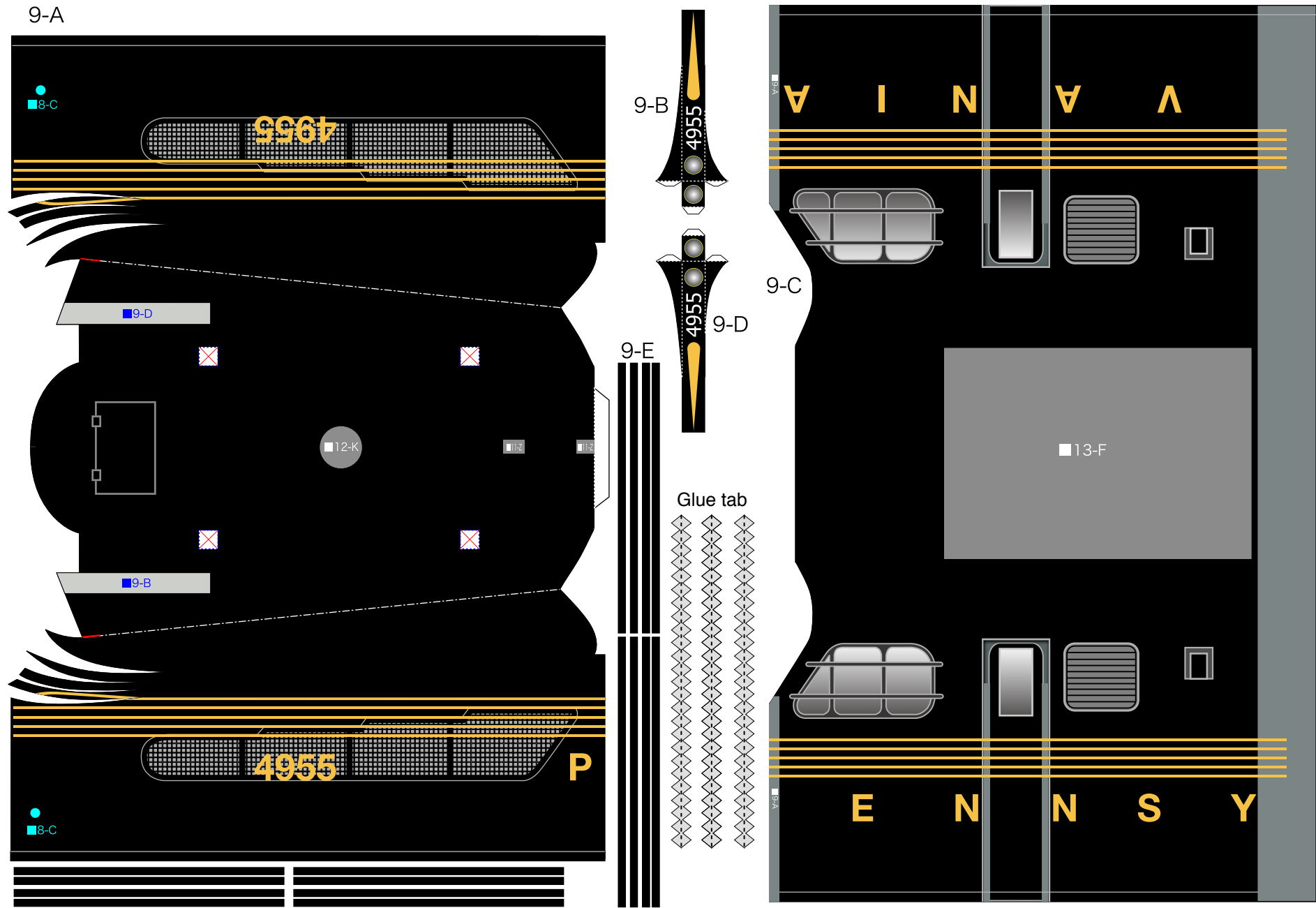


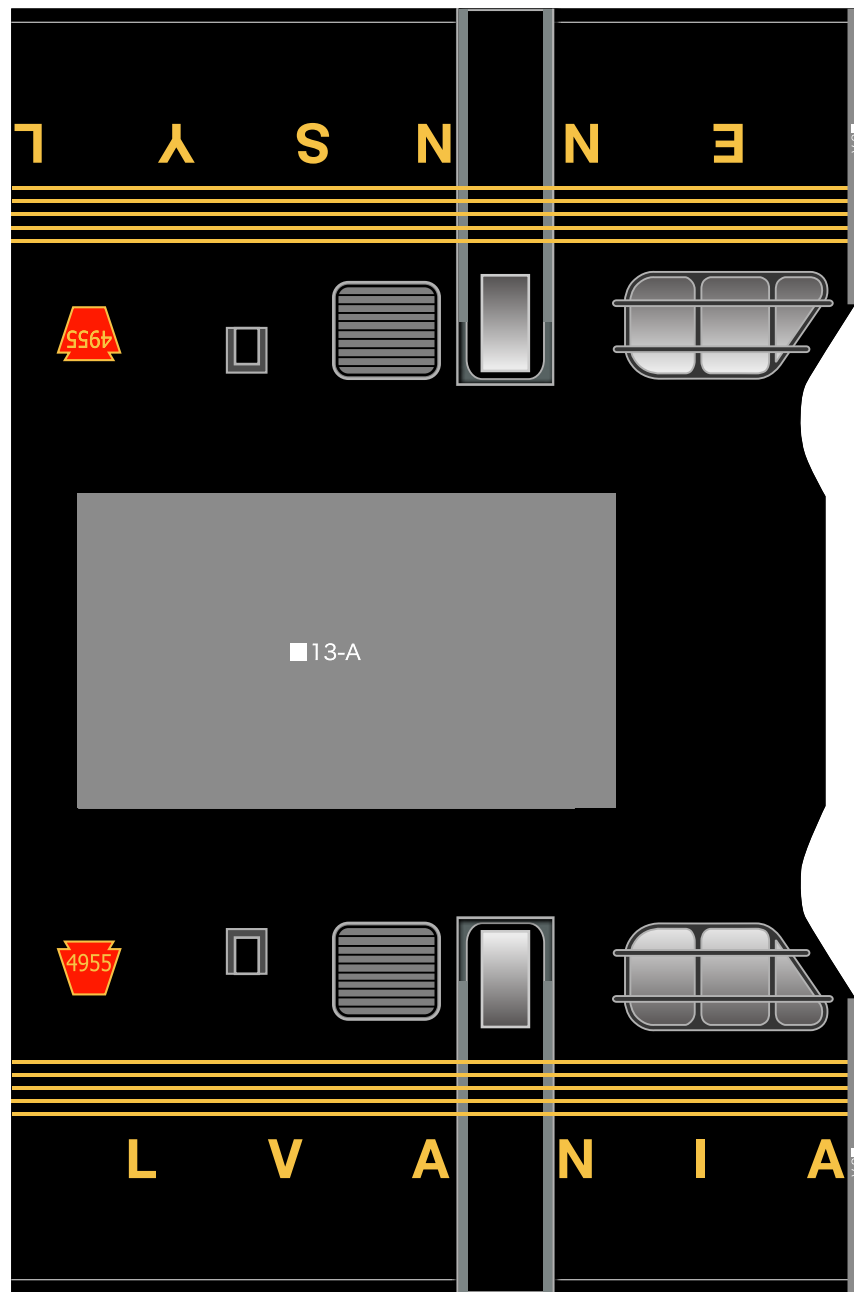




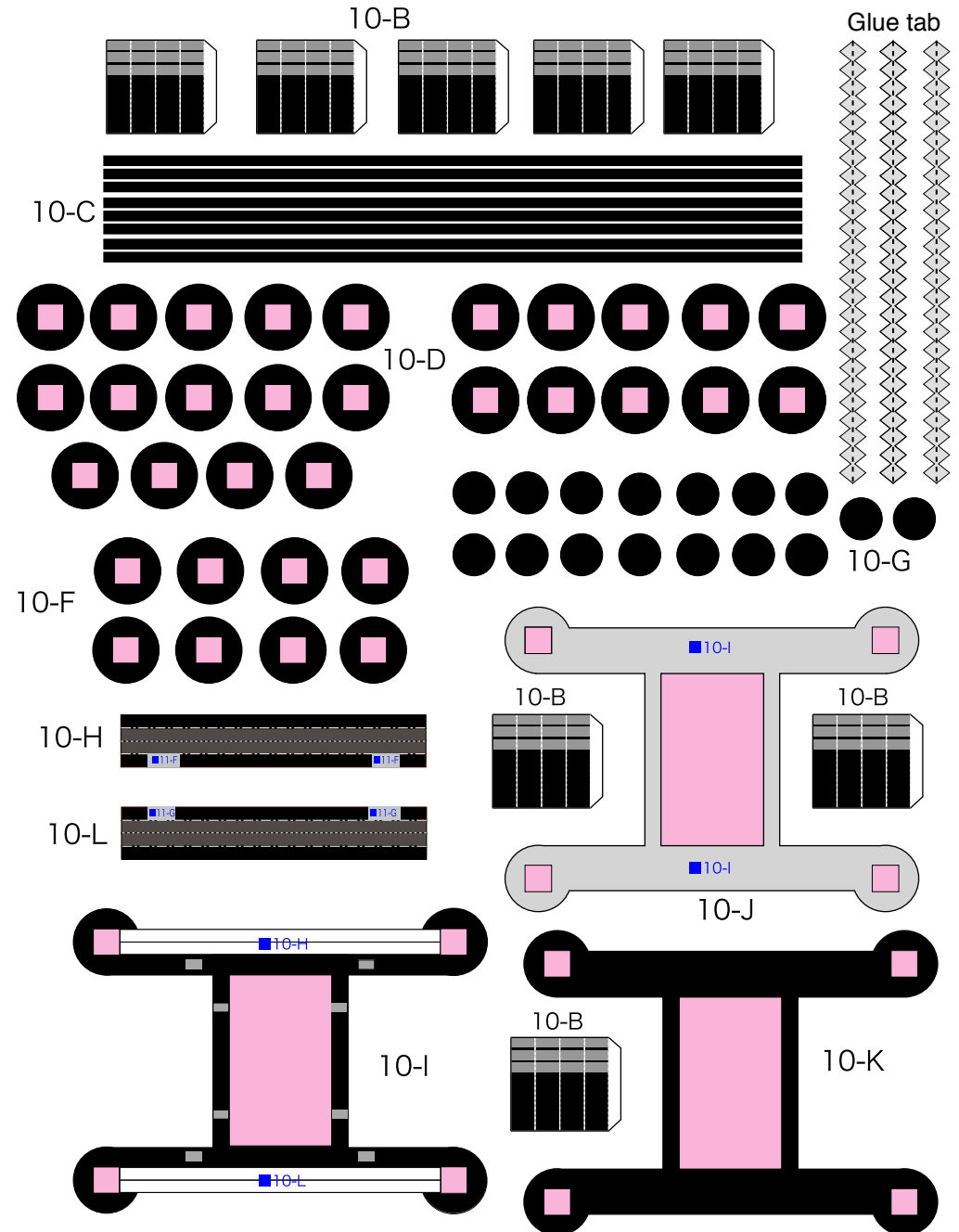


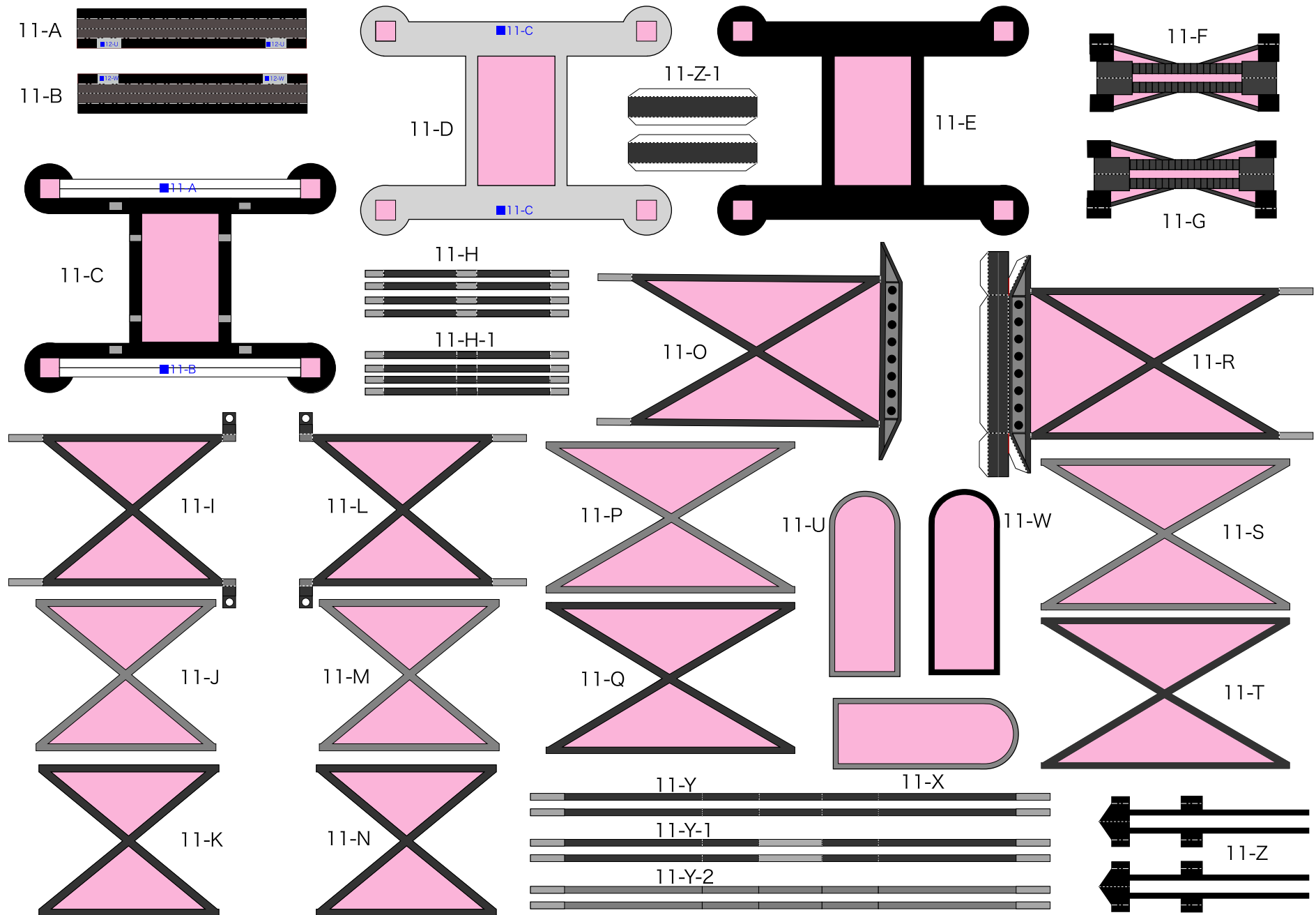


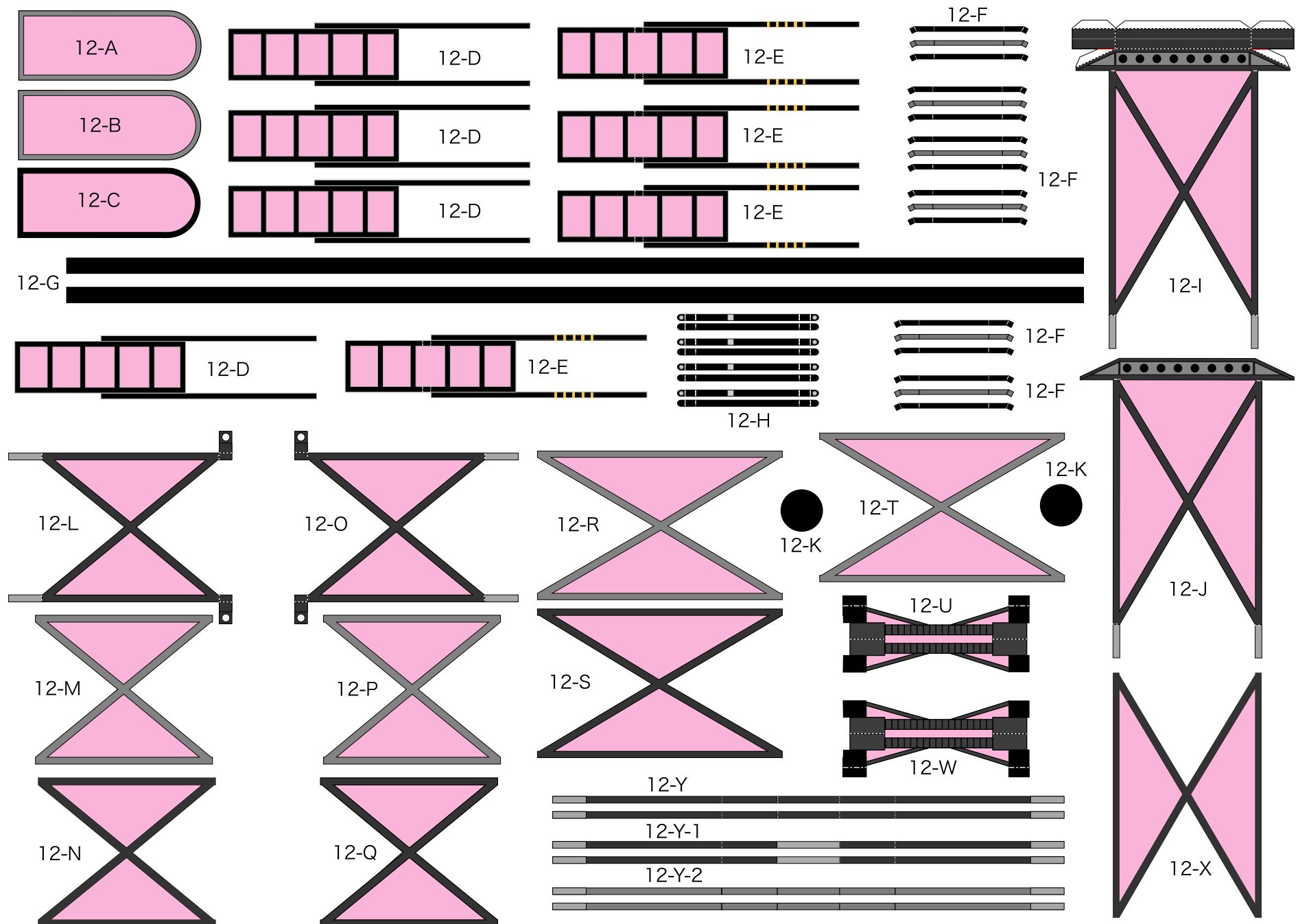




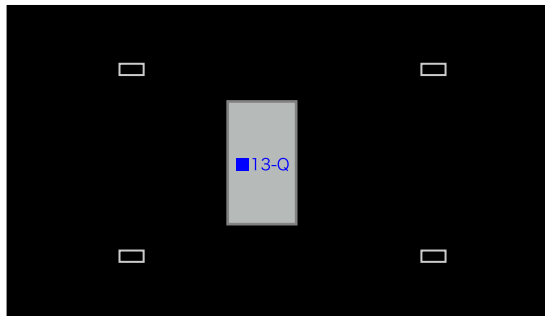
10-A



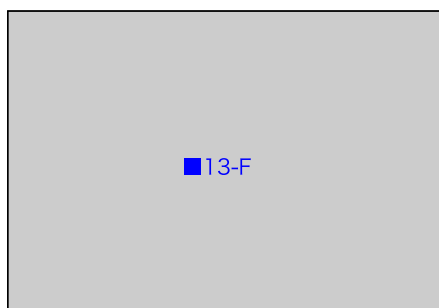




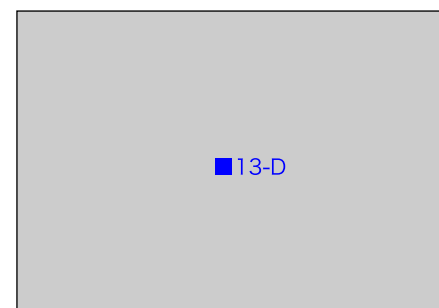
13-A



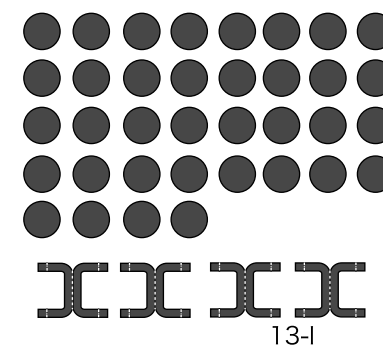
13-D



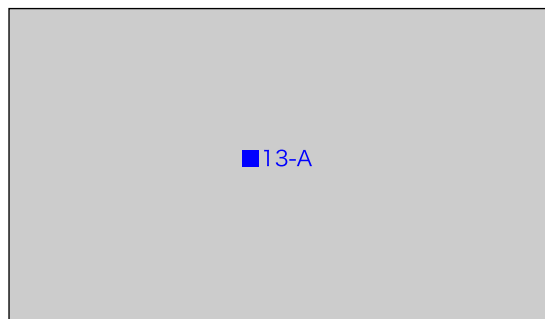
13-E



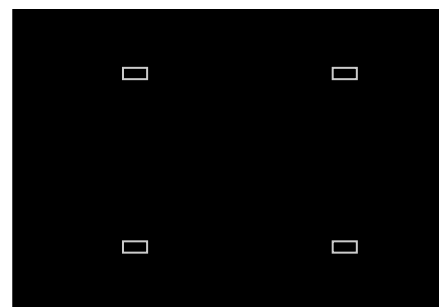
13-G



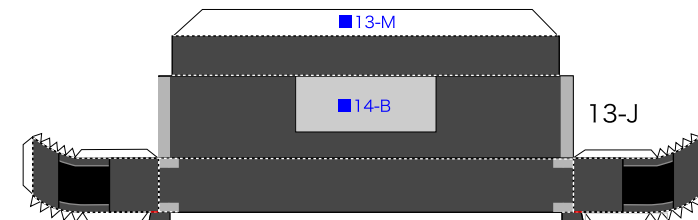
13-B



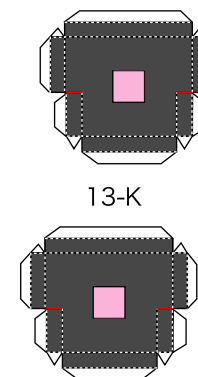
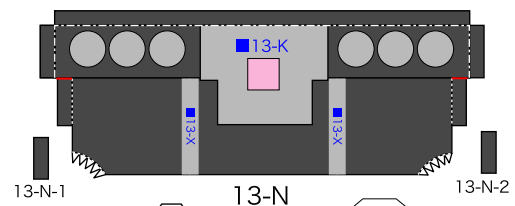
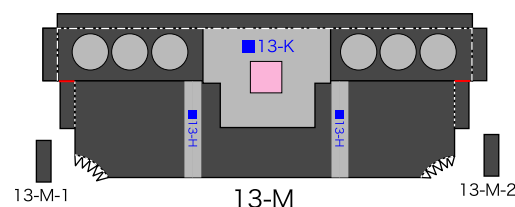
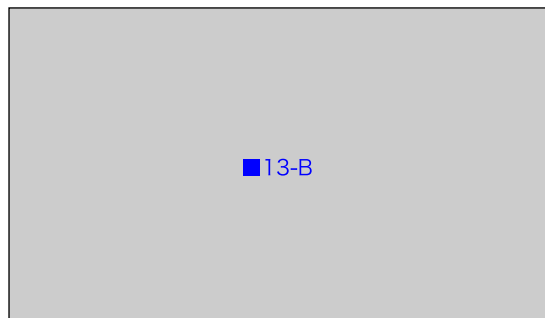
13-F



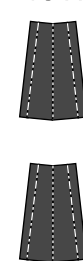
13-H



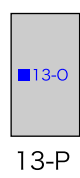
13-C



13-X



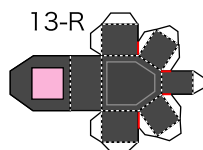
13-O



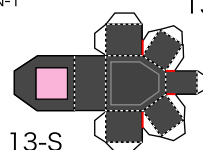
13-P



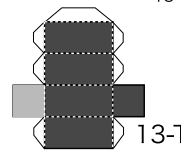
13-Q



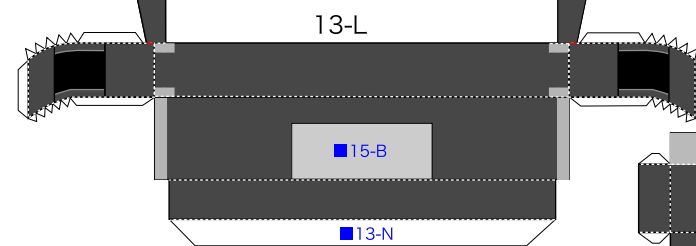
13-R



13-S



13-T



13-U

