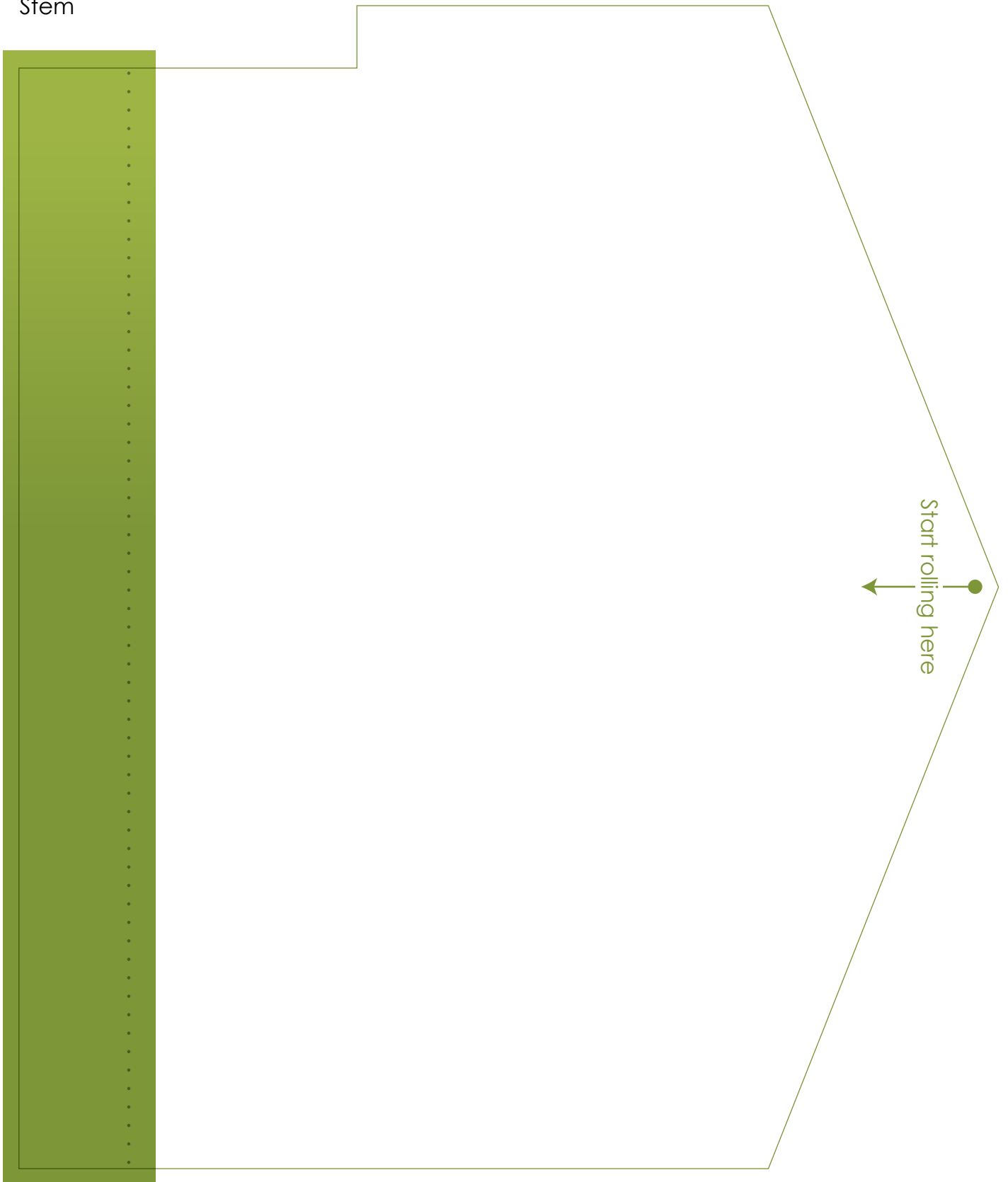


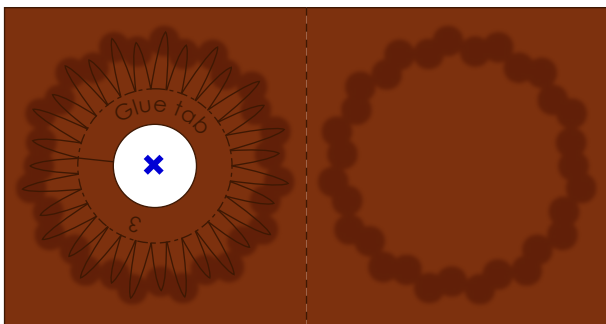
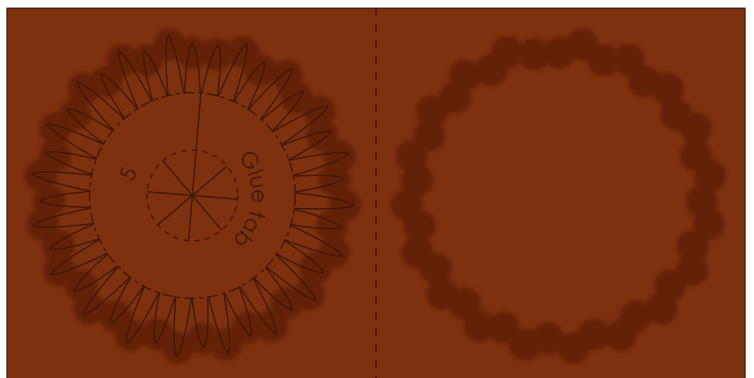
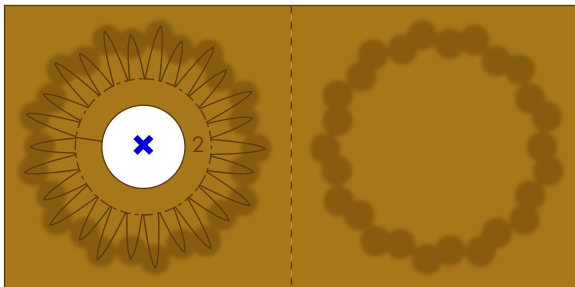
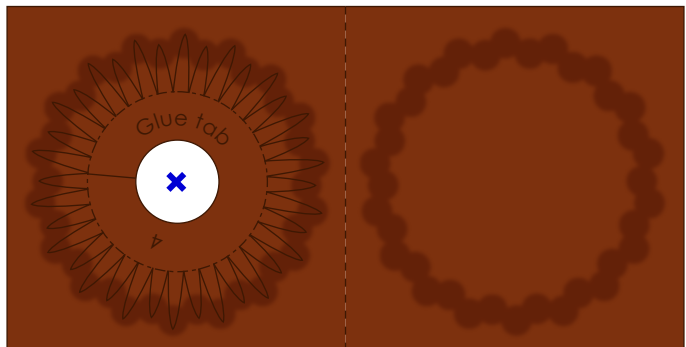
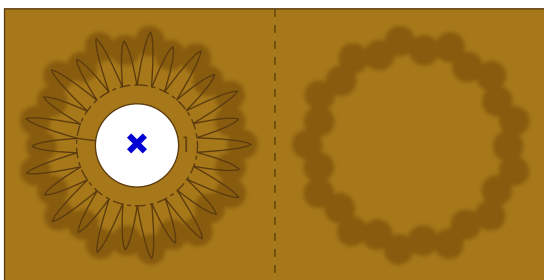
Stem



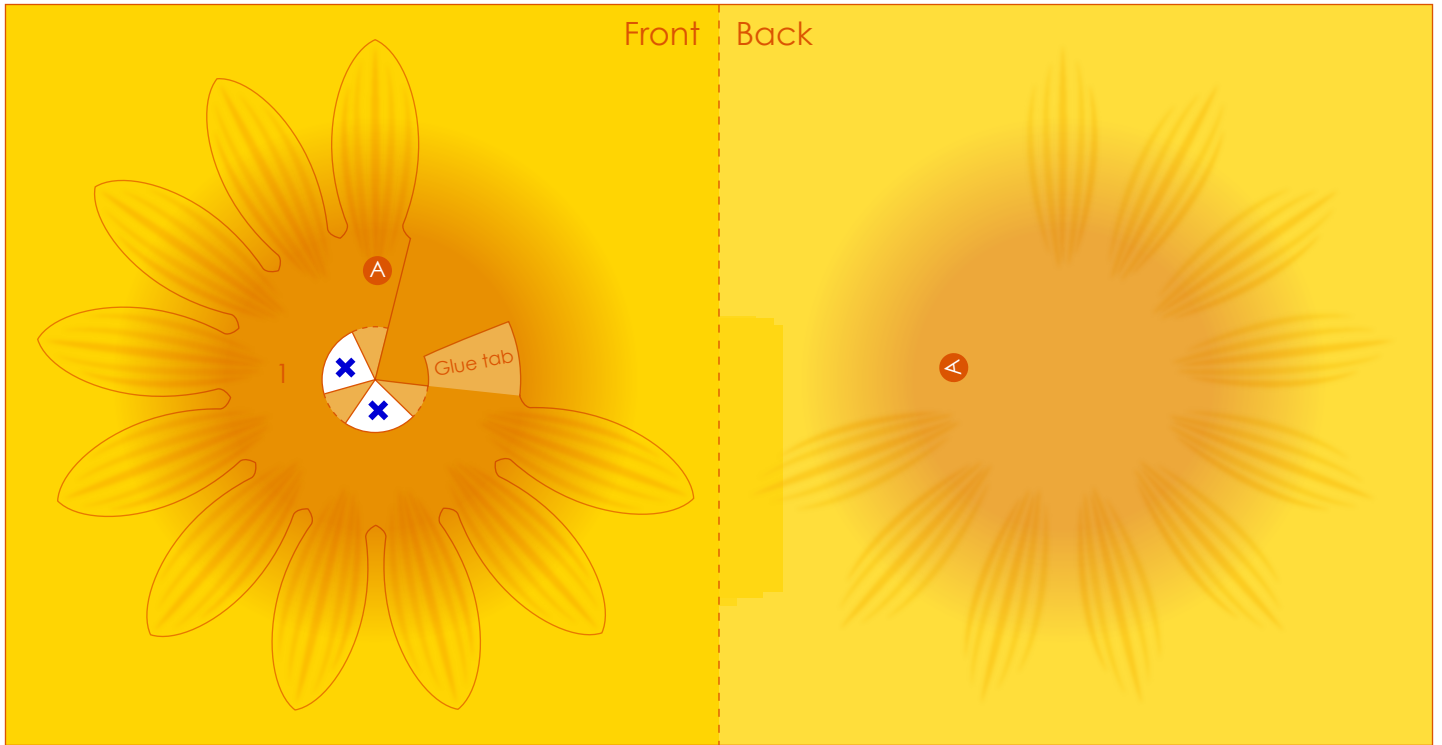
Central part



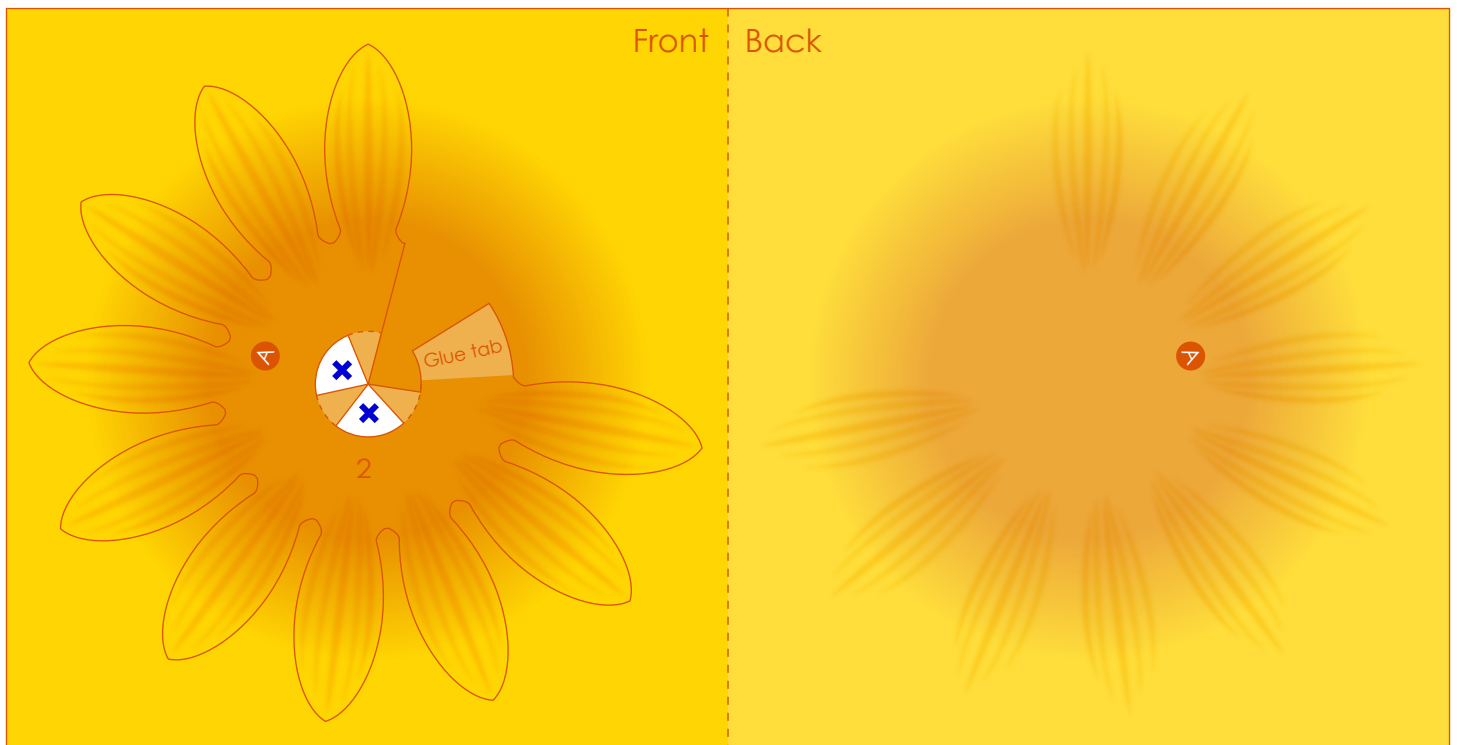
Stamens and Pistils <Tubular flower>



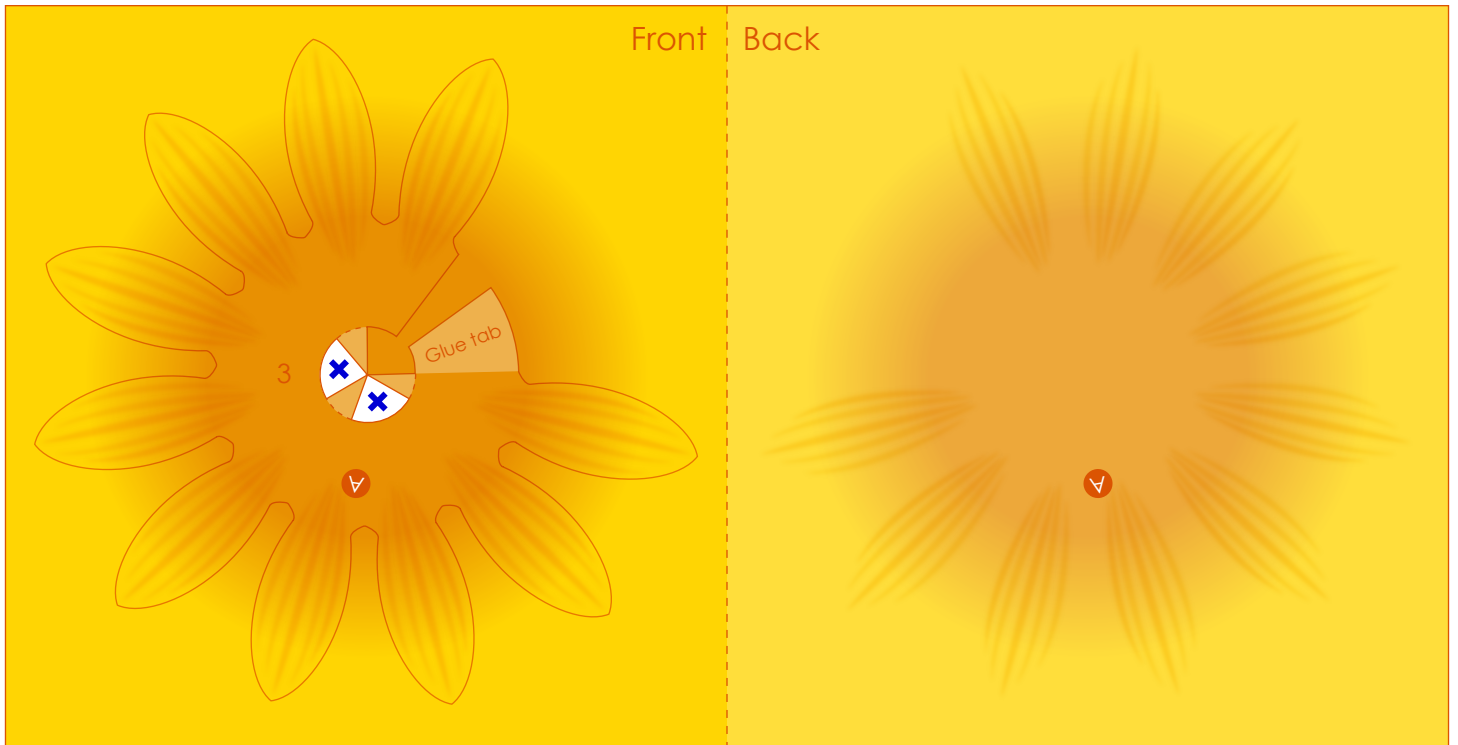
Petals 1 <Ligulate flower>



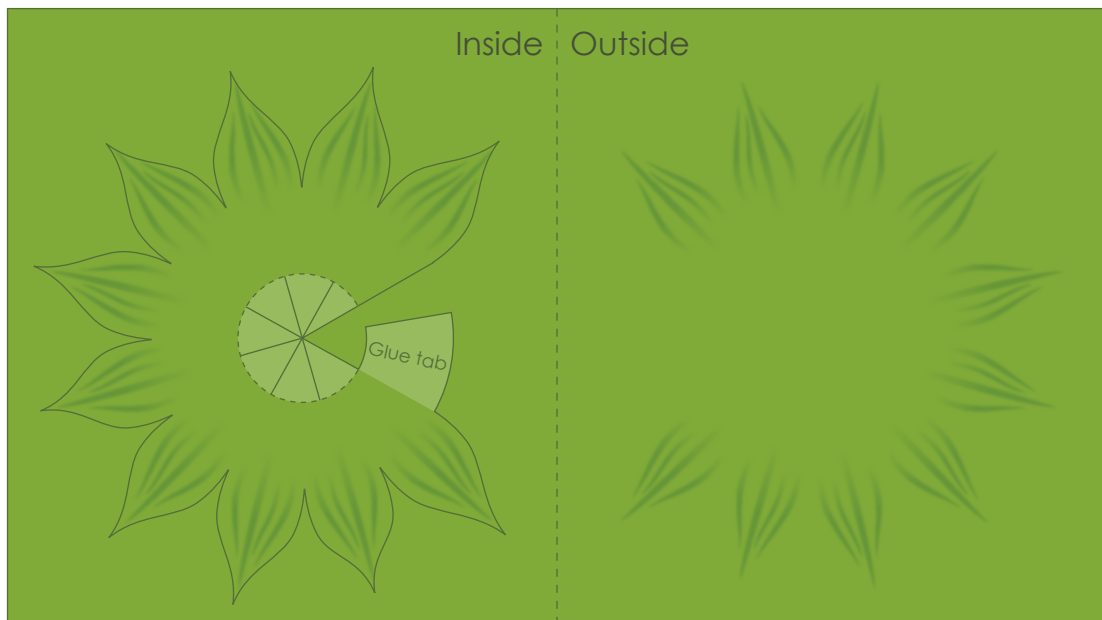
Petals 2 <Ligulate flower>



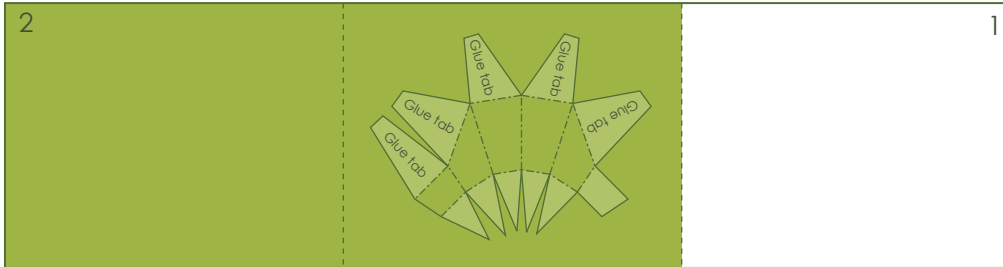
Petals 3 <Ligulate flower>



Calyx 1 <Bract>

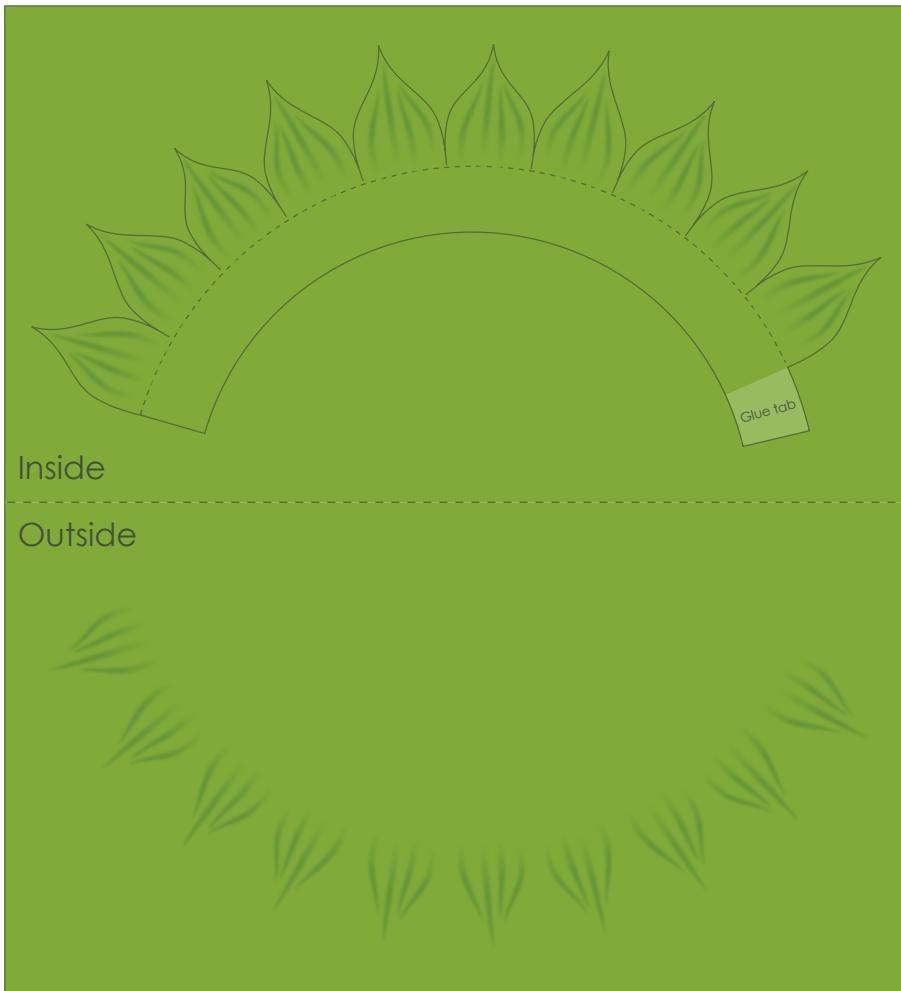


Calyx core

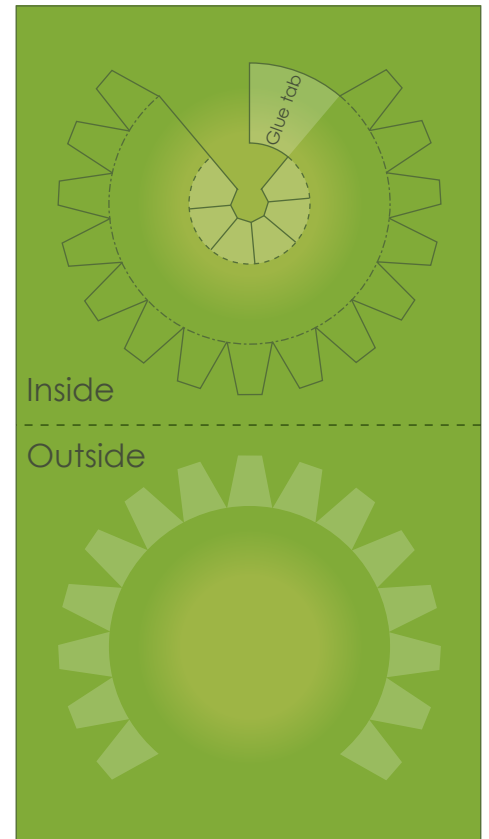


Fold 1, and fold 2

Calyx 2 (top) <Bract>

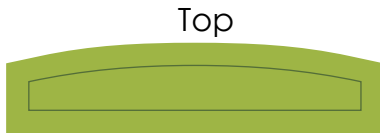


Calyx 2 (bottom) <Bract>



Leaves

Finishing tape 1



Finishing tape 2

Start rolling here

