

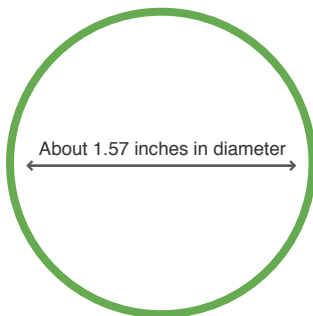
Assembly Instructions

1. Carefully cut out the parts.
2. Fold along the dotted lines, making mountain or valley folds as indicated.
3. Attach the glue spots on each part together.
4. Glue the parts together, and you're done!

\*Please read the Assembly Instructions carefully before you begin.

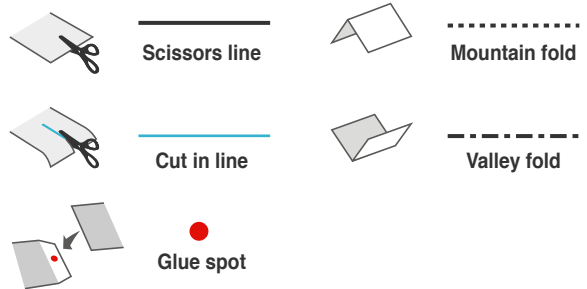
Tools

- Scissors
- Glue (We recommend quick-drying paper glue)
- 3 rubber bands (preferably brand new ones)



Actual size illustration:  
check the size of your rubber bands here.

Notation Key



How to assemble your model neatly

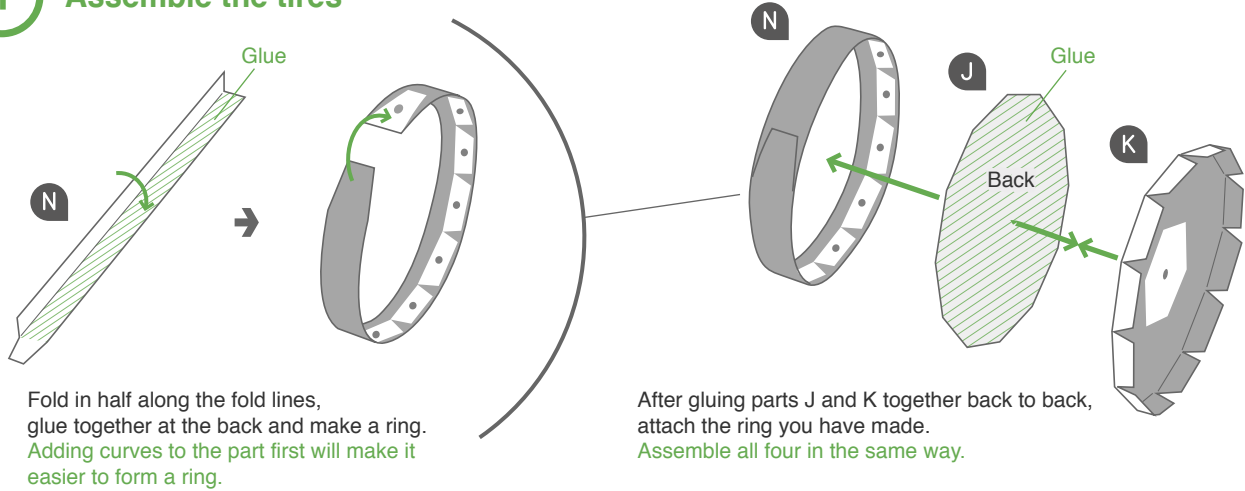
Scoring along the fold lines in advance with a dried up pen or a ruler with slightly sharp corners will result in a neater model.

\*Be careful not to press too hard as the paper may tear.

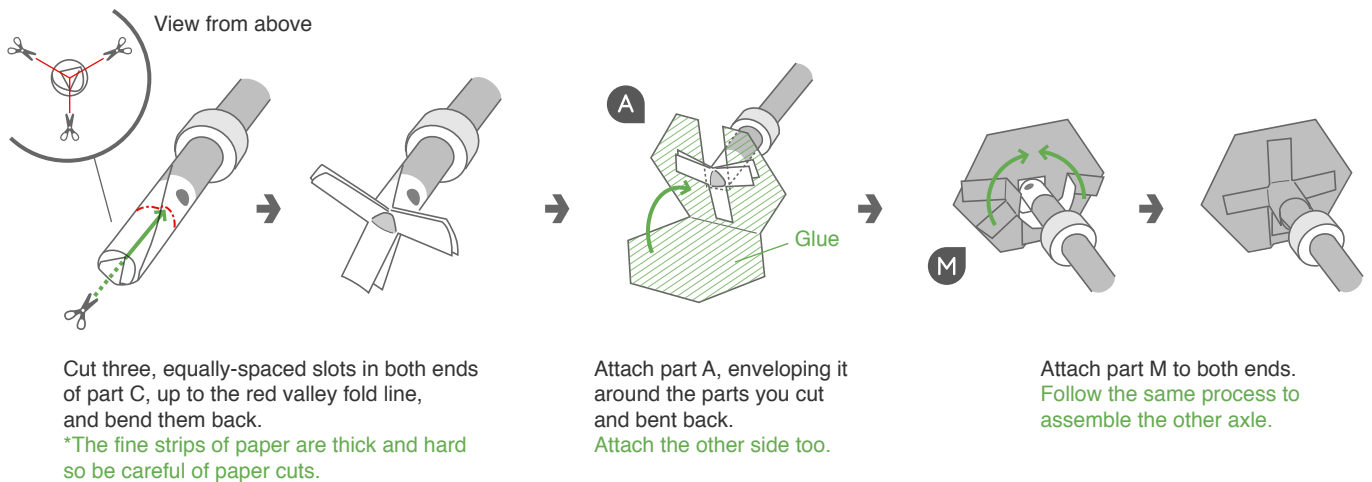
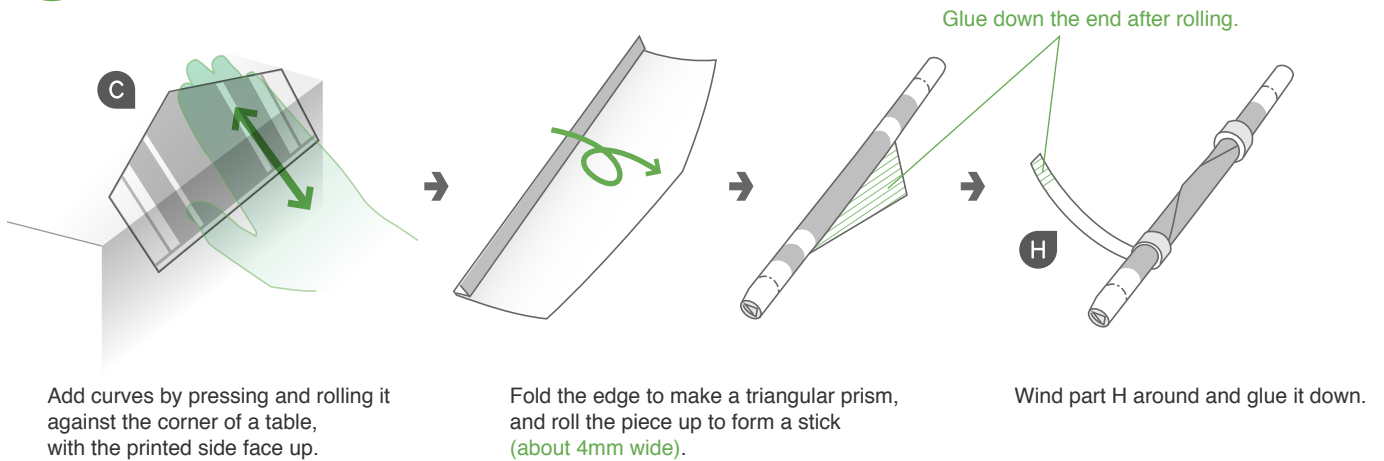
Caution

Keep scissors and glue away from small children.  
Be careful not to cut your fingers when using scissors.

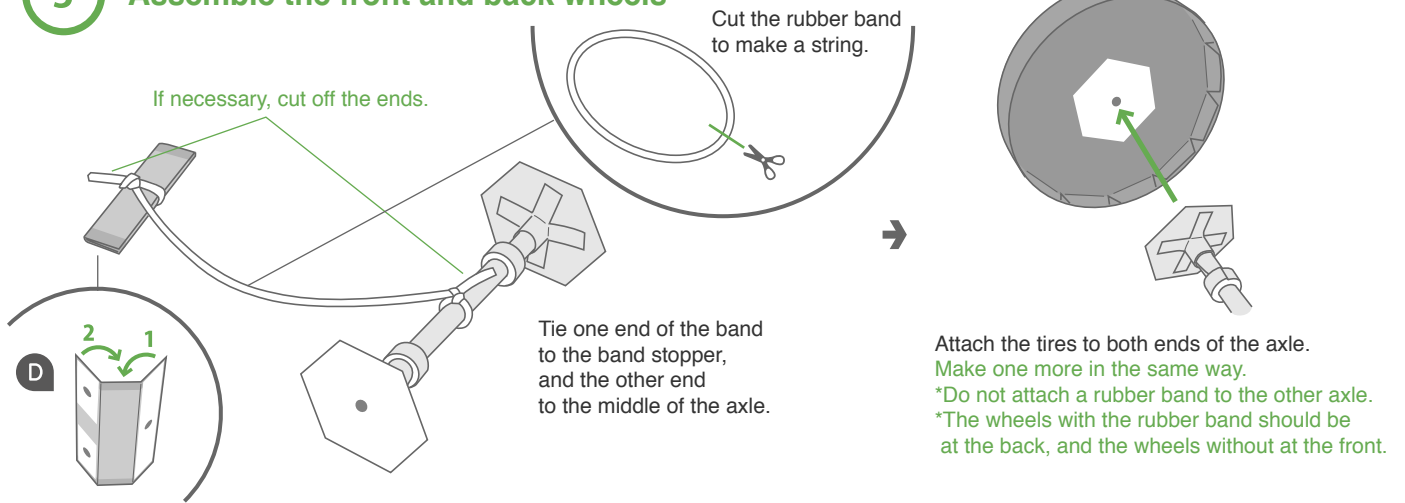
1 Assemble the tires



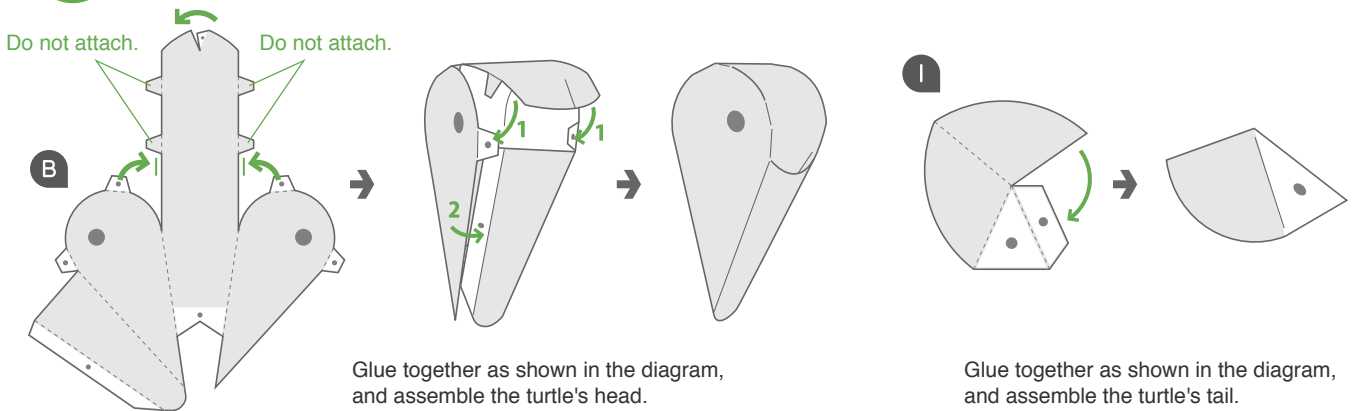
2 Assemble the axle



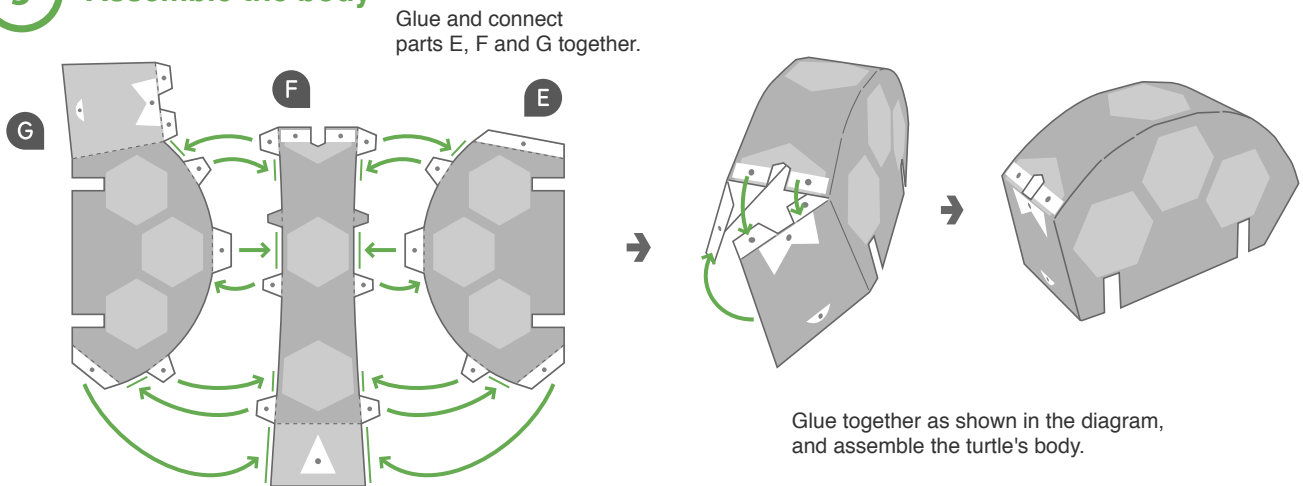
**3 Assemble the front and back wheels**



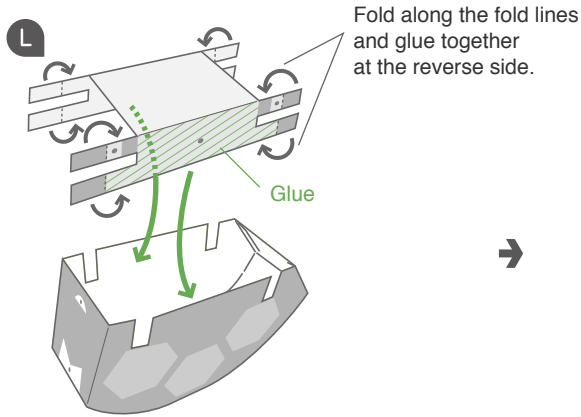
**4 Assemble the head and tail**



**5 Assemble the body**

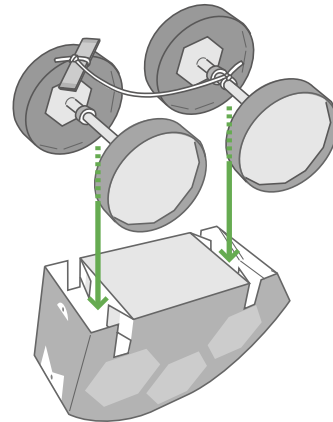


6 Attach the wheels

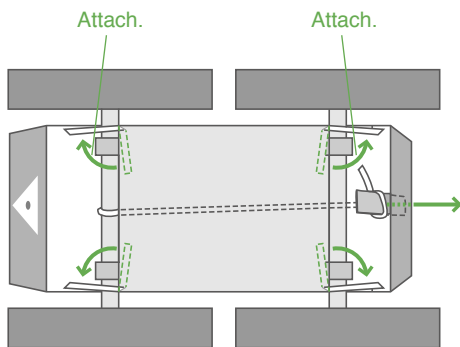


After turning the turtle's body over, glue the tummy to it.

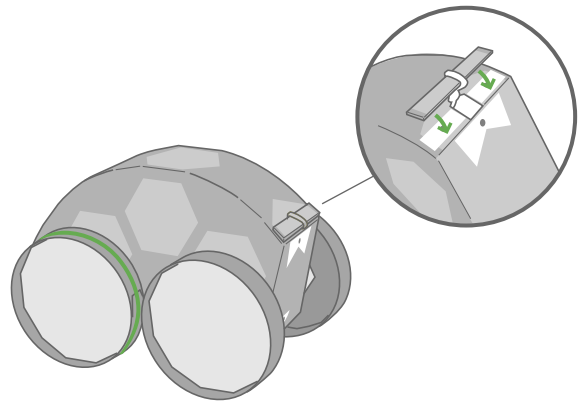
Fold along the fold lines and glue together at the reverse side.



Being careful not to mix up the front and back wheels, put the axles into the grooves on the body. Check that the wheels spin smoothly.

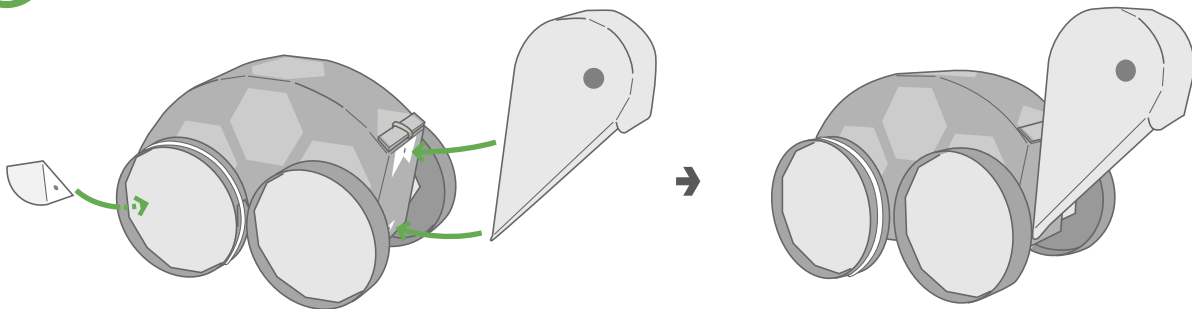


Feed the band stopper through the hole at the front of the body to the outside. Be careful that the band doesn't come undone.



When you have got the band stopper out, glue it in place as shown in the diagram, and wind the wheel band around the back wheels (the tires furthest from the band stopper).

7 Assemble together

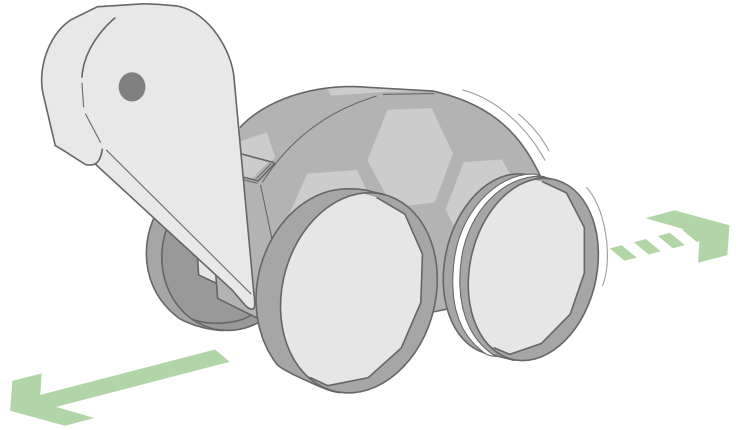


Attach the turtle's head and tail to the completed body, and you're done!

## How to play

Pull the car backwards along the ground, gently pushing down on the back wheels. Point the car in the direction you want it to run, let it go and watch it take off!

Be careful not to wind the band too tightly as it may snap or come untied. Play with it on a flat surface such as a table or the floor (wooden floorboards work better than carpet).



### If your car doesn't run well, check the following points to repair it.

- |   |  |
|---|--|
| <input type="checkbox"/> Are the axles or tires stuck against the body? | <input type="checkbox"/> Are the wheels or tires bent?           |
| <input type="checkbox"/> Has the band lost its elasticity?              | <input type="checkbox"/> Is the band wound up too tightly?       |
| <input type="checkbox"/> Has the band come loose from the tire?         | <input type="checkbox"/> Is the band tangled up around the axle? |