

Chemical Fire Engine Pattern

CREATIVE PARK

<http://www.canon.com/c-park/>

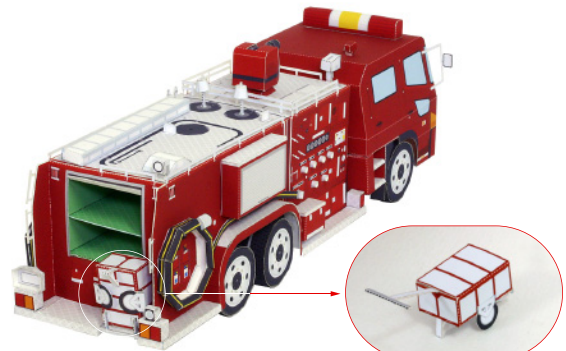


Special Vehicle Series
Chemical Fire Engine
FOAM TENDER



View of completed model

* This model was designed for Papercraft and may differ from the original in some respects.



Collapsible hose car

FOAM TENDER

1/43 scale

Supervision: **Nihon Kikai Kogyo Co., Ltd.**

Chemical fire engines are primarily used for fighting liquid fuel or chemical fires at oil refineries or airports, where water would fan the flames. A chemical fire engine can spray fire-extinguishing foam or dry chemical powder, which extinguish the fire by smothering. The vehicles are often equipped with a water tank and a separate tank for the fire extinguishing chemicals. In addition to fire stations, these specialized fire trucks are often on standby to enable rapid response at chemical plants and other potential hazardous sites.

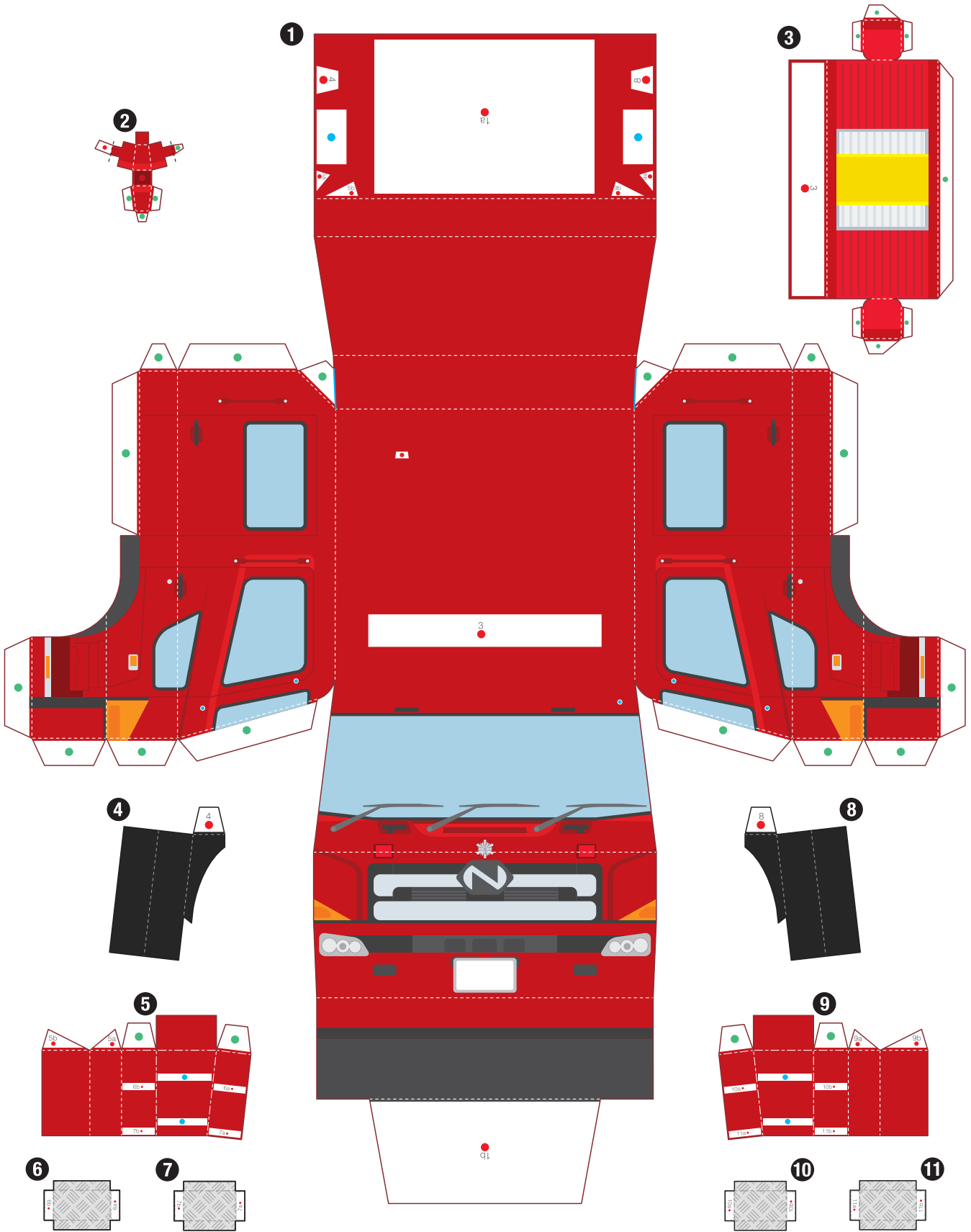
The foam tender is a specialized chemical fire engine equipped with a water cannon that can be maneuvered via an electronic remote control and a hose car to provide access to tight areas, making it a highly flexible fire-fighting unit.

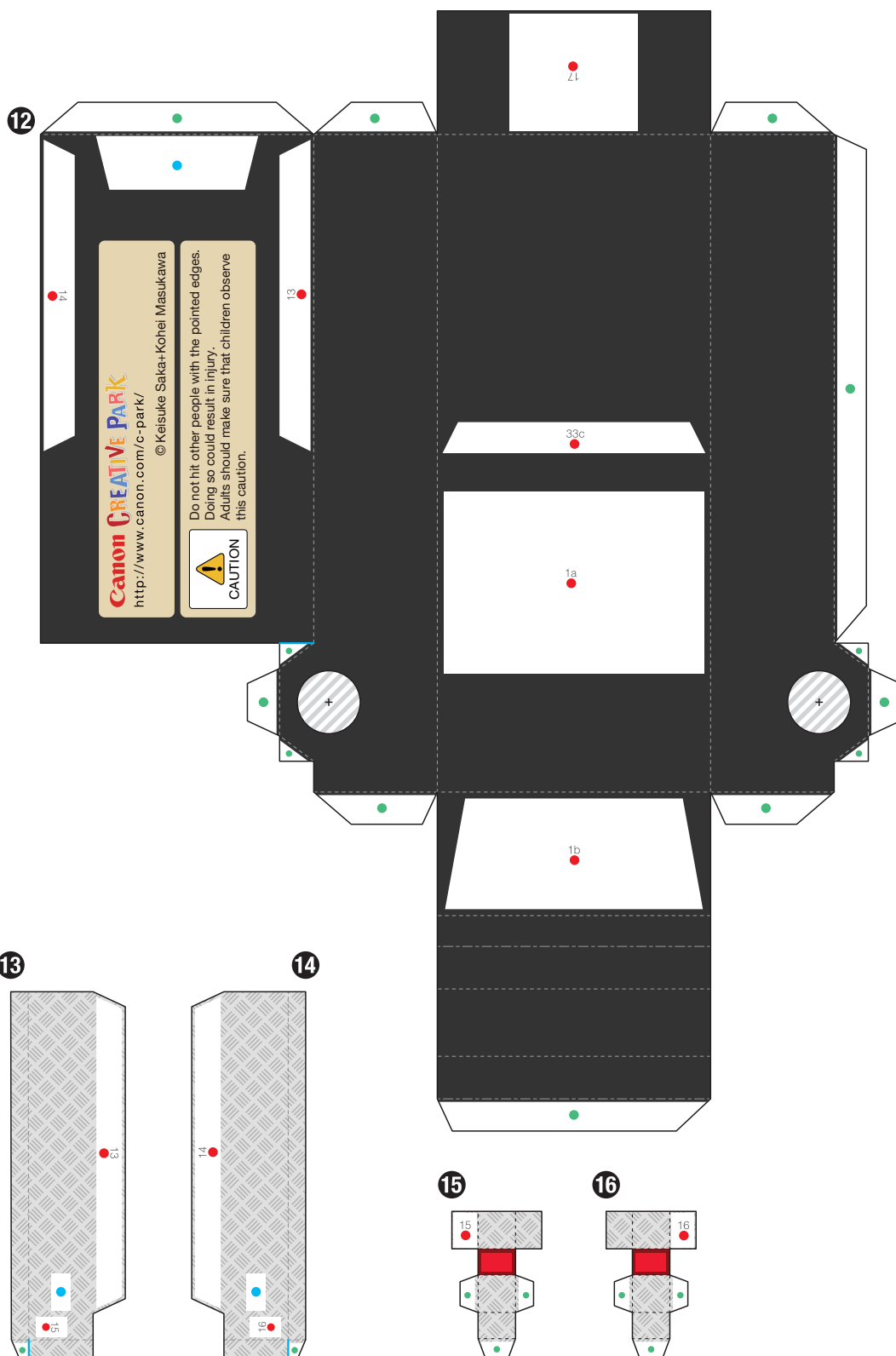
Overall length:	9430mm
Overall width:	2490mm
Overall height:	3350mm

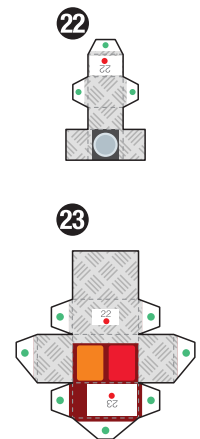
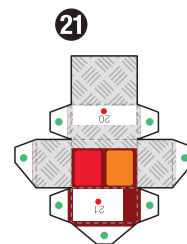
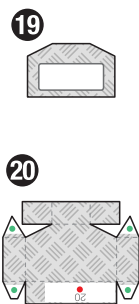
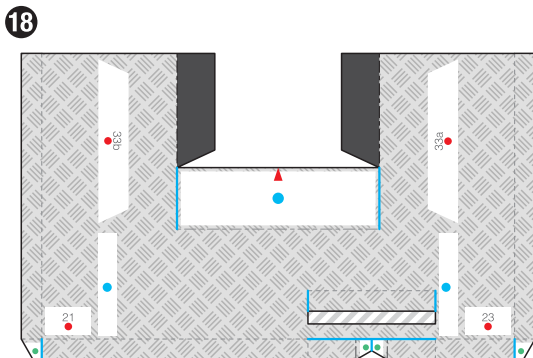
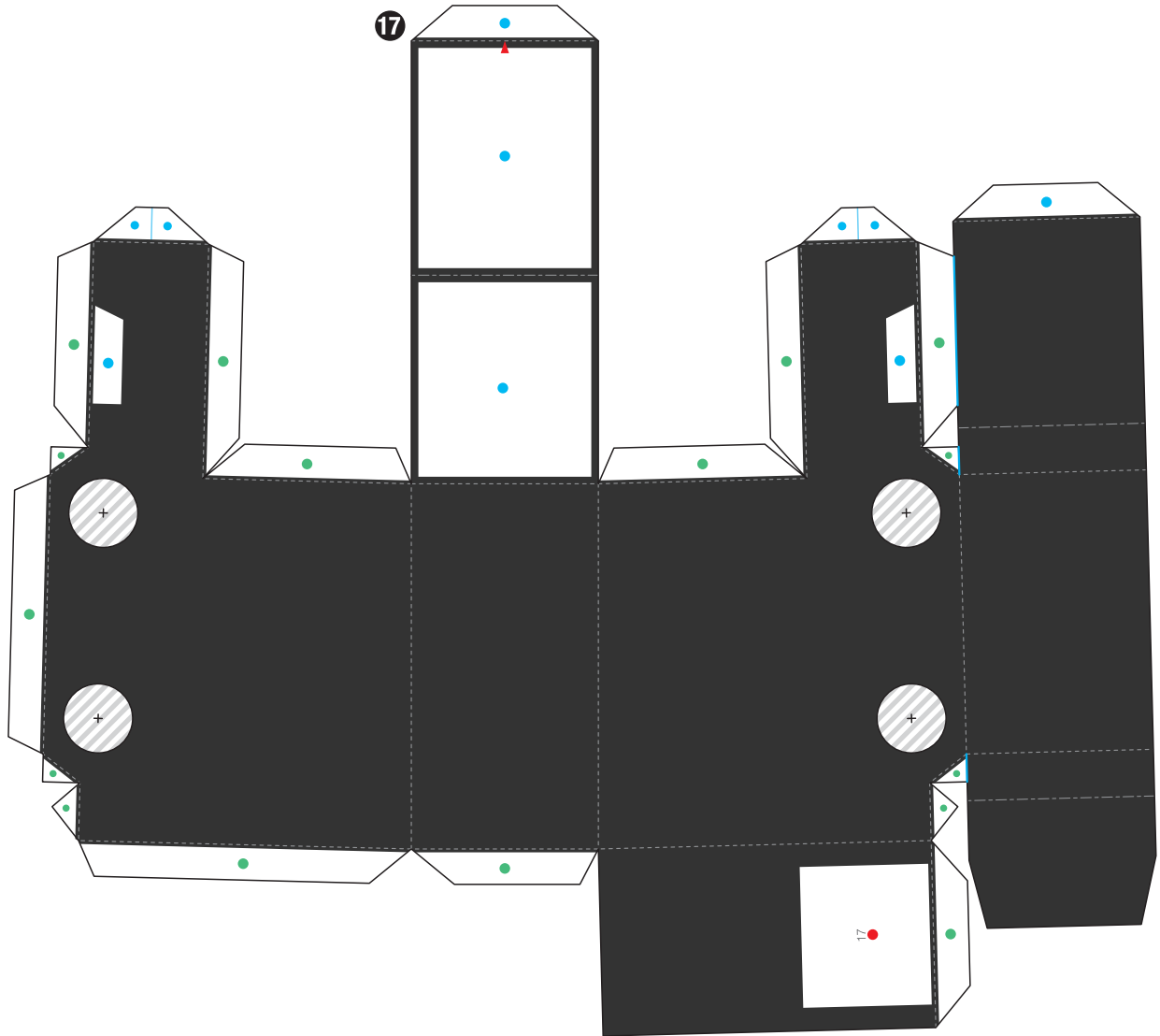
■ Parts list (pattern) : Ten A4 sheets (No. 1 to No. 10)

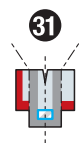
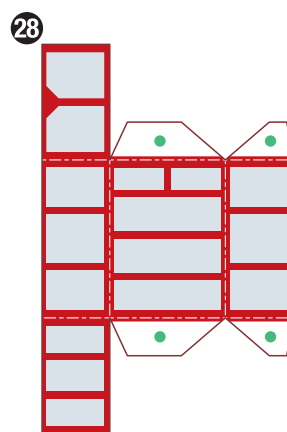
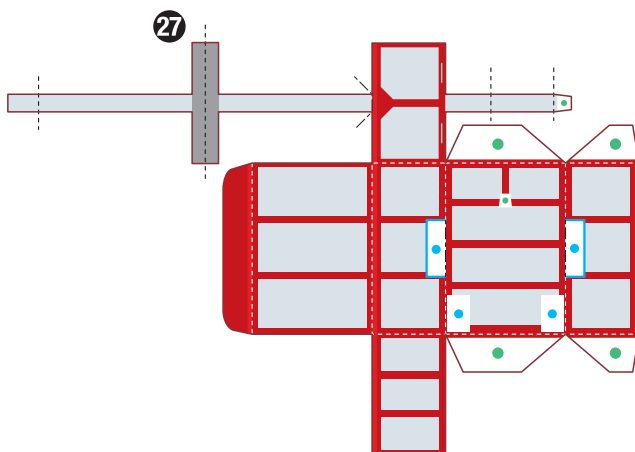
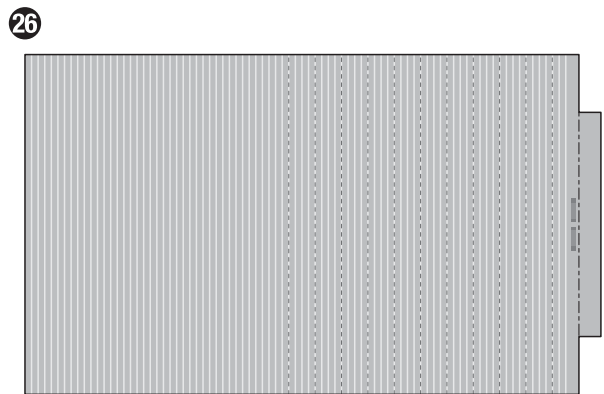
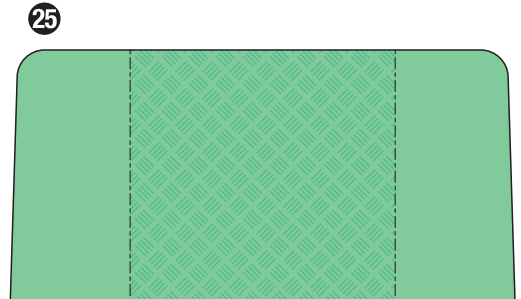
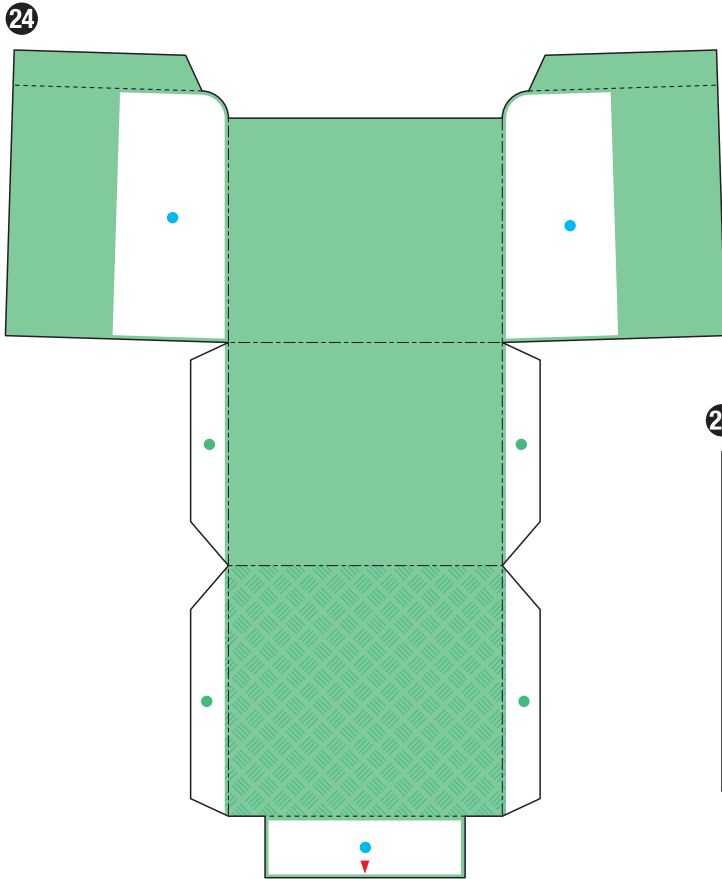
■ No. of Parts: 118

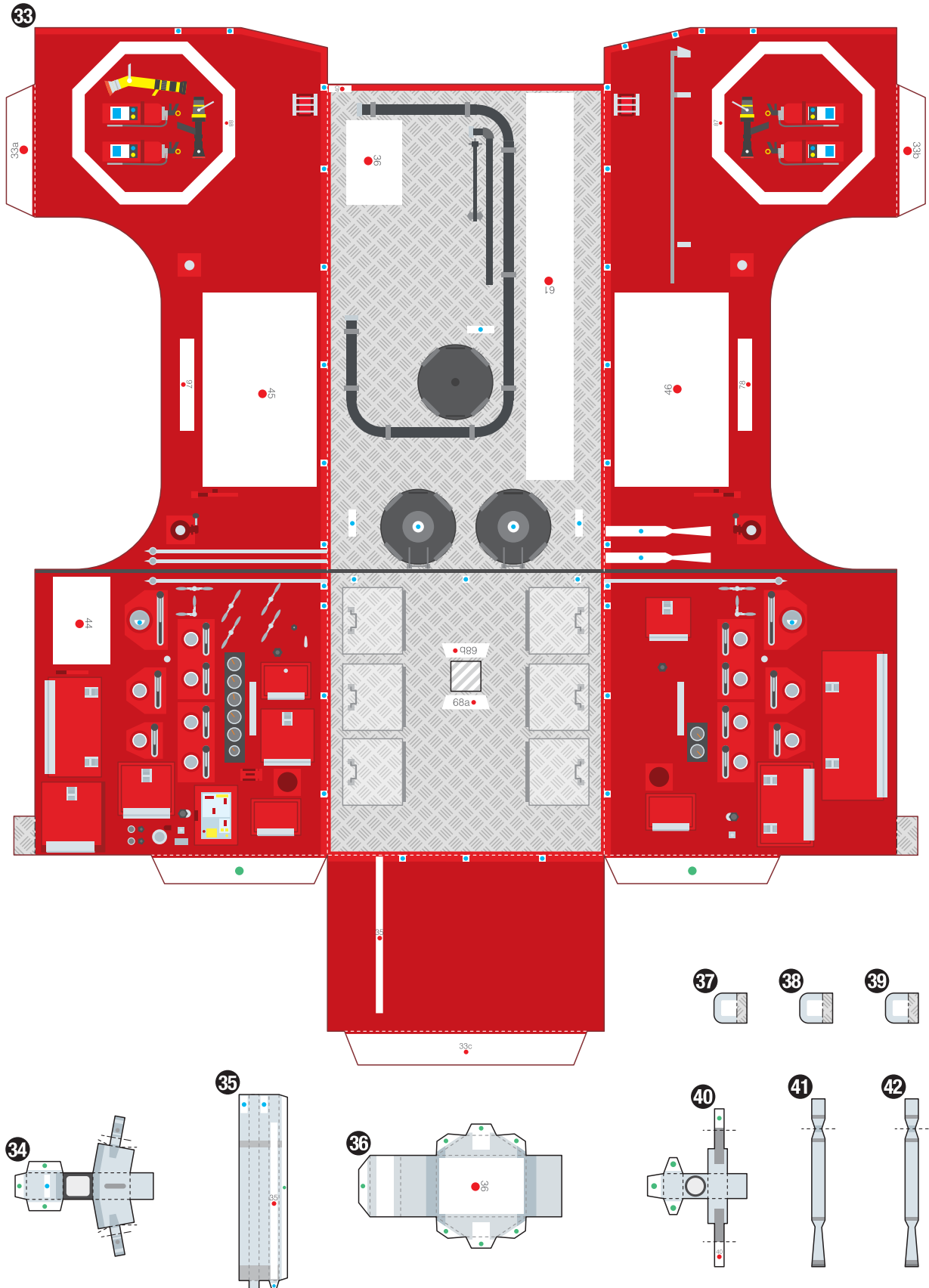
Build this model with careful reference to the Assembly Instructions.

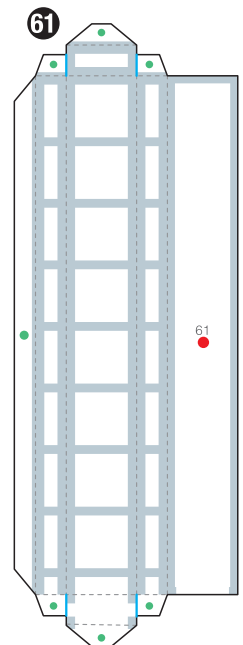
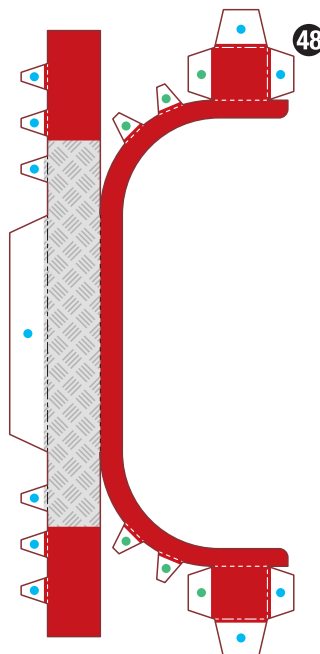
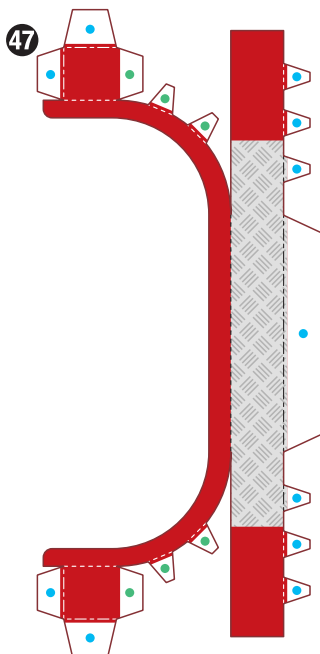
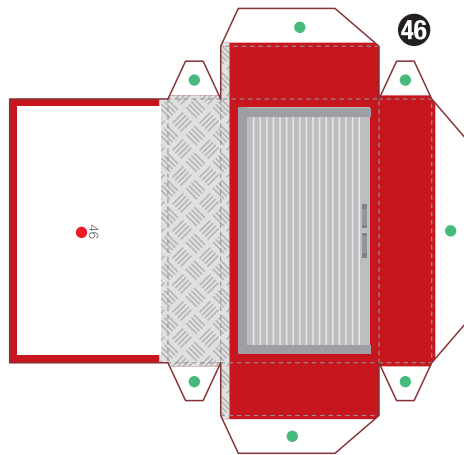
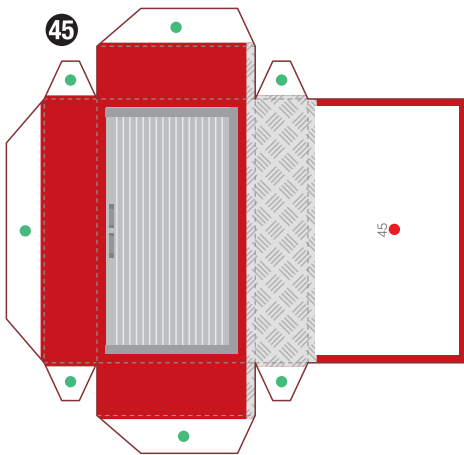
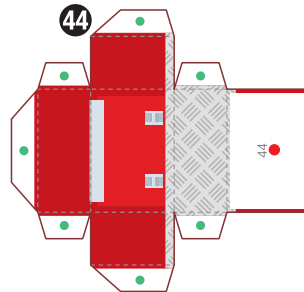
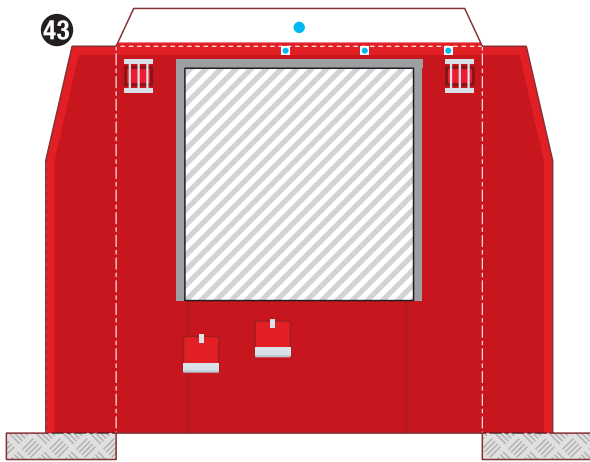












- 49
- 50
- 51
- 52
- 53
- 54
- 55
- 56
- 57
- 58
- 59
- 60

