

Completed Photo



Tools and Materials

Scissors, glue (liquid glue, craft glue, etc), ruler, a used ball-point pen



How to make



Handy Hints



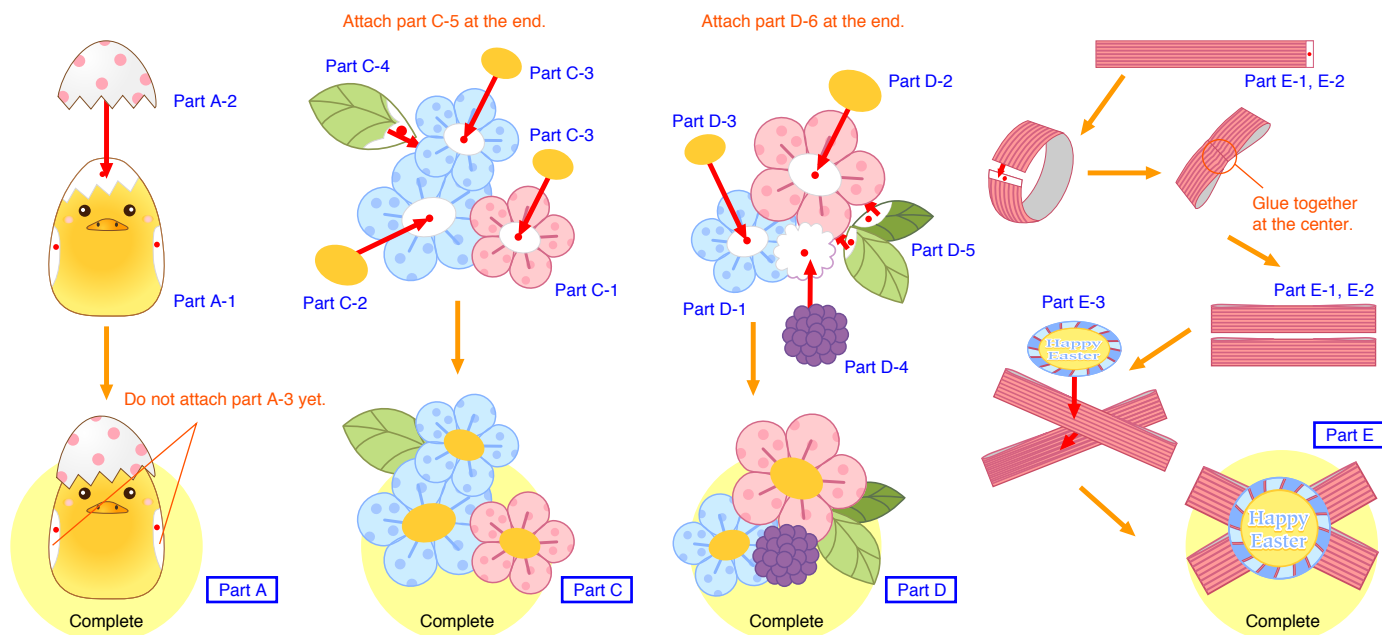
Hold a ruler up to the mountain and valley fold lines and use a dried-up pen to score along the lines. This will make for an easier, neater fold. (Be careful not to press too hard as this may scrape away the ink.)

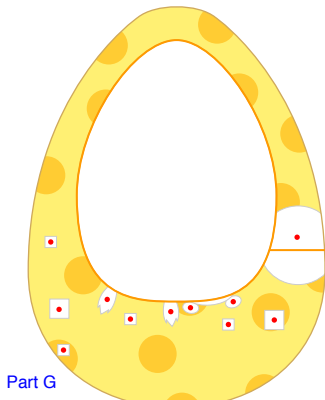
Caution



This paper craft involves using glue, scissors, and other utensils and materials (small parts, etc) that may be dangerous to young children. Please work somewhere out of reach of young children.

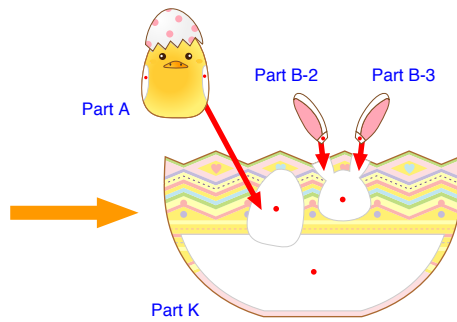
How to assemble the parts



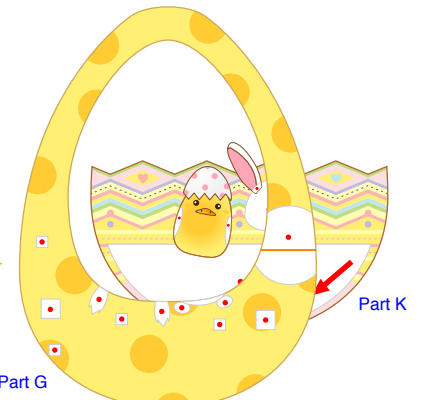


Part G

Cut out part G along the lines, and cut out the center. Do the same for parts H, I and J.

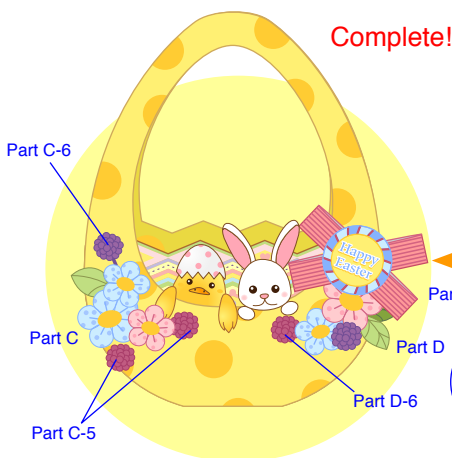


Attach part A, B-2 and B-3 to part K.



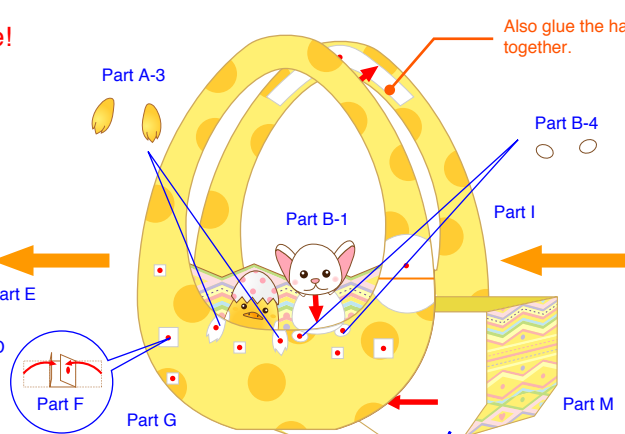
Part G

Attach part K to part G. Do the same for parts I and L.



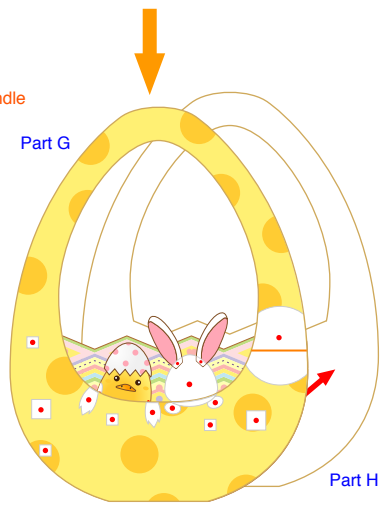
Complete!

Finally, attach the decoration parts, and you're done!



Insert part M between part G and part I, and glue them together. Attach parts A-3, B-1 and B-4. Also attach part F.

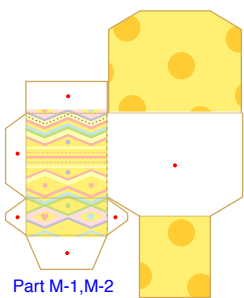
Also glue the handle together.



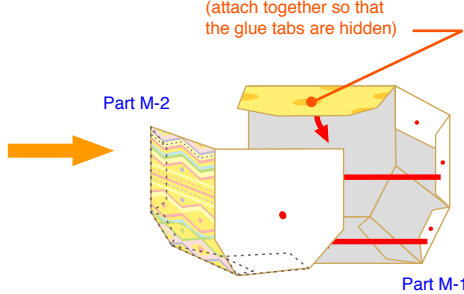
Part G

Attach parts G and H together by gluing at their reverse sides. Do the same for parts I and J.

How to assemble the box

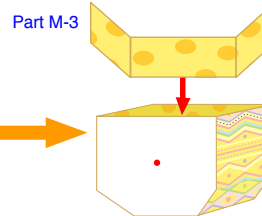


Part M-1, M-2

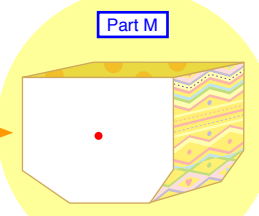


Part M-1

Glue last (attach together so that the glue tabs are hidden)



Part M-3



Complete

Part A



Part A-1



Part A-2



Part A-3

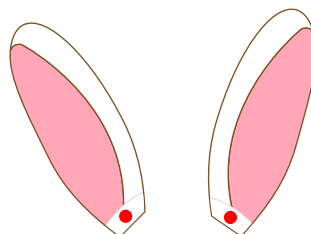
Part B



Part B-1



Part B-4



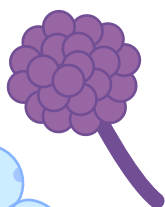
Part B-2

Part B-3

Part C

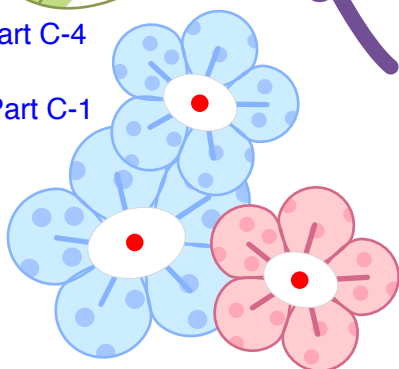


Part C-4



Part C-6

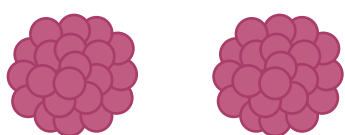
Part C-1



Part C-3



Part C-2



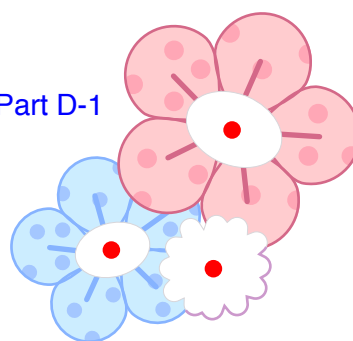
Part C-5

Part D

Part D-2



Part D-1



Part D-3



Part D-5



Part D-4



Part D-6

Part E



Part E-1



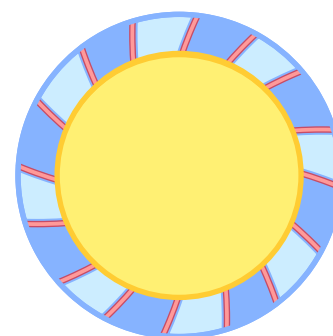
Part E-2



Part E-3

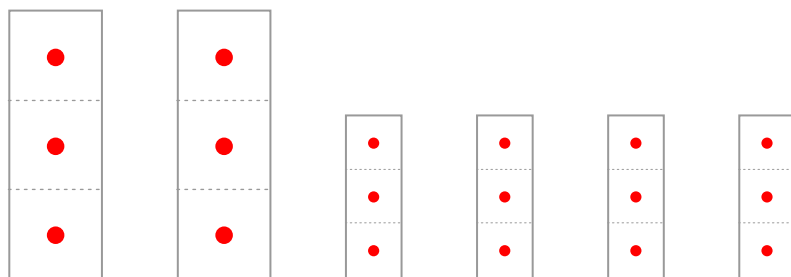


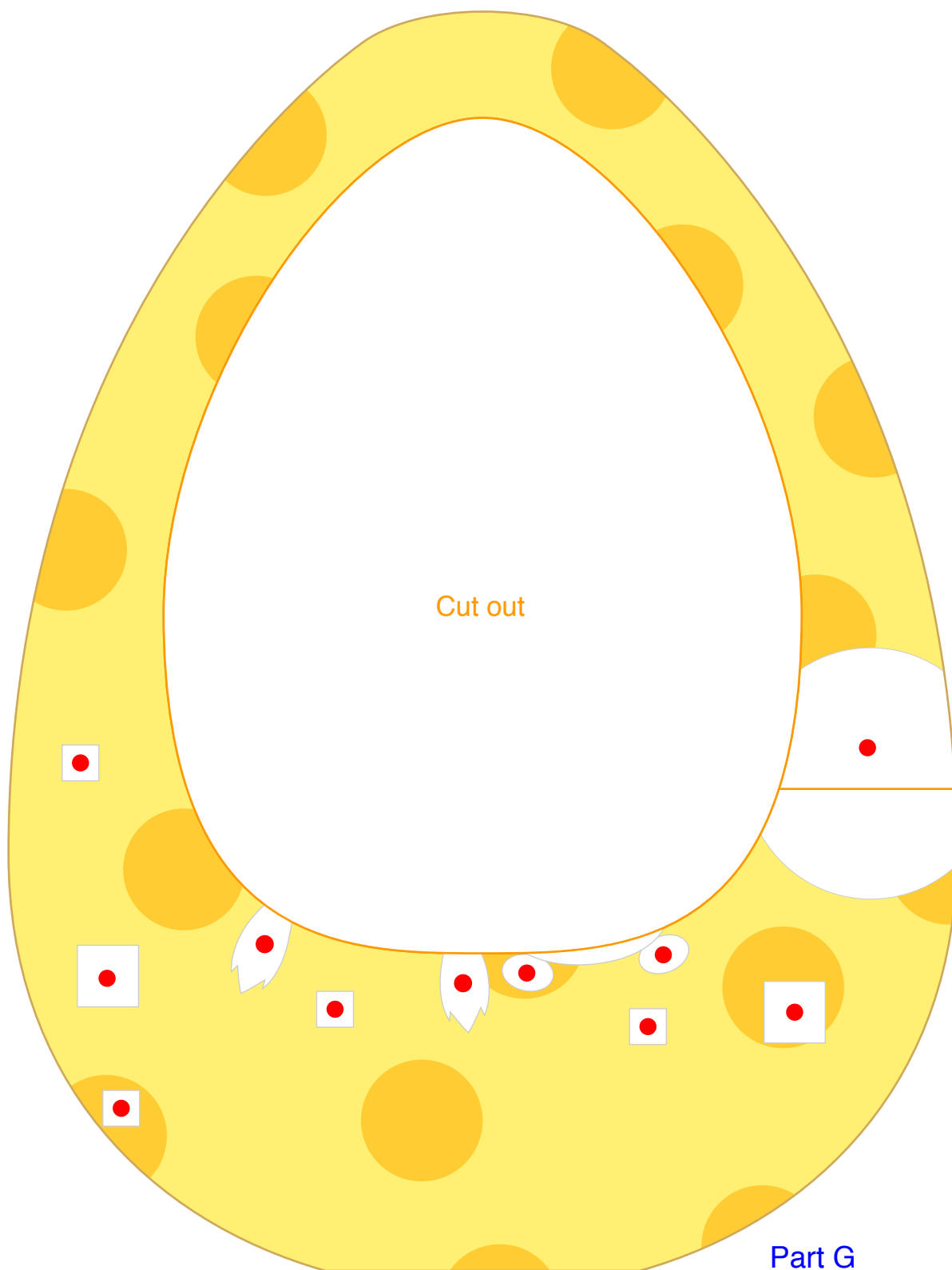
Part E-3

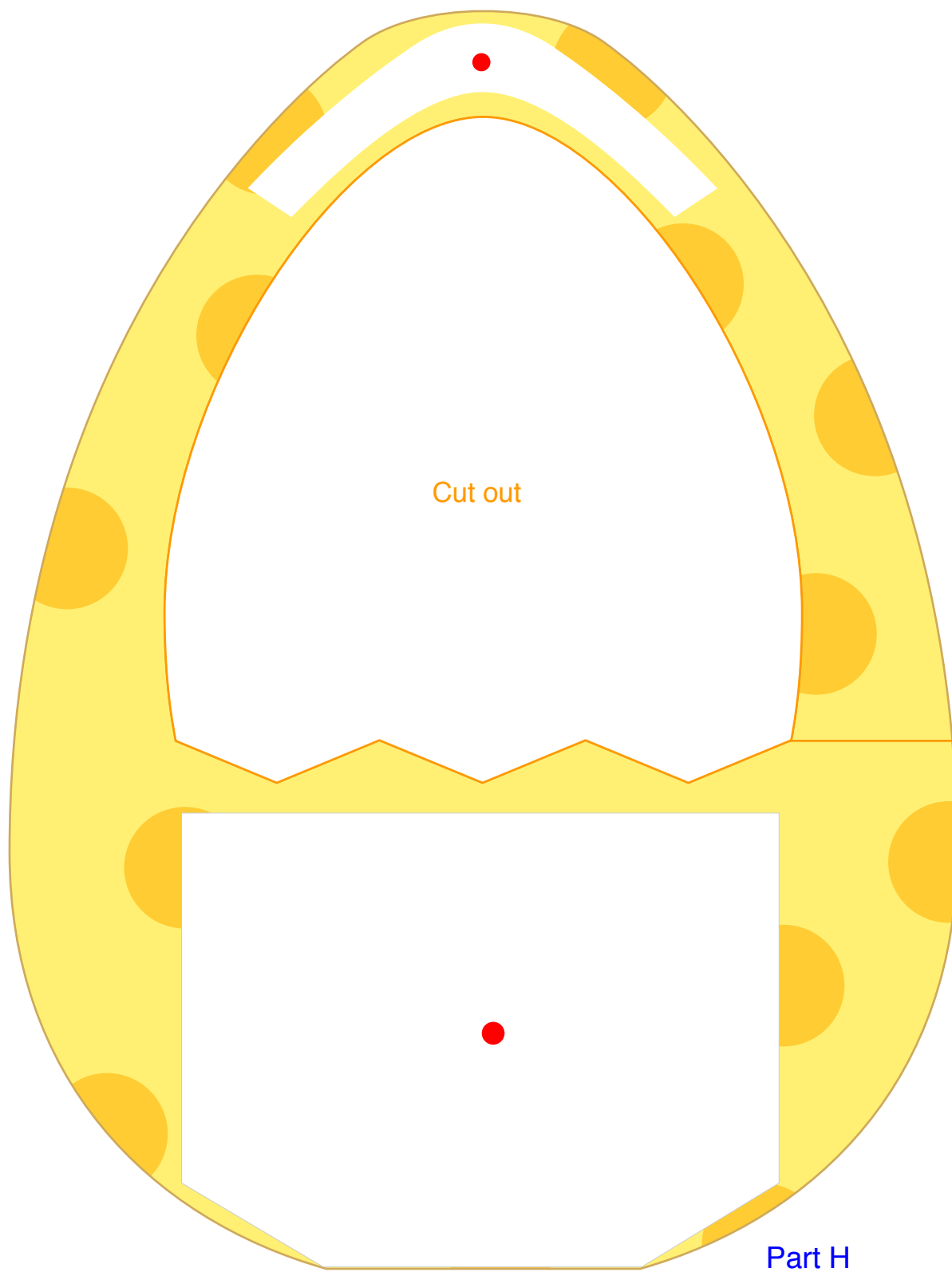


Part E-3

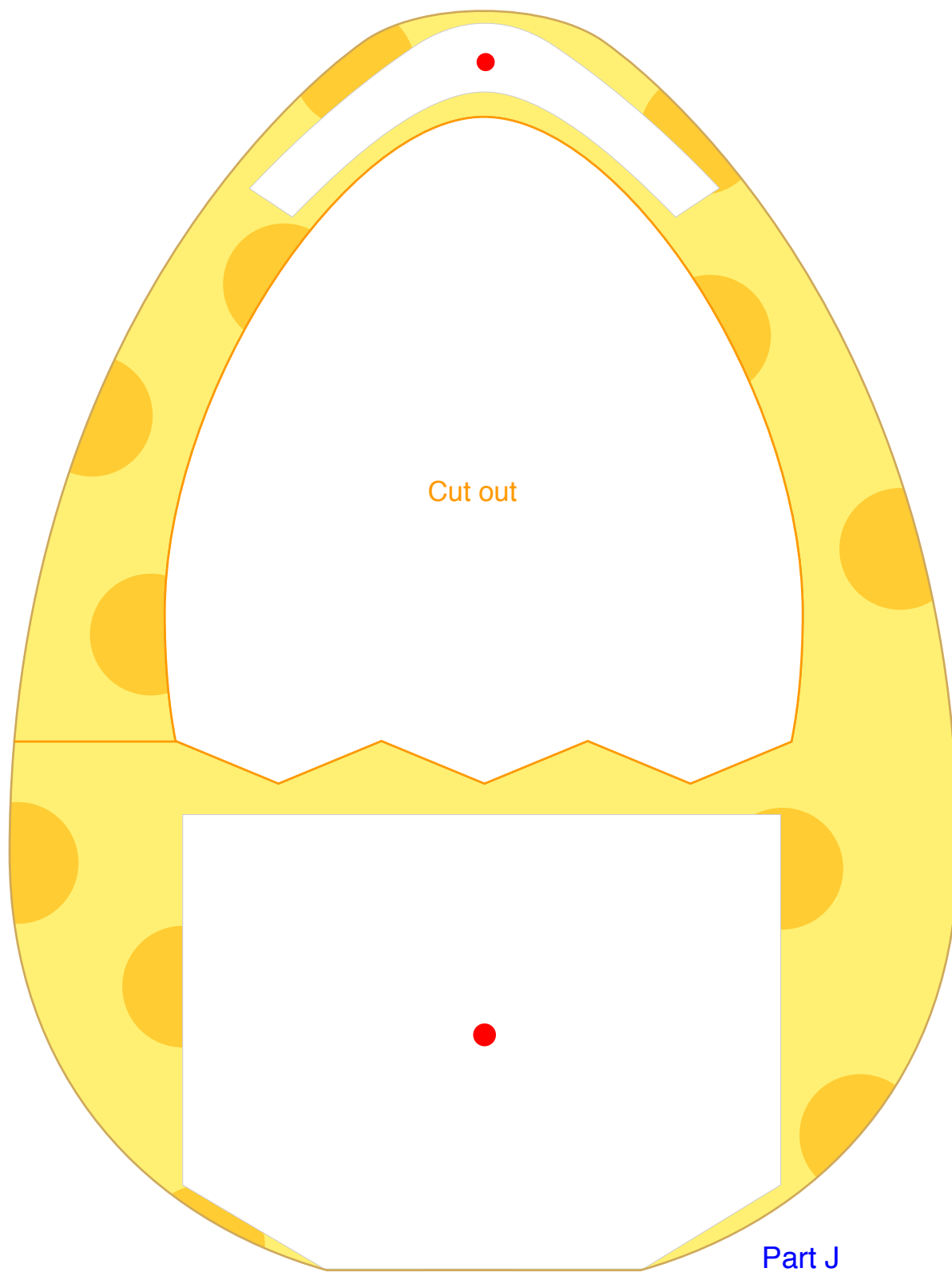
Part F (Attached parts)

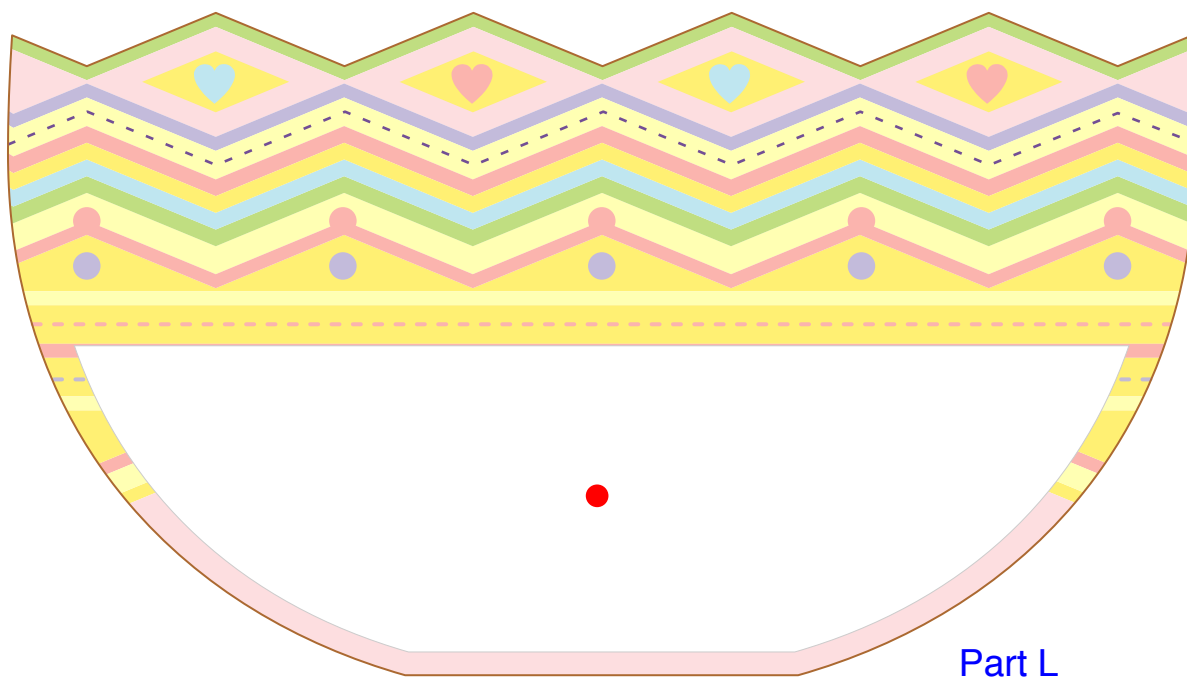
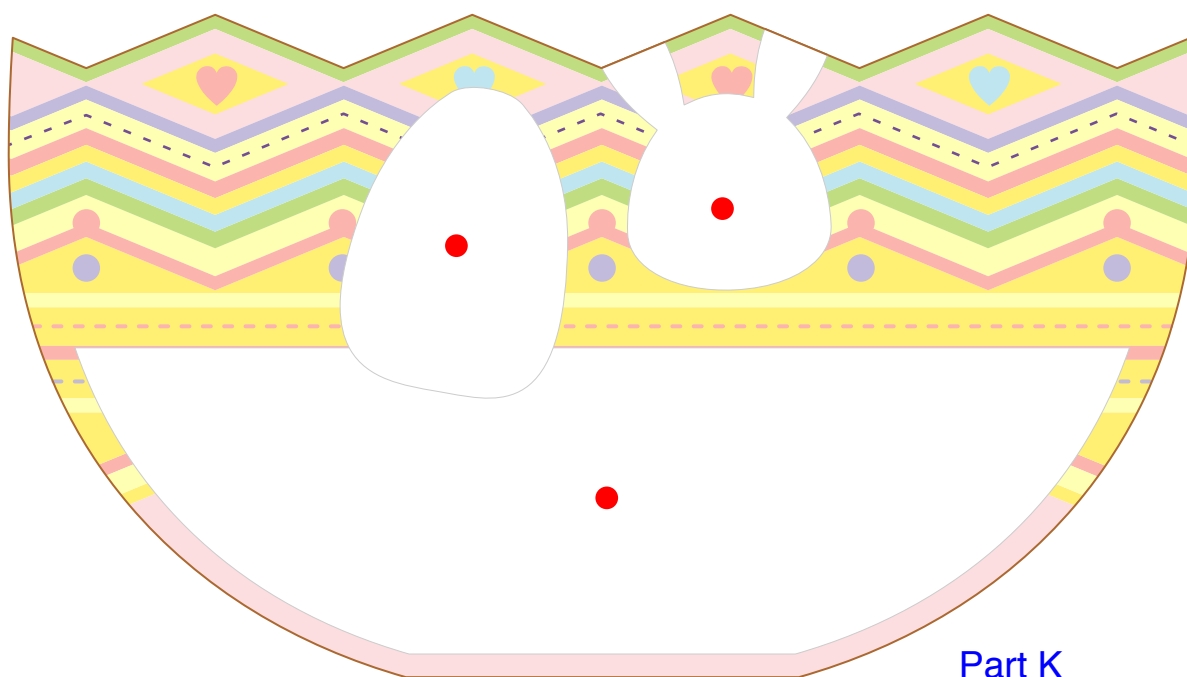


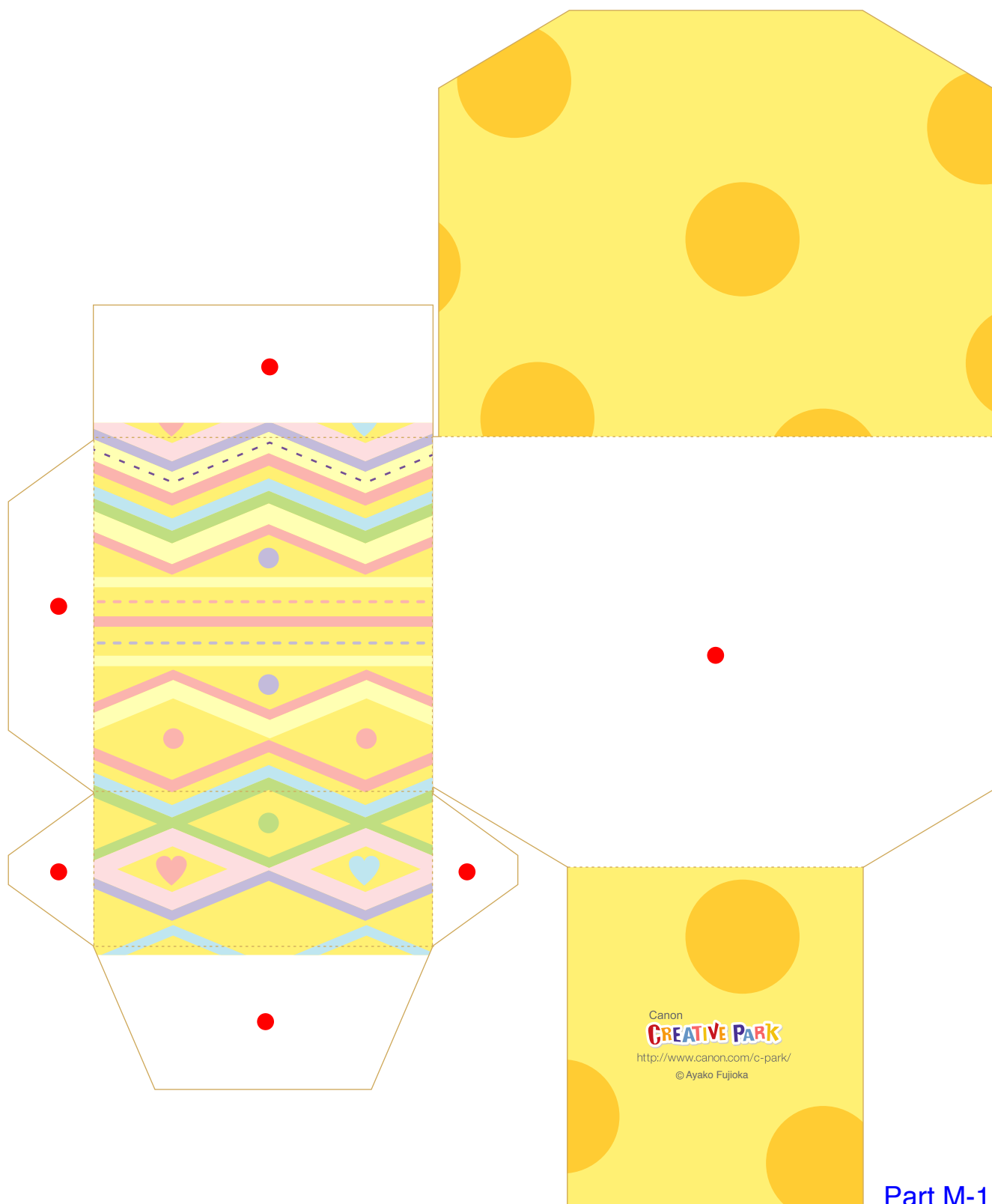




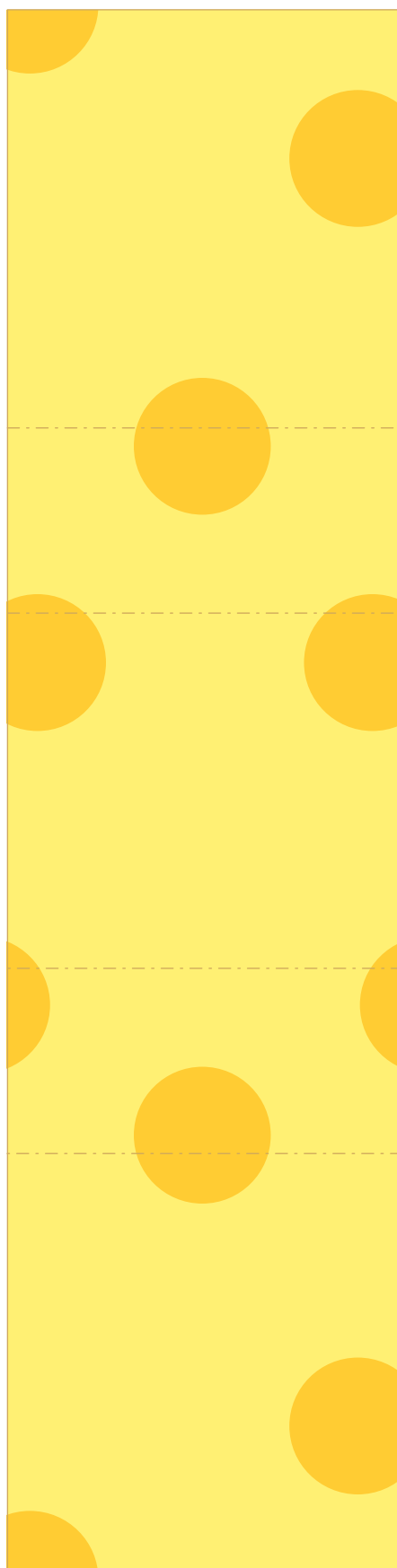












Part M-3