

CREATIVE PARK

<http://www.canon.com/c-park/en/>



View of completed model

Easter : Bunny Egg Holder

Easter is a Christian holiday celebrating both the resurrection of Christ after the Passion and Crucifixion and the coming of spring. A favorite Easter tradition involves hiding Easter eggs with colorful designs painted on their shells in the grass or elsewhere for children to find. Children believe Easter eggs are brought by the Easter Bunny, a symbol of fertility and prosperity. This papercraft model is a box patterned after the Easter Bunny. Remove the top of the box to use as a storage bin. The model also features an egg holder, featuring eggs that break into two to reveal chicks inside.

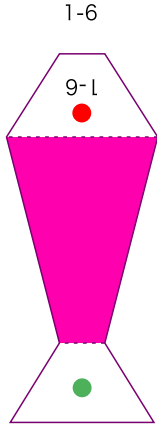
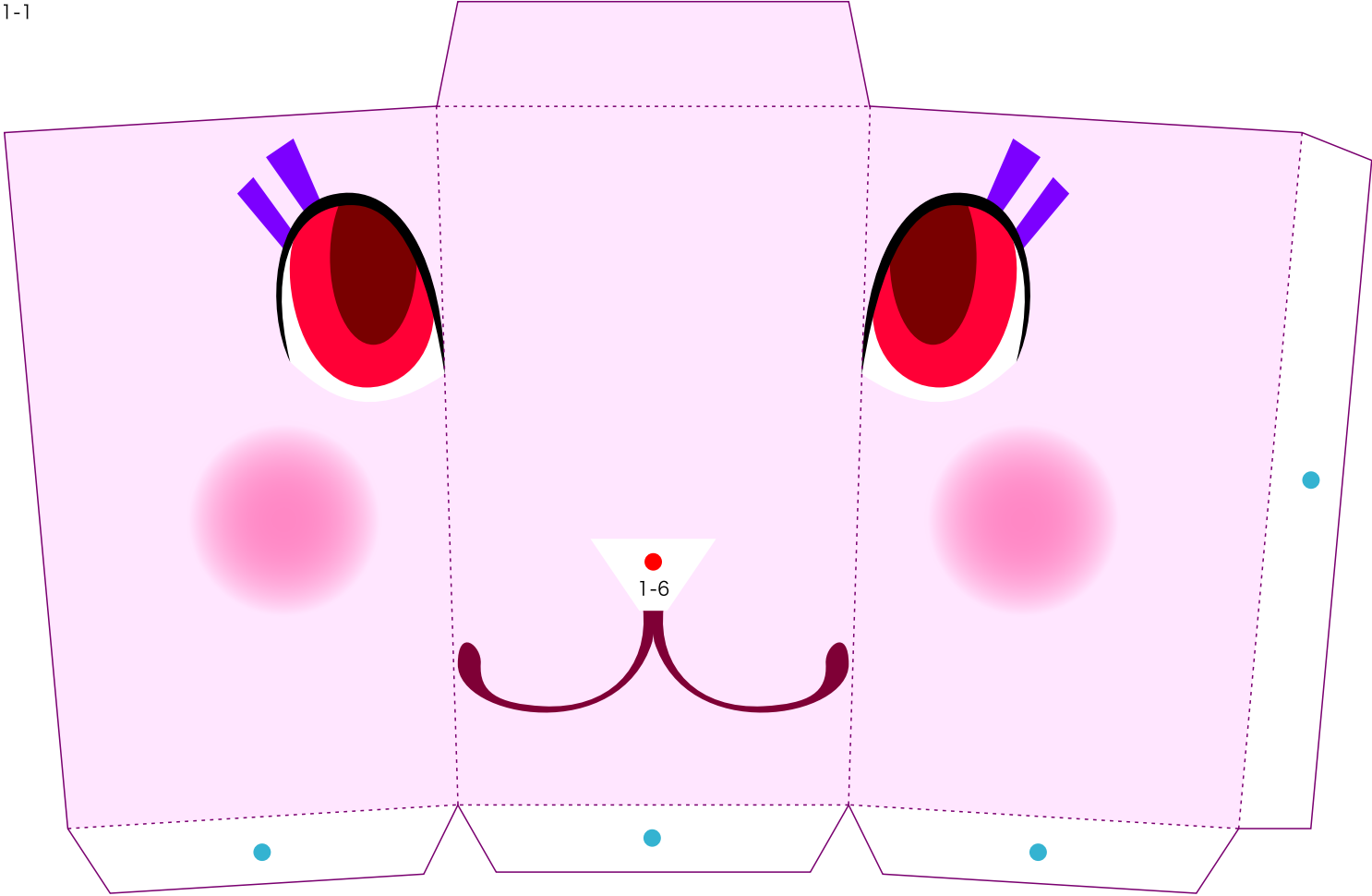
■ Parts list (pattern) : Twelve A4 sheets (No. 1 to No. 12)

■ No. of Parts : 27

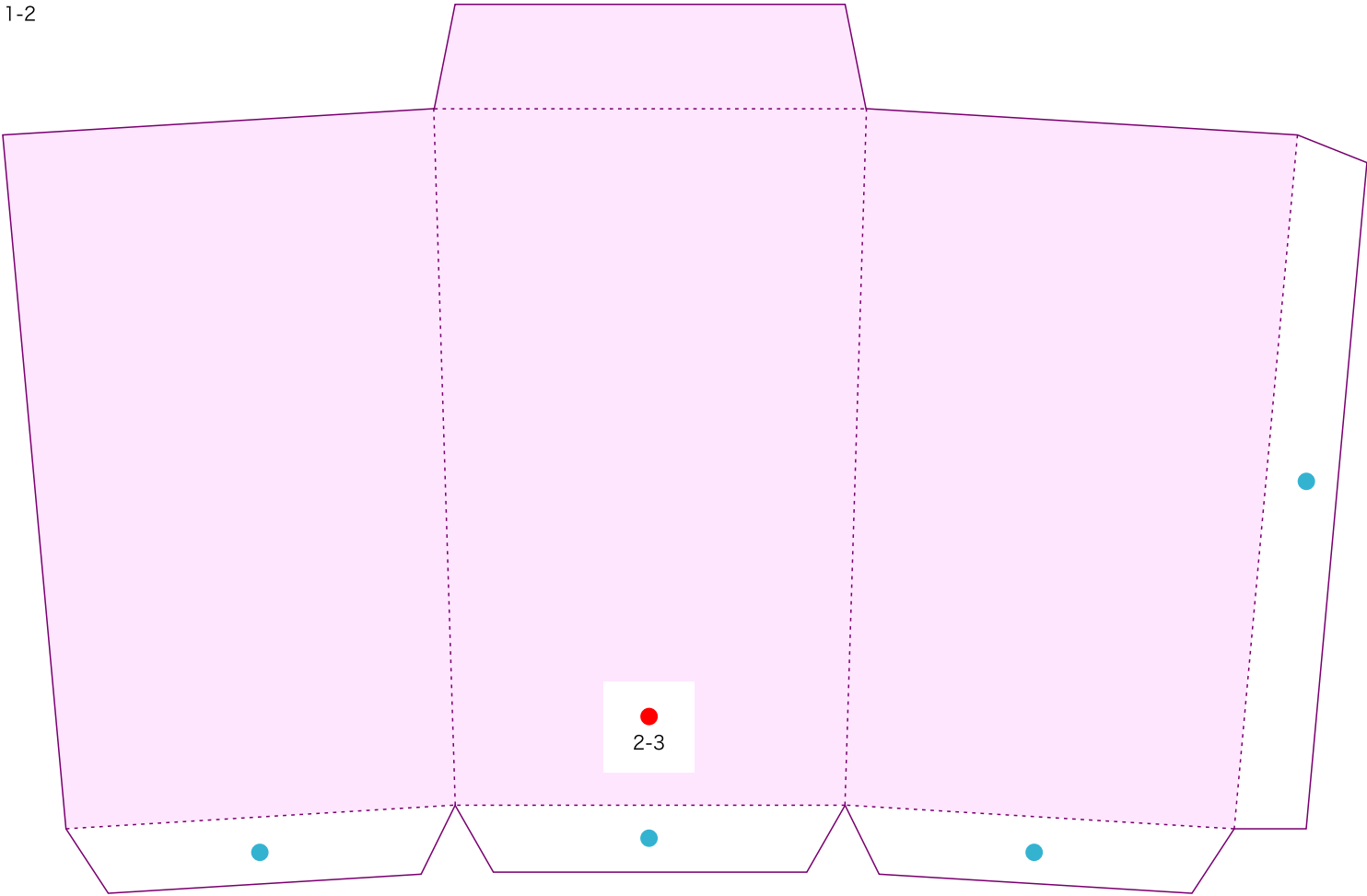
* Build the model by carefully reading the Assembly Instructions , in the parts sheet page order.



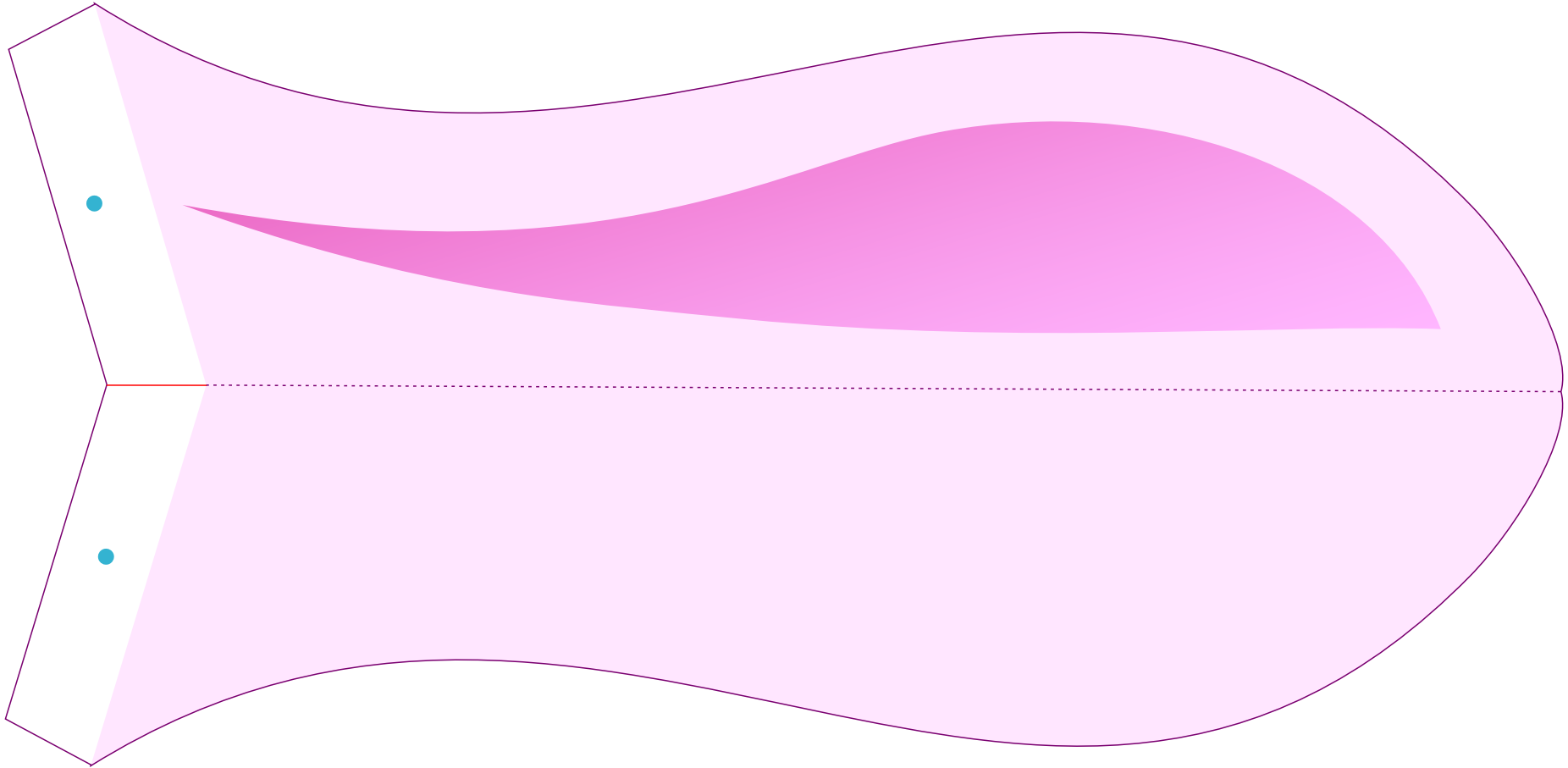
1-1



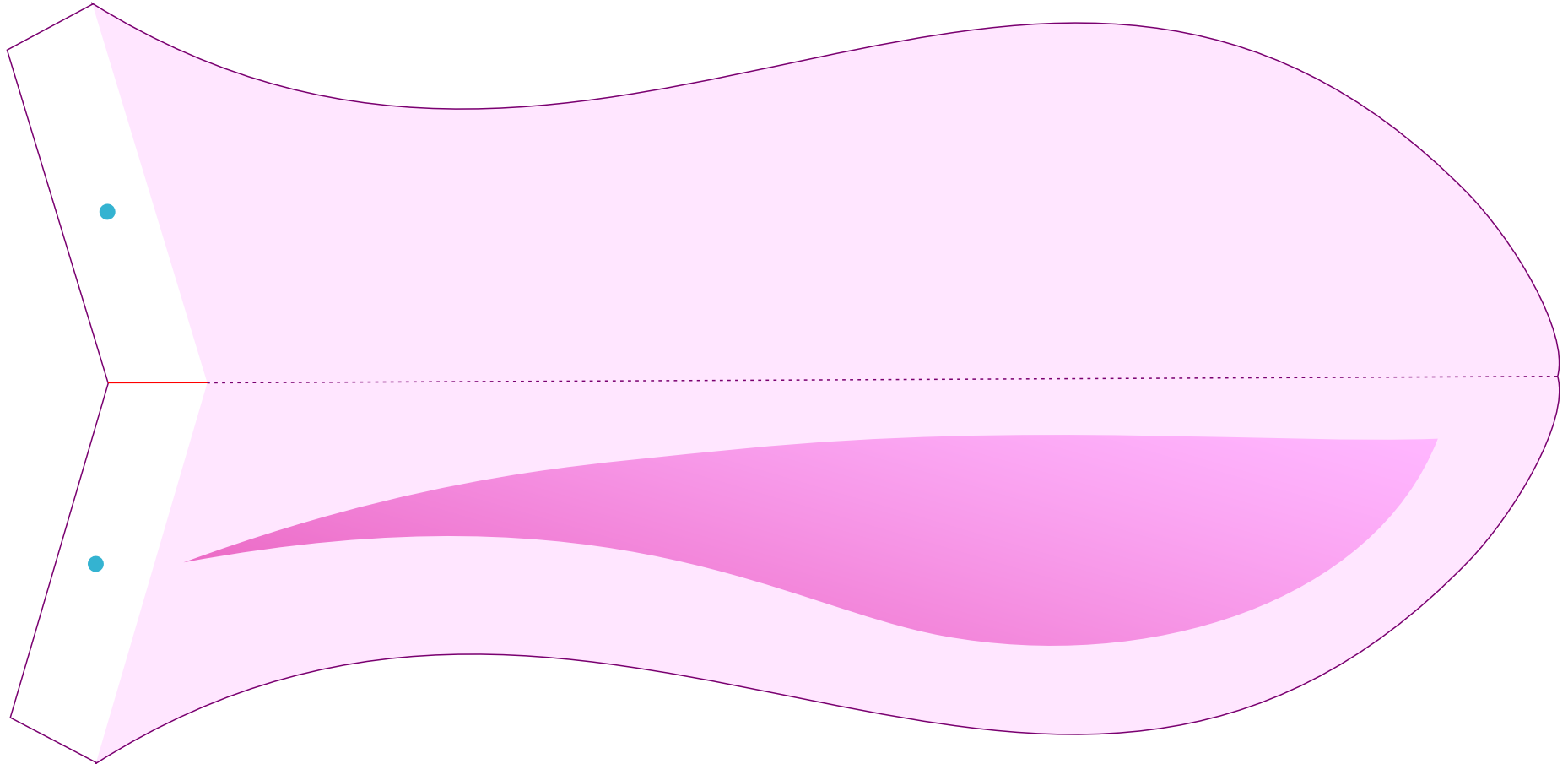
1-2



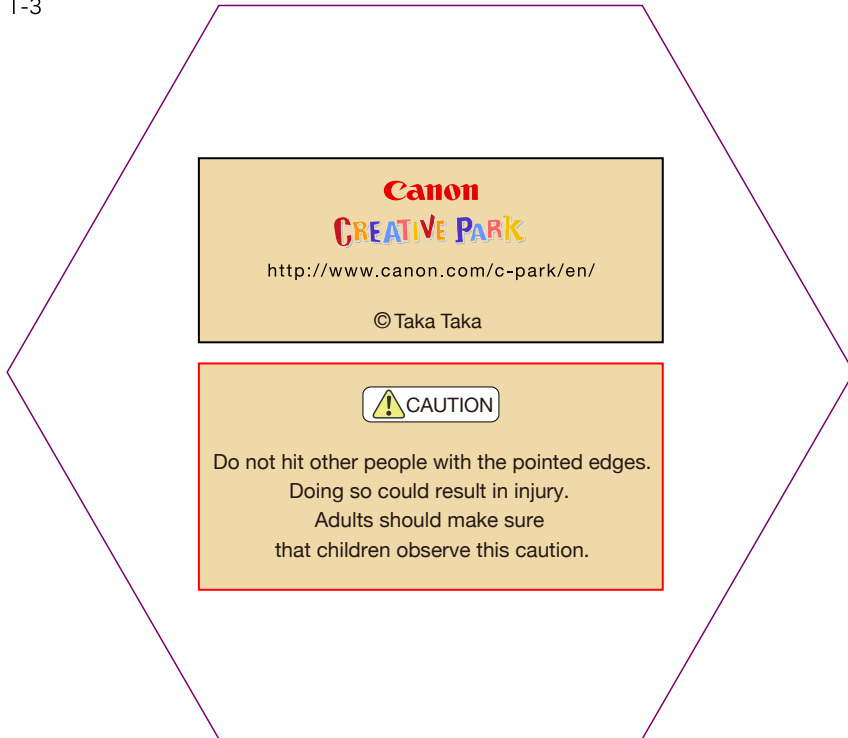
1-4



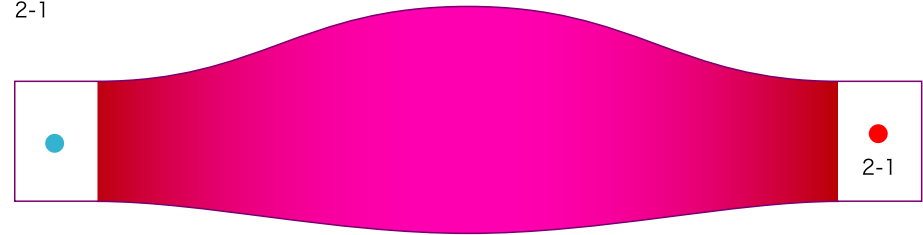
1-5



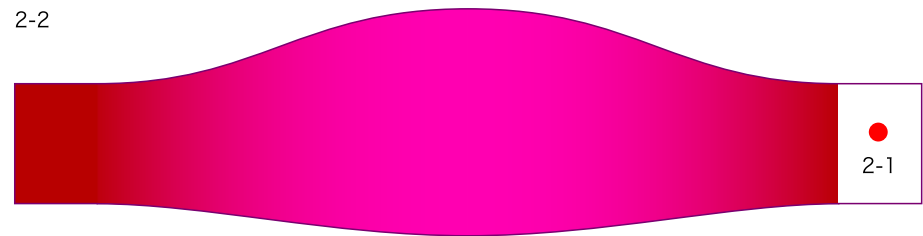
1-3



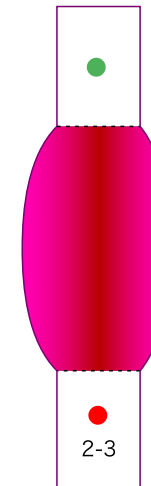
2-1



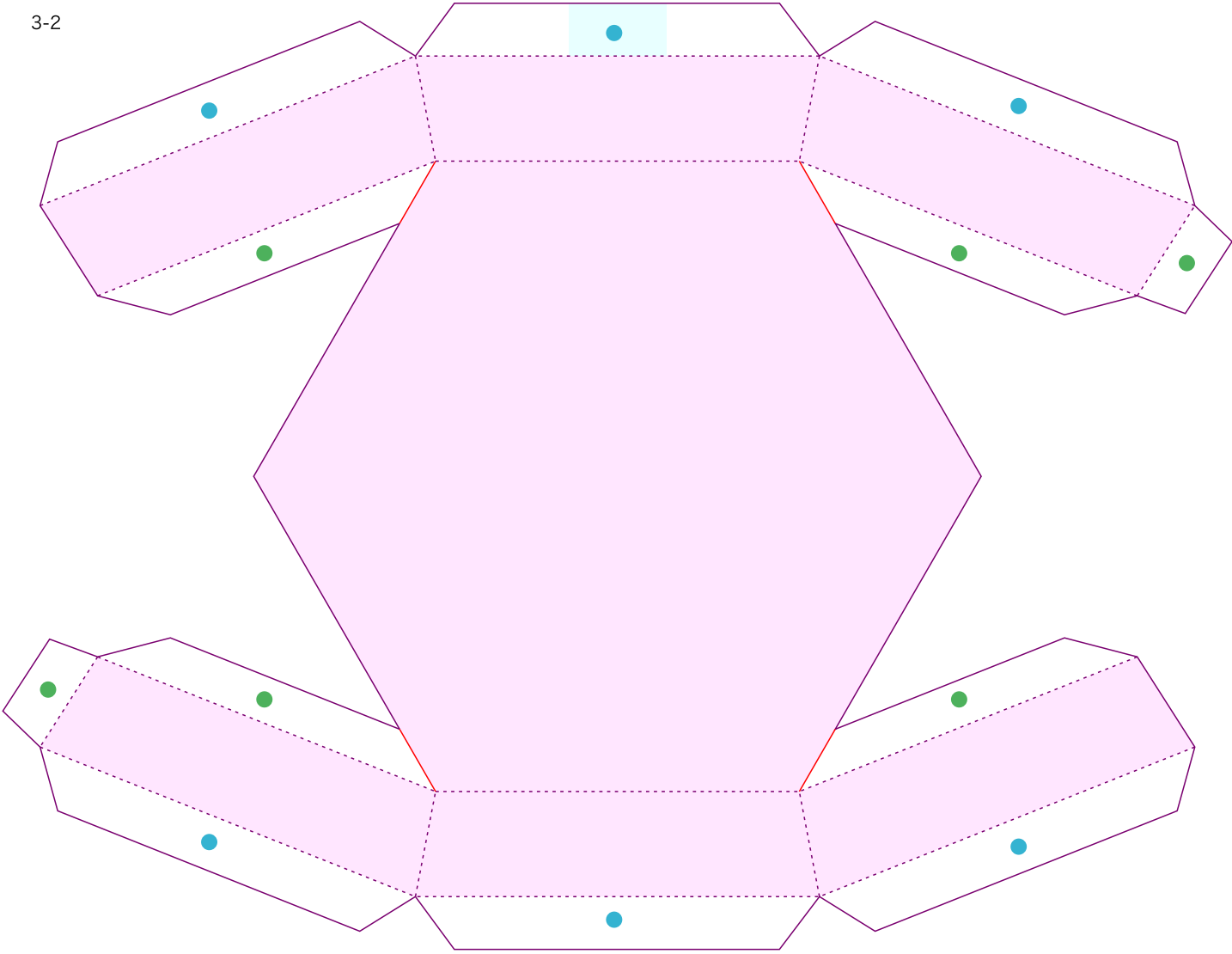
2-2



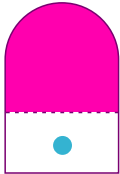
2-3



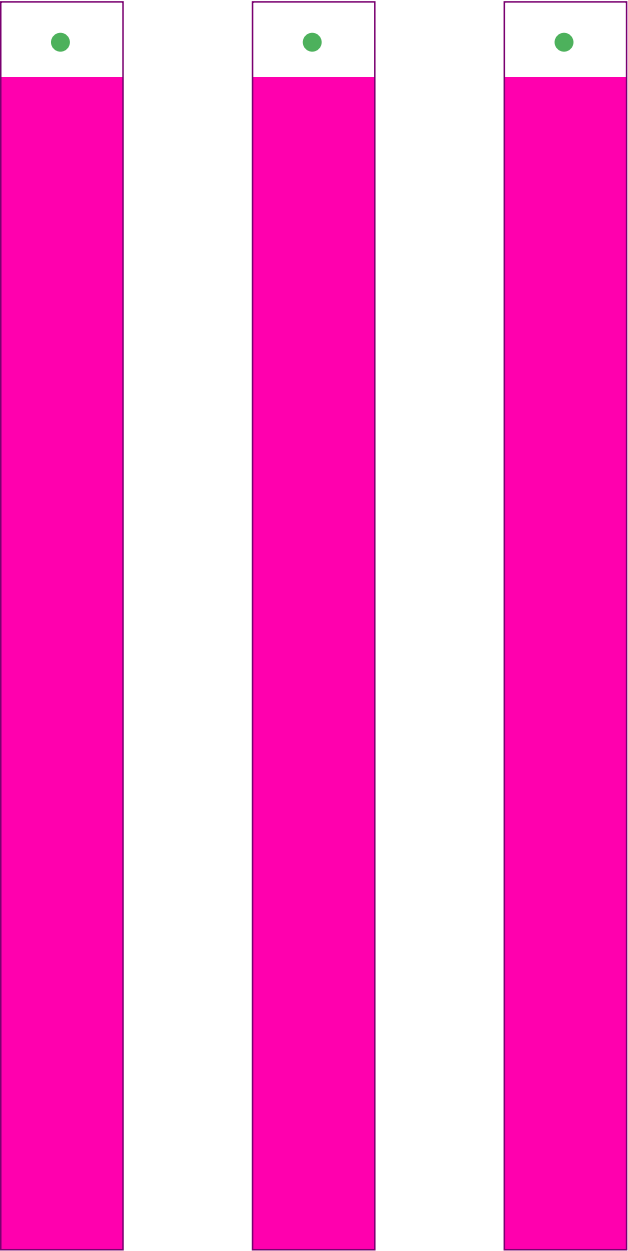
3-2



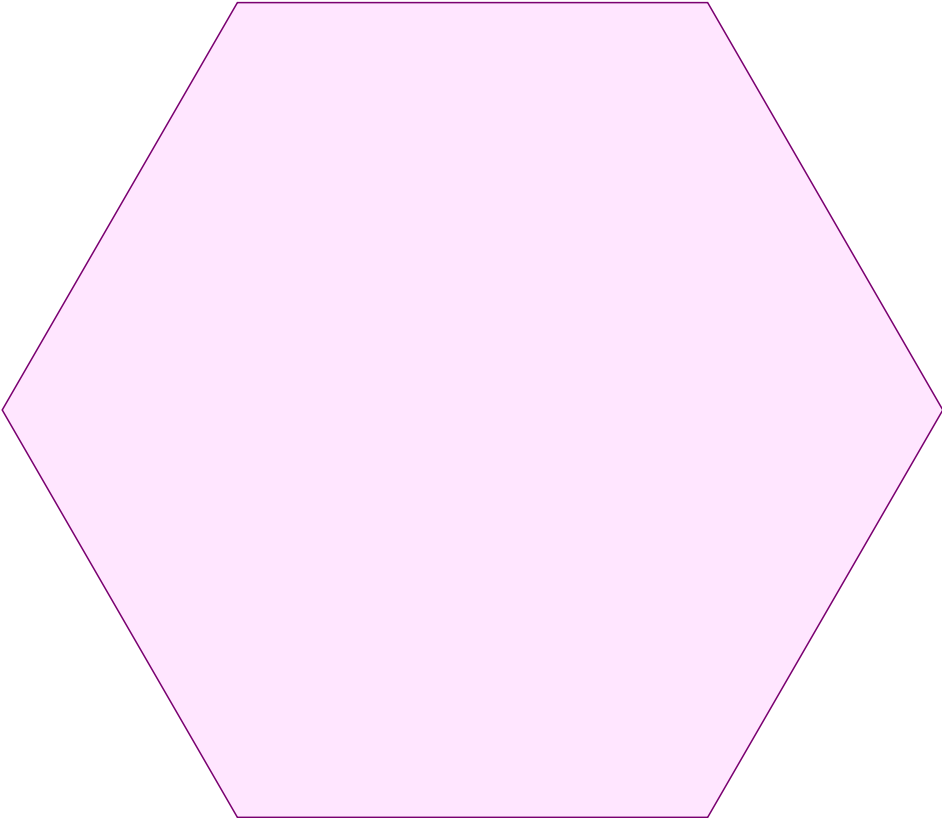
3-3



3-1



3-4

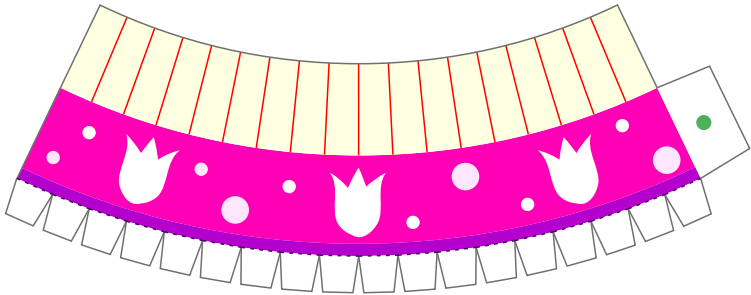


Easter : Bunny Egg Holder : Pattern

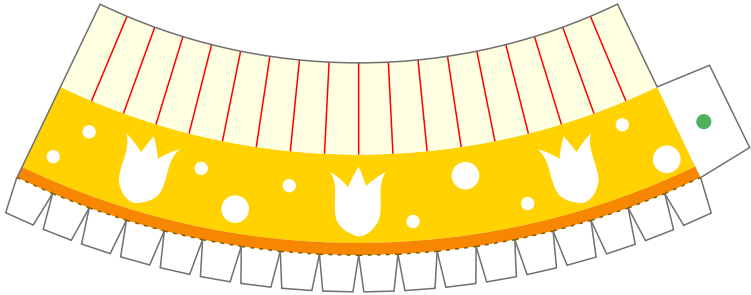
© Canon Inc. © Taka Taka



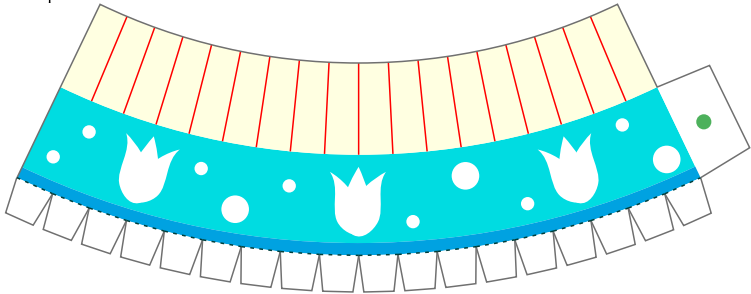
4



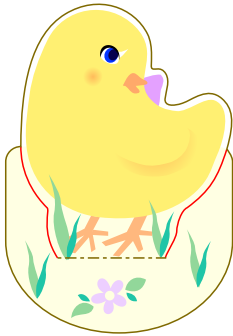
4



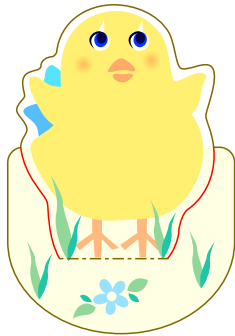
4



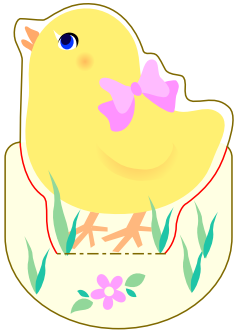
5



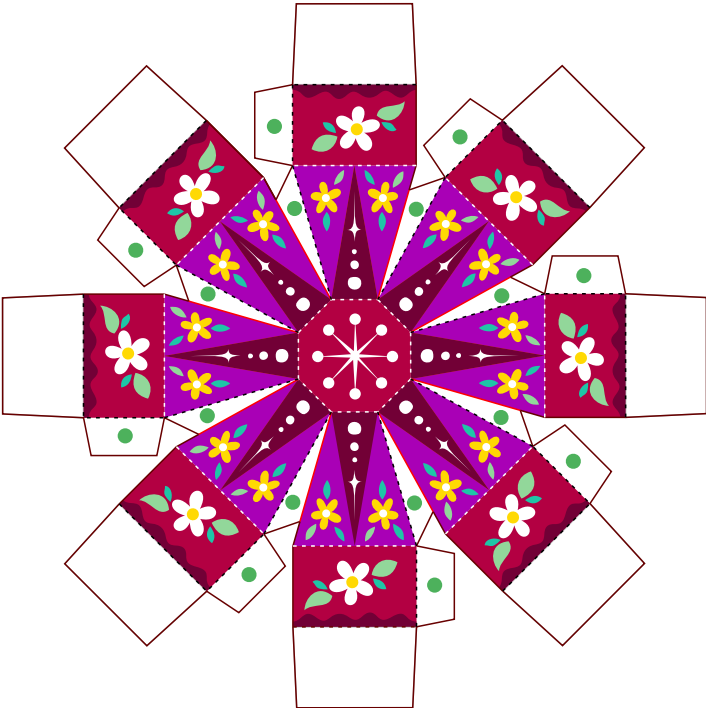
5



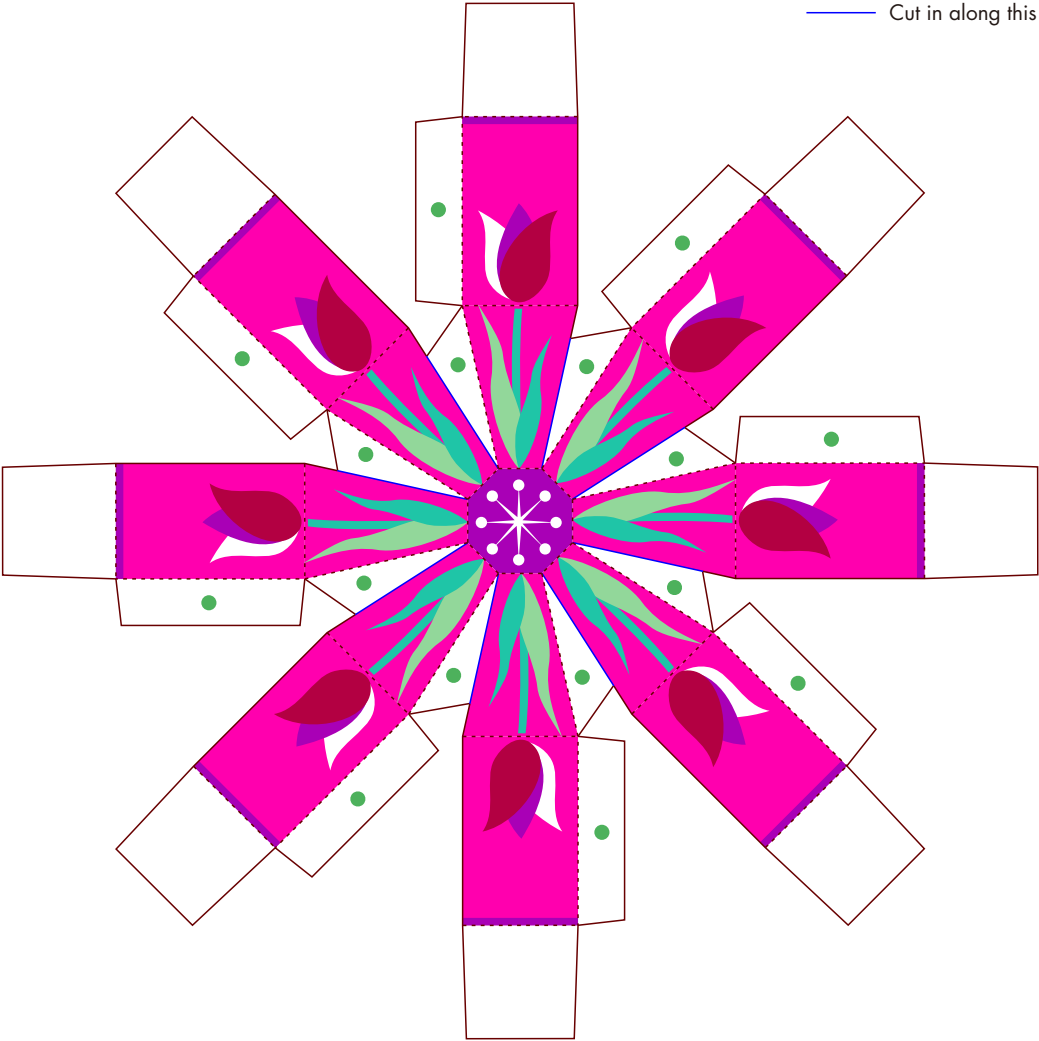
5



6-1

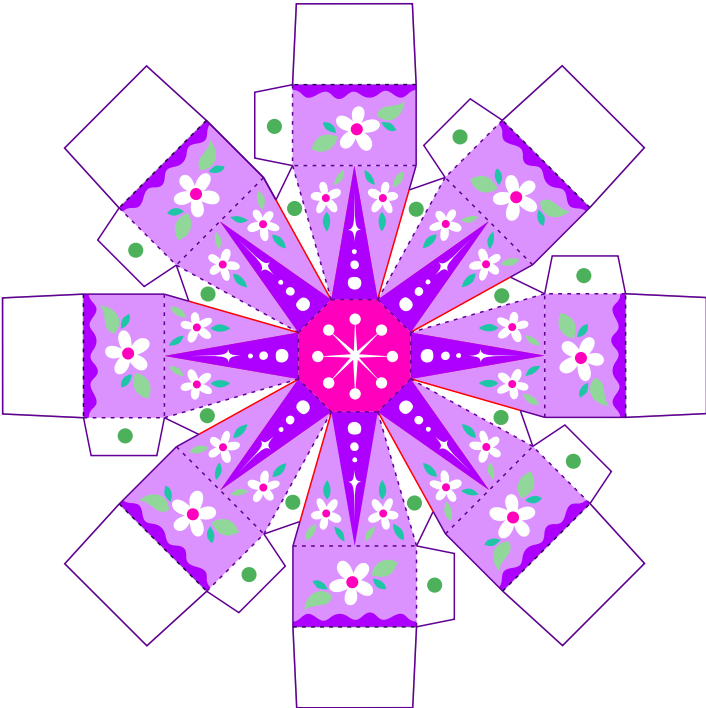


6-2

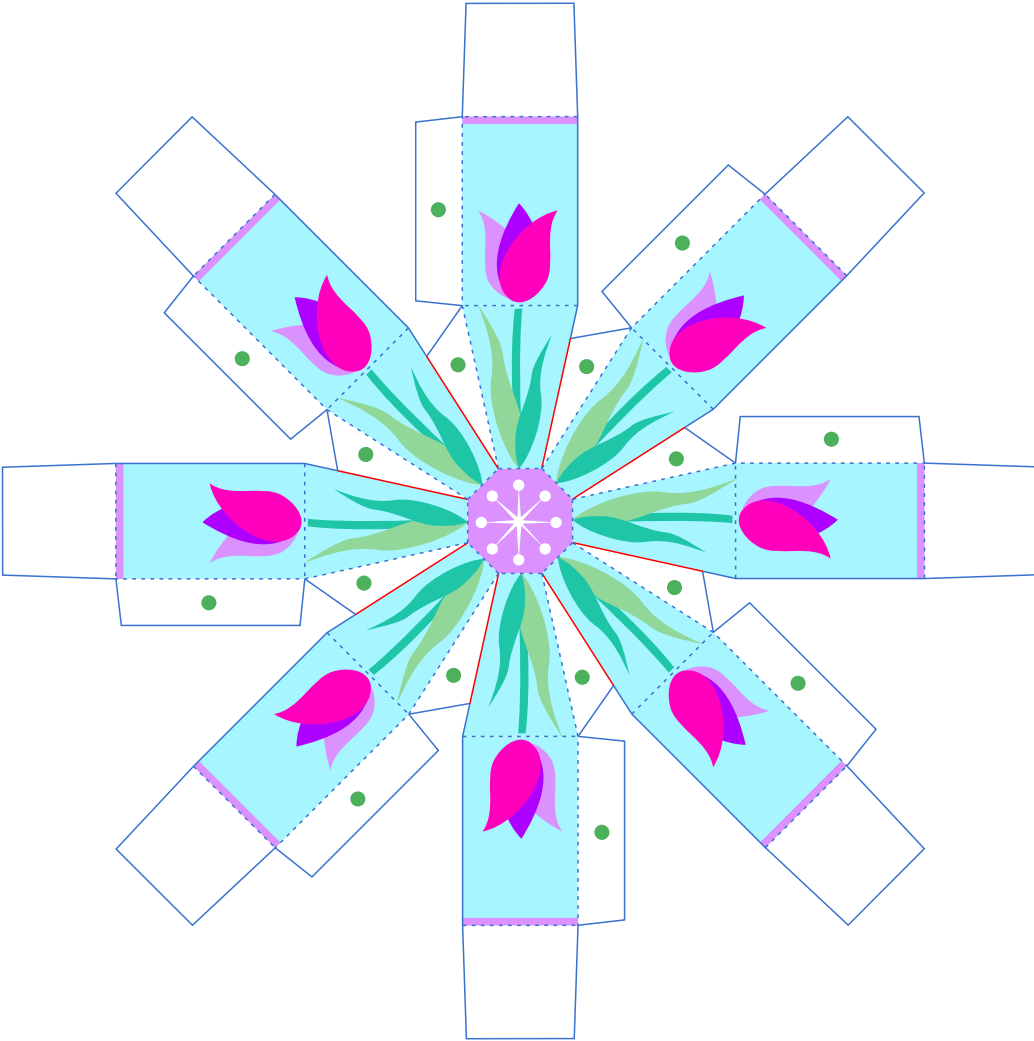


— Cut in along this line.

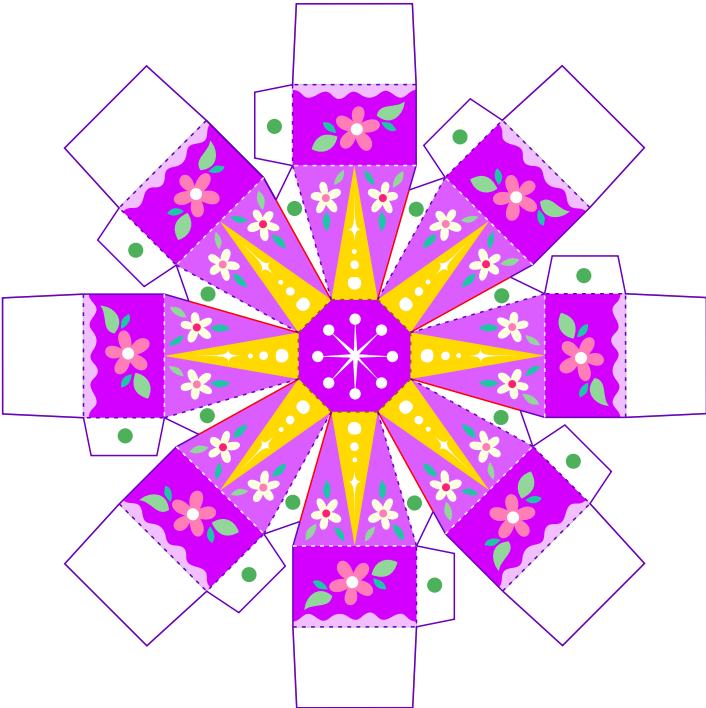
6-1



6-2



6-1



6-2

