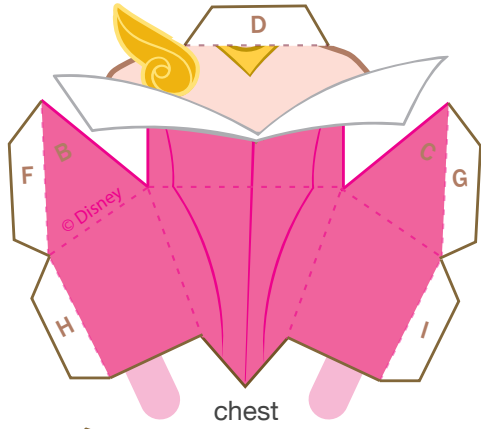
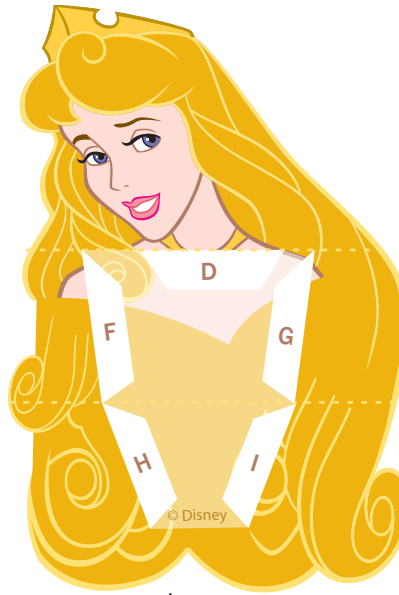


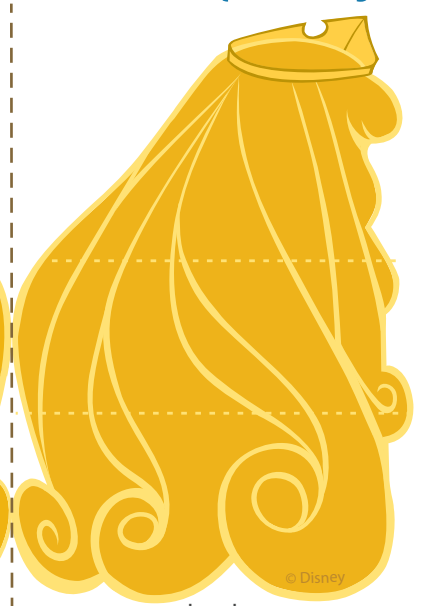
Aurora Papercraft



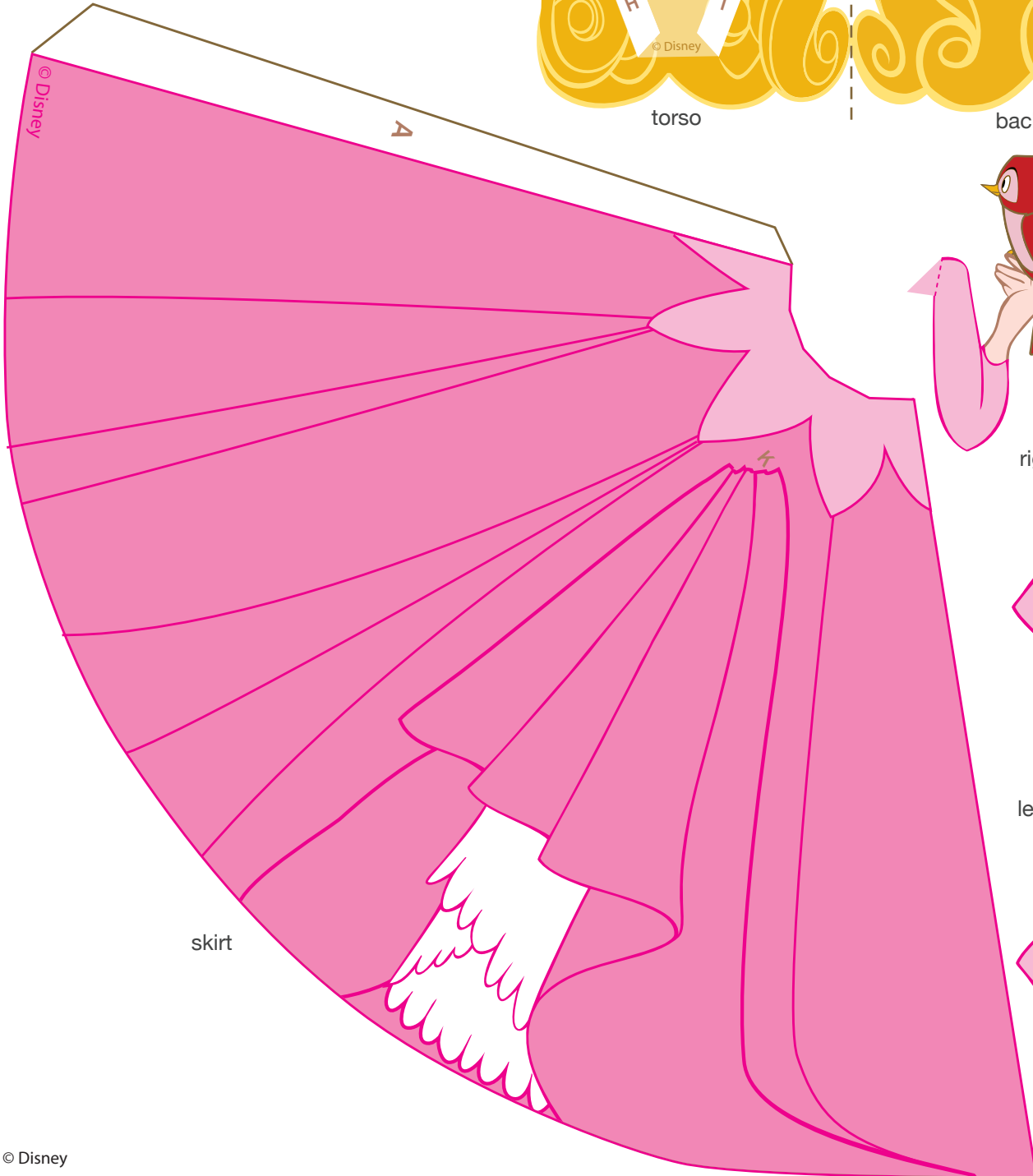
chest



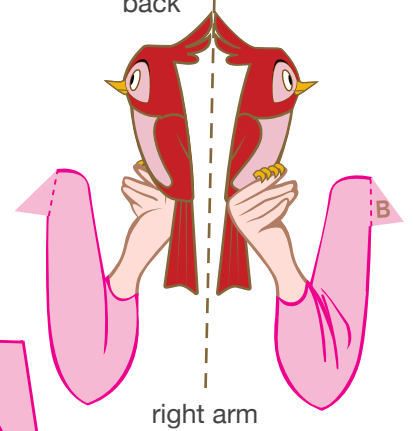
torso



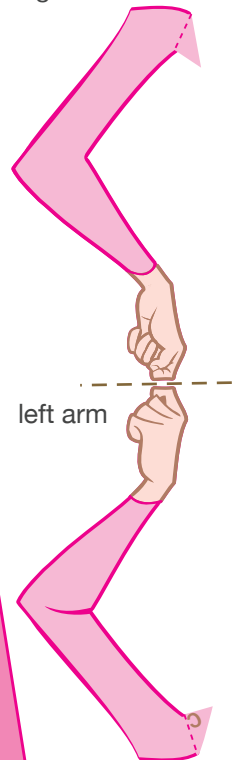
back



skirt



right arm



left arm

1. Print out your princess on regular paper or cardstock. Cut out each piece with a craft knife or scissors. Do not cut along the dashed lines -- this is where you will fold the paper.
2. Line up Aurora's back with her torso and glue them together so that the design is now two-sided. After the glue has dried, fold the bottom part of Aurora's torso towards you along the bottom dashed line. Then, fold Aurora's face away from you on the top dashed line across her shoulders.
3. Take Aurora's chest piece and fold along each dashed line. Make each fold away from you.
4. Spread glue on the D tab of Aurora's chest and press it into place on the D area on Aurora's torso. Make sure her shoulders are lined up correctly.
5. After the glue dries, add glue to the F, G, H, and I tabs and press them into place. Hold the pieces together until the glue dries. You may need to use a pen or pencil inside her chest area to position the tabs just right.
6. Fold each of Aurora's arms and glue them so that the design is two sided. Make sure they are lined up before the glue dries. Attach the arms to each side of Aurora's body under each shoulder by gluing the B tab to the B area and C tab to the C area.
7. Glue Aurora's skirt so that it makes the shape of a cone.
8. Finally, attach Aurora's completed torso to her skirt by gluing the white side of the tabs at her waist to the top of the skirt.