

Giraffa stag beetle: Pattern

Canon ® is a registered trademark of Canon Inc. © Canon Inc. © Y. Watanabe

Canon



http://www.canon.com/c-park/en/



View of completed model

Giraffa stag beetle

Editor:  THE NATIONAL SCIENCE MUSEUM
国立科学博物館

Scientific name: *Prosopocoilus giraffa*. Giraffa stag beetles are found in Nepal, Indochina, the Malay peninsula, Southern India, and Indonesia. Male Giraffa stag beetles are 48.5-118 mm in length; females measure 35.5-48.6 mm. Giraffa stag beetles are the largest stag beetles in the world.

Giraffa stag beetles are currently divided into nine subspecies. The subspecies found in the Flores island (Indonesia) are especially popular due to their size, often growing to more than 110 mm.

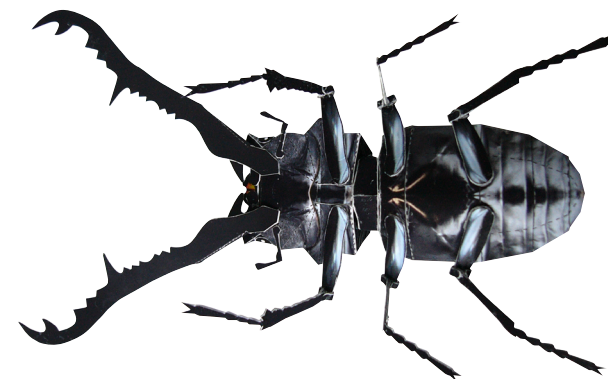
They have characteristic long jaws with bent tips, but due to their very length the actual pinching force exerted is weak. *Giraffa* means giraffe.

*This model was designed for Papercraft and may differ from the original in some respects.

■ Parts list(pattern):Three A4 sheets(No.1 to No.3)

■ No. of Parts:70

*Build the model by carefully reading the Assembly Instructions, in the parts sheet page order.



Giraffa stag beetle: Pattern

Canon ® is a registered trademark of Canon Inc. © Canon Inc. © Y. Watanabe

Canon



Giraffa stag beetle: Pattern

Canon ® is a registered trademark of Canon Inc. © Canon Inc. © Y. Watanabe

Canon

