

# Caucasus beetle: Assembly Instructions

Canon ® is a registered trademark of Canon Inc. © Canon Inc. © Y. Watanabe



## PAPER CRAFT

<http://www.canon.com/c-park/en/>

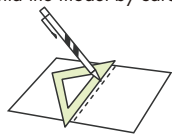


### View of completed model

\*This model was designed for Papercraft and may differ from the original in some respects.

### Assembly Instructions: Five A4 sheets (No. 1 to No. 5)

\*Build the model by carefully reading the Assembly Instructions, in the parts sheet page order.



\*Hint: Trace along the folds with a ruler and an exhausted pen (no ink) to get a sharper, easier fold.

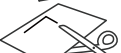
### Assembly Instructions



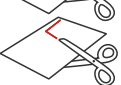
**Mountain fold (dotted line)**  
Make a mountain fold.



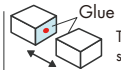
**Valley fold (dashed and dotted line)**  
Make a valley fold.



**Scissors line (solid line)**  
Cut along the line.



**Cut in line (solid line)**  
Cut along the line.



**Glue**  
The glue spot (colored dot) shows where to apply the glue.

**Glue spot (Red dot)**  
Glue parts with the same number together.

**Glue spot (Green dot)**  
Glue within the same part.

**Glue spot (Blue dot)**  
Glue to the rear of the other part.

#### Tools and materials



Scissors, set square, glue (We recommend stick glue), pencil, used ballpoint pen, toothpicks, tweezers, (useful for handling small parts)

#### Assembly tip



Before gluing, crease the paper along mountain fold and valley fold lines and make sure rounded sections are nice and stiff.

#### Caution



Glue, scissors and other tools may be dangerous to young children so be sure to keep them out of the reach of young children.

Before starting assembly: Writing the number of each section on its back side before cutting out the sections is highly recommended. (\* This way, you can be sure which section is which even after cutting out the sections.)

→ Indicates where sections should be glued together.

1 Assemble Parts 7-9 in the same manner.

2

3

4 Assemble Parts 10-12 in the same manner.

5

6

Do not glue this area.

13

14

15 Assemble Parts 19-21 in the same manner.

16

17

18

Do not glue this area.

22-24 Assemble Parts 22-24 in the same manner.

25

26

27

28

29

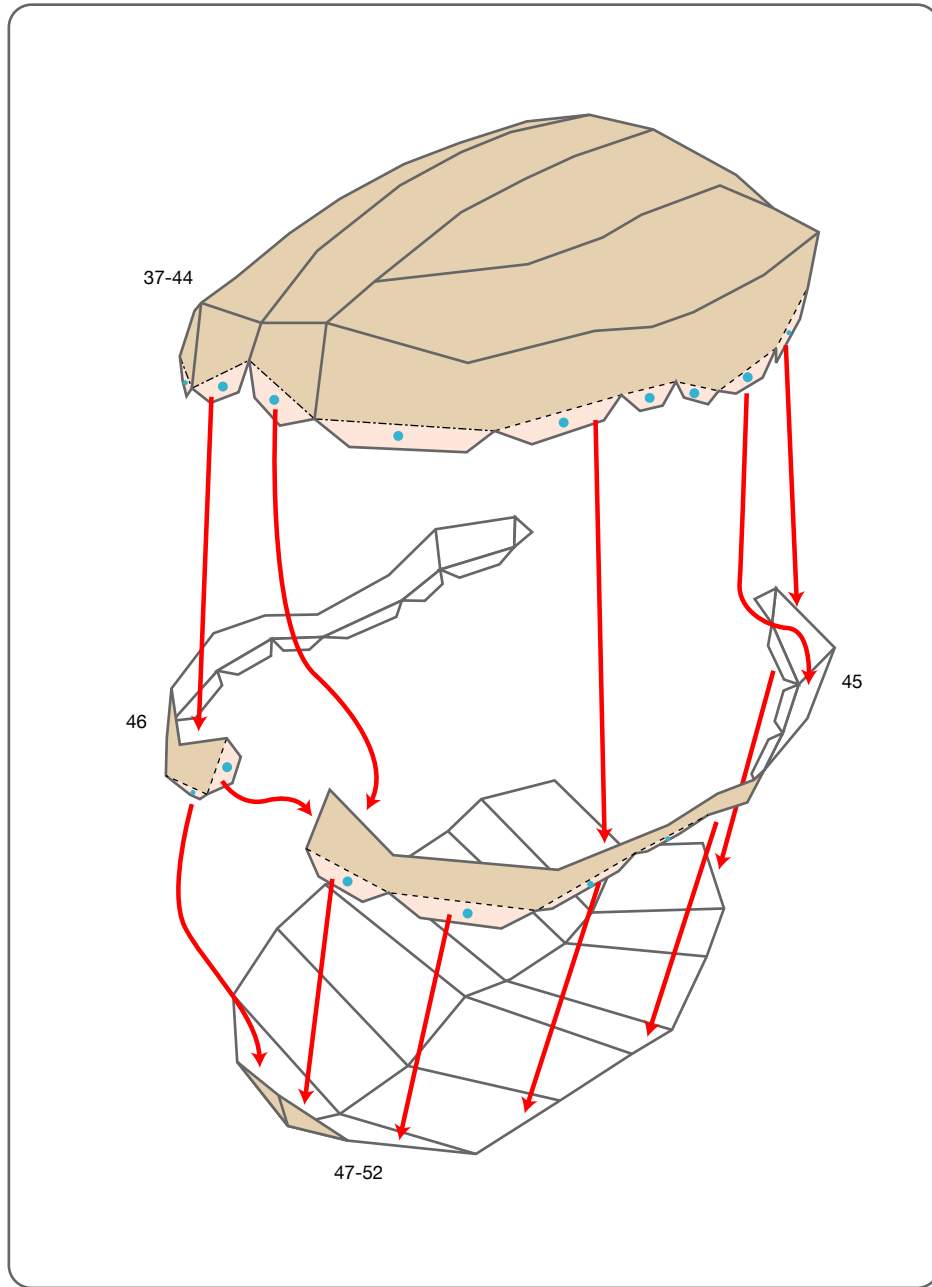
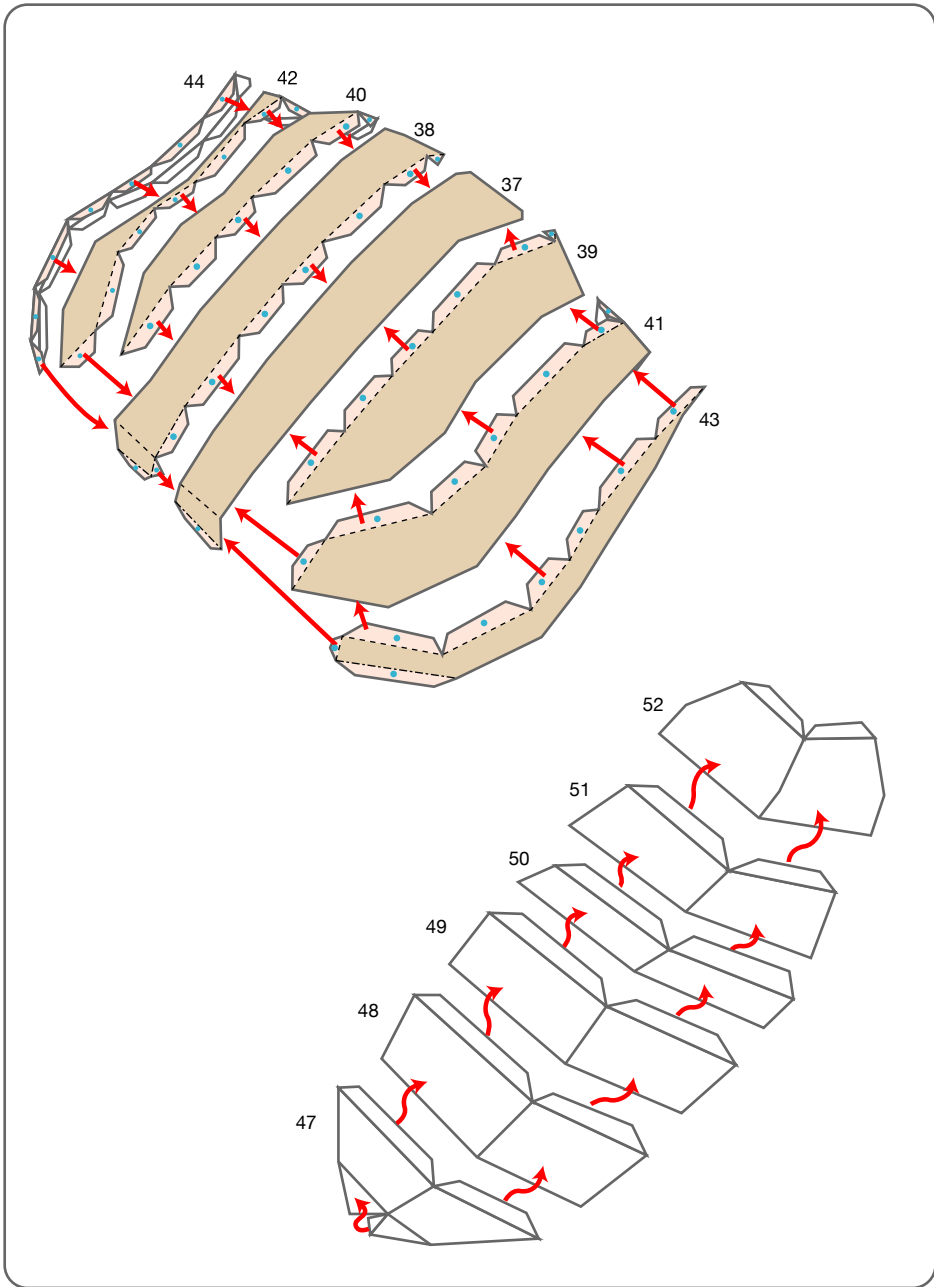
30

31-33 Assemble Parts 31-33 in the same manner.

34-36 Assemble Parts 34-36 in the same manner.

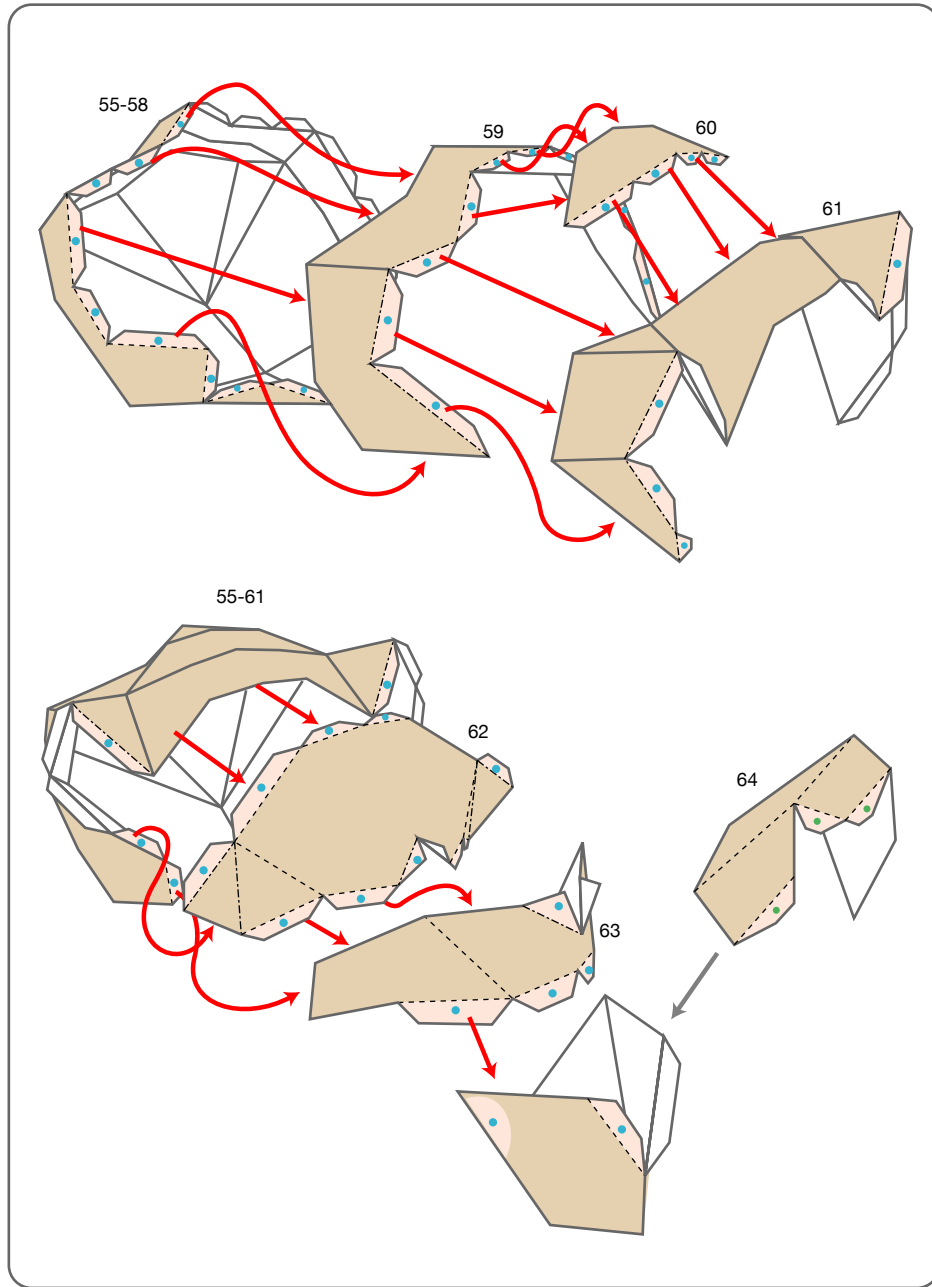
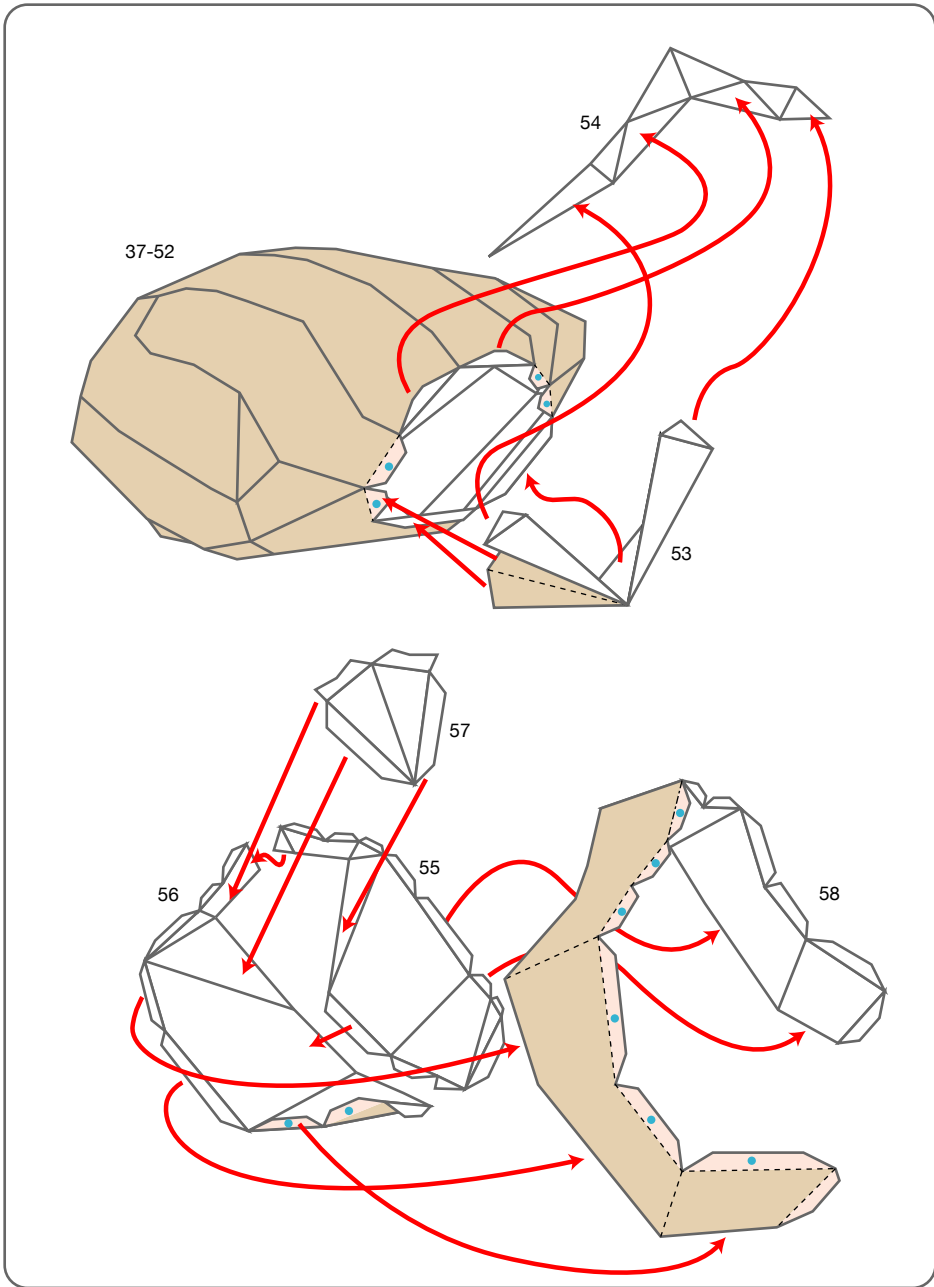
# Caucasus beetle: Assembly Instructions

Canon ® is a registered trademark of Canon Inc. © Canon Inc. © Y. Watanabe

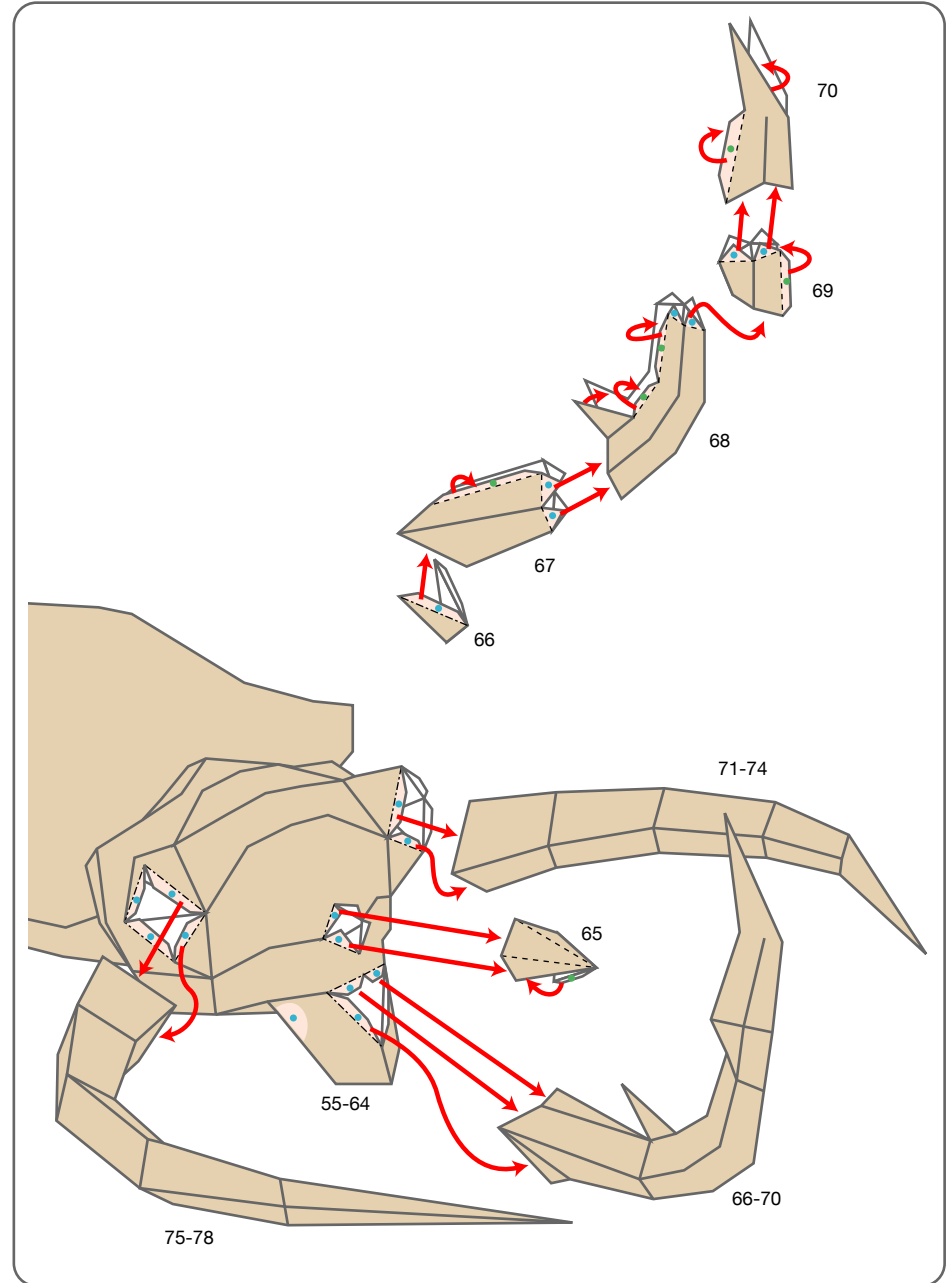
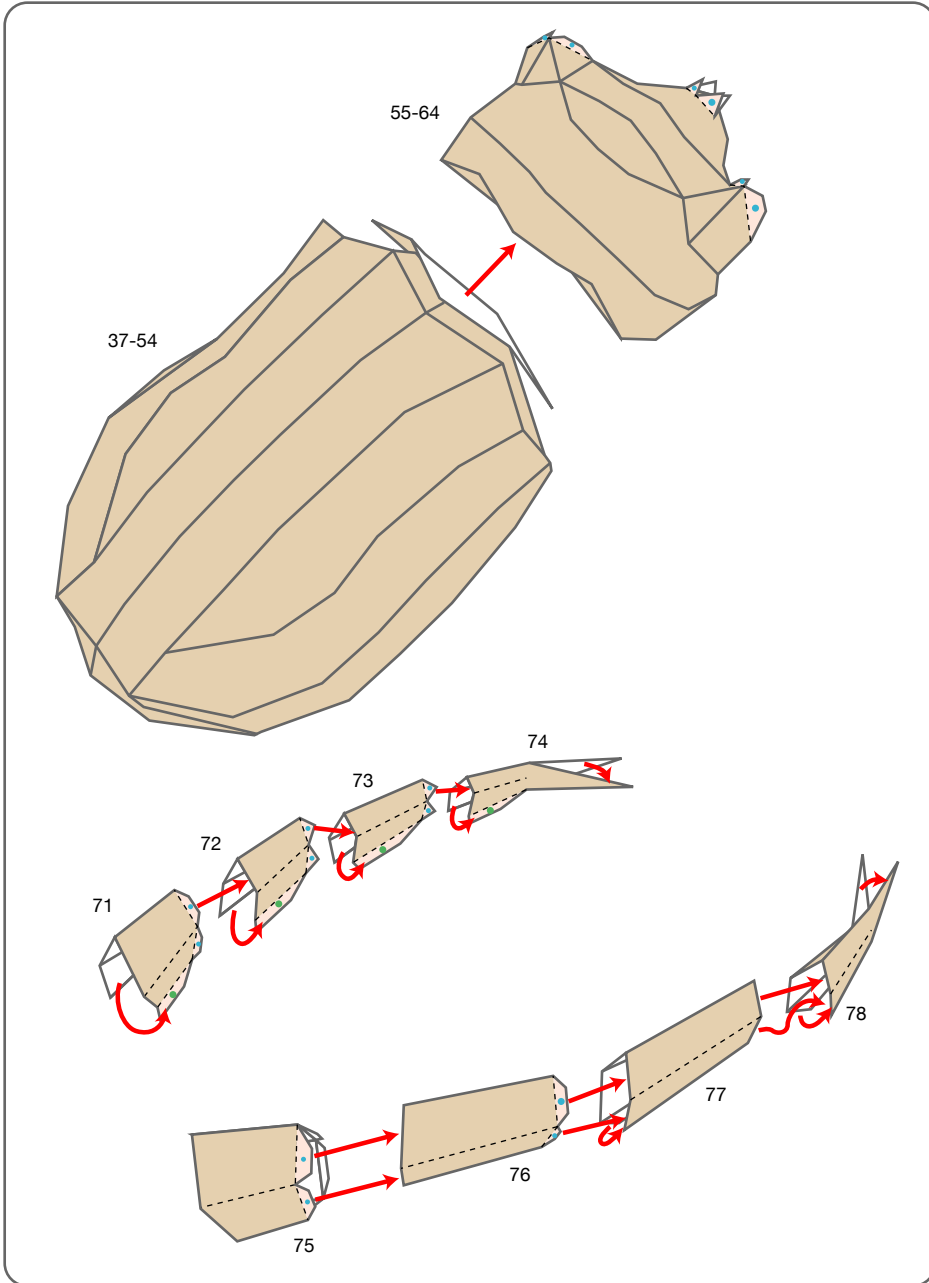


# Caucasus beetle: Assembly Instructions

Canon ® is a registered trademark of Canon Inc. © Canon Inc. © Y. Watanabe



# Caucasus beetle: Assembly Instructions



# Caucasus beetle: Assembly Instructions

