

Wright Flyer

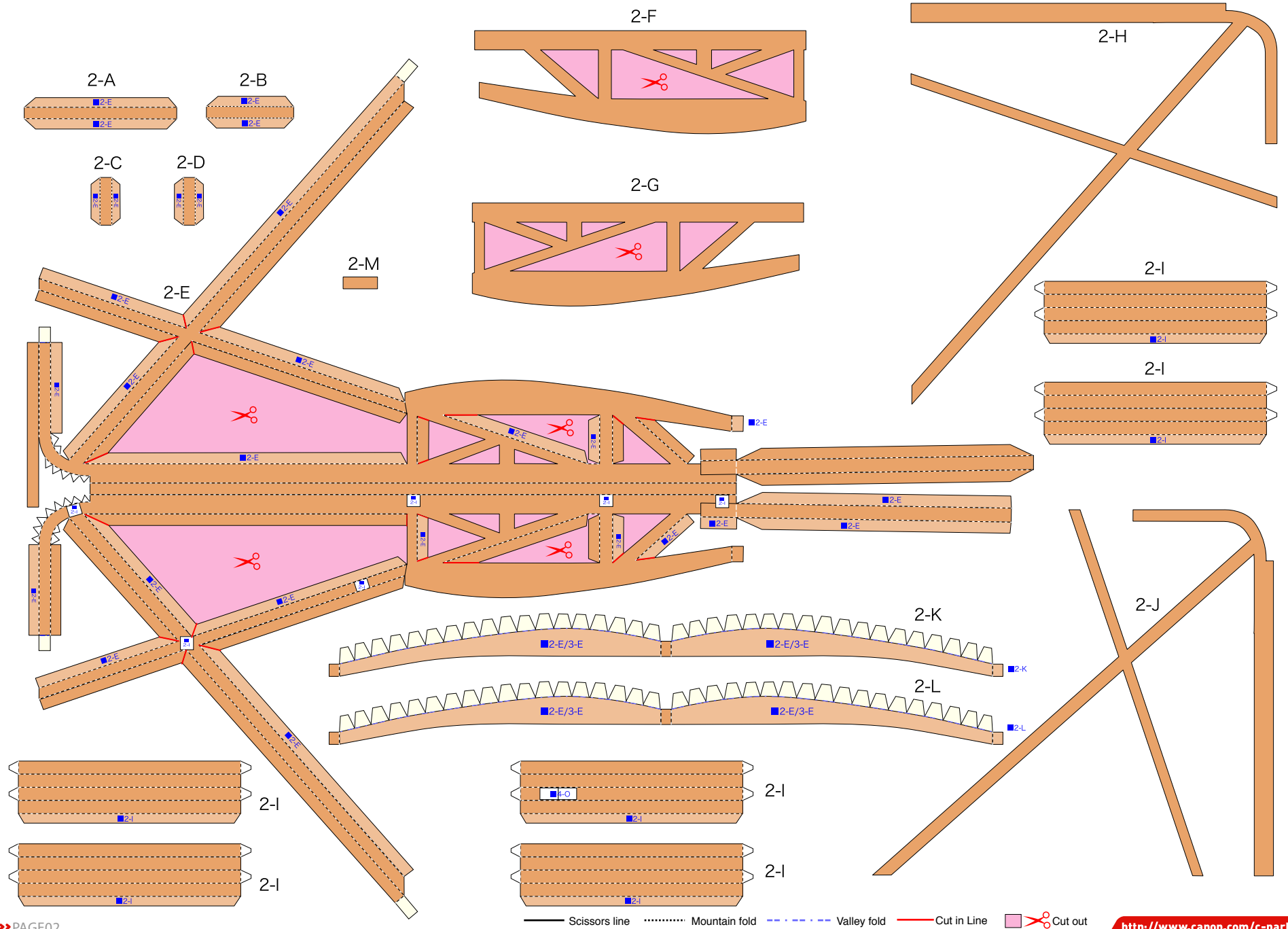
The Wright Flyer is the aircraft built by the Wright brothers, Wilbur Wright and his younger brother Orville. The main wings were of biplane configuration, and it featured a gasoline engine and two 2.6m diameter propellers which were powered by a chain drive. It was revolutionary in the fact that it could hold a pilot, and it had a horizontal stabilizer in the front and a vertical stabilizer in the rear. The pilot could control the wings via a wire, and lay on his stomach to fly the plane. The plane saw its first successful flight in 1903, at Kitty Hawk in America's North Carolina, and the Wright Flyer is generally considered to hold the title of the first powered, piloted aircraft in the world. This Papercraft Wright Flyer is about thirty four the size of the real wright flyer.

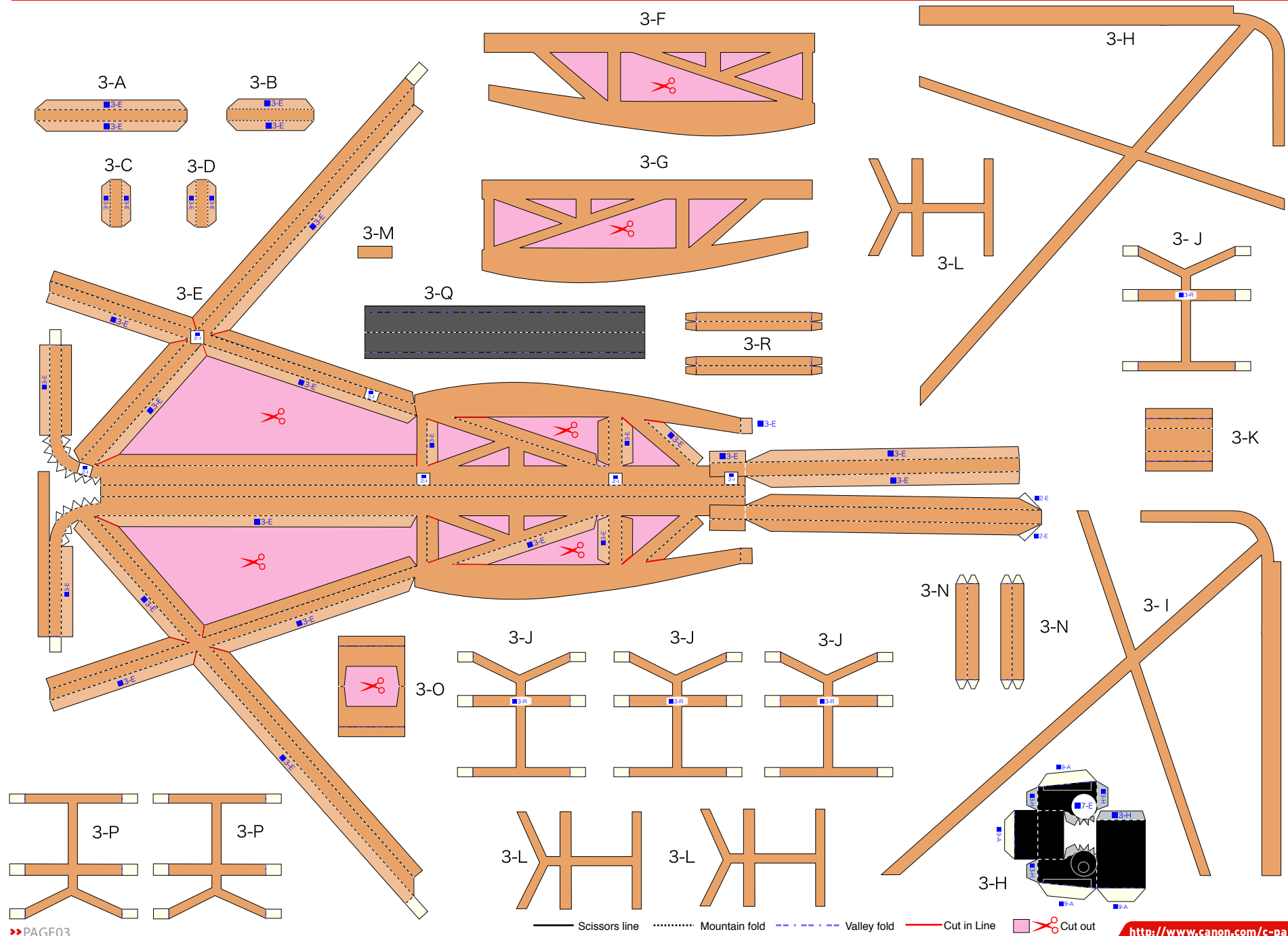
*This model was designed for Papercraft and may differ from the original in some respects.

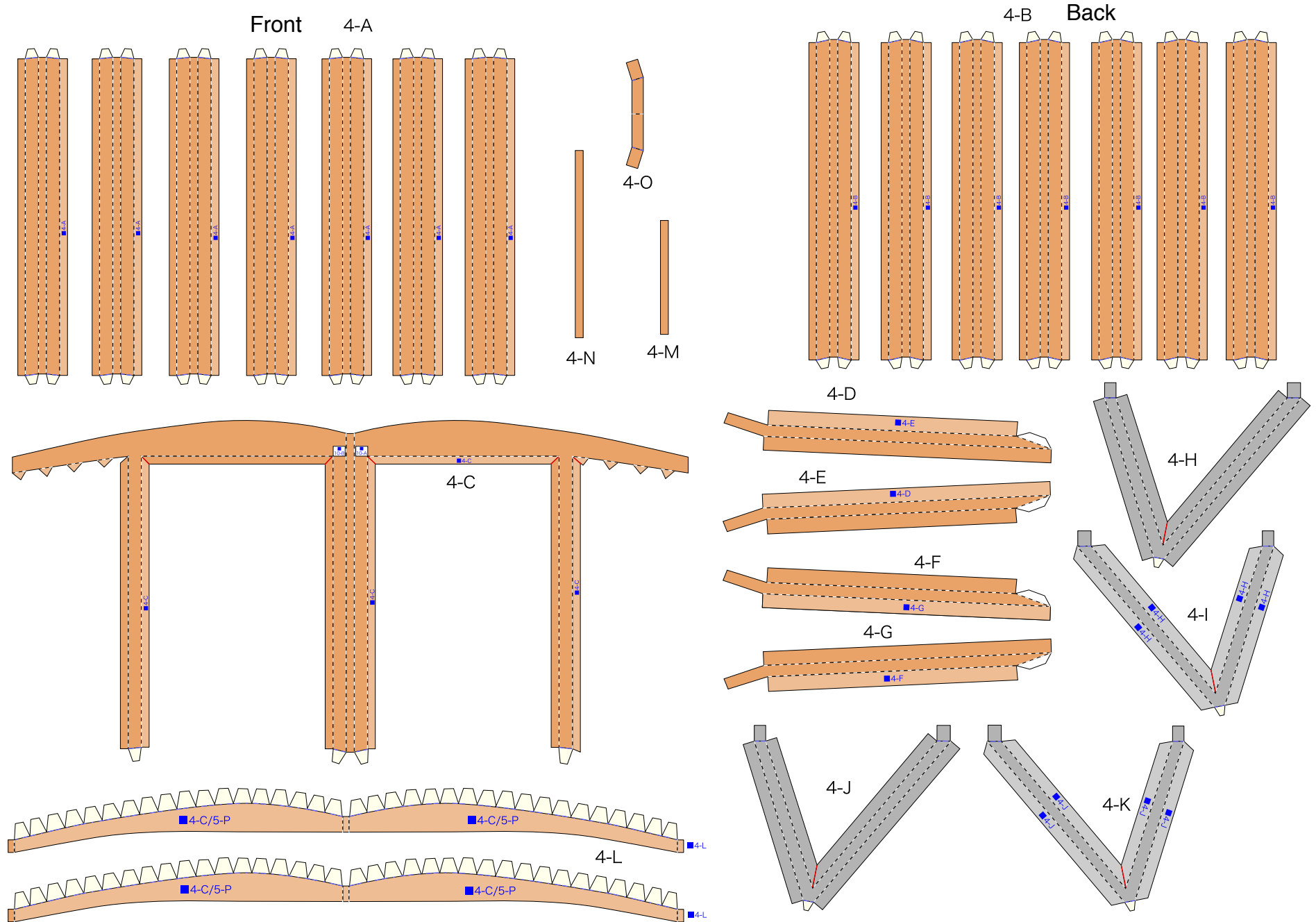
■ Parts list (Pattern) : Eleven A4 sheets (No.1 ~ No.11)

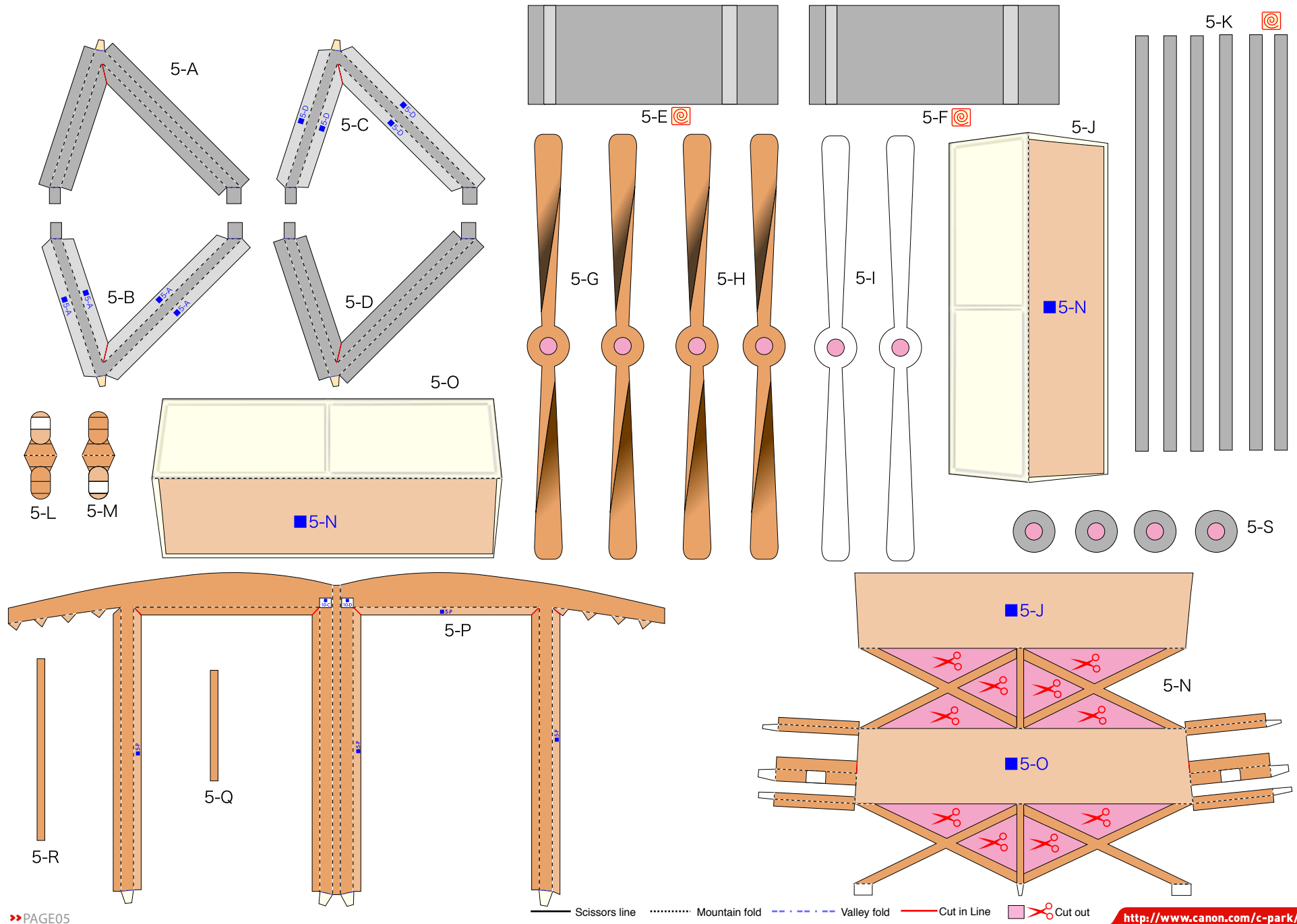
■ No. of Parts: 127

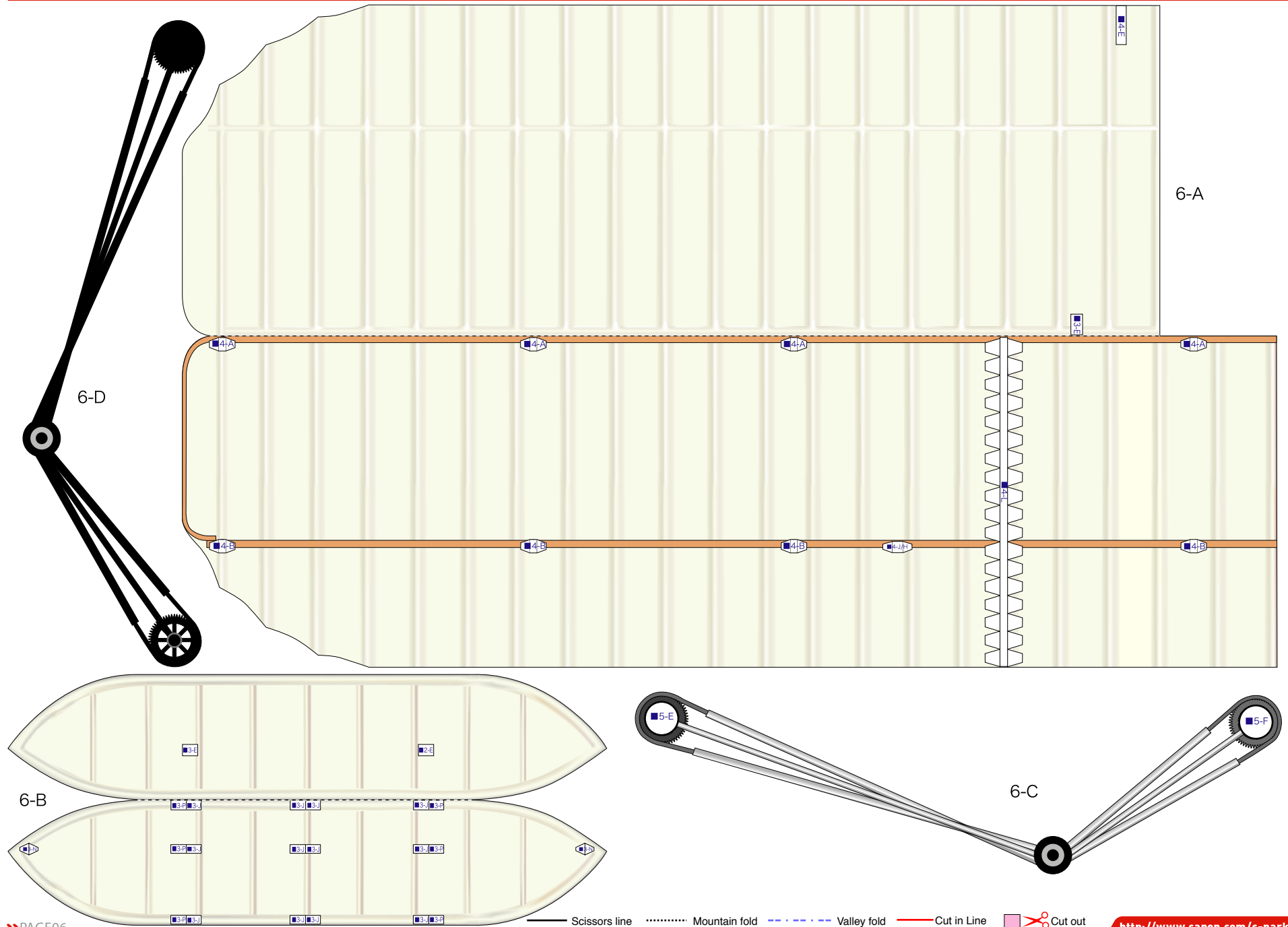
*Build the model by carefully reading the Assembly Instructions, in the parts sheet page order.

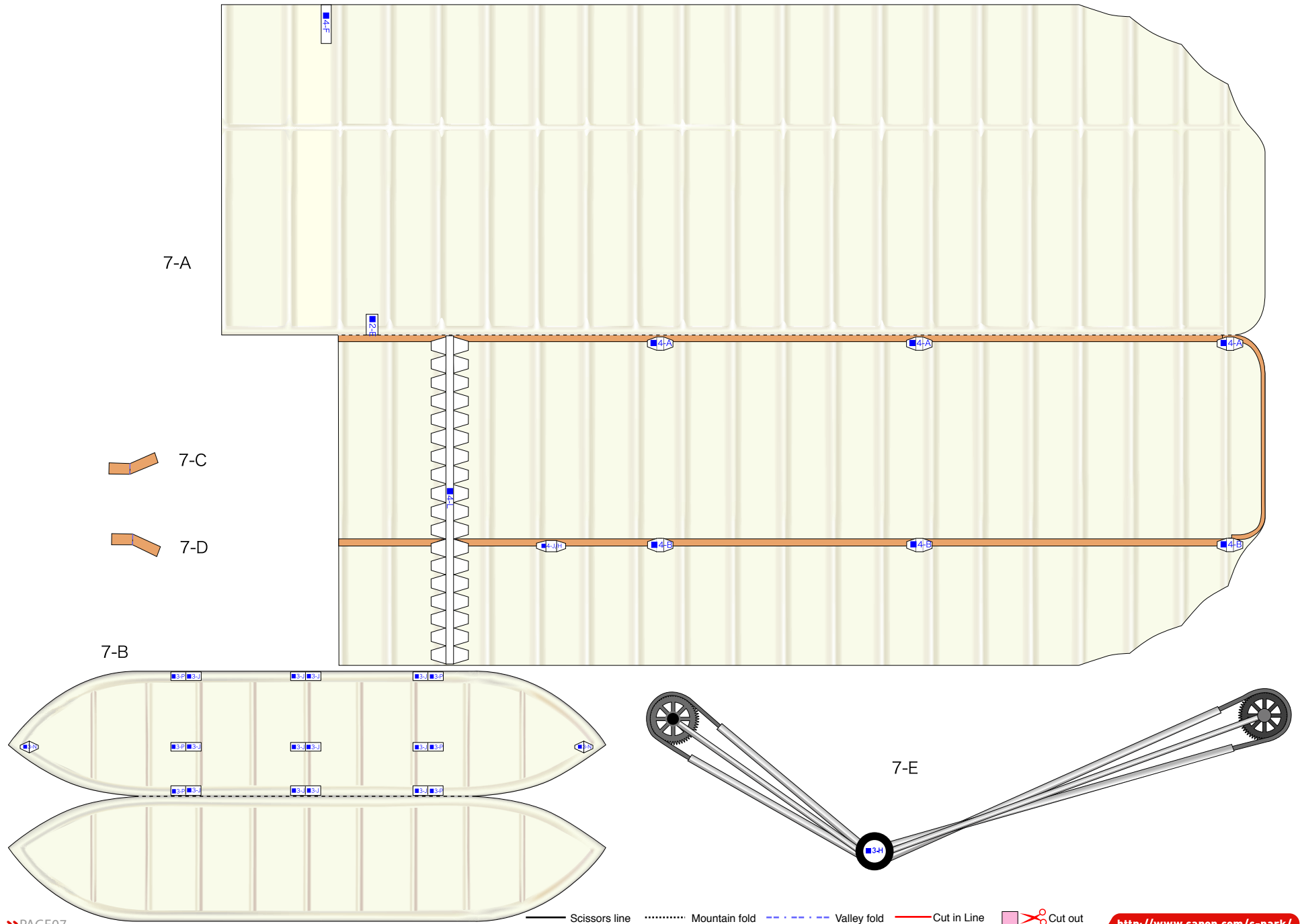




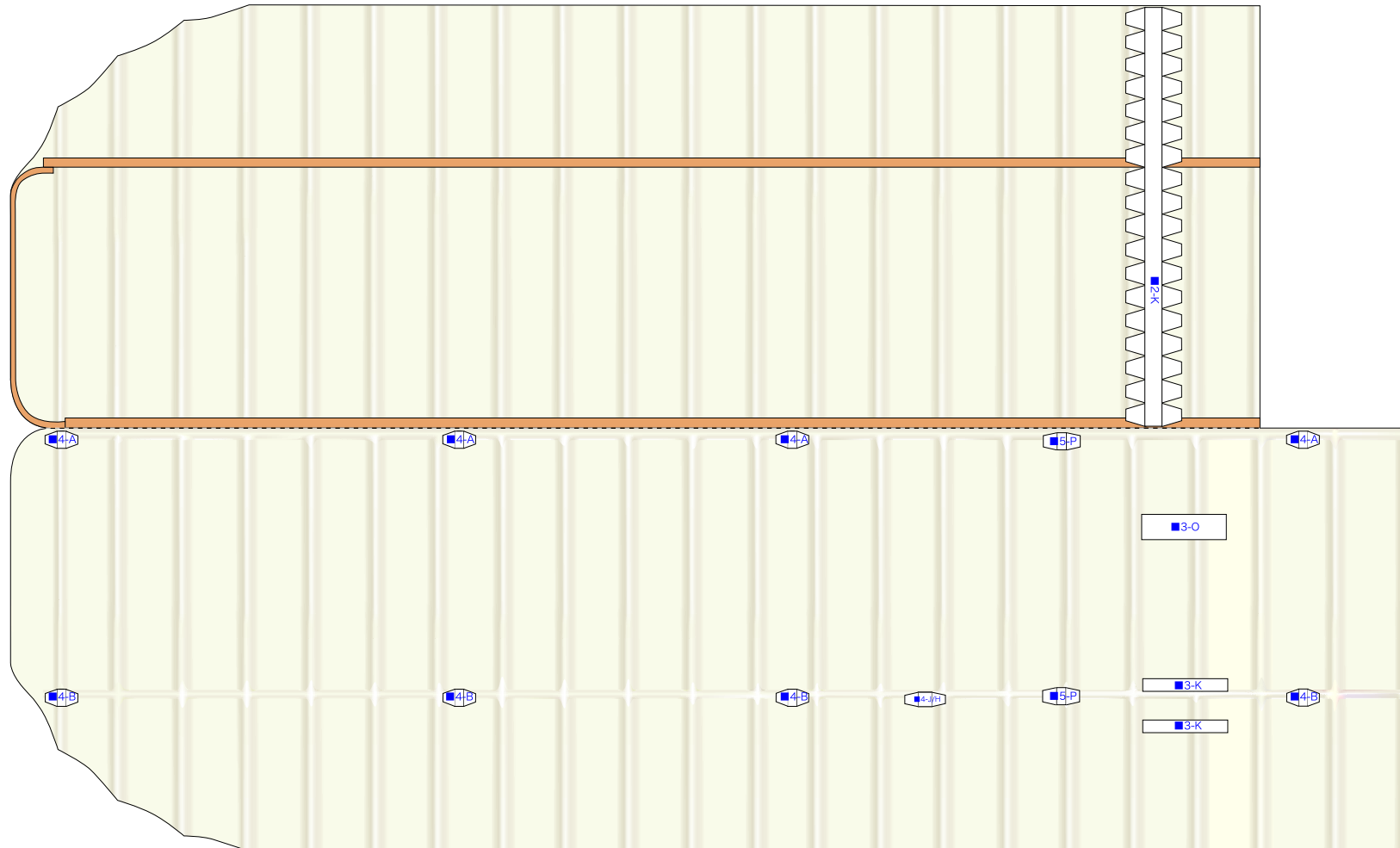


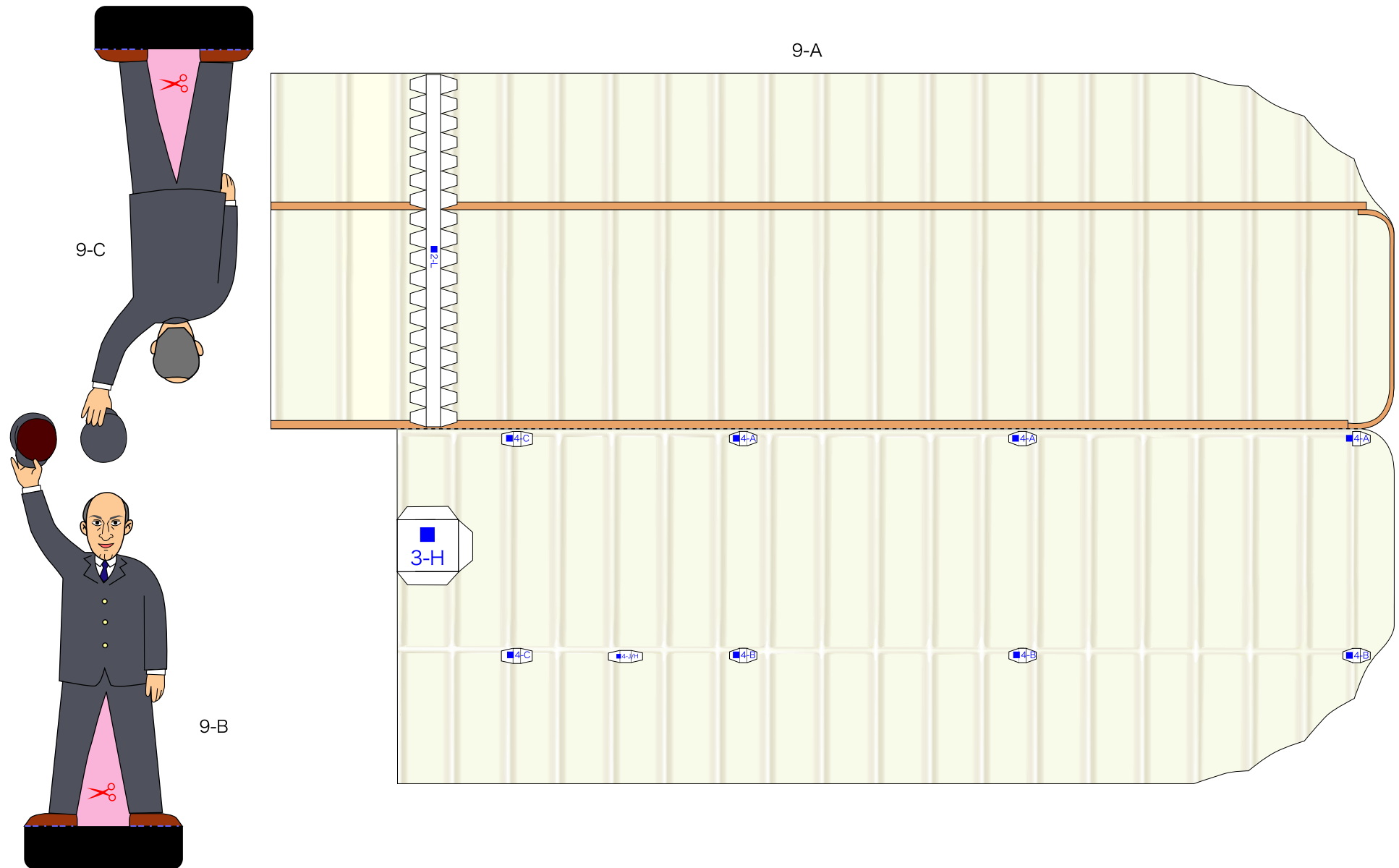


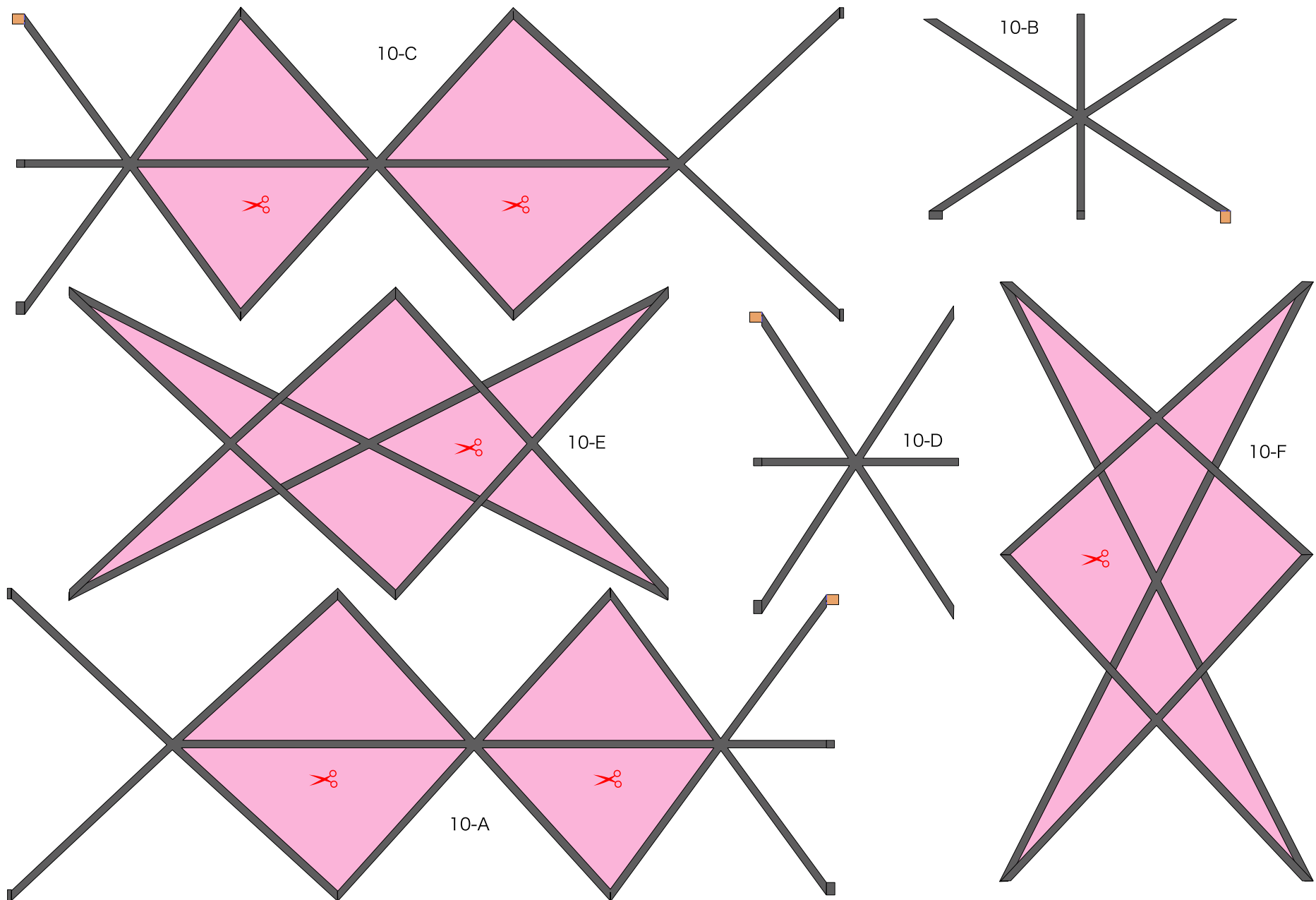


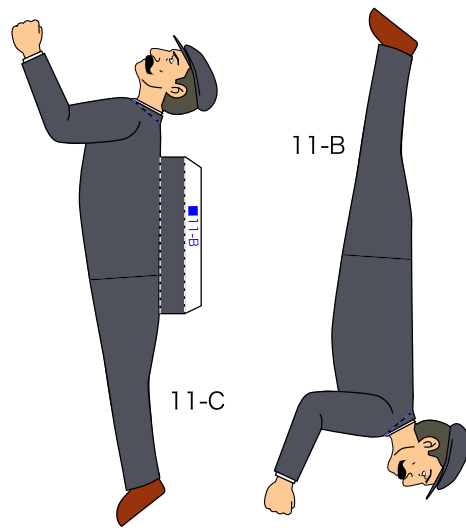


8-A









11-D

