

# Rainbow beetle: Assembly Instructions

Canon ® is a registered trademark of Canon Inc. © Canon Inc. © Y. Watanabe



## PAPER CRAFT

<http://www.canon.com/c-park/en/>

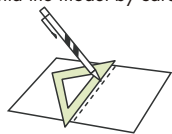


### View of completed model

\*This model was designed for Papercraft and may differ from the original in some respects.

### Assembly Instructions: Three A4 sheets (No. 1 to No. 3)

\*Build the model by carefully reading the Assembly Instructions, in the parts sheet page order.



\*Hint: Trace along the folds with a ruler and an exhausted pen (no ink) to get a sharper, easier fold.

### Assembly Instructions



**Mountain fold (dotted line)**  
Make a mountain fold.



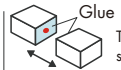
**Valley fold (dashed and dotted line)**  
Make a valley fold.



**Scissors line (solid line)**  
Cut along the line.



**Cut in line (solid line)**  
Cut along the line.



**Glue**  
The glue spot (colored dot) shows where to apply the glue.



**Glue spot (Red dot)**  
Glue parts with the same number together.



**Glue spot (Green dot)**  
Glue within the same part.



**Glue spot (Blue dot)**  
Glue to the rear of the other part.

#### Tools and materials



Scissors, set square, glue (We recommend stick glue), pencil, used ballpoint pen, toothpicks, tweezers, (useful for handling small parts)

#### Assembly tip



Before gluing, crease the paper along mountain fold and valley fold lines and make sure rounded sections are nice and stiff.

#### Caution



Glue, scissors and other tools may be dangerous to young children so be sure to keep them out of the reach of young children.

Before starting assembly: Writing the number of each section on its back side before cutting out the sections is highly recommended. (\* This way, you can be sure which section is which even after cutting out the sections.)

→ Indicates where sections should be glued together.

Assemble Parts 7-9 in the same manner.

Do not glue this area.

Assemble Parts 10-12 in the same manner.

Assemble Parts 13-15 in the same manner.

Do not glue this area.

Assemble Parts 16-18 in the same manner.

Assemble Parts 19-21 in the same manner.

Do not glue this area.

Assemble Parts 22-24 in the same manner.

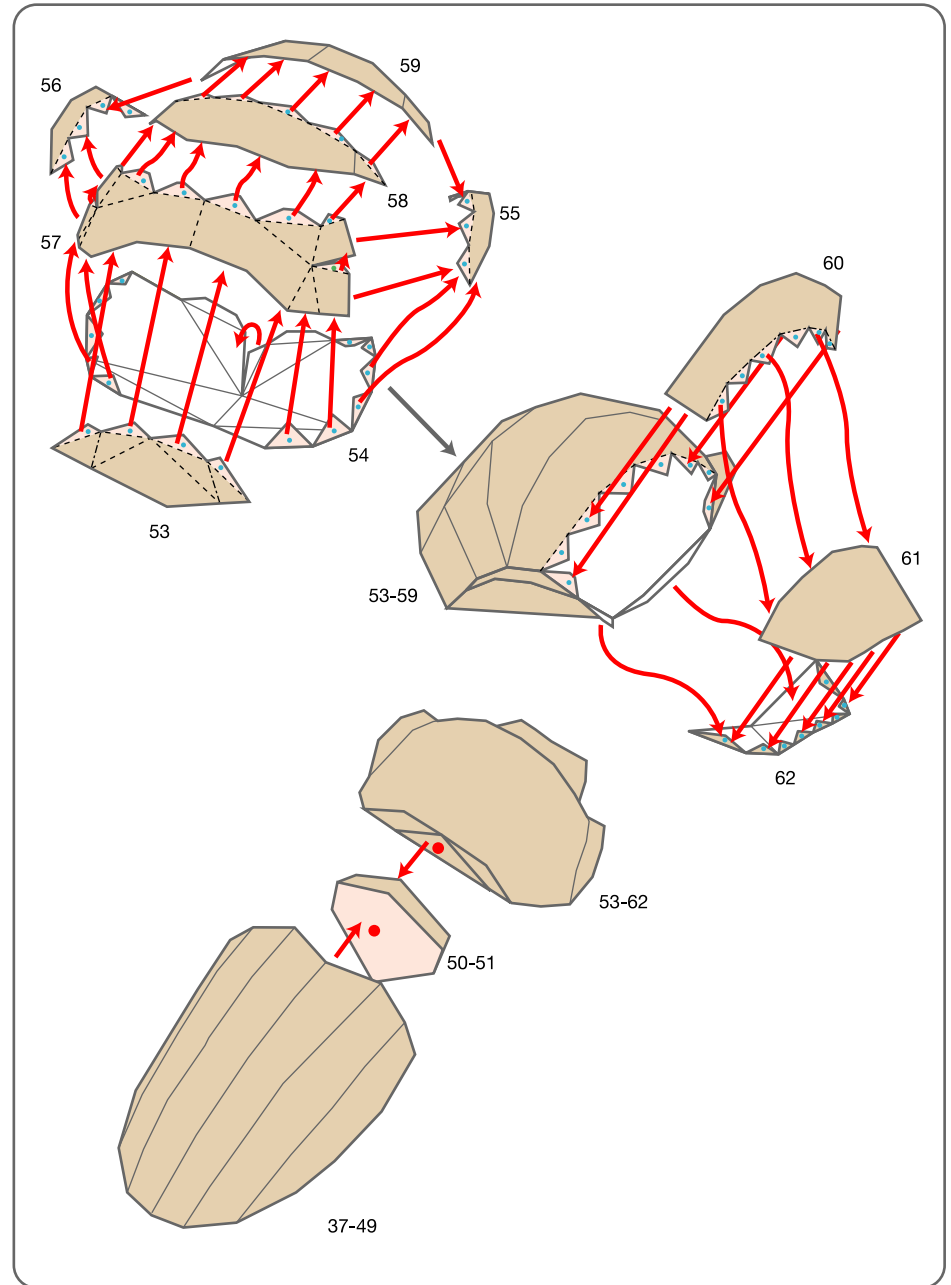
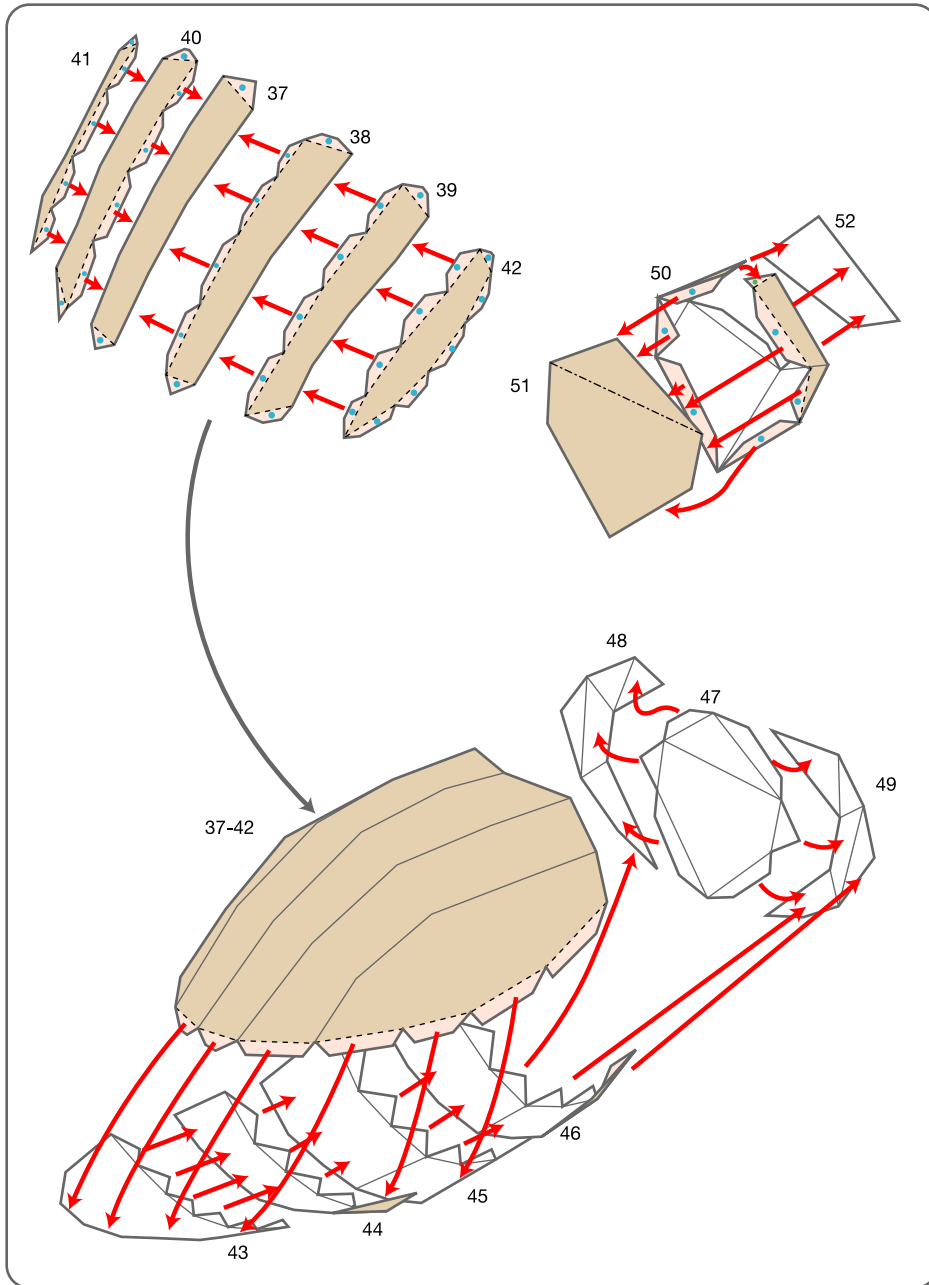
Assemble Parts 25-27 in the same manner.

Assemble Parts 28-30 in the same manner.

Assemble Parts 31-33 in the same manner.

# Rainbow beetle: Assembly Instructions

Canon ® is a registered trademark of Canon Inc. © Canon Inc. © Y. Watanabe



# Rainbow beetle: Assembly Instructions

Dark-colored Parts 1, 7, 15, 21, 27, and 31 form the backsides of the legs.

Once the glue is completely dry, glue the overlap of all legs as shown in the above figure.

After gluing all legs, bend the joints while referring to the fully assembled picture on Page 1.

Finished!