



\*These maracas come in a set of two.

Round maraca



Thin maraca



Maracas are percussion instruments that belong to the group of instruments called "idiophones." They consist of a hollow sphere with a handle that fits easily in one's hand, and they have small beads inside that make noise when the maracas are shaken. Two maracas of varying pitch are usually played together, one held in each hand. Maracas were originally made from gourds known as "maracas," but they are now usually made from wood.

These maracas come in a set of two. Try putting the bits of paper provided, or small items such as beads or seeds inside. Have fun experimenting with different sounds as you change the items or their amounts!

#### Assembly Instructions

- 1 : Carefully cut out the parts.
- 2 : Fold along the dotted lines, making mountain or valley folds as indicated.
- 3 : Follow the order indicated in the instructional diagrams, and attach the parts to assemble.
- 4 : Assemble all the pieces together, and you're done!
- 5 : Have fun making music!

#### Tools

Scissors, glue (We recommend craft glue.)

Small, lightweight noise-making items  
(beads, flower seeds, gravel, etc)

#### Caution

- Keep glue away from small children.
- Be careful not to cut your fingers when using scissors.
- Be careful not to cut yourself on the edges of the paper.
- The maracas are reinforced to an extent, but if you squeeze the handles too tightly they may get crushed. Also if you shake them too vigorously the handles may bend or break.
- Please take care as this craft uses small items such as beads or seeds which are a choking hazard to small children.
- Please take care in terms of hygiene if using gravel or seeds. Do not use anything heavy.

#### Explanation of Symbols



Solid line : Scissors line



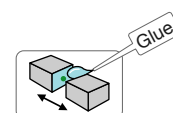
Mountain fold



Red solid line : Cut in line



Valley fold

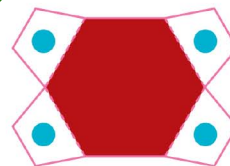


The glue spot (colored dot)  
shows where to apply the glue.

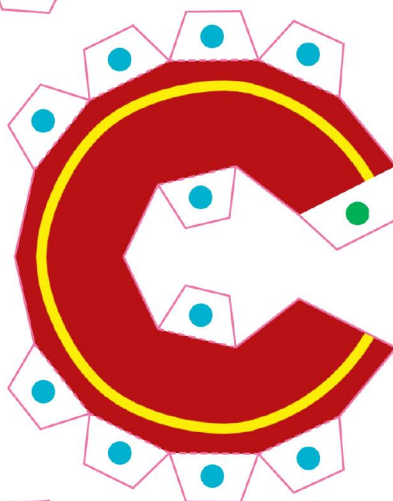
● Glue spot (Green dot)  
Glue within the same part.

● Glue spot (Blue dot)  
Glue to the rear of the other part.

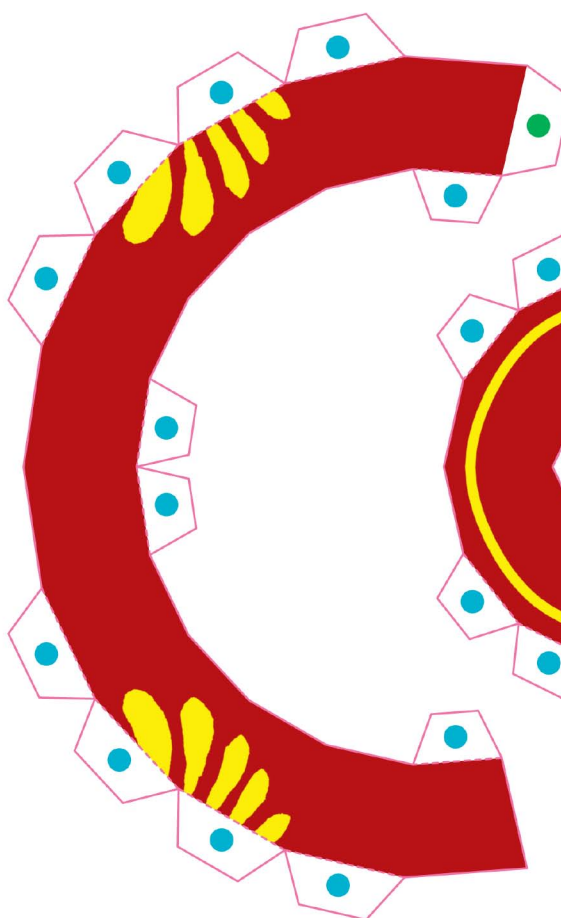
A-1



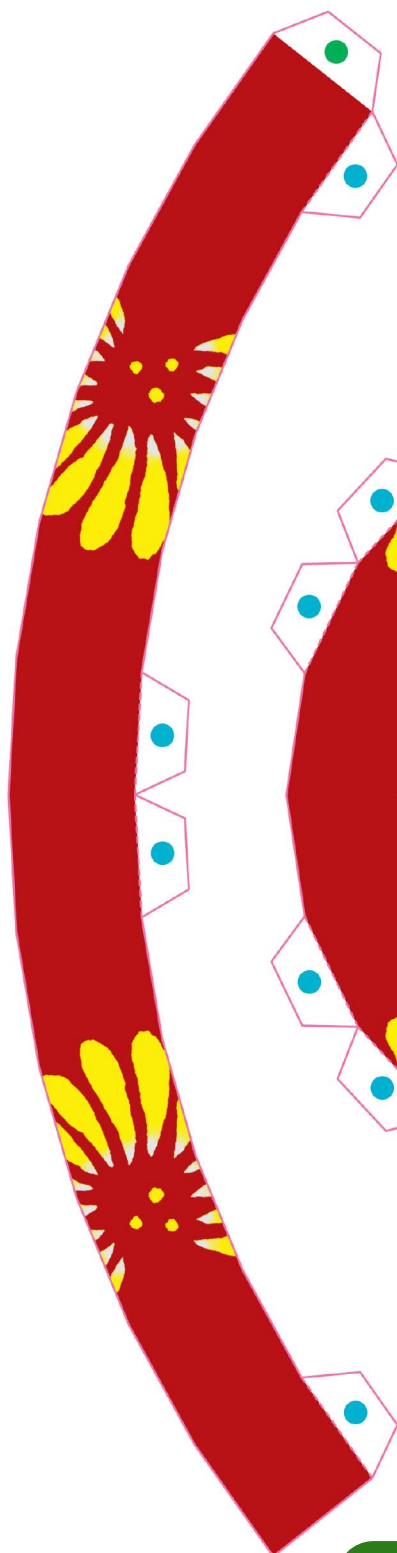
A-2



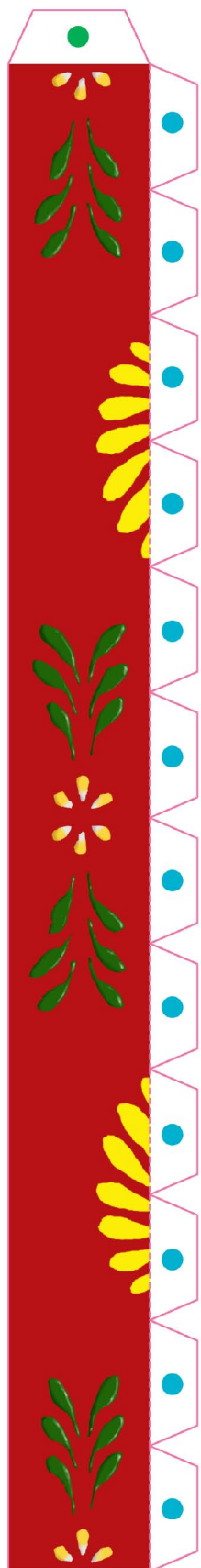
A-3

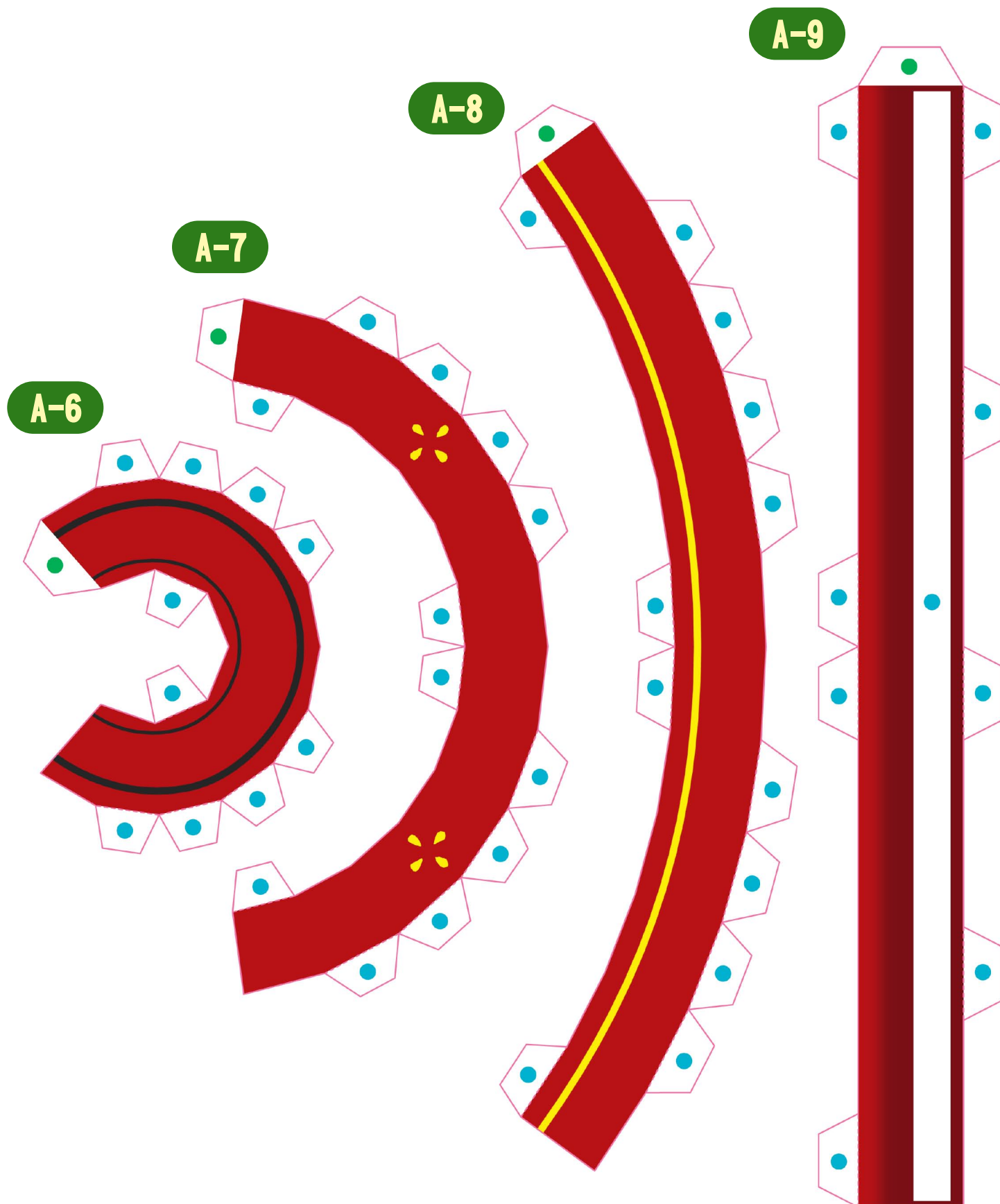


A-4

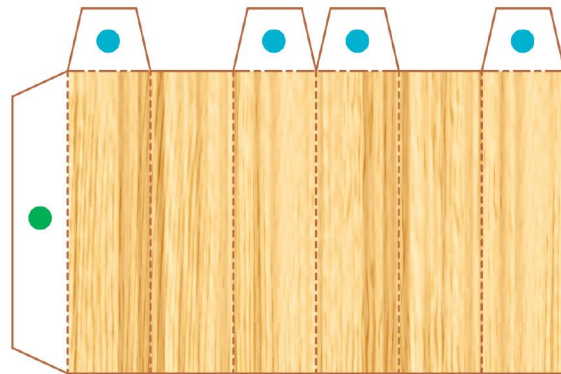


A-5

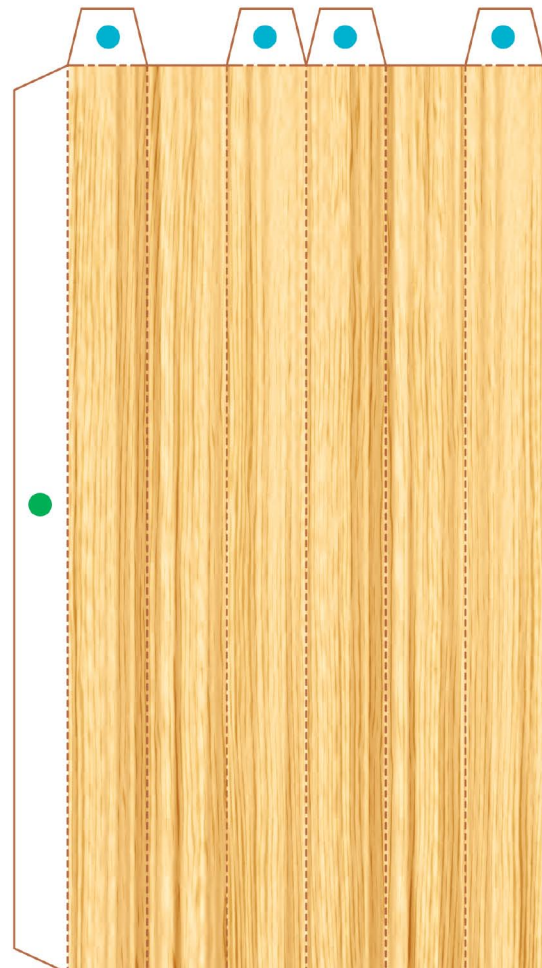




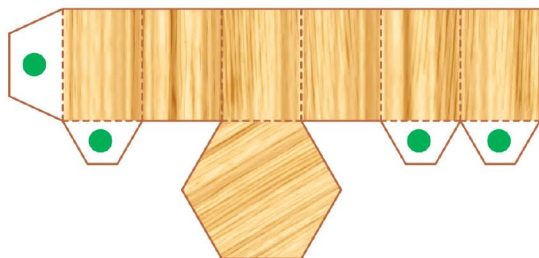
A-10

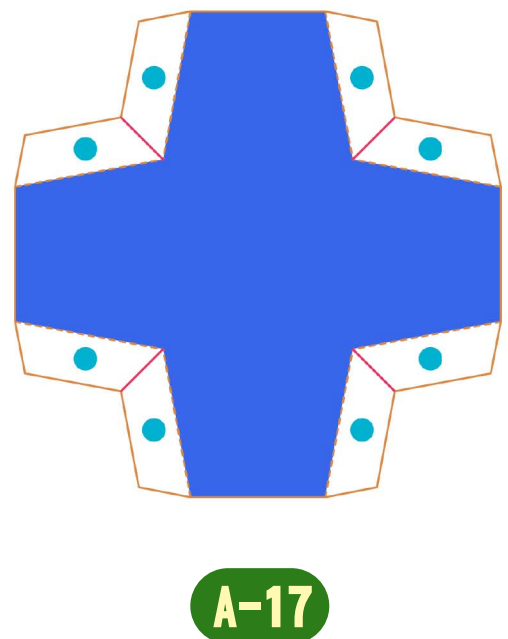
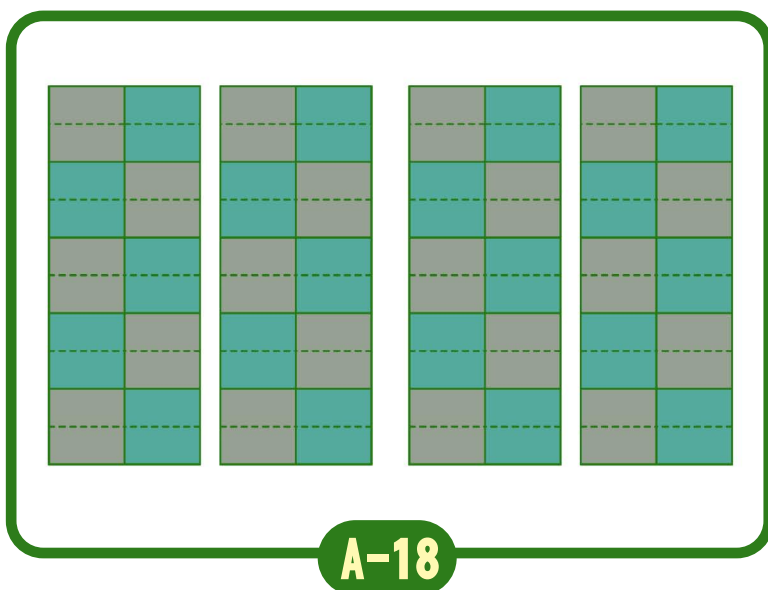
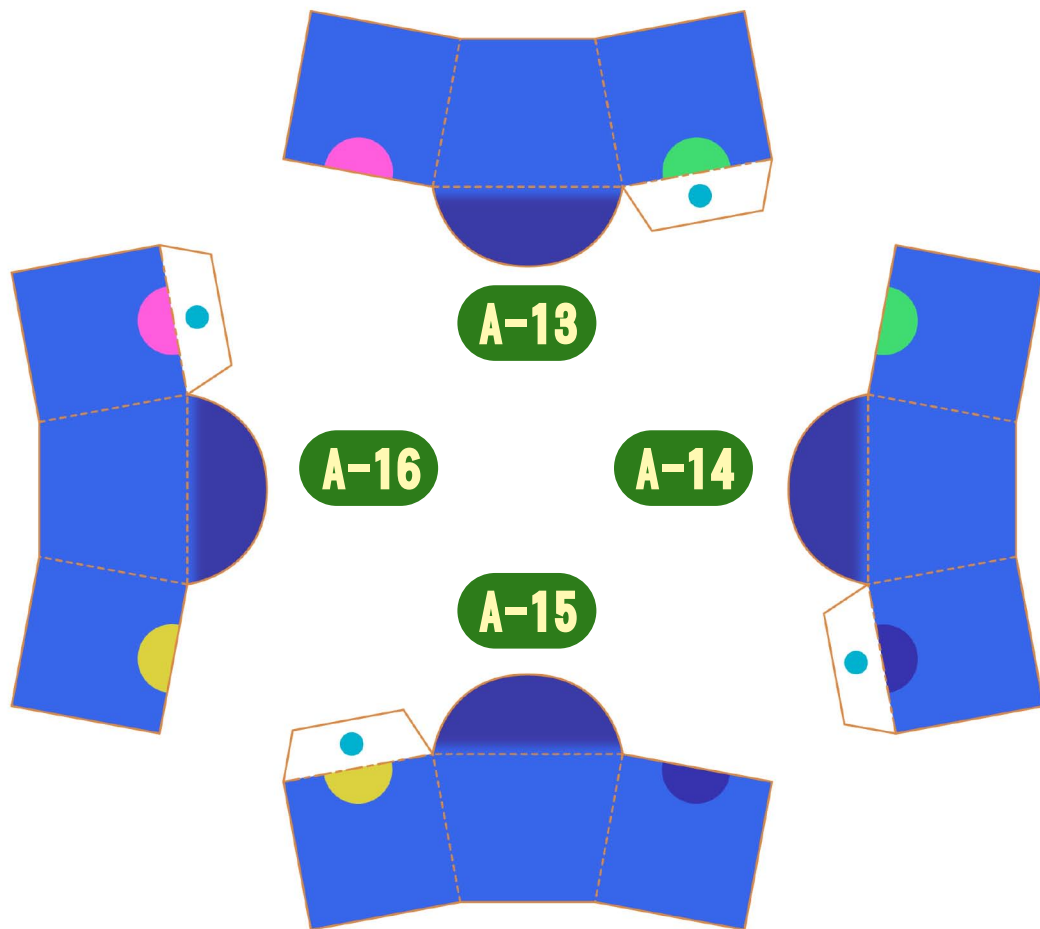


A-11

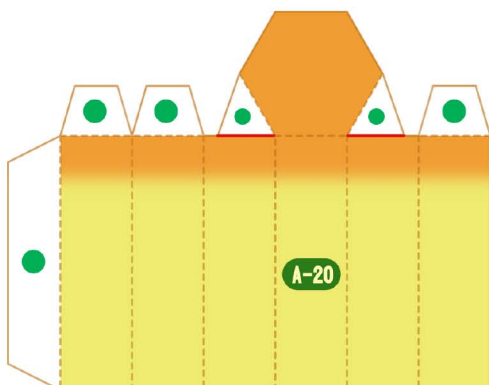


A-12

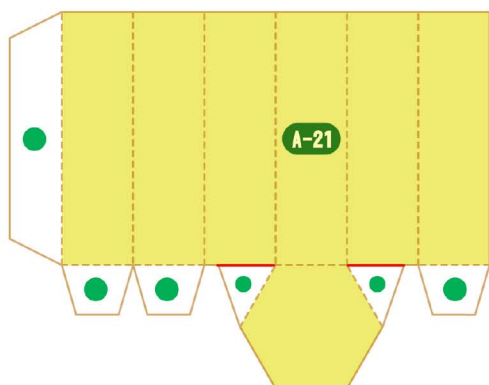




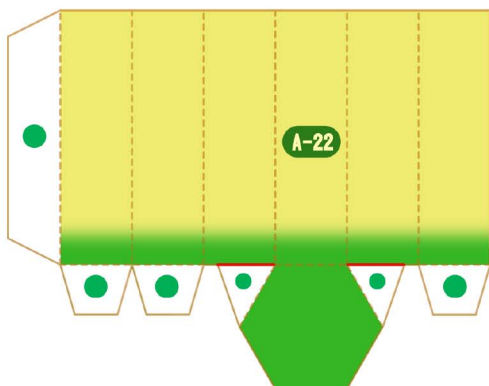
A-20



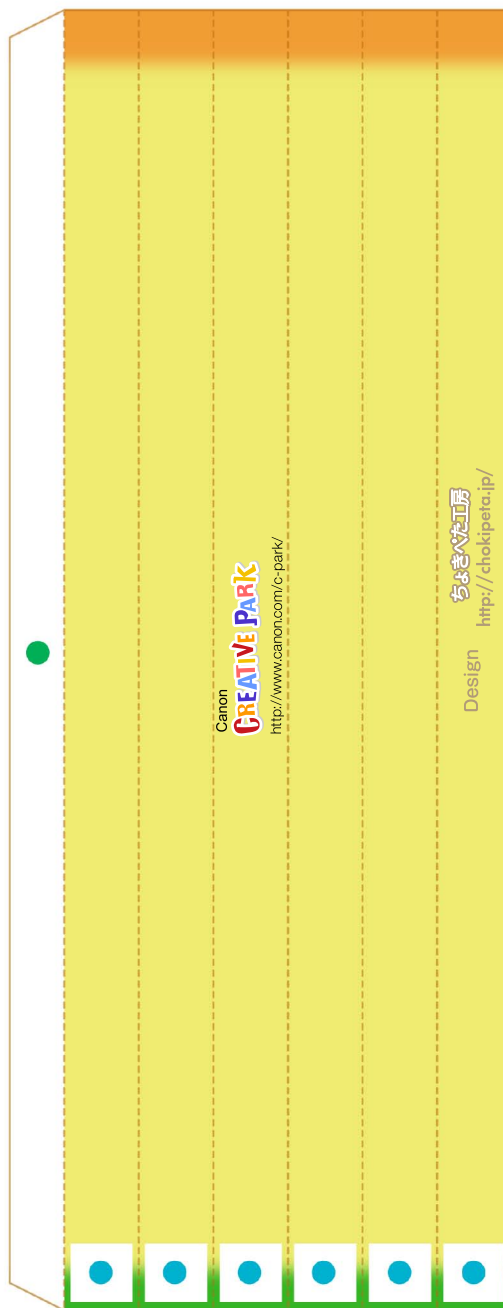
A-21

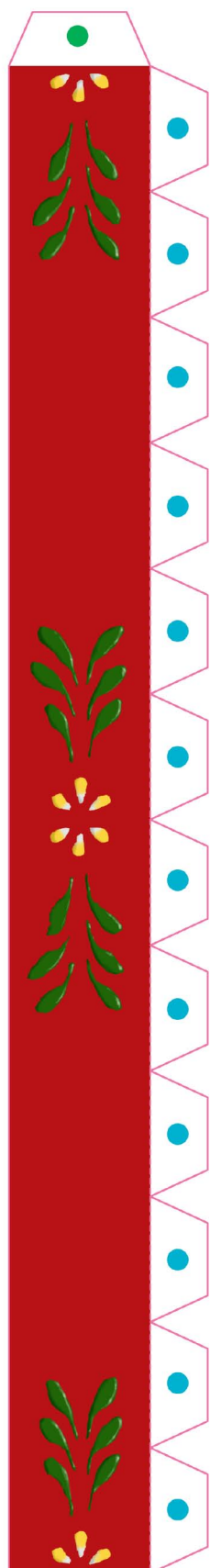


A-22

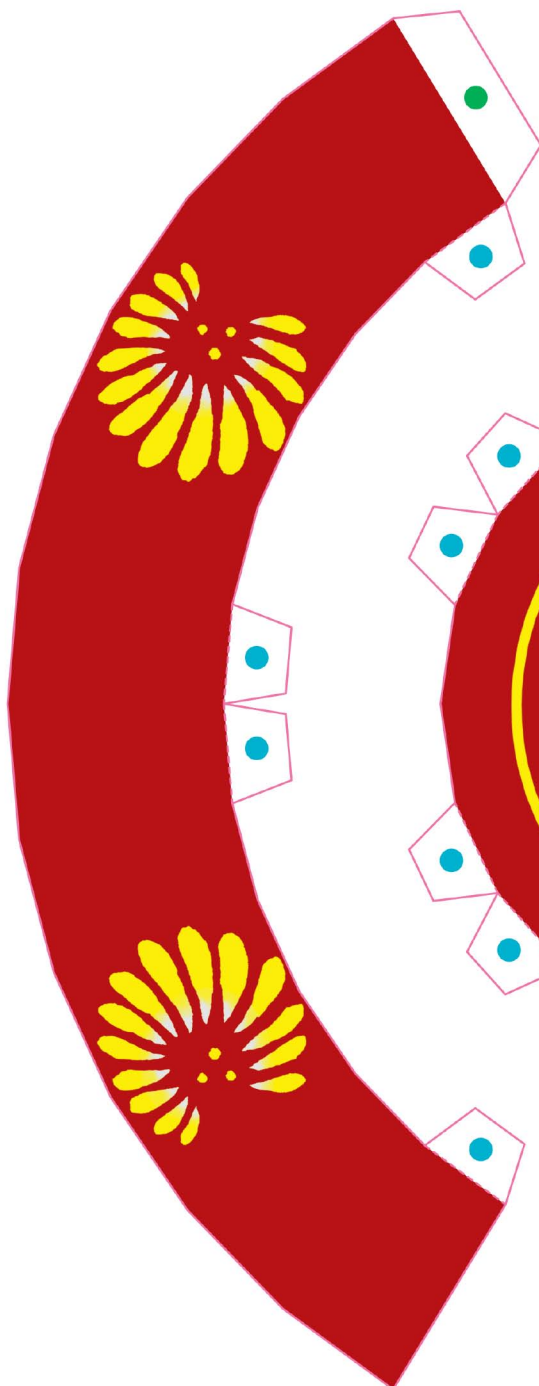


A-19

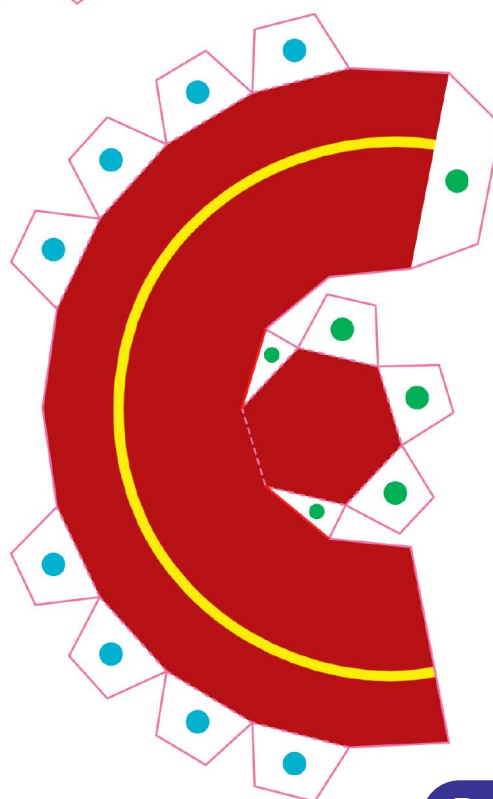




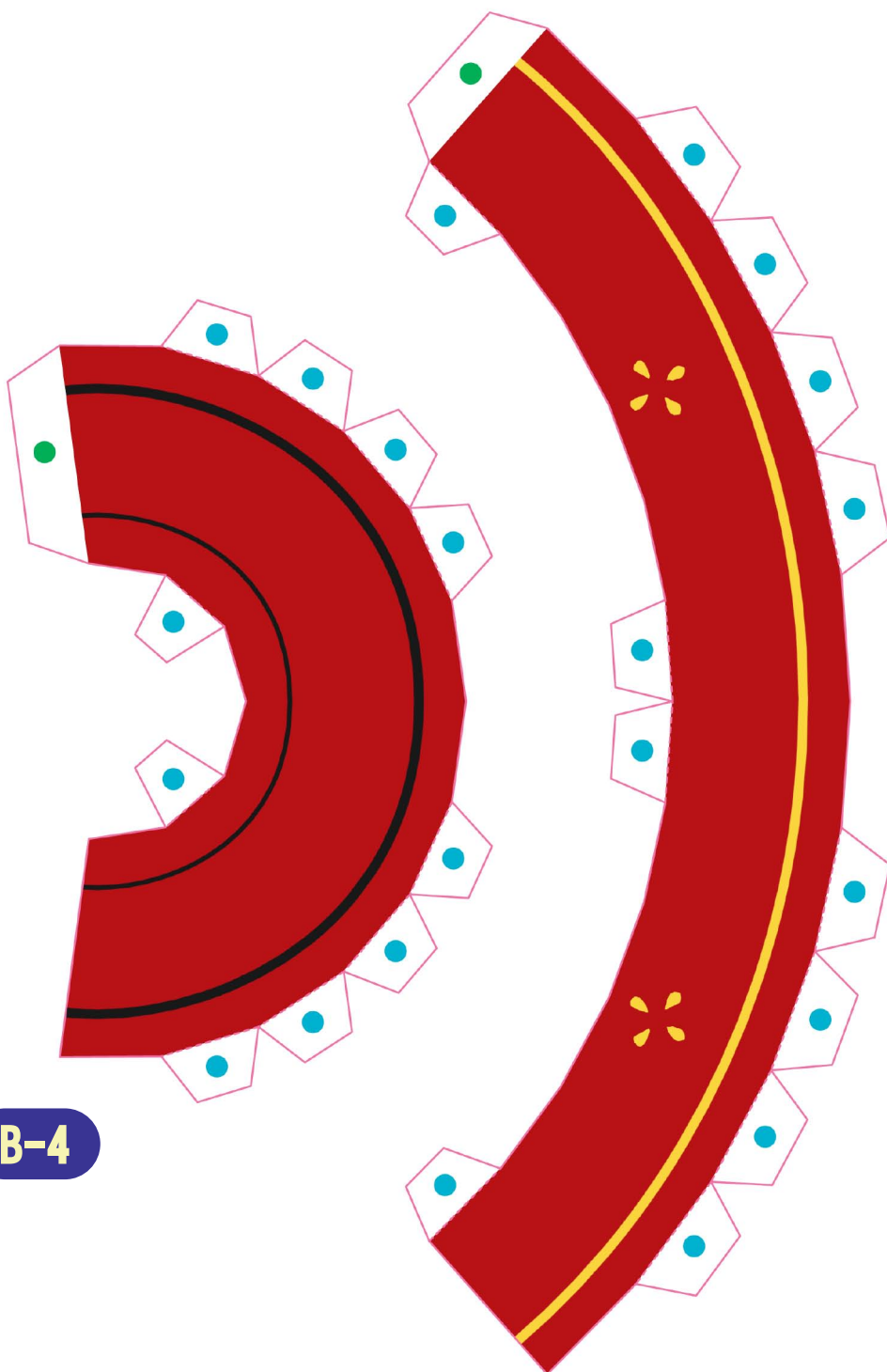
B-3



B-2

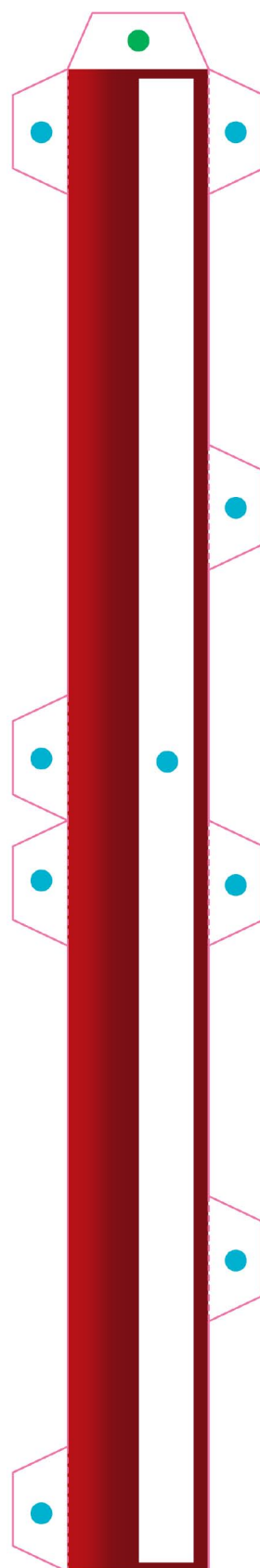


B-1



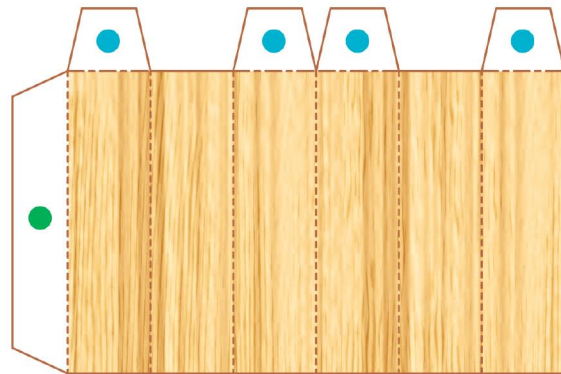
B-4

B-5

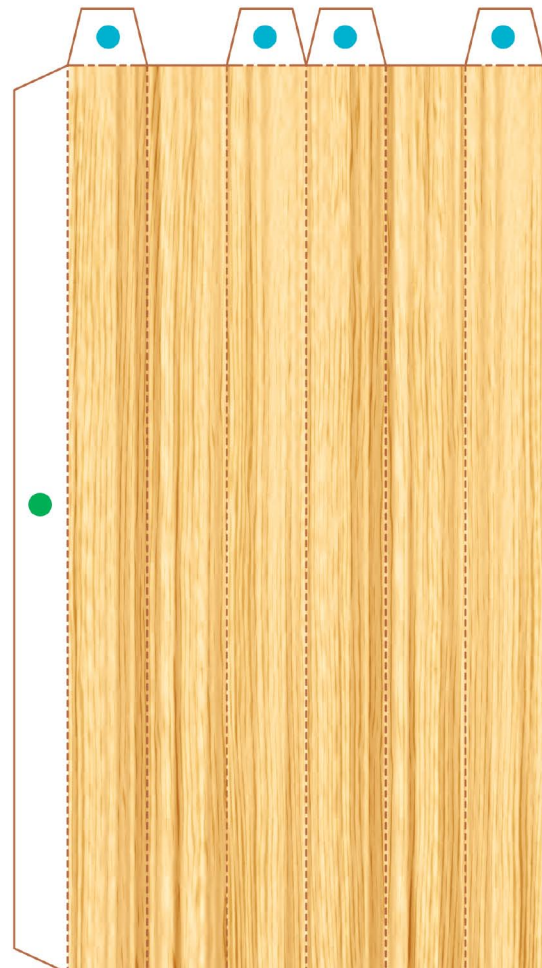


B-6

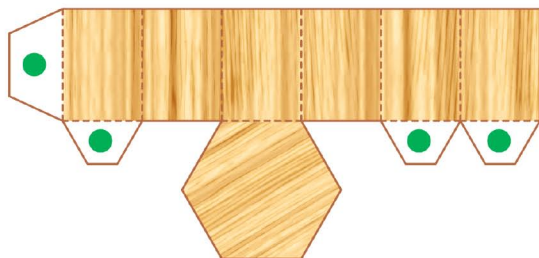
B-7

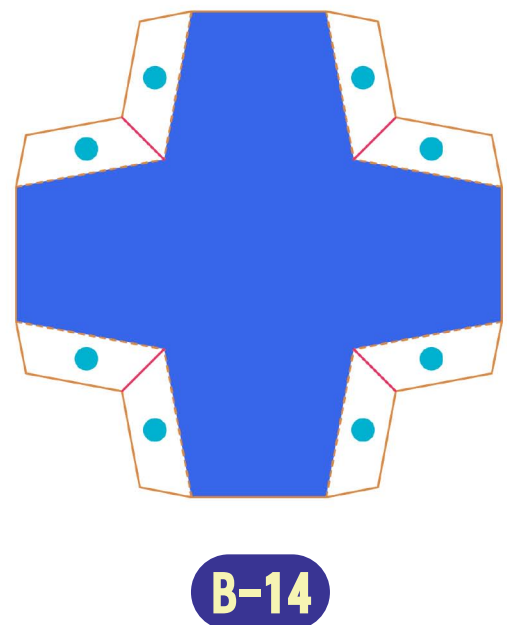
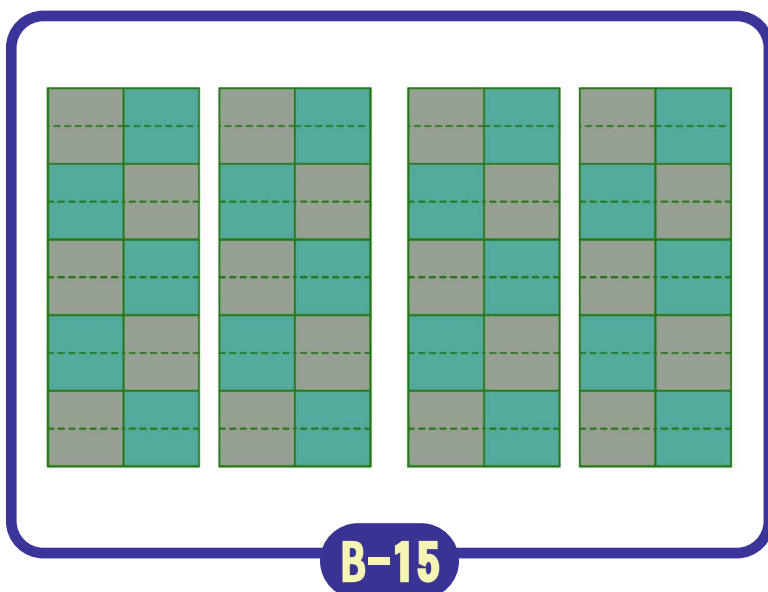
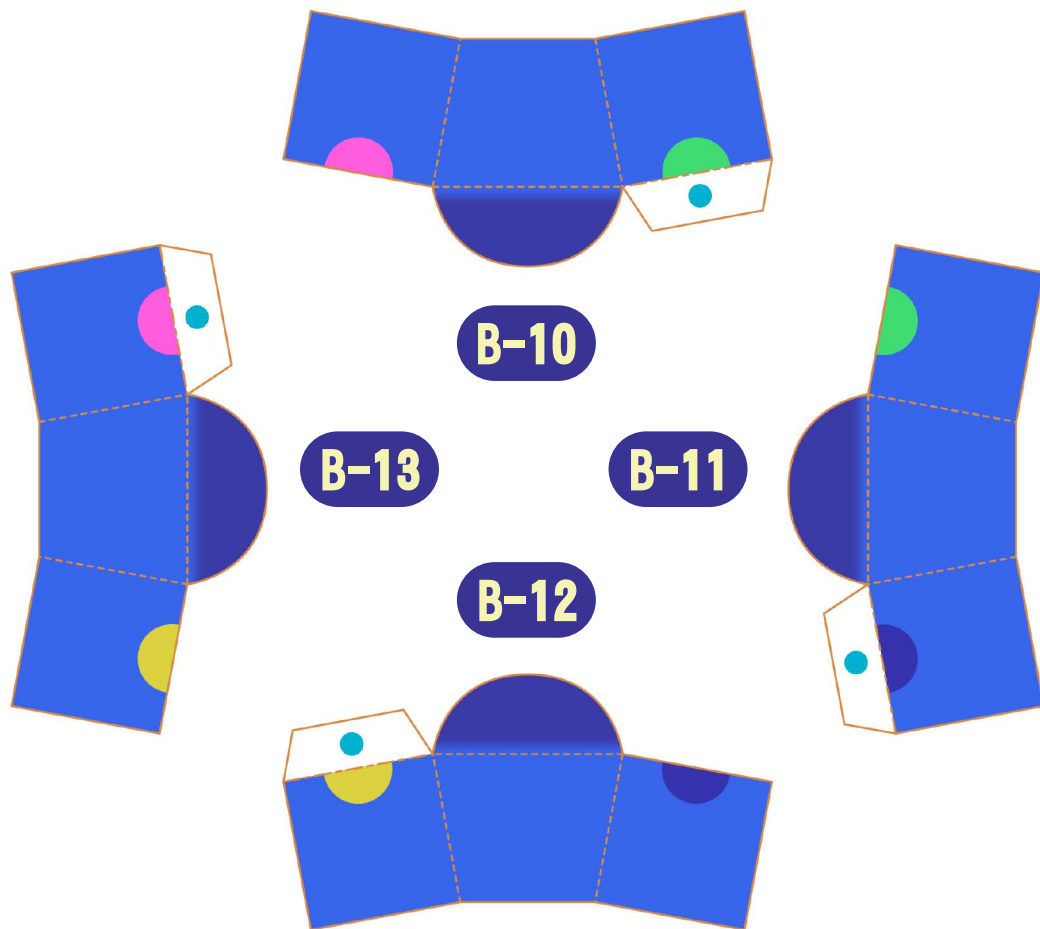


B-8

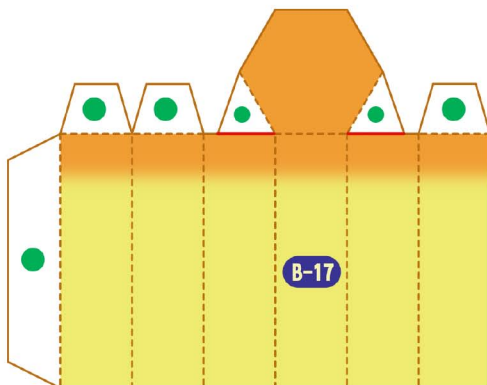


B-9



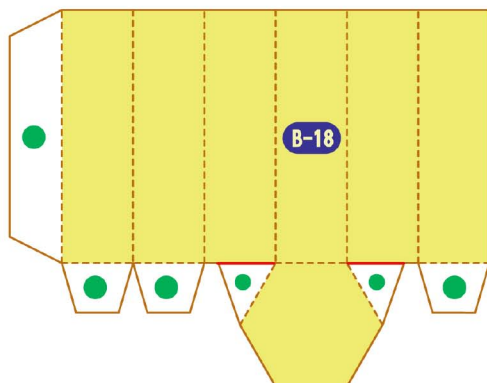


B-17



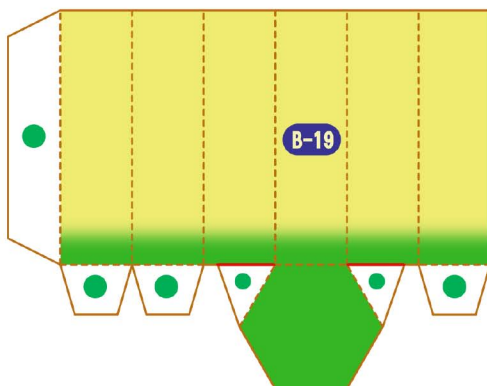
B-17

B-18



B-18

B-19



B-19



B-16

Canon  
CREATIVE PARK  
<http://www.canon.com/c-park/>

Design  
ちよきん工房  
<http://chokipeta.jp/>