



CREATIVE PARK

<http://www.canon.com/c-park/>



View of completed model

Ships of the world : Esmeralda

- Esmeralda : built in 1953; 3,673 tons; four masts; barkentine; total length of 113 m; Chile

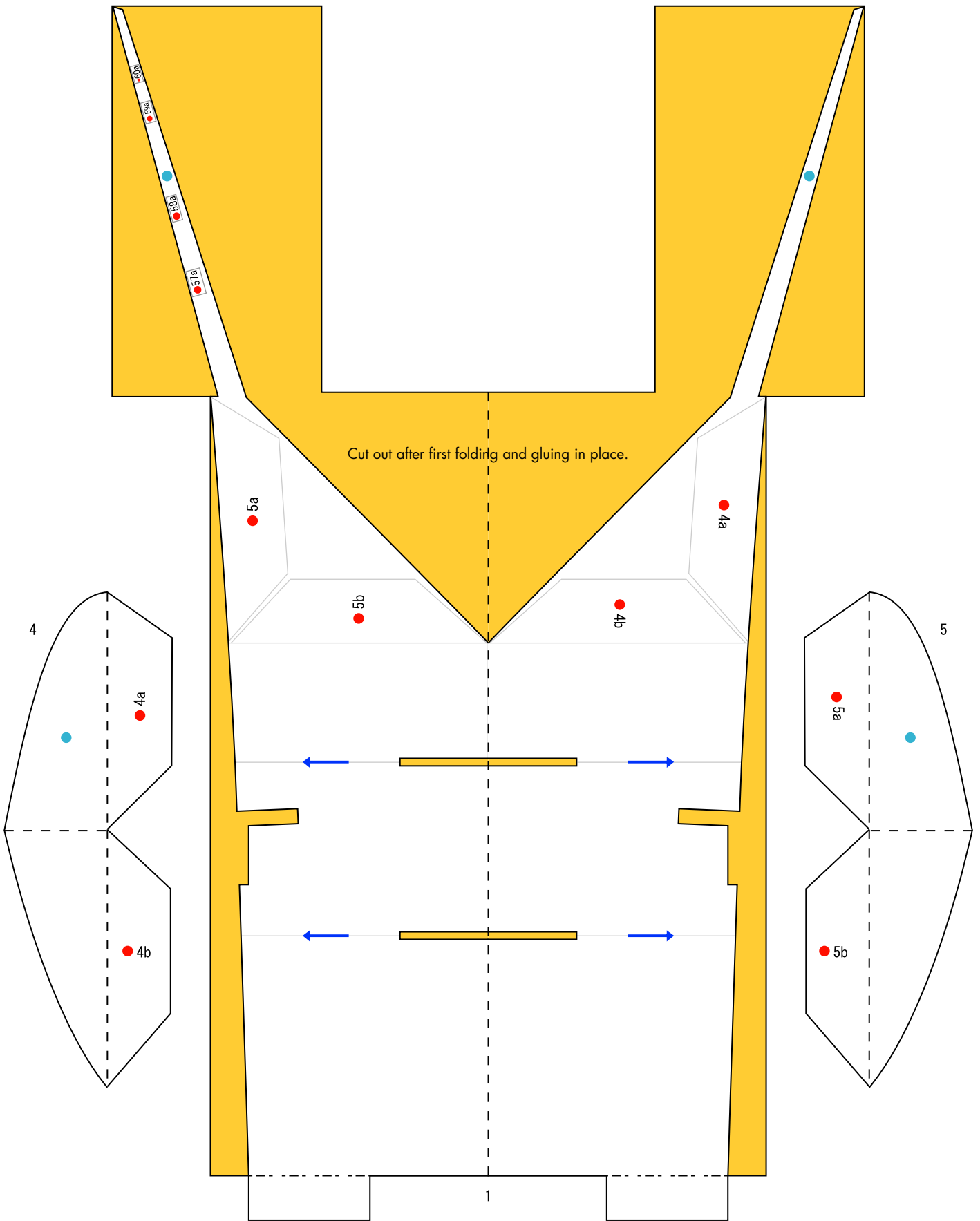
The Esmeralda, a Chilean navy training vessel said to be one of the most beautiful ships in the world, is familiar to ship fans around the world by her nickname "the White Lady." However, the vessel has a troubled history. Shipbuilding on the Esmeralda, planned as a training vessel for the Spanish navy, first began in 1946. However, after an explosion the following year she remained unrepaired for several years, due to worsening economic conditions and other factors. Shipbuilding later resumed when it was decided that the Esmeralda would be transferred to Chile for purposes of debt repayment. In 1953 she was finally launched before a sea of onlookers, and has since sailed the waters of the world.

* This model was designed for Papercraft and may differ from the original in some respects.

■ Parts list (pattern) : Nineteen A4 sheets (No. 1 to No. 19)

■ No. of Parts : 127 (Including 15 optional parts)

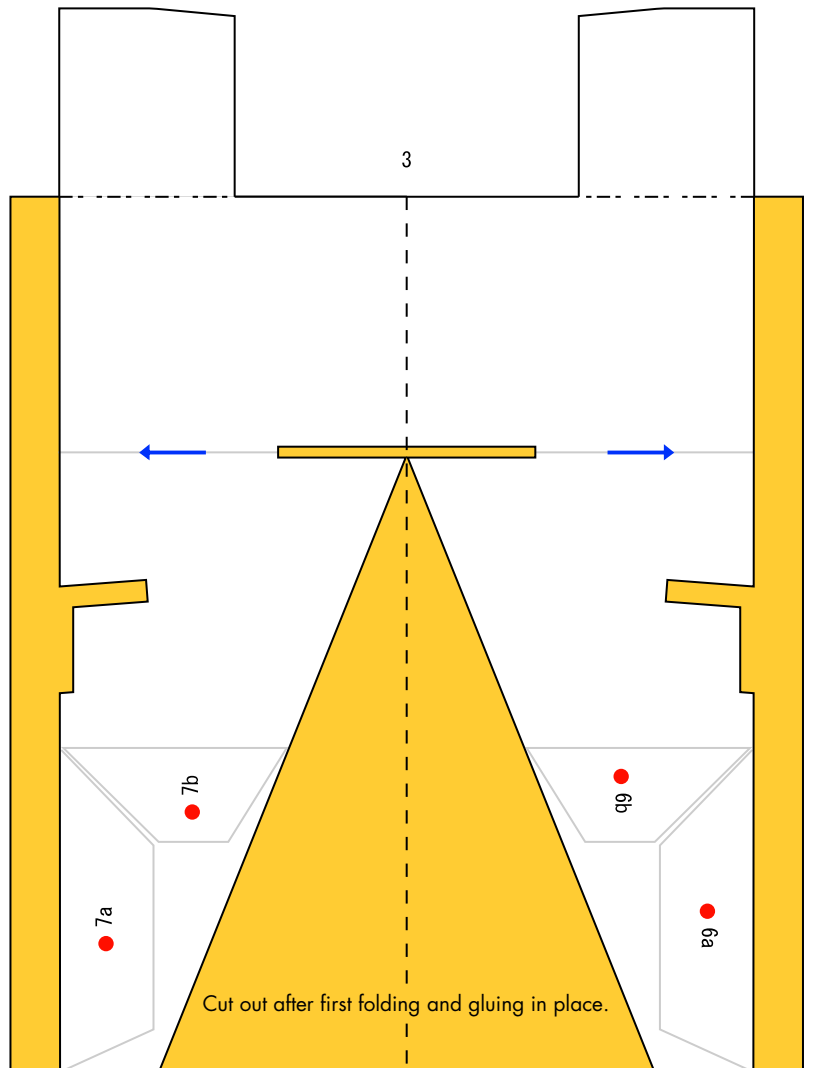
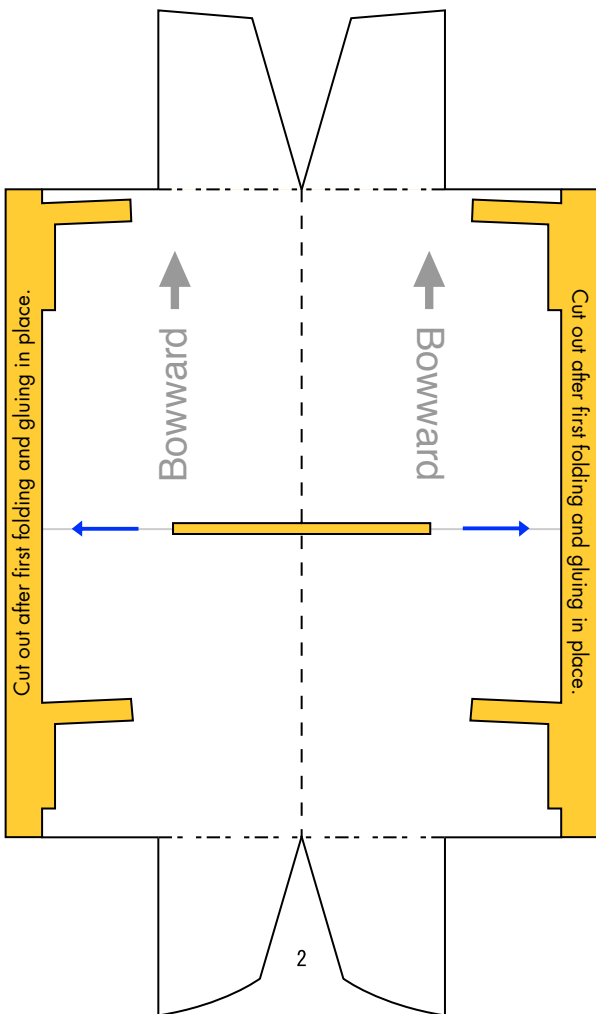
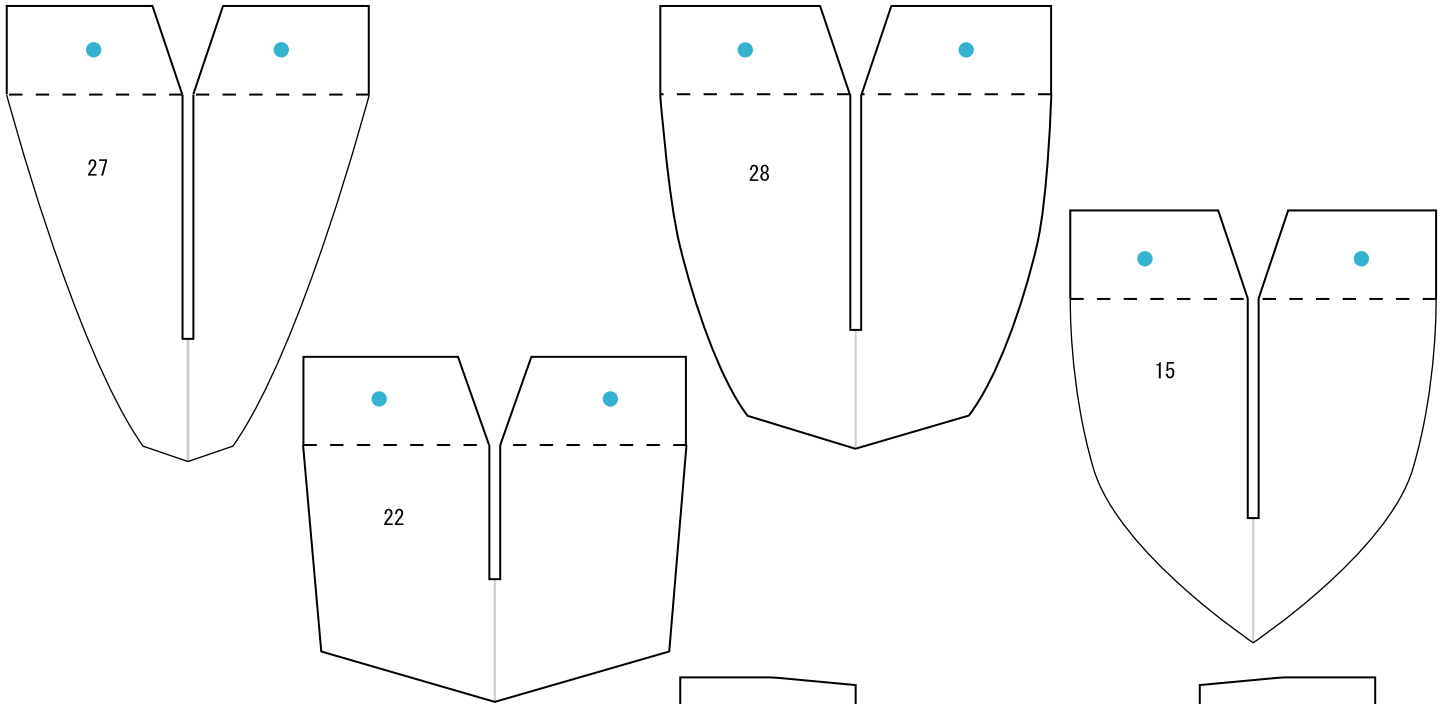
* Build the model by carefully reading the Assembly Instructions, in the parts sheet page order.





Ships of the world : Esmeralda : Pattern

© Canon Inc. © M. Nishiguchi/SENAUN

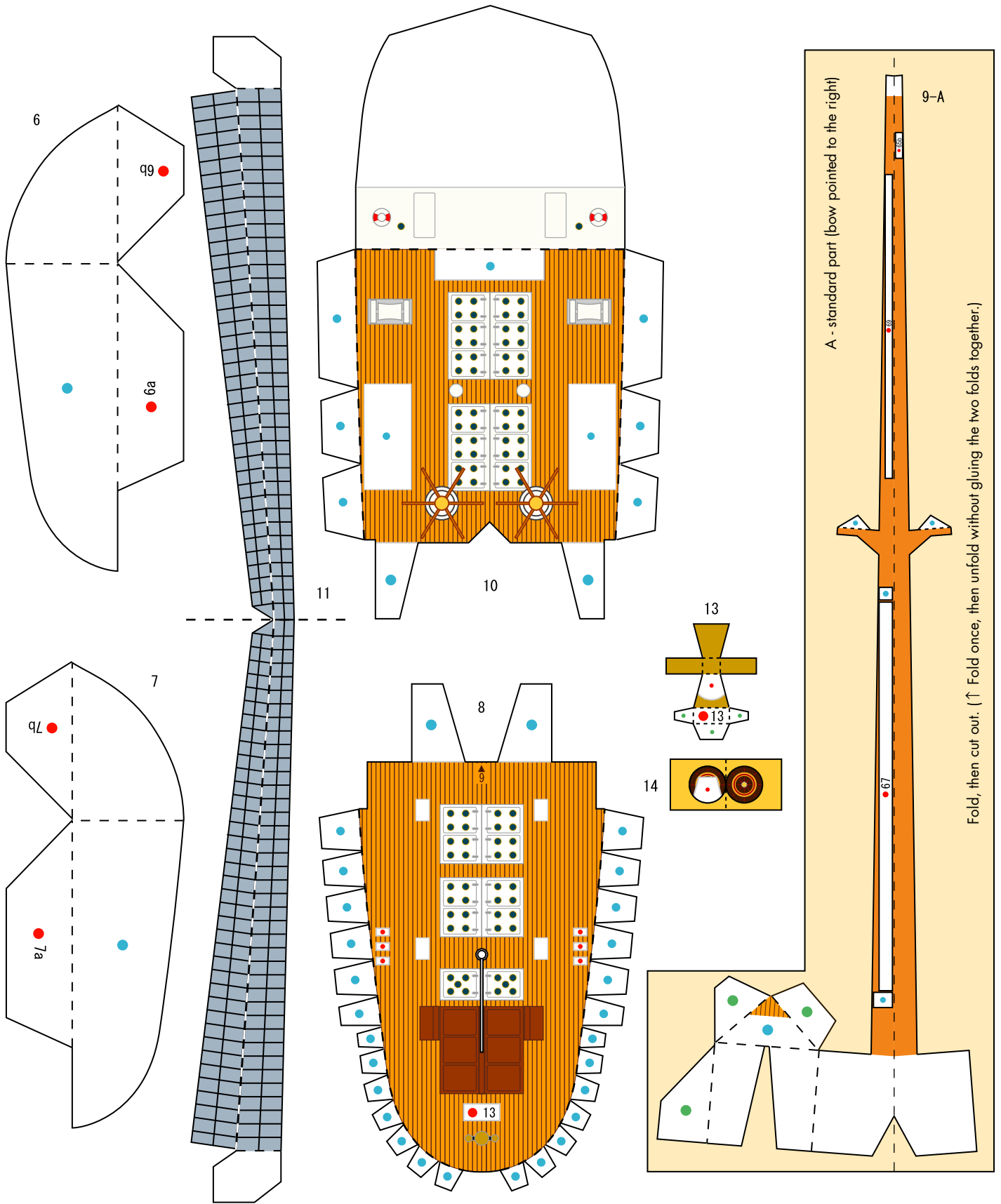


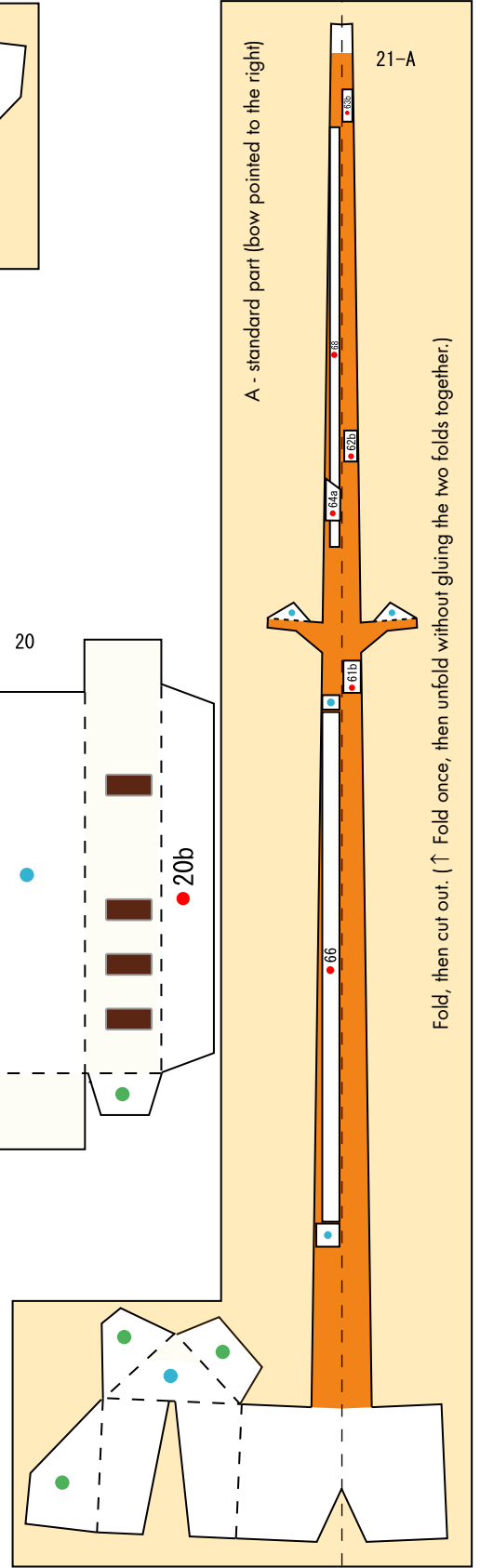
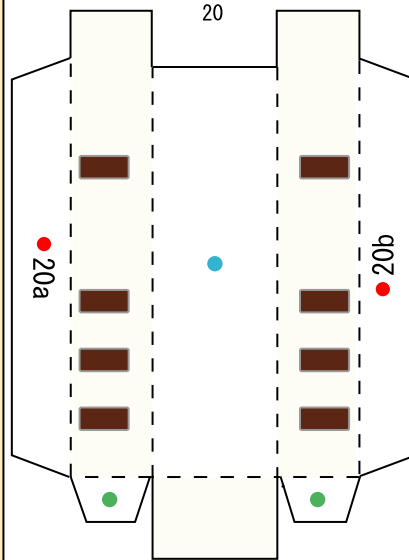
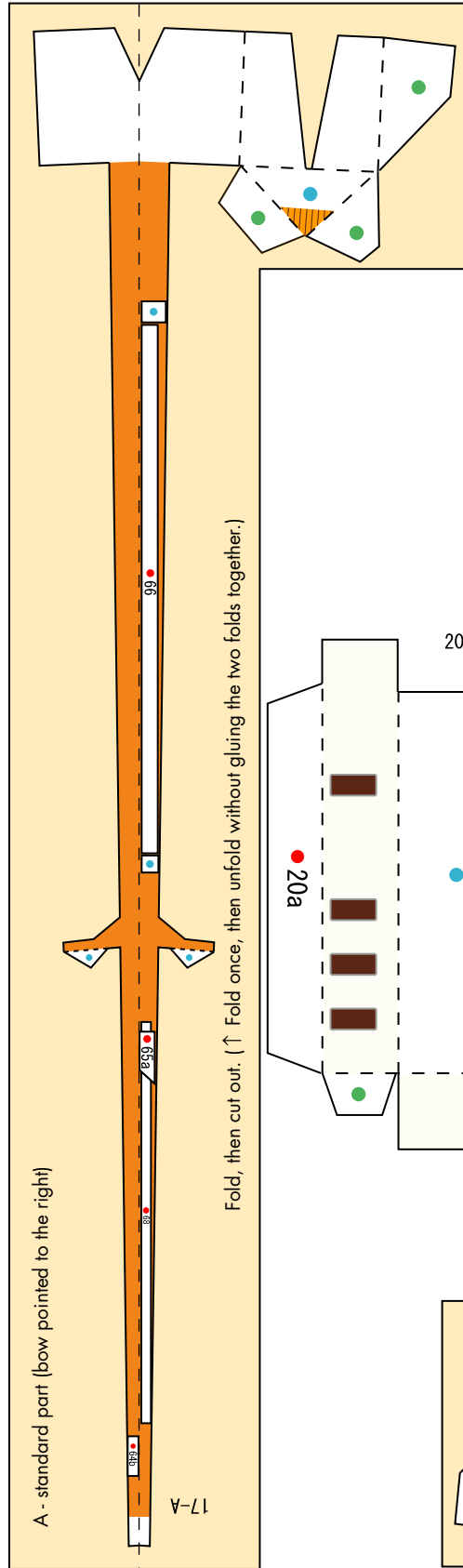
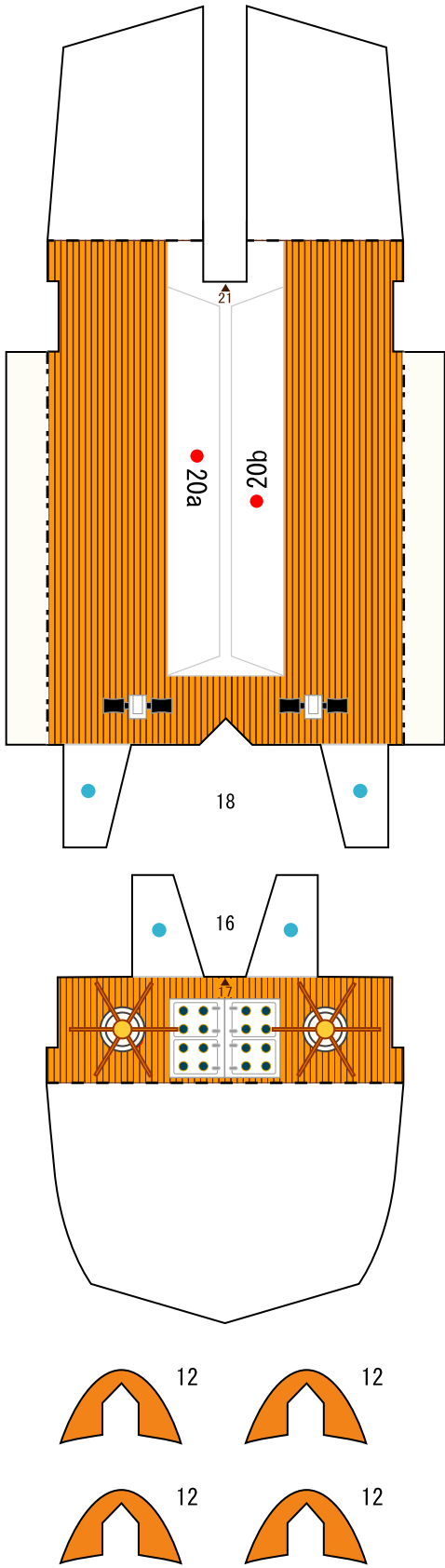


Ships of the world : Esmeralda : Pattern

© Canon Inc. © M. Nishiguchi/SENAUN

Canon



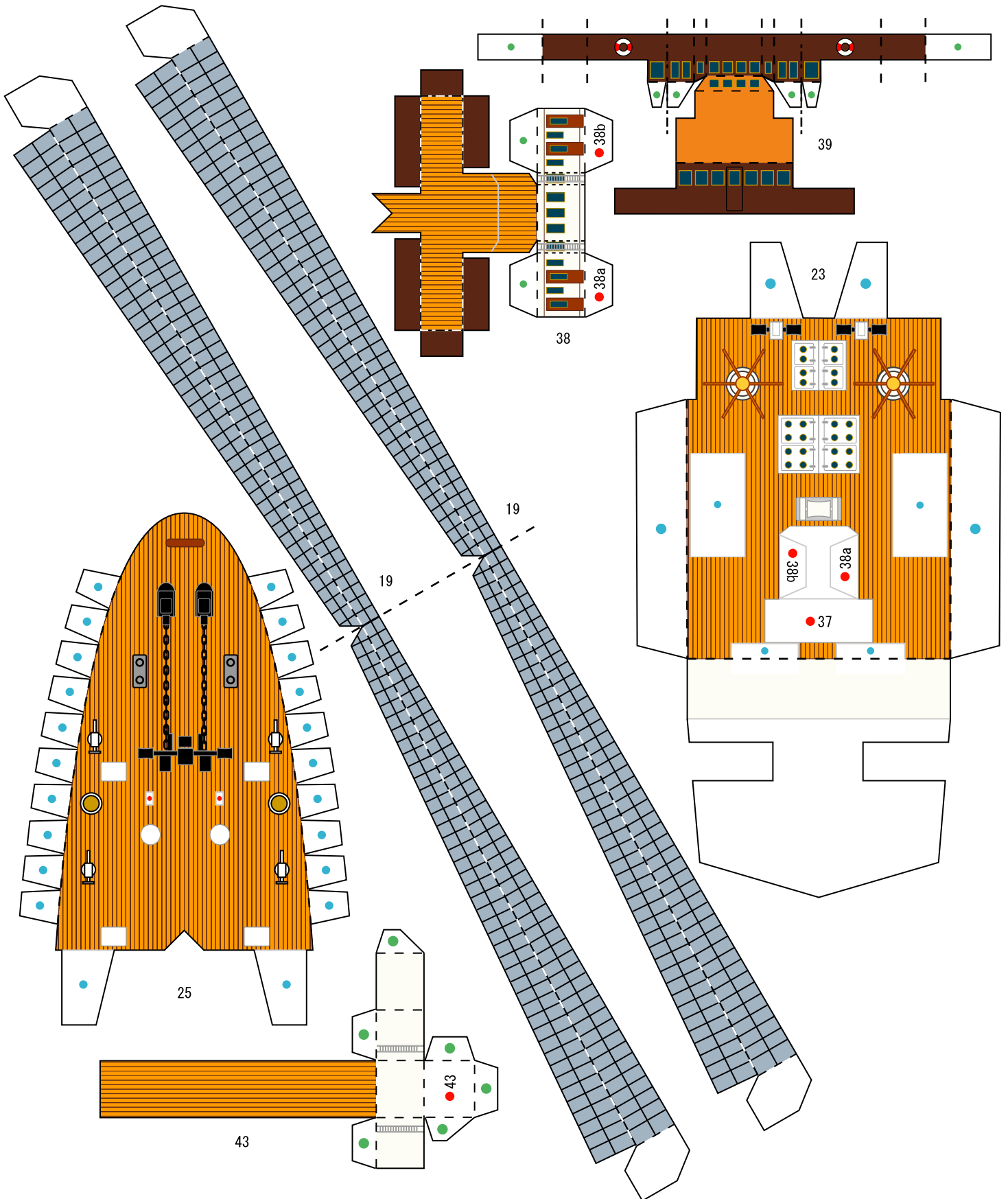




Ships of the world : Esmeralda : Pattern

© Canon Inc. © M. Nishiguchi/SENAUN

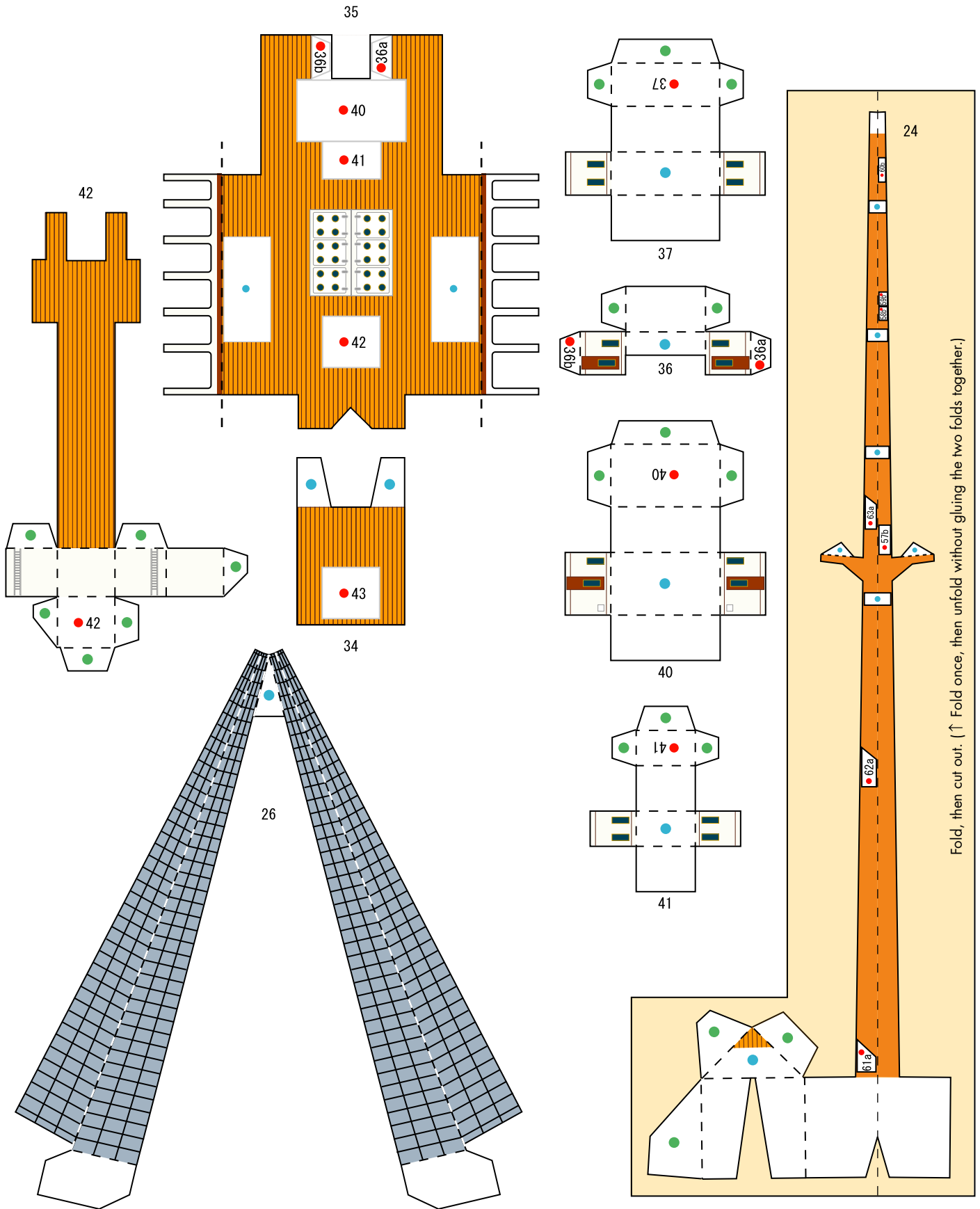
Canon





Ships of the world : Esmeralda : Pattern

© Canon Inc. © M. Nishiguchi/SENAUN

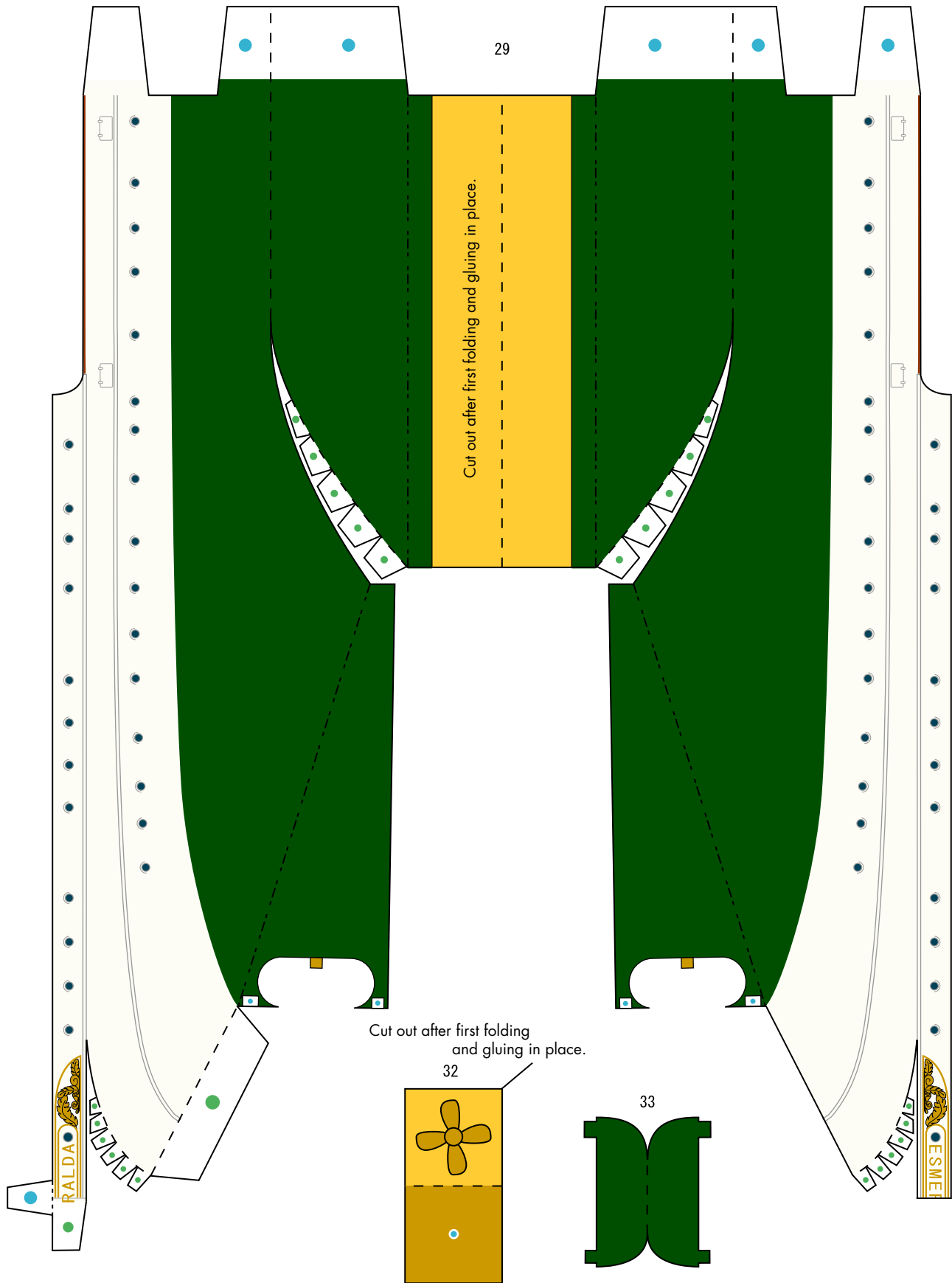




Ships of the world : Esmeralda : Pattern

© Canon Inc. © M. Nishiguchi/SENAUN

Canon





Ships of the world : Esmeralda : Pattern

© Canon Inc. © M. Nishiguchi/SENAUN

Canon

