



## Giant Panda



### Tools

Scissors  
Paste, or woodwork glue  
Stencil pen, or bodkin  
Ruler

### Notation Key

— Scissors line  
..... Mountain fold  
- - - Valley fold  
+ Glue spot  
A1, B1 Parts No.

◆ The Assembly instructions are divided into three blocks: A (head), B (body), and C (legs). Follow the instructions for each block to assemble your giant panda.

◆ ★ mark is a basic assembly technique that remains the same regardless of the part. Instructions are printed only for the first instance.

### <Caution>

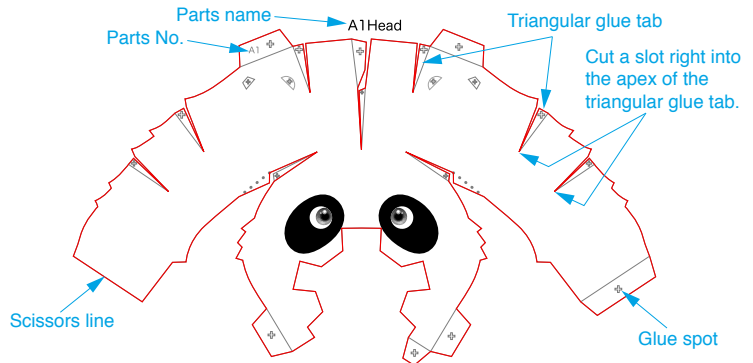
- ✂ Keep scissors and glue away from small children.
- ✂ Be careful not to cut your fingers when using scissors.

## A Assemble the head

Use pattern: Page2.

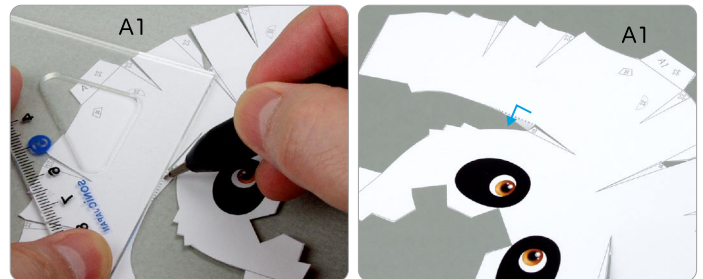
① Cut out A1 by cutting along the lines.

★ Cut along the line marked —.



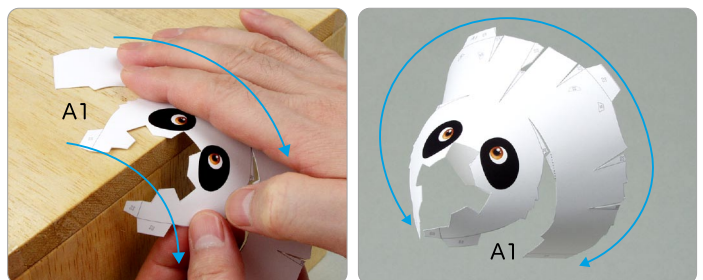
② Make a mountain fold on A1.

★ Trace along the mountain fold line with a stencil pen, scoring it to make it easier to fold.



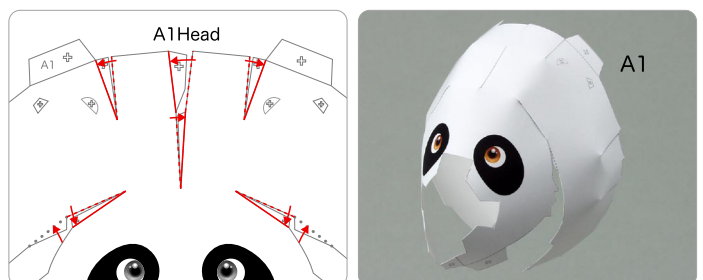
③ The parts will be easier to assemble if curled.

★ Using the photo as a guide, apply pressure with the palm of your hand, gradually curling the paper in the direction of the arrow.

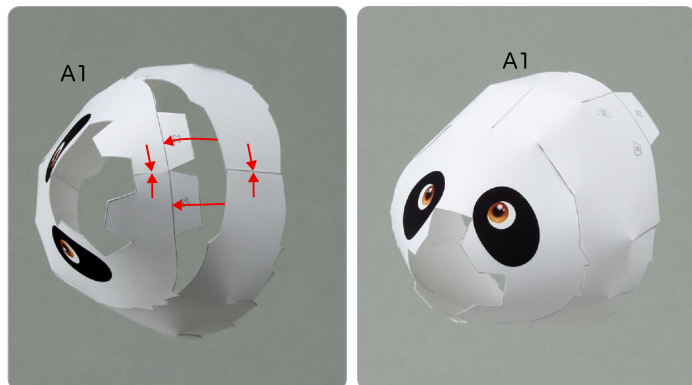


④ Add a slight curl to A1 when attaching it.

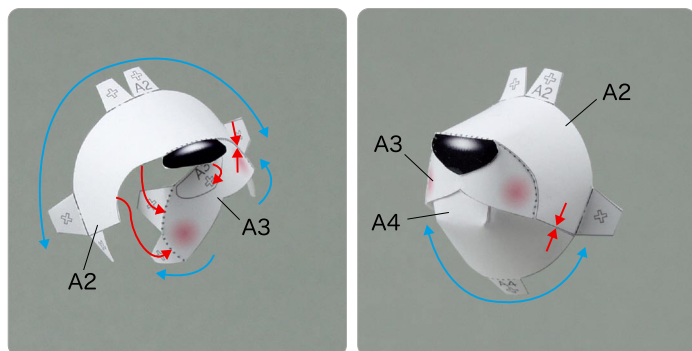
★ Attach the triangular glue tabs so that the front side becomes convex.  
★ Using the photo as a guide, attach in the direction of the arrow.



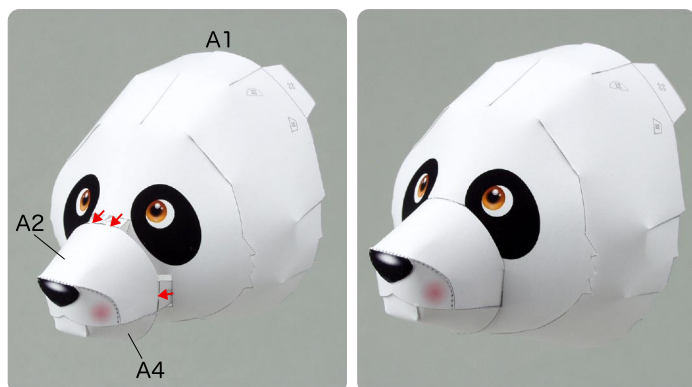
⑤ Glue the remaining A1 glue tabs.



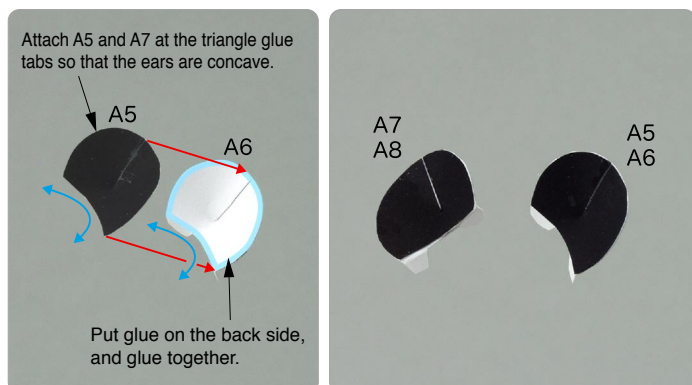
⑥ Attach A2 and A3, and attach them to A4.



⑦ Attach the mouth to the head.



⑧ Attach A5, A6, A7 and A8.



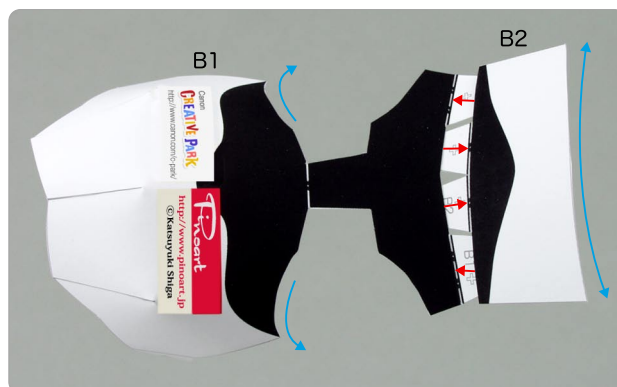
⑨ Attach A6 and A7 to the head.



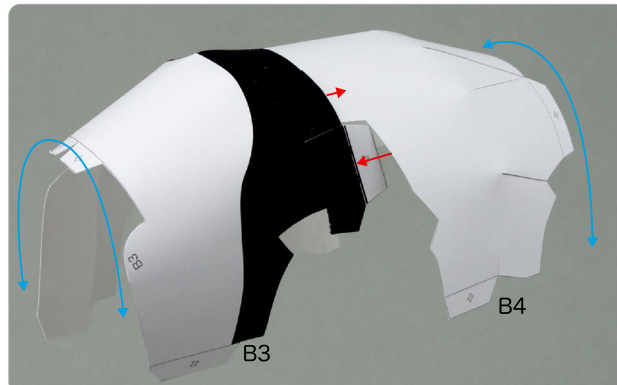
## B Assemble the body

Use pattern: Page3 to Page4.

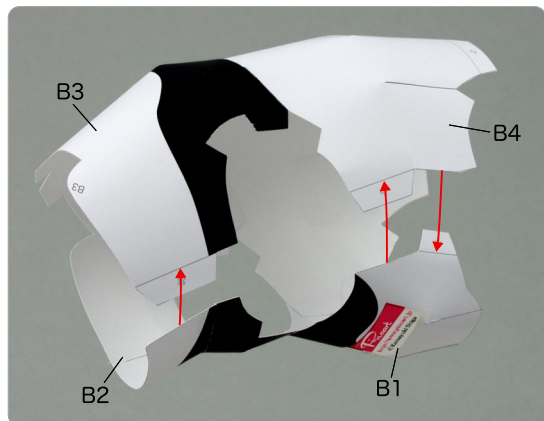
① Attach B1 and B2.



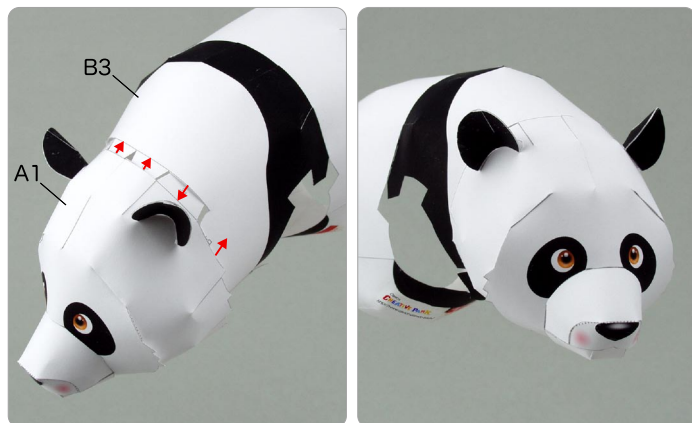
② Attach B3 and B4.



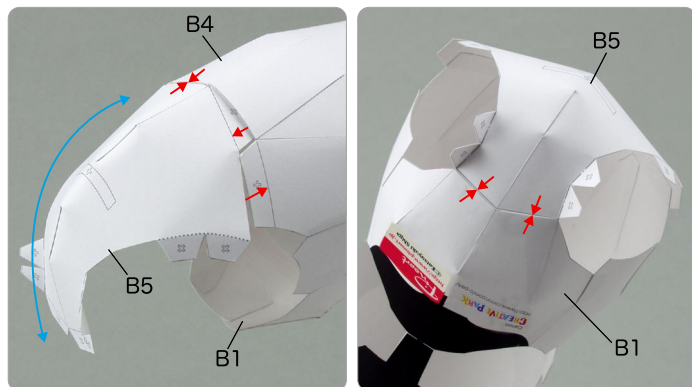
③ Attach B1, B2, B3 and B4.



④ Attach the body and the head.



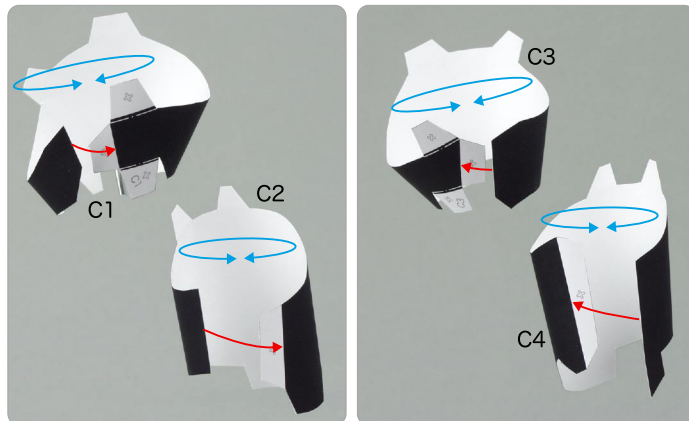
⑤ Attach B5 and the body to complete the body.



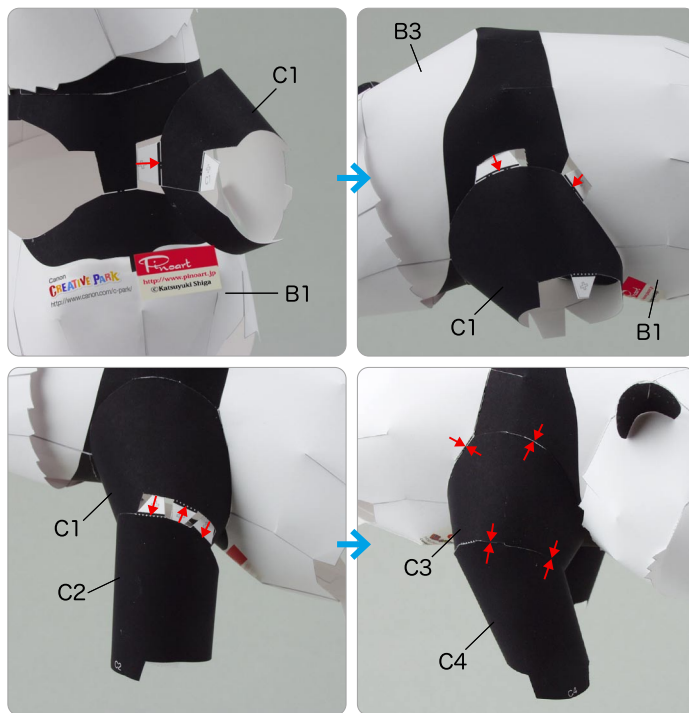
## C Assemble the legs

Use pattern: Page5 to Page6.

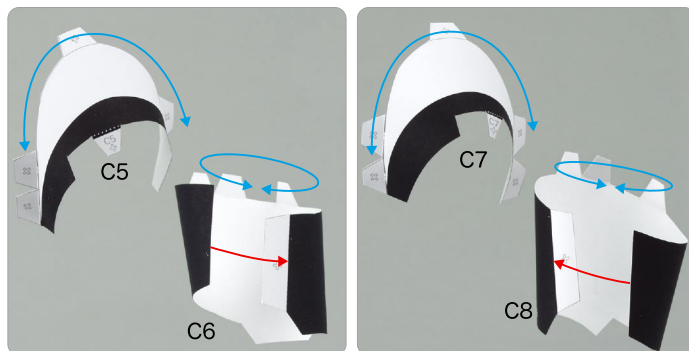
① Assemble C1, C2, C3 and C4.



② Attach C1, C2, C3 and C4 to the body in order.



③ Assemble C5, C6, C7 and C8.

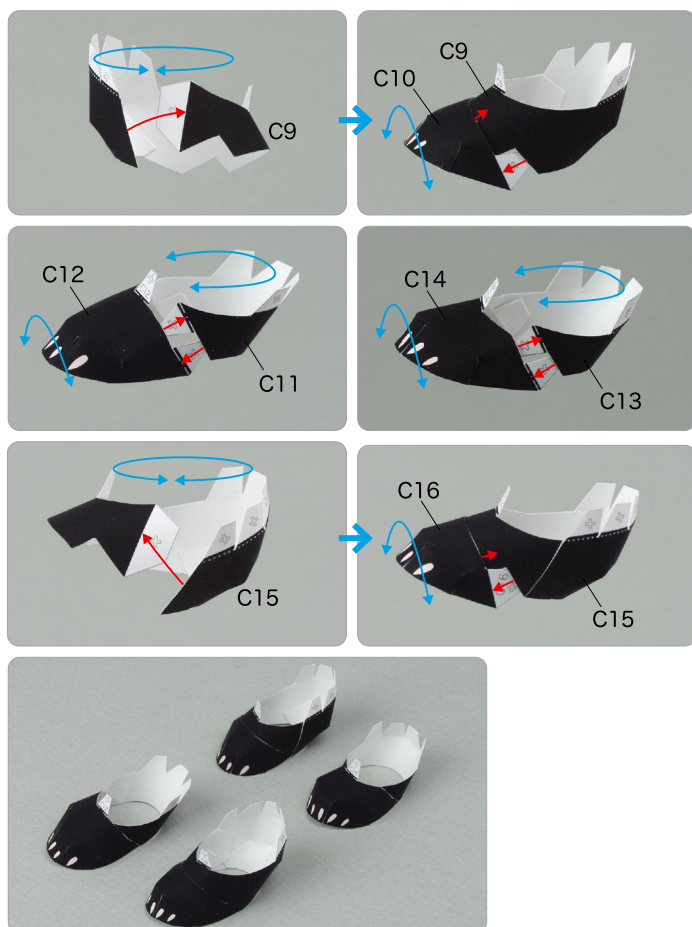




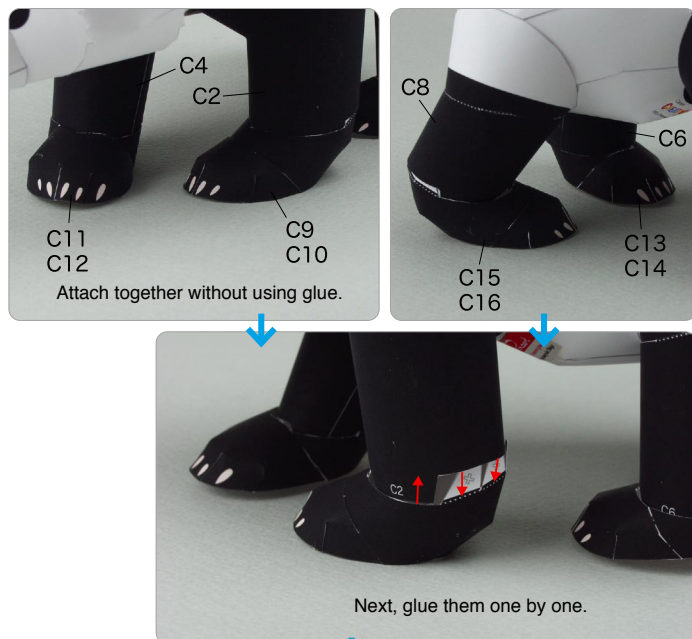
④ Attach C5, C6, C7 and C8 in order.



⑤ Attach C9 and C10, C11 and C12, C13 and C14, C15 and C16.



⑥ Without adding glue, fit the feet to the legs so that they stand on the ground. Next, attach them together with glue.



⑦ Attach C17 to the body, and your giant panda is complete.

