

**PAPER CRAFT****Rare Animals of the World****Rare Animals in the Amazon**

Vol.4

**Giant Armadillo****Assembly Instructions**

Thank you for downloading this paper craft model of the Giant Armadillo. By matching the names and numbered parts in the instructions, you and your family can complete a paper craft model of this rare and precious animal.

- Assembly instructions: Seven A4-sized sheets.
- Paper craft: Three A4-sized sheets with 13 parts in all

These instructions apply only to the "Giant Armadillo."  
These Paper Craft parts are easier to work with when printed out on strong, thick paper (like postcard stock).

\*In creating these Paper Craft models we use 110kg Kent paper stock

## 1 To begin

### ■ Tools and materials needed

-Ruler - scissors - blade cutter or "Exacto-knife" - awl or other pointed tool (for making a folding crease) - felt pen - pin set - glue - hand towel ( for cleaning your fingers) - dictionary or other heavy book ( to press the papers flat).

### ■ Items of Caution

\*Take care when using sharp or pointed objects or when using bladed cutting tools. Place a heavy sheet of paper under the paper you want to cut.

\*Use glue and other adhesives only in well-ventilated areas.

\*When printing, use a slightly reduced font size. There may be differences in dimensions, depending on the type of printer used.

## 2 How to assemble

\*Follow the working method and markings carefully.

\*Cut carefully along the outer line with cutting blade, Exacto-knife or scissors.

### One - point Advice

\*Cut carefully with cutting blade, Exacto-knife or scissors.

\*For folding parts, first use an awl or other pointed tool to make a light crease along the dotted or solid line. This will make the folds straight. Avoid making strong creases, as this will cause the paper to tear.

\*As an adhesive, white wood glue is recommended. Avoid over application as this may cause the paper to wrinkle.

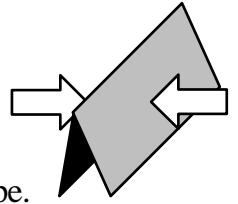
\*Before beginning assembly, test adhesive amounts on extra paper.

\*Occasionally, white spots will be apparent on folds and cuts. Use a marker or pencil to fill in these spots. It is recommended that this be done after each stage of assembly because coloring becomes more difficult once parts are assembled.

## Basic working method and markings

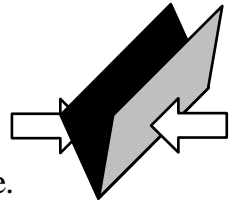
### ————— Solid lines

Fold along these lines.  
The printed surface should be on the outside of the folded shape.



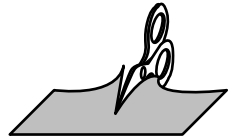
### ----- Broken lines

Fold along these lines.  
The printed surface should be on the inside of the folded shape.

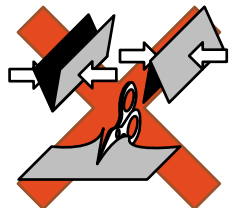


### ----- Dotted line

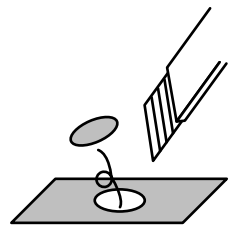
Cut along these lines.



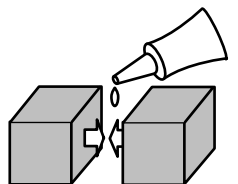
Do not fold or cut the parts marked X.



Cut out parts marked with an asterisk(\*).



Red dots are the reference positions for gluing surfaces.



Please refer to the "Basic working method and markings" symbol chart on Page 2 to assemble each part.

Indication of Working Methods



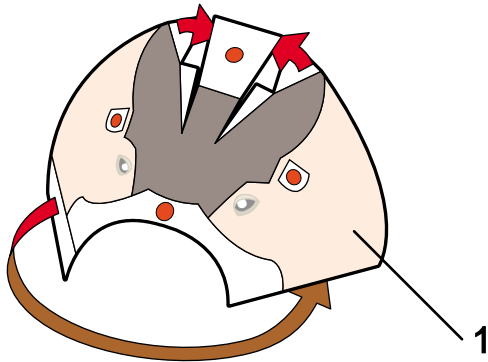
Fold or Curve



Glue

## Instructions for Giant Armadillo

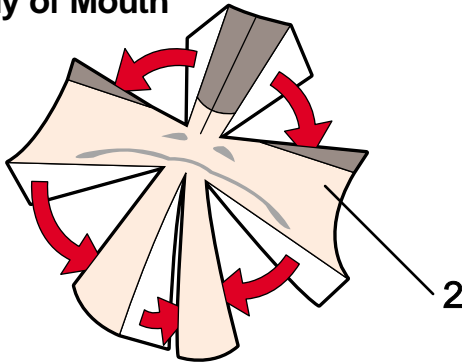
**1. Assembly of Head** Fold each relevant part according to the assembly symbols.



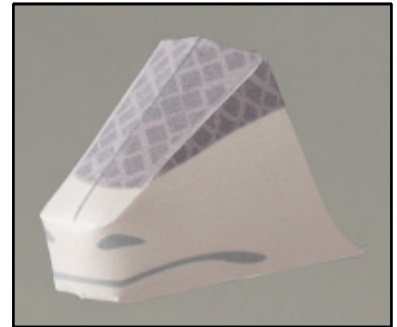
Reference photo



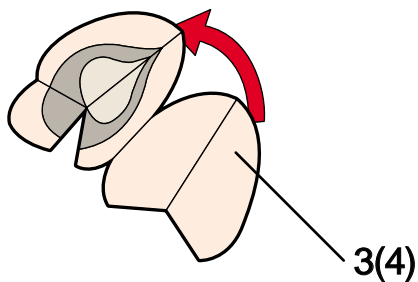
**2. Assembly of Mouth**



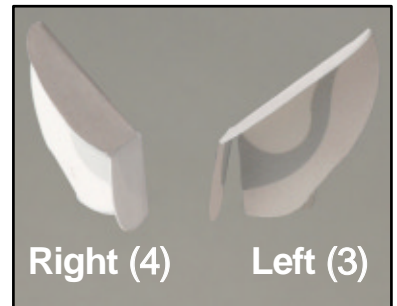
Reference photo



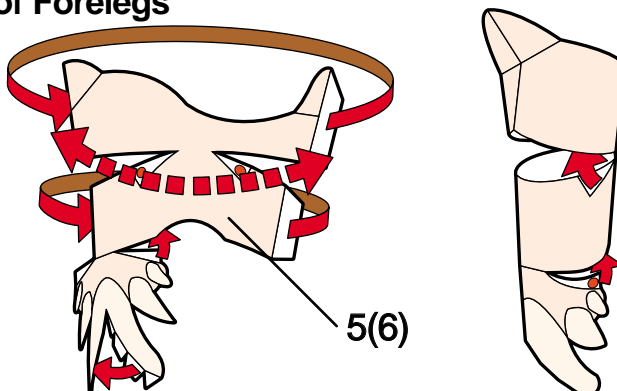
**3. Assembly of Ears**



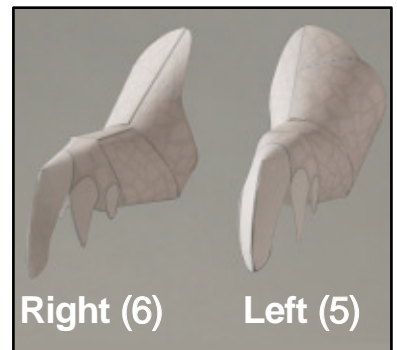
Reference photo



**4. Assembly of Forelegs**



Reference photo



Please refer to the "Basic working method and markings" symbol chart on Page 2 to assemble each part.

Indication of Working Methods



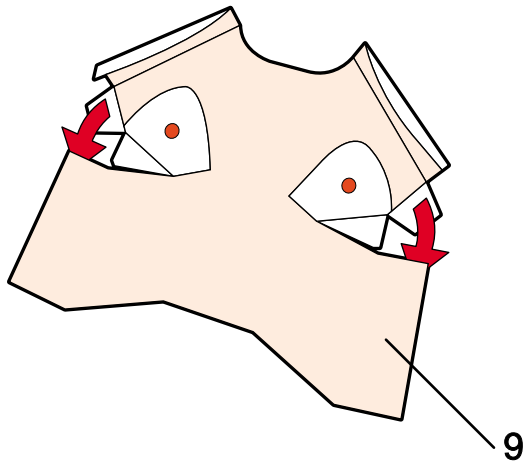
Fold or Curve



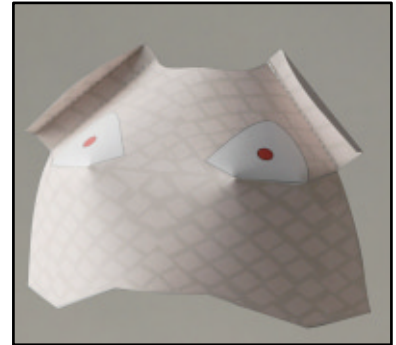
Glue

## Instructions for Giant Armadillo

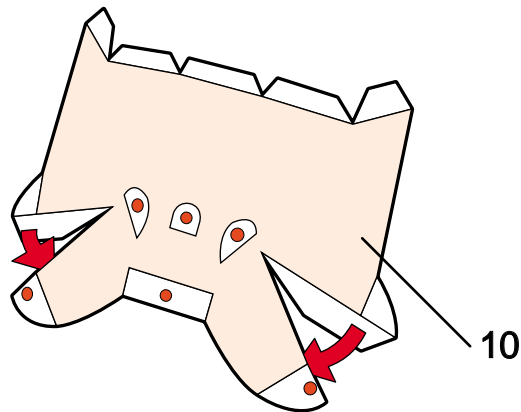
**5.Assembly of Chest** Fold each relevant part according to the assembly symbols.



Reference photo



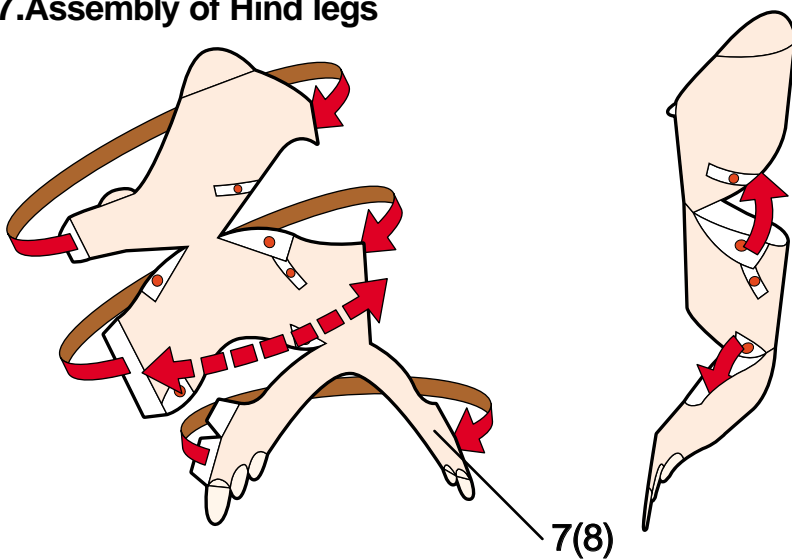
**6.Assembly of Belly**



Reference photo



**7.Assembly of Hind legs**



Reference photo



Please refer to the "Basic working method and markings" symbol chart on Page 2 to assemble each part.

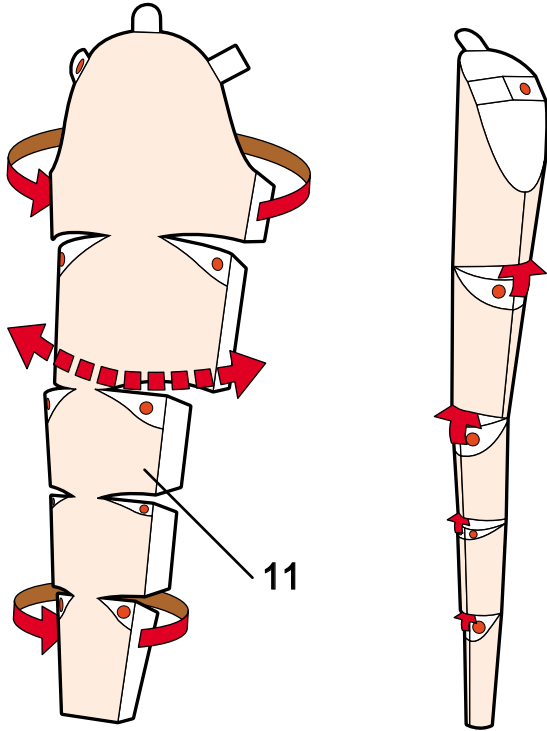
Indication of Working Methods

▬▬▬▶ Fold or Curve    → Glue

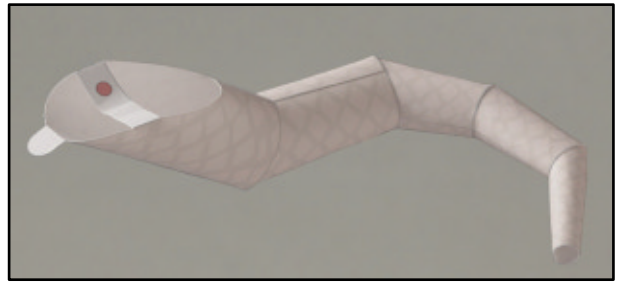
## Instructions for Giant Armadillo

### 8. Assembly of Tail

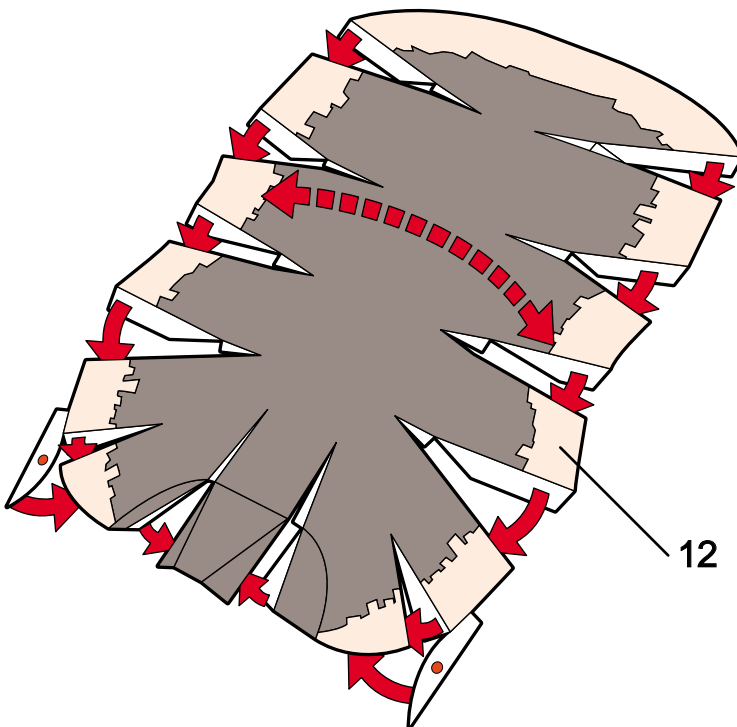
Fold each relevant part according to the assembly symbols.



Reference photo



### 9. Assembly of Back



Reference photo



Please refer to the "Basic working method and markings" symbol chart on Page 2 to assemble each part.

Indication of Working Methods



Fold or Curve



Glue

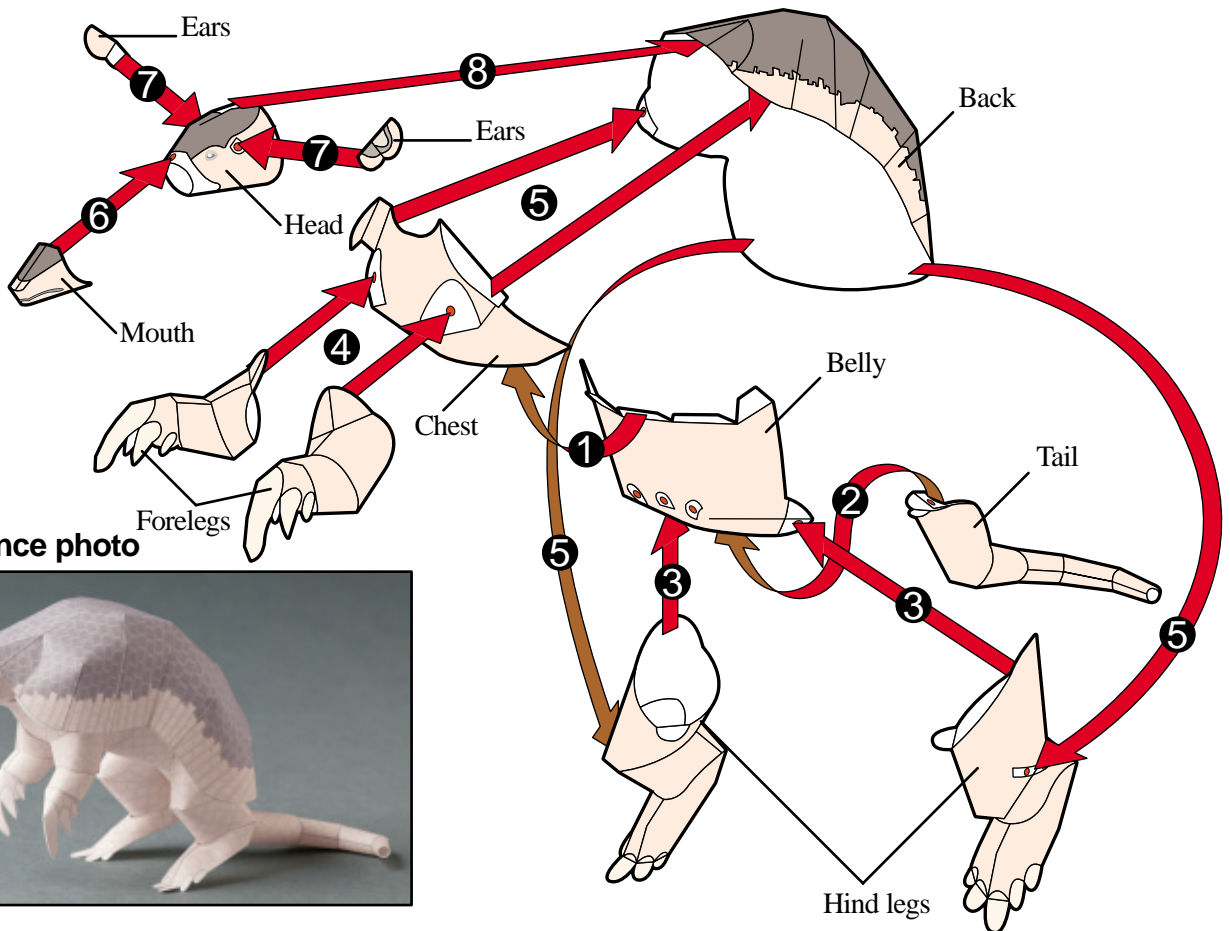
## Instructions for Giant Armadillo

Please use the ● dots on each component as reference when gluing surfaces.

**10. Finish** Assemble according to steps ① through ⑧.

### Procedure

- ① Glue the belly to the chest.
- ② Glue the tail to the part completed in step ①.
- ③ Glue the hind legs to the part completed in step ②.
- ④ Glue the forelegs to the part completed in step ③.
- ⑤ Glue the part completed in step ④ to the back.
- ⑥ Glue the mouth to the head.
- ⑦ Glue the ears to the part completed in step ⑥.
- ⑧ Glue the completed parts in steps ⑤ and ⑦.



### Reference photo



### Assembly of the Pedestal

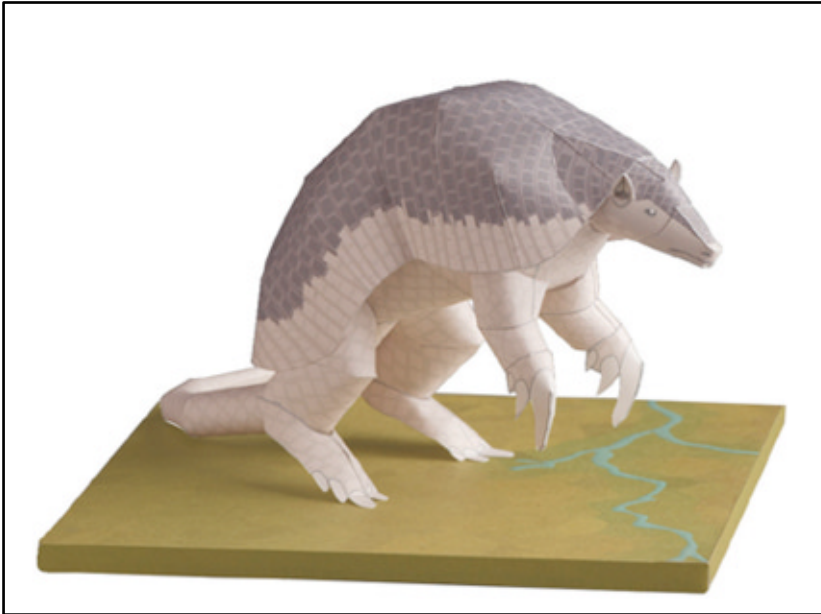
Assemble the pedestals of all five of the Amazon series to create your own "Amazon River".

\*Display the completed paper sculpture of the Giant Armadillo on the pedestal.



## 4 Completion

Here are pictures of the completed models.  
Please refer to them when assembling and painting.



### Colored Giant Armadillo

Photo of realistically colored paper sculpture.



### Uncolored Giant Armadillo

Uncolored sculpture with textured paper.



### Giant Armadillo Seal, Rare Animal

The “giant armadillo,” the largest species in the Armadillo family, has a body completely covered with a hard and thick shell which is a kind of skin. It looks like it might be a slow, lumbering animal, but in fact it's quite quick on its toes. It stands by balancing on its hind legs and walks with its tail. The giant armadillo defends itself by curling up like a ball when it detects danger, but because its body is unable to form a complete ball, it can dig holes very quickly to hide in when it senses life-threatening situations. It feeds mainly on ants and termites, and also spiders, worms, and snails as well as larva. Giant armadillos dig burrows near termite mounds and are usually found in places like southern Colombia and eastern Venezuela close to water sources. They generally live alone. The gestation period is about 4 months and females give birth to litters of one or two babies. The number of Giant armadillo is decreasing because of over-hunting for food in the Amazon basin and Paraguay, and deforestation due to road constructions.