

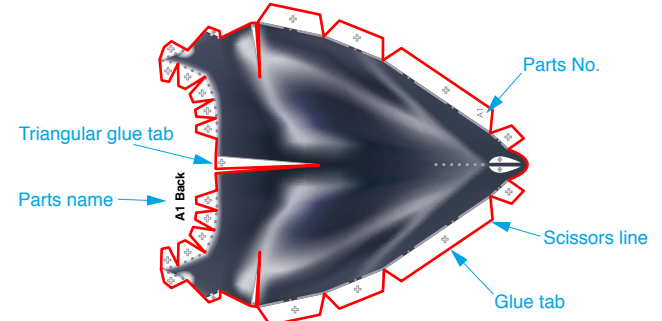


Assemble the body, fin and tail

Use pattern: Page2 to Page4.

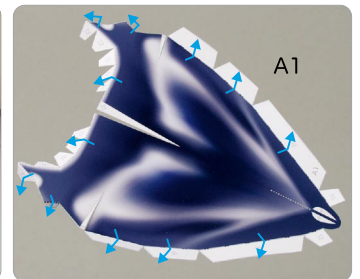
① Cut out A1 by cutting along the lines.

★ Cut along the line marked .



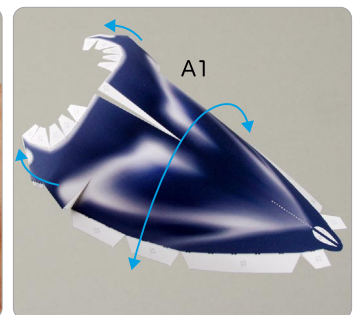
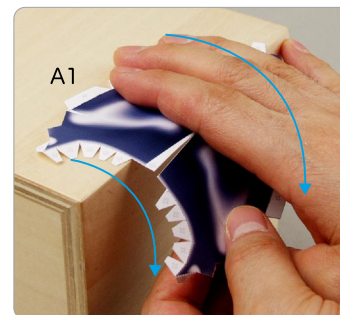
② Make a mountain fold and valley fold on A1.

★ Trace along the mountain fold line and valley fold line with a stencil pen, scoring it to make it easier to fold.



③ The parts will be easier to assemble if curled.

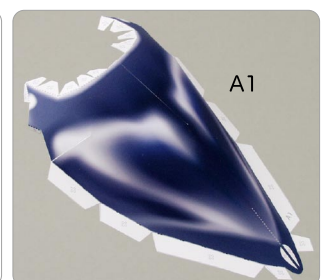
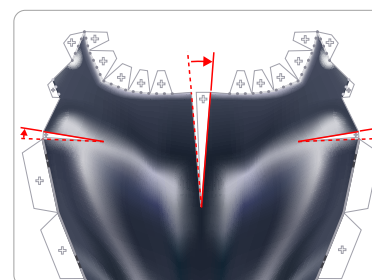
★ Using the photo as a guide, move your fingers in the direction of the arrow, adjusting the pressure to curl the paper.



④ Add a slight curl to A1 when attaching it.

★ Attach the triangular glue tabs so that the front side becomes convex.

★ Using the photo as a guide, attach in the direction of the arrow.



Tools

Scissors
Paste, or woodwork glue
Stencil pen, or bodkin
Ruler

Notation Key

Scissors line
 Mountain fold
 Valley fold
 Glue spot
A1, B1 Parts No.

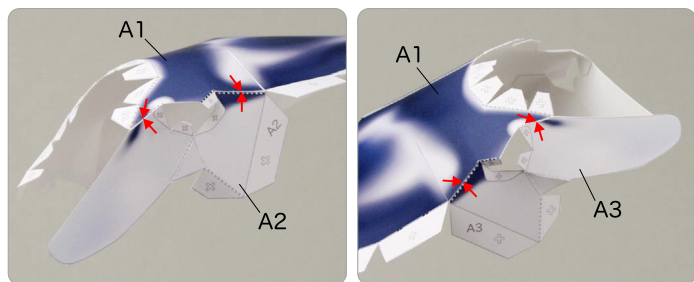
◆ The Assembly instructions are divided into two blocks:
A (body, fin, tail) and B (display stand, coral).
Follow the instructions for each block to assemble your manta ray.

◆ ★ marks a basic assembly technique that remains the same regardless of the part.
Instructions are printed only for the first instance.

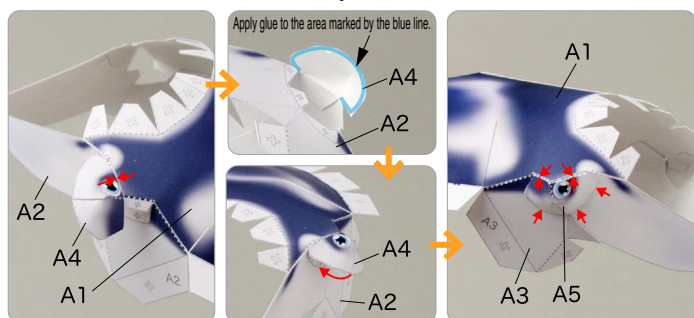
<Caution>

- ✖ Keep scissors and glue away from small children.
- ✖ Be careful not to cut your fingers when using scissors.

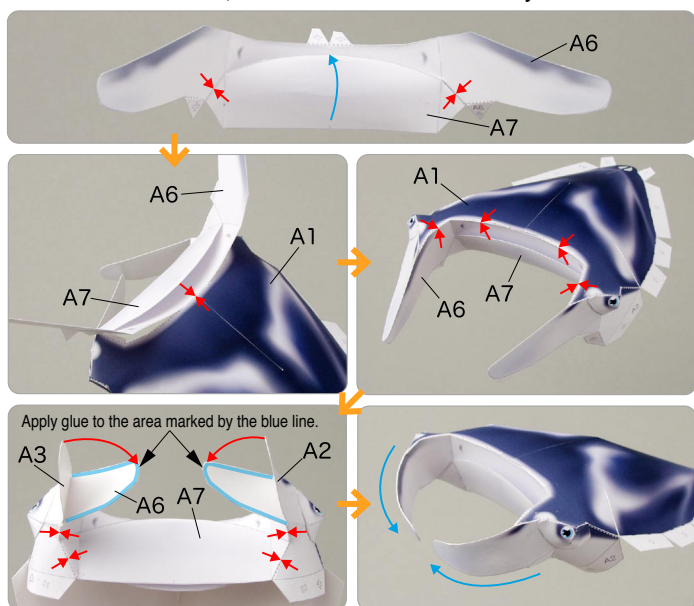
⑤ Attach A2 and A3 to A1.



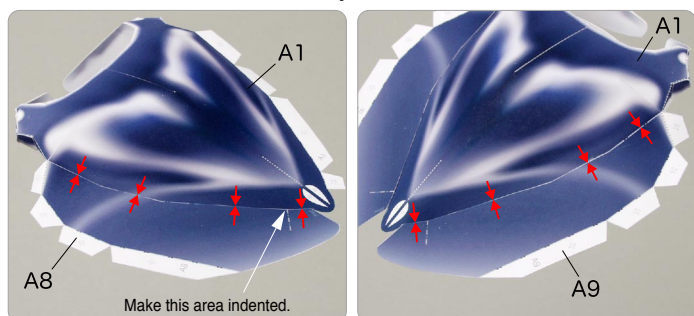
⑥ Attach A4 and A5 to the body.



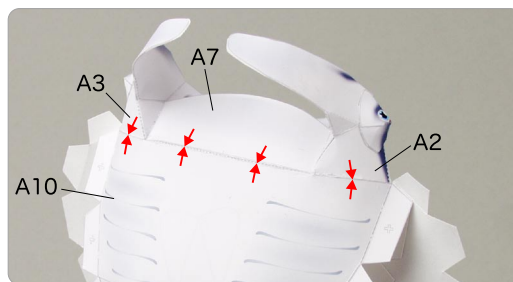
⑦ Attach A6 and A7, and attach them to the body.



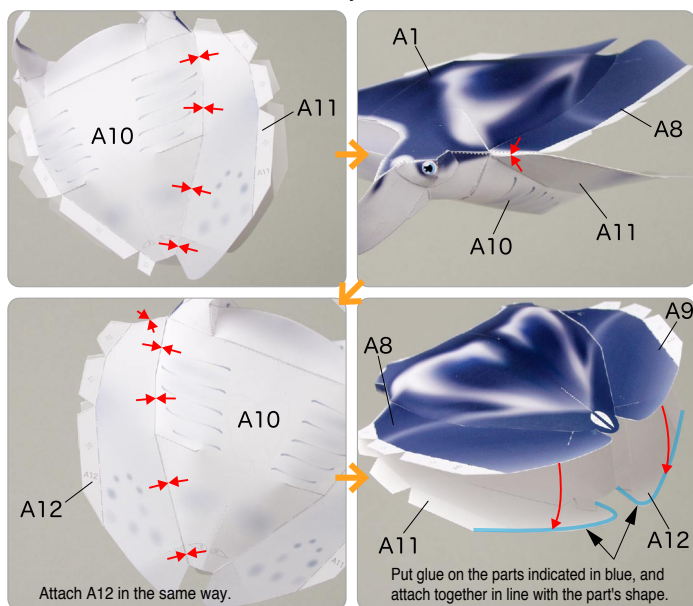
⑧ Attach A8 and A9 to the body.



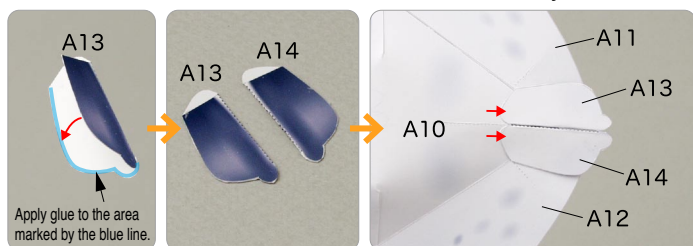
⑨ Attach A10 to the body.



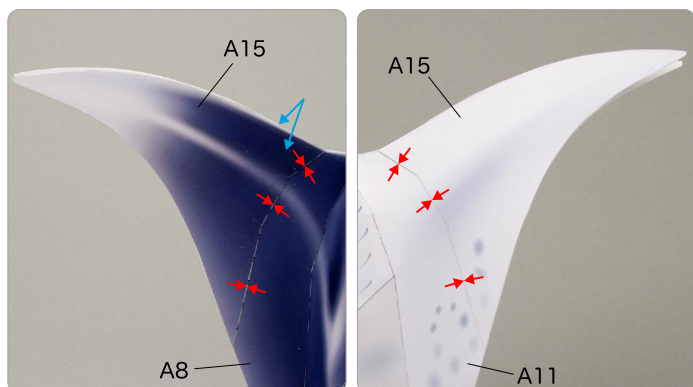
⑩ Attach A11 and A12 to the body.



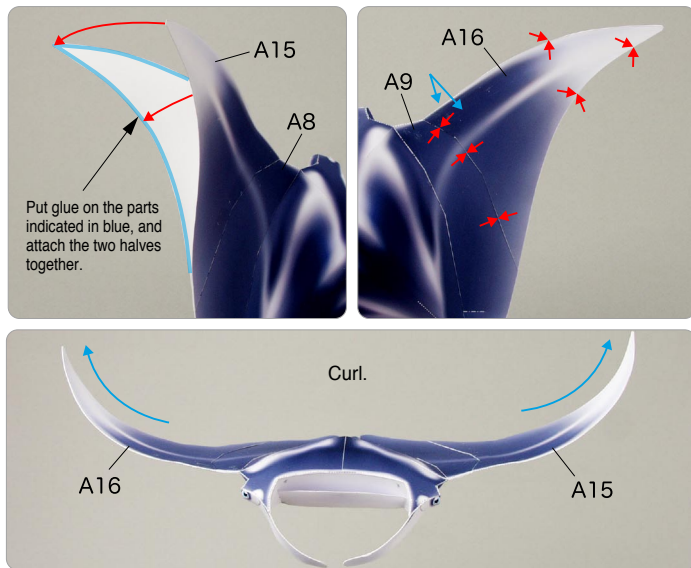
⑪ Attach A13 and A14, and attach them to the body.



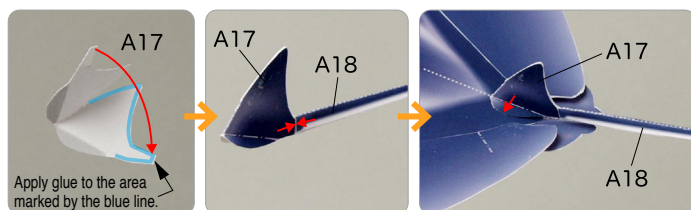
⑫ Attach A15 to the body.



- ⑬ Attach A15, and attach A16 to the body in the same way.



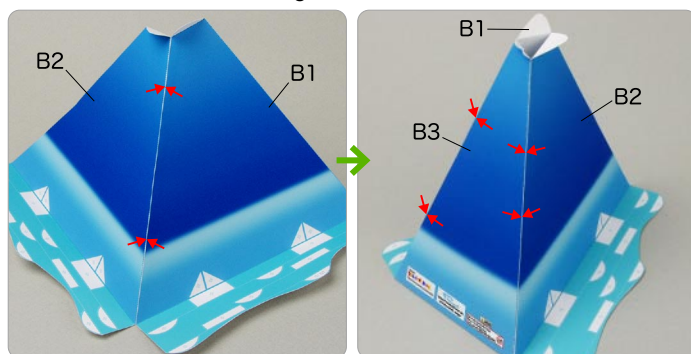
- ⑭ Assemble A17 and A18, attach them to the body, and your manta ray is complete.



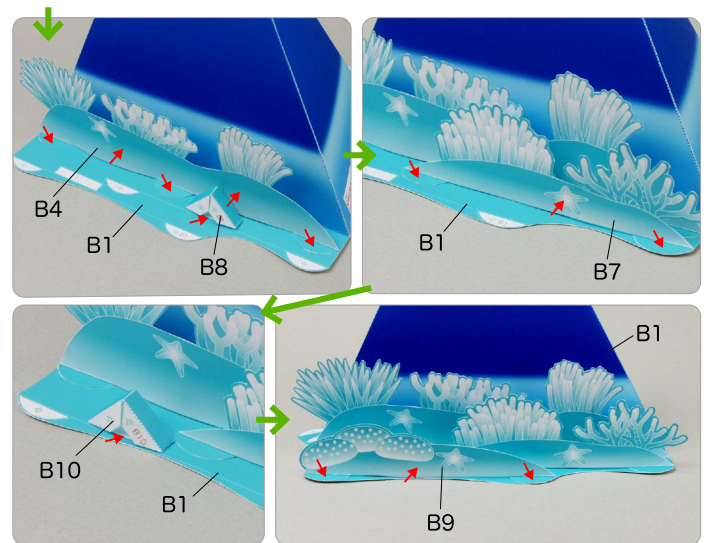
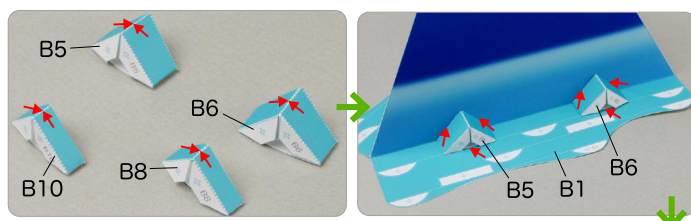
B Assemble the display stand and coral

Use pattern: Page5 to Page8.

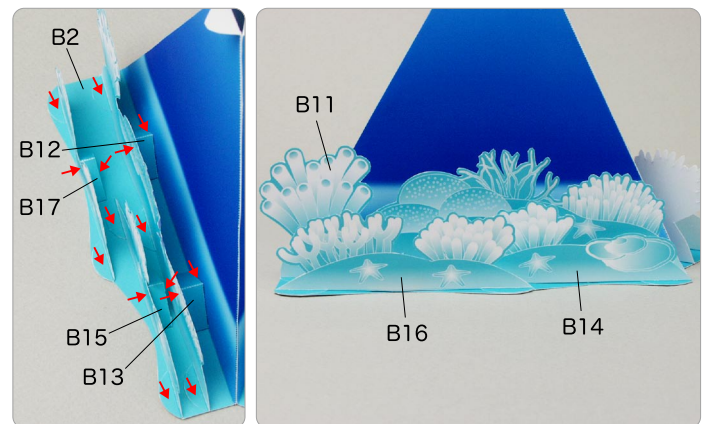
- ① Attach B1, B2 and B3 together.



- ② Assemble B5, B6, B8 and B10.
Next, attach parts B4 ~ B10 to B1.



- ③ In the same way, attach parts B11 ~ B17 to B2.



- ④ Attach the manta ray to the display stand, and you're done!

