

Canon Rhinoceros Beetle

Canon® is a registered trademark of Canon Inc. © Canon Inc. © Masakazu Kawai

CREATIVE PARK

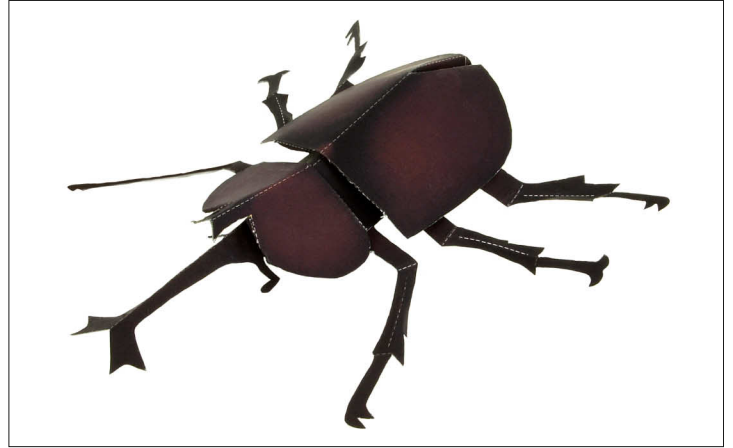
<http://www.canon.com/c-park/en/>

Rhinoceros Beetle (Scarabaeidae family)

Distribution: Japan, North and South Korea, Taiwan, Indochina

Body size: 30 to 80 mm

The rhinoceros beetle is a large beetle whose males feature large, distinctive horns. These horns are used when fighting for food, and when battling other males for mates. As they are nocturnal, rhinoceros beetles hide beneath leaf mulch or among dead leaves during the day, flying off to their feeding grounds as night approaches. Adults live for about one to two months.



[Instructions]


Using the picture of the completed insect as a guide, fold along the mountain lines and valley lines to make your own insect.

----- Mountain fold

- - - - - Valley fold

——— Scissors line

——— Cut in line

 **[Caution]** Remember to be very careful when using scissors.

