



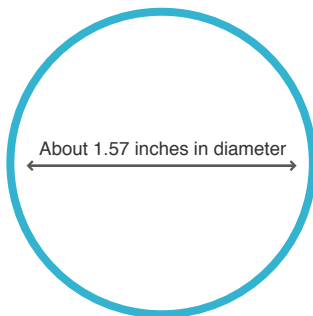
Assembly Instructions

1. Carefully cut out the parts.
2. Fold along the dotted lines, making mountain or valley folds as indicated.
3. Attach the glue spots on each part together.
4. Glue the parts together, and you're done!

\*Please read the Assembly Instructions carefully before you begin.

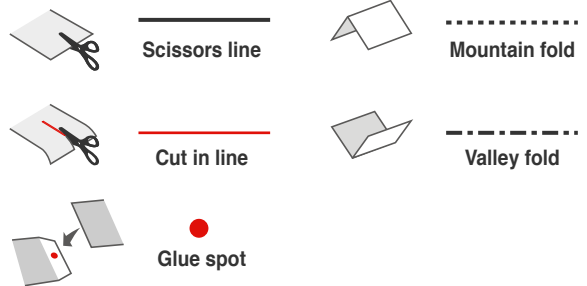
Tools

- Scissors
- Glue (We recommend quick-drying paper glue)
- 3 rubber bands (preferably brand new ones)



Actual size illustration:  
check the size of your rubber bands here.

Notation Key



How to assemble your model neatly

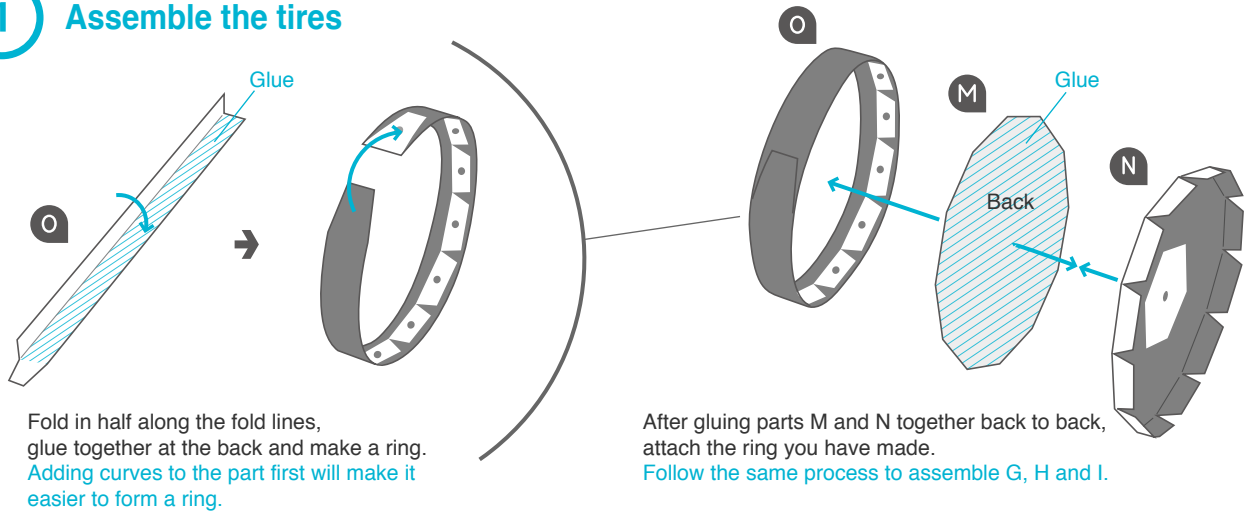
Scoring along the fold lines in advance with a dried up pen or a ruler with slightly sharp corners will result in a neater model.

\*Be careful not to press too hard as the paper may tear.

Caution

Keep scissors and glue away from small children.  
Be careful not to cut your fingers when using scissors.

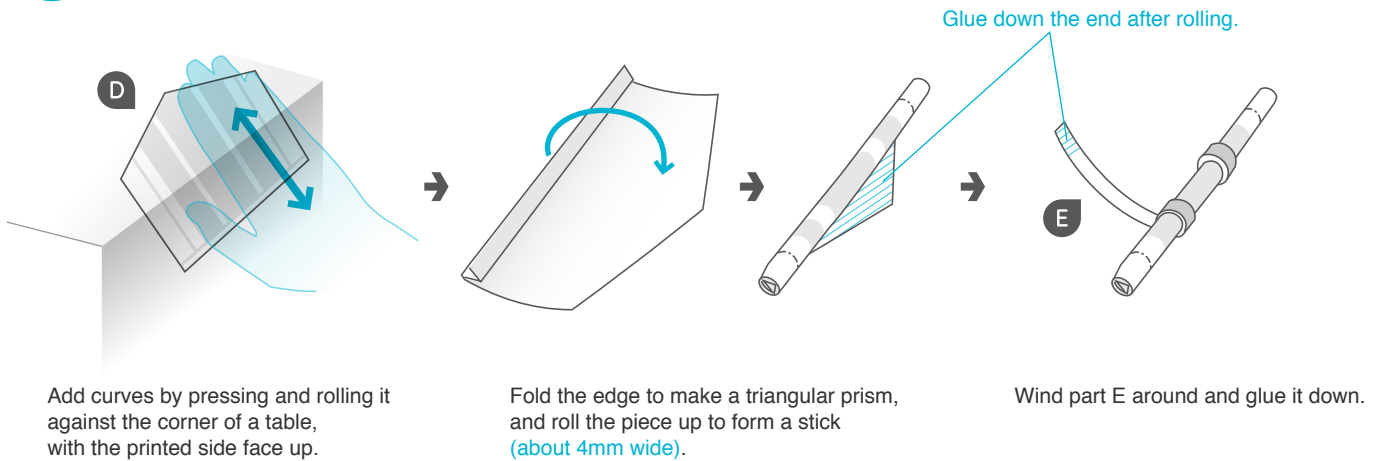
1 Assemble the tires



Fold in half along the fold lines, glue together at the back and make a ring. Adding curves to the part first will make it easier to form a ring.

After gluing parts M and N together back to back, attach the ring you have made. Follow the same process to assemble G, H and I.

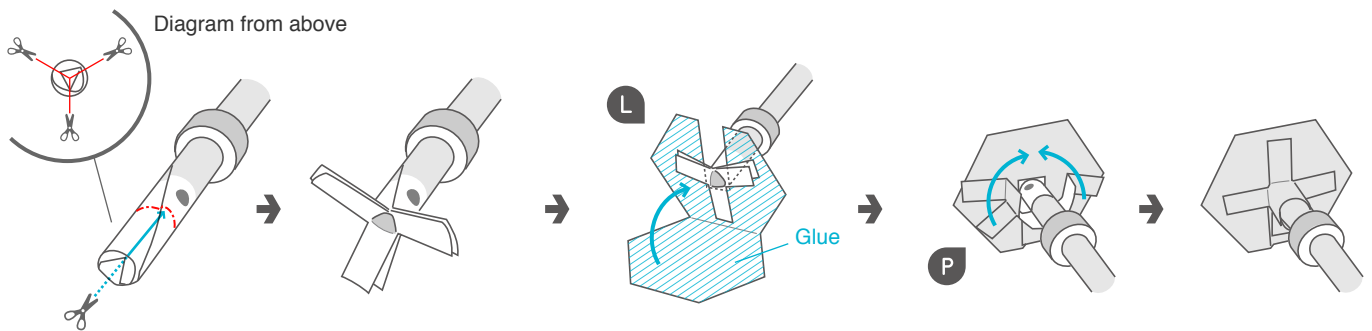
2 Assemble the axle



Add curves by pressing and rolling it against the corner of a table, with the printed side face up.

Fold the edge to make a triangular prism, and roll the piece up to form a stick (about 4mm wide).

Wind part E around and glue it down.



Cut three, equally-spaced slots in both ends of part D, up to the red valley fold line, and bend them back. \*The fine strips of paper are thick and hard so be careful of paper cuts.

Attach part L, enveloping it around the parts you cut and bent back. Attach the other side too.

Attach part P to both ends. Follow the same process to assemble the other axle.

3 Assemble the front and back wheels

If necessary, cut off the ends.

Cut the rubber band to make a string.

Tie one end of the band to the band stopper, and the other end to the middle of the axle.

Attach the tires to both ends of the axle. Follow the same process to assemble the back wheels.  
\*The axle of the back wheels does not have an rubber band attached.

4 Assemble the body interior

Assemble as shown in the diagram.

Attach part K to part R.

5 Attach the axles

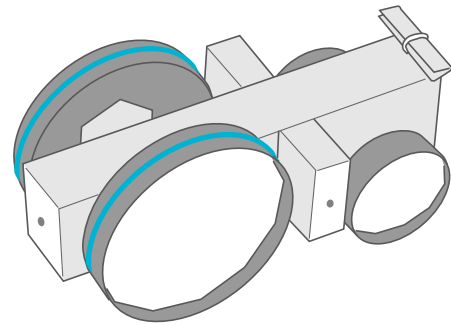
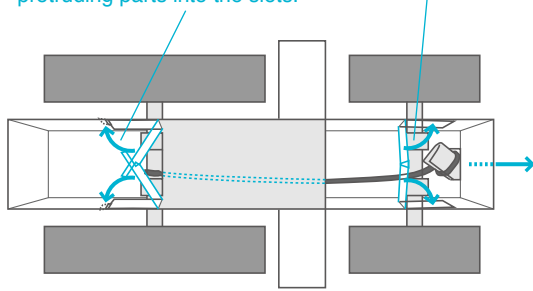
Follow the fold line, and glue together at the back.

Assemble part S, and attach the area with the diagonal lines to the inside of the body.

Fit the axles into the grooves of the body. Check that the wheels spin smoothly.

On the front wheel side, slot the protruding parts into the slots.

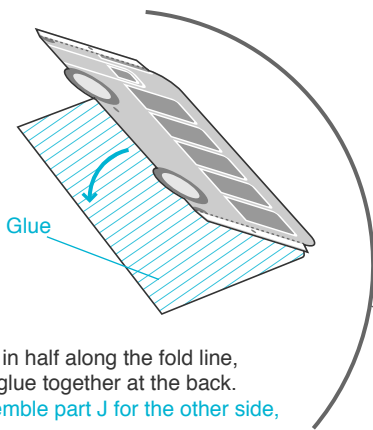
Attach.



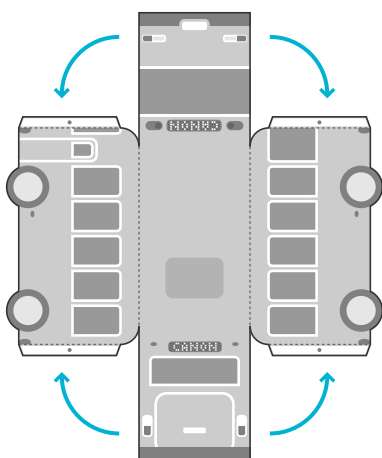
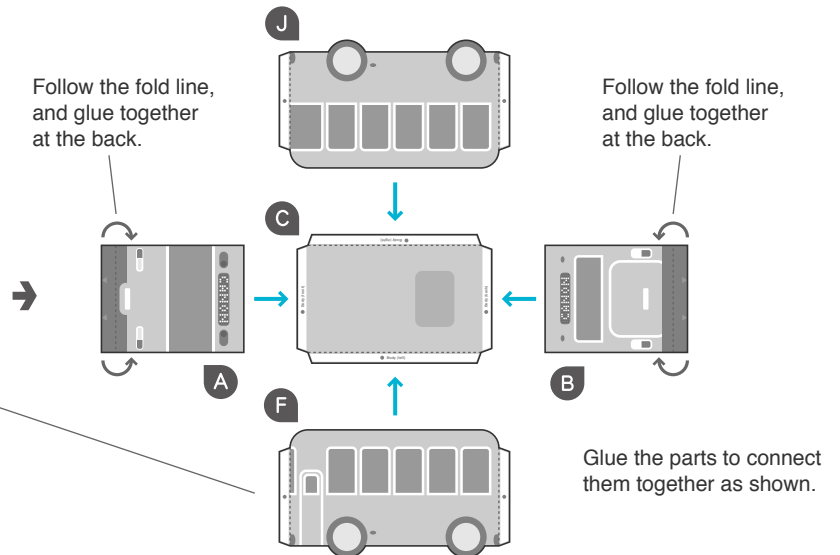
Pull the band stopper through the hole in part R.  
Be careful that the band doesn't come undone.  
The front wheels (with the bigger tires) can be removed and changed.

Wind the rubber band around the front wheels (with the bigger tires).

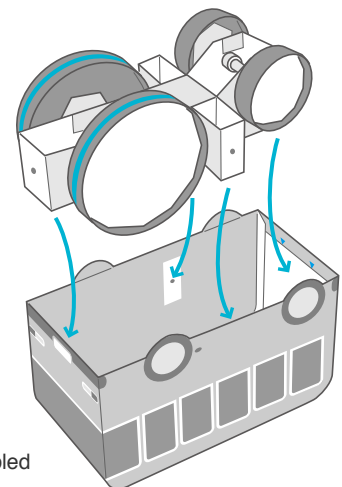
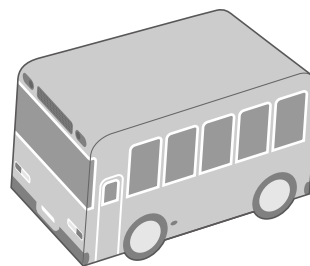
## 6 Assemble the body



Fold in half along the fold line, and glue together at the back.  
Assemble part J for the other side, in the same way.



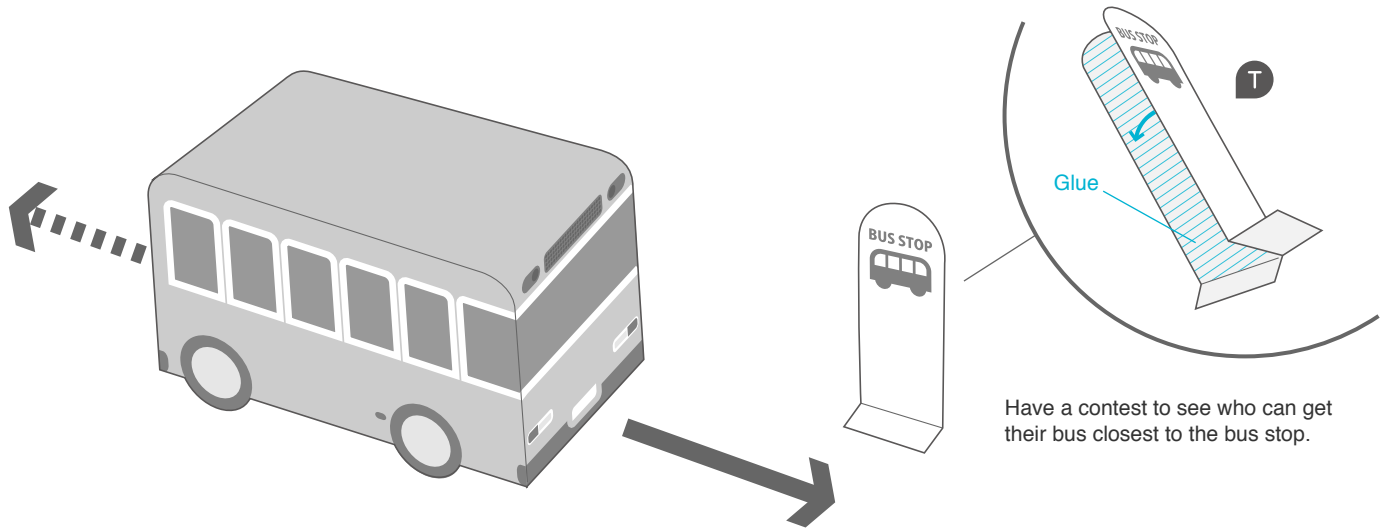
Assemble as shown in the diagram.



Turn over the body, attach the assembled body interior, and you're done!  
Be careful that the gluing positions don't shift.

How to play

Pull the car backwards along the ground, gently pushing down on the front wheels.  
 Point the car in the direction you want it to run, let it go and watch it take off!  
 Be careful not to wind the band too tightly as it may snap or come untied.  
 Play with it on a flat surface such as a table or the floor (wooden floorboards work better than carpet).



Have a contest to see who can get their bus closest to the bus stop.

If your car doesn't run well, check the following points to repair it.

- Are the axles or tires stuck against the body?
- Are the wheels or tires bent?
- Has the band lost its elasticity?
- Is the band wound up too tightly?
- Has the band come loose from the tire?
- Is the band tangled up around the axle?