

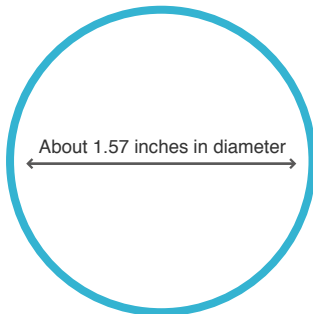
Assembly Instructions

- Carefully cut out the parts.
- Fold along the dotted lines, making mountain or valley folds as indicated.
- Attach the glue spots on each part together.
- Glue the parts together, and you're done!

*Please read the Assembly Instructions carefully before you begin.

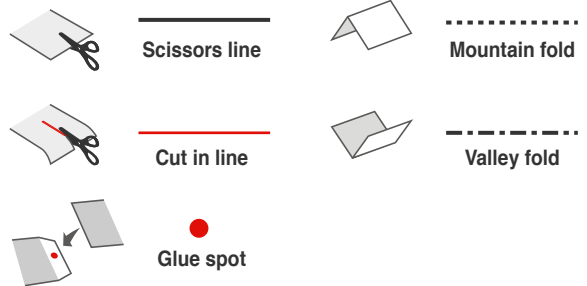
Tools

- Scissors
- Glue (We recommend quick-drying paper glue)
- 3 rubber bands (preferably brand new ones)



Actual size illustration:
check the size of your rubber bands here.

Notation Key



How to assemble your model neatly

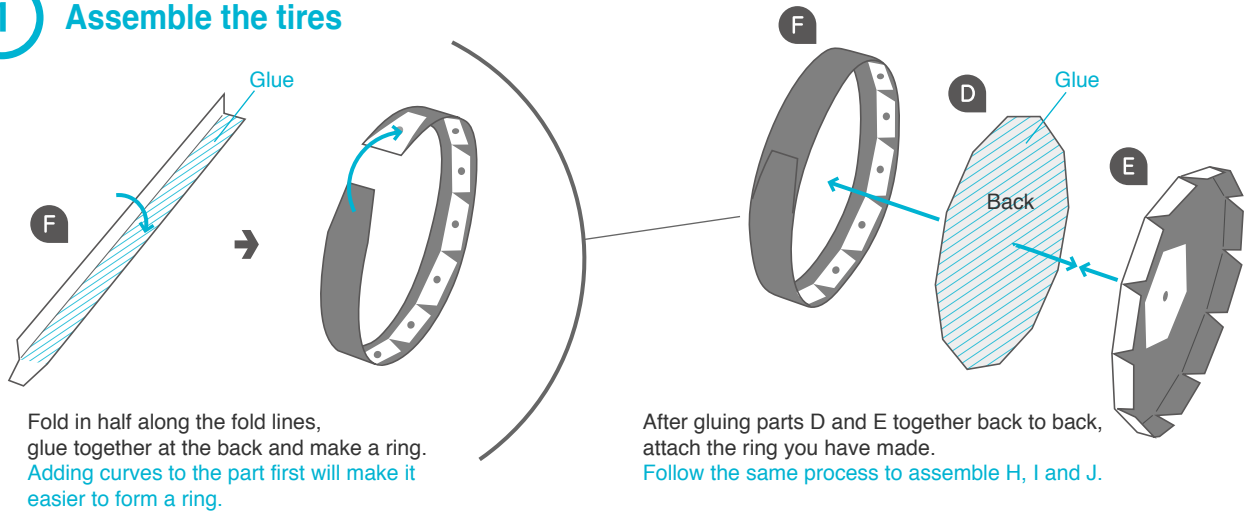
Scoring along the fold lines in advance with a dried up pen or a ruler with slightly sharp corners will result in a neater model.

*Be careful not to press too hard as the paper may tear.

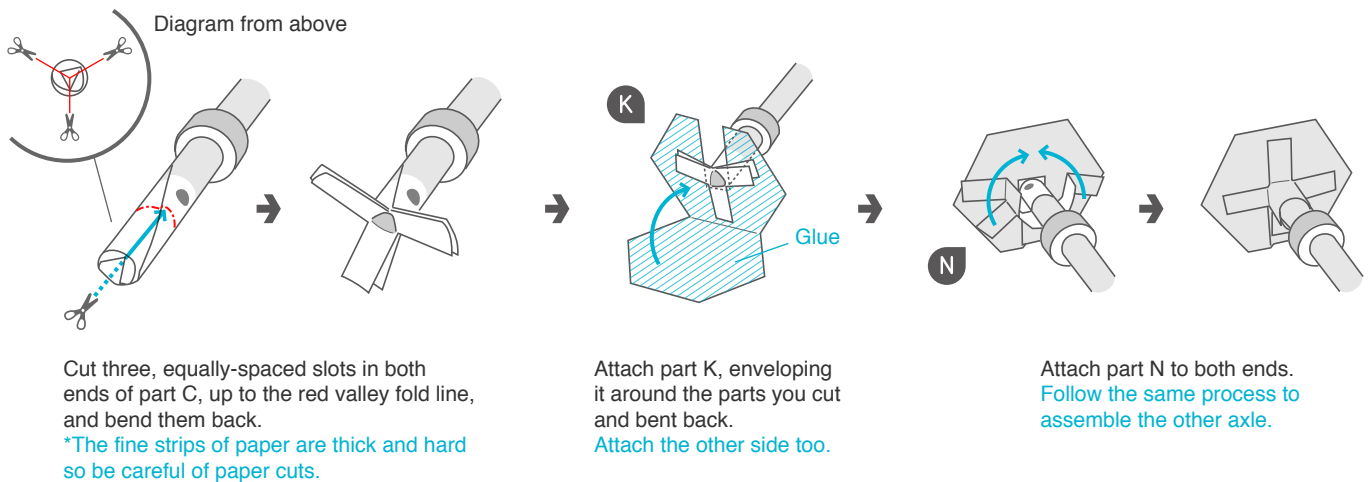
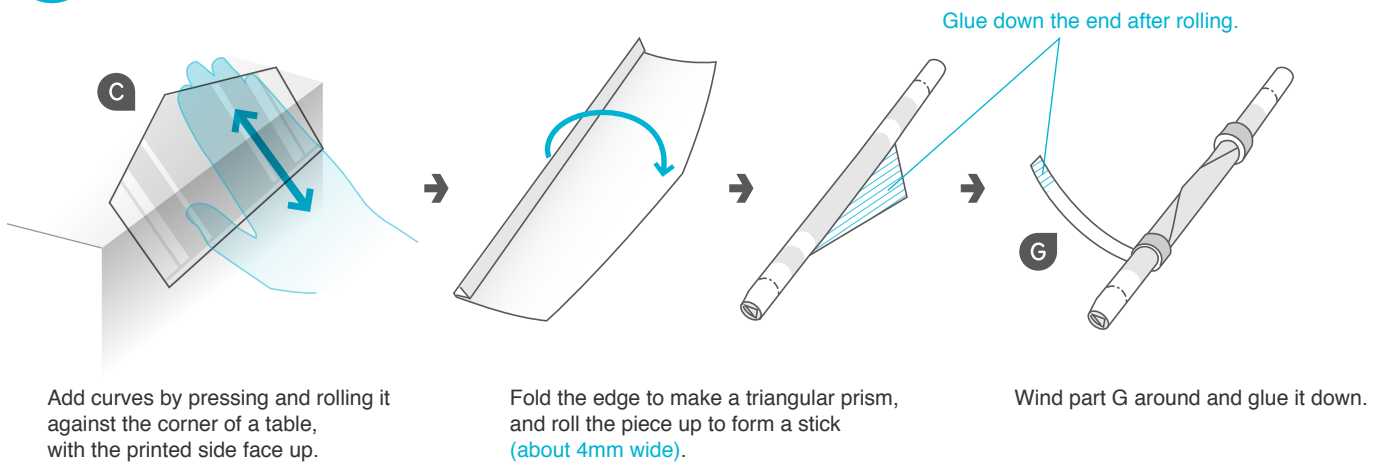
Caution

Keep scissors and glue away from small children.
Be careful not to cut your fingers when using scissors.

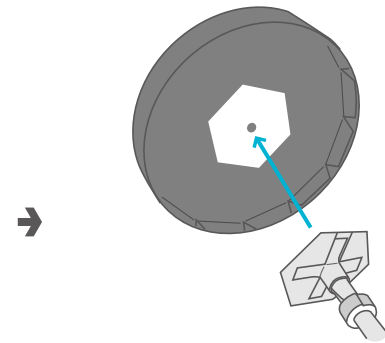
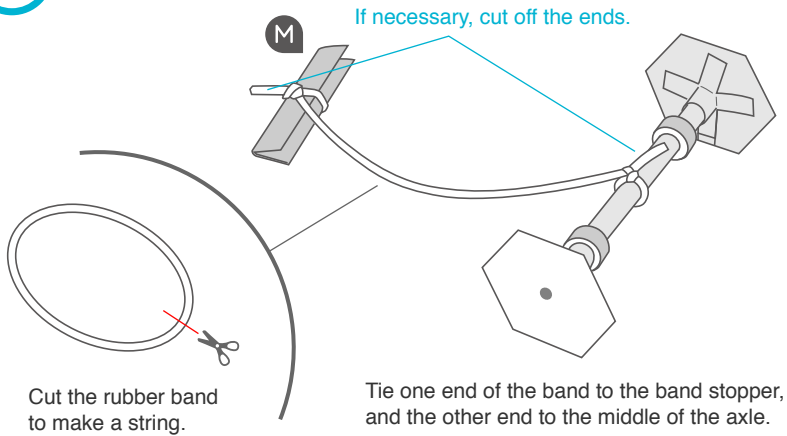
1 Assemble the tires



2 Assemble the axle



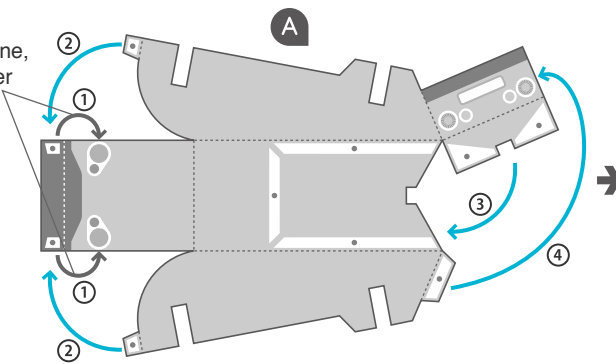
3 Assemble the front and back wheels



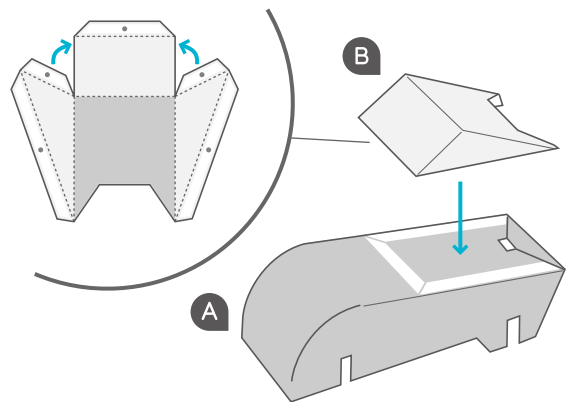
Attach the tires to both ends of the axle.
Follow the same process to assemble the back wheels.
*The axle of the back wheels does not have an rubber band attached.

4 Assemble the body

Follow the fold line, and glue together at the back.

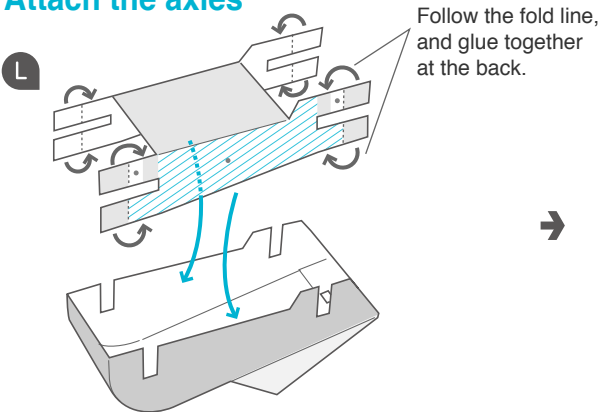


Assemble as shown in the diagram.

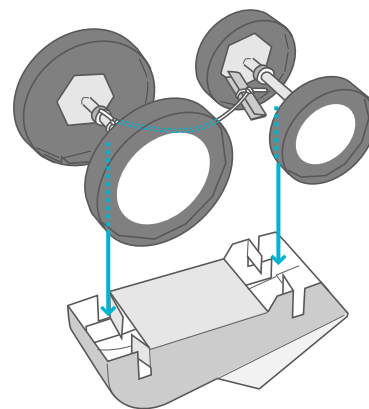


Assemble part B, and attach to part A.

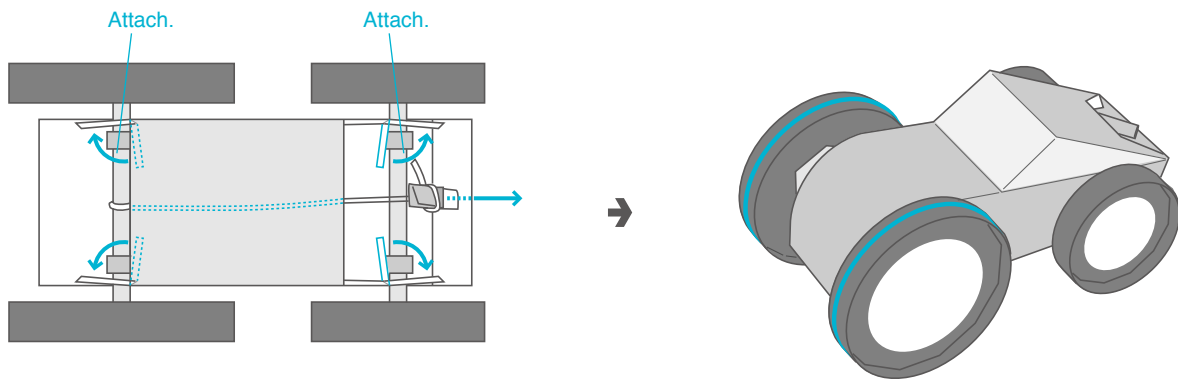
5 Attach the axles



Assemble part L, and attach the area with the diagonal lines to the inside of the body.



Fit the axles into the grooves of the body.
Check that the wheels spin smoothly.

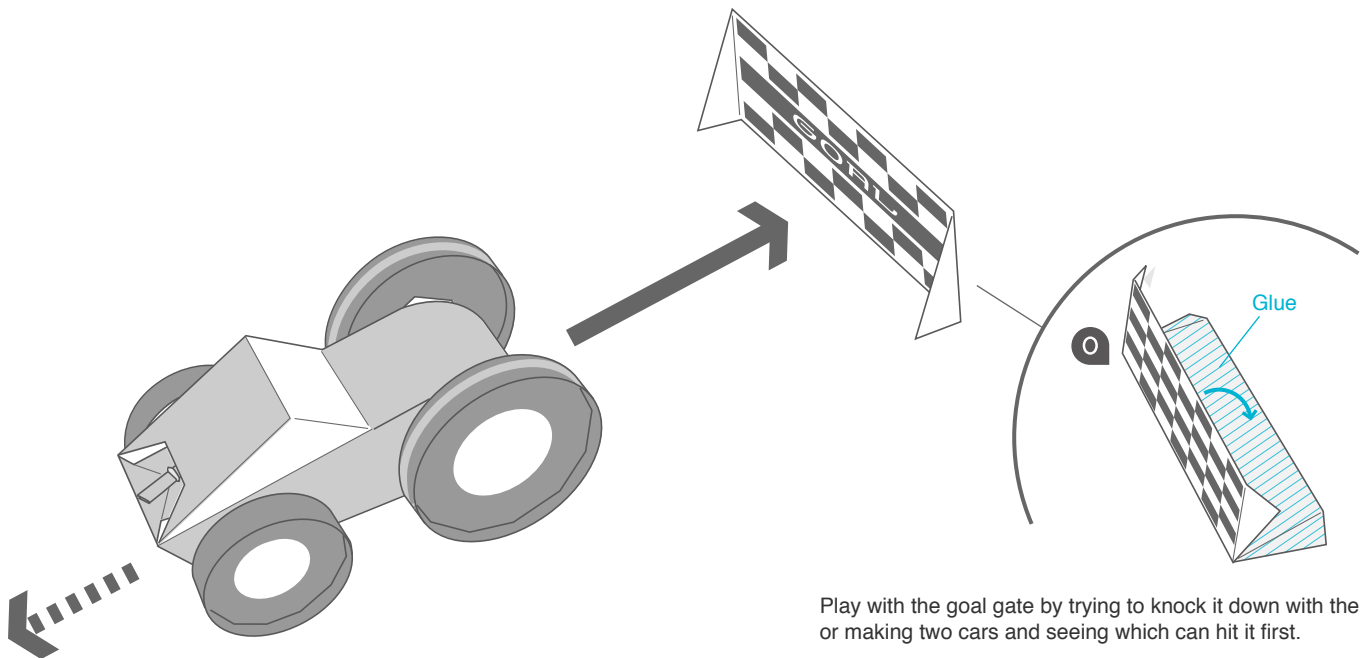


Pull the band stopper through the hole in part A.
Be careful that the band doesn't come undone.

Finally, wind the rubber band around the front wheels (with the bigger tires), and you're done!

How to play

Pull the car backwards along the ground, gently pushing down on the front wheels. Point the car in the direction you want it to run, let it go and watch it take off!
Be careful not to wind the band too tightly as it may snap or come untied.
Play with it on a flat surface such as a table or the floor (wooden floorboards work better than carpet).



Play with the goal gate by trying to knock it down with the car, or making two cars and seeing which can hit it first.

If your car doesn't run well, check the following points to repair it.

- | | |
|---|--|
| <input type="checkbox"/> Are the axles or tires stuck against the body? | <input type="checkbox"/> Are the wheels or tires bent? |
| <input type="checkbox"/> Has the band lost its elasticity? | <input type="checkbox"/> Is the band wound up too tightly? |
| <input type="checkbox"/> Has the band come loose from the tire? | <input type="checkbox"/> Is the band tangled up around the axle? |