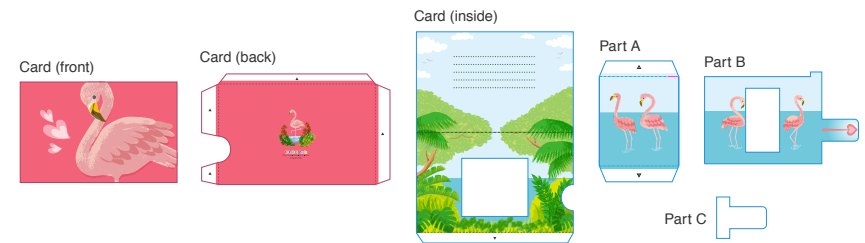
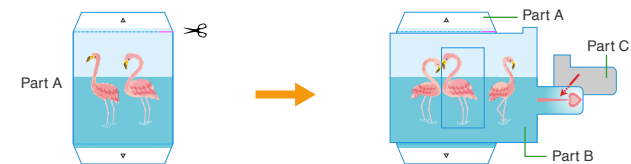




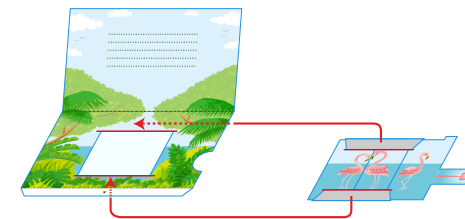
1 Cut out the parts and fold them along the fold lines on each.



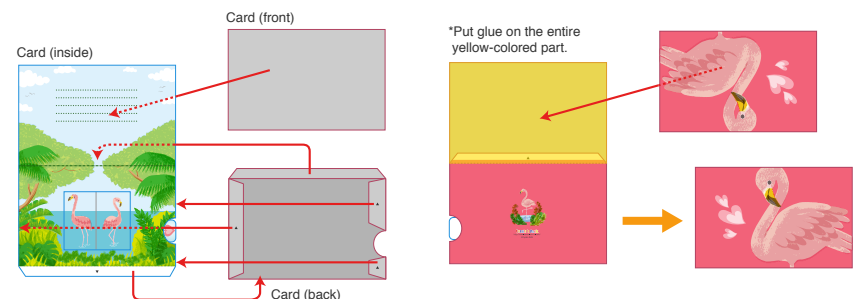
2 Cut a slot on part A, and assembled parts A to C together.



3 Fold along the valley fold lines on the parts you assembled in 2, and glue the reverse side of card (inside) to the reverse side, aligning the card with the red lines shown in the diagram.



4 Glue card (back) to the reverse side of card (inside), glue card (front), and you're done! When gluing, take care to follow this order, because if you don't, the glue tabs will remain visible after completion.



Assembly Instructions

..... **Mountain fold** (dotted line)
*Make a mountain fold.

- · - · - **Valley fold**
(dashed and dotted line)
*Make a valley fold.

▲ **Black triangle**
*Glue here.

△ **White triangle**
*Glue the back

— **Scissors line** (solid line)
*Cut along the line.

— **Cut in line** (solid line)
*Make a cut.

● **Cut out**
*Cut out.

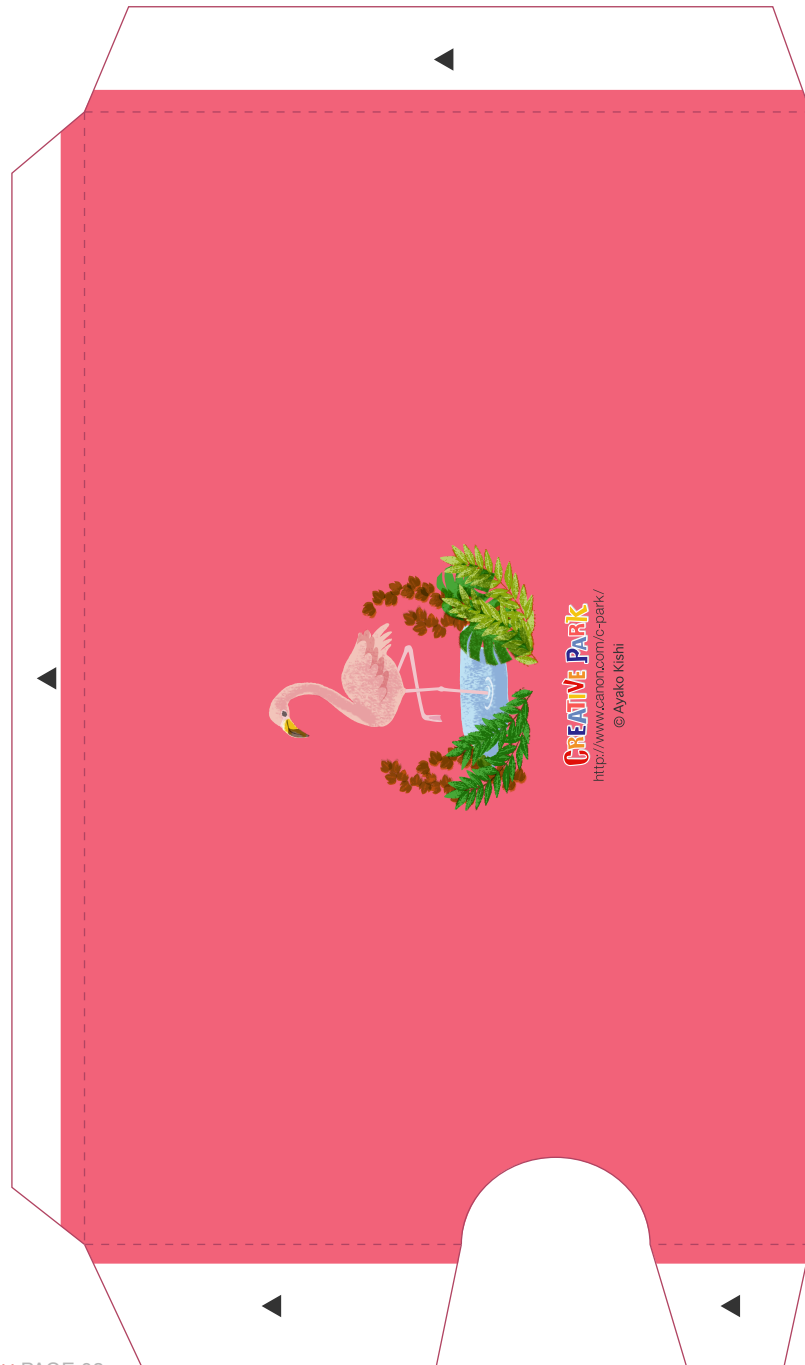


You will need

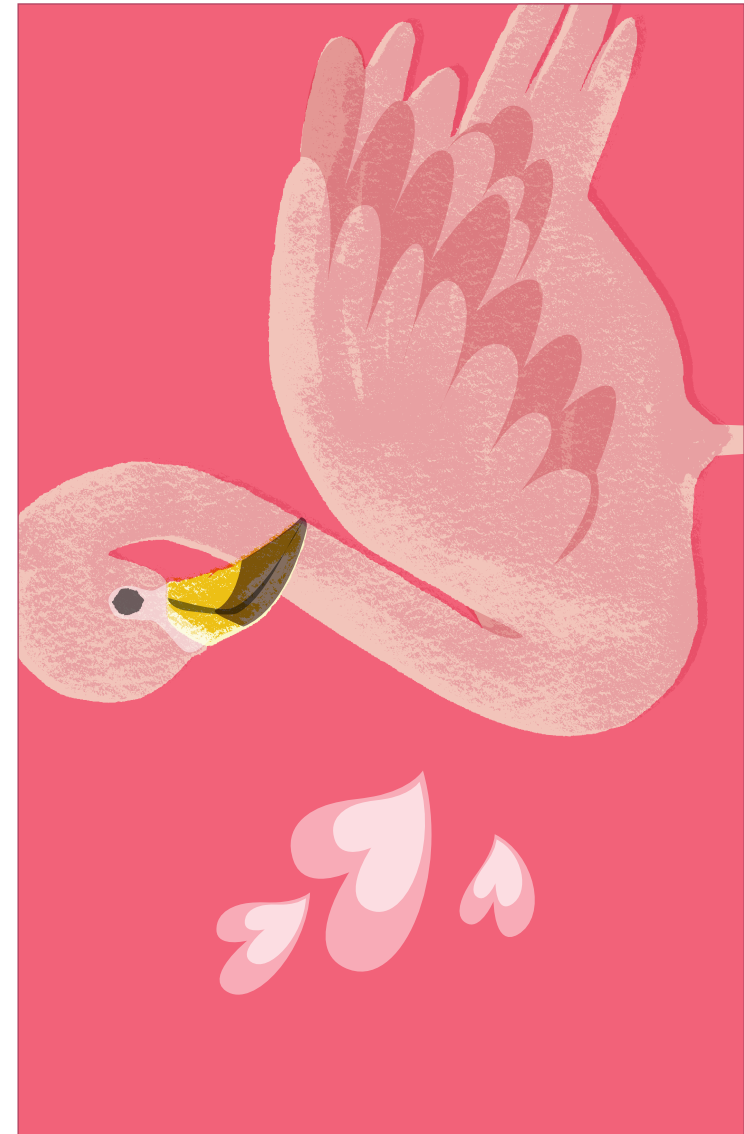
scissors, paste, a used ballpoint pen (tracing along the fold lines makes them easier to fold)



Caution: Glue, scissors, and other tools may be dangerous to young children so be sure to keep them out of the reach of young children.

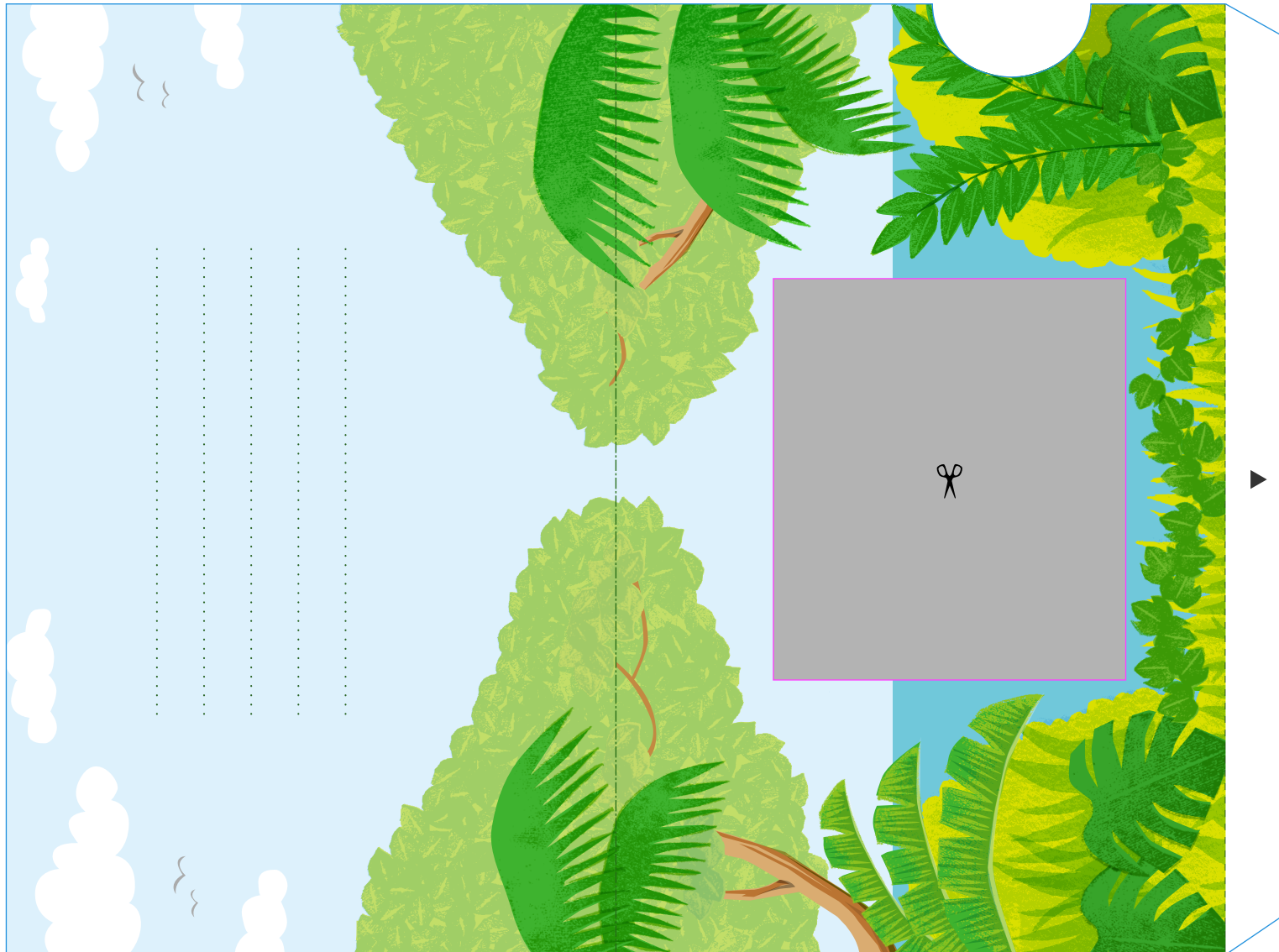


● Card (front)

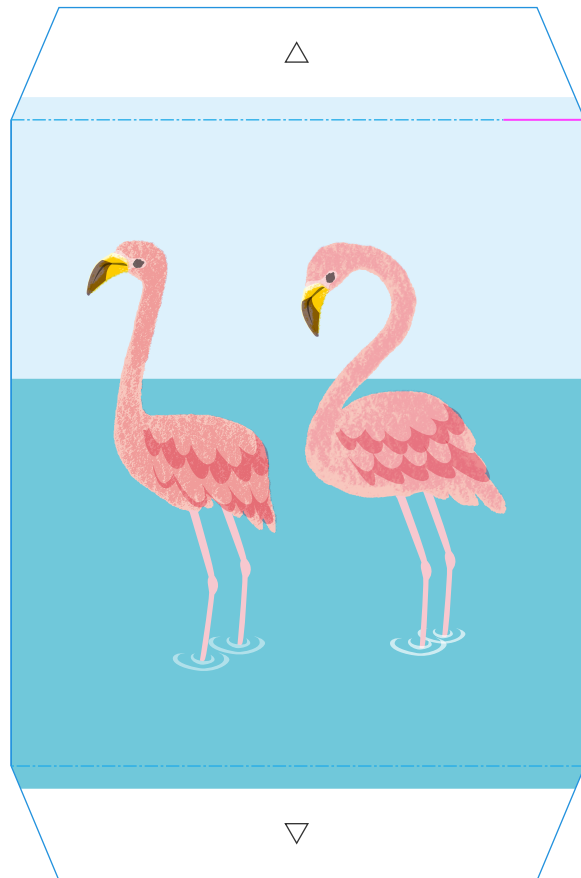


● Card (back)

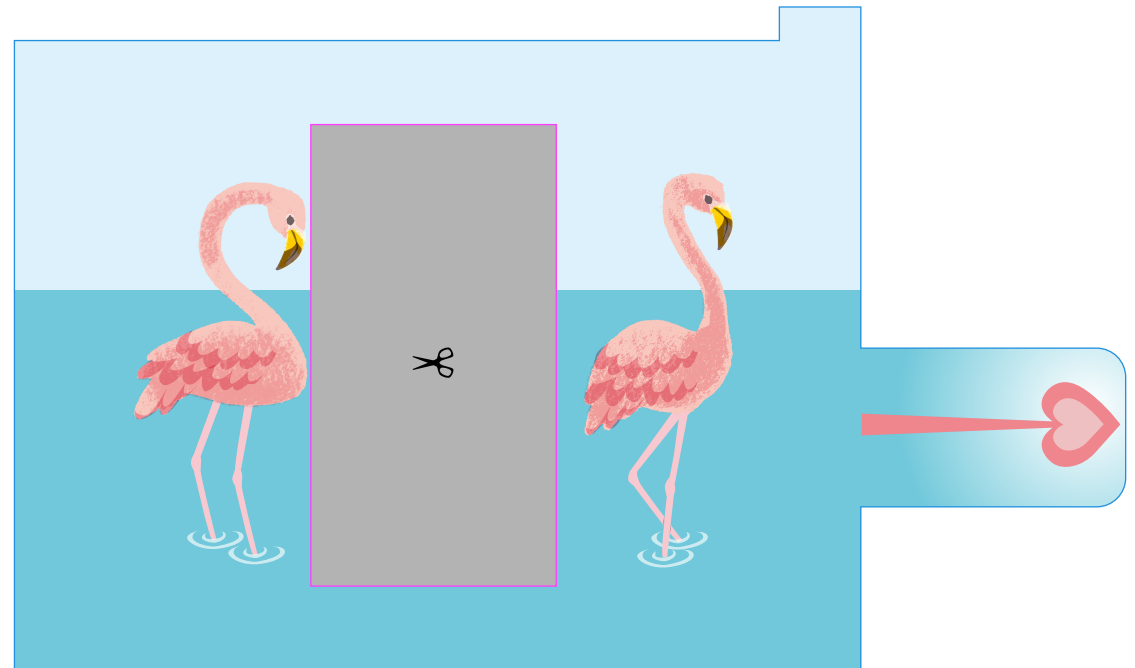
● Card (inside)



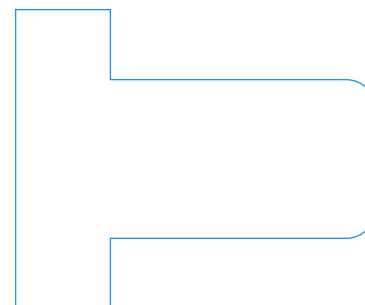
● Part A



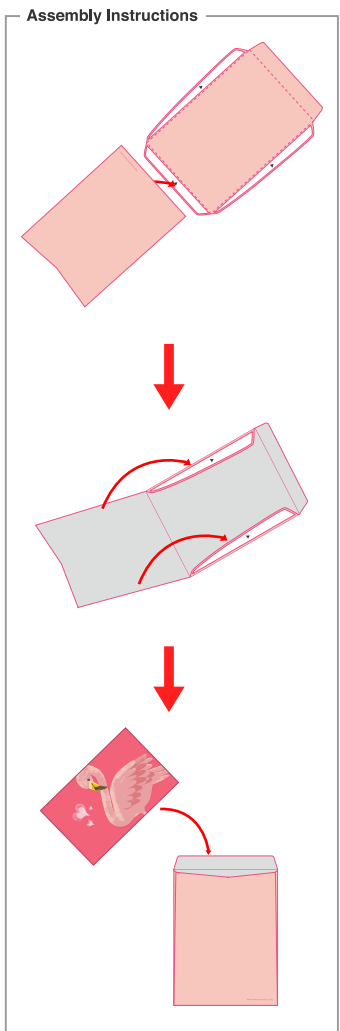
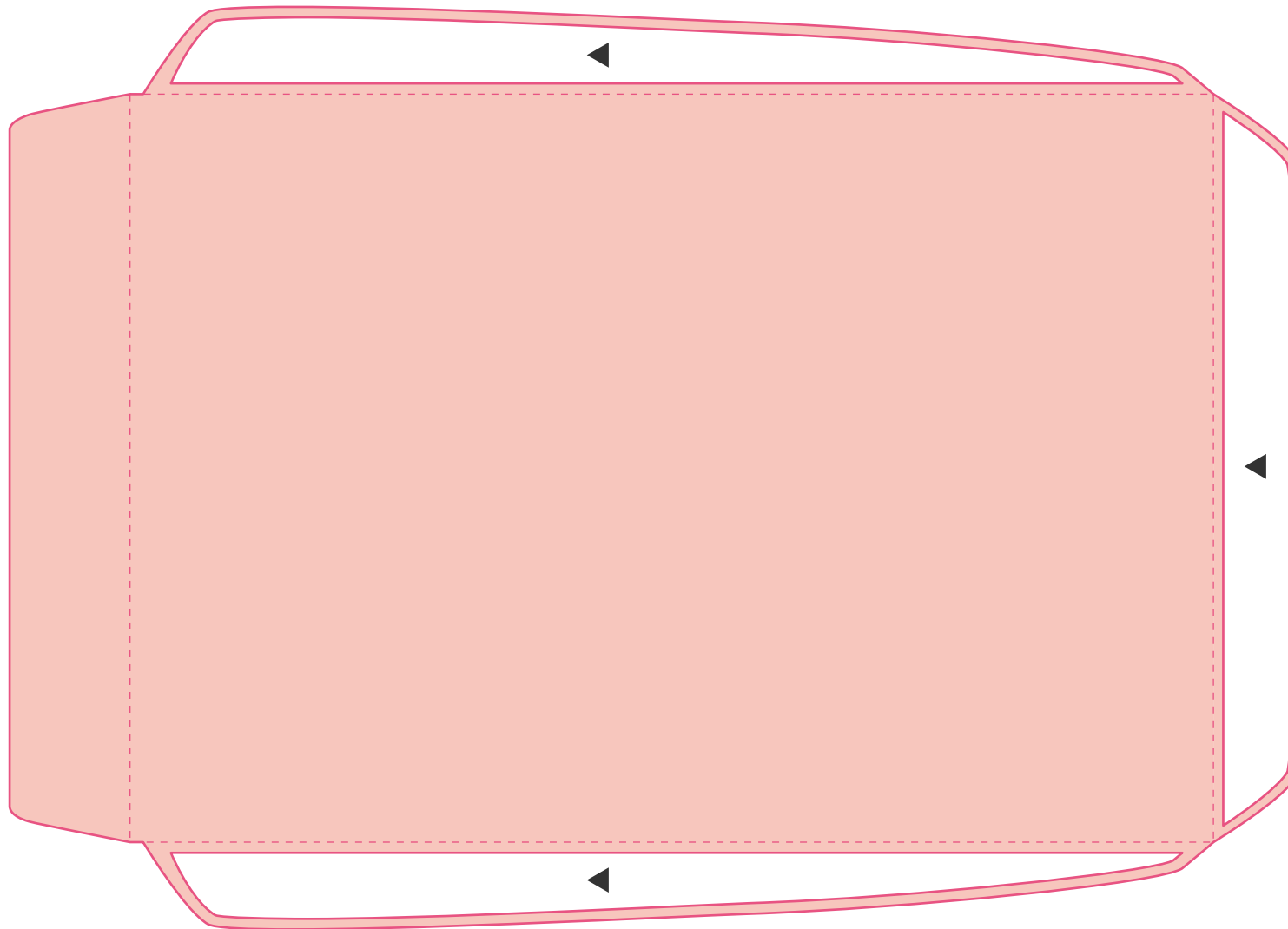
● Part B



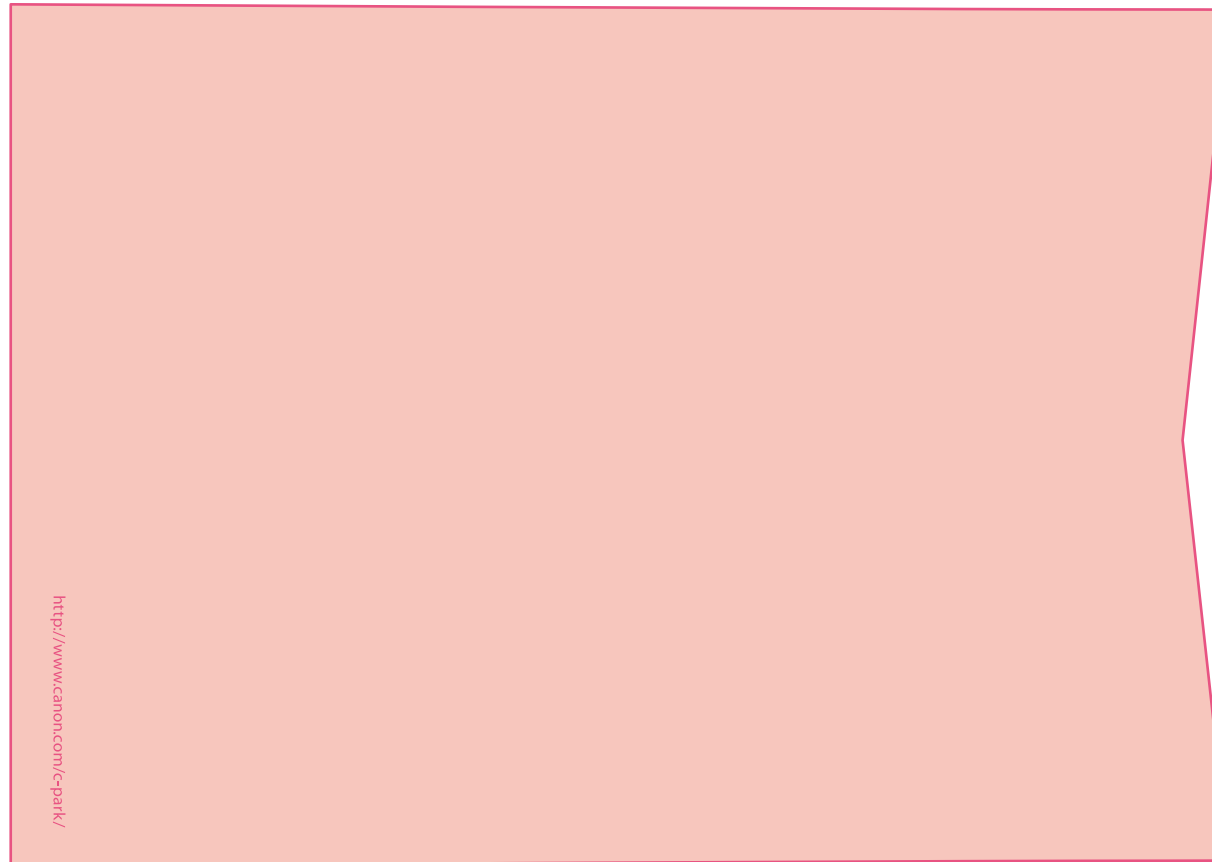
● Part C



● Envelope



● Envelope



● Stickers

