



Assembly Instructions

..... **Mountain fold**(dotted line) ——— **Scissors line**(solid line)
*Make a mountain fold. *Cut along the line.

▲ **Black triangle**
Glue here

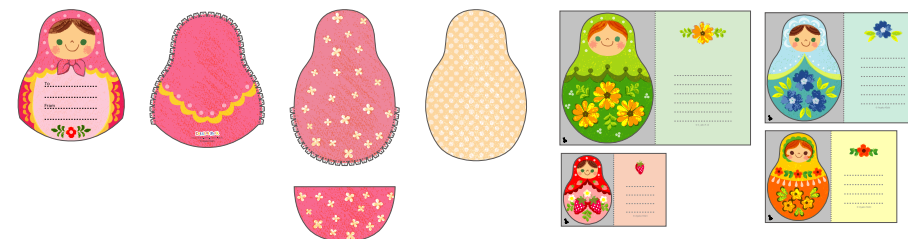


scissors, paste, a used ballpoint pen (tracing along the fold lines makes them easier to fold)

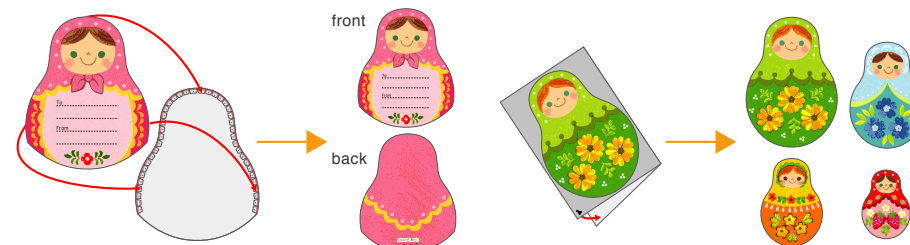


Caution: Glue, scissors, and other tools may be dangerous to young children so be sure to keep them out of the reach of young children.

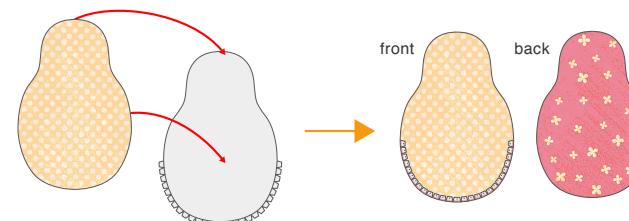
1 Cut out the parts and fold them along the fold lines on each.



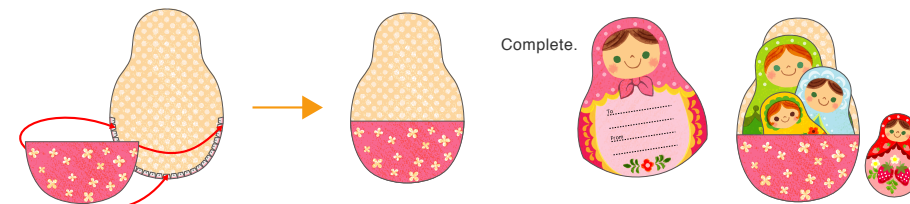
2 Glue matryoshka doll A (front) to the glue tab on matryoshka doll A (back). Fold the cards in half, apply glue, and cut out each shape.



3 Glue the backs of matryoshka doll B (back) and matryoshka doll B (insert) together. When gluing them together, match up the height of the heads of the two parts.



4 Glue matryoshka doll B (front) to the glue tab on matryoshka doll B (back), and it's done! Write a message on the cards, insert them into the matryoshka doll case, and send it to a friend!



● Matryoshka doll A (front)



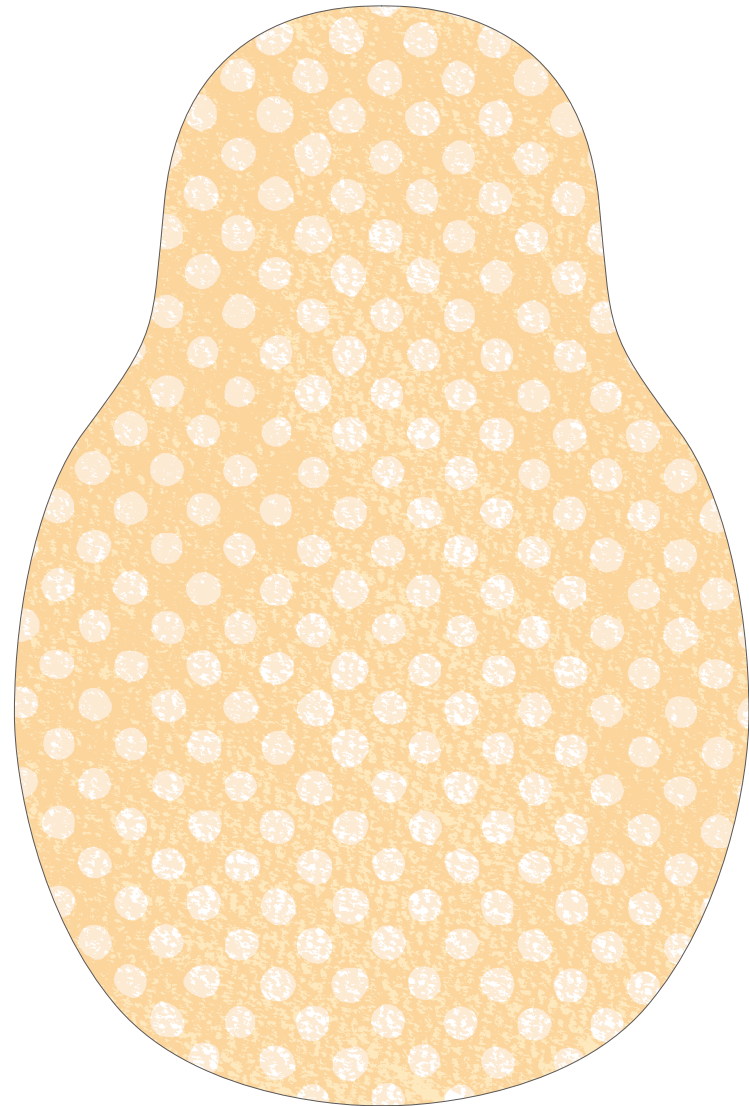
● Matryoshka doll A (back)



● Matryoshka doll B (back)



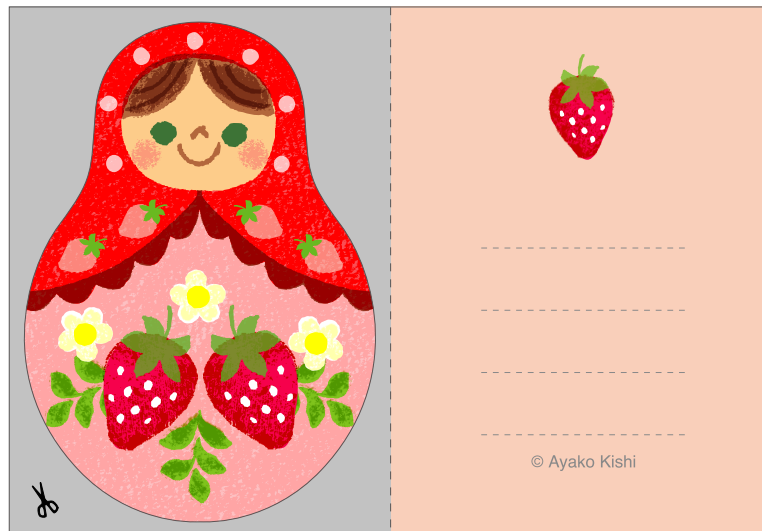
● Matryoshka doll B (insert)



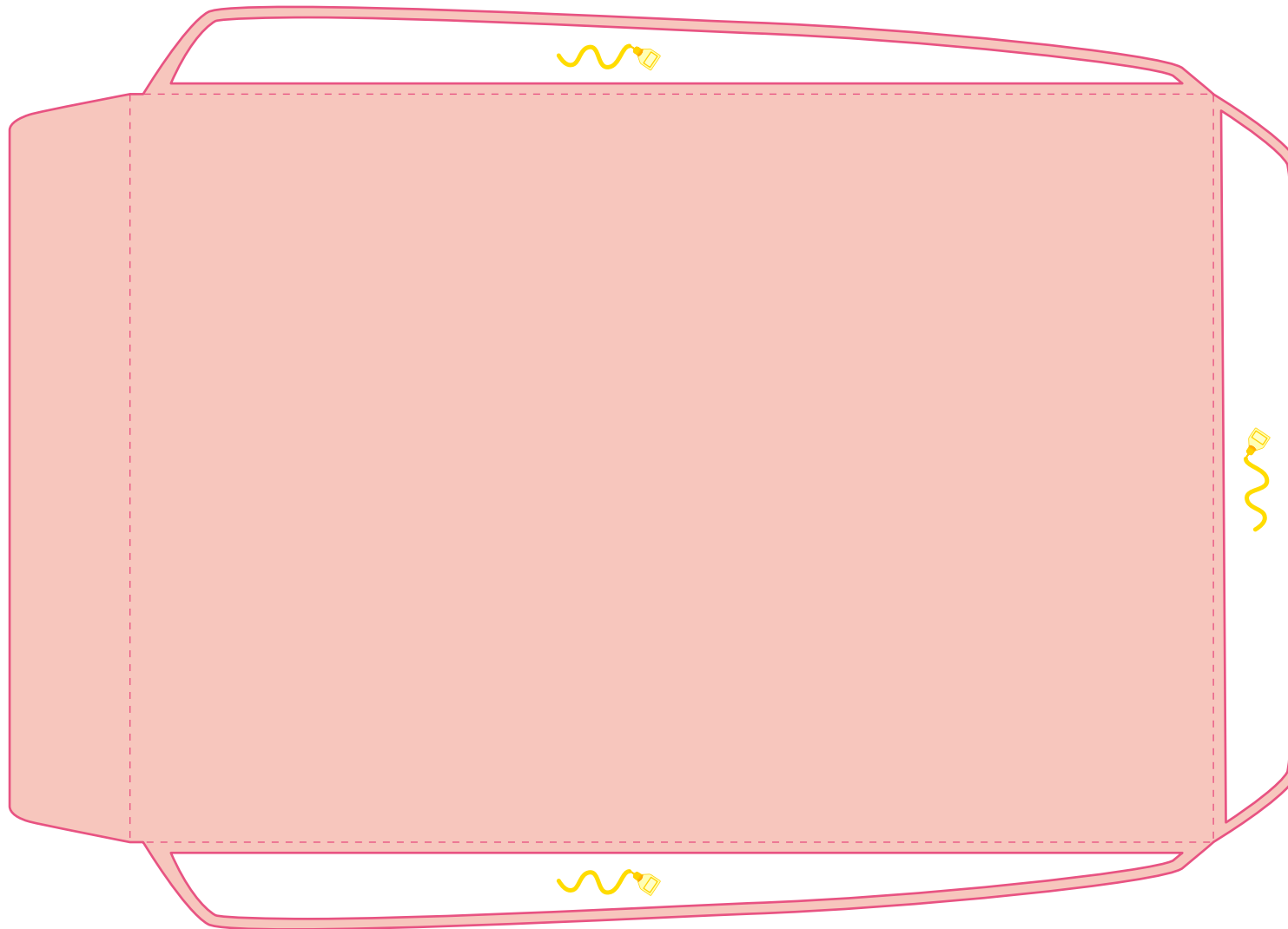
● Matryoshka doll B (front) ● Card



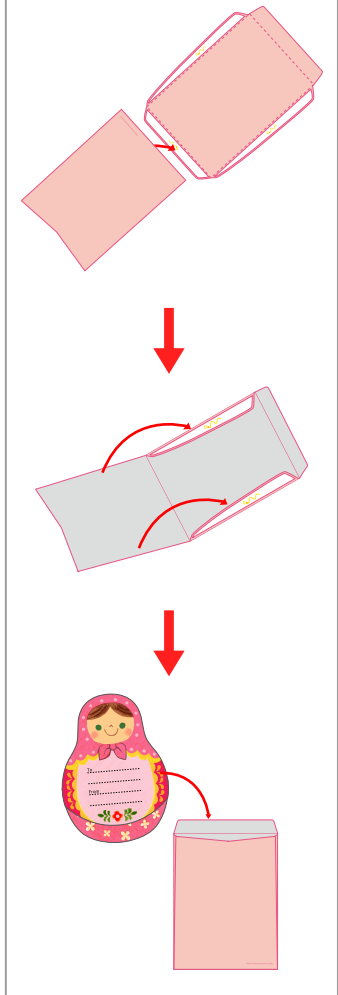
● Card



● Envelope



Assembly Instructions



● Envelope



● Stickers

