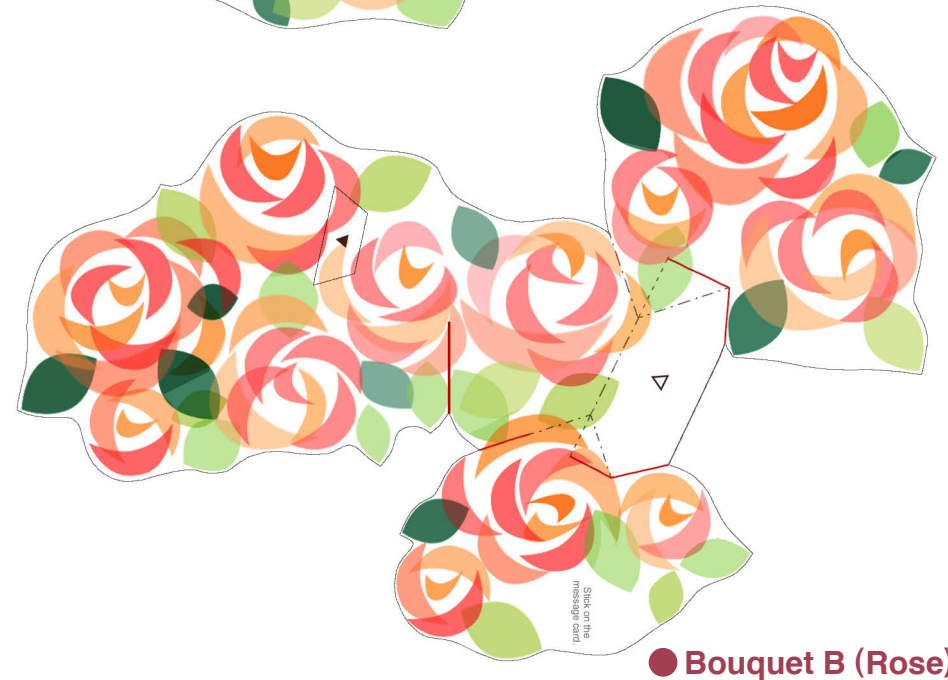
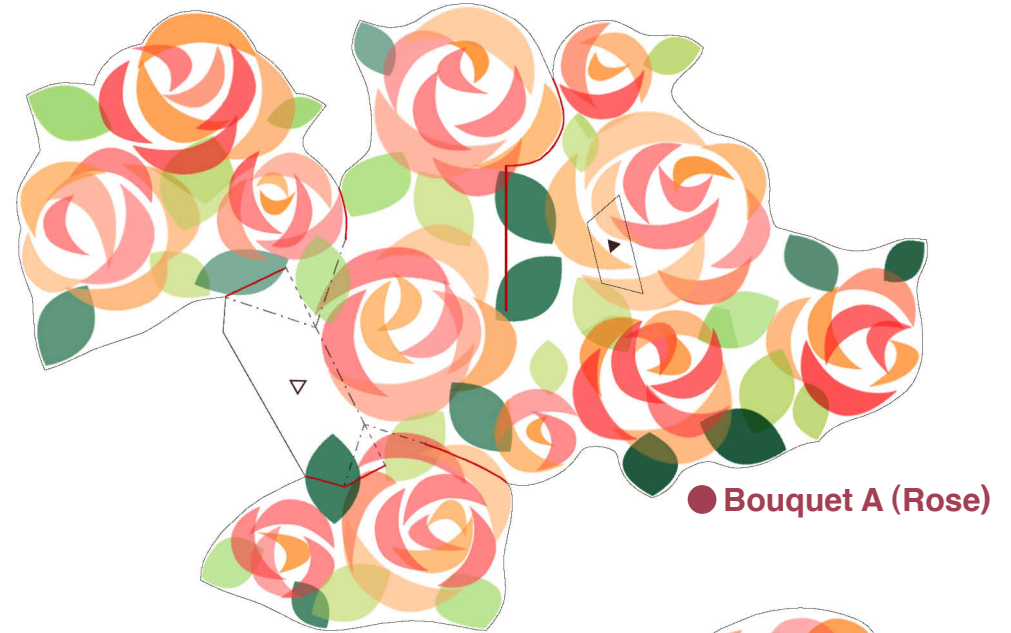




<http://www.canon.com/c-park/en/>



Assembly Instructions

- | | |
|---|---|
| <p>..... Mountain fold(dotted line)
*Make a mountain fold.</p> | <p>—— Scissors line(solid line)
*Cut along the line.</p> |
| <p>- · - · - Valley fold
(dashed and dotted line)
*Make a valley fold.</p> | <p>— Cut in line(solid line)
*Make a cut.</p> |



You will need

scissors, paste, a used ballpoint pen (tracing along the fold lines makes them easier to fold)

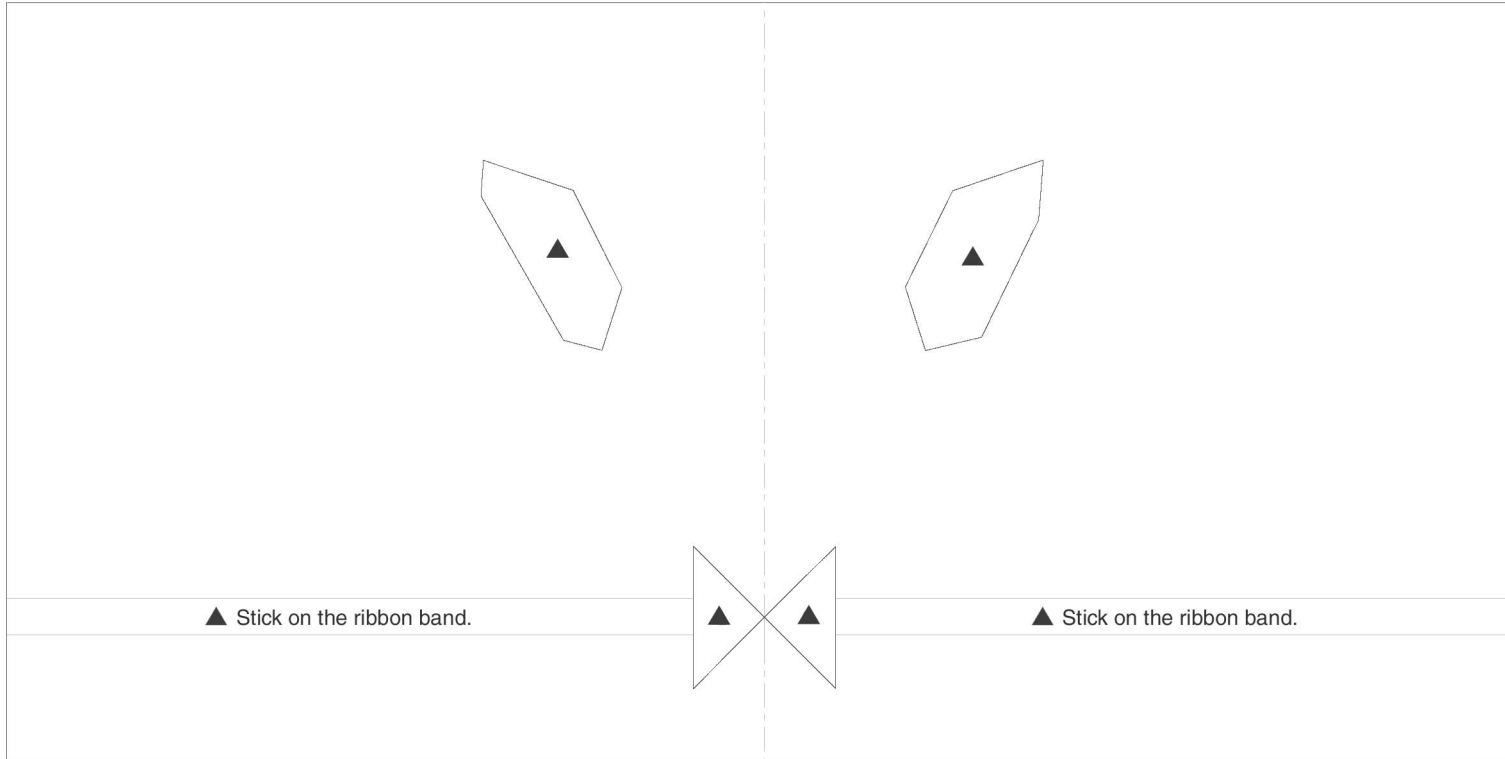


Caution:Glue, scissors, and other tools may be dangerous to young children so be sure to keep them out of the reach of young children.

Canon Pop-up Card (Bouquet) : Pattern

Canon® is a registered trademark of Canon Inc. © HIROKO

● Base



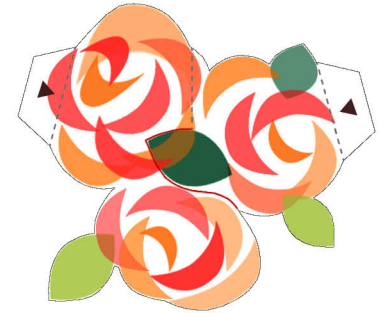
● Ribbon band (Rose)



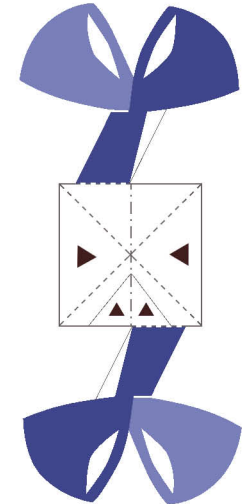
● Message card



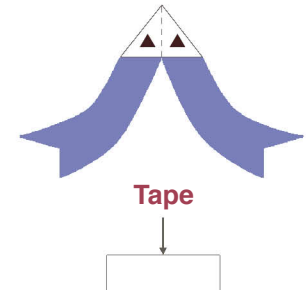
● Bouquet C (Rose)



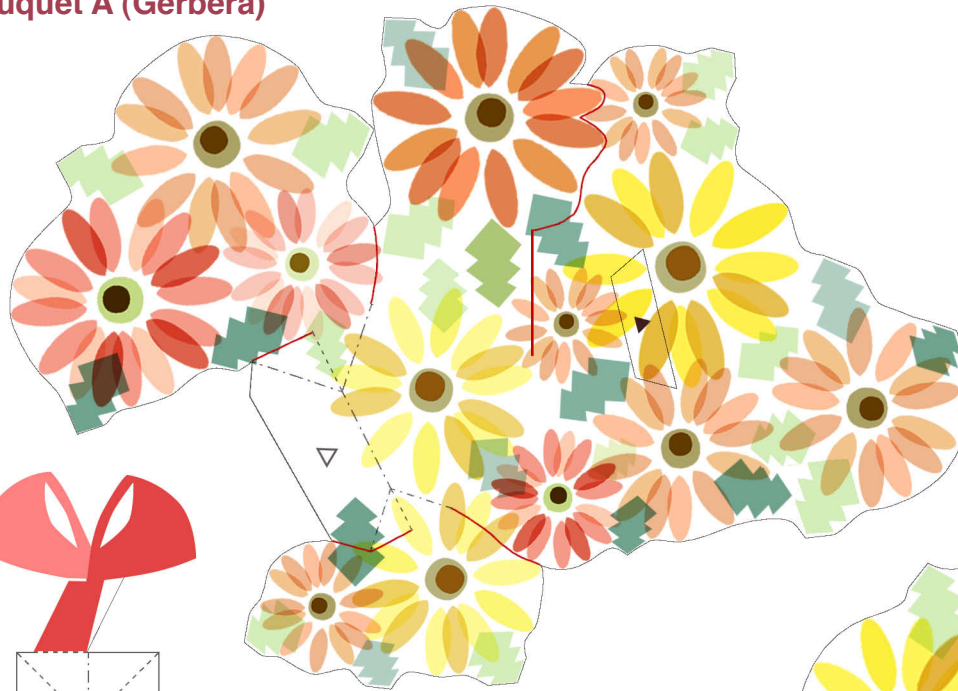
● Upper ribbon (Rose)



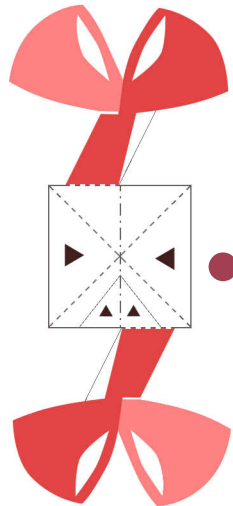
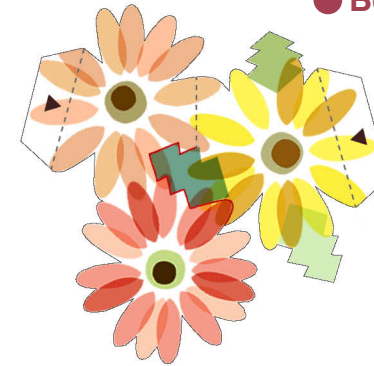
● Lower ribbon (Rose)



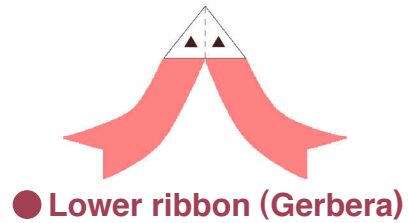
● Bouquet A (Gerbera)



● Bouquet C (Gerbera)



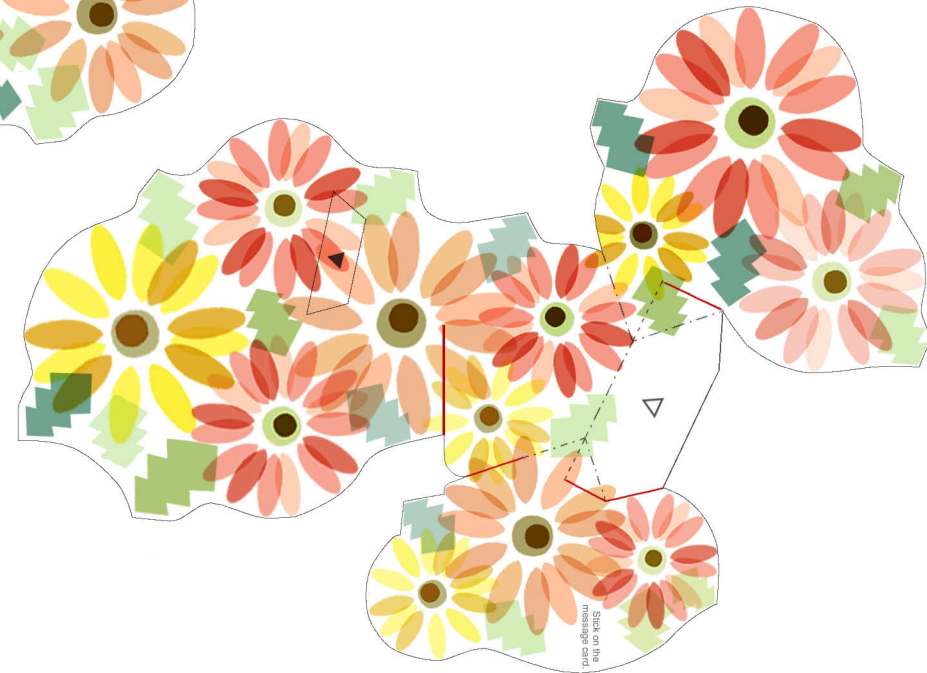
● Upper ribbon (Gerbera)



● Lower ribbon (Gerbera)



● Ribbon band (Gerbera)

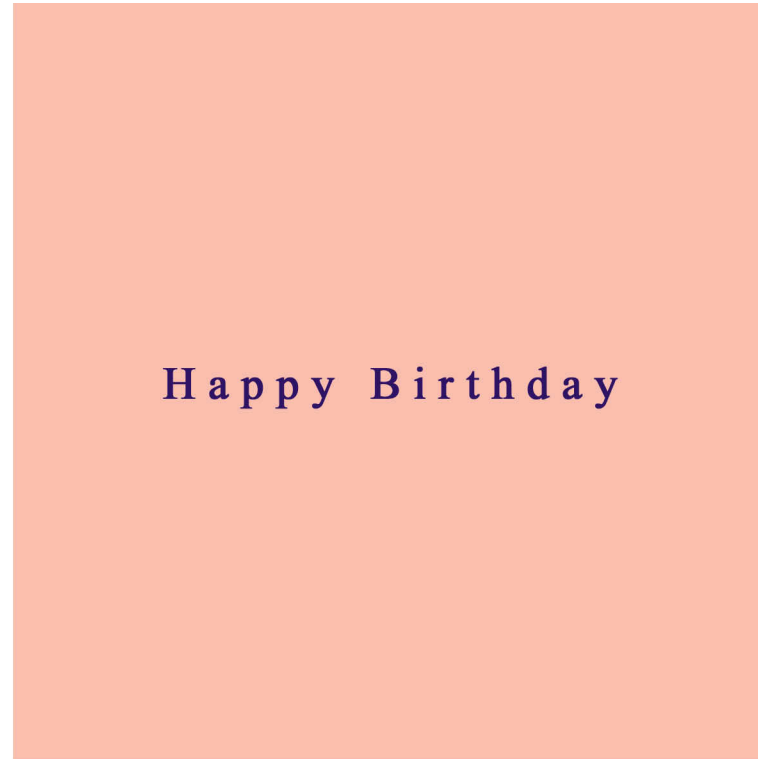


● Bouquet B (Gerbera)

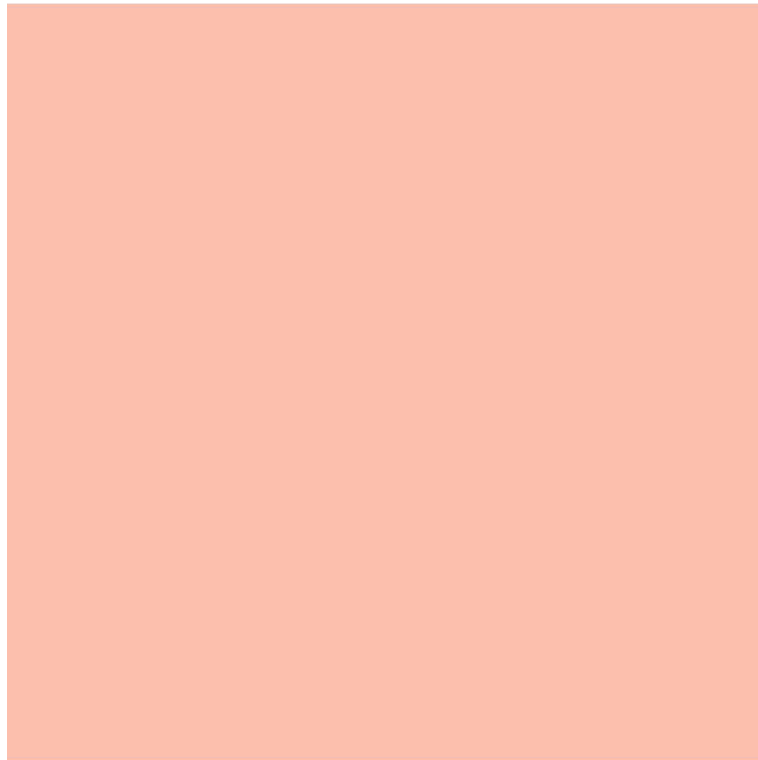
● Front cover (Mother's Day)



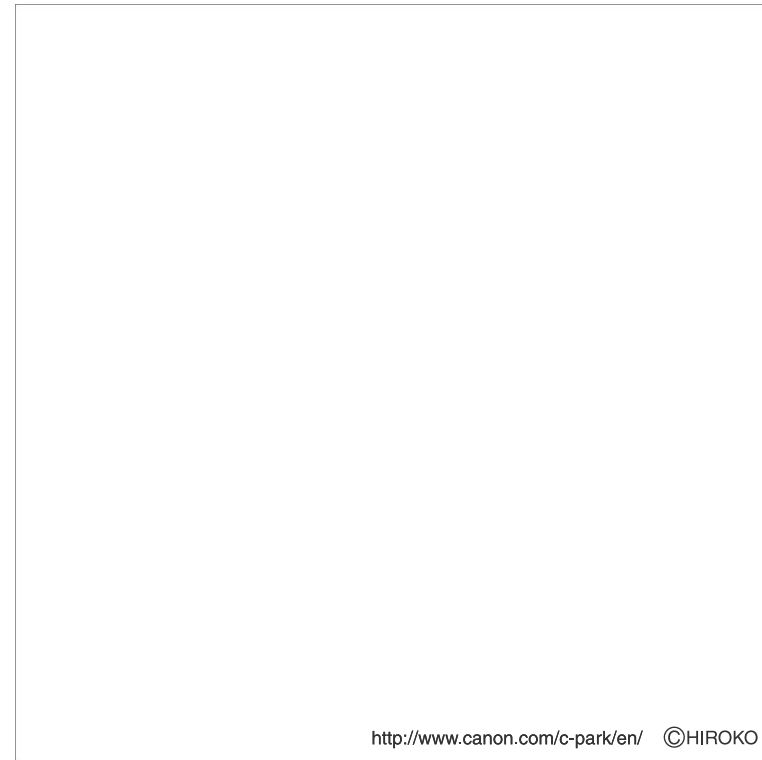
● Front cover (Happy Birthday)



● Front cover (Plain)



● Back cover



● Envelope

