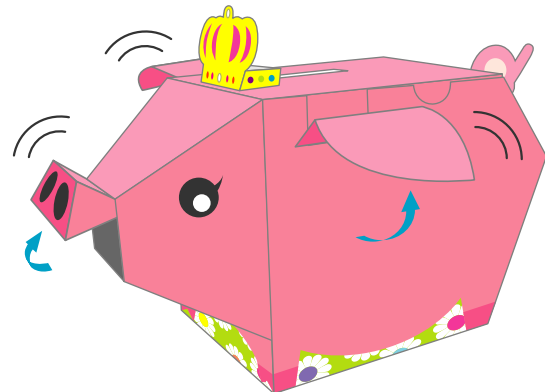
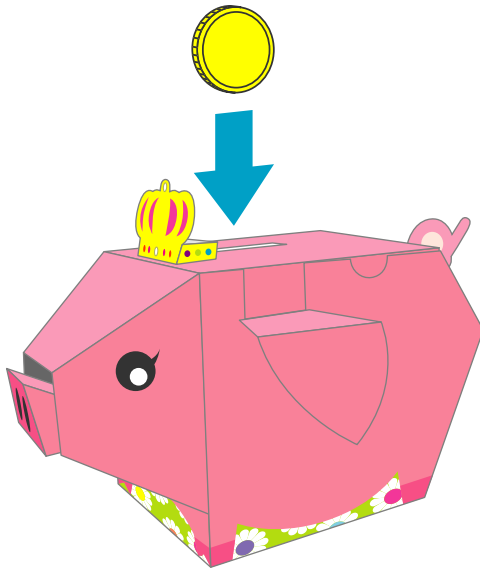


Drop in a coin and watch the money box move!
It's so cute that you won't be able to stop saving!

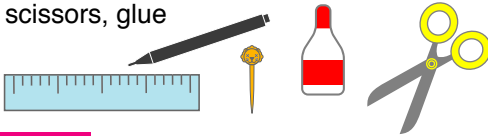
The movements work better with heavier coins.




His nose and ears flap up and down!

Tools

Ruler, a sharp, pointed object, toothpicks, scissors, glue



Symbols

- Mountain fold -----
- Valley fold - - - - -
- Cut out _____
- Cut a slit _____
- Glue spot 

Tips for a neater finish

☆ Line a ruler up with the dotted lines, and use a sharp, pointed object (eg. a dried-up pen) to score along the fold lines. Carefully make mountain and valley folds to make clean creases on each part.

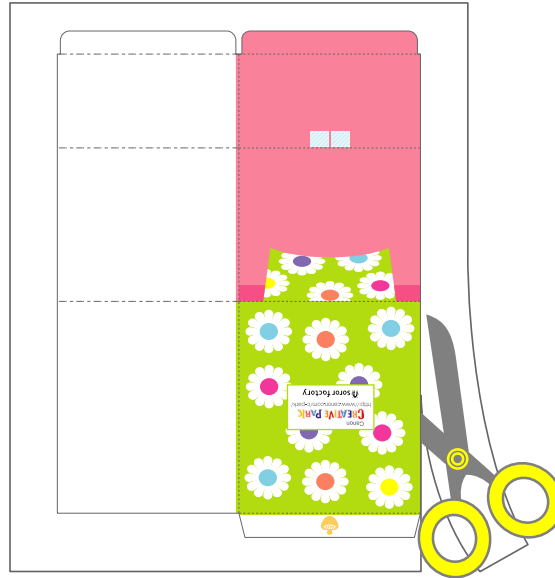
☆ If using craft glue, pour some glue onto scrap paper and use a toothpick to apply it in a thin layer. This will achieve a neater finish.

Caution

This paper craft uses glue, scissors, etc, so please be sure to keep them out of reach of children while working.

Cut & Fold

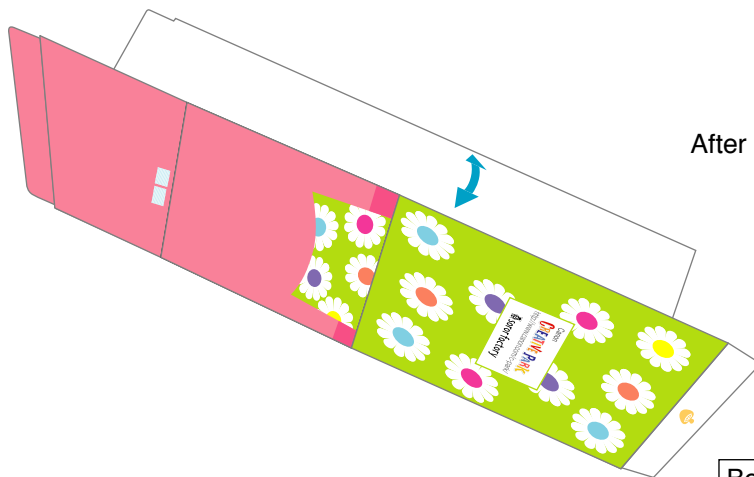
Carefully cut out all the parts, and fold and make creases along the fold lines.



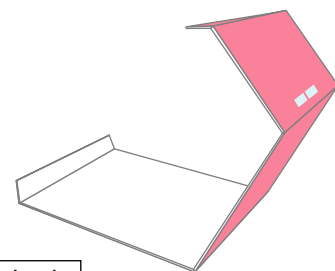
Glue

Body

Put glue on the inside, fold in half, and attach together.



After gluing, fold and make sharp creases.



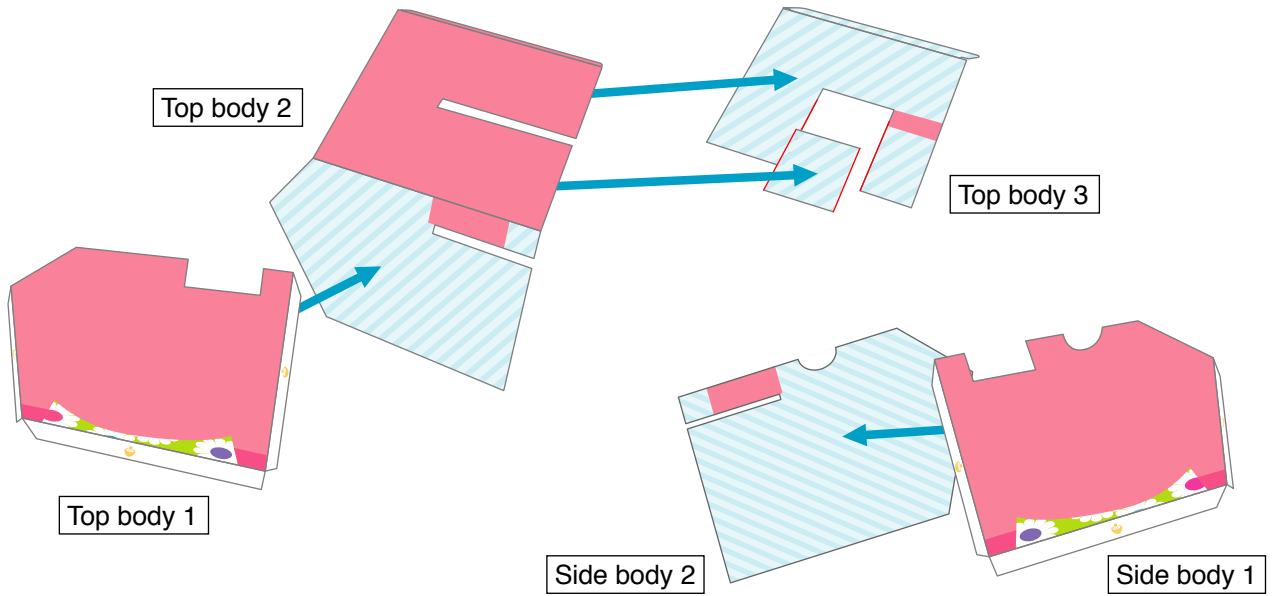
Bottom body

! When gluing large areas, apply a thin layer of glue and be sure to work quickly.

Glue

Body

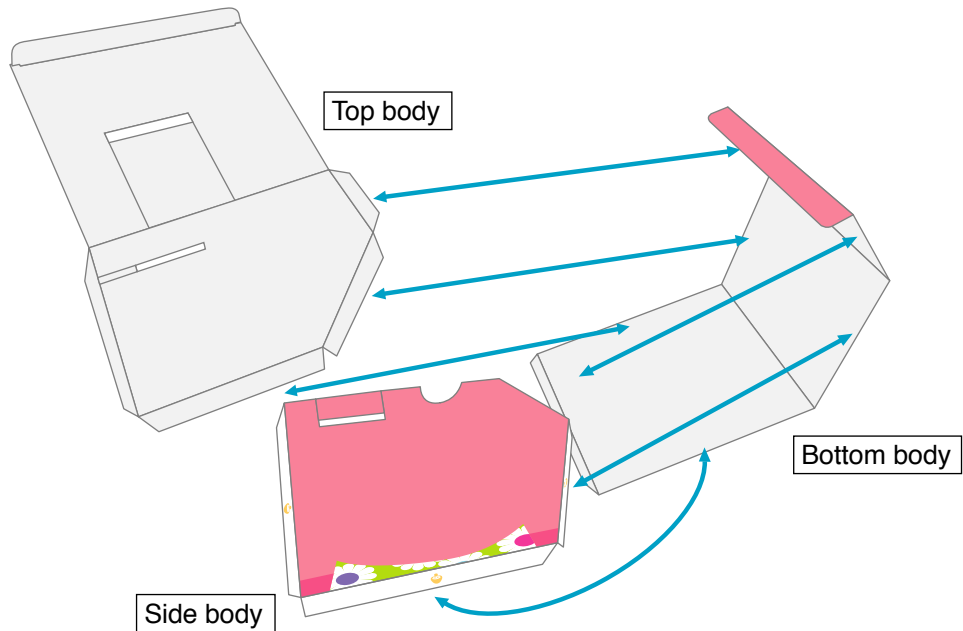
Put glue on the side and top parts, and attach them together.



Glue

Body

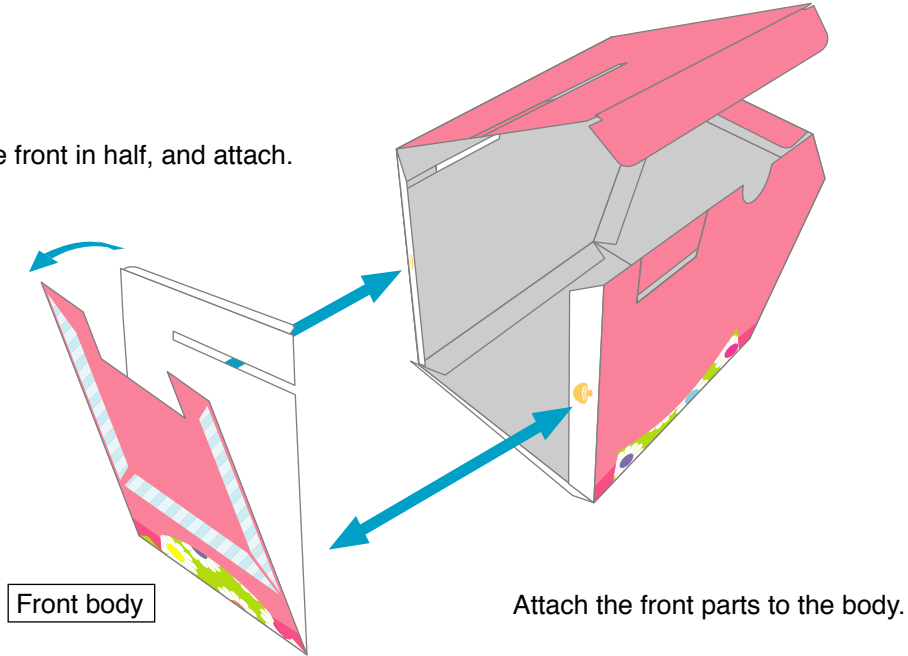
Attach the bottom, side and top parts together.



Glue

Body

Fold the front in half, and attach.

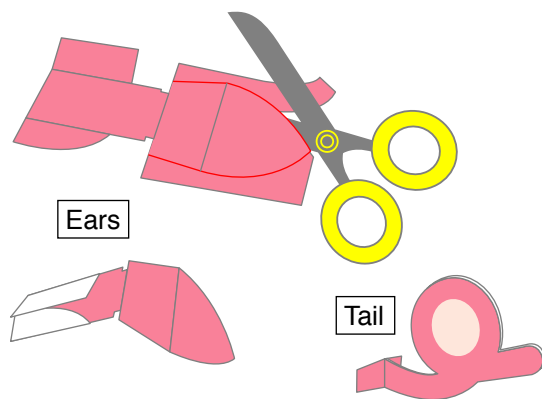


Attach the front parts to the body.

Glue

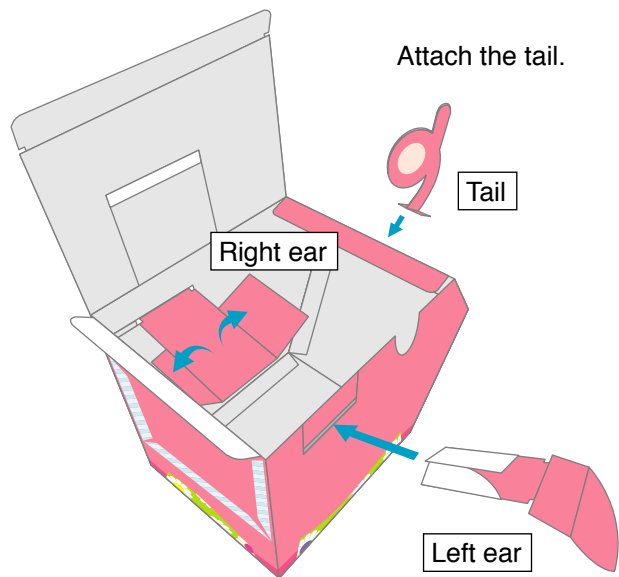
Ears & Tail

For the ears and tail, after gluing the pieces together, cut them out along the lines on the front.



After cutting out, fold and make sharp creases.

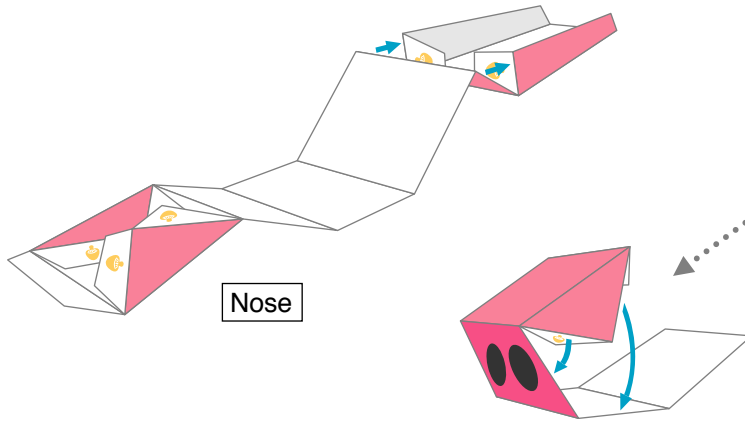
Attach the tail.



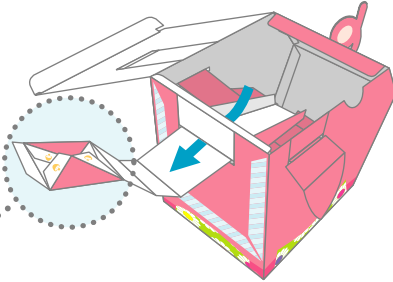
Insert the ears into the holes on the side, and then open up the "wings" inside.

Glue Device

First, assemble the device.



Next, fold up the nose, and insert it into the hole on the body's front.

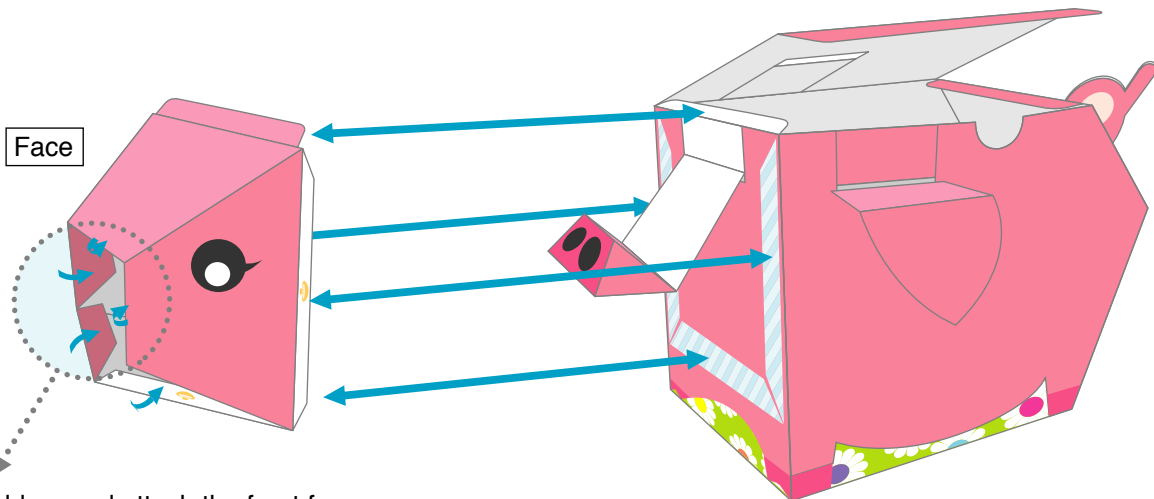


Finally, with the nose outside the body at the front, assemble the tip of the nose and glue it together.

! This part is the device to make the pig move, so be sure the creases are sharp and neat.

Glue Face

Assemble the face, put the nose inside it, and attach the face to the body.

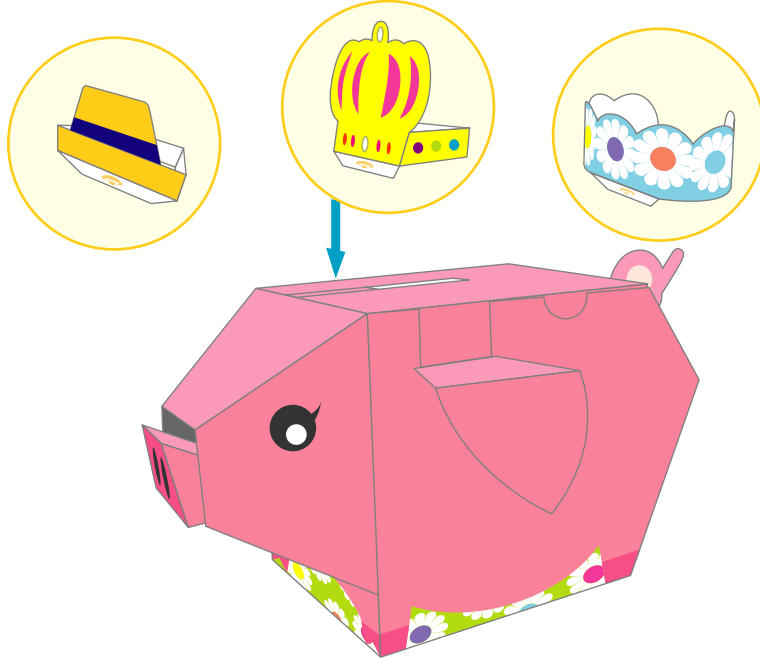


Fold up and attach the front face.

Glue

Bonus
Parts

Choose a decoration to put on his head.



Adjust

Device

Check that the ear device is opened up properly,
and is beneath the nose device.

Push the nose in
(or pull it out) so that
it sticks out just a little bit
from the hole in the face.

