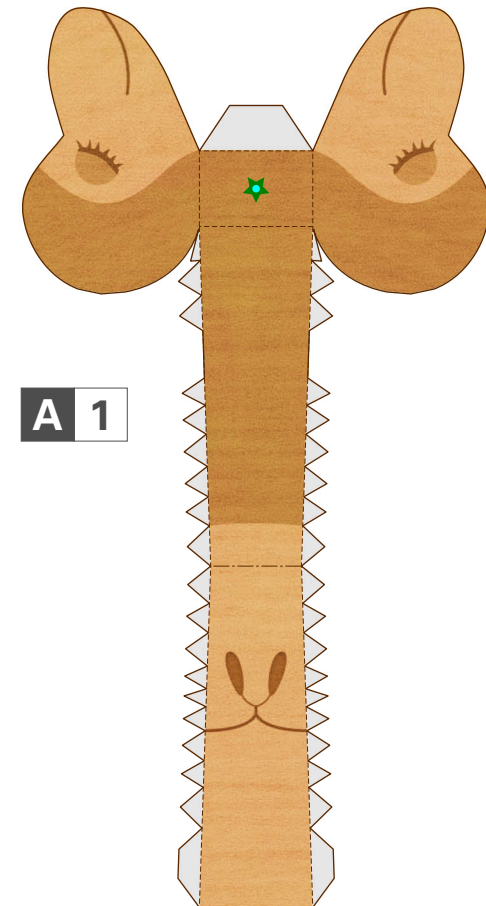


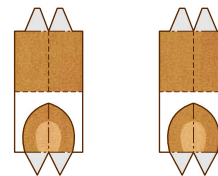


A 2



A 1

A 3 x2



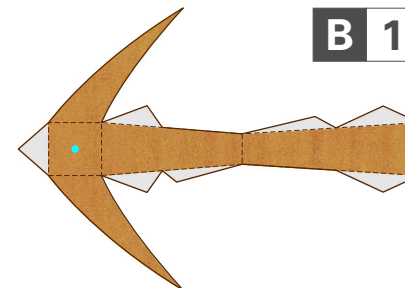
● **Pattern:** 6 sheets ● **Assembly Instructions:** 4 sheets ● **Number of parts:** 41

● **You will need:** Scissors, glue, strong adhesive, a ruler, a used ball-point pen
String (a fairly strong type of thread. The color is up to you, but we recommend gray, brown, or yellow.)

● **Assembly tip:** Trace along the folds with a ruler and a used pen (no ink) to get a sharper, easier fold.

----- Mountain fold	- - - - - Valley fold	———— Scissors line
Glue spot	✂ Cut out	— Cut in line
● Hole for threading string through (use an old pen or other object to make the hole.)		

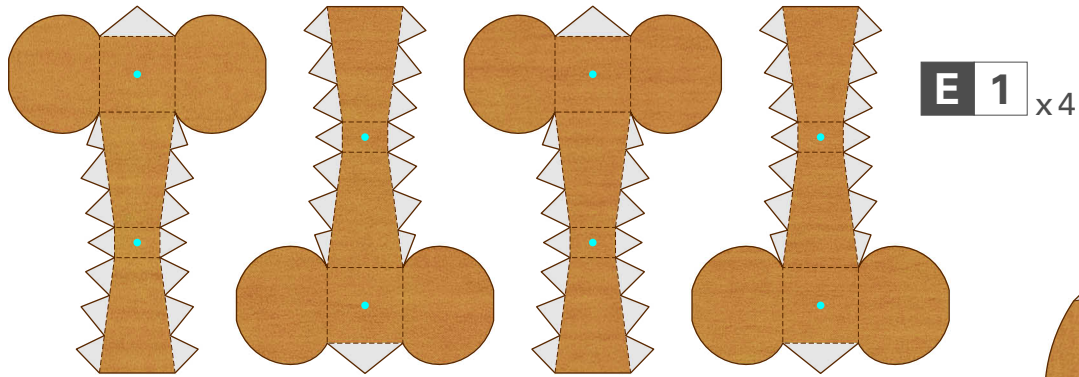
Caution: Glue, scissors and other tools may be dangerous to young children so be sure to keep them out of the reach of young children.



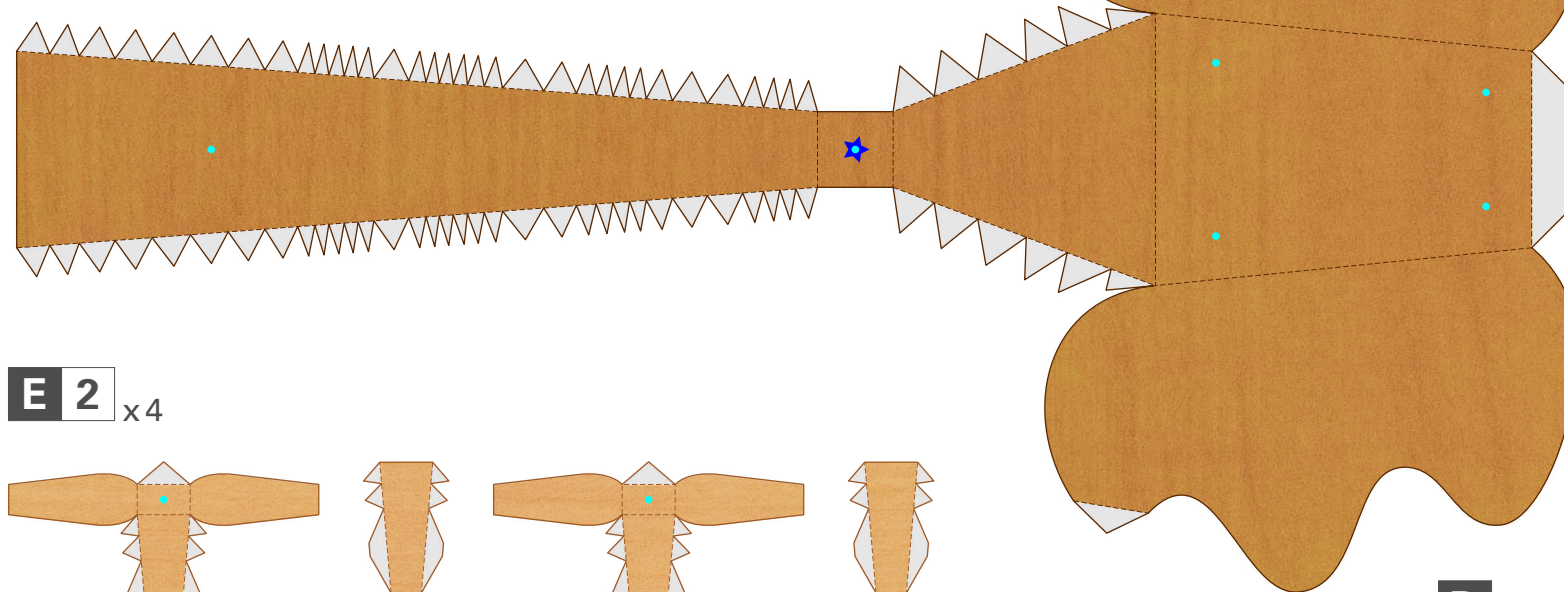
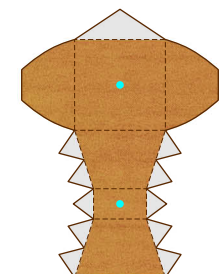
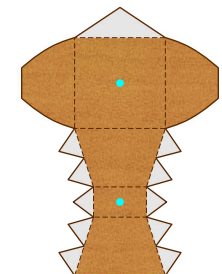
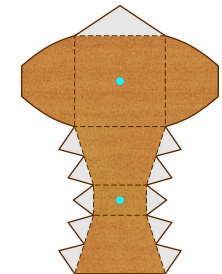
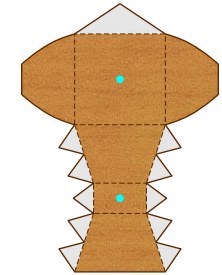
B 1

B 2

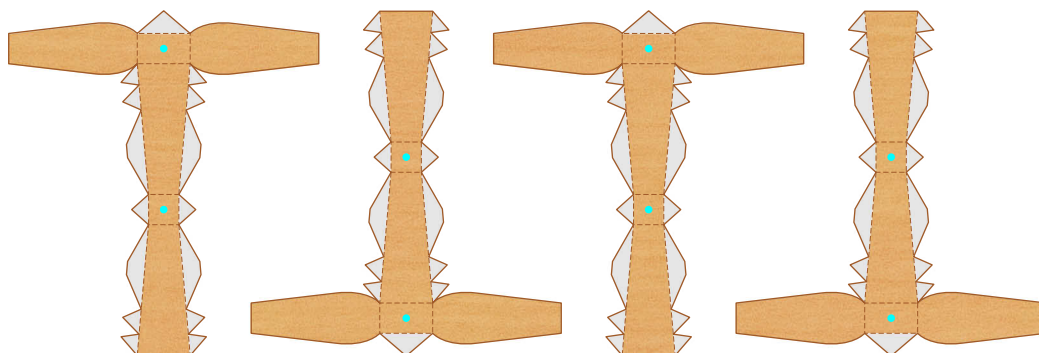




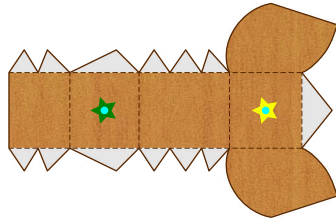
E 3 x4



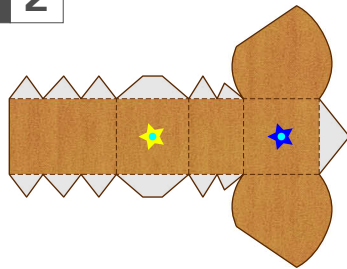
E 2 x4



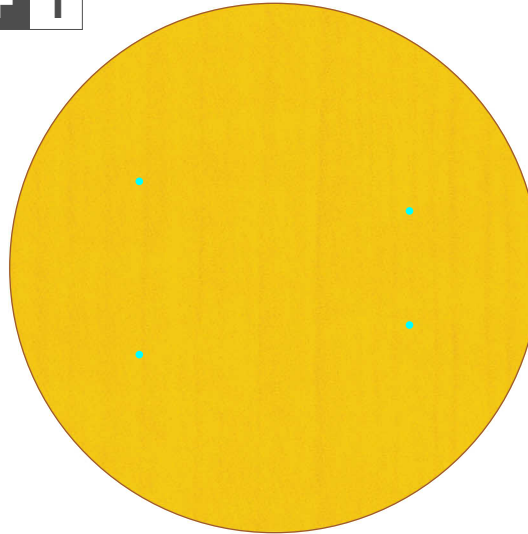
C 1



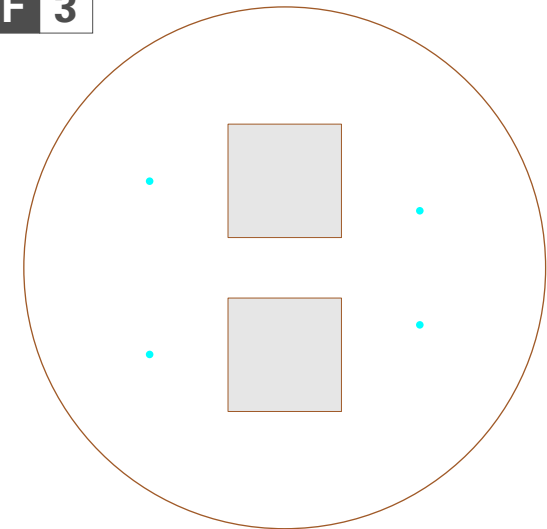
C 2



F 1



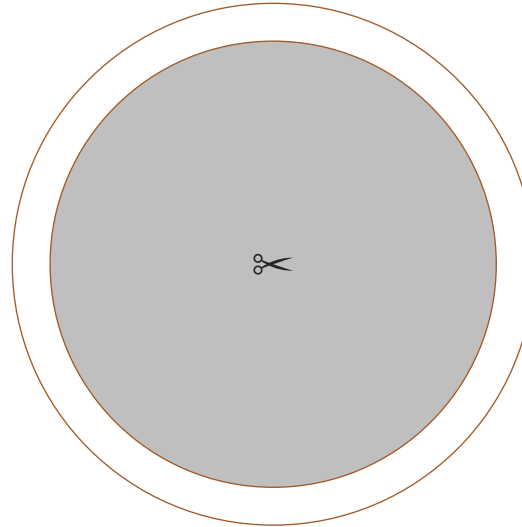
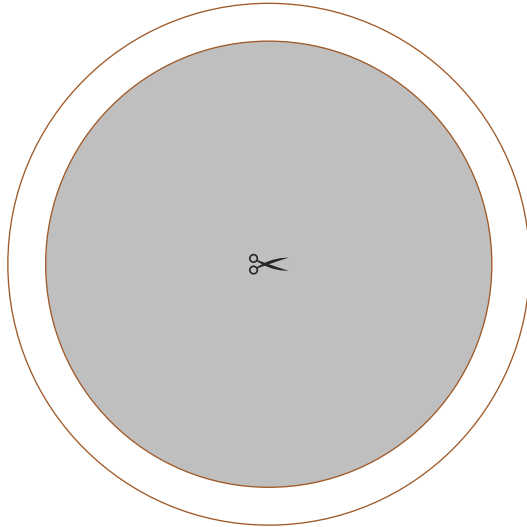
F 3



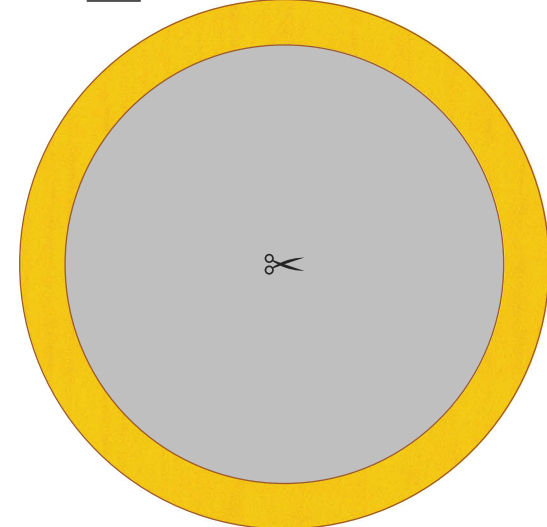
F 2



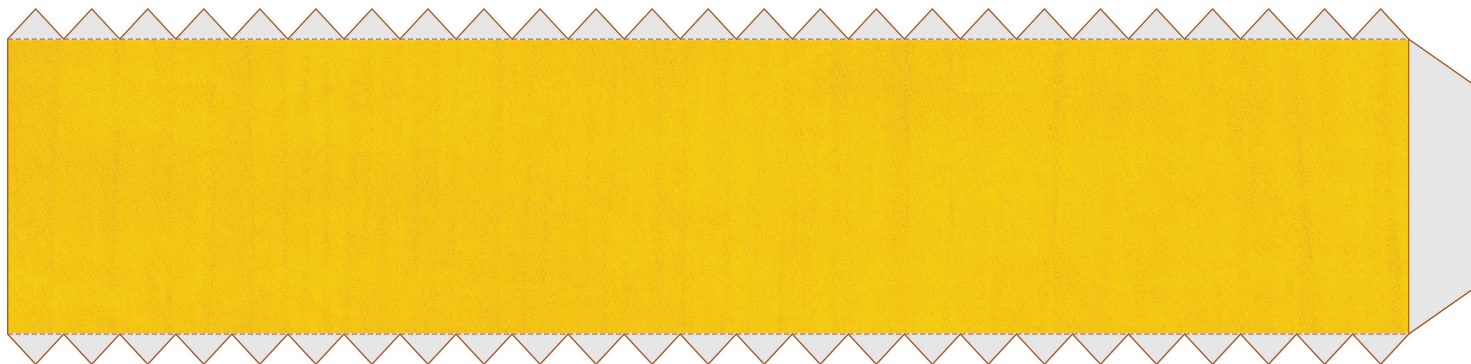
G 2 x2



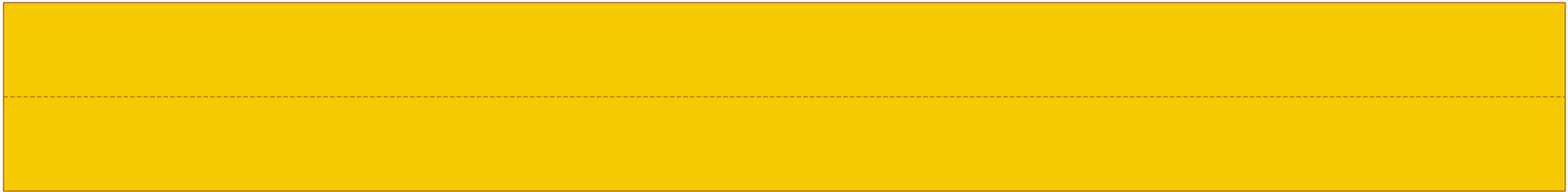
H



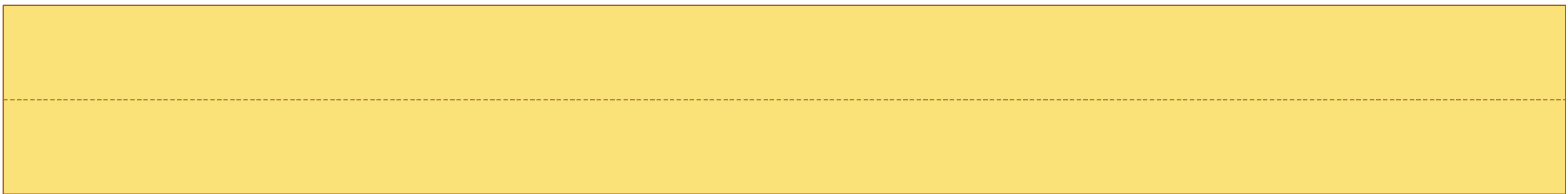
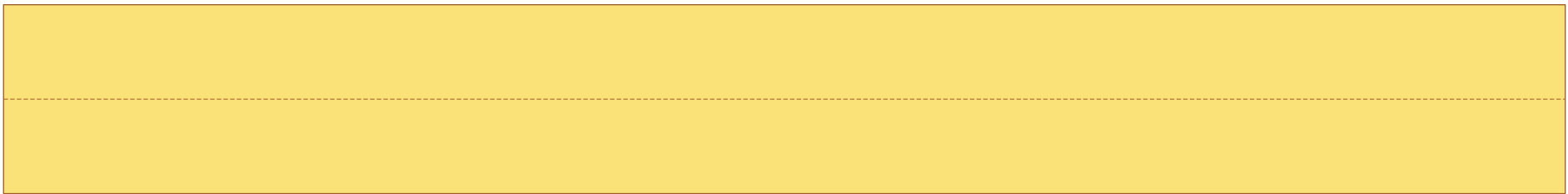
G 1



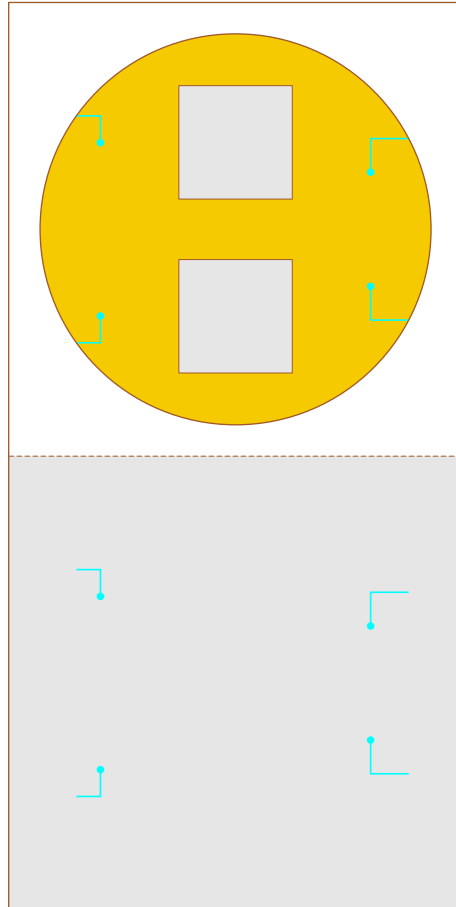
1 2



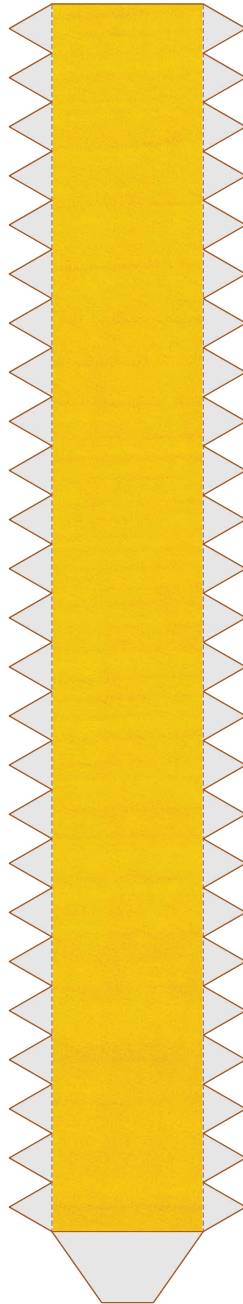
1 3



I 1



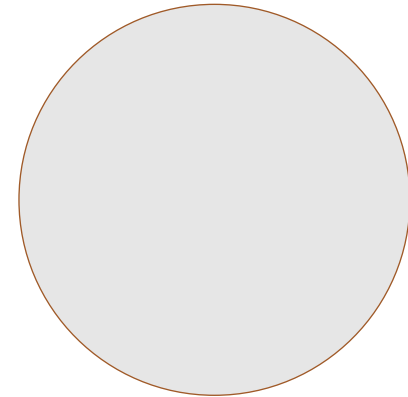
J 1



J 2



J 4



J 3

