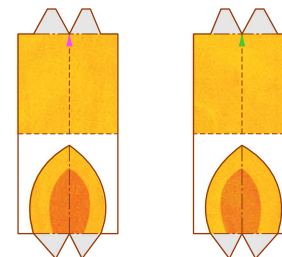


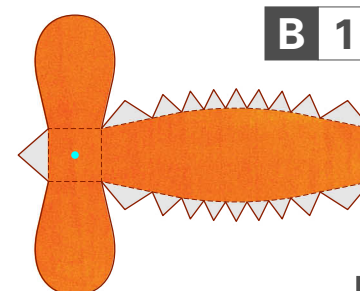
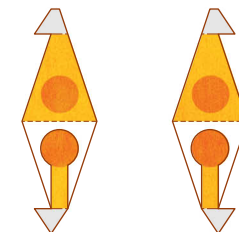
A 2



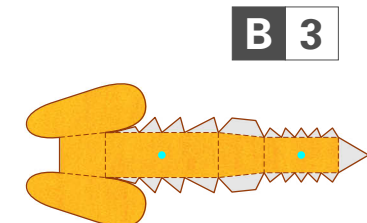
A 3 x2



A 4 x2



B 1



B 3

B 2



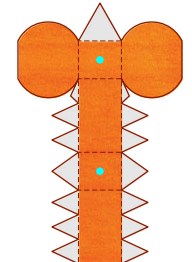
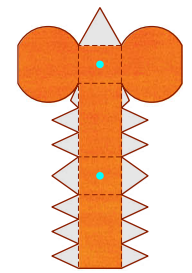
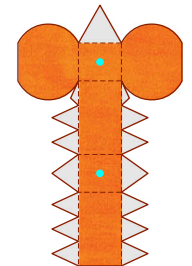
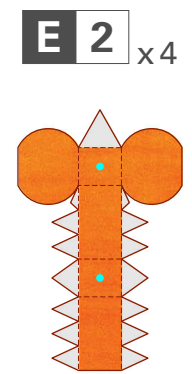
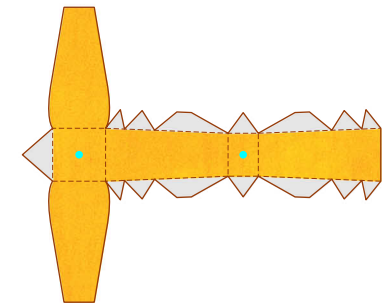
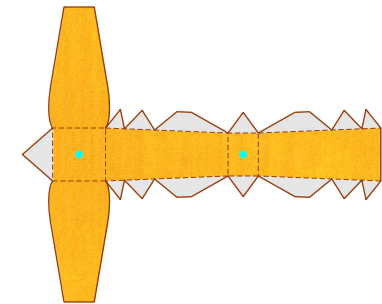
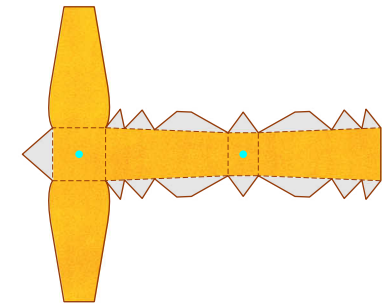
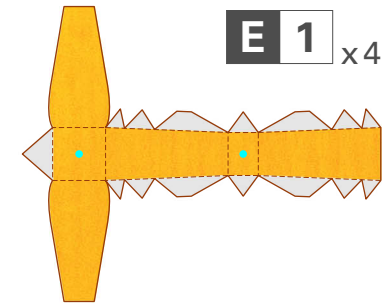
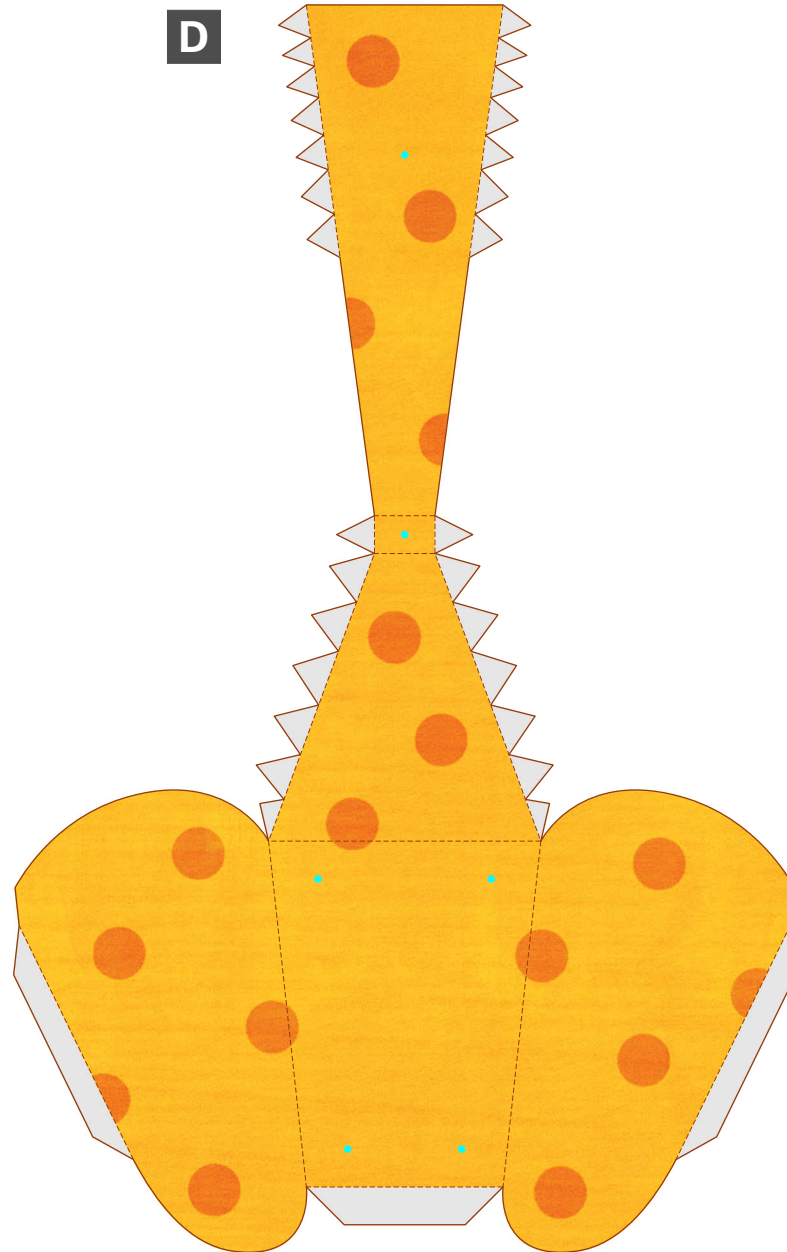
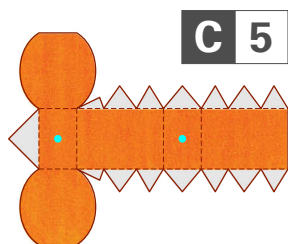
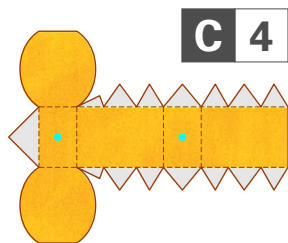
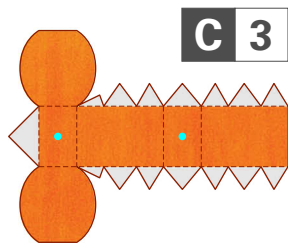
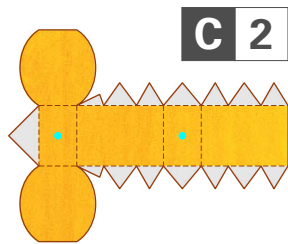
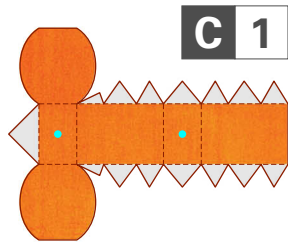
● **Pattern:** 6 sheets ● **Assembly Instructions:** 4 sheets ● **Number of parts:** 51

● **You will need:** Scissors, glue, strong adhesive, a ruler, a used ball-point pen
String (a fairly strong type of thread. The color is up to you, but we recommend gray, yellow, or orange.)

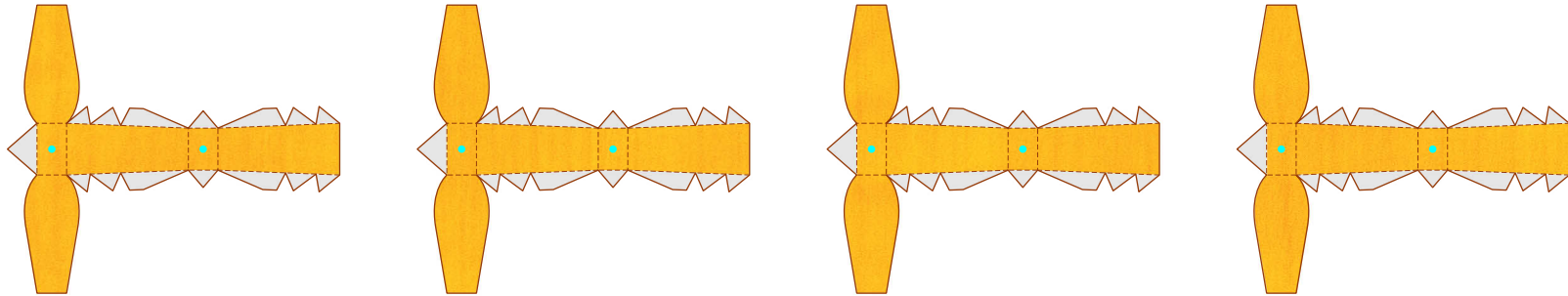
● **Assembly tip:** Trace along the folds with a ruler and a used pen (no ink) to get a sharper, easier fold.

----- Mountain fold - - - - - Valley fold ——— Scissors line
 [Gray Box] Glue spot [Scissors Icon] Cut out [Blue Line] Cut in line
 ● Hole for threading string through (use an old pen or other object to make the hole.)

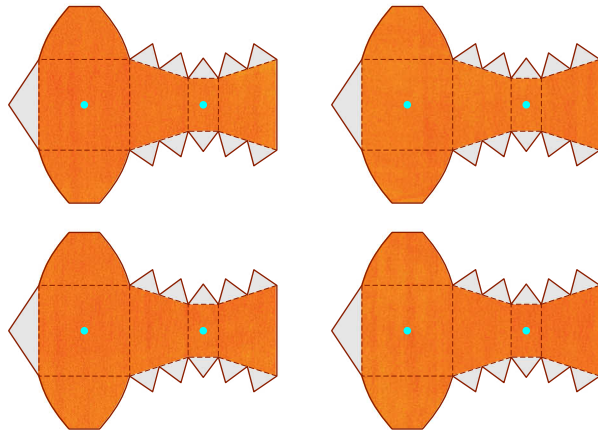
Caution: Glue, scissors and other tools may be dangerous to young children so be sure to keep them out of the reach of young children.



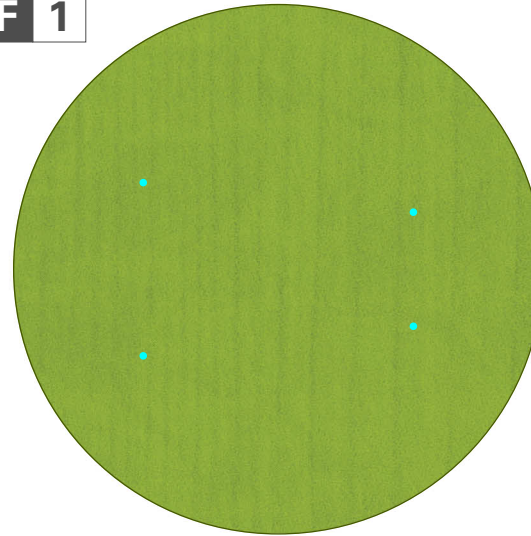
E 3 x4



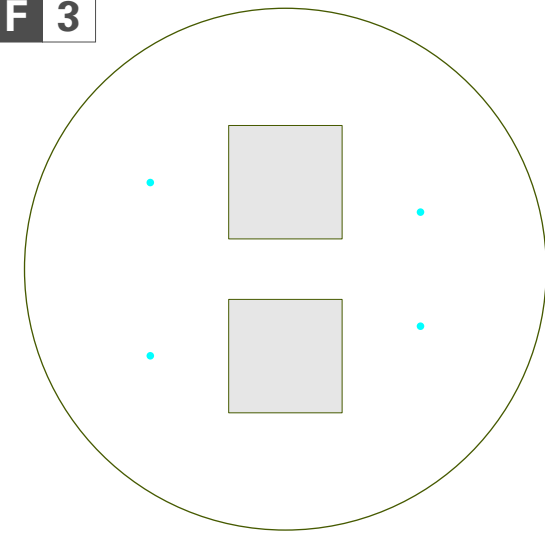
E 4 x4



F 1



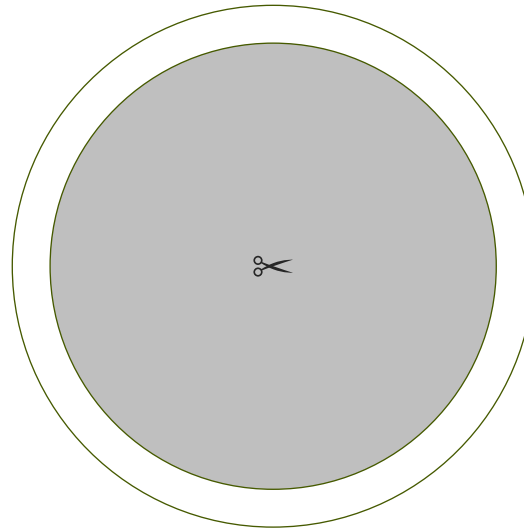
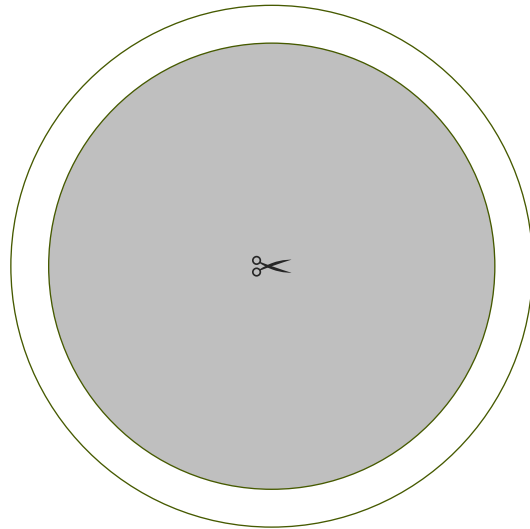
F 3



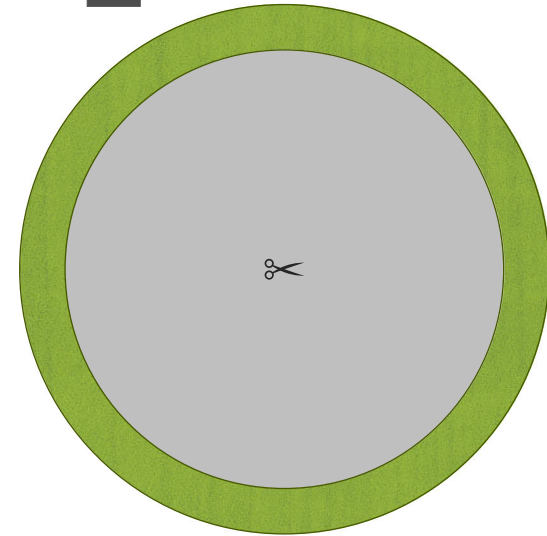
F 2



G 2 x2



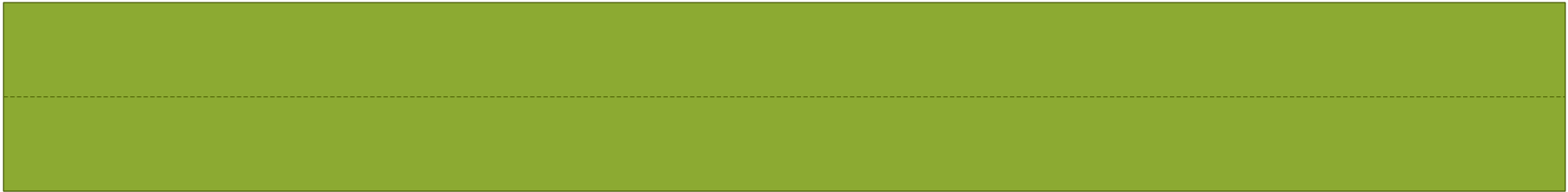
H



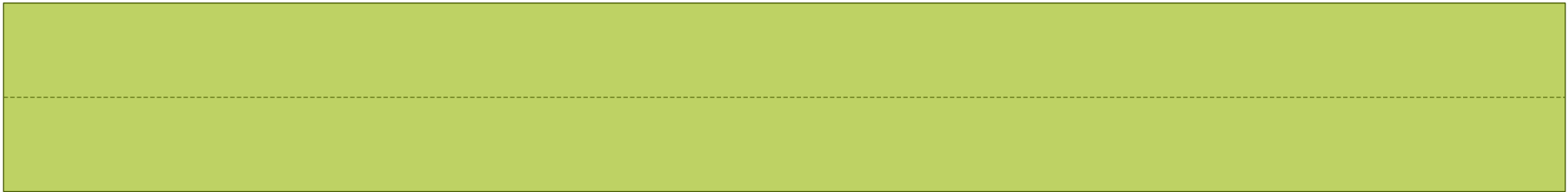
G 1



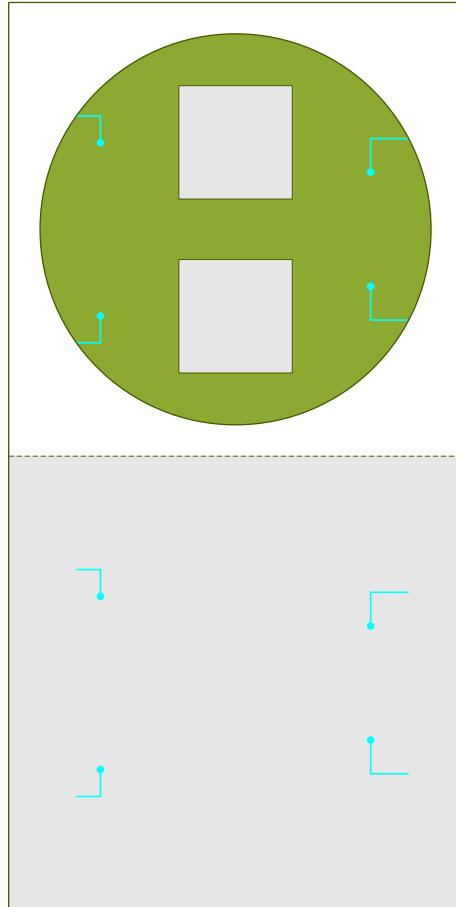
1 2



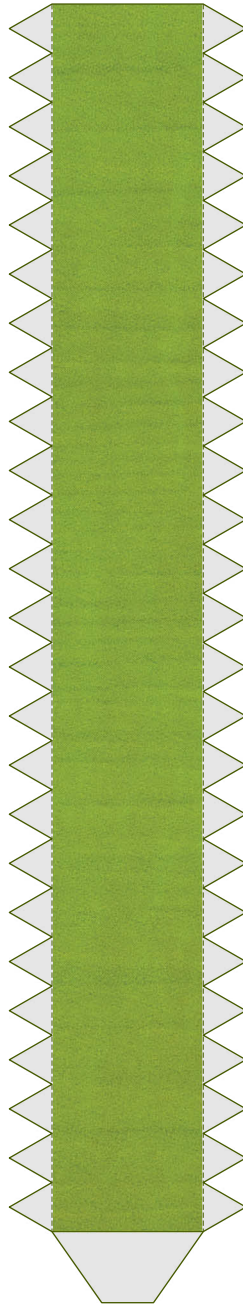
1 3



I 1



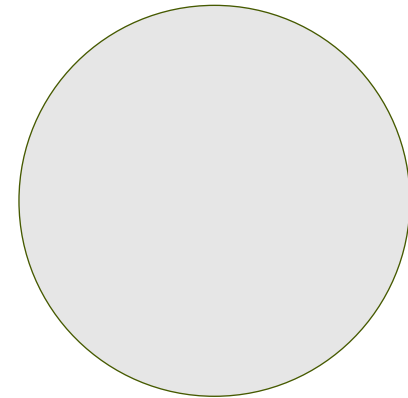
J 1



J 2



J 4



J 3

