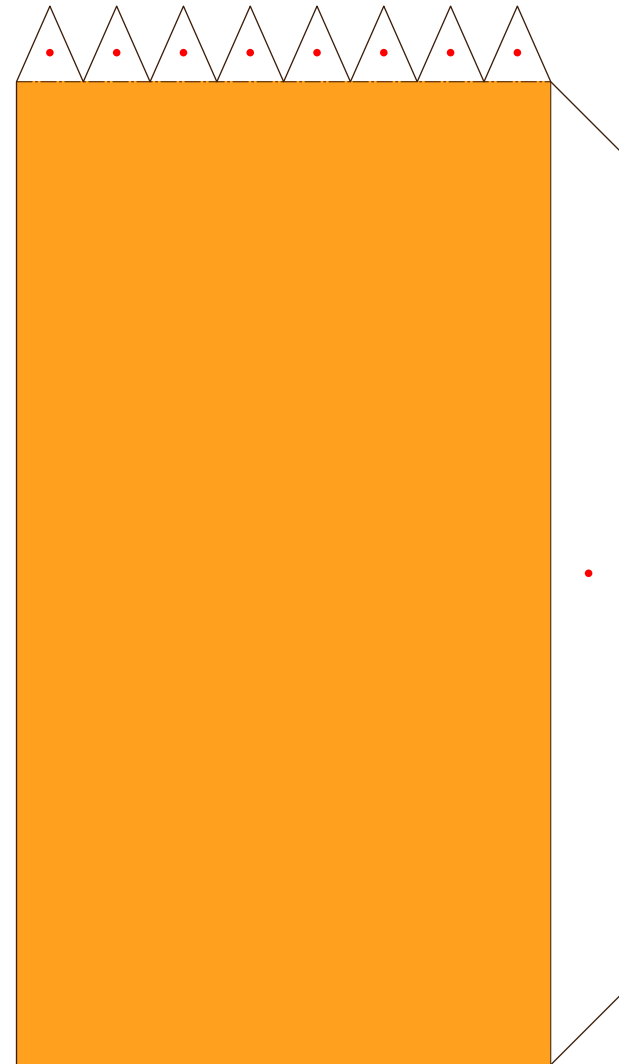




**A 1**



**Assembly Instructions**

● **Pattern:** 10 sheets    ● **Assembly Instructions:** 2 sheets    ● **No.of parts:** 37

● **Tools and materials:**

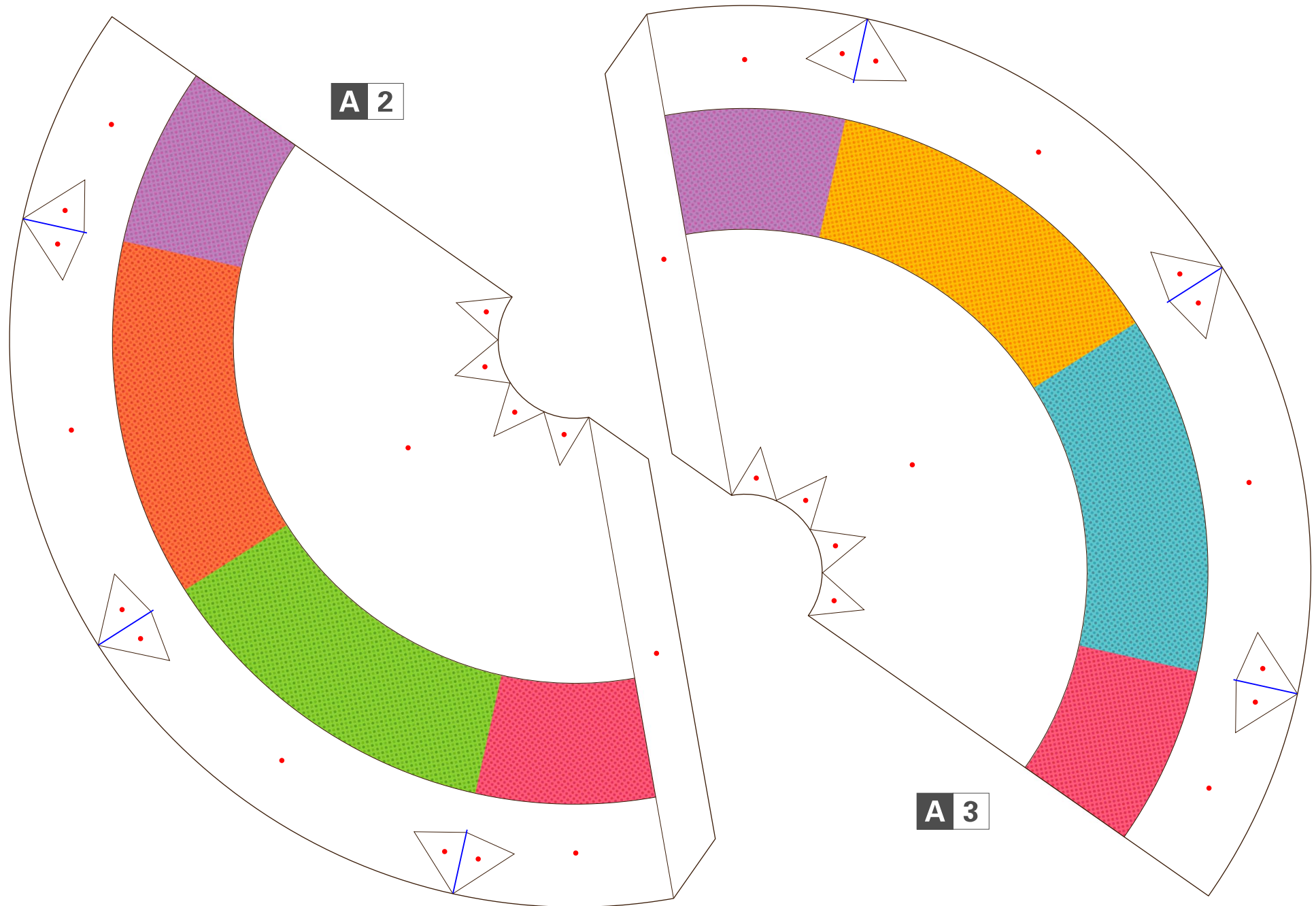
Scissors, glue, ruler, a used ball-point pen

● **Assembly tip:**

Trace along the folds with a ruler and a used pen (no ink) to get a sharpe, easier fold.

-----	Mountain fold	- - - - -	Valley fold	●	Glue spot
—	Scissors line	—	Cut in line		

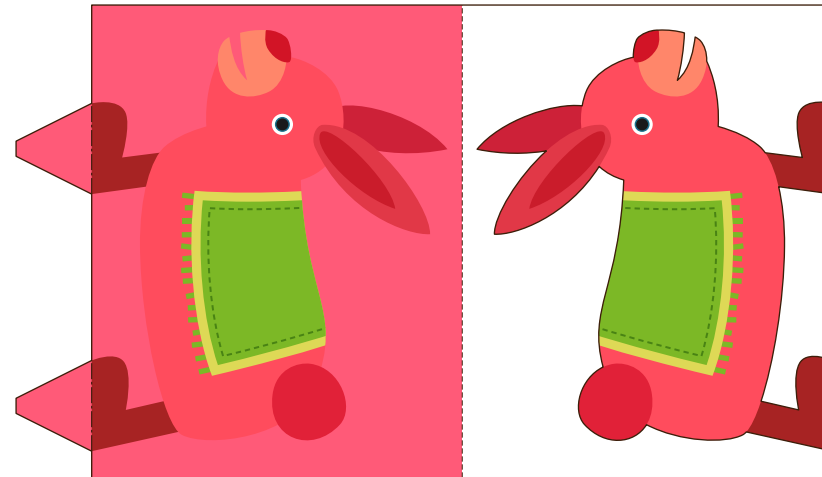
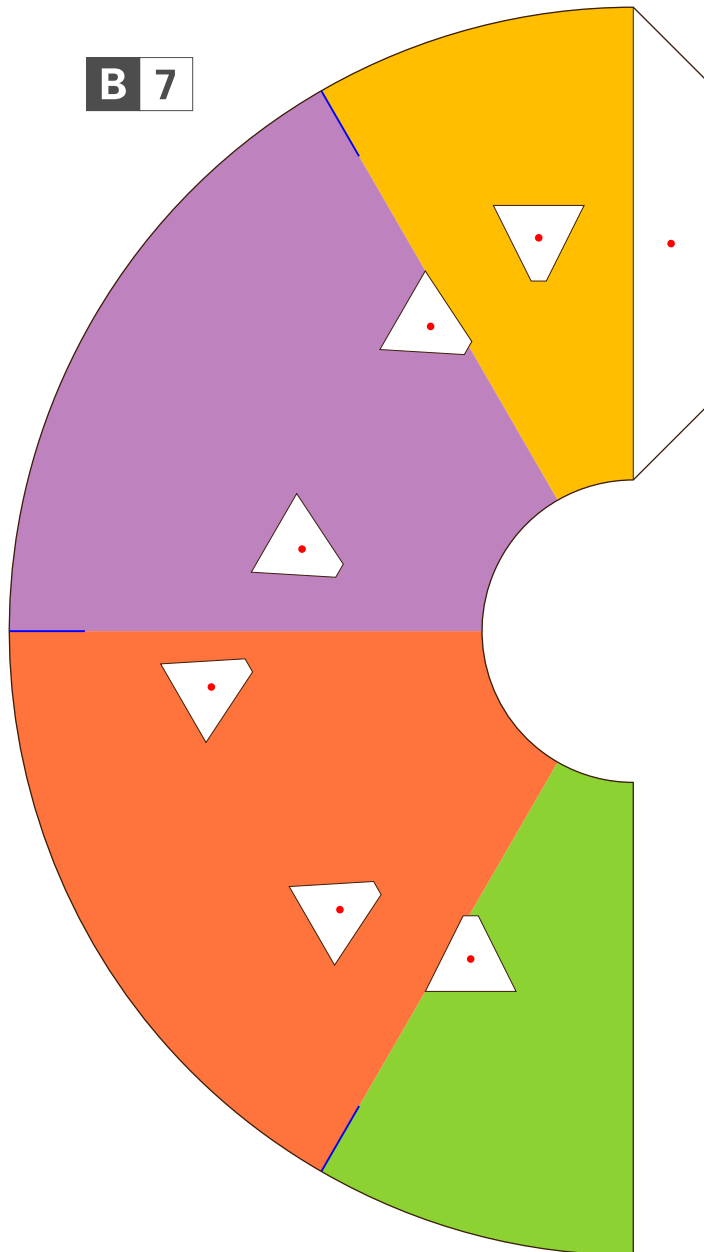
**!** Caution: Glue, scissors and other tools may be dangerous to young children so be sure to keep them out of the reach of young children.



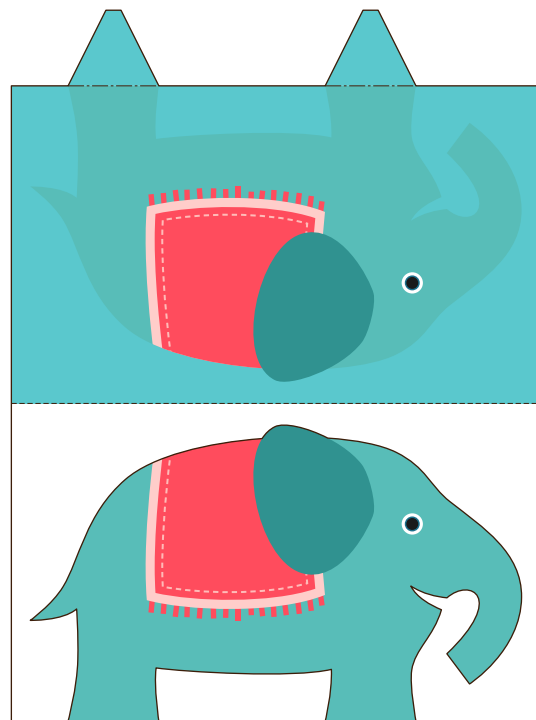
**A 2**

**A 3**

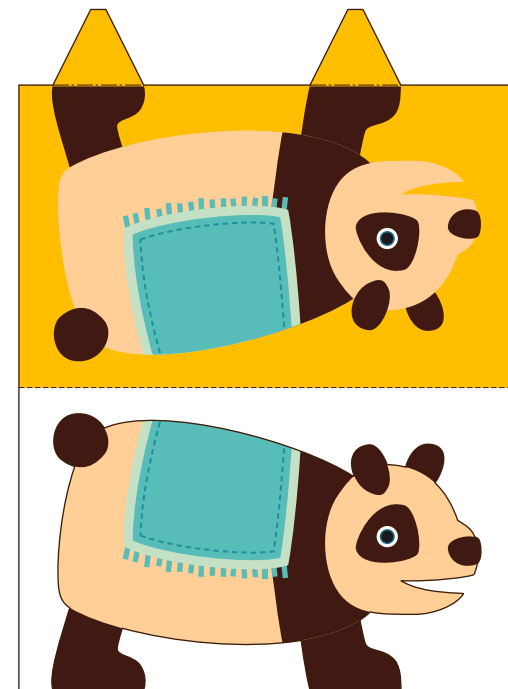
B 7



B 1

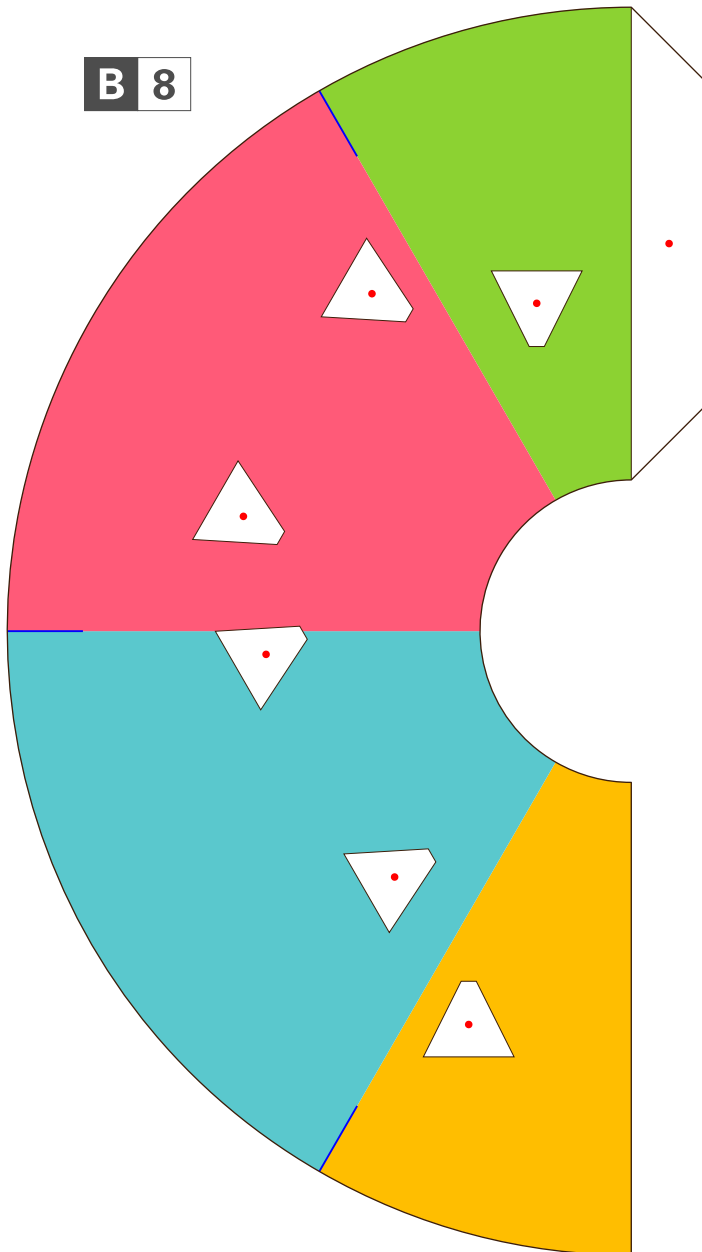


B 2

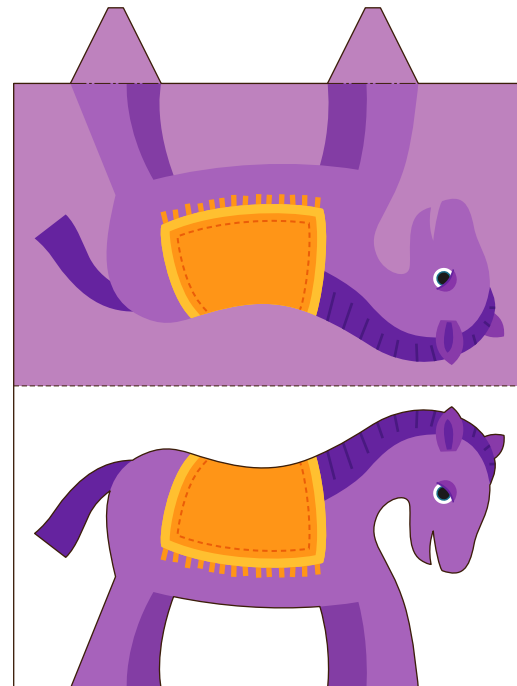


B 3

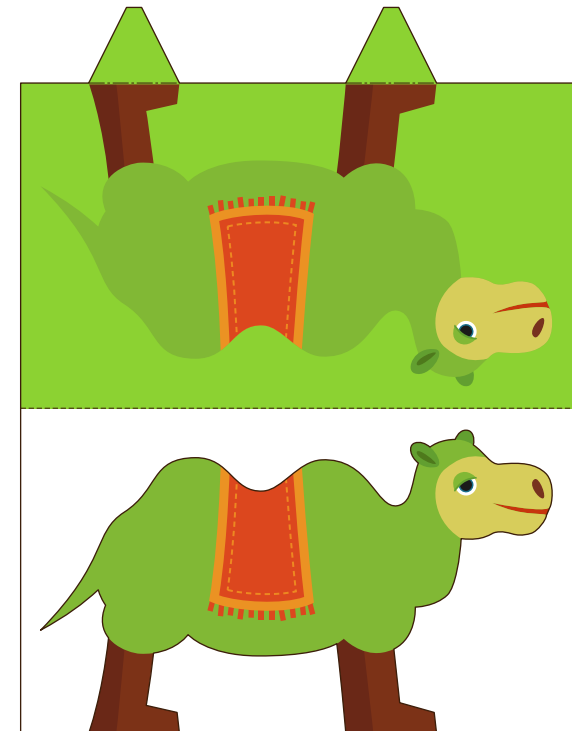
B 8



B 5

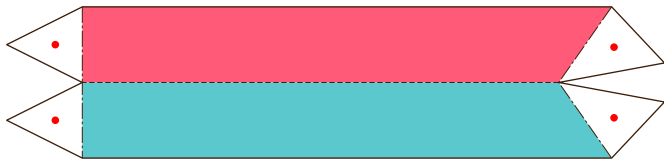


B 4

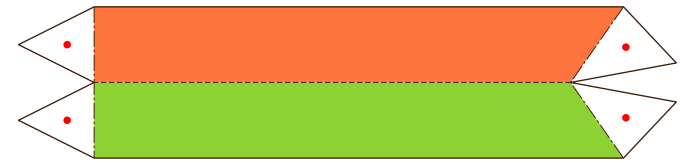


B 6

C 1



C 5



C 3



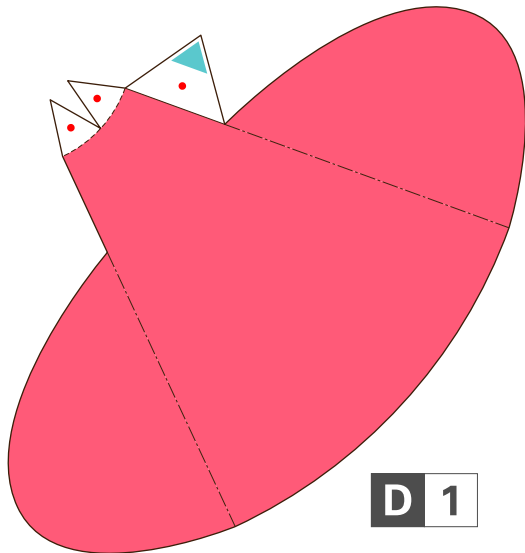
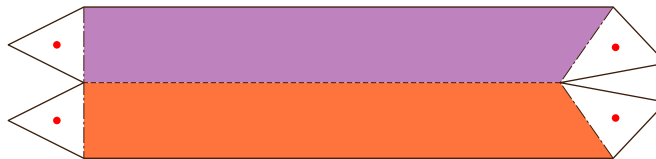
C 2



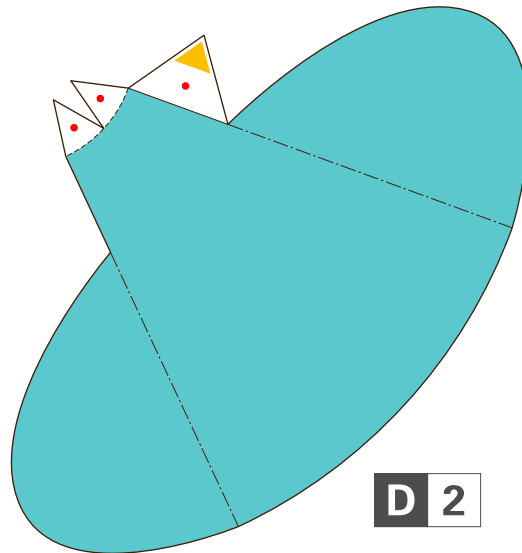
C 6



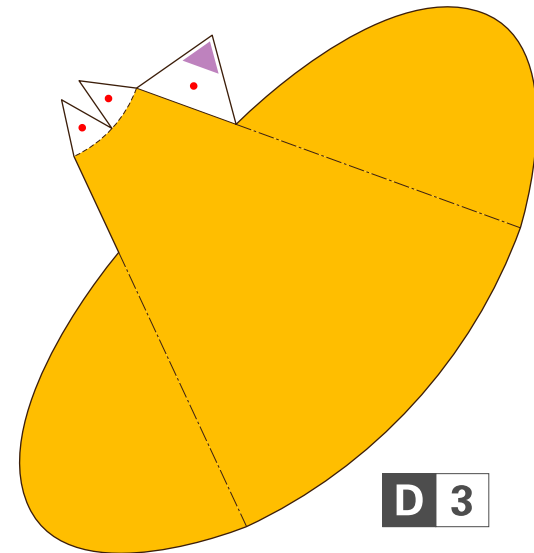
C 4



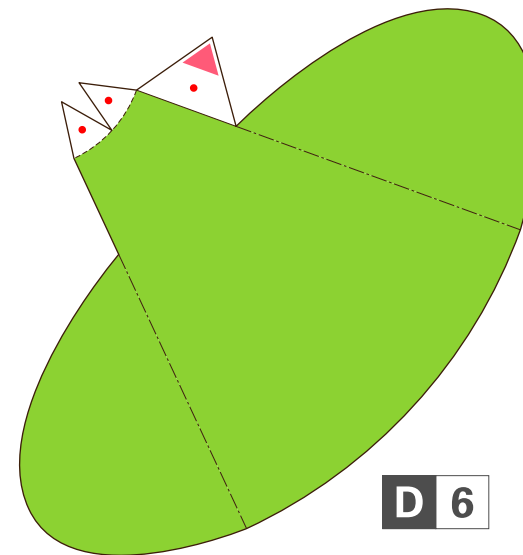
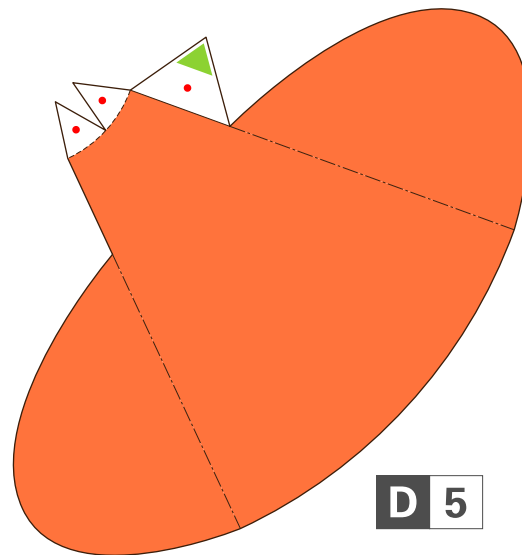
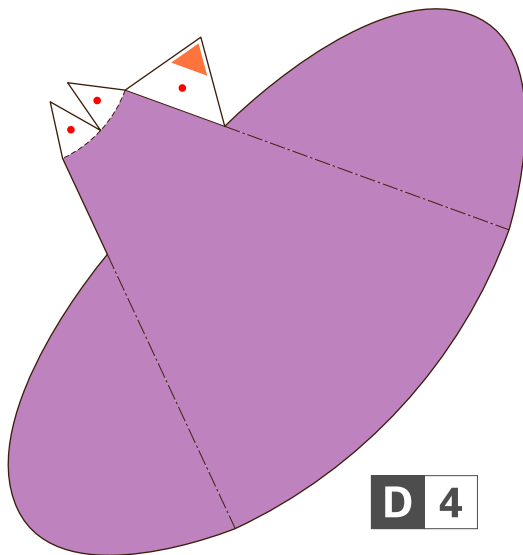
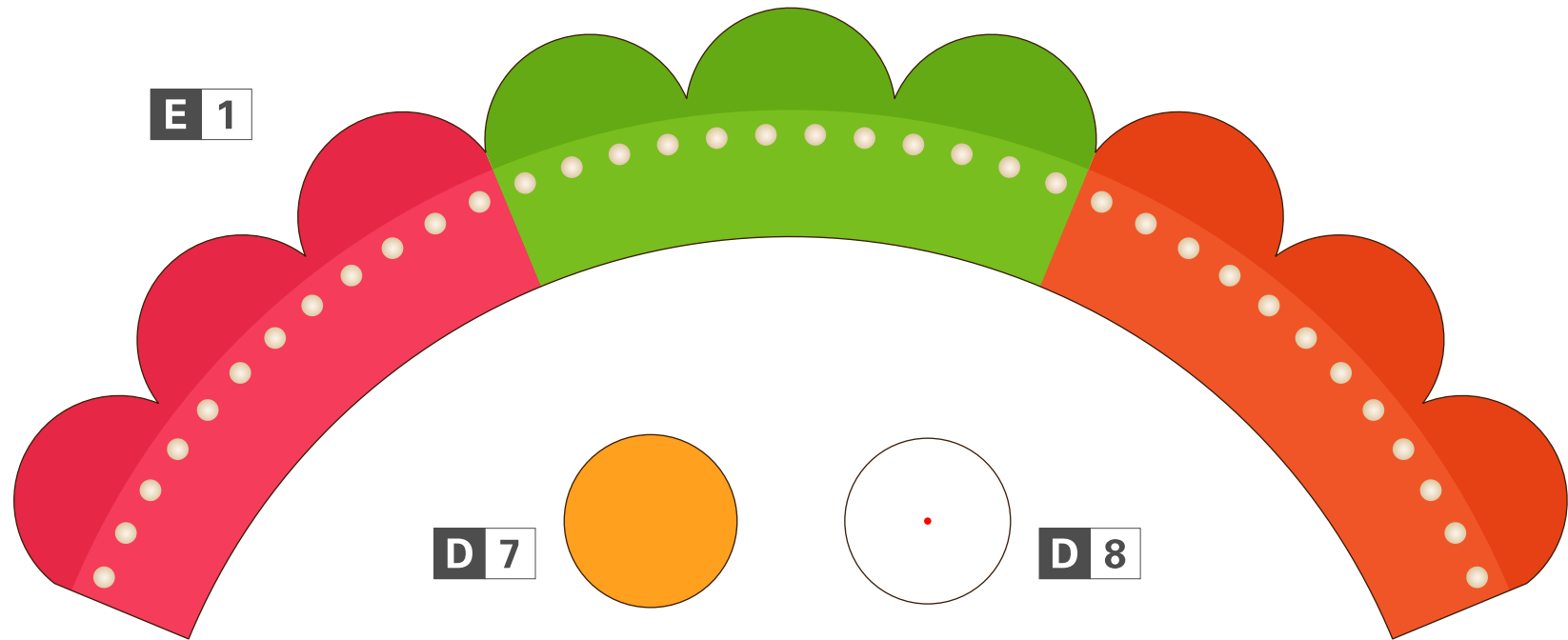
D 1

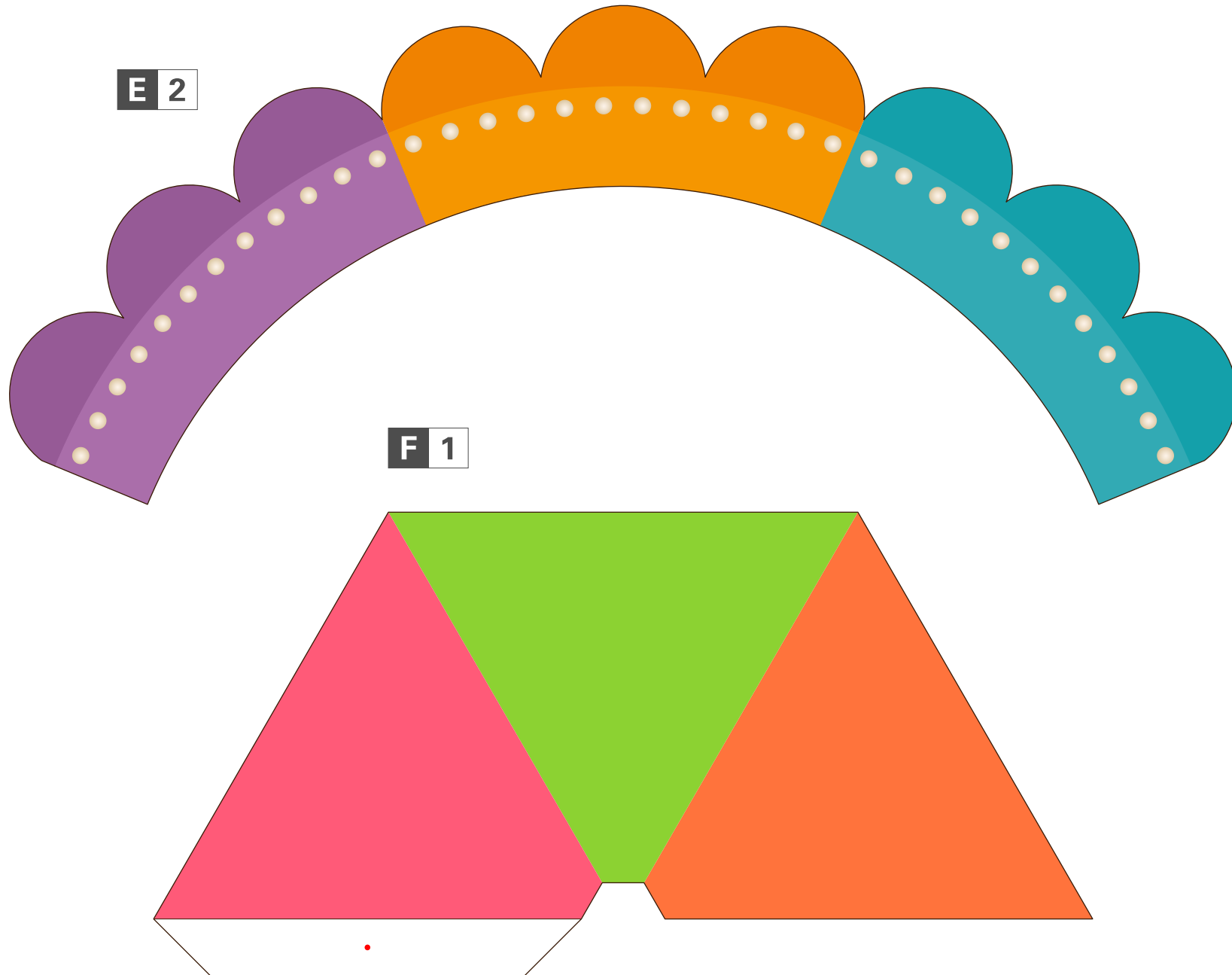


D 2



D 3

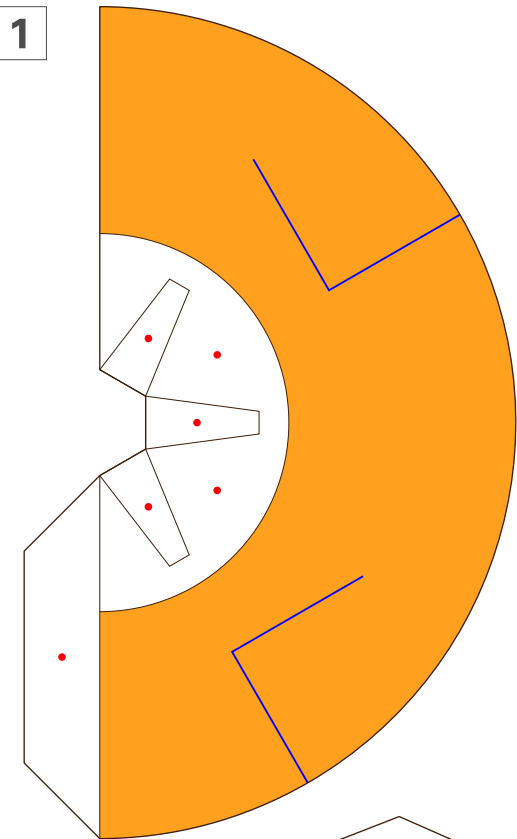




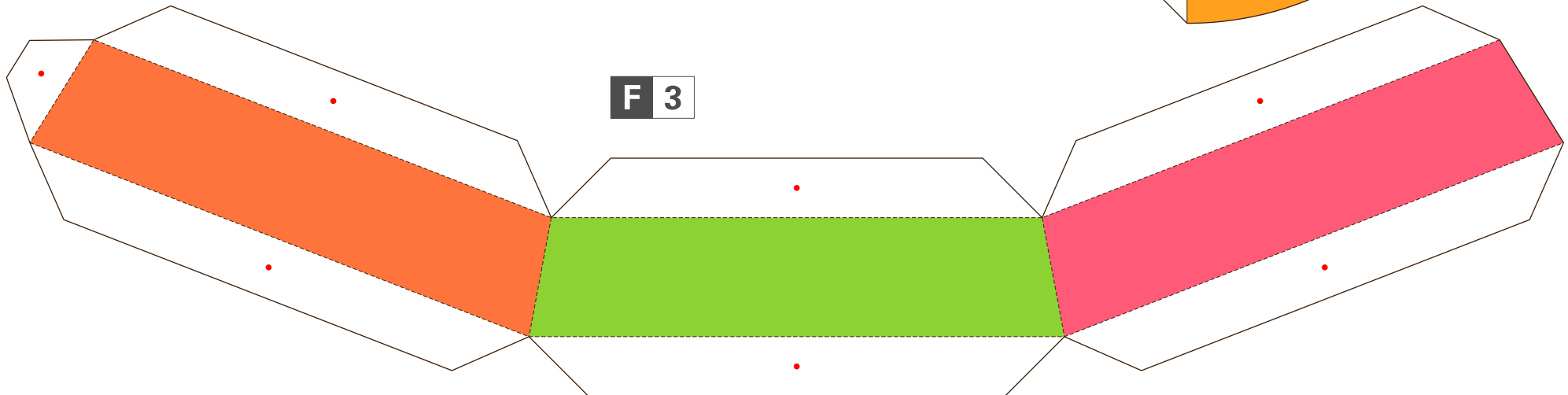
F 2



G 1

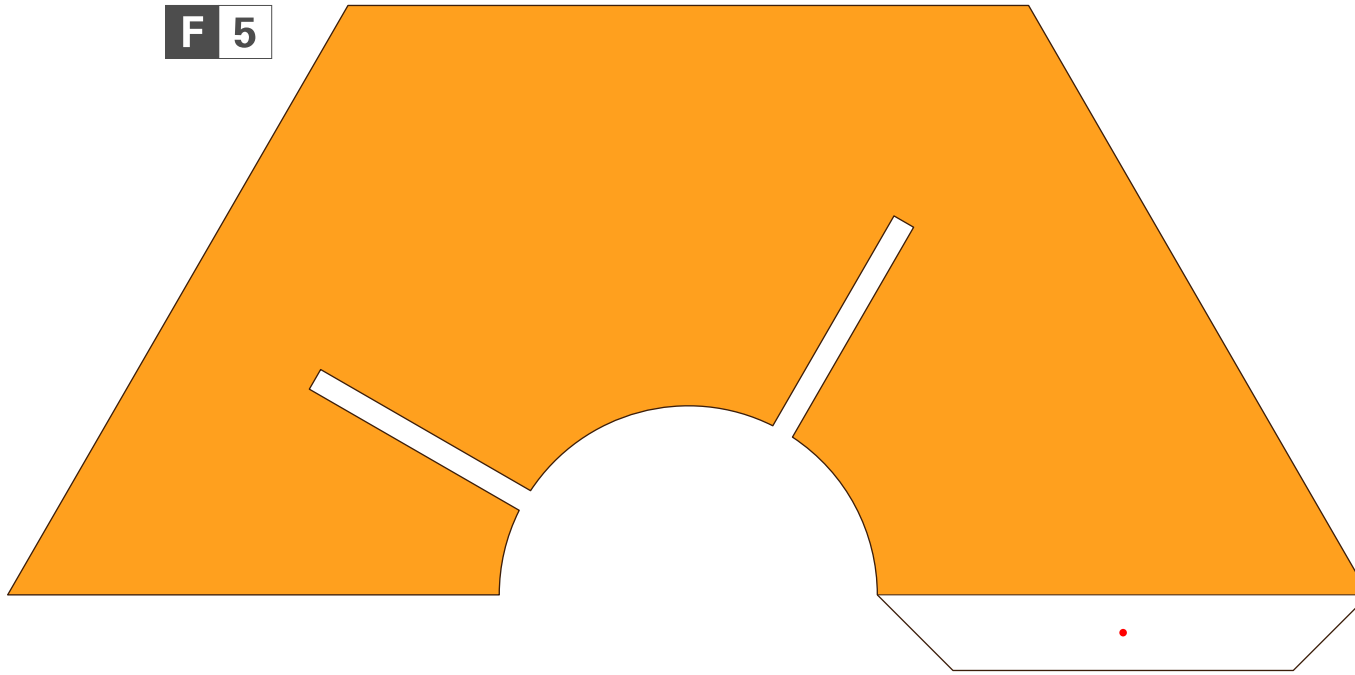


F 3

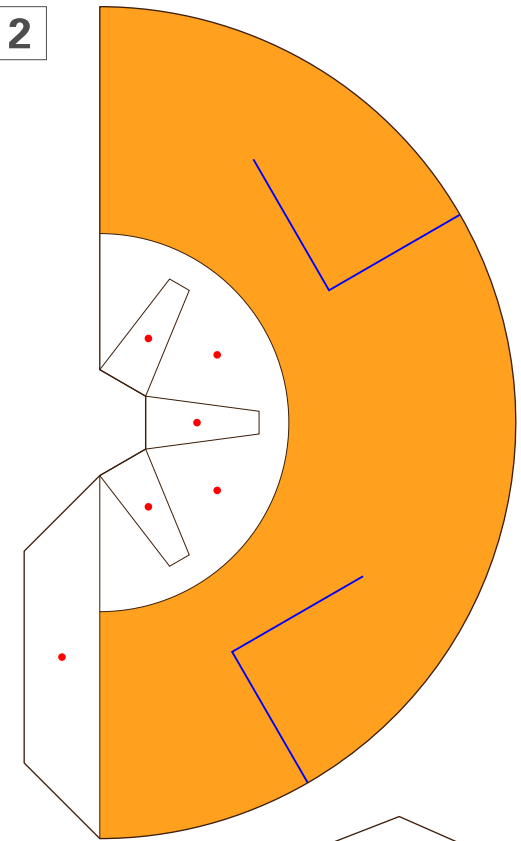




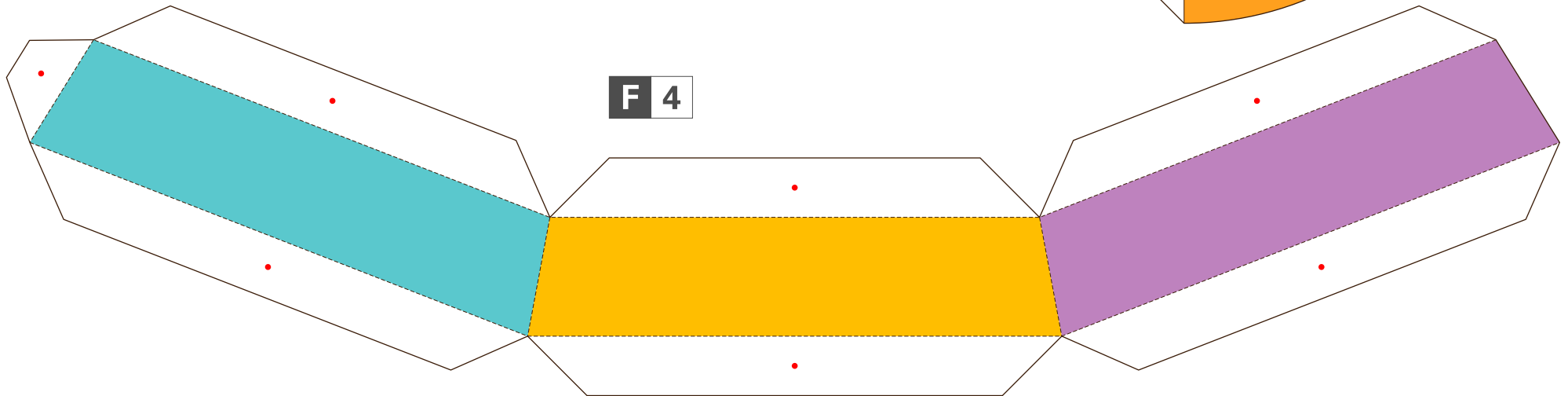
F 5



G 2



F 4



**F 6**



**G 4**



**G 3**

