

TOMB RAIDER

Tomb Raider II red snowmobile

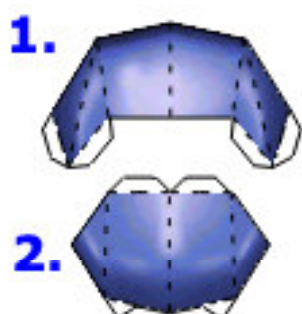


One of **Lara Croft's** new features in the 3D action/adventure game **Tomb Raider II: The Dagger of Xian** is the ability to use vehicles.

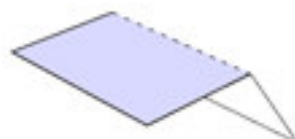
In the snowy **Tibetan Foothills** level for instance, you get to drive a snowmobile (yay! ;o). Now, you need to know that there are two kinds of snowmobiles: the fast **red ones**, and the heavy, armed **black ones**.

On those occasions that you need to cross a large gap, you'll want to be on a fast **red snowmobile**: holding down the **Action** key on one of these will give you a turbo boost that will enable you to cross even the largest chasms!

And hey, even if the **red snowmobile** isn't armed, you can still use it to just run your enemies over... ;o)



OPTIONAL: only print pages 1-2 if you can't be bothered to print these parts on a transparent sheet

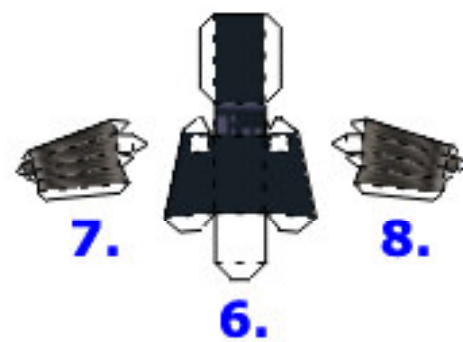
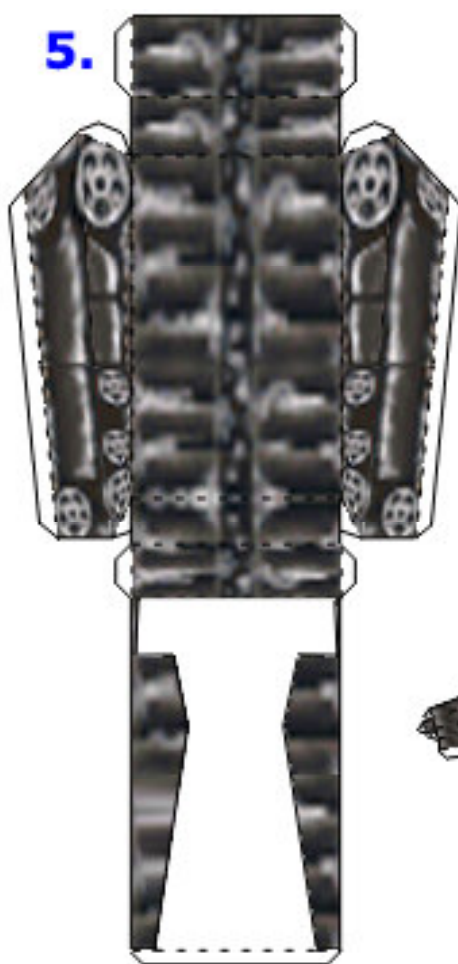
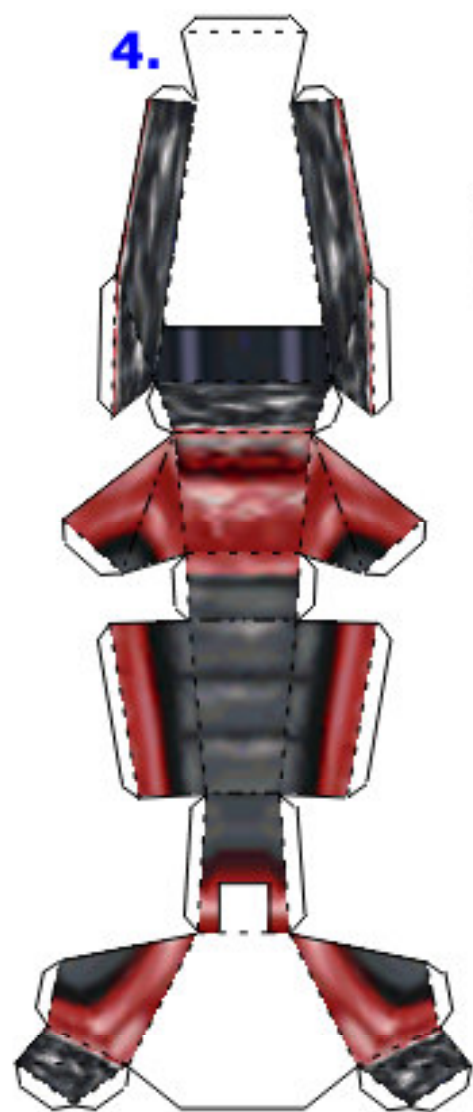


dashed lines: score and fold down
(mountain fold)

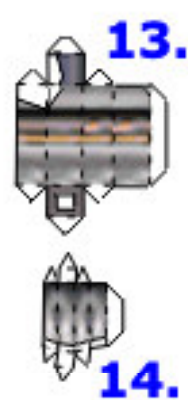


dot-dash lines: score and fold up
(valley fold)



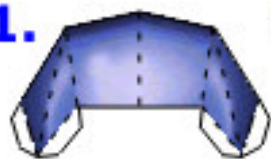


right ski



left ski

1.



2.



OPTIONAL: print these parts on a transparent sheet for best results