

Assembly Instructions

● **Pattern:** 7 sheets ● **Assembly Instructions:** 2 sheets ● **No. of parts:** 26

● Tools and materials:

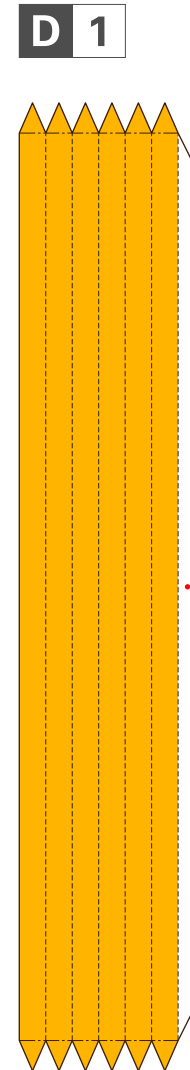
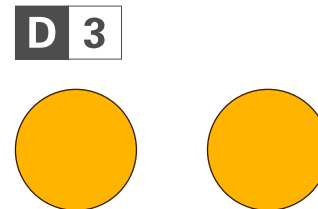
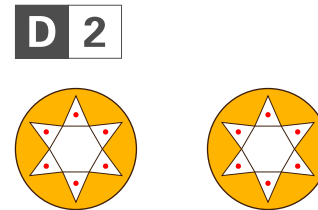
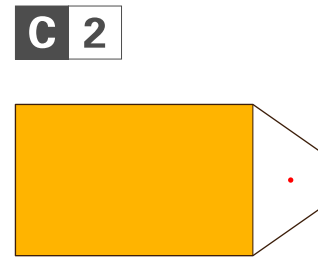
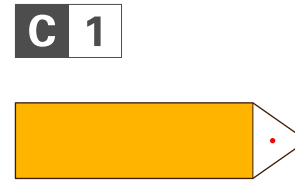
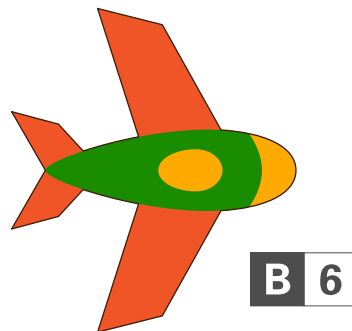
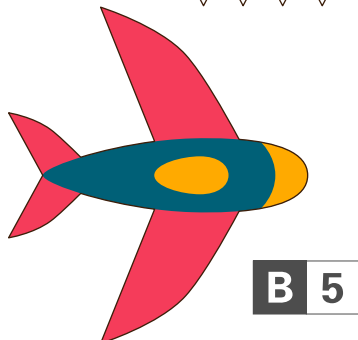
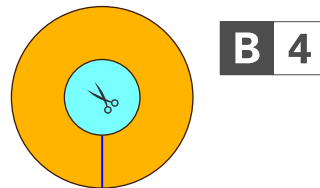
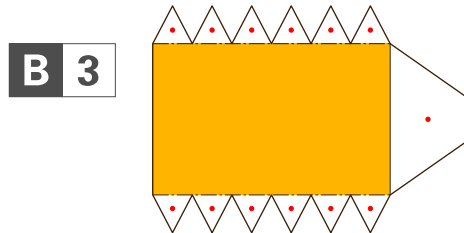
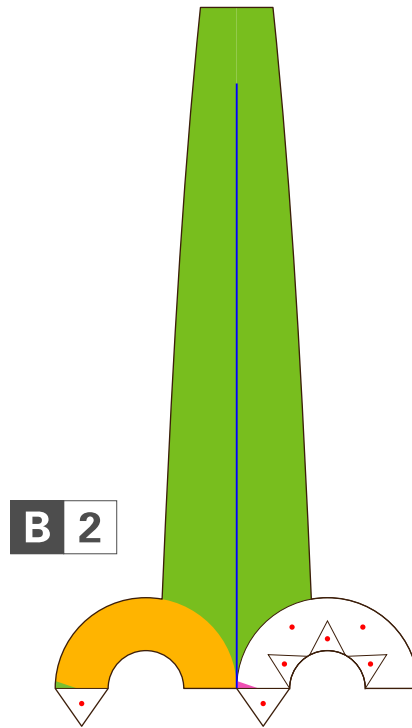
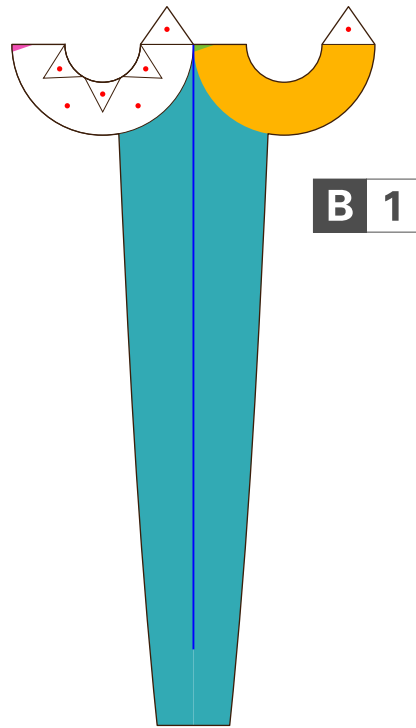
Scissors, glue, ruler, a used ball-point pen

● Assembly tip:

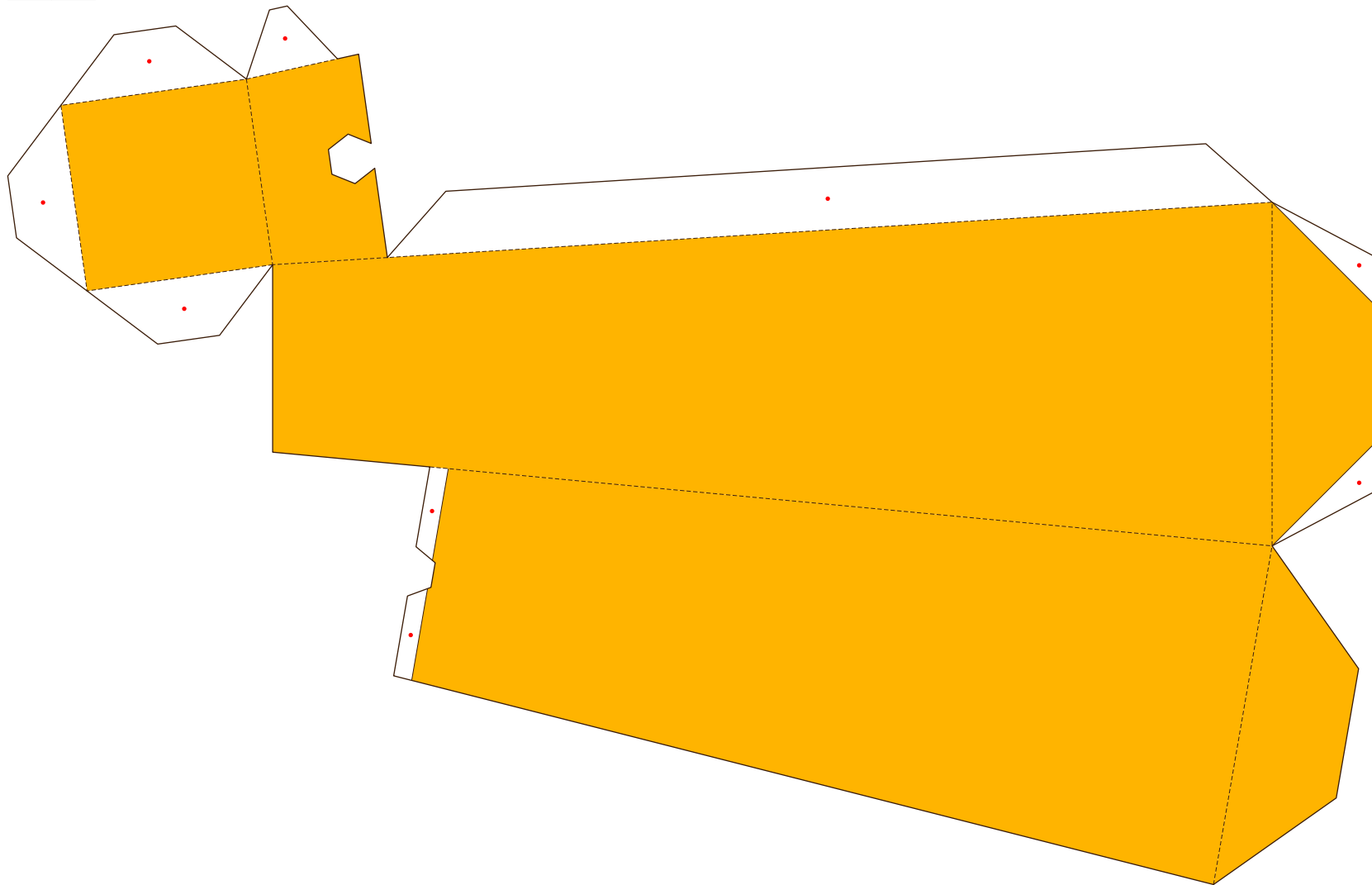
Trace along the folds with a ruler and a used pen (no ink) to get a sharpe, easier fold.

----- Mountain fold	- - - - - Valley fold	Cut out
——— Scissors line	——— Cut in line	Glue spot

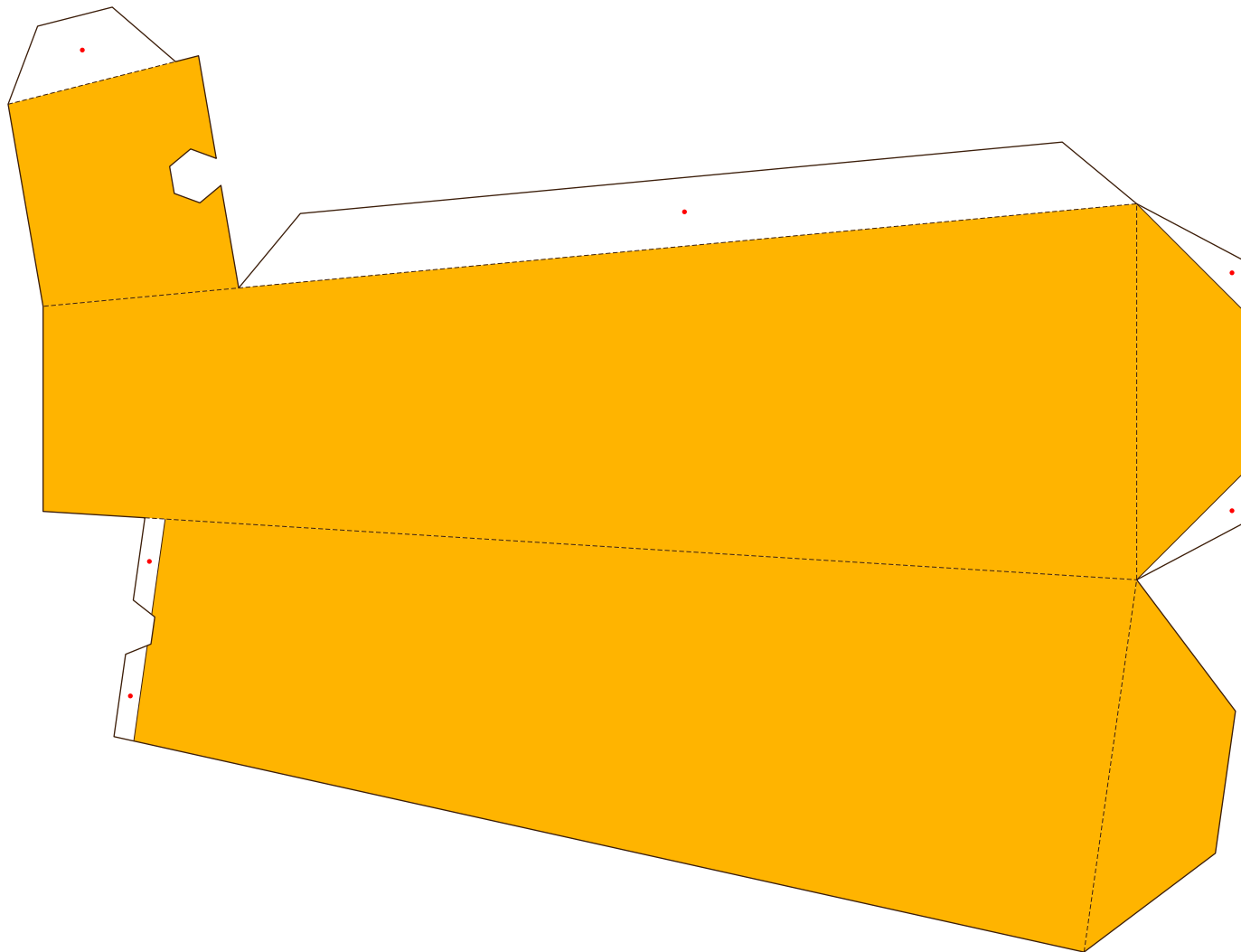
Caution: Glue, scissors and other tools may be dangerous to young children so be sure to keep them out of the reach of young children.



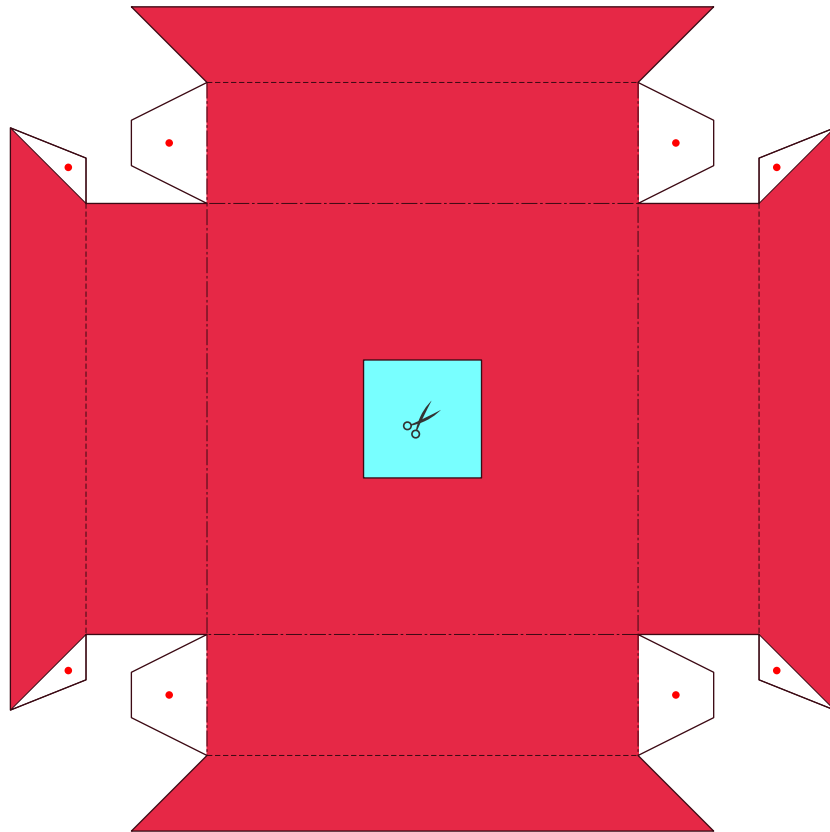
E 1



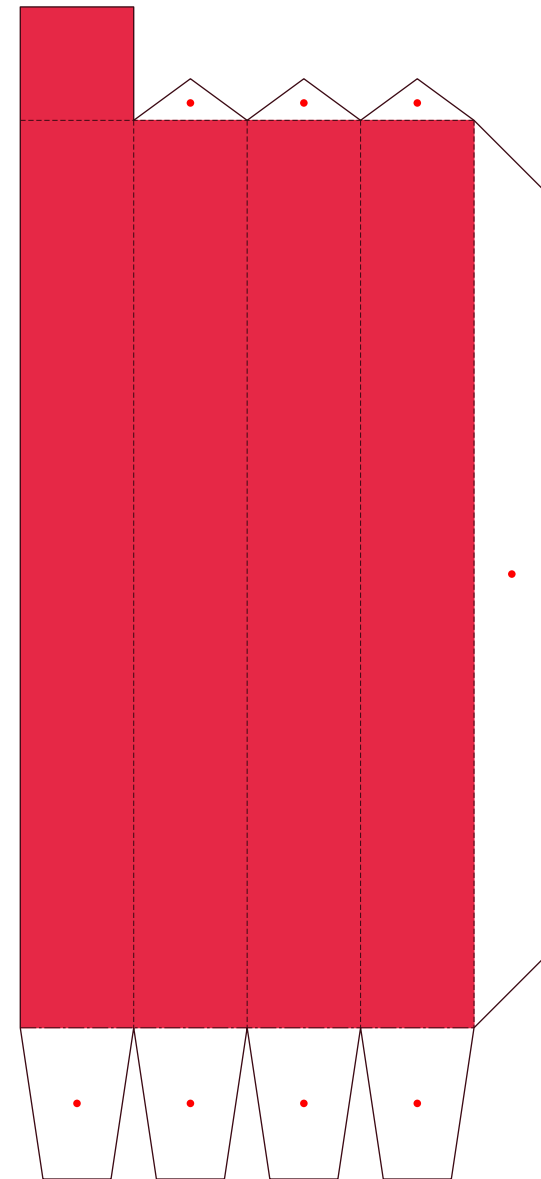
E 2



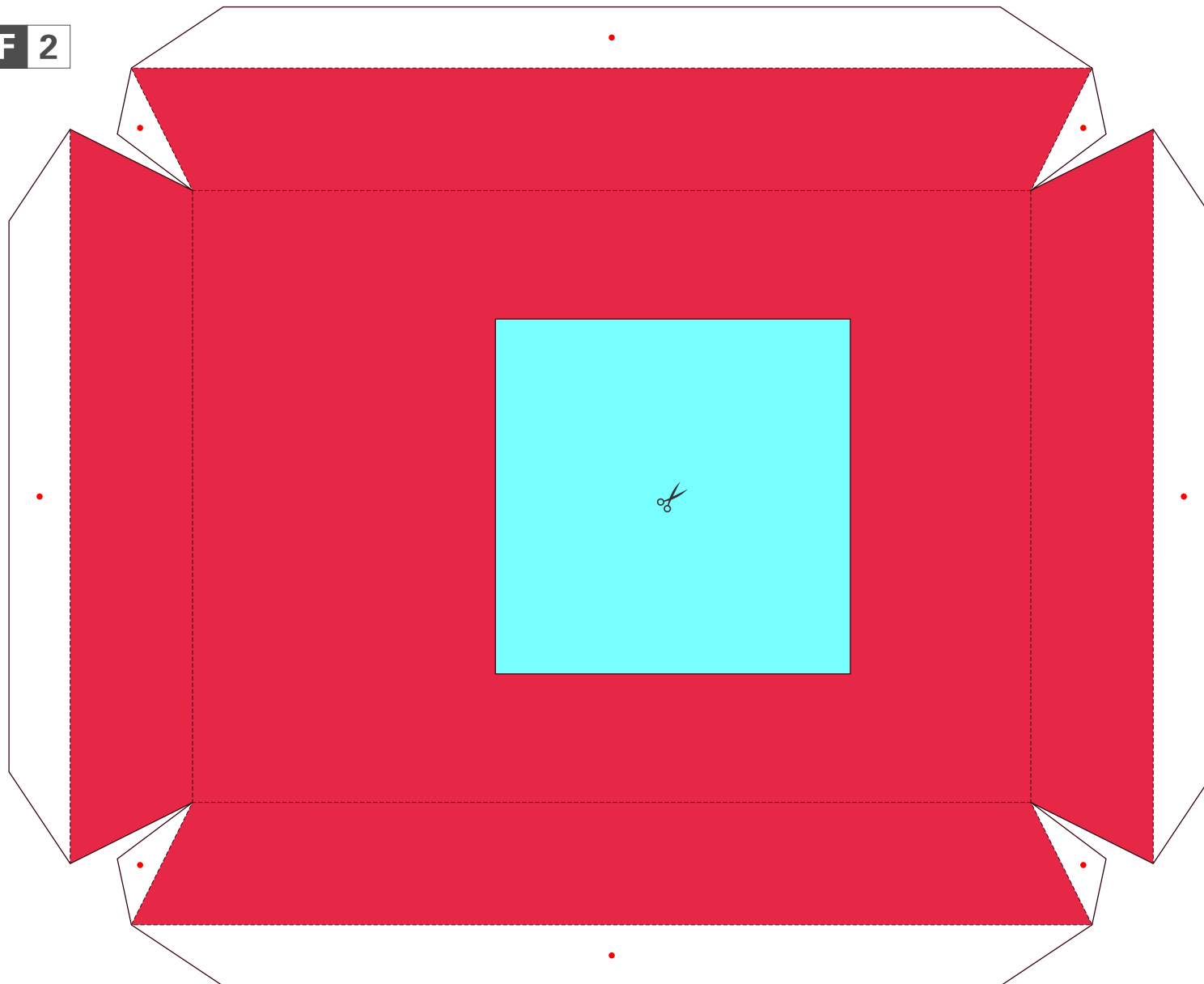
F 1



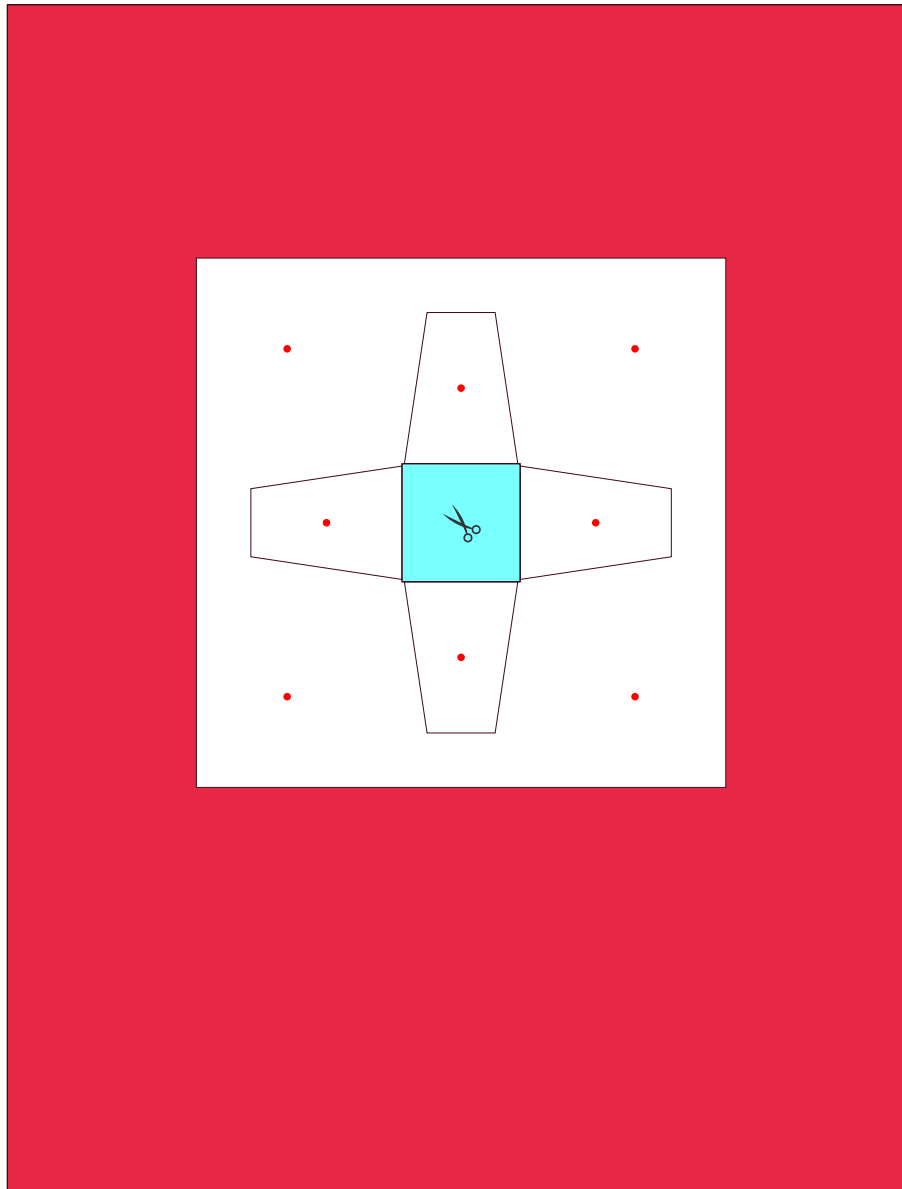
F 4



F 2



F 3



F 5

