

PAPER CRAFT

<http://www.canon.com/c-park/en/>

Polar Bear



- Mammalia Carnivora Ursidae
- Length (incl. tail): approx. 1.5 to 2.4m (approx. 4.92 to 7.87 feet)
- Weight: approx. 150 to 260kg (approx. 330.69 to 573.20 lbs)
- Habitat: on land and ice around the North Pole

Along with the brown bear, the polar bear is one of the largest of the bear species. The white fur that covers polar bears' bodies means that they are sometimes referred to as "white bears."

Polar bears are strong swimmers, and it is said that they can swim for distances of up to 65km, at a speed of 6.5km/h. They also have acute senses of smell and hearing, useful when hunting as this allows them to detect the scent of seals swimming beneath the ice. Polar bears are able to endure a lean diet or periods of fasting, and can survive up to six months on only one seal.

Except for during mating season or when females are bringing up young, polar bears are solitary animals. Male bears and female bears who are not pregnant do not hibernate.



Tools

- Scissors
- Paste, or woodwork glue
- Stencil pen, or bodkin
- Ruler

Notation Key

- Scissors line
- Mountain fold
- - - Valley fold
- ⊕ Glue spot
- A1, B1 Parts No.

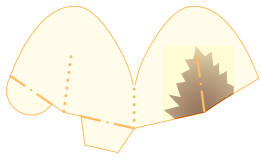
- ◆ The Pattern are divided into three blocks:
A (head), B (body), C (legs).
Follow the instructions for each block to assemble your polar bear.

<Caution>

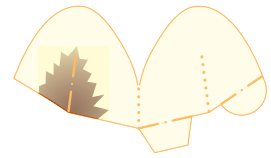
- ✘ Keep scissors and glue away from small children.
- ✘ Be careful not to cut your fingers when using scissors.

A Head parts

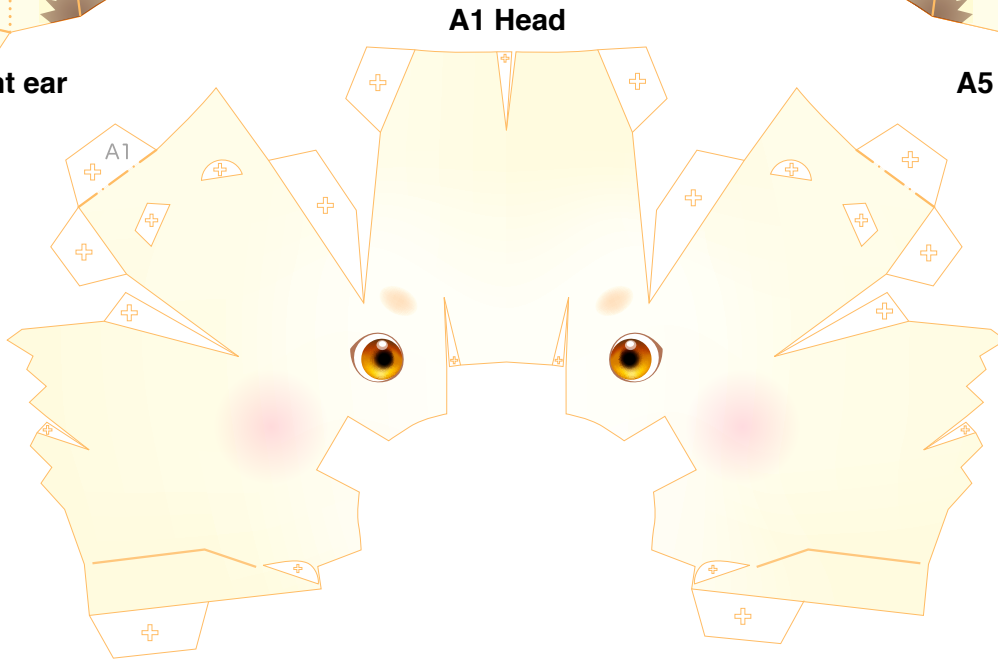
Refer to Assembly Instructions: Page1 / Page2.



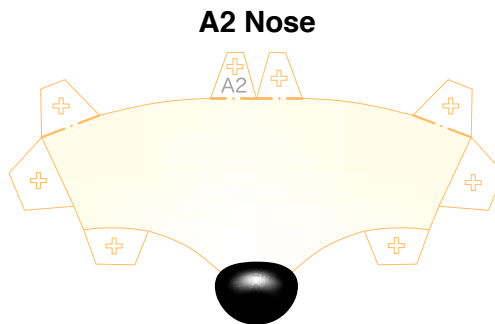
A6 Right ear



A5 Left ear



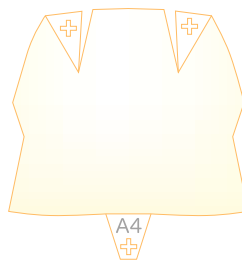
A1 Head



A2 Nose



A3 Mouth

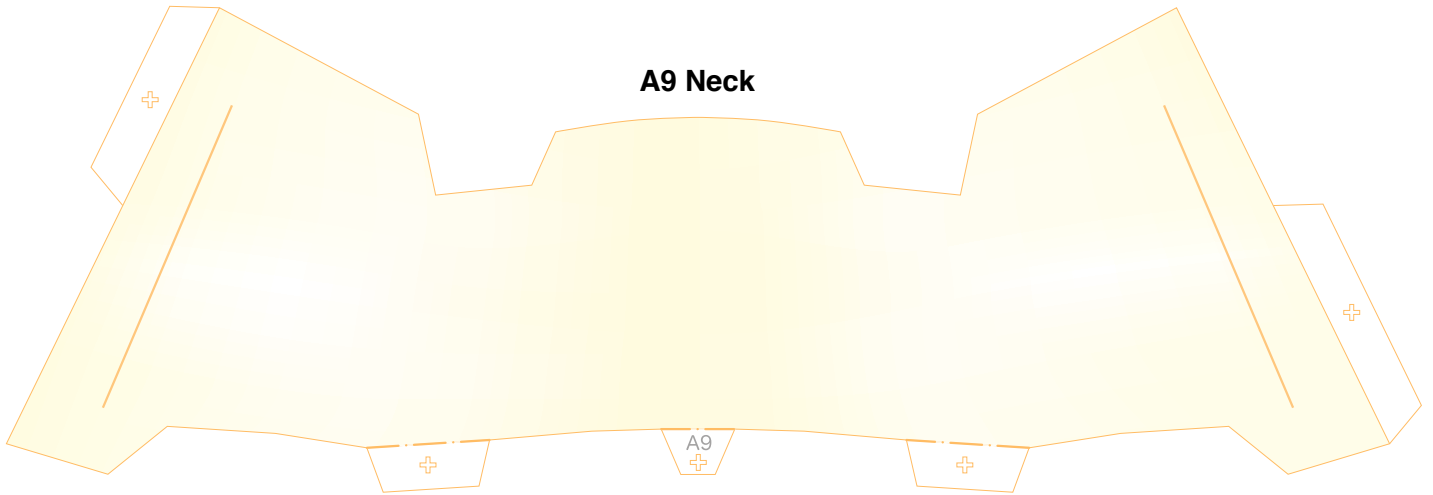


A4 Jaw



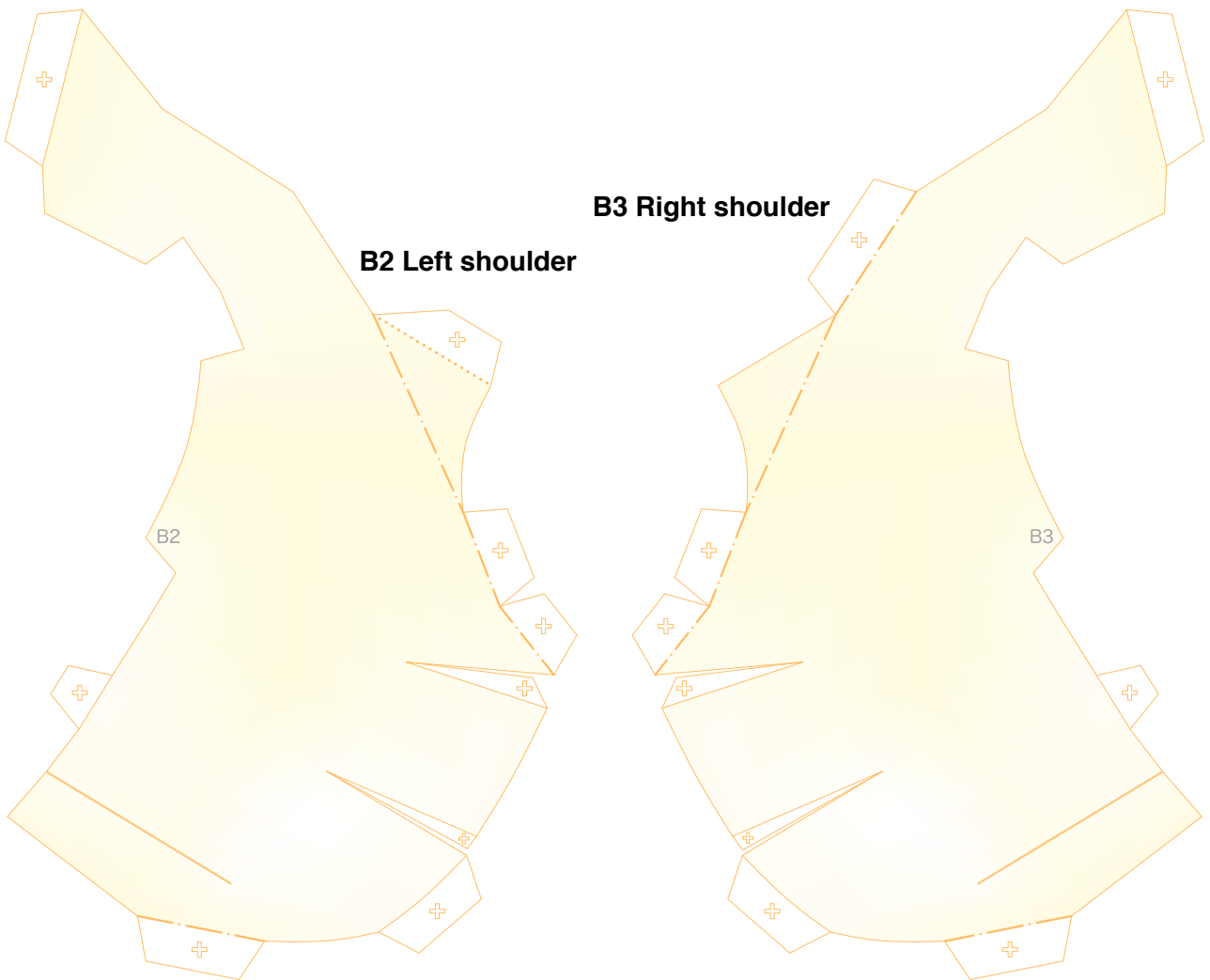
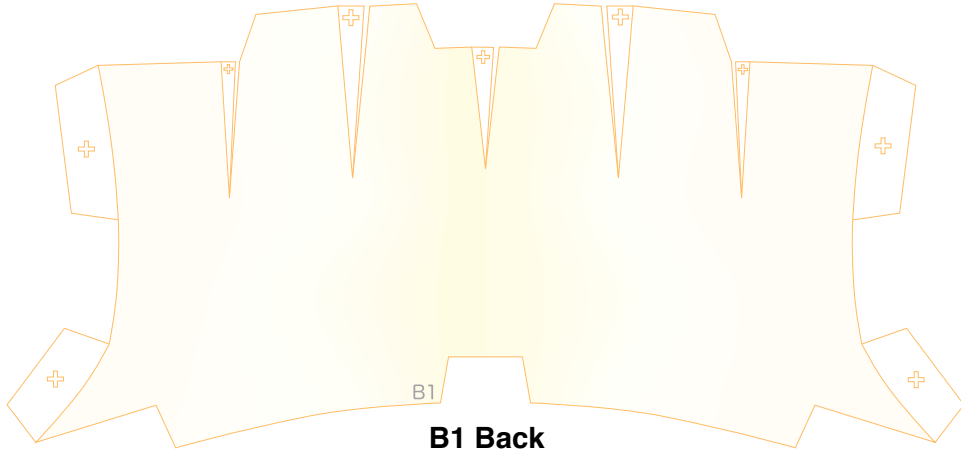
Head parts

Refer to Assembly Instructions: Page2.



B Body Parts

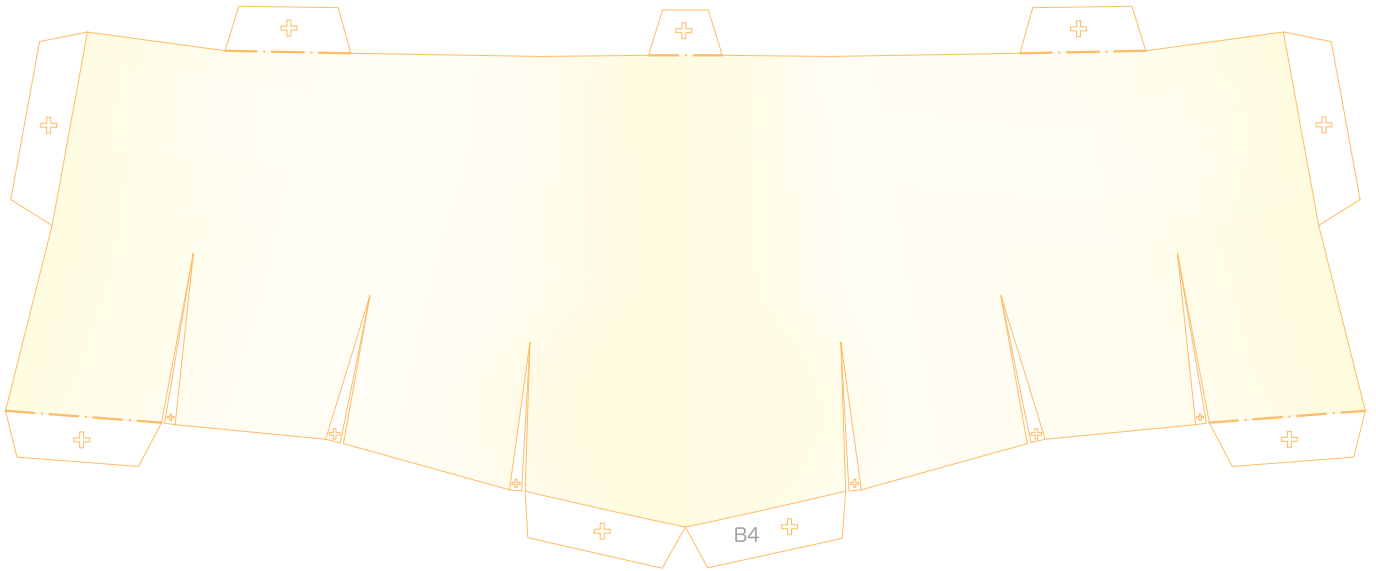
Refer to Assembly Instructions: Page2 / Page3.



B Body Parts

Refer to Assembly Instructions: Page3.

B4 Back

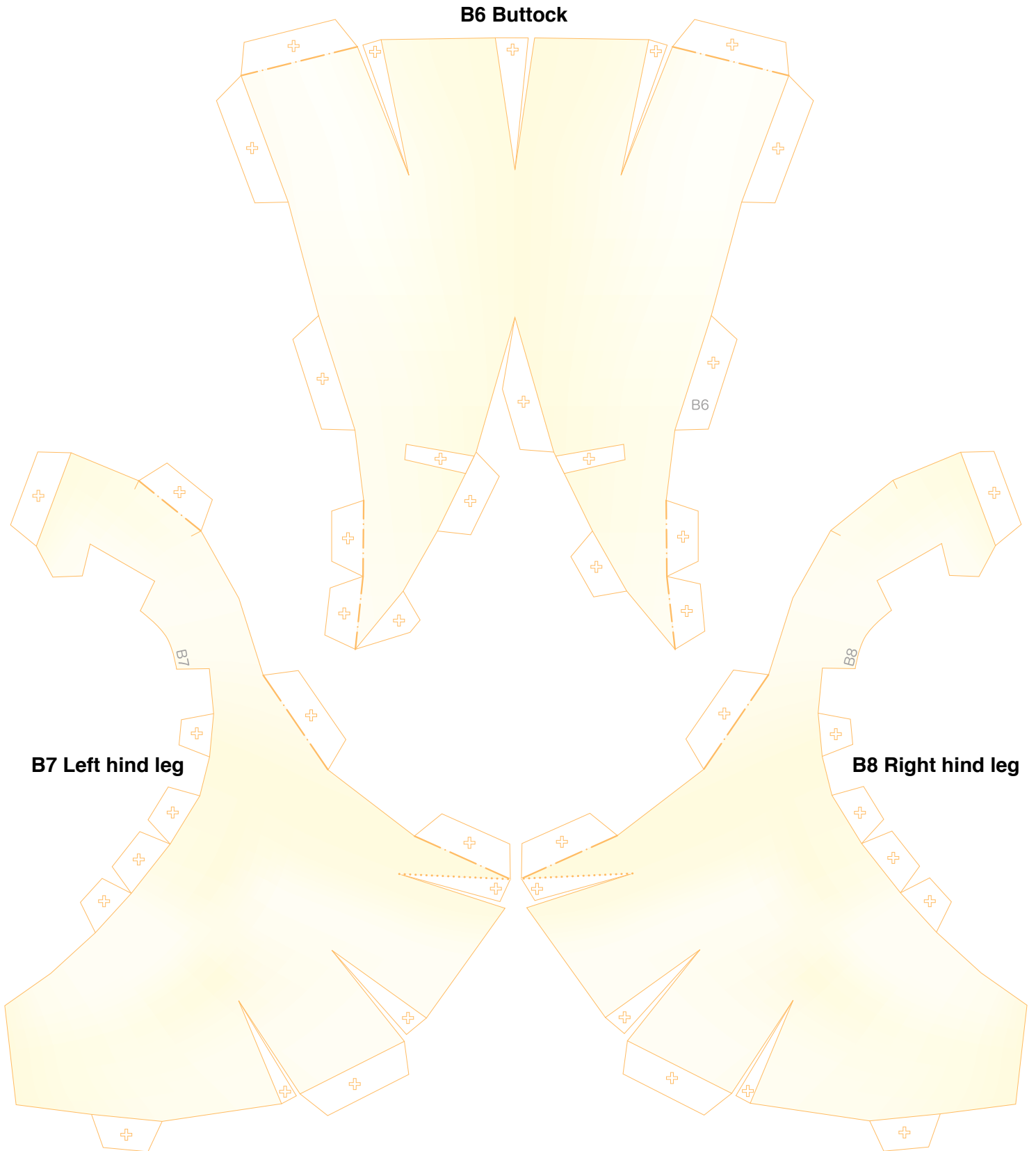


B5 Belly



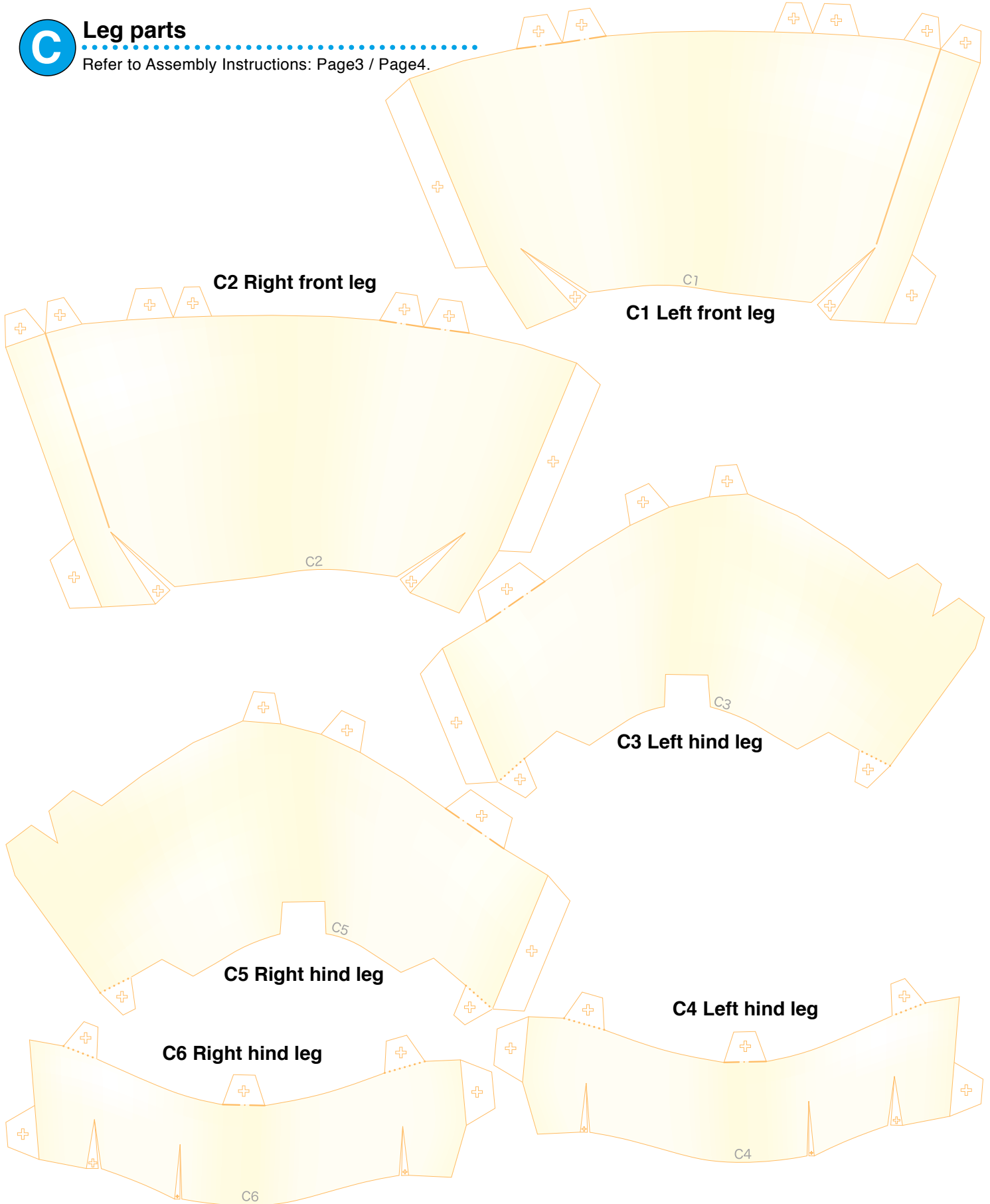
B Body Parts

Refer to Assembly Instructions: Page3.



C Leg parts

Refer to Assembly Instructions: Page3 / Page4.



C Leg parts

Refer to Assembly Instructions: Page4.

