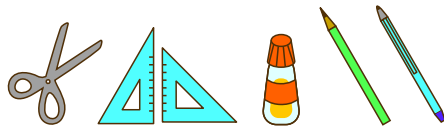




Assembly tip

- Writing the number of each section on its back side before cutting out the sections is highly recommended.
(* This way, you can be sure which section is which even after cutting out the sections.)
- Fold and crease mountain folds and valley folds before applying glue.
- Take your time to cut out each piece carefully.
- Trace along the folds with a ruler and an exhausted pen (no ink) to get a sharper, easier fold.
- When applying glue to large areas, take care to prevent warping of paper that may be caused by over-application of glue.
Apply small amounts of glue around the peripheral of the piece or use dual-sided tape to minimize warping.

Necessary utensils



Scissors, set square, glue, pencil, used ballpoint pen

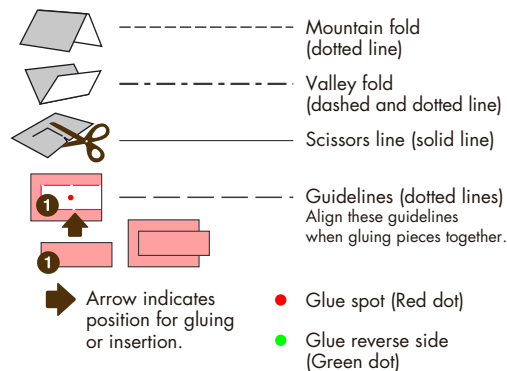
Caution

- Please read the Assembly Instructions carefully, and assemble in order as shown on the pattern sheets.
- This papercraft involves using glue, scissors, and other utensils and materials that may be dangerous to young children.
Please work somewhere out of reach of young children.

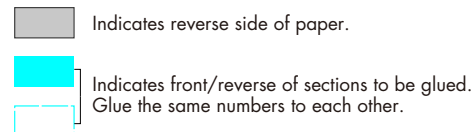
Assembly Instructions

Three A4 sheets (No. 1 to No. 3)

Notation Key

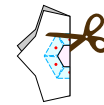


The following are used in the assembly instructions.

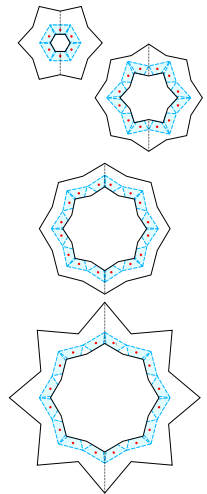
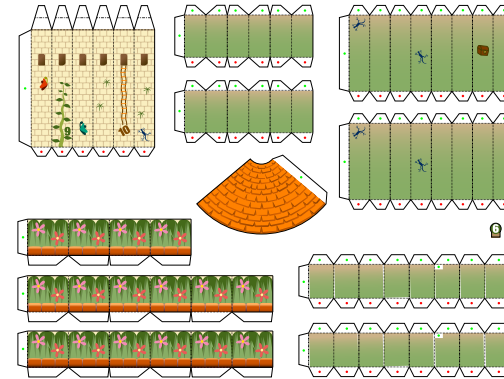


Main materials for the castle

Prepare the materials.
Cut out the parts, and fold them in advance.

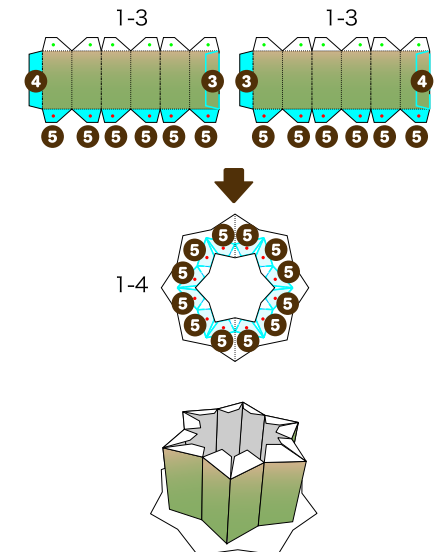
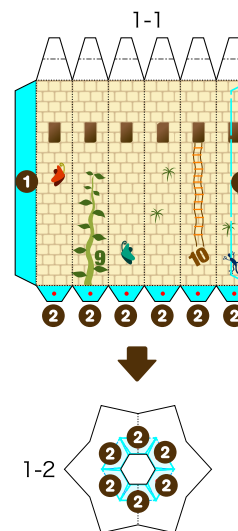


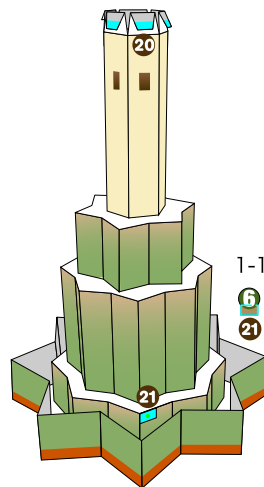
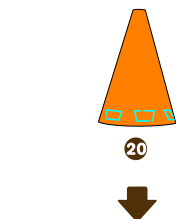
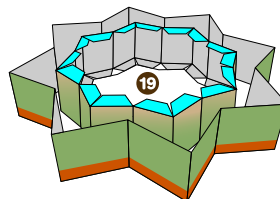
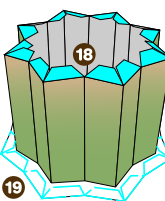
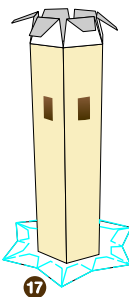
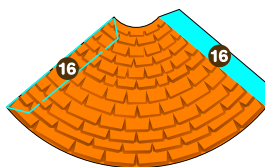
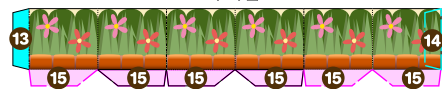
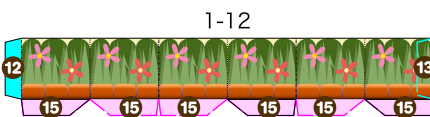
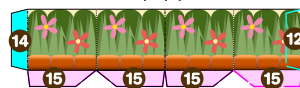
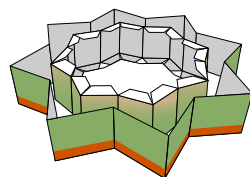
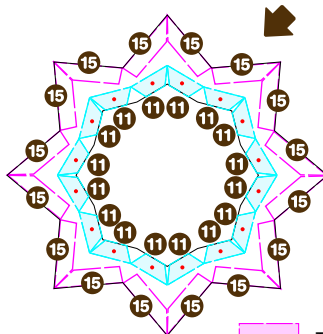
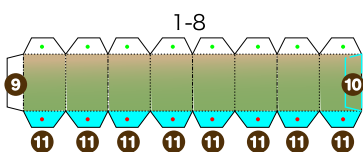
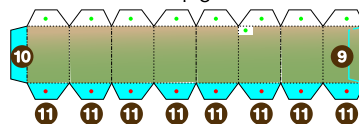
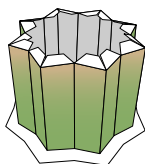
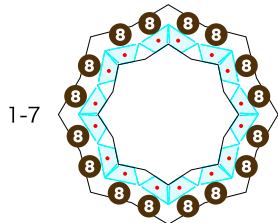
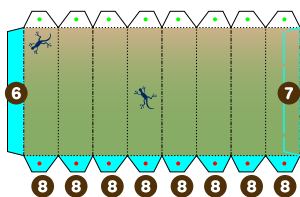
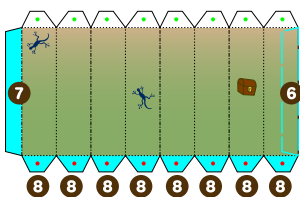
For the 4 regular polygons, cut off the outline, give mountain folding and cut out the part indicated with pink.



How to build the center of the castle

Glue and insert the parts in the order of the numbers.

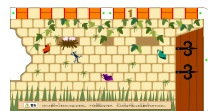
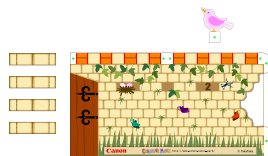
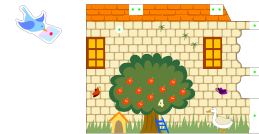
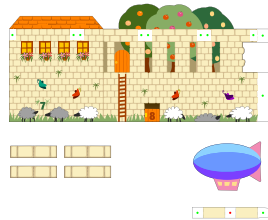




The center of the castle is complete!

Materials for the ramparts

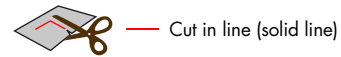
Prepare the materials.
Cut out the parts,
and fold them in advance.



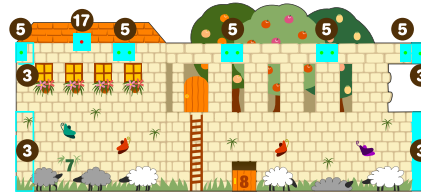
How to build the ramparts

Apply glue and insert in order
as indicated by numbers.

This shows the gluing
parts of the rear sides.
Glue together the parts
with the same numbers.



C-2 5 4 4 5
x 4 pieces

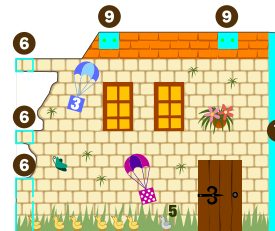


C-1

B-3 8 8 9 9
x 4 pieces

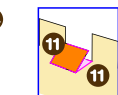


B-1

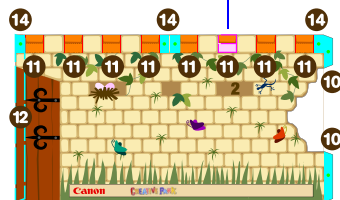


B-2

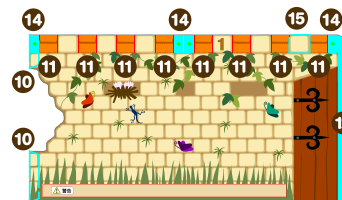
A-3 13 13 14 14
x 4 pieces



A-4 15
Glue it anywhere
you like on the top brick.



A-1



A-2

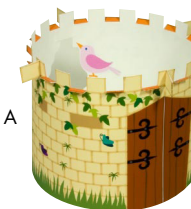
Rampart C



Rampart B



Rampart A



Rampart C

Rampart B

Rampart A



You have finished a merry-go-round castle!

How to enjoy the merry-go-round castle

Turn the 3-storied ramparts round and round
to the left and right and look for the numbers
from 1 to 10. Enjoy various combinations of
the picture patterns, too.

