



### Instructions

Pattern: 10 sheets No. of Parts: 25

**You will need:** scissors, glue, a used ballpoint pen

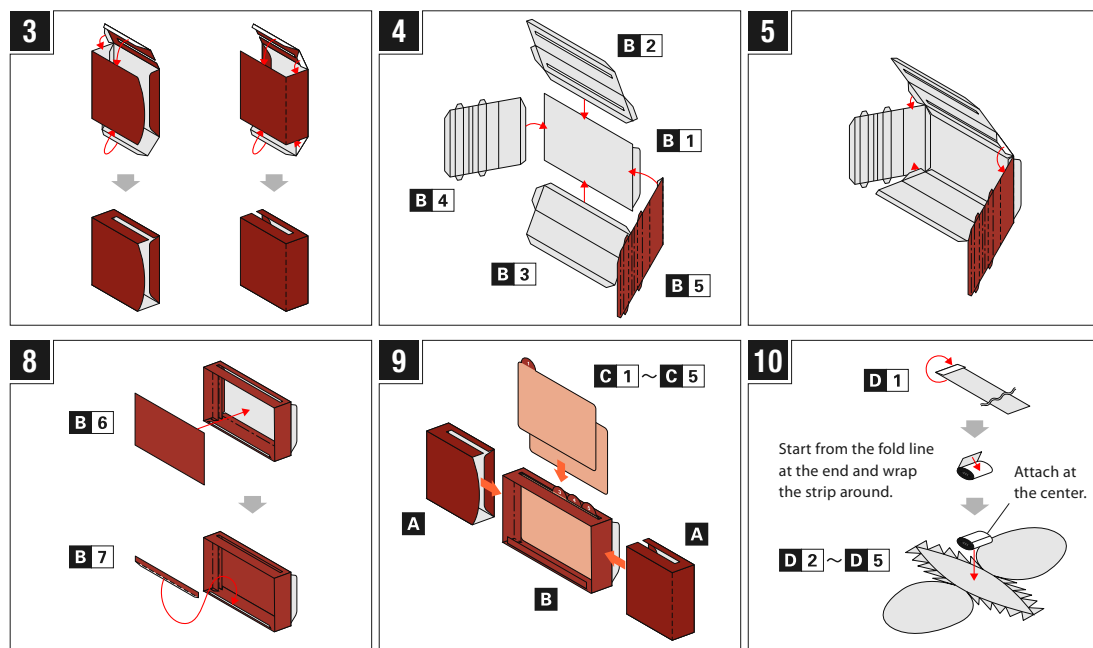
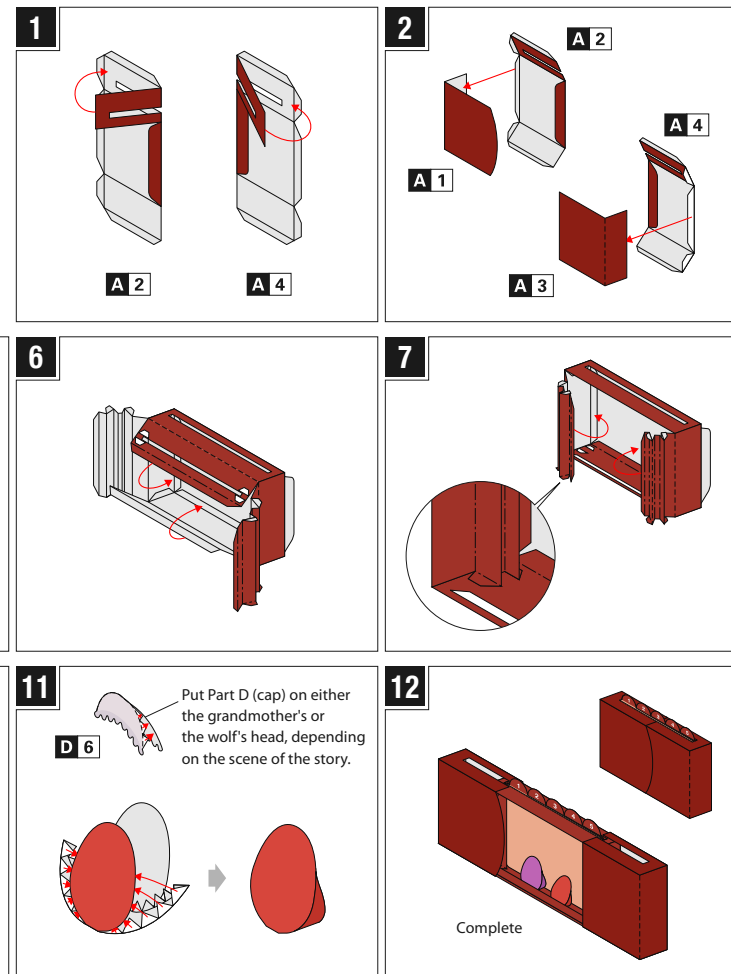
**Assembly Tip:** Trace along the folds with a used pen (no-ink) to get a sharp, easier fold.

----- Mountain fold    - - - - - Valley fold    ——— Scissors line

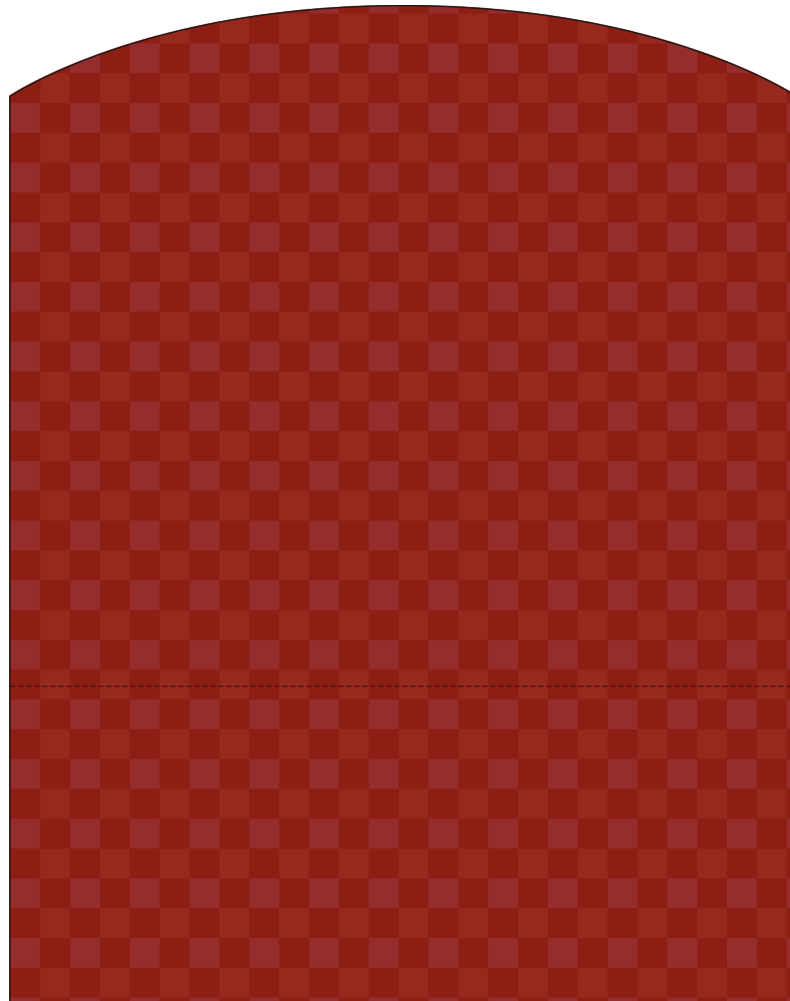
 Cut out

 Glue spot

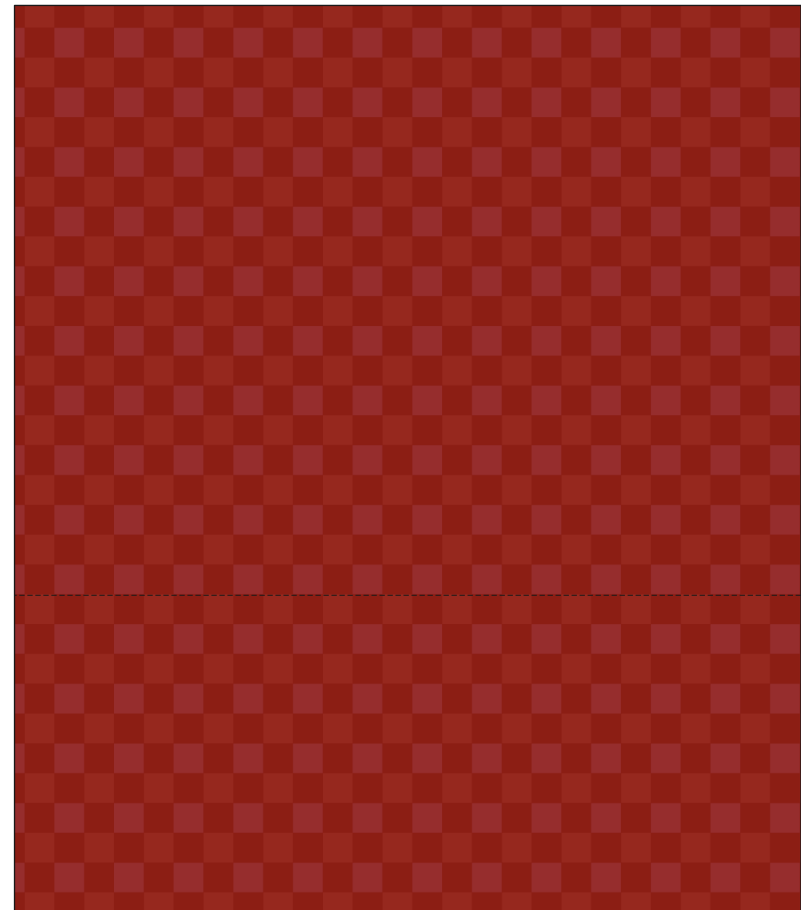
**[Caution]** Glue, scissors and other tools may be dangerous to young children so be sure to keep them out of the reach of young children.



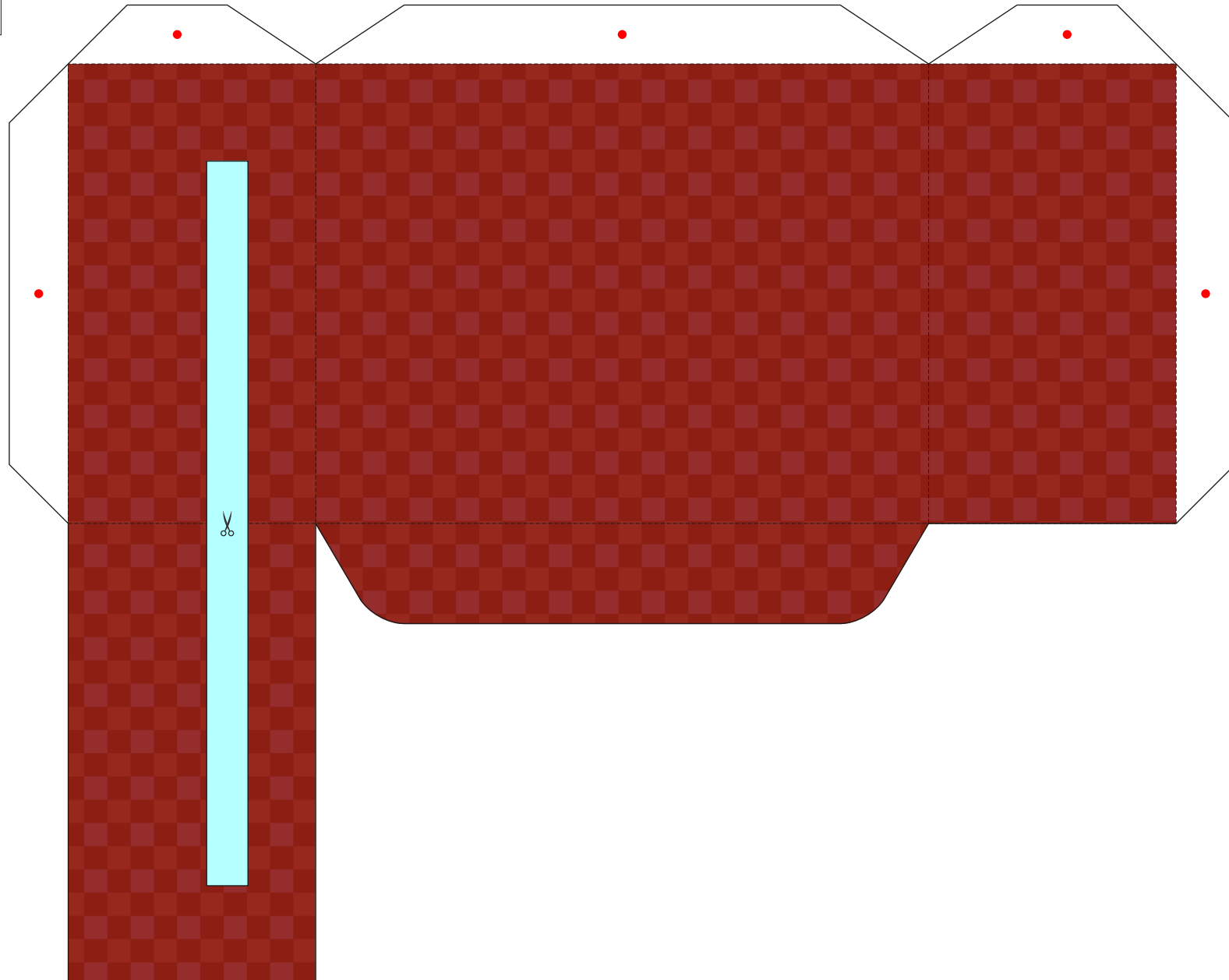
**A 1**



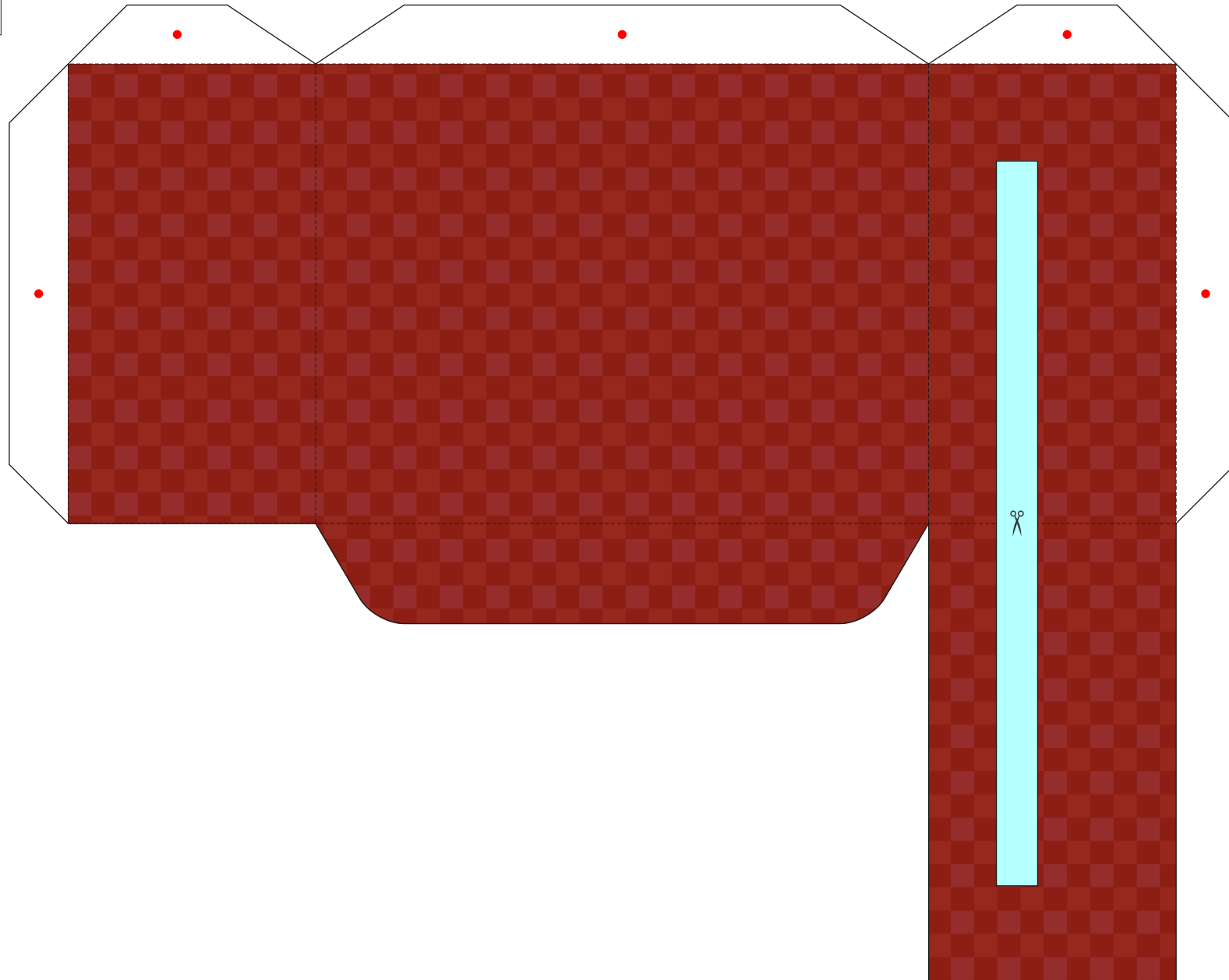
**A 3**



**A 2**



**A 4**



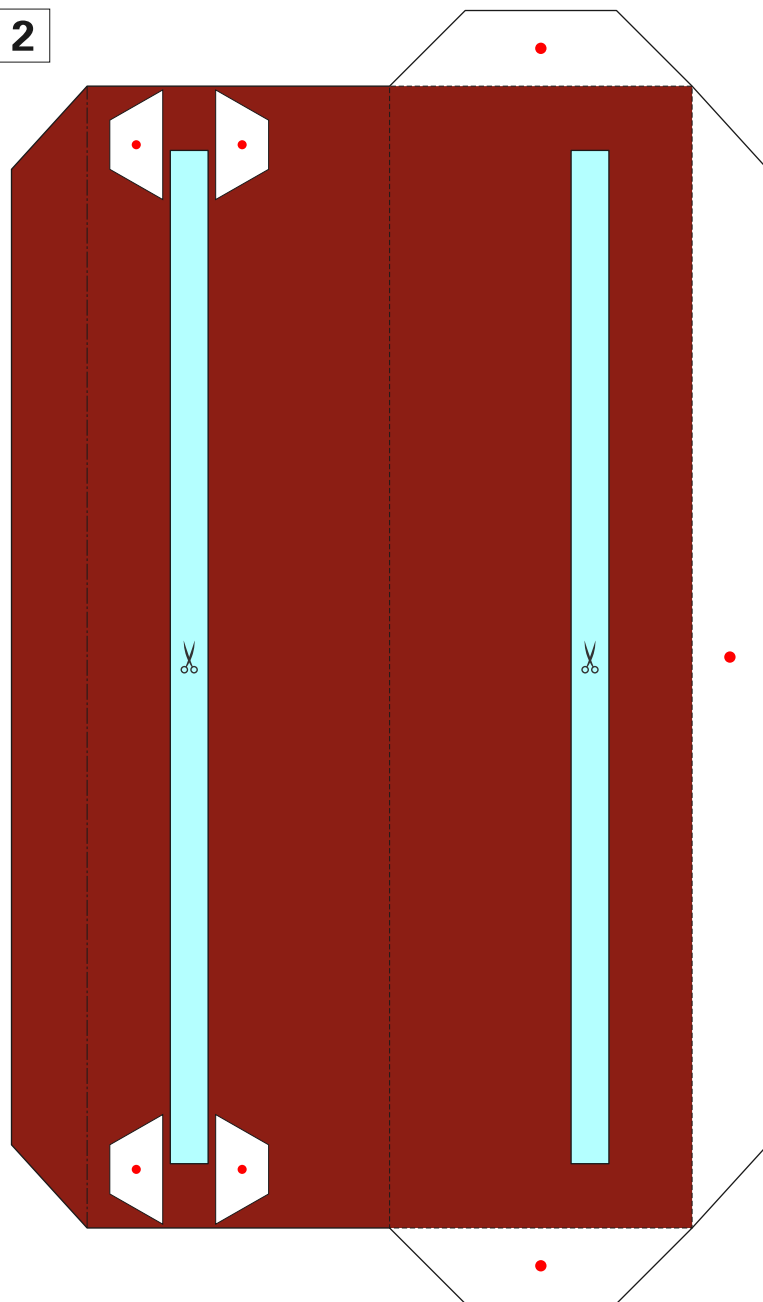
**B 1**



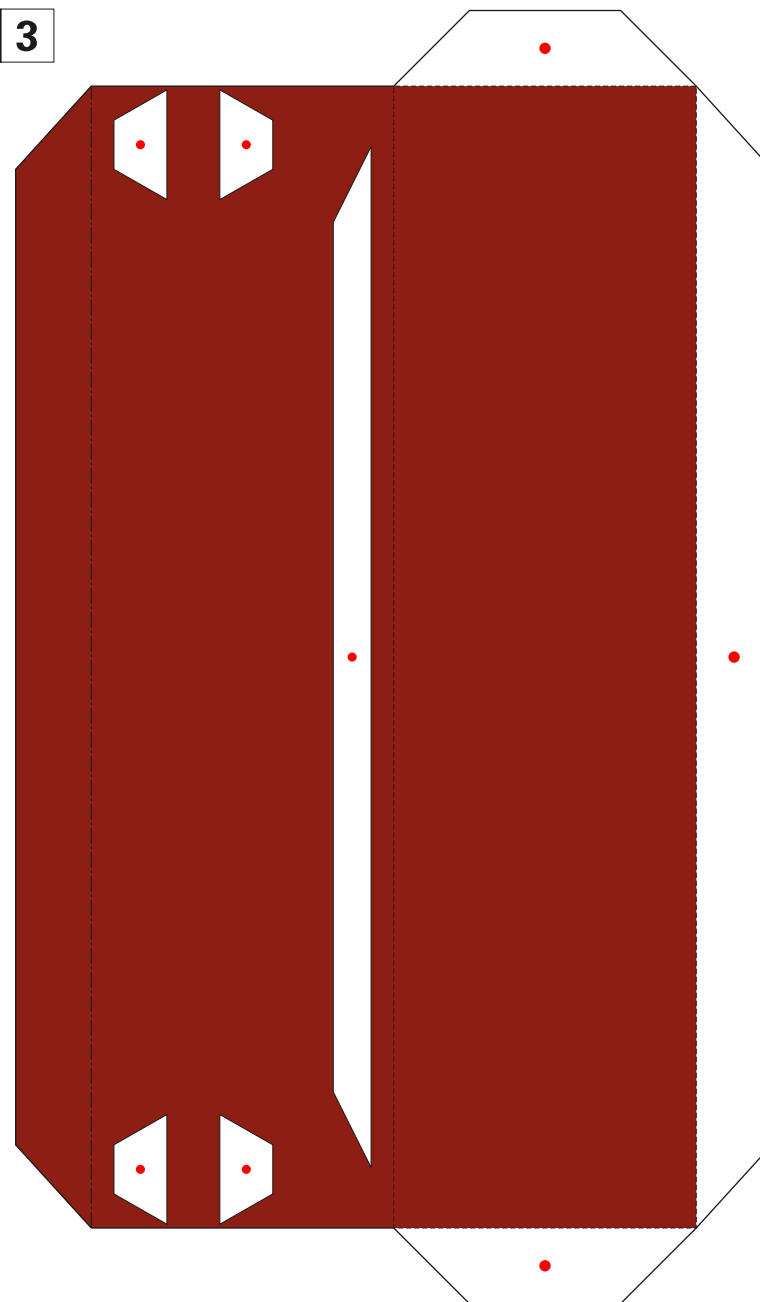
**B 7**



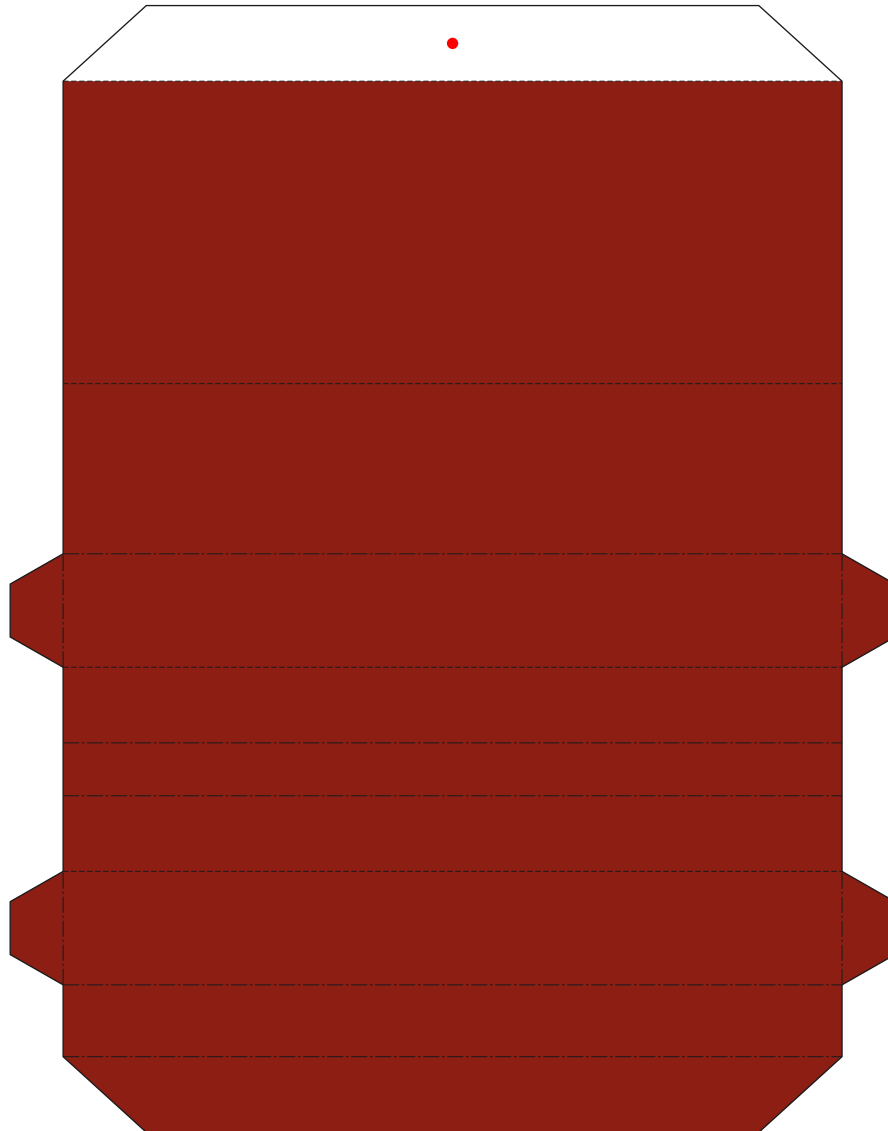
B 2



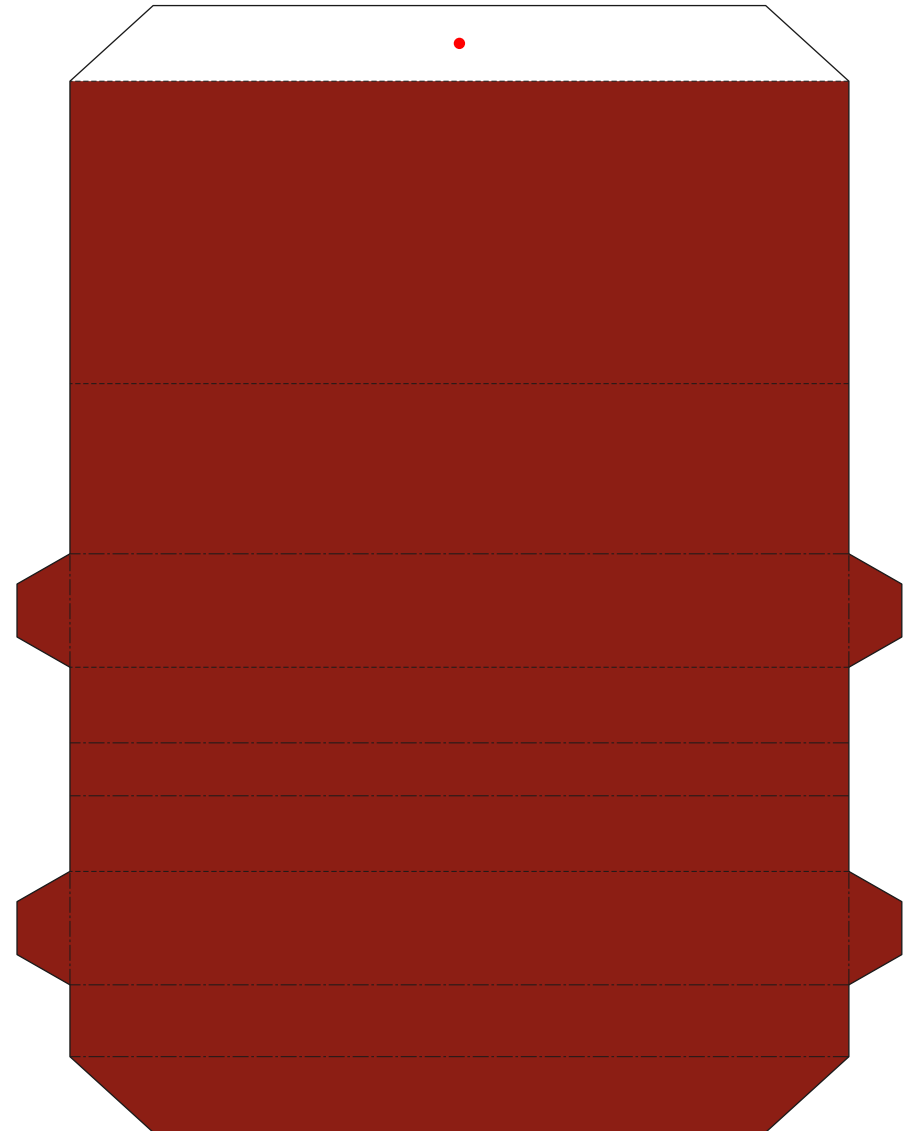
B 3



B 4



B 5



**B 6**



**C 1**

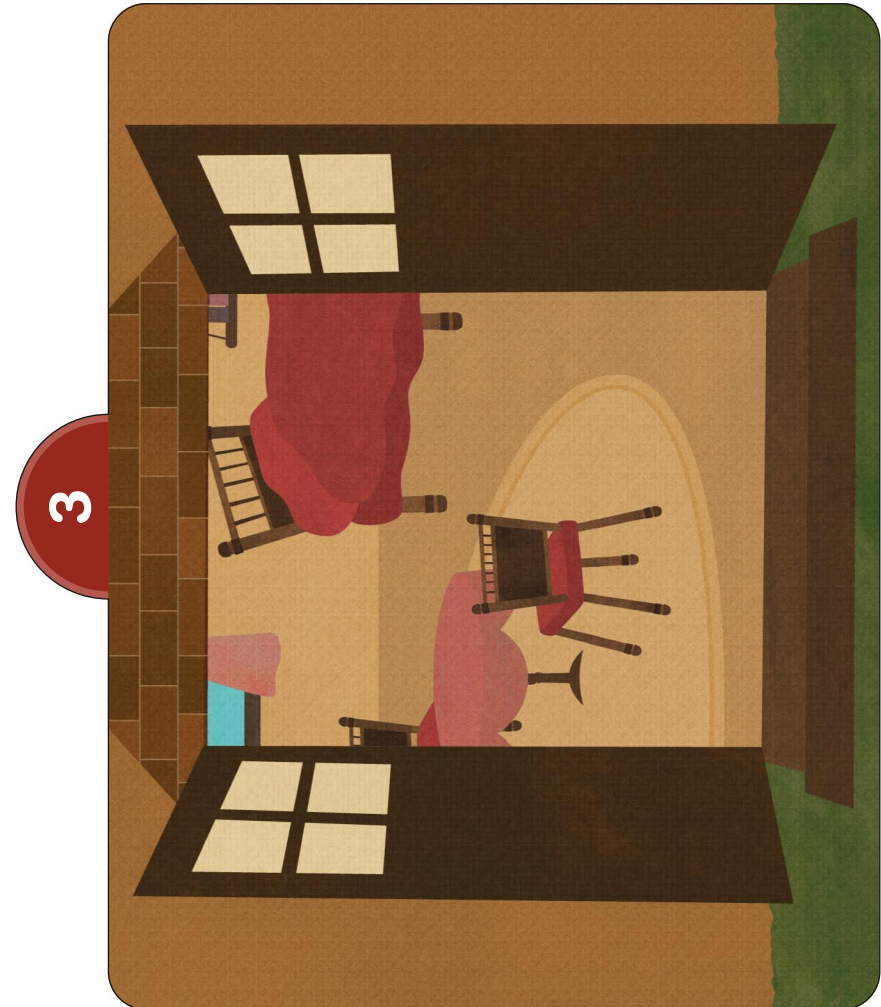




**C 2**



**C 3**



**D 1**


**C 4**

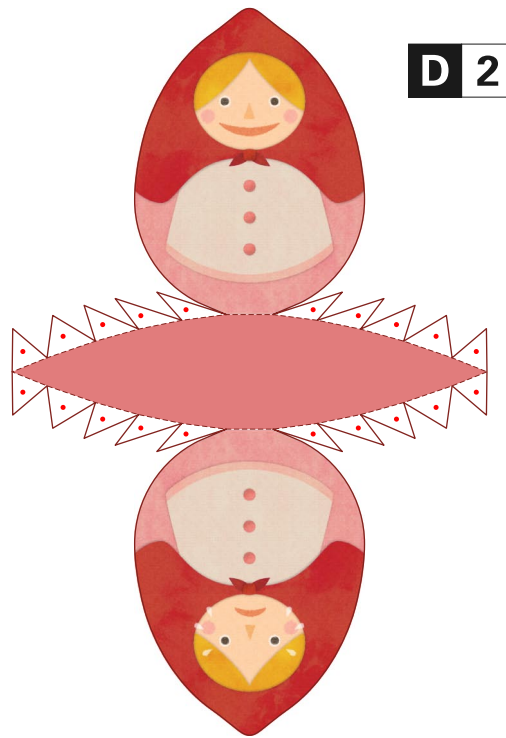


**C 5**

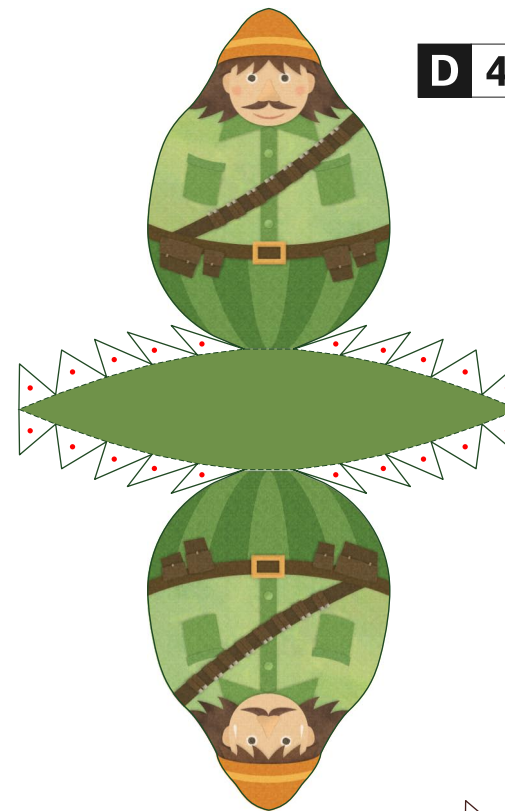


**D 1**



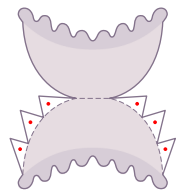


**D 2**

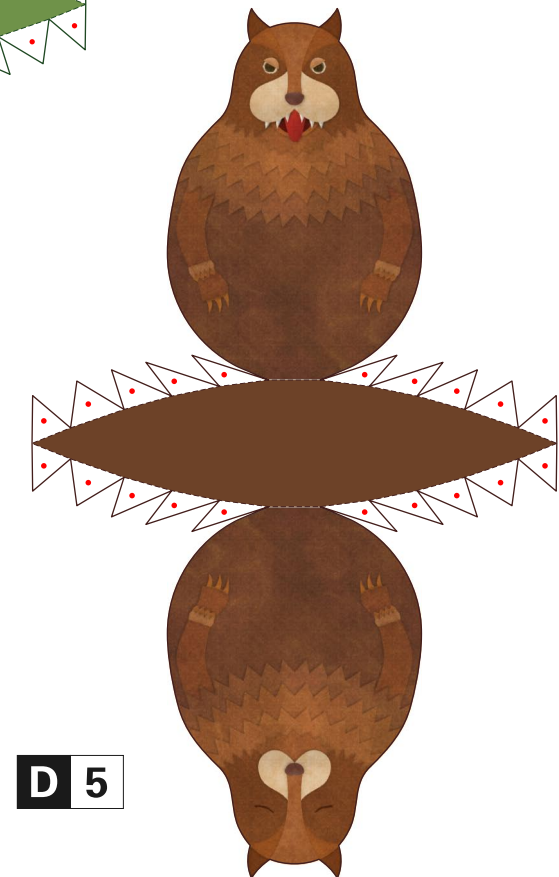
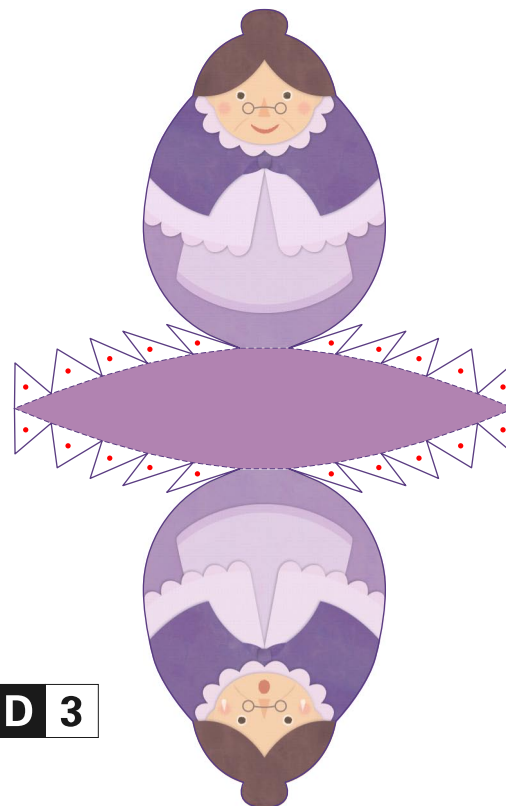


**D 4**

**D 6**



**D 3**



**D 5**