

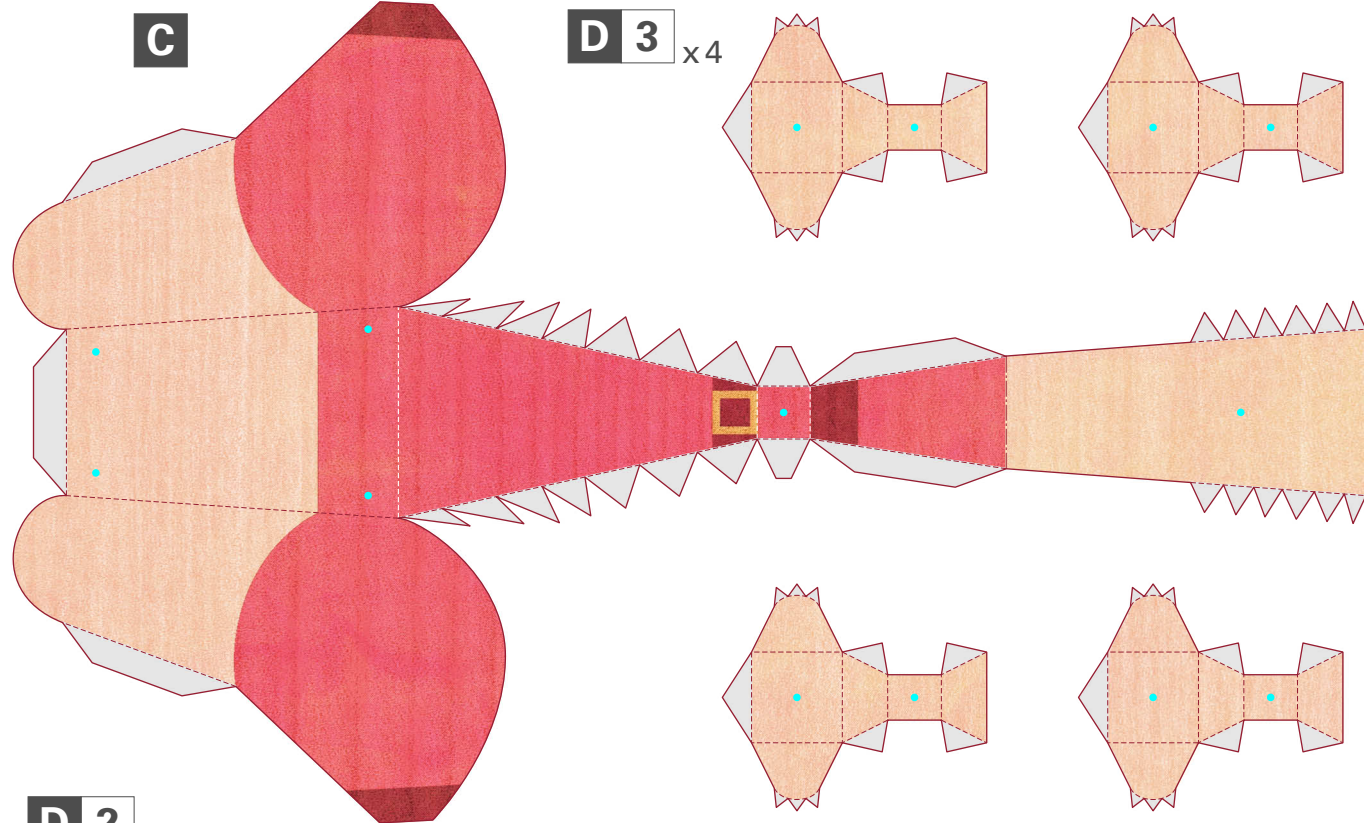
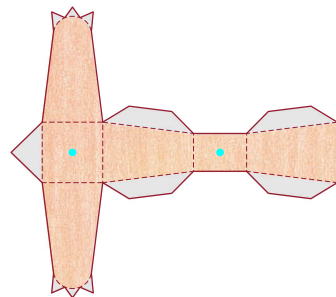
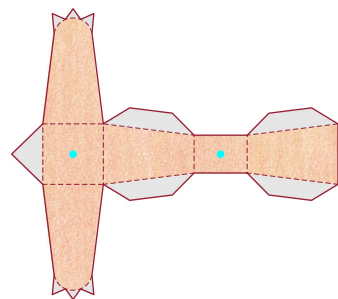
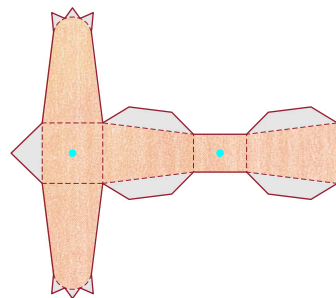
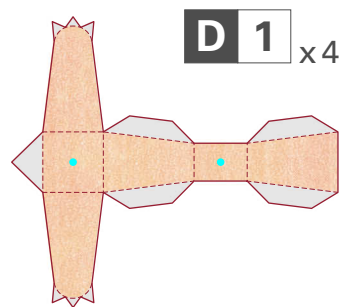
● **Pattern:** 6 sheets ● **Assembly Instructions:** 4 sheets ● **Number of parts:** 41

● **You will need:** Scissors, glue, strong adhesive, a ruler, a used ball-point pen  
String (a fairly strong type of thread. The color is up to you, but we recommend gray, flesh-colored, or pink.)

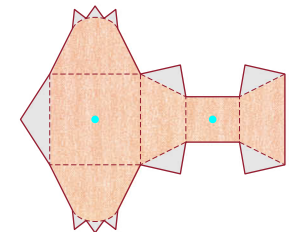
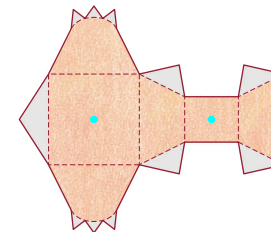
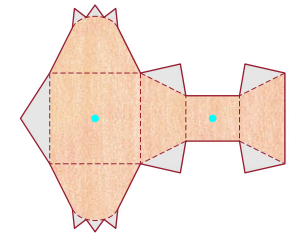
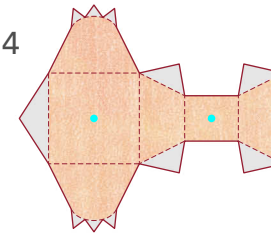
● **Assembly tip:** Trace along the folds with a ruler and a used pen (no ink) to get a sharper, easier fold.

----- Mountain fold    - - - - - Valley fold    ——— Scissors line  
 ■ Glue spot    ■ Cut out    ——— Cut in line  
 ● Hole for threading string through (use an old pen or other object to make the hole.)

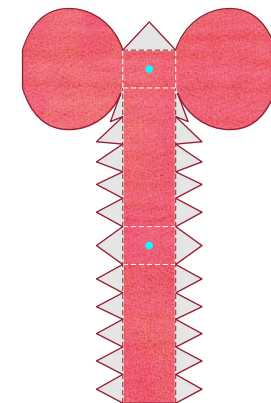
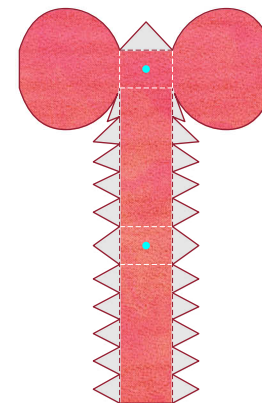
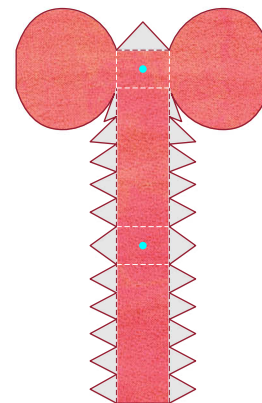
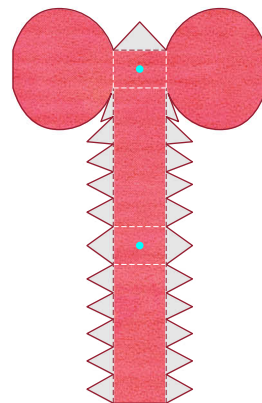
**Caution:** Glue, scissors and other tools may be dangerous to young children so be sure to keep them out of the reach of young children.



**D 3** x4

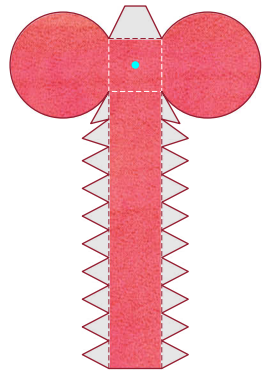


**D 2** x4





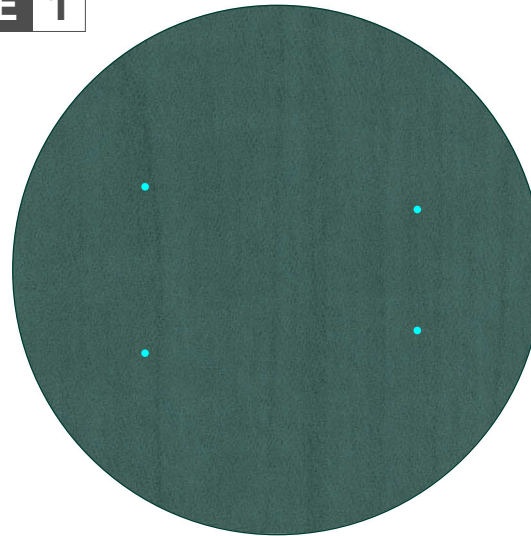
**B 1**



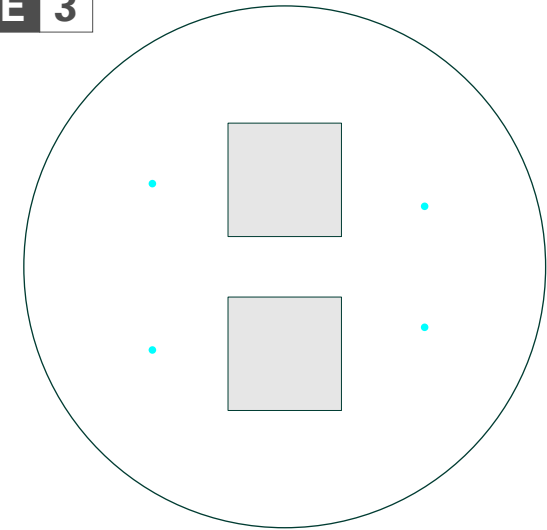
**B 2**



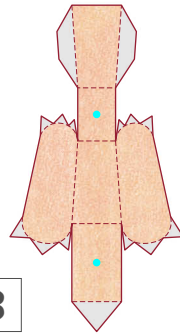
**E 1**



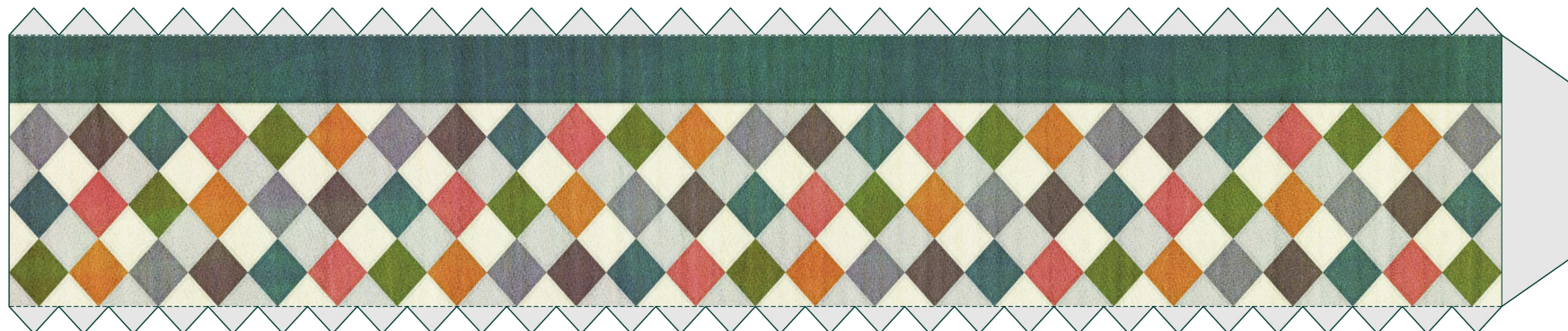
**E 3**



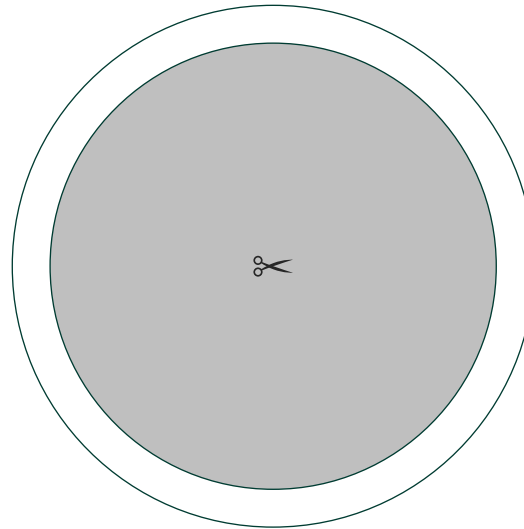
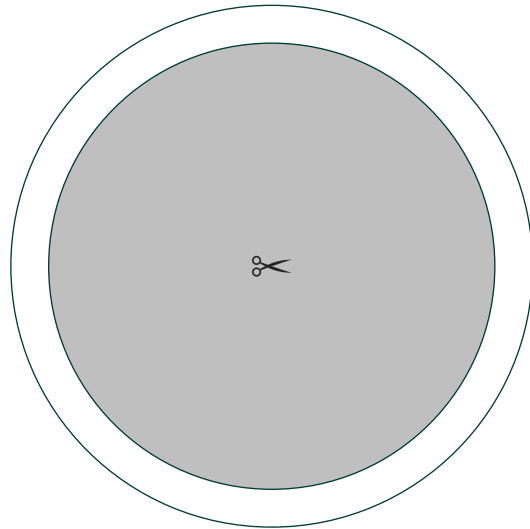
**B 3**



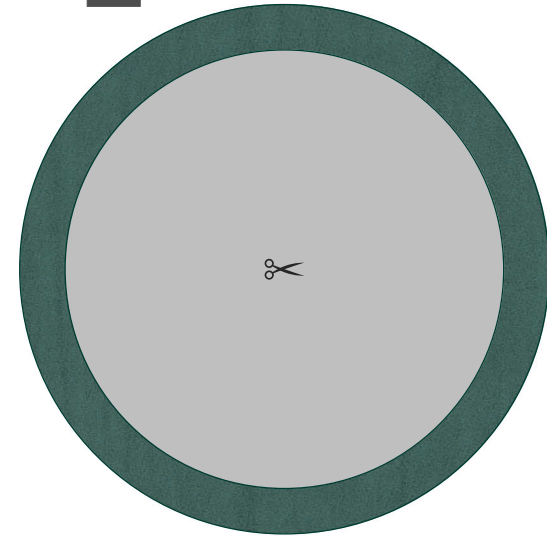
**E 2**



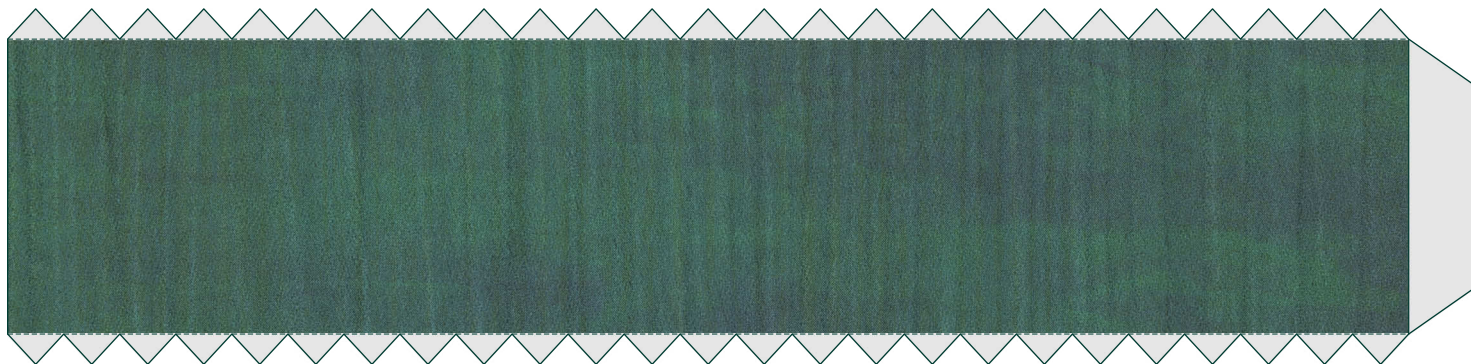
**F 2** x2



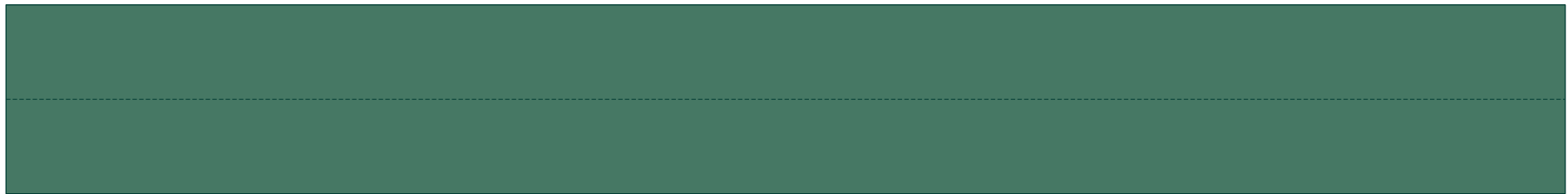
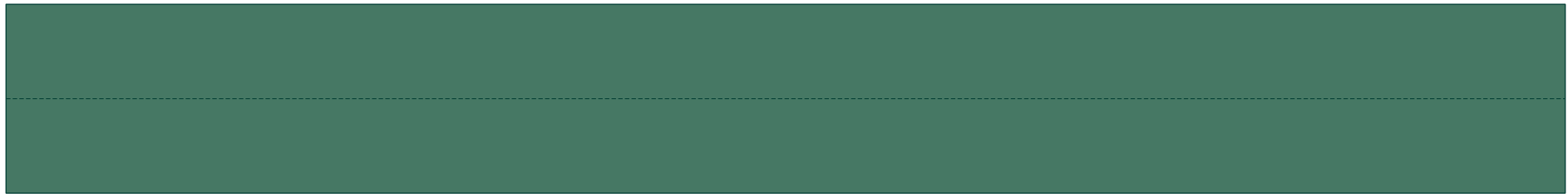
**G**



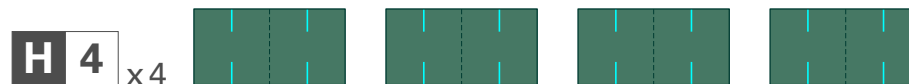
**F 1**



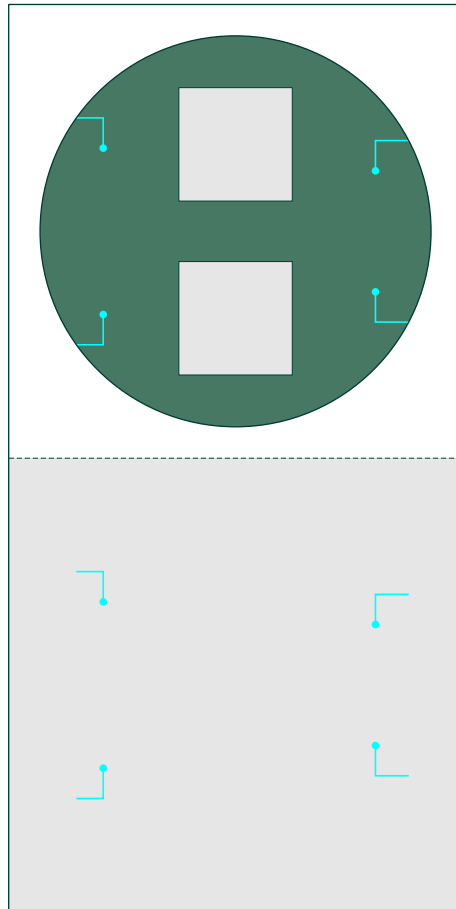
**H 2**



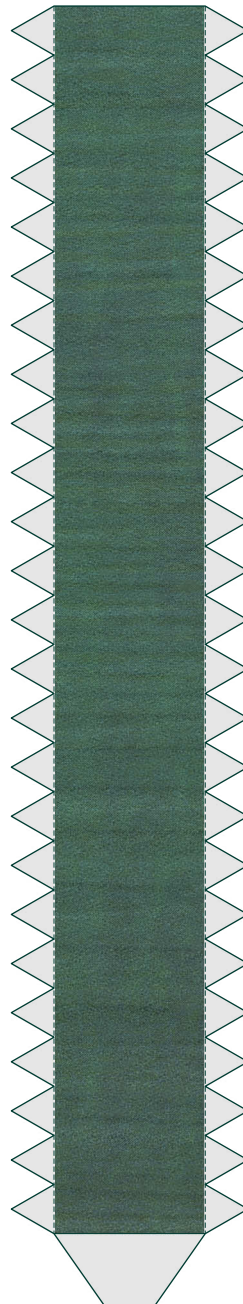
**H 3**



**H 1**



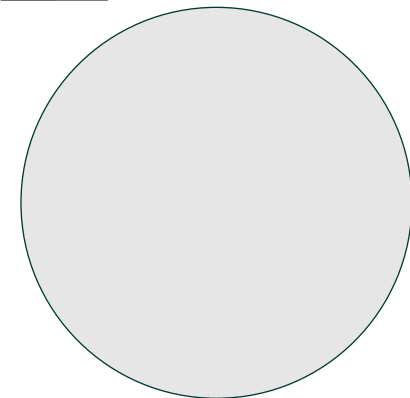
**I 1**



**I 2**



**I 4**



**I 3**

