



Assemble the card

Use pattern: Page2 to Page3.

① Cut out A1 by cutting along the lines.

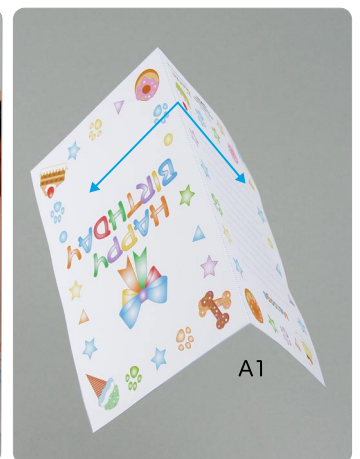
★ Cut along the line marked ———.



A1Card ← Parts No. / Parts name

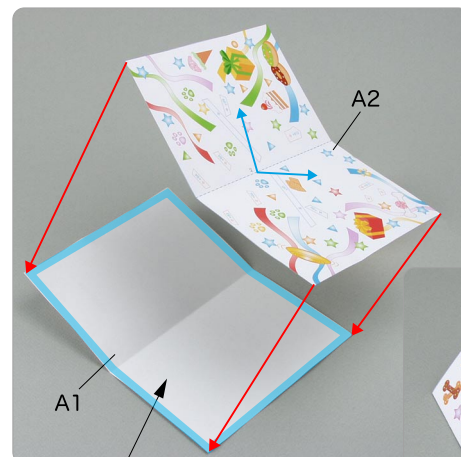
② Make a mountain fold on A1.

★ Trace along the mountain fold line with a stencil pen, scoring it to make it easier to fold.



③ Attach A1 and A2, and the card is complete.

Using the photo as a guide, attach in the direction of the arrow.



Check that A1 and A2 are the right way up, place some paste on the blue area of the back side, and attach them together.

Tools

Scissors

Paste, or woodwork glue

Stencil pen, or bodkin

Ruler

Notation Key

———— Scissors line

..... Mountain fold

— · — · — Valley fold

⊕ Glue spot

A1, B1 Parts No.

+A1, +B1 Numbers of parts to be attached

◆ The Assembly instructions are divided into two blocks:
A (Card) and B (Dog and "Happy Birthday" Sign).
Follow the instructions for each block to assemble your card.

<Caution>

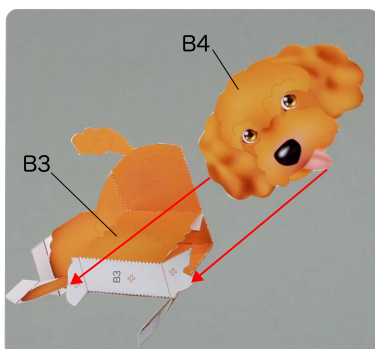
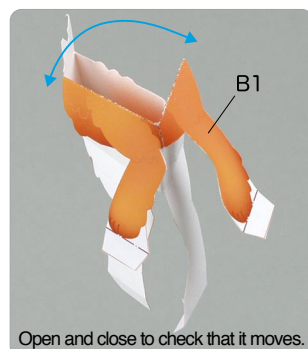
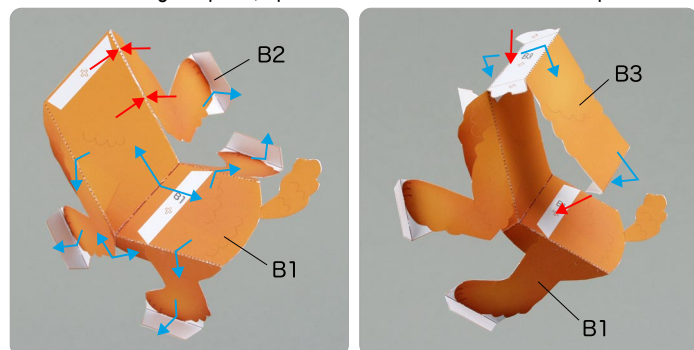
- ※ Keep scissors and glue away from small children.
- ※ Be careful not to cut your fingers when using scissors.

B Make the Dog and "Happy Birthday" Sign

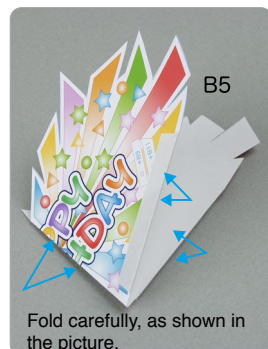
Use pattern: Page4 to Page5.

① Attach B1 to B4, and attach them to A2.

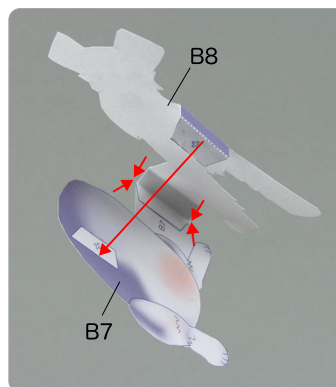
★ After attaching the parts, open and close to check if the card opens smoothly.



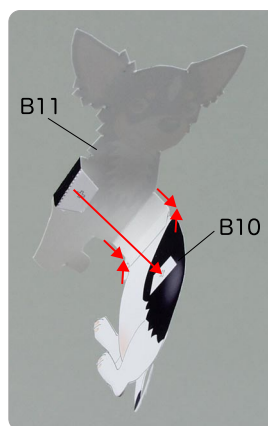
② Attach B5 to the card.



③ Assemble B7 and B8, and glue them to the card along with B6.



④ Assemble B10 and B11, and glue them to the card along with B9.



⑤ Attach the parts from B12 to B16 to the card in order, and you're done!

