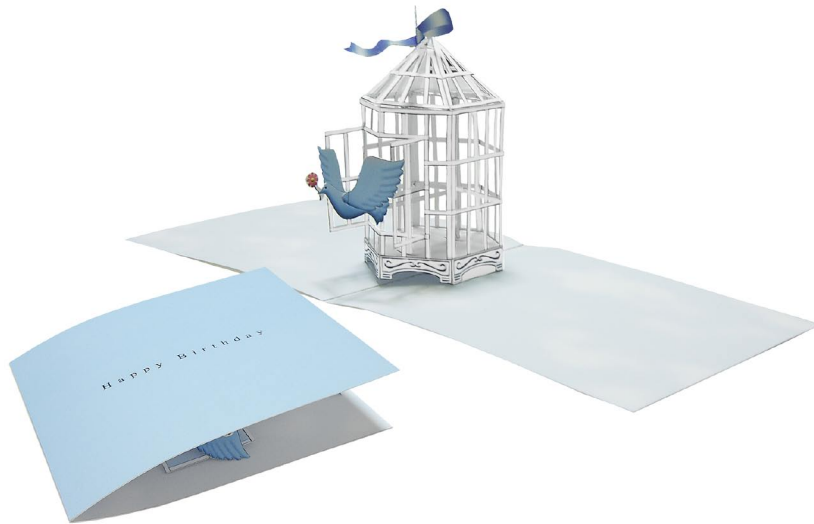


Canon Pop-up Card (Birdcage) : Assembly Instructions

Canon® is a registered trademark of Canon Inc. © HIROKO



Assembly Instructions

..... **Mountain fold**(dotted line) ——— **Scissors line**(solid line)
*Make a mountain fold. *Cut along the line.

- - - - - **Valley fold**
(dashed and dotted line)
*Make a valley fold. ——— **Cut in line**(solid line)
*Make a cut.

▲ **Black triangle**
Glue here

△ **White triangle**
Glue the back



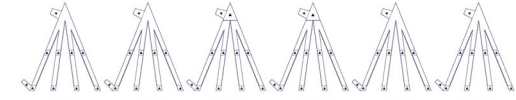
scissors, paste, a used ballpoint pen (tracing along the fold lines makes them easier to fold)



Caution: Glue, scissors, and other tools may be dangerous to young children so be sure to keep them out of the reach of young children.

1 Cut out the parts and crease them along the fold lines indicated.

● **Roof (vertical bars)**



● **Roof (horizontal bars)**



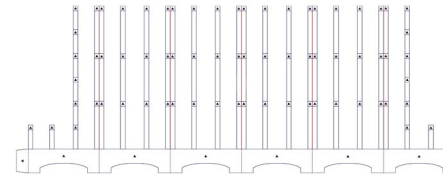
● **Horizontal bars**



● **Horizontal bars (door)**



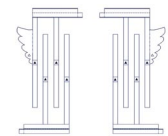
● **Vertical bars**



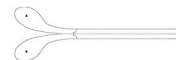
● **Doors(horizontal bars)**



● **Doors(vertical bars)**



● **Decorations**



● **Support A**



● **Supports B**



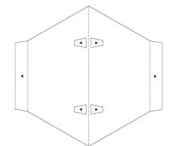
● **Supports C**



● **Support D**



● **Support E**

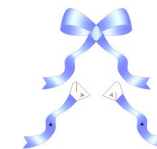


● **Floor**

● **Bird**



● **Ribbon**



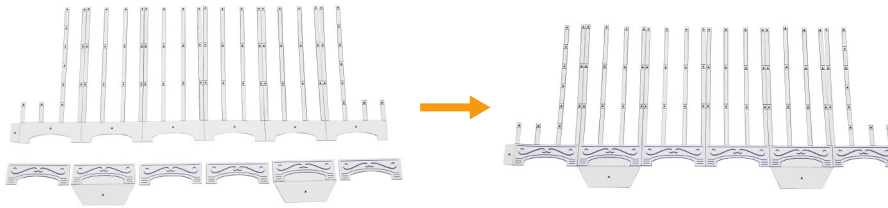
● **Held in bird's beak**



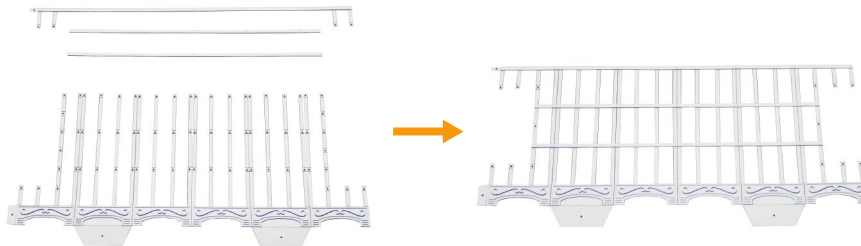
Canon Pop-up Card (Birdcage) : Assembly Instructions

Canon® is a registered trademark of Canon Inc. © HIROKO

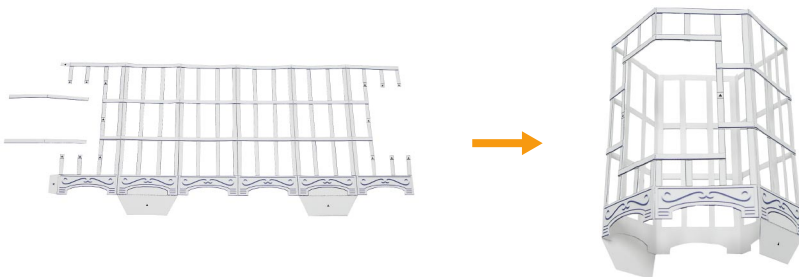
- 2** Stick decorative panels to bottom of vertical bars.
(Be careful to apply glue to the correct positions on the panels.)



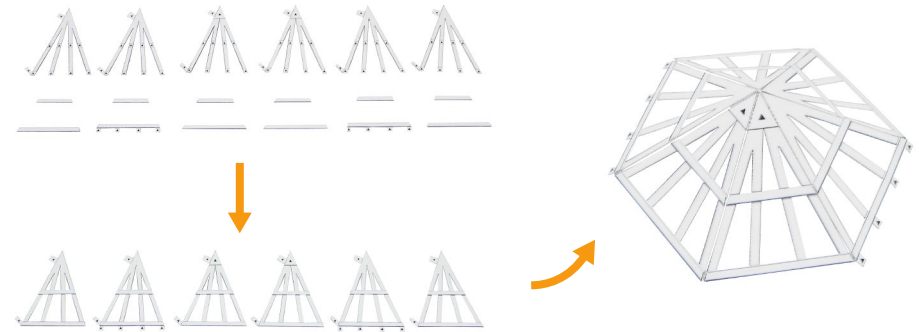
- 3** Stick the horizontal bars onto the glue spots on the vertical bars.



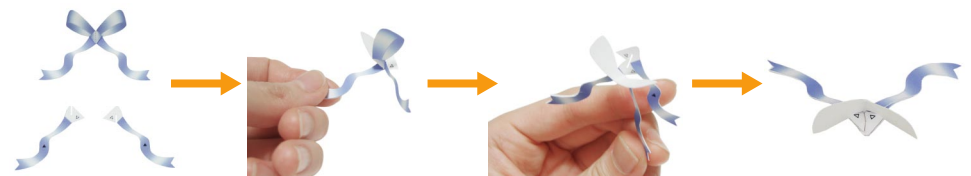
- 4** Stick on the vertical bars (door) matched up with the glue spots in assembly Step 3 and join up both ends of the bars to form a tubular shape.



- 5** Attach the horizontal bars to the vertical roof bars, then join these sections up to form an hexagonal cone, as shown in the photograph.



- 6** Glue one streamer onto the ribbon from the back, and attach the other by fitting it into the cutaway and then gluing it from the back.



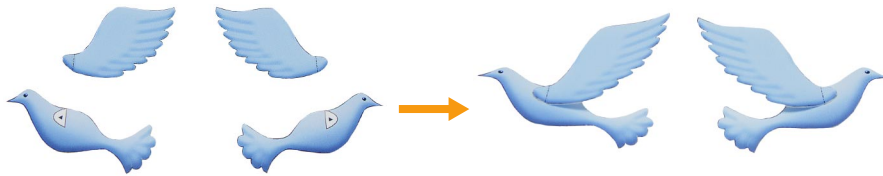
- 7** Stick the ribbon onto the roof section by gluing it at the glue spot.
* Fold the roof section to make the ribbon easier to stick on.



Canon Pop-up Card (Birdcage) : Assembly Instructions

Canon® is a registered trademark of Canon Inc. © HIROKO

8 Attach the wings to the bird.



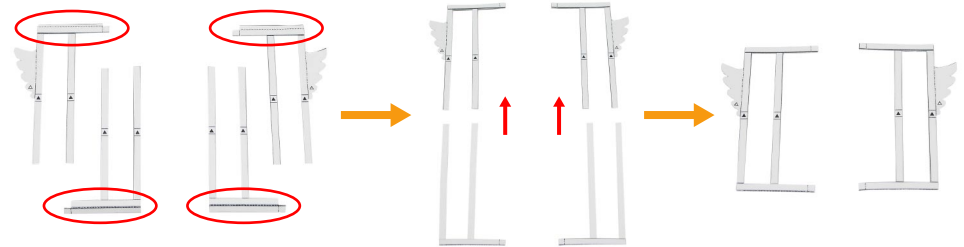
9 Fold support A along the center line and glue together on the inside.



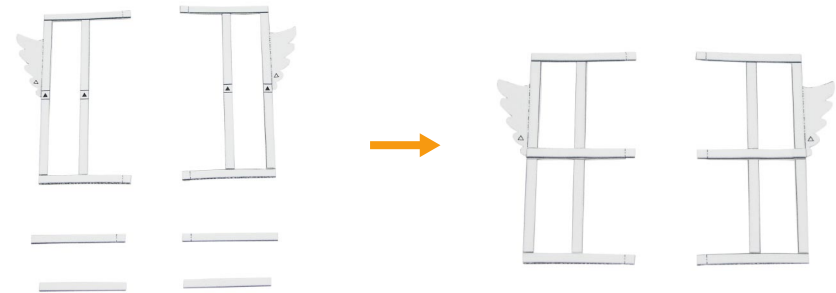
10 Glue the rear sides of the bird together so that they hold the support A in place at the glue spots. * You will be putting flowers, etc., into the bird's beak later in the assembly, so avoid putting any glue near there at this stage.



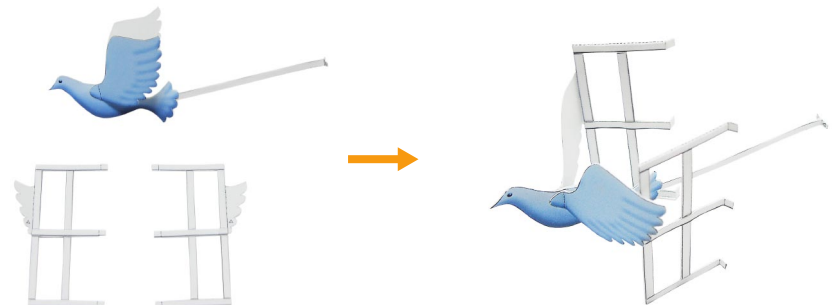
11 Fold the ends of the sections circled in red along the fold lines, and then glue at the back. Match up the pairs and then stick them together at the back.



12 Match up the horizontal bars of the cage door and stick them together. * Be careful not to get front and back mixed up.



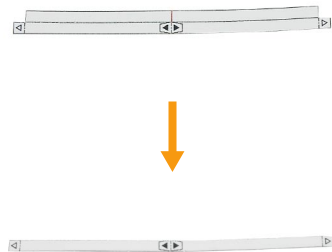
13 Line up the bird with the doors that have wing-shaped glue spots on them, and then stick on the bird.



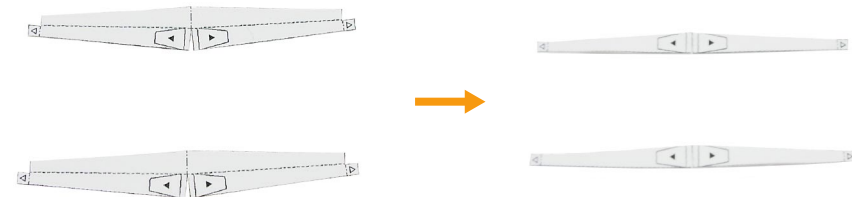
Canon Pop-up Card (Birdcage) : Assembly Instructions

Canon® is a registered trademark of Canon Inc. © HIROKO

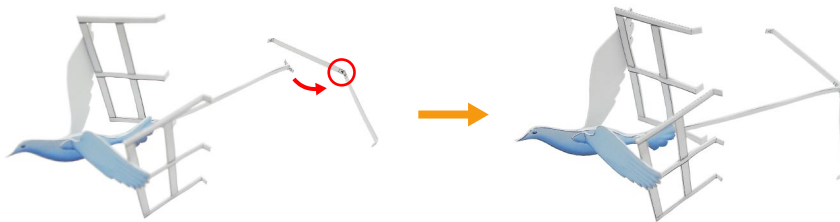
14 Fold support D along the center line and glue together on the inside.



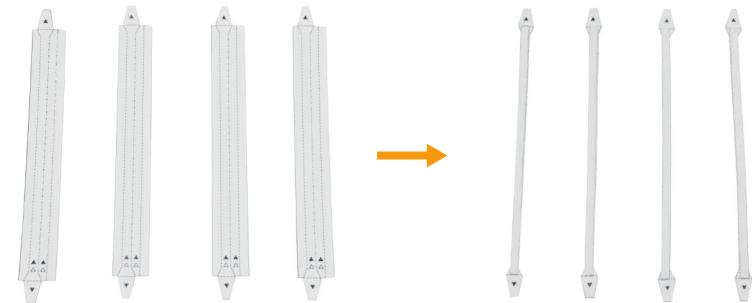
17 Fold supports B along the center line and glue together on the inside.



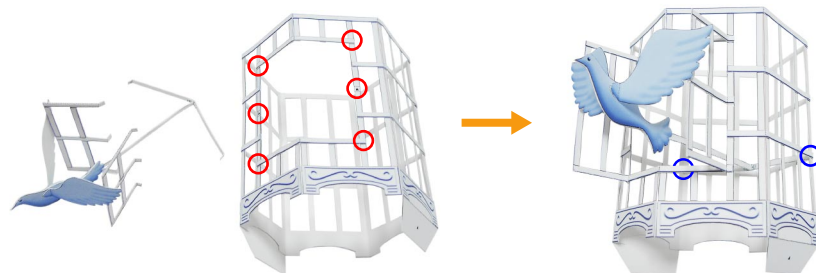
15 Stick support D and assembly Step 13 together at their glue spots.



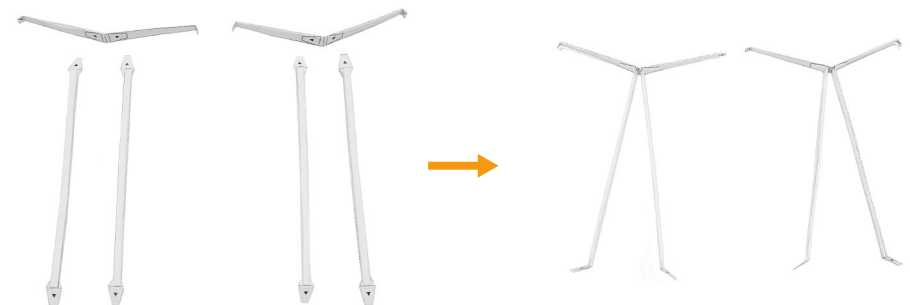
18 Fold supports C along the fold lines and stick them at the back to form sticks.



16 Insert support D from assembly Step 15 through the birdcage door and glue the assembly onto the birdcage at the spots circled in red. Glue support D onto the points circled in blue, where the vertical and horizontal bars intersect.



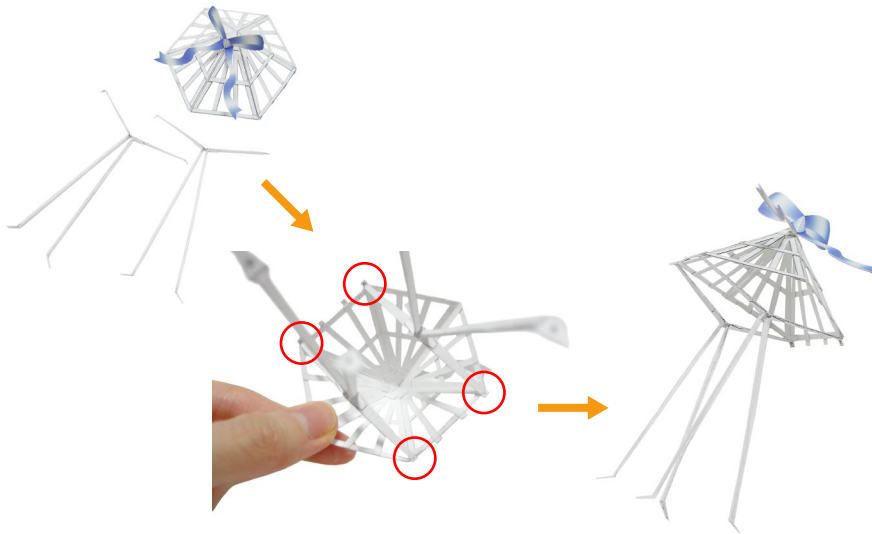
19 Stick supports C and supports B together at their glue spots.



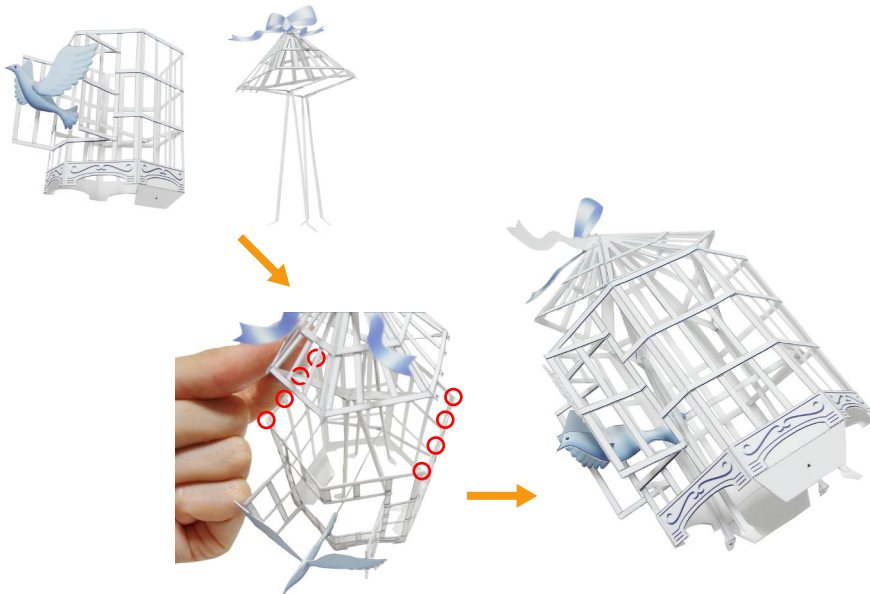
Canon Pop-up Card (Birdcage) : Assembly Instructions

Canon® is a registered trademark of Canon Inc. © HIROKO

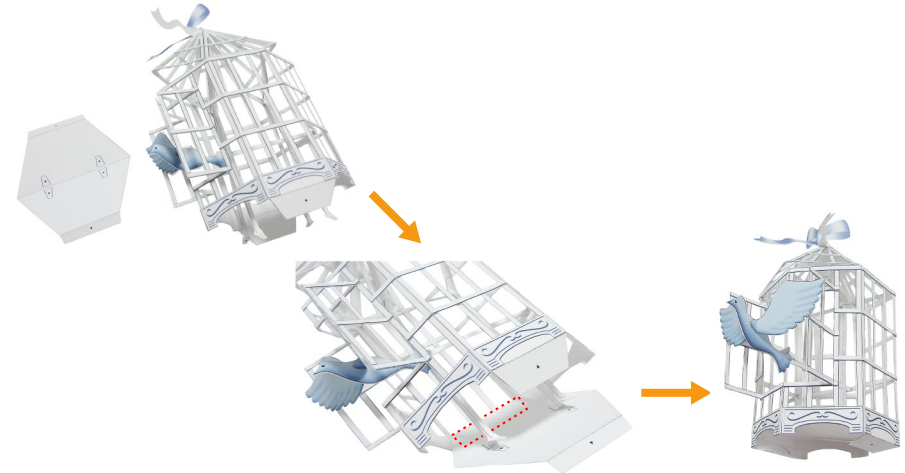
- 20** Attach assembly Step 19 to the hexagonal roof at the glue spots indicated.



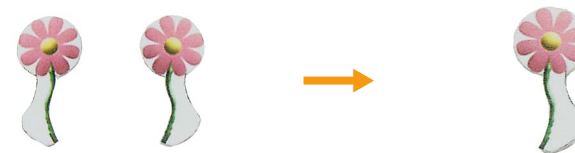
- 21** Insert support B, now attached to the roof, from the top of the birdcage so that the assembly straddles support A, then glue the roof onto the birdcage bars at the glue spots indicated.* Fold the birdcage to make the roof easier to stick on.



- 22** Insert the floor from the bottom of the birdcage. First glue one end of the floor (shown in dotted lines), then stick on support B in the center, and finally glue the other end of the birdcage to the floor.
* Fold the birdcage to make the floor easier to stick on.



- 23** Paste together the two sides of whatever the bird is to hold in its beak (the photograph shows a flower).



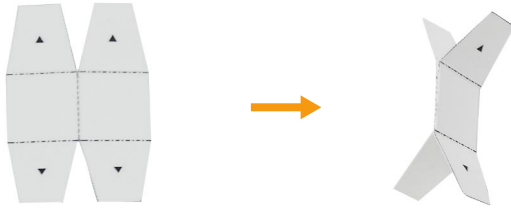
- 24** Paste the object into the bird's beak.



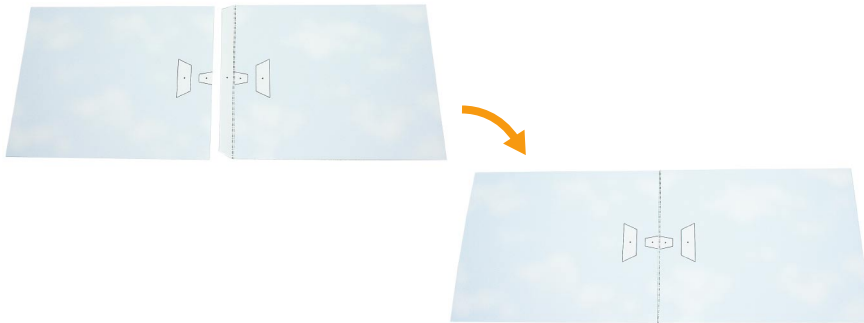
Canon Pop-up Card (Birdcage) : Assembly Instructions

Canon® is a registered trademark of Canon Inc. © HIROKO

- 25** Fold support E along the center line and glue together on the inside.
(Be careful not to stick the glue tabs together.)



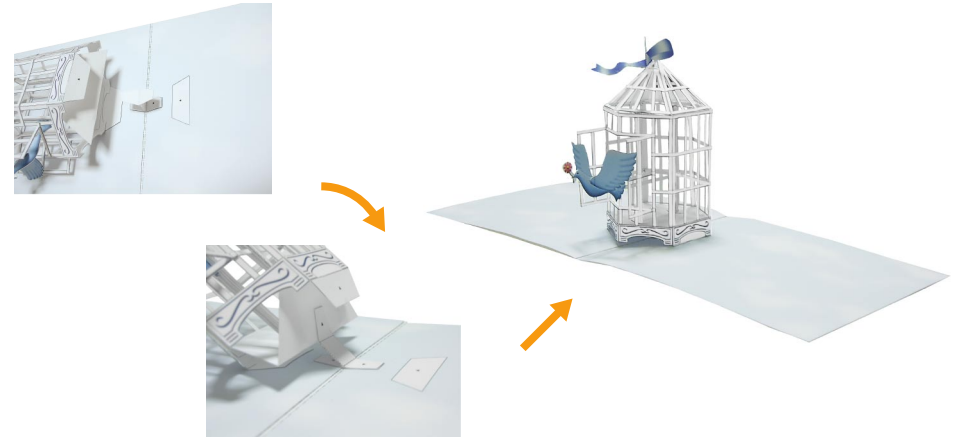
- 26** Stick the two sides of the backing sheet together.



- 27** Stick support E onto the glue spot in the center of the backing sheet.



- 28** Fold the birdcage and stick the birdcage glue spot onto the backing sheet glue spot. Then, stick on the center of the birdcage floor so that it enfolds support E. Finally, folding the backing sheet in the center, glue the rest of the birdcage glue spots to the corresponding glue spots on the backing sheet.



- 29** Stick on a colored paper cover onto half of the rear side of the base paper. Be careful to stick in on in the right direction.



- 30** Assembly Step 29 is the completed card when the cover is stuck on to the other half side.

