

Canon Pop-up Card (Cake) : Assembly Instructions

Canon® is a registered trademark of Canon Inc. © HIROKO



Assembly Instructions

..... **Mountain fold**(dotted line) ——— **Scissors line**(solid line)
*Make a mountain fold. *Cut along the line.

- - - - - **Valley fold**
(dashed and dotted line)
*Make a valley fold. ——— **Cut in line**(solid line)
*Make a cut.

▲ **Black triangle**
Glue here

△ **White triangle**
Glue the back



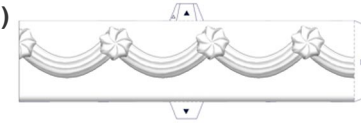
scissors, paste, a used ballpoint pen (tracing along the fold lines makes them easier to fold)



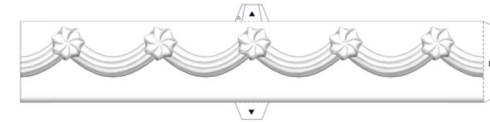
Caution: Glue, scissors, and other tools may be dangerous to young children so be sure to keep them out of the reach of young children.

1 Cut out the parts and crease them along the fold lines indicated.

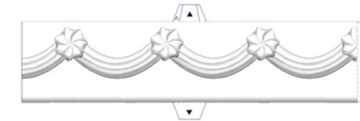
● **Part A (Right)**



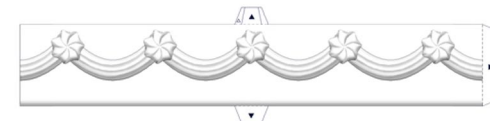
● **Part B (Right)**



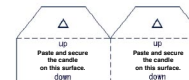
● **Part A (Left)**



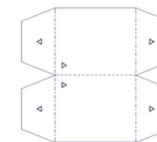
● **Part B (Left)**



● **Support C**



● **Support D**



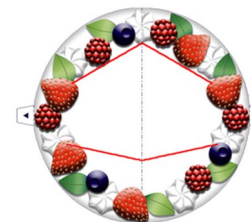
● **Support E**



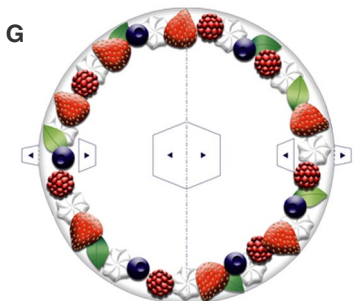
● **Message Plate**



● **Part F**



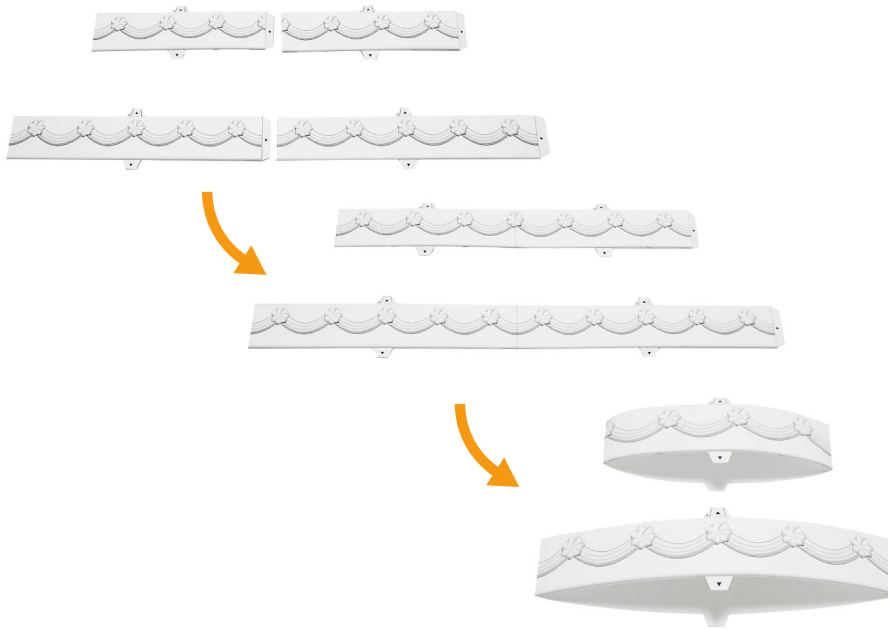
● **Part G**



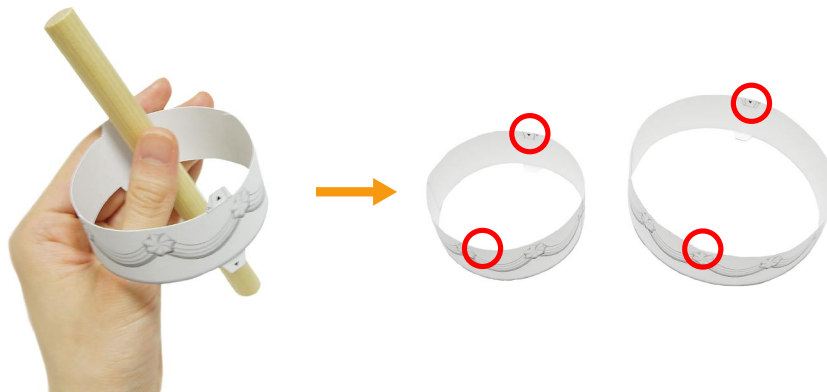
Canon Pop-up Card (Cake) : Assembly Instructions

Canon® is a registered trademark of Canon Inc. © HIROKO

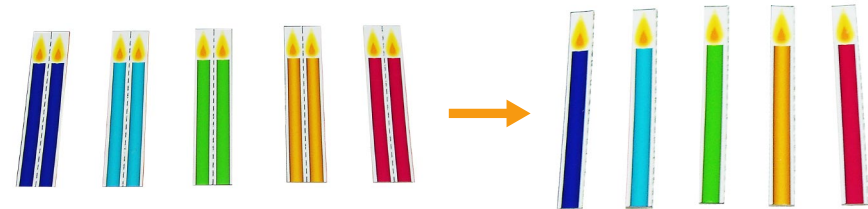
- 2** Attach the glue spots on the left and right sides of part A to form a ring. Do the same for part B.



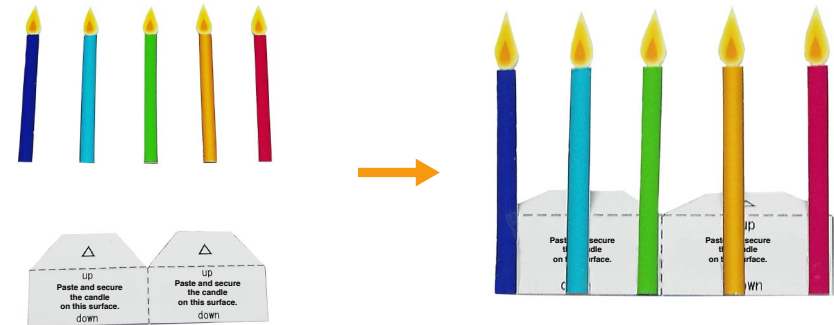
- 3** Use a pen or rod to add curves, and fold the top glue tab inside the ring and glue it to the inside.



- 4** Cut out candles of your choice, fold along the center line and glue together, then cut around the edges.



- 5** Attach the candles in line with the bottom edge of support C.



- 6** Fold part F along the center line, and cut slots along the red lines.



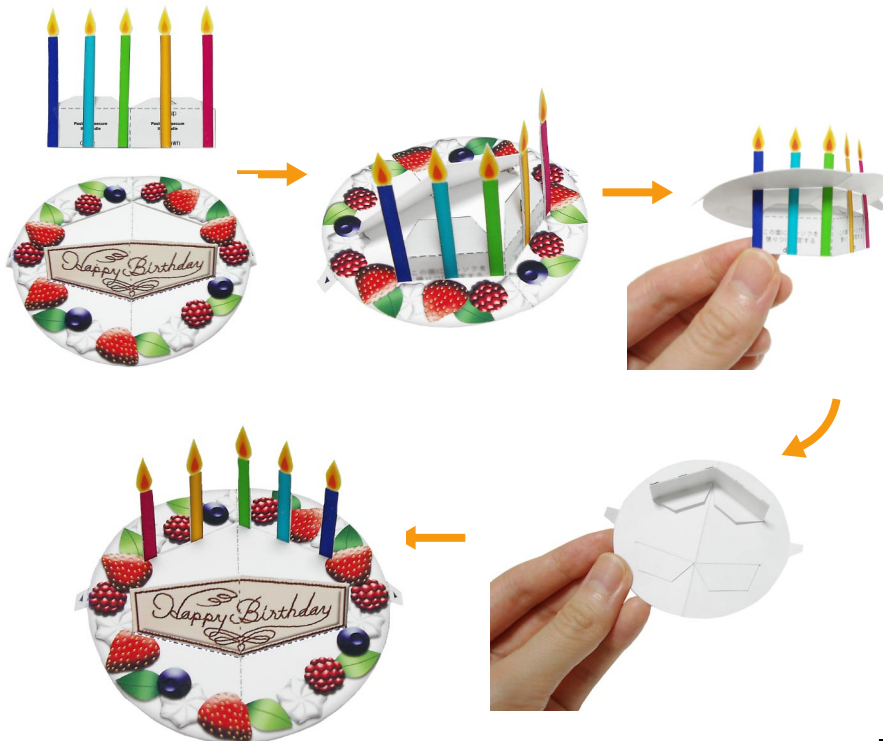
Canon Pop-up Card (Cake) : Assembly Instructions

Canon® is a registered trademark of Canon Inc. © HIROKO

- 7** Insert the glue tab on the message plate into the front slot on part F, and attach it underneath.



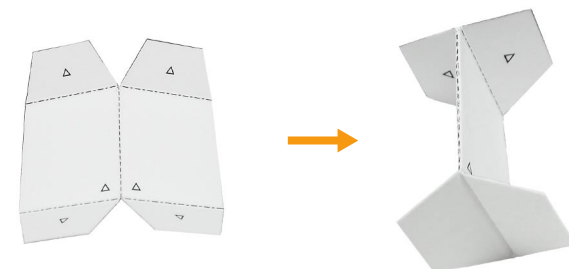
- 8** Insert 5 completely into the other slot you cut in step 6. Attach the glue tabs to the underside.



- 9** Attach the glue tabs on 8, one at a time, to part A.
* Fold the 8 to make the part A easier to stick on.



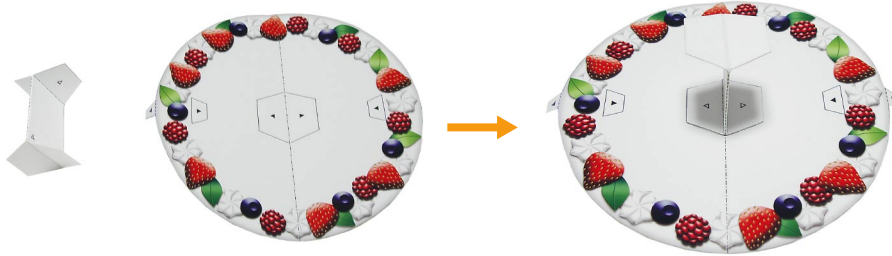
- 10** Fold support D along the center line and glue together on the inside.



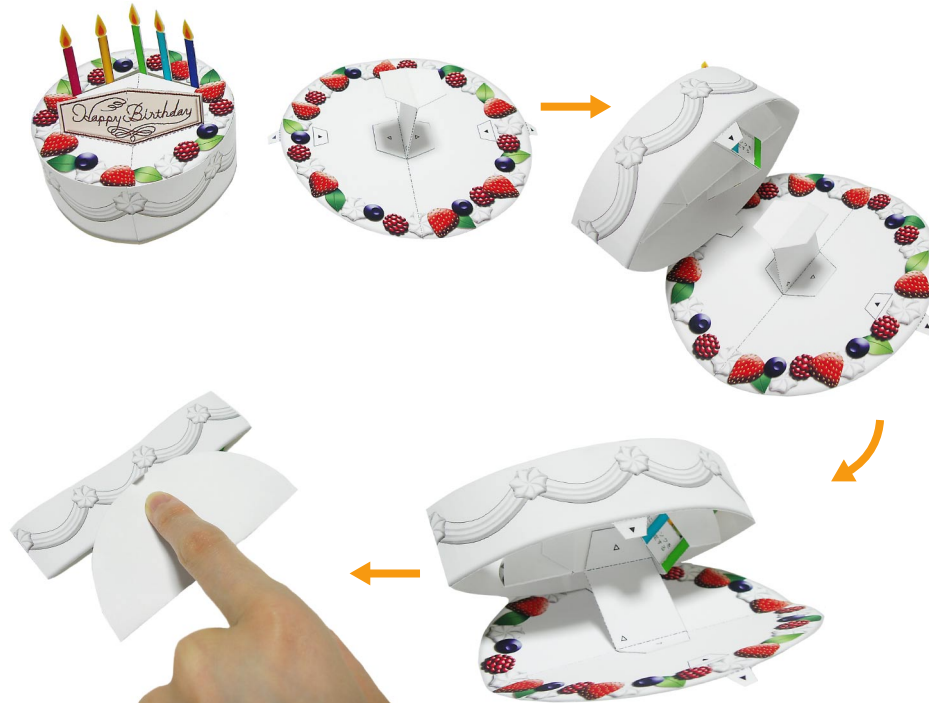
Canon Pop-up Card (Cake) : Assembly Instructions

Canon® is a registered trademark of Canon Inc. © HIROKO

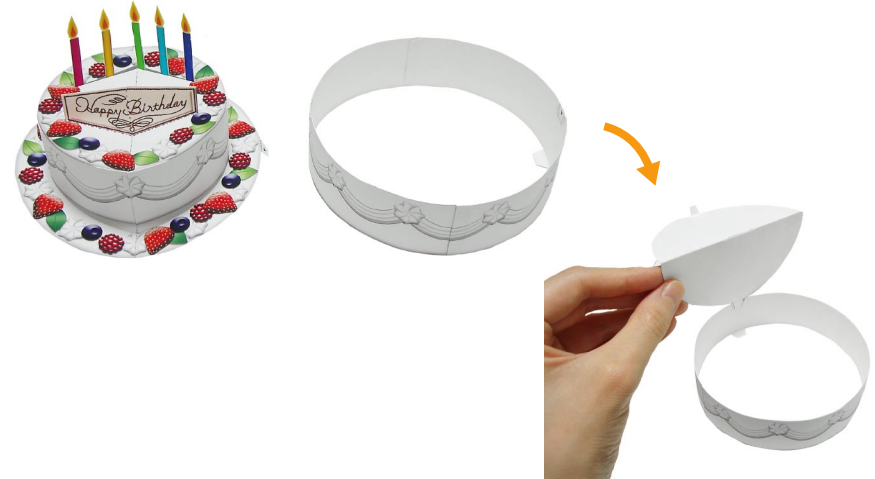
- 11** Stick support D onto the glue spot in the center of part G.



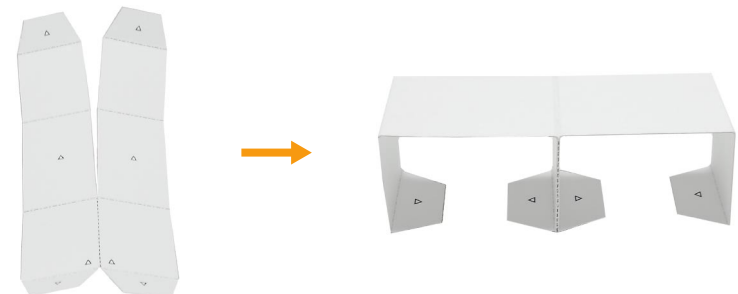
- 12** Attach one of the glue tabs on 9 to 11, then glue support D to the underside of 9 by aligning the center of 9 with the center of support D's glue spot. Attach 9's other glue tab while folding the cake down.



- 13** Attach the glue tabs on 12, one at a time, to the glue spots on part B.
* Fold the 12 to make the part B easier to stick on.



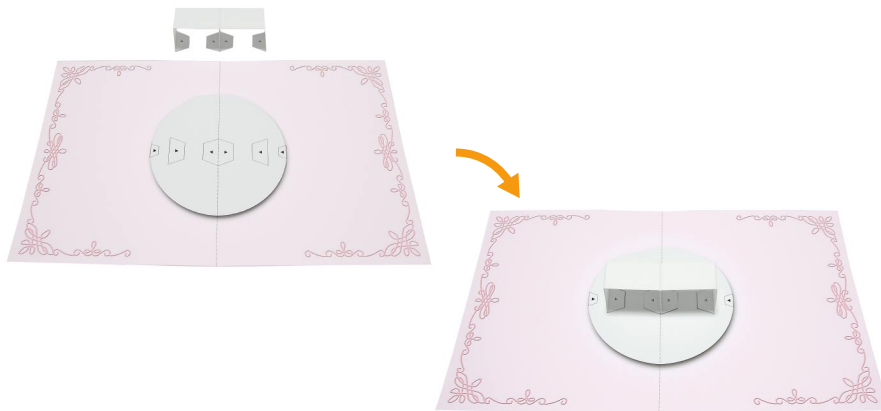
- 14** Fold support E along the center line and glue together on the inside.



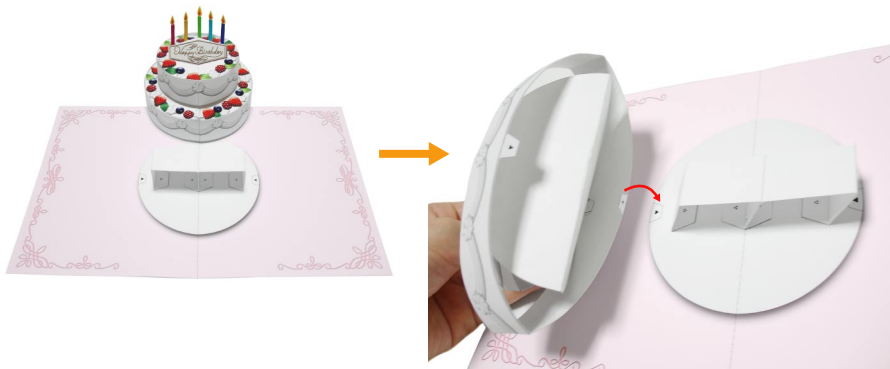
Canon Pop-up Card (Cake) : Assembly Instructions

Canon® is a registered trademark of Canon Inc. © HIROKO

15 Stick support E onto the glue spot in the center of the base paper.



16 Attach one of the glue tabs on 13 to the place indicated on 15.



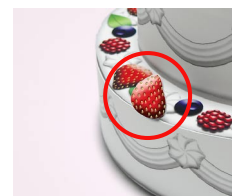
17 Insert the half of support E (indicated in red) underneath part G on 13 and press down on the top to glue together.



18 Attach the other half of support E (indicated in blue) to part G, and fold the base so you can glue the other glue tab on 16 to the base.



*Attach stickers to parts A and B (the sides of the cake) as you like.



[You can also decorate it like this.]



19 Stick on a colored paper cover onto half of the rear side of the base paper. Be careful to stick in on in the right direction.



20 19 is the completed card when the cover is stuck on to the other half side.

