

Canon Pop-up Card (Cake) : Pattern

Canon® is a registered trademark of Canon Inc. © HIROKO



<http://www.canon.com/c-park/en/>



Assembly Instructions

..... **Mountain fold**(dotted line) ——— **Scissors line**(solid line)
*Make a mountain fold. *Cut along the line.

- - - - - **Valley fold**
(dashed and dotted line)
*Make a valley fold.

— **Cut in line**(solid line)
*Make a cut.

▲ **Black triangle**
Glue here

△ **White triangle**
Glue the back

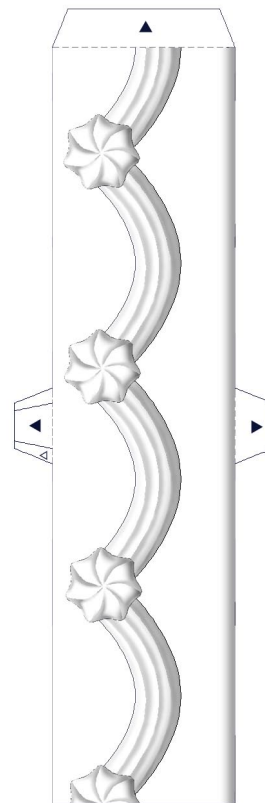


scissors, paste, a used ballpoint pen (tracing along the fold lines makes them easier to fold)



Caution: Glue, scissors, and other tools may be dangerous to young children so be sure to keep them out of the reach of young children.

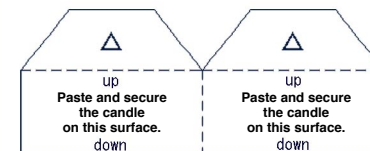
● Part A (Right)



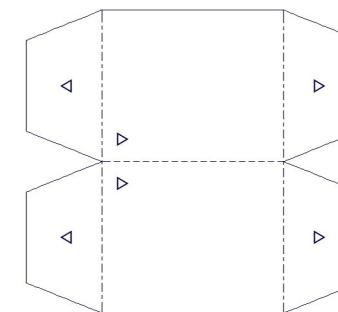
● Part A (Left)



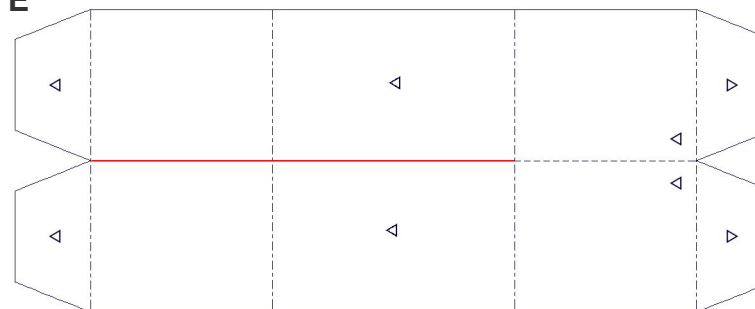
● Support C



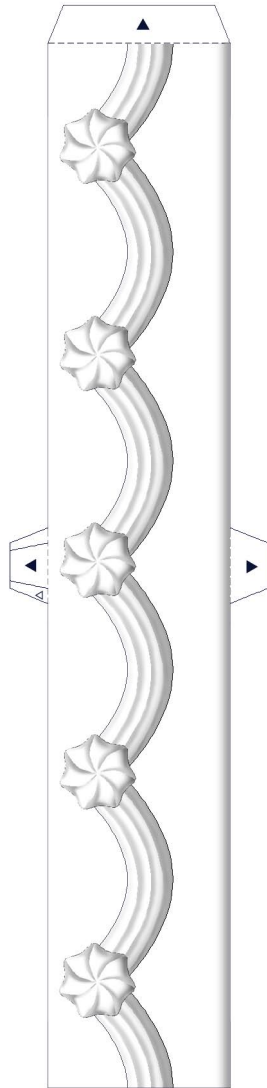
● Support D



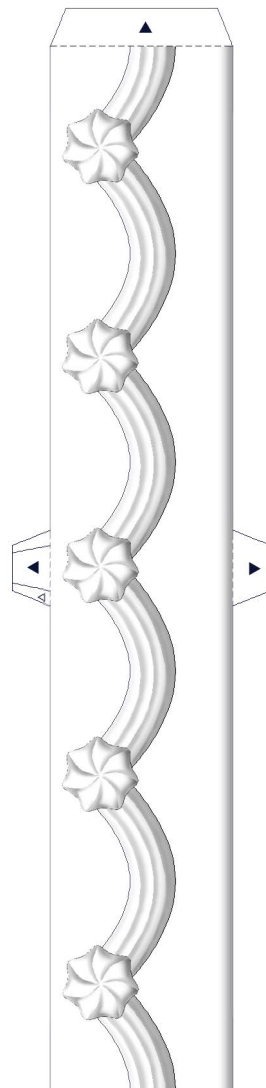
● Support E



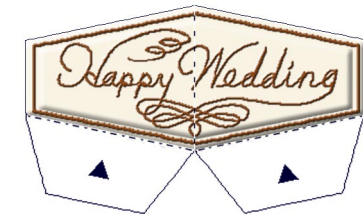
● Part B (Right)



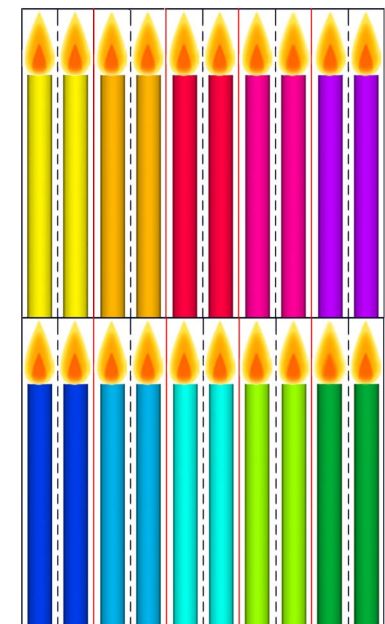
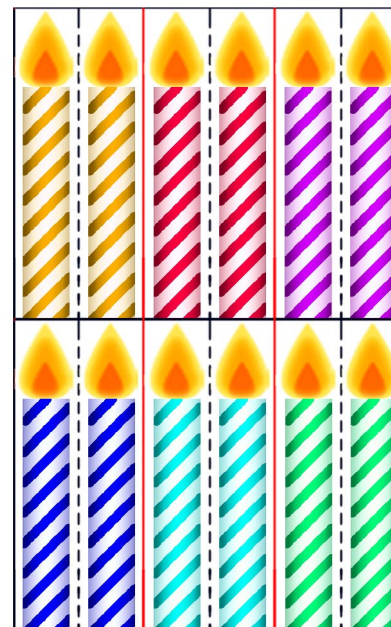
● Part B (Left)



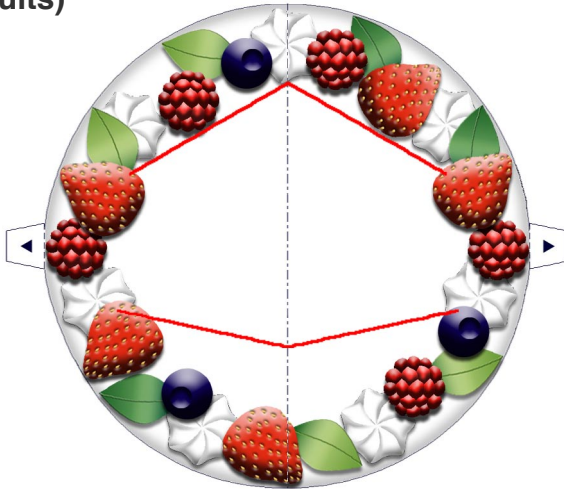
● Message Plates



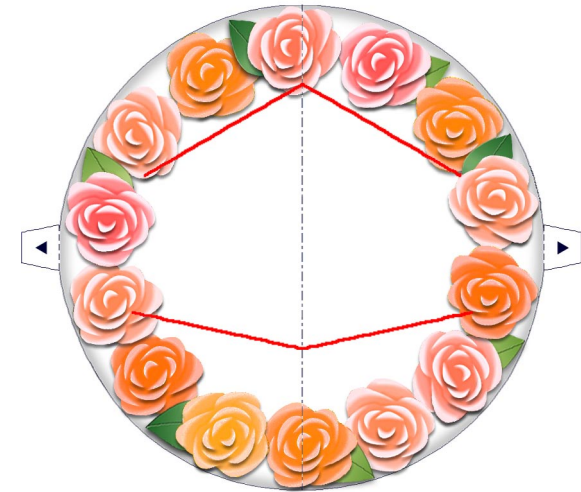
● Candles



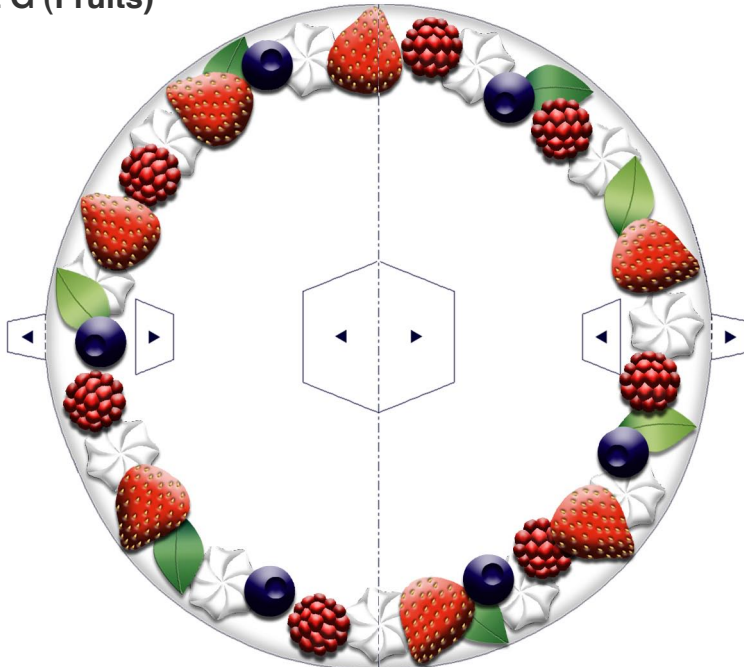
● Part F (Fruits)



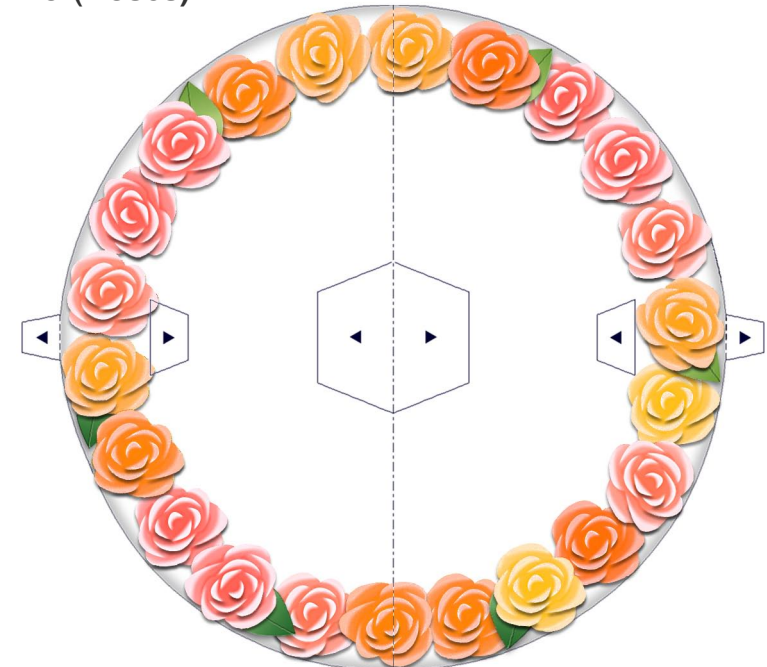
● Part G (Roses)



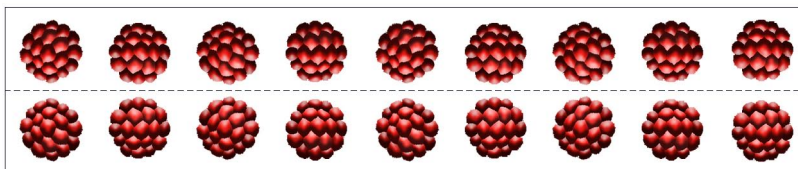
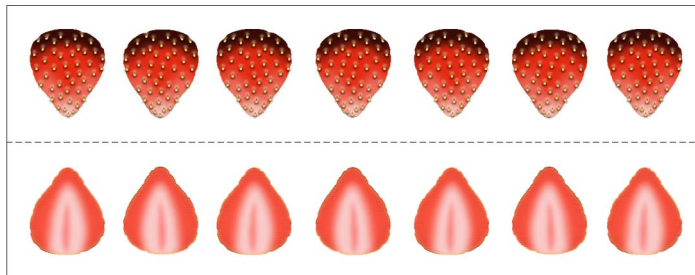
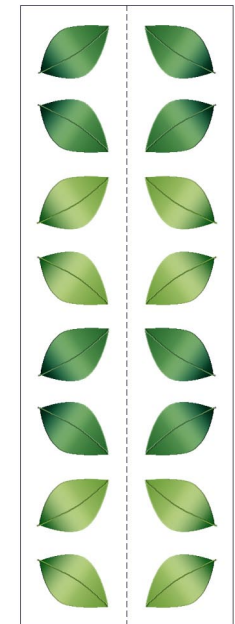
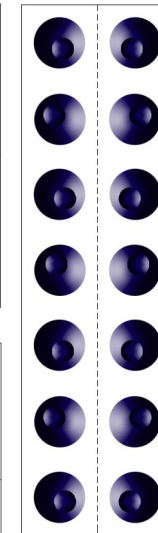
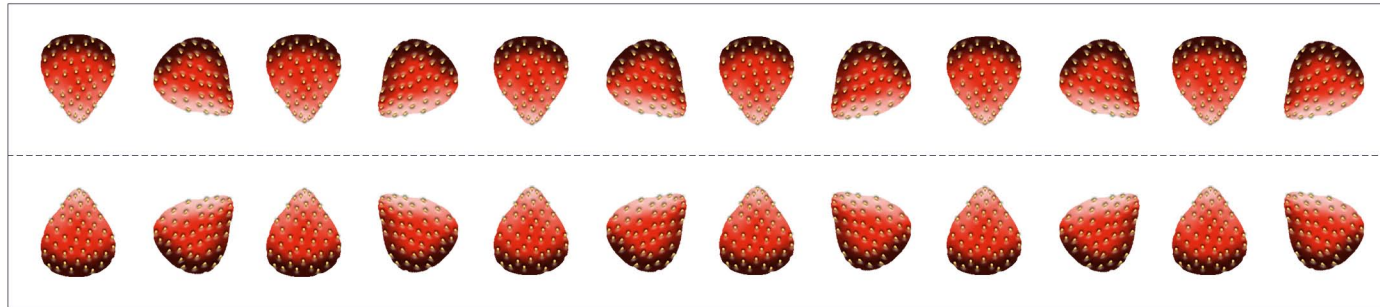
● Part G (Fruits)



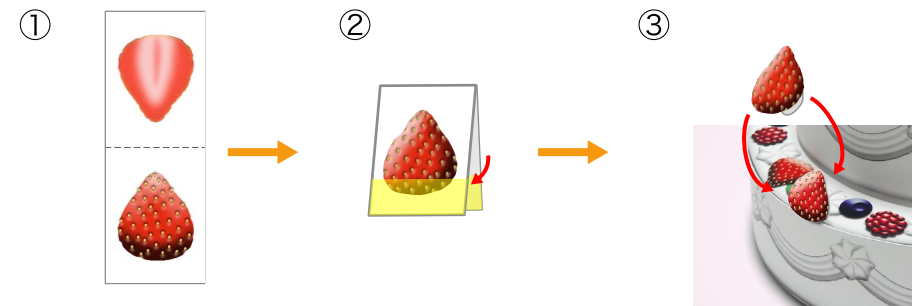
● Part G (Roses)



● Stickers



Sticker decoration sample.

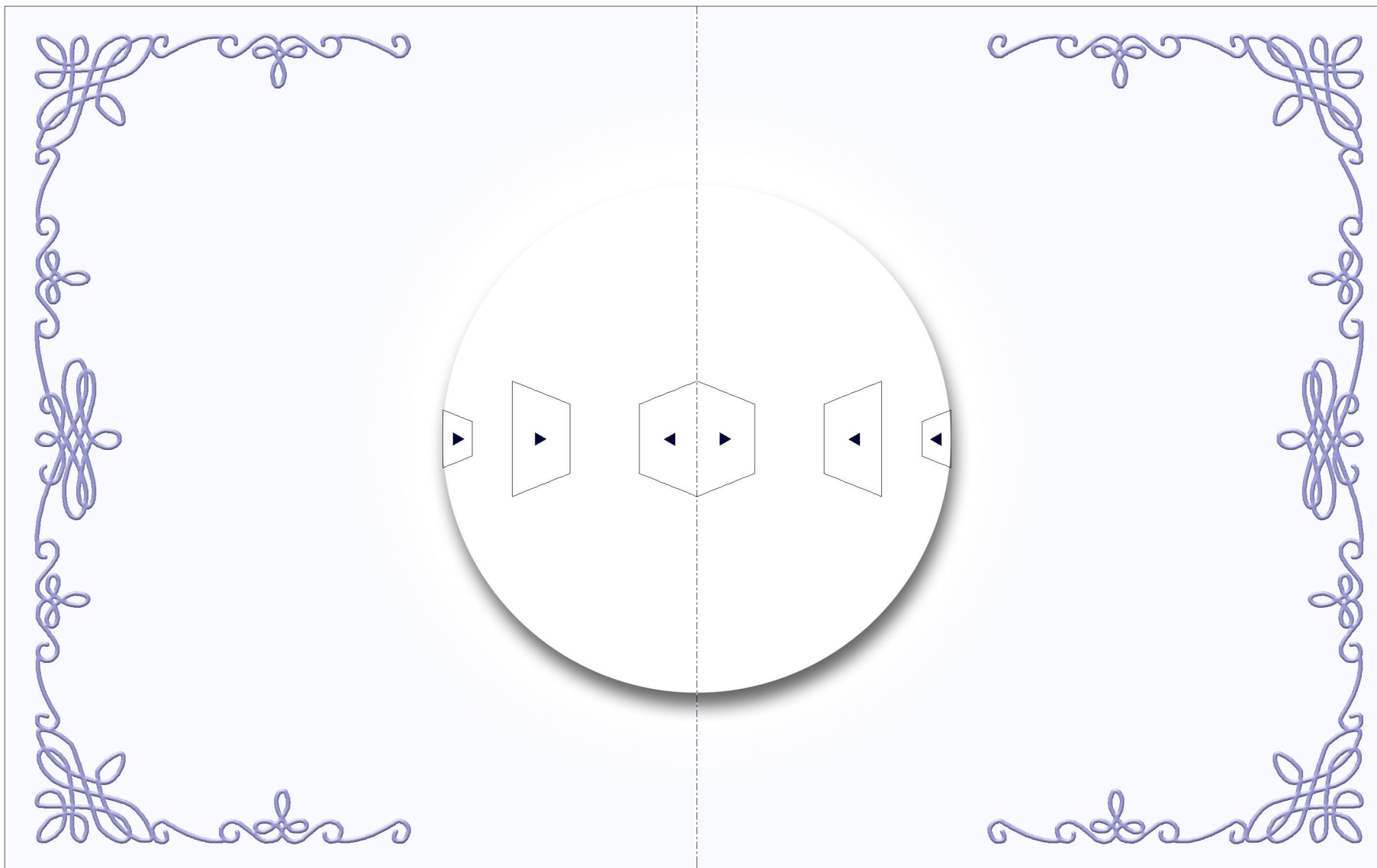


As shown in the picture, fold the decoration parts along with center line and glue together.

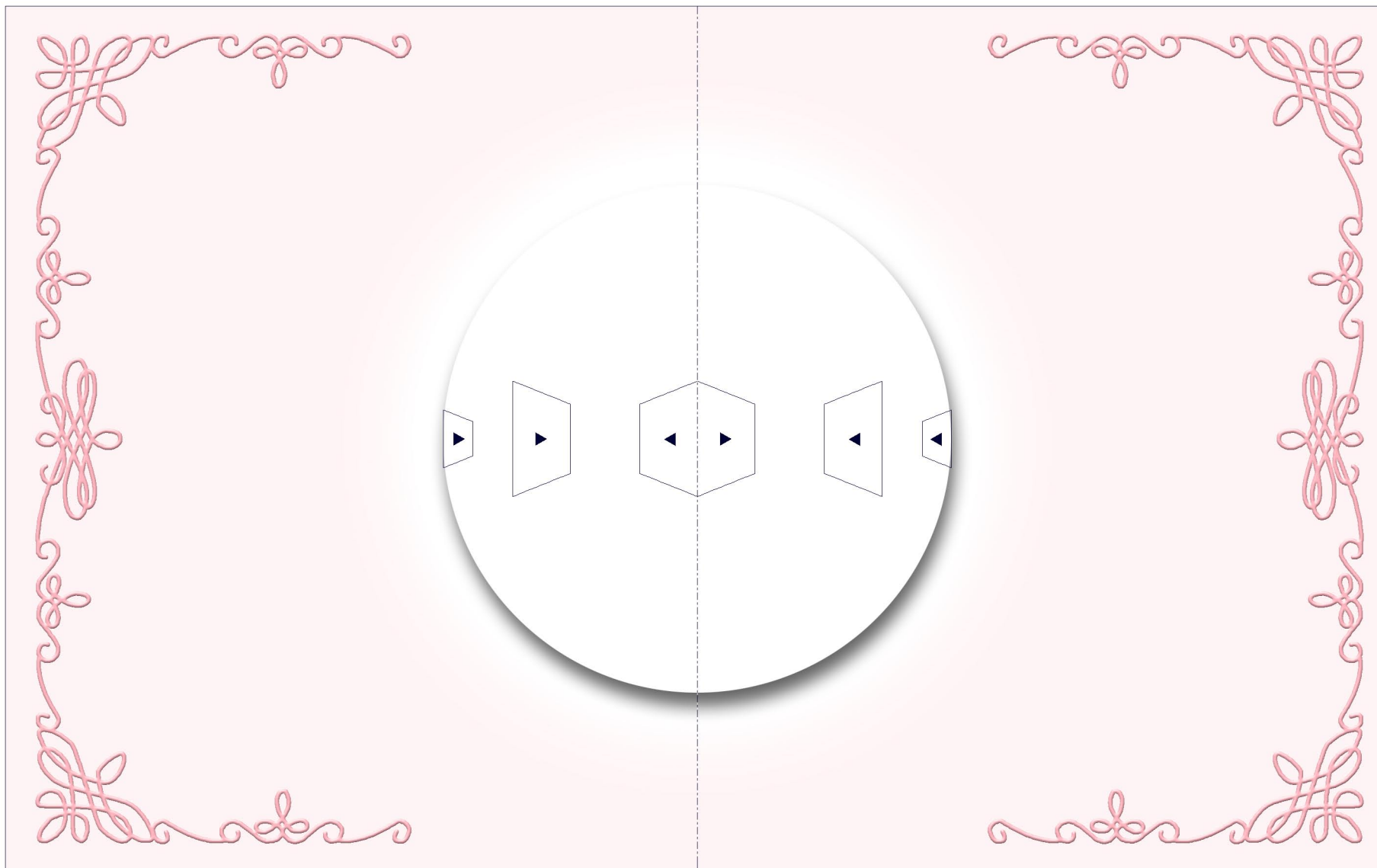
Take care not to attach the yellow parts together here.

After cutting them out along the lines, attach them so that they are inserted between the side and top of the cake.

● Base (Blue)



● Base (Red)



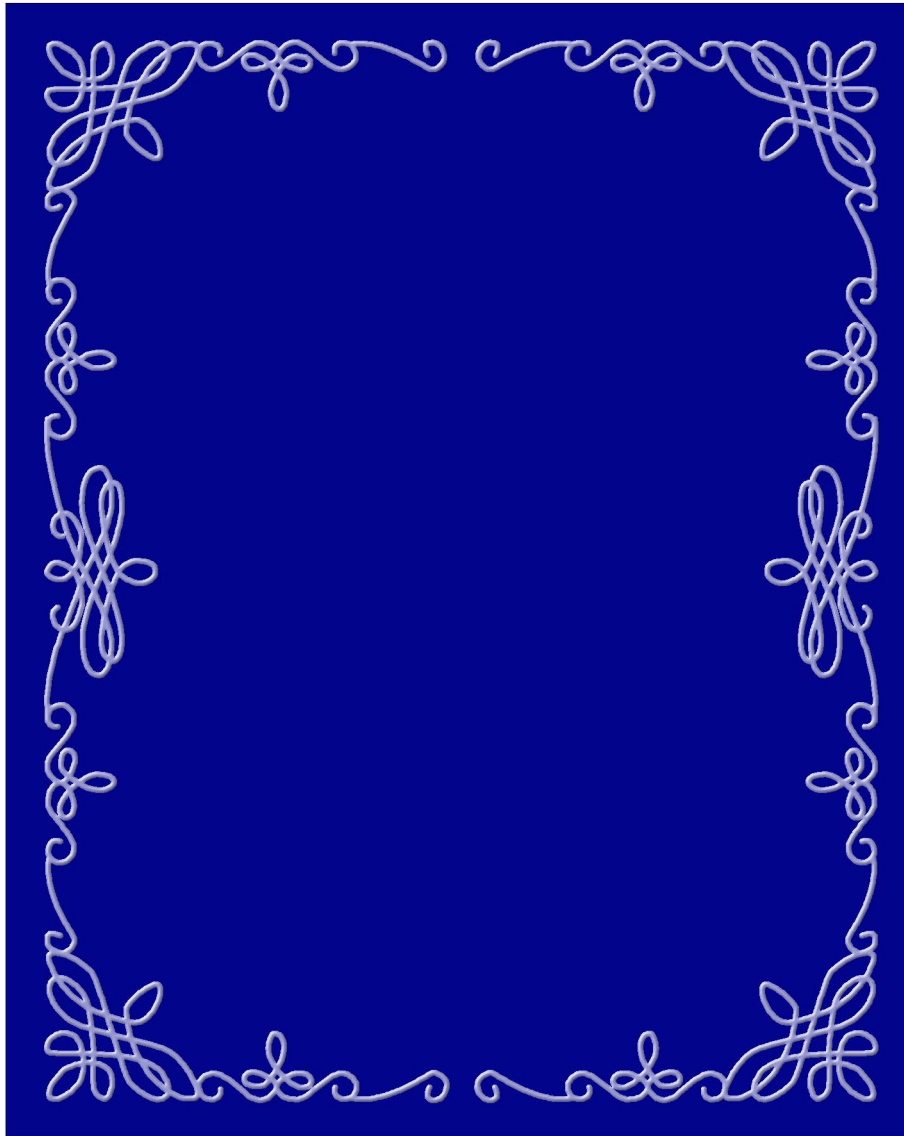
● Front cover (Happy wedding)



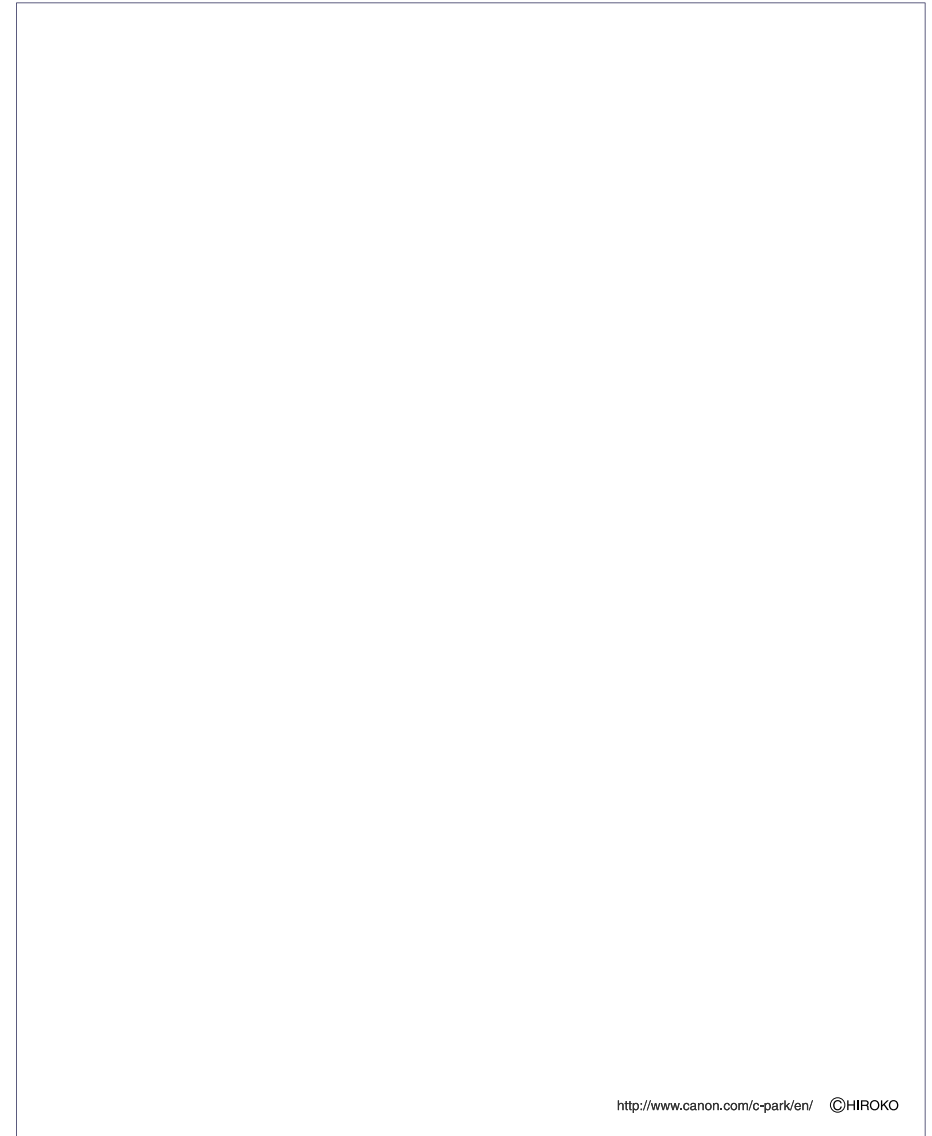
● Front cover (Happy birthday)



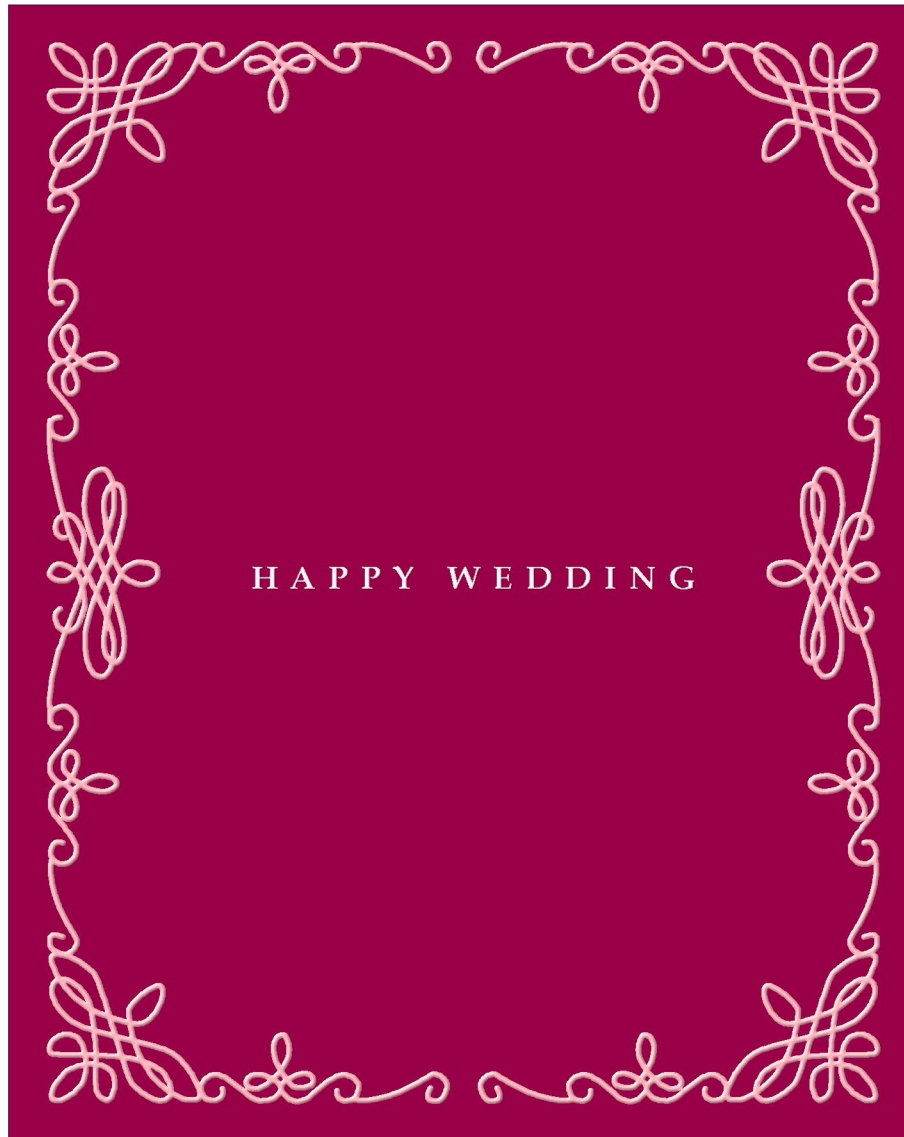
● Front cover (Plain)



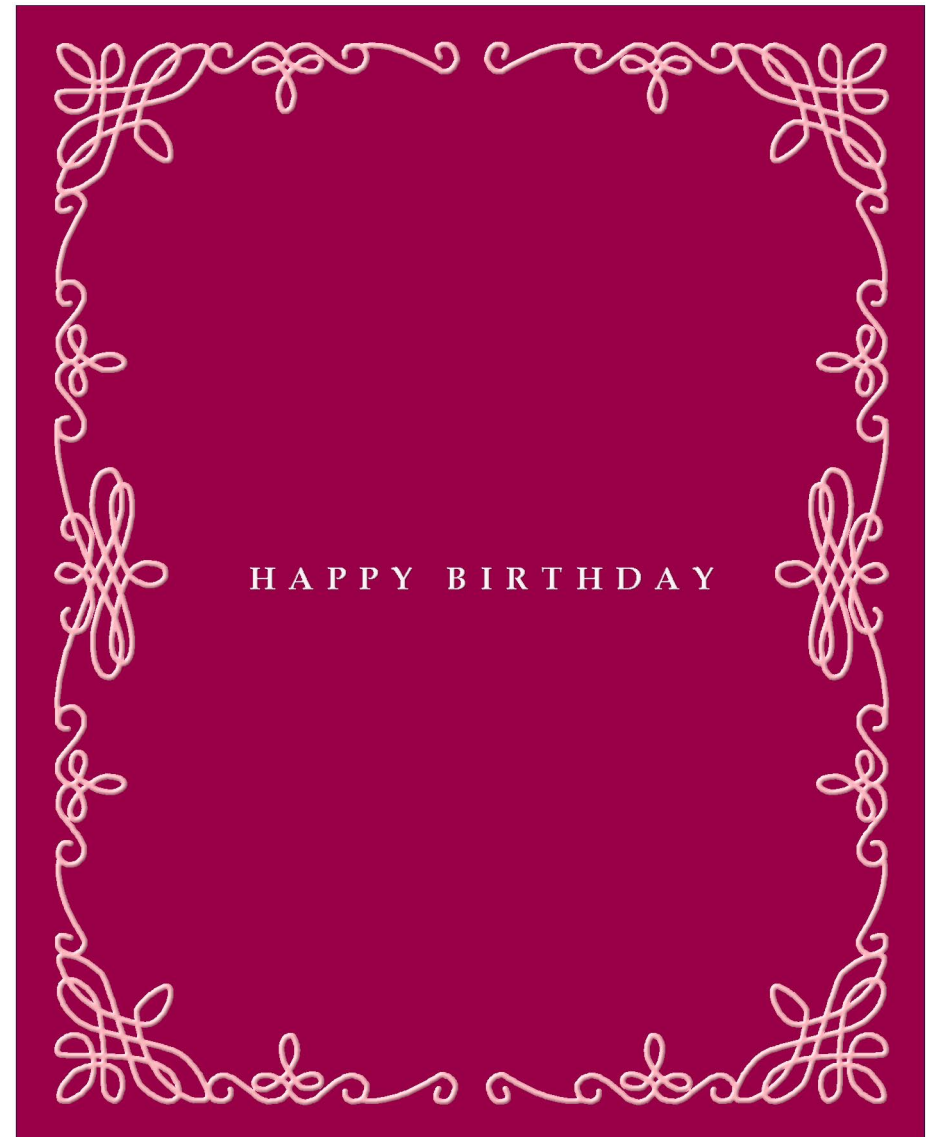
● Back cover



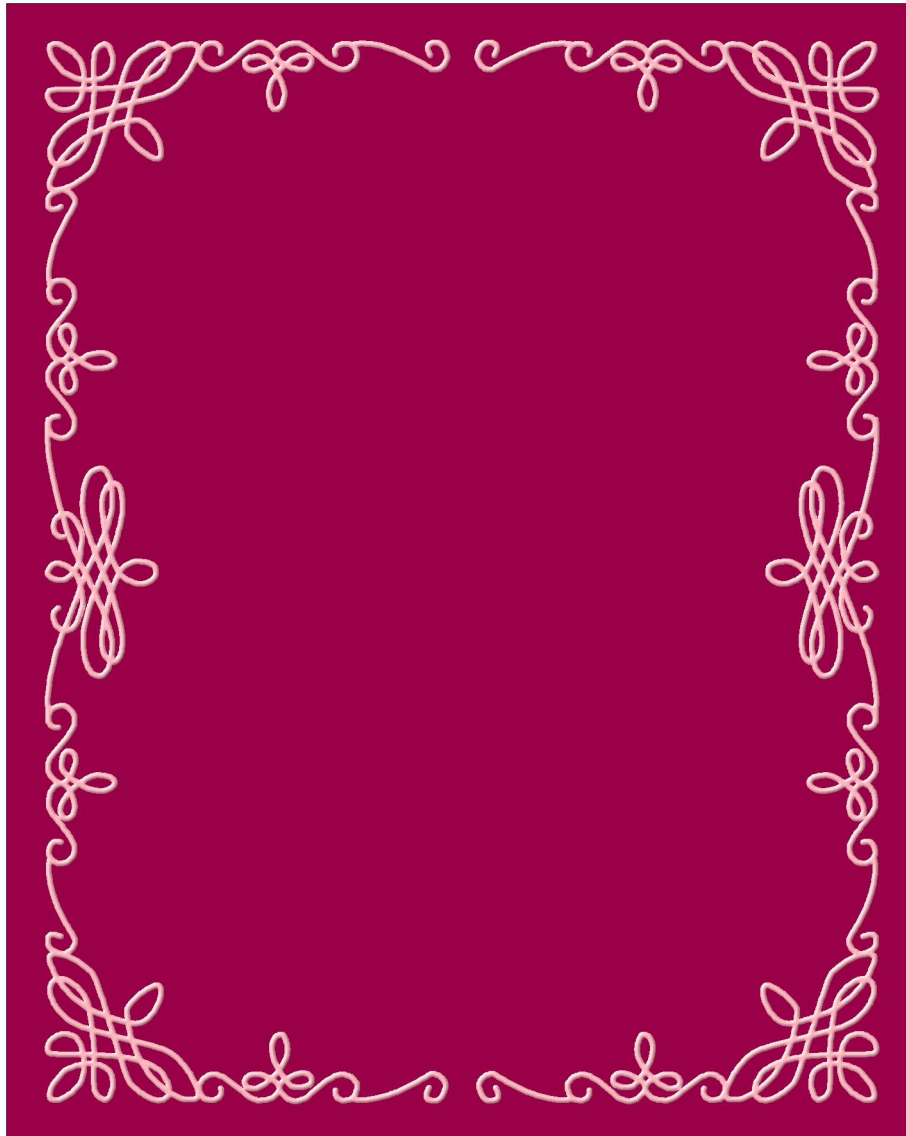
● Front cover (Happy wedding)



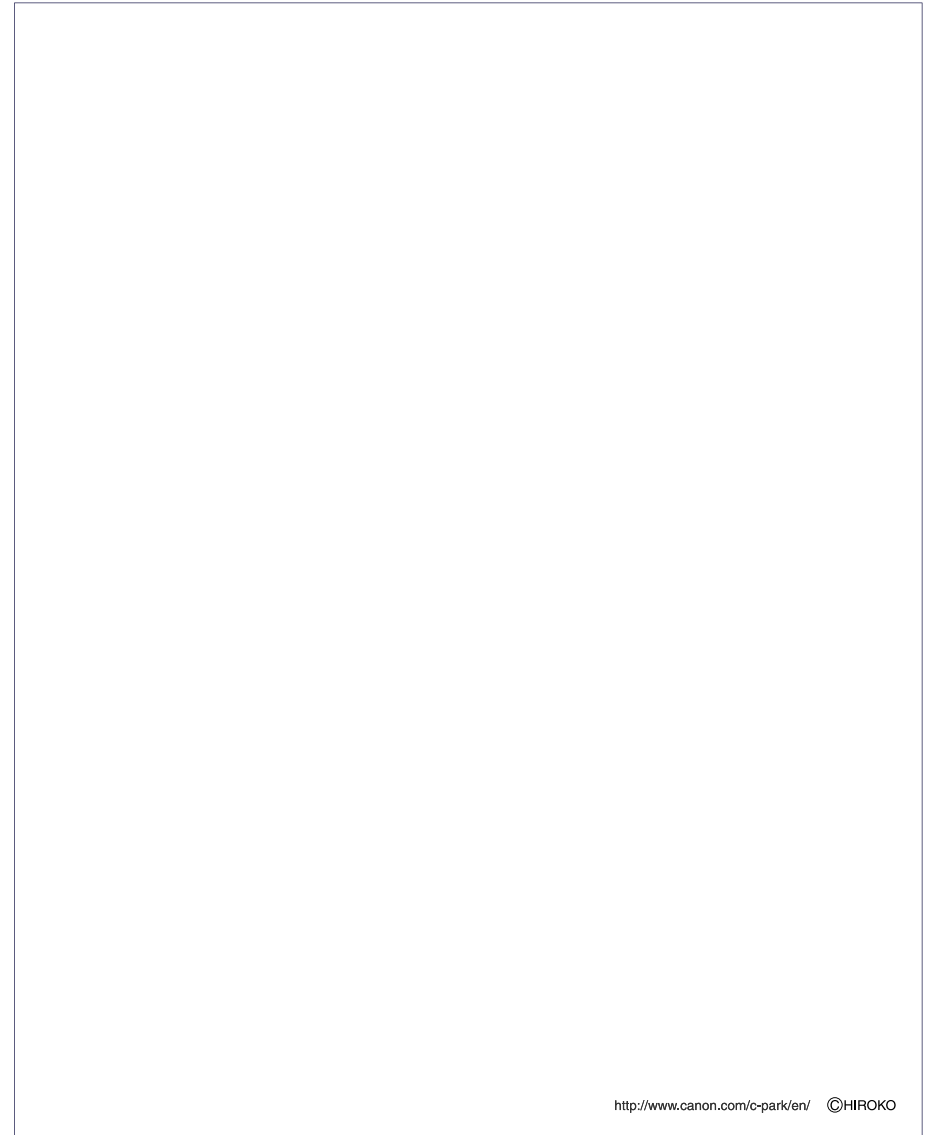
● Front cover (Happy birthday)



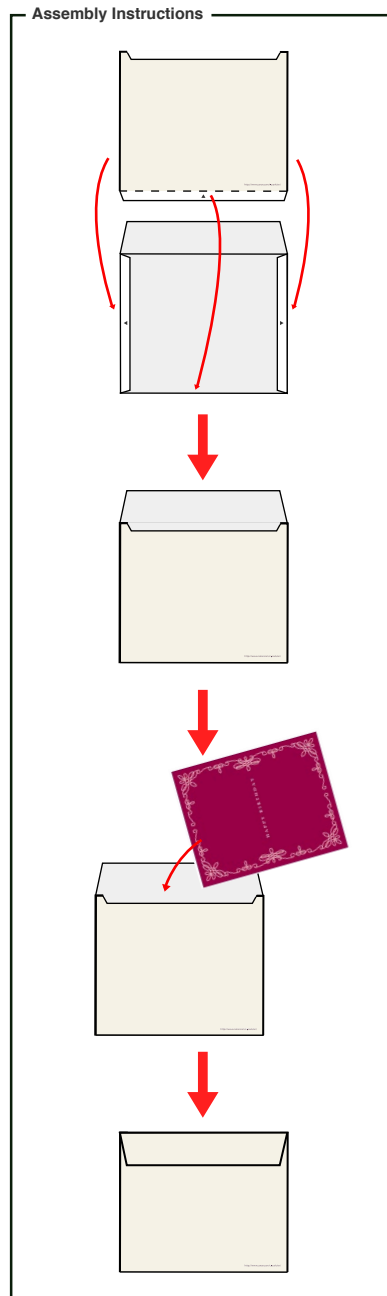
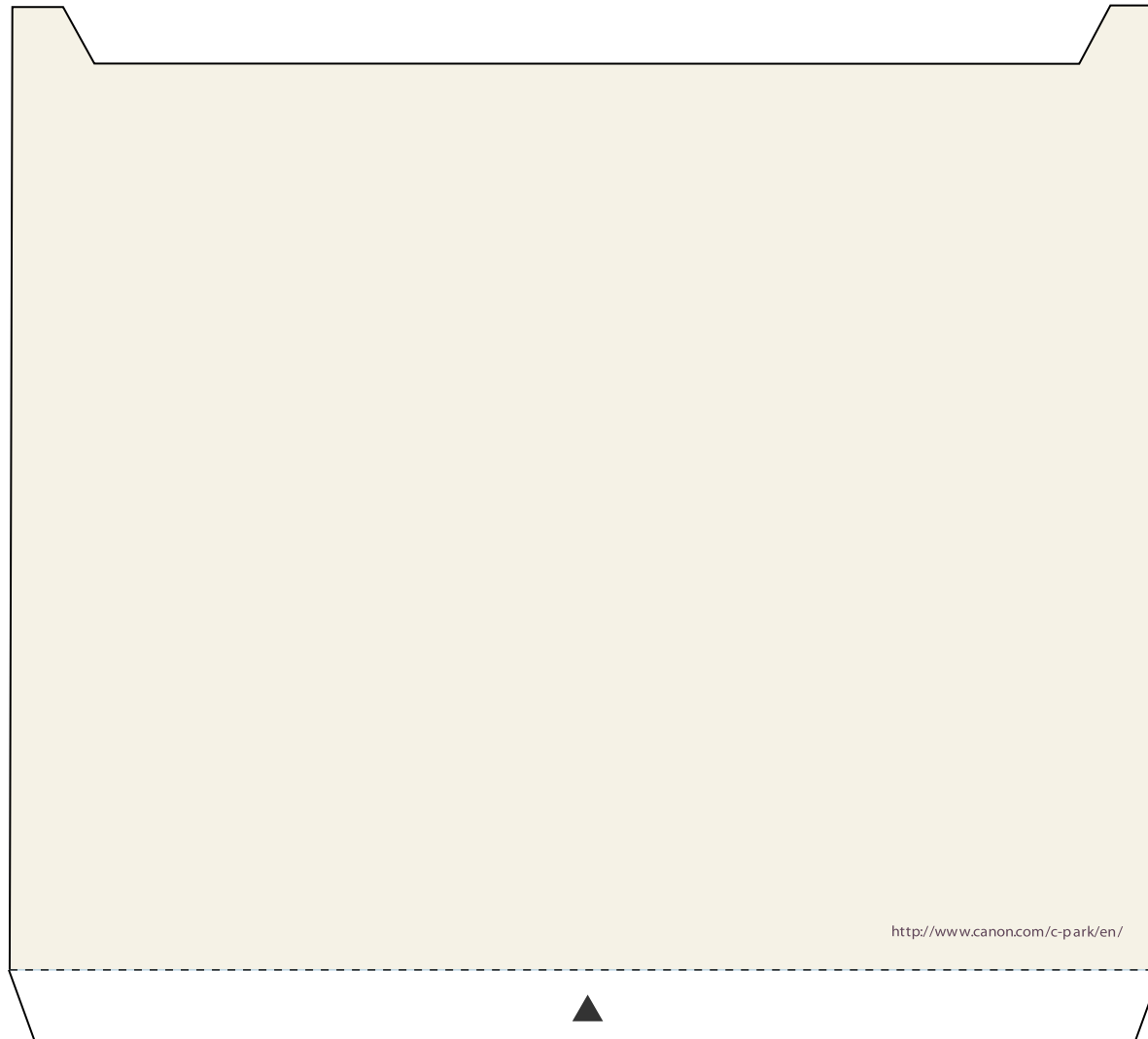
● Front cover (Plain)



● Back cover



● Envelope



● Envelope

