

NinjaToes

Lara Croft Extreme Depth Suit papercraft model



TOMB RAIDER CHRONICLES EXTREME DEPTH SUIT (EDS)

Finally, we can take Lara for a swim without fear of her drowning! Well, for a while, at least.

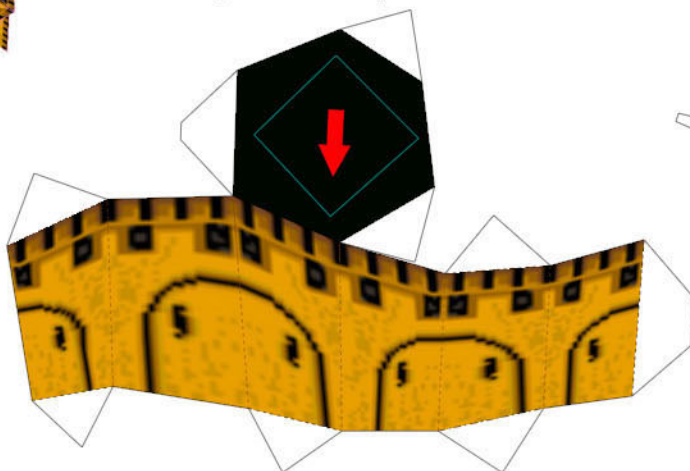
Lara stows away aboard a Russian submarine that's headed for the last known location of a World War II German U-boat, which was rumoured to be carrying the mythical Spear of Destiny.

But for reasons unknown, the U-boat never made it home, and now it lies at the bottom of the ocean... The extreme depths make it necessary for Lara to use a special suit, able to withstand the enormous pressures at that depth, as she attempts to retrieve the Spear of Destiny from its bowels...

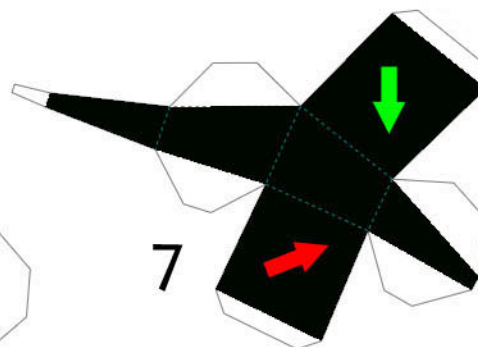
www.tombraider.com



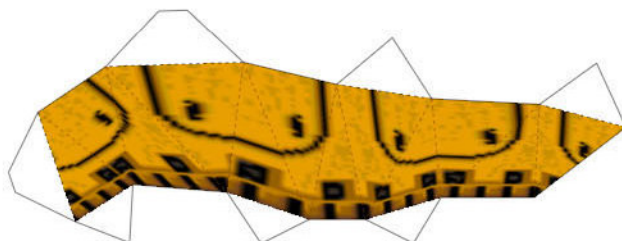
5



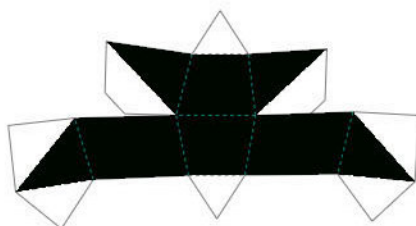
7



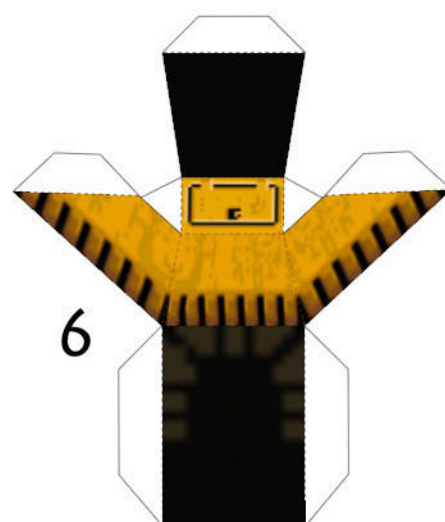
4



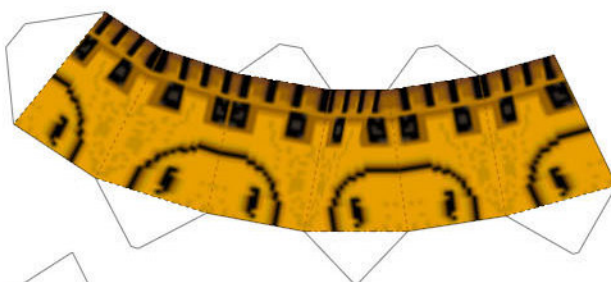
3



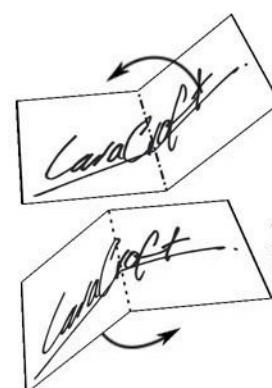
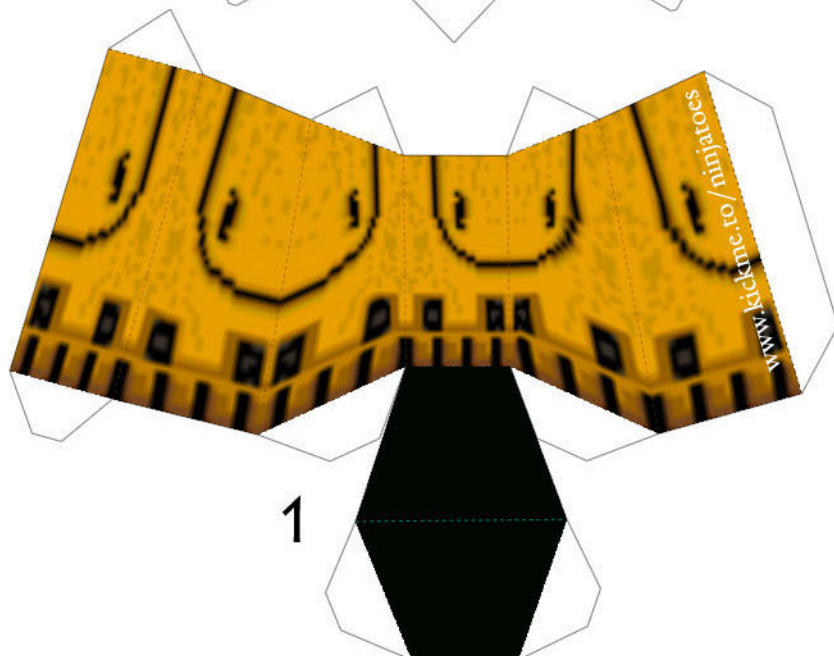
6



2

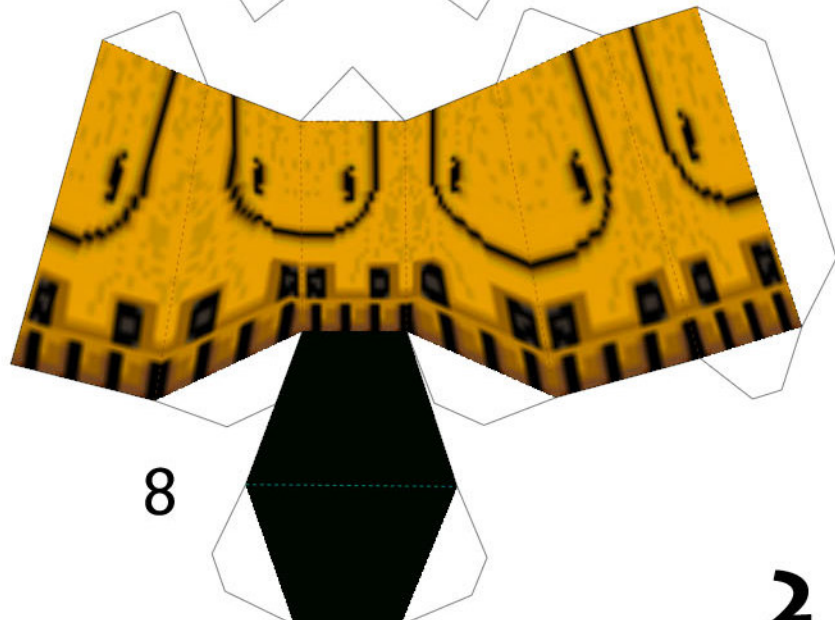
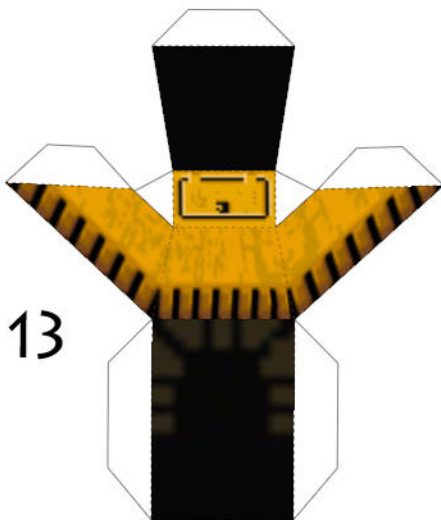
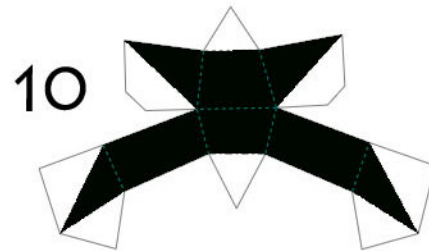
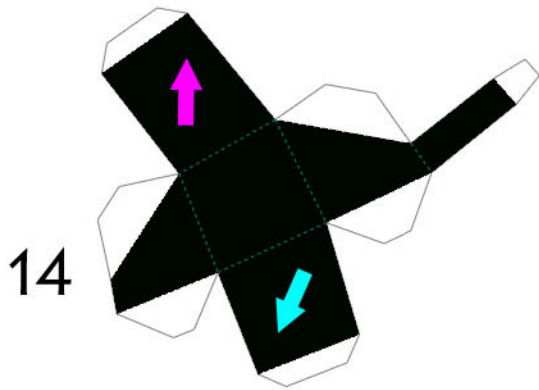
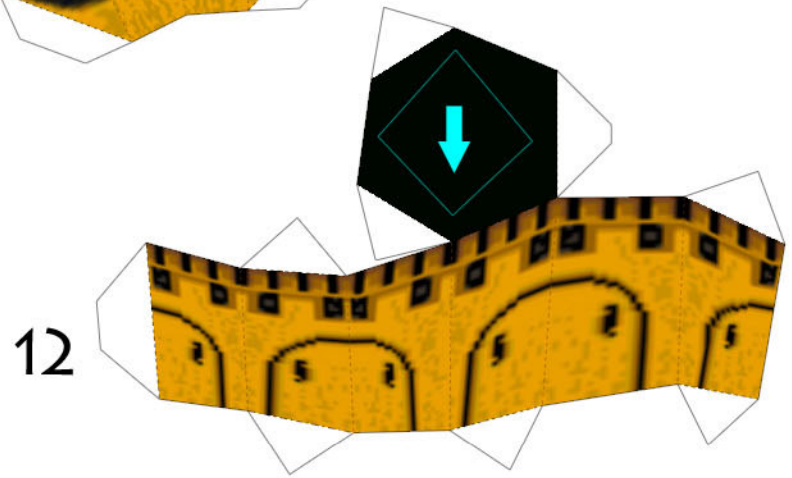
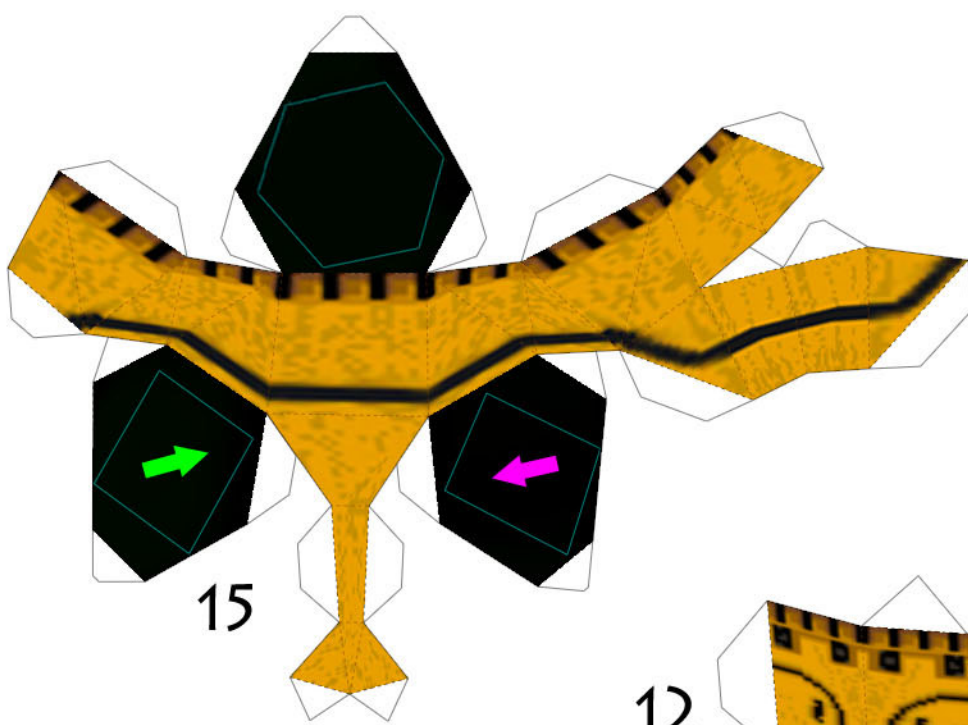


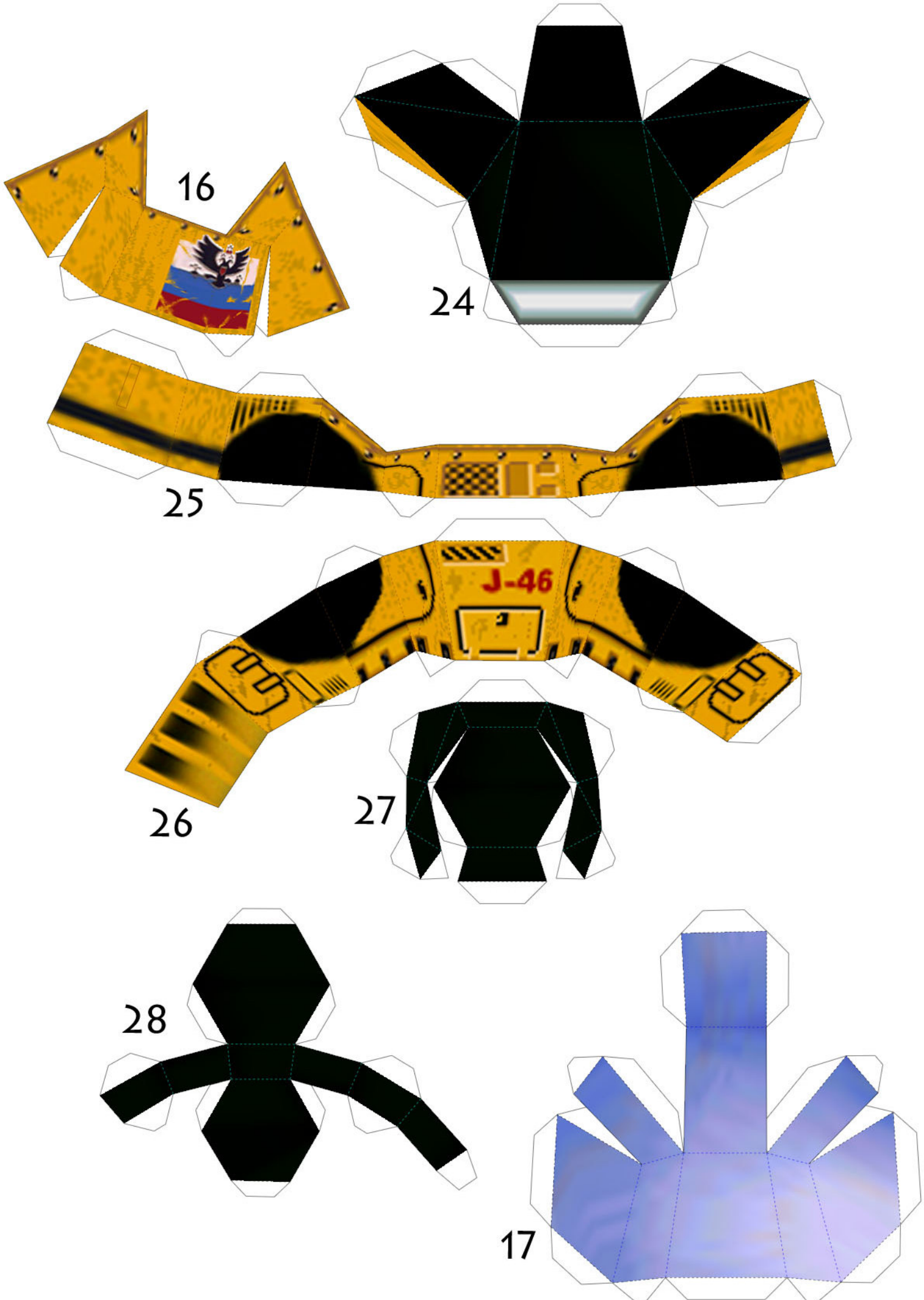
1



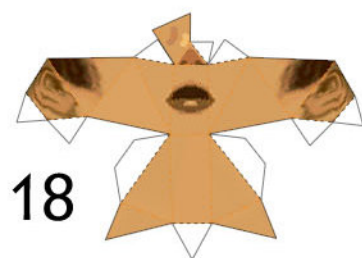
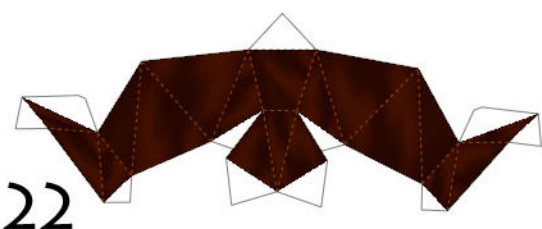
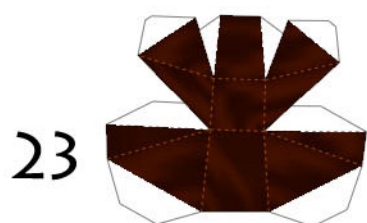
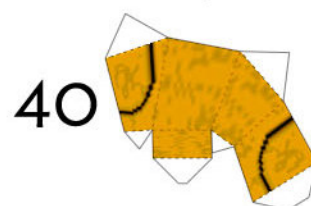
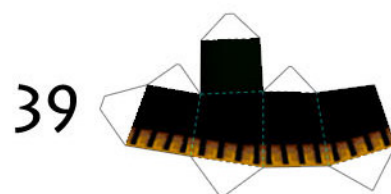
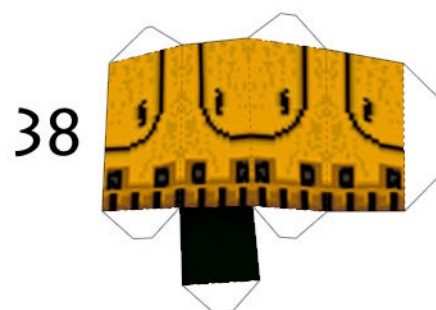
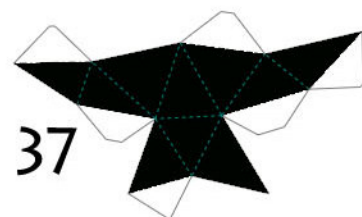
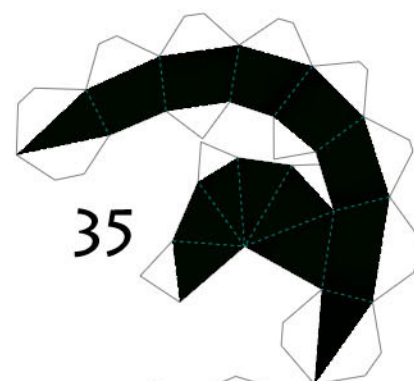
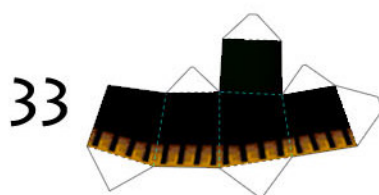
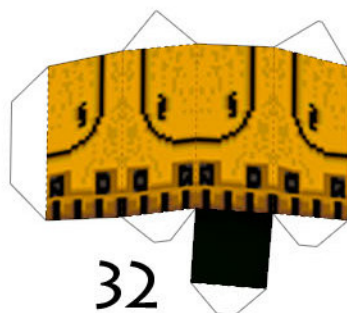
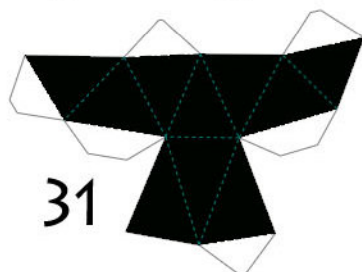
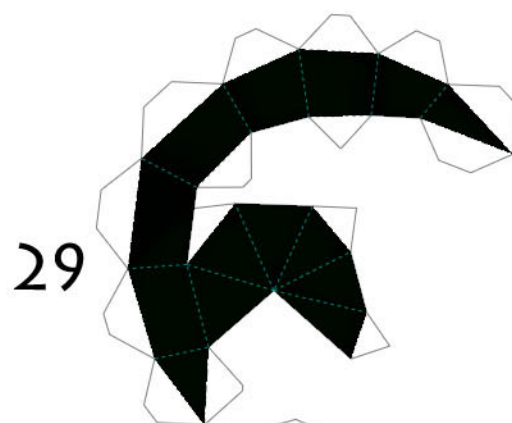
dot-dash lines:
fold up (valley fold)

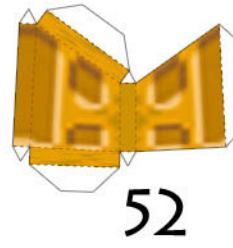
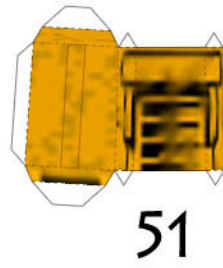
dashed lines:
fold down (mountain fold)



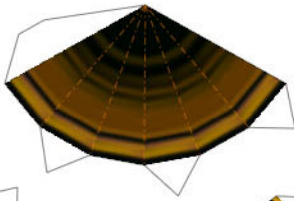


NOTE: you can choose to print part 17 as it is and not bother to build Lara's head and the inside of the suit, or you can choose to trace part 17 on a transparent sheet so you can see Lara's head inside the helmet once the model is finished.

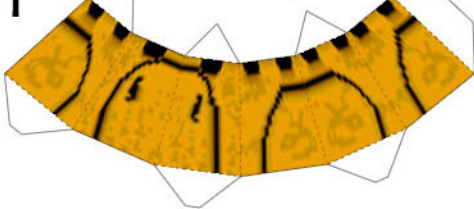




45



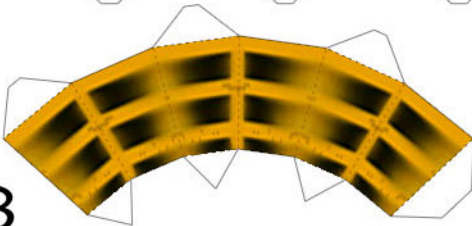
41



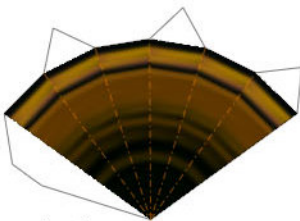
42



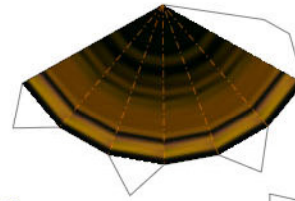
43



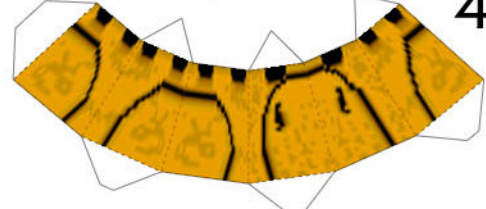
44



50



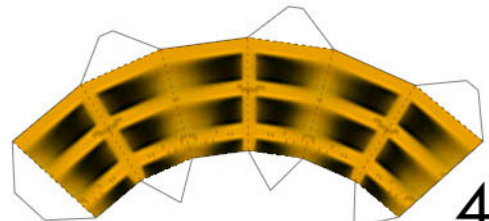
46



47



48



49

