

The Mk V heavy tank was developed from the MkIV heavy tank. The MkV closely resembled the MkIV outwardly. The most noticeable change was in the rear cupola.

More access hatches were added to the rear, including a rearward-firing MG, and a semaphore. The rails were installed at the factory instead of in the field. By the end of the war, many of the MkV's were "hermaphrodites", with one male sponson and one female sponson. I built the example model in this configuration. The model includes both male sponsons and both female sponsons. The MG's were usually Hotchkiss, but I included Lewis MG's also.

MkV's were sent to Russia to bolster the Tsarist (White) Army in it's losing struggle with the Bolsheviks (Red Army). Many of these vehicles were captured by the Soviets and used for a time after the end of the Revolution.

This model is of one of the tanks recovered by the Soviets. The colors and markings are based on the Armada #14 book. Note that these tanks seem to have not had unditching rails, perhaps because trenches were not as common during the Russian Revolution as they were on the Western Front.

I anglicize the motto on the front horns as "v' chem dyelo?", which I ask our Russian friends to translate for me.

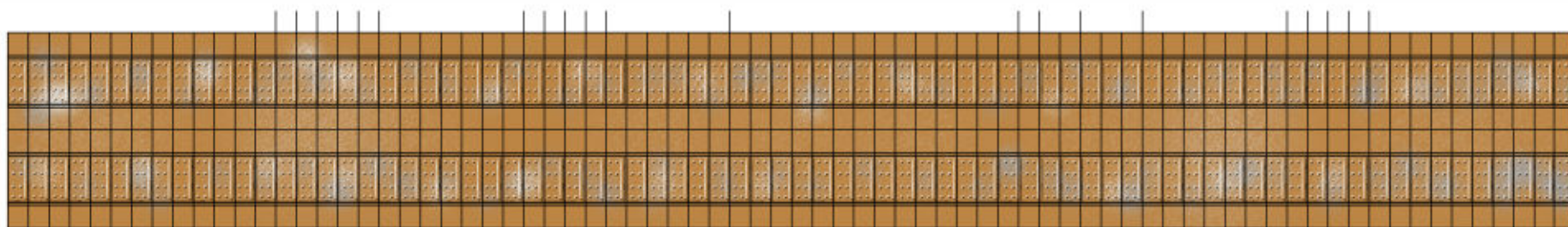
"V' Chem Dyelo?"

Mk V (Male)

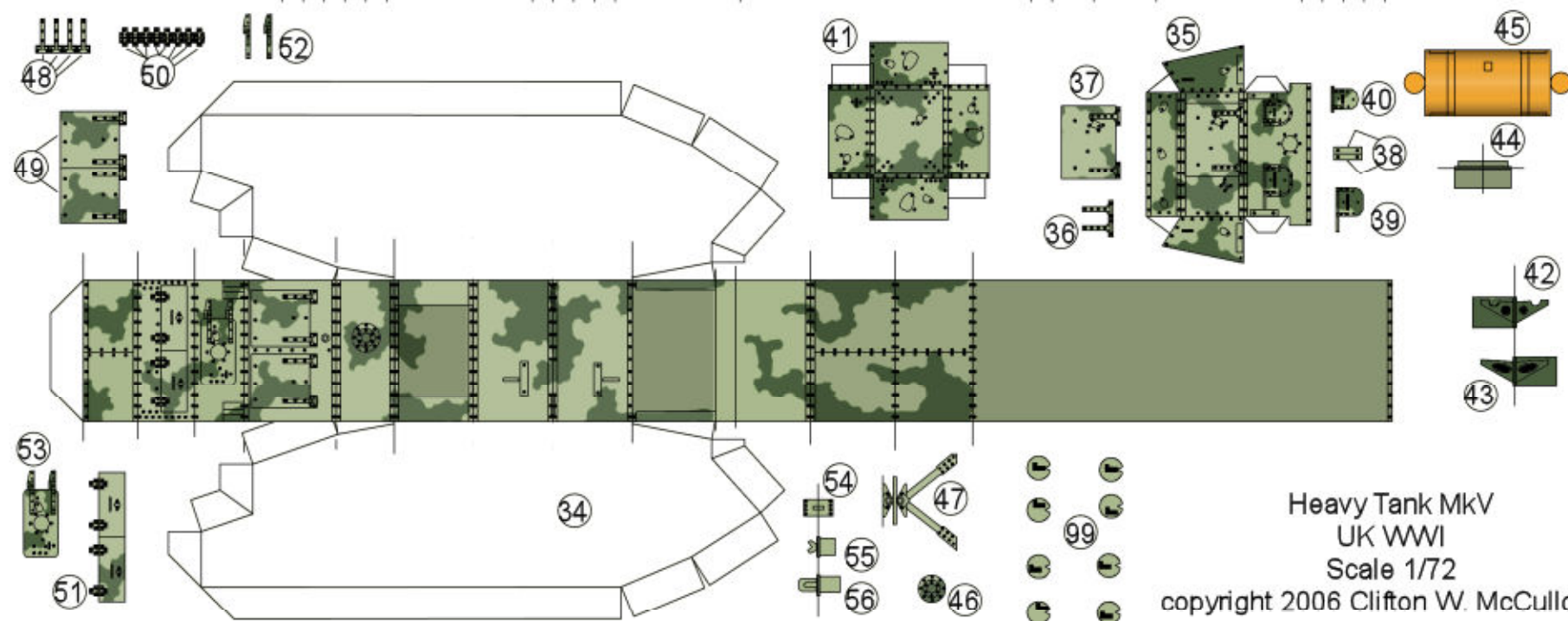
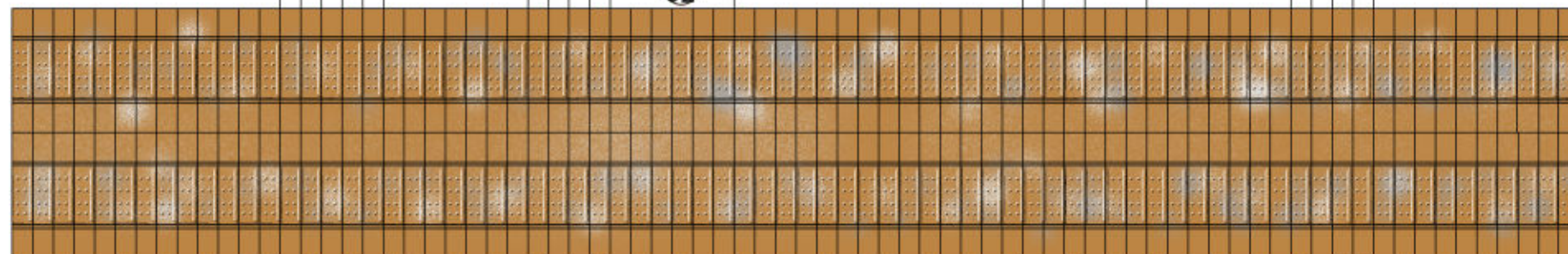
WWI British Heavy Tank
in Soviet 2nd Tank Unit,
11th (Caucasus) Army, 1921

1/72 Scale

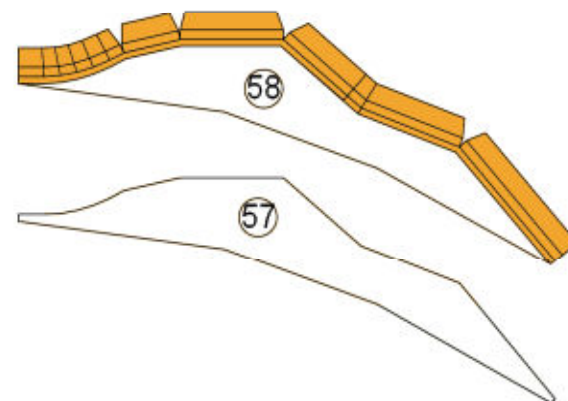
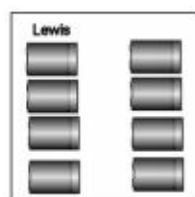
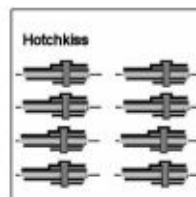
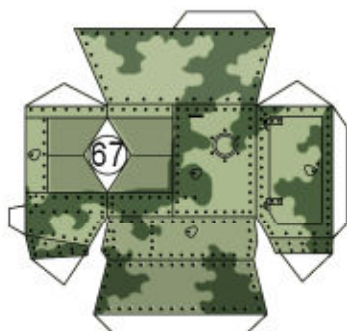
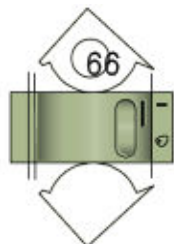
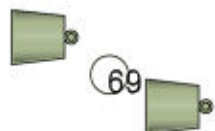
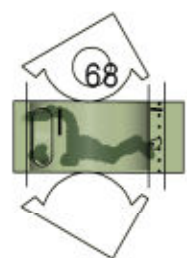
copyright 2006 Clifton W. McCullough



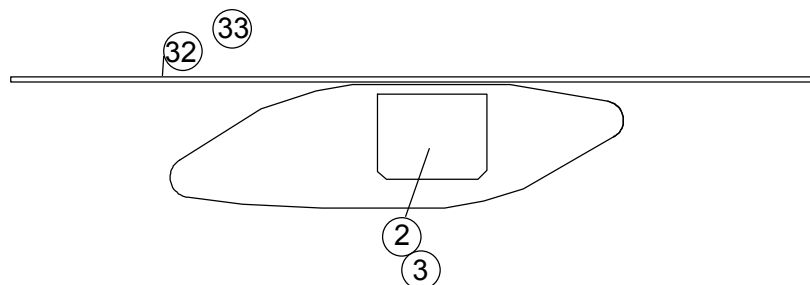
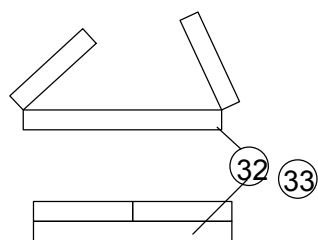
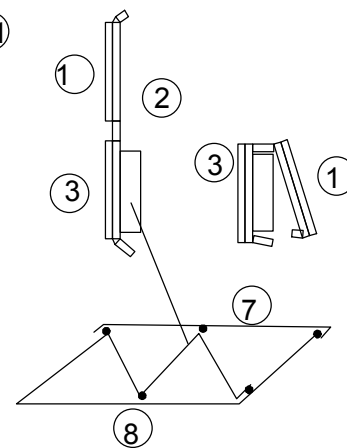
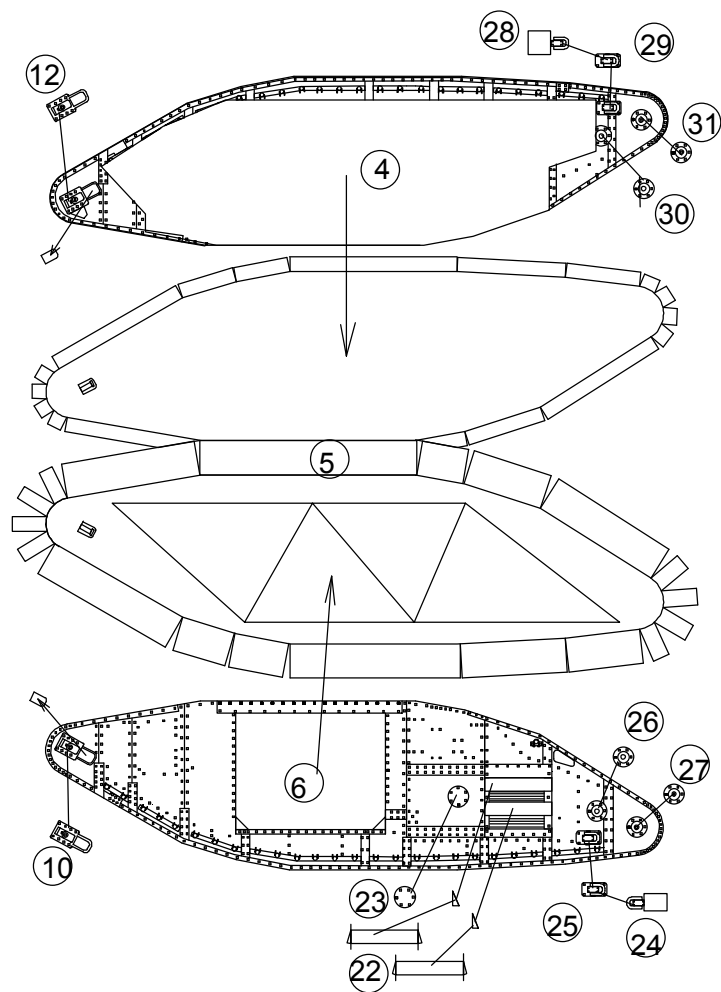
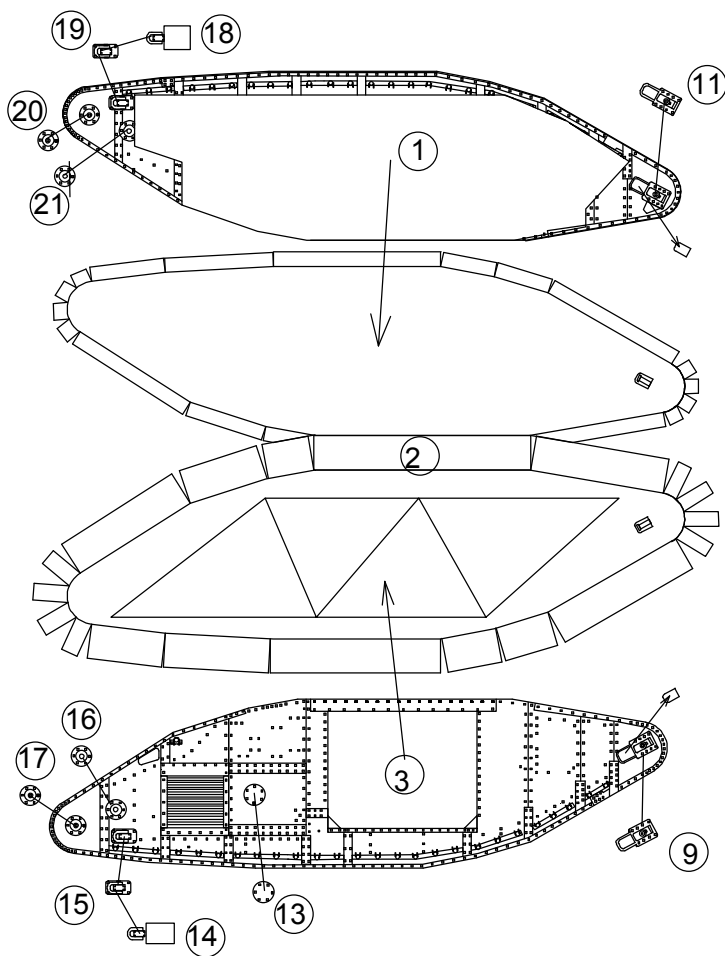
32 33

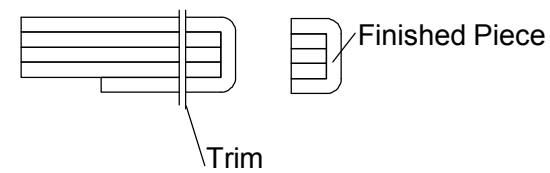
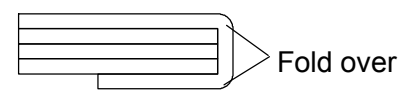
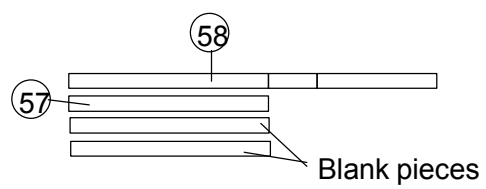
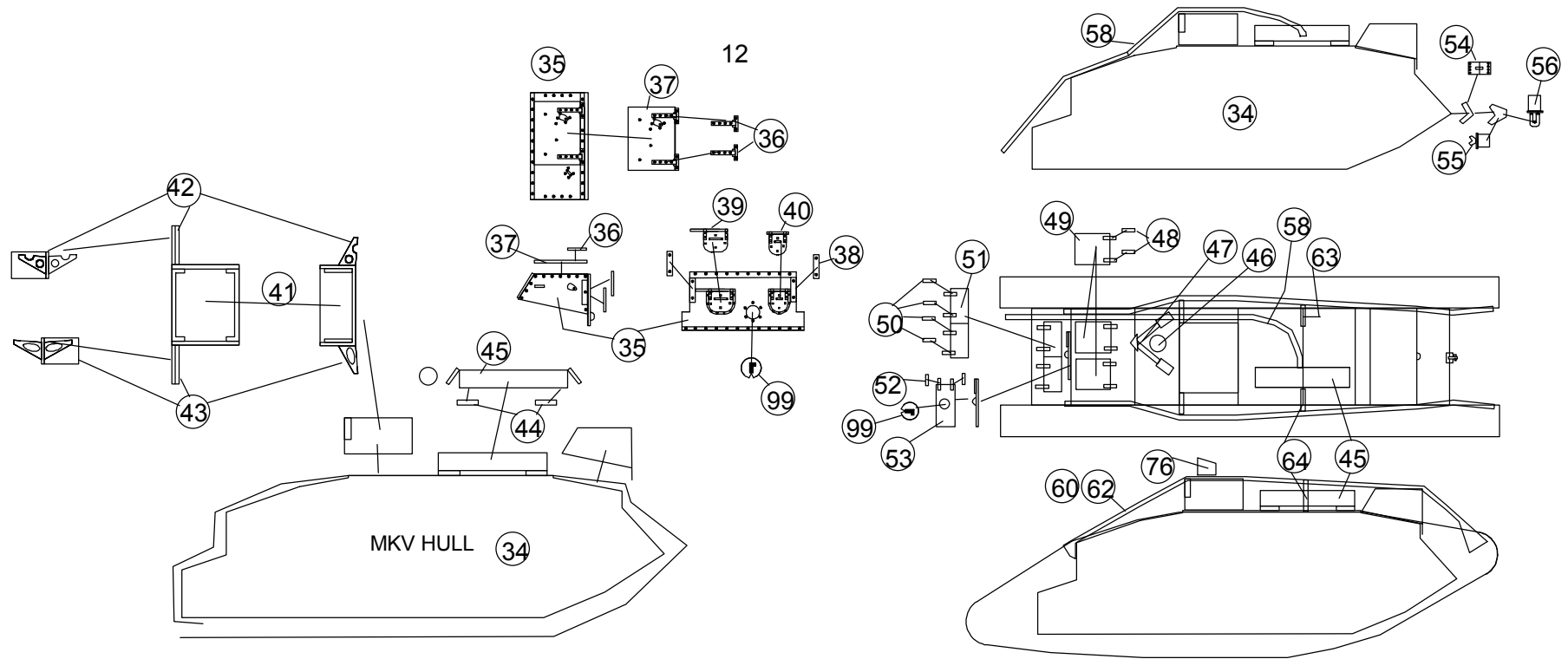


Heavy Tank MkV
UK WWI
Scale 1/72
copyright 2006 Clifton W. McCullough
(Parts Sheet 2 of 3)

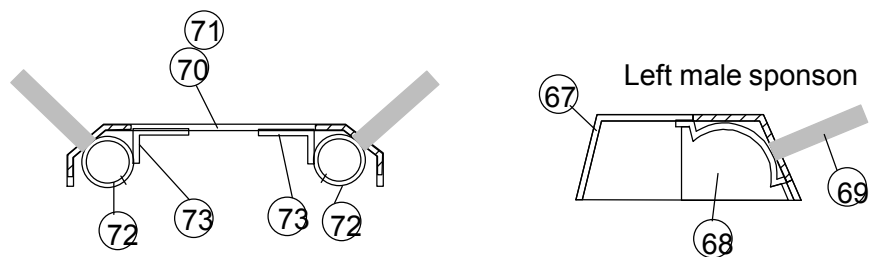
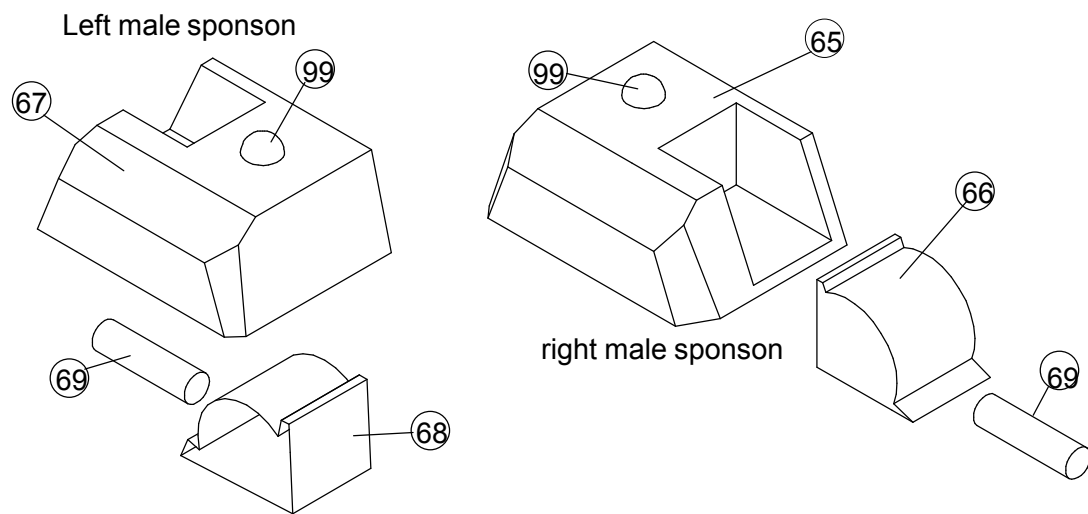


Heavy Tank MkV
UK WWI
Scale 1/72
copyright 2006 Clifton W. McCullough
(Parts Sheet 3 of 3)





Exhaust Pipe (57, 58) as shown
 Rails (59 & 60, 61 & 62) are similar



Female sponson (right or left)

