

Canon Pop-up Card (Halloween) : Assembly Instructions

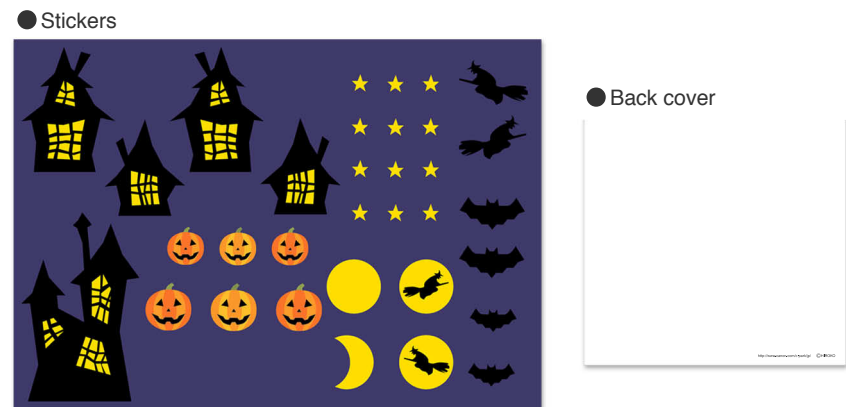
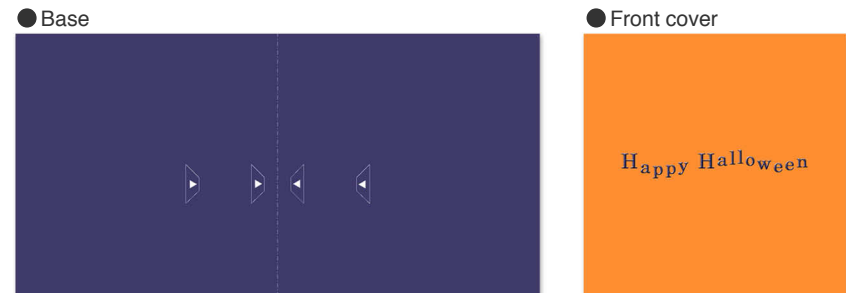
Canon® is a registered trademark of Canon Inc. © HIROKO

PAPER CRAFT

<http://www.canon.com/c-park/en/>



1 Cut out the parts and crease them along the fold lines indicated.



Assembly Instructions

..... **Mountain fold** (dotted line) ——— **Scissors line** (solid line)
*Make a mountain fold. *Cut along the line.

- - - - - **Valley fold** (dashed and dotted line) ——— **Cut in line** (solid line)
*Make a valley fold. *Make a cut.

▲ **Black triangle**
Glue here

△ **White triangle**
Glue the back



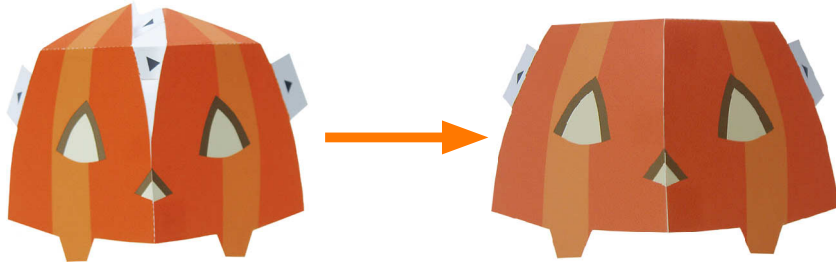
scissors, paste, a used ballpoint pen (tracing along the fold lines makes them easier to fold)

Caution: Glue, scissors, and other tools may be dangerous to young children so be sure to keep them out of the reach of young children.

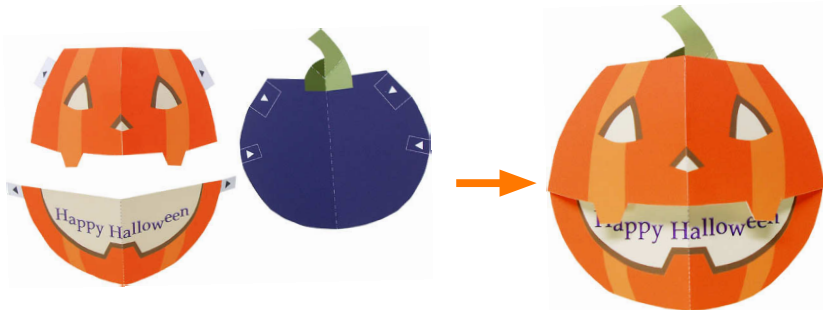
Canon Pop-up Card (Halloween) : Assembly Instructions

Canon® is a registered trademark of Canon Inc. © HIROKO

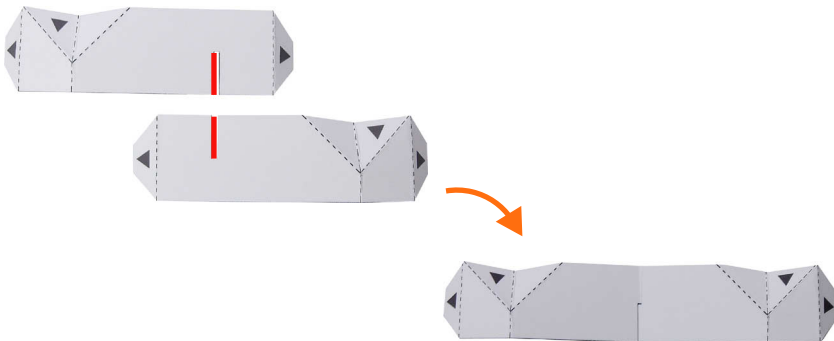
2 Match up the edges of pumpkin parts A and B and glue them together to make the top part of the head.



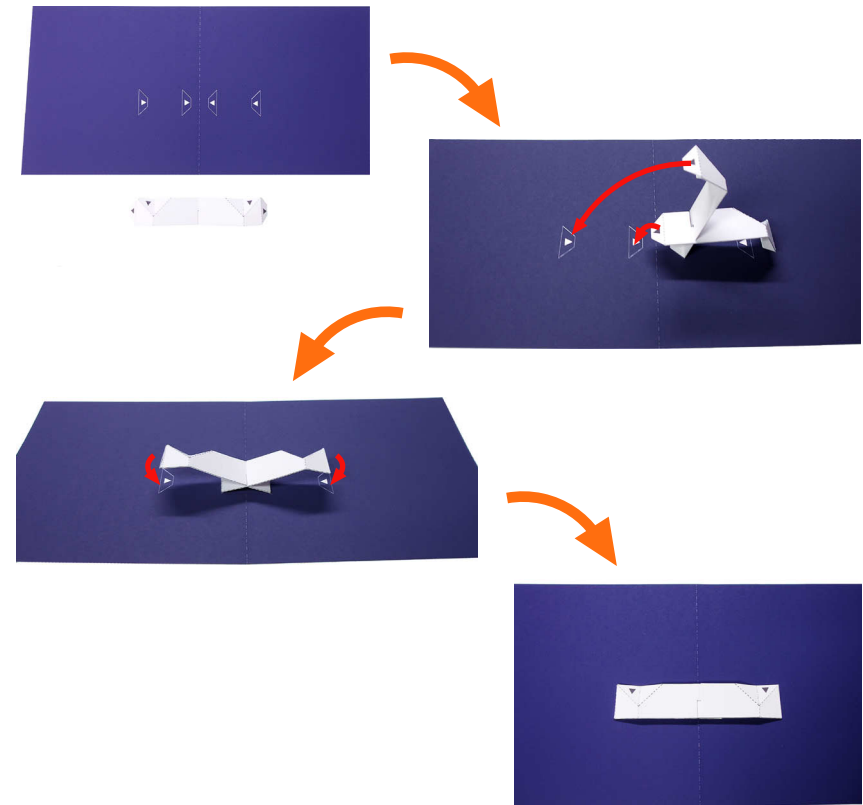
3 Take pumpkin part C and assembly 2 and glue them at the glue points onto pumpkin part D to complete the pumpkin head.



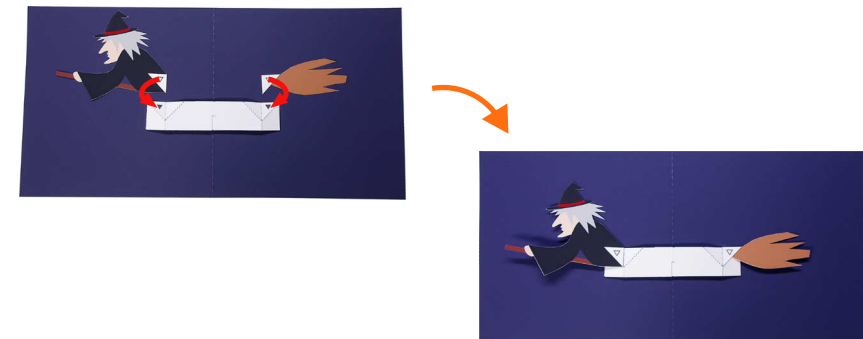
4 Cut slits in the supports along the lines shown here in red and then fit the two pieces together.



5 Glue the supports from the inside onto the backing paper at the glue points.



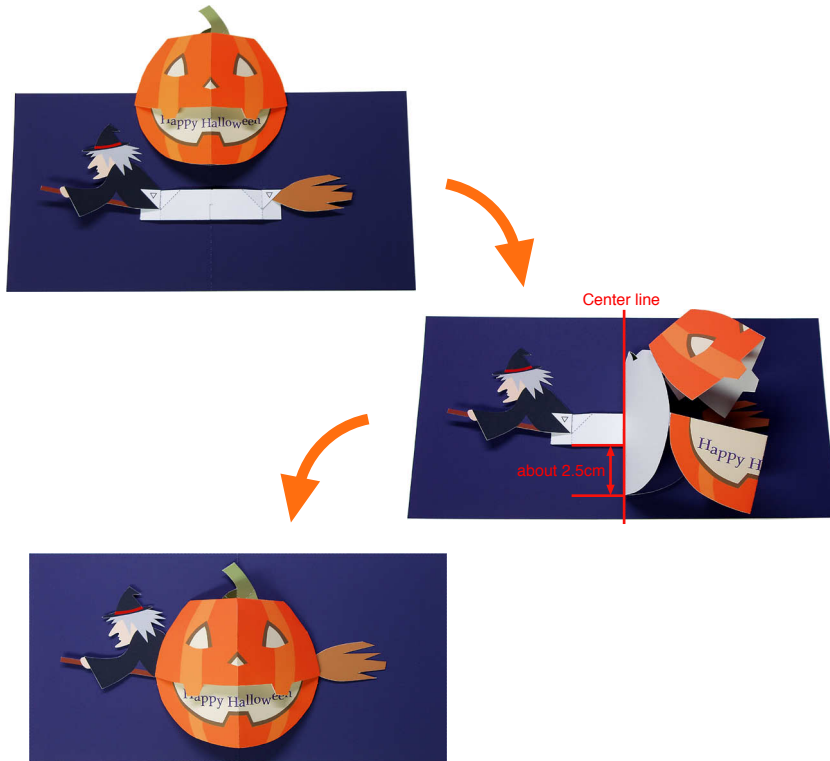
6 Glue the witch and the broomstick onto the glue points on assembly 5.



Canon Pop-up Card (Halloween) : Assembly Instructions

Canon® is a registered trademark of Canon Inc. © HIROKO

7 Fold the pumpkin head assembly 3 along the centre line shown here in red and glue each side onto the broomstick.



8 Stick the stickers as you wish onto 7.



9 Paste the coloured front cover onto the back of the left hand side of the base.



10 Finally, paste the back cover onto the back of the right hand side of the base.

