

CREATIVE PARK

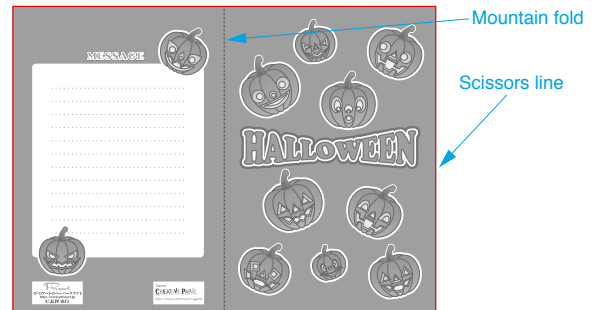
<http://www.canon.com/c-park/>


Assemble the card

Use pattern: Page2, Page3.

① Cut out A1 by cutting along the lines.

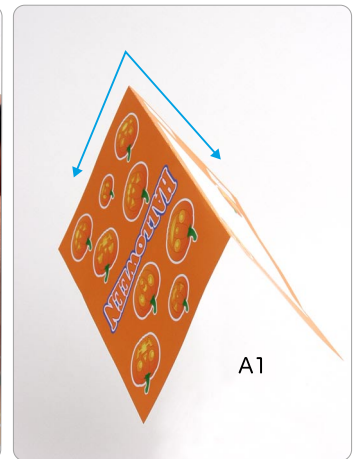
★ Cut along the line marked ———.



A1Card ← Parts No. / Parts name

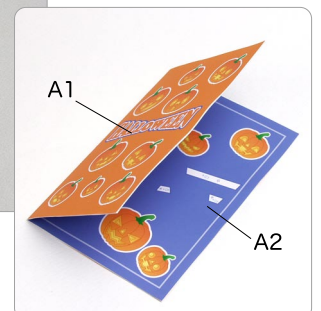
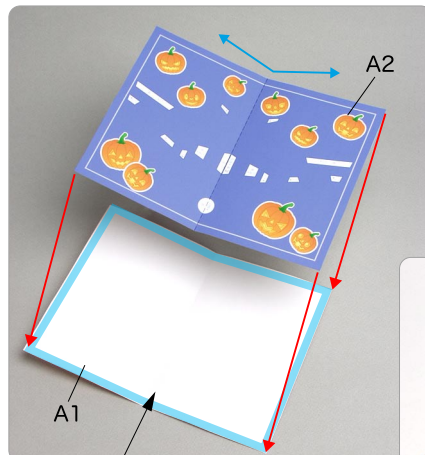
② Make a mountain fold on A1.

★ Trace along the mountain fold line with a stencil pen, scoring it to make it easier to fold.



③ Attach A1 and A2, and the card is complete.

Using the photo as a guide, attach in the direction of the arrow.



Check that A1 and A2 are the right way up, place some paste on the blue area of the back side, and attach them together.

Tools

Scissors

Paste, or woodwork glue

Stencil pen, or bodkin

Ruler

Notation Key

| | |
|-----------|---------------------------------|
| ————— | Scissors line |
| | Mountain fold |
| - - - - - | Valley fold |
| + | Glue spot |
| ⊙ | Glue reverse side |
| A1、B1 | Parts No. |
| +A1、+B1 | Numbers of parts to be attached |

◆ The Assembly instructions are divided into three blocks:
A (Card), B (Jack-o'-lantern) and C (Decorations, Black cat and Witch).
Follow the instructions for each block to assemble your card.

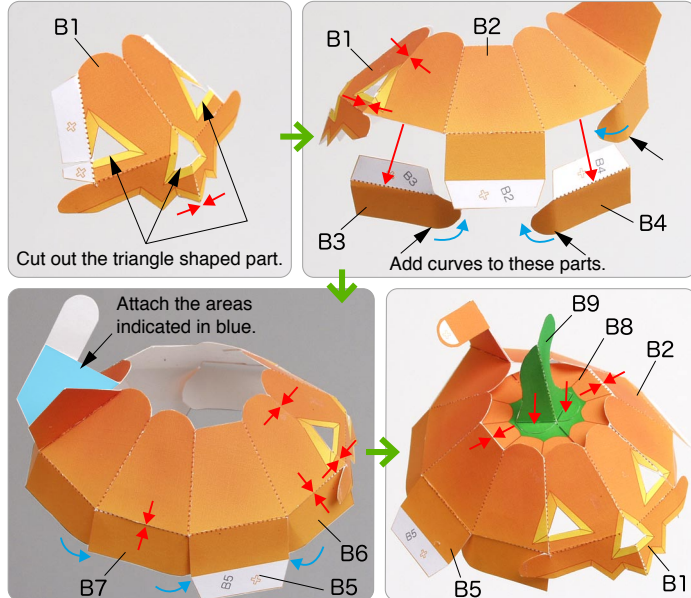
<Caution>

- ※ Keep scissors and glue away from small children.
- ※ Be careful not to cut your fingers when using scissors.

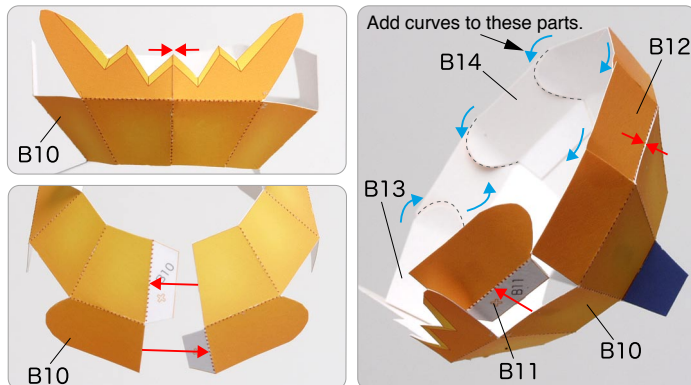
B Make the jack-o'-lantern

Use pattern: Page4, Page5.

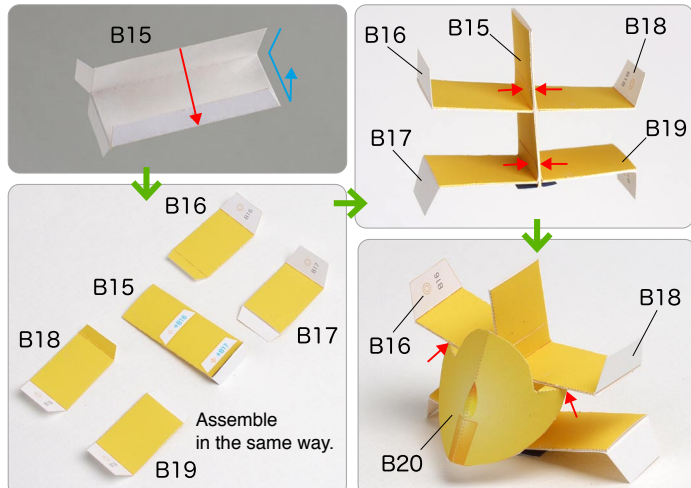
① Assemble B1, and attach parts B2 through B9.



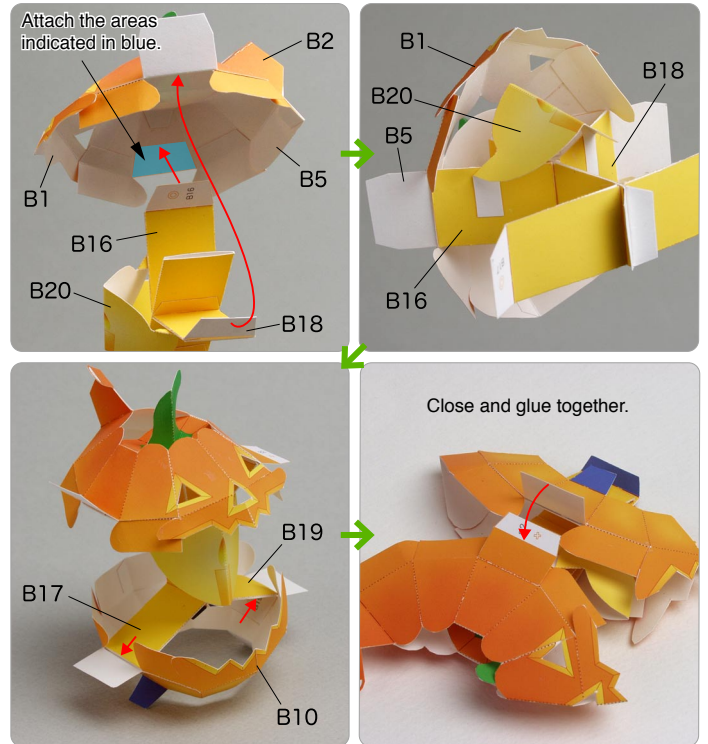
② Assemble B10, and attach parts B11 through B14.



③ Attach the parts from B15 to B20.

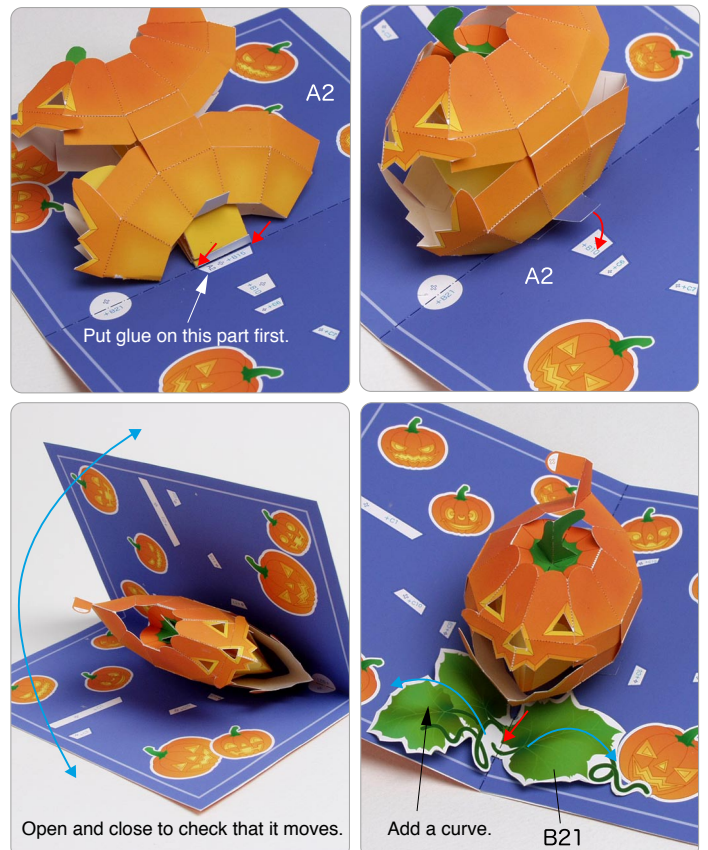


④ Attach the Jack-o'-lantern and the joint together.



⑤ Attach the Jack-o'-lantern and B21 to the card, and your Jack-o'-lantern is complete.

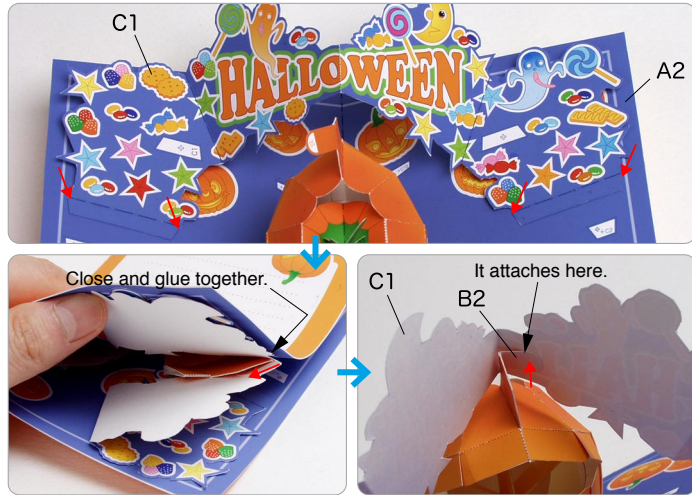
★ After attaching the parts, open and close to check if the card opens smoothly.



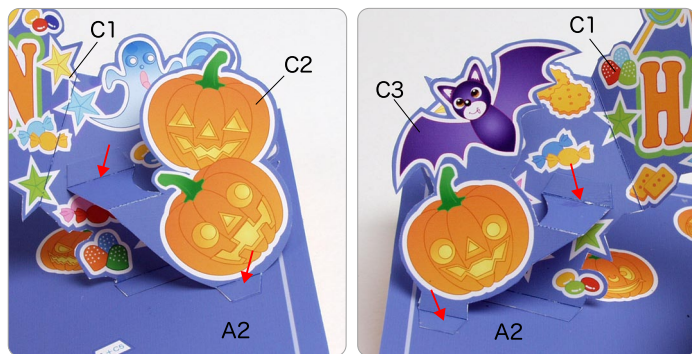
C Make the decorations, black cat and witch

Use pattern: Page6, Page7.

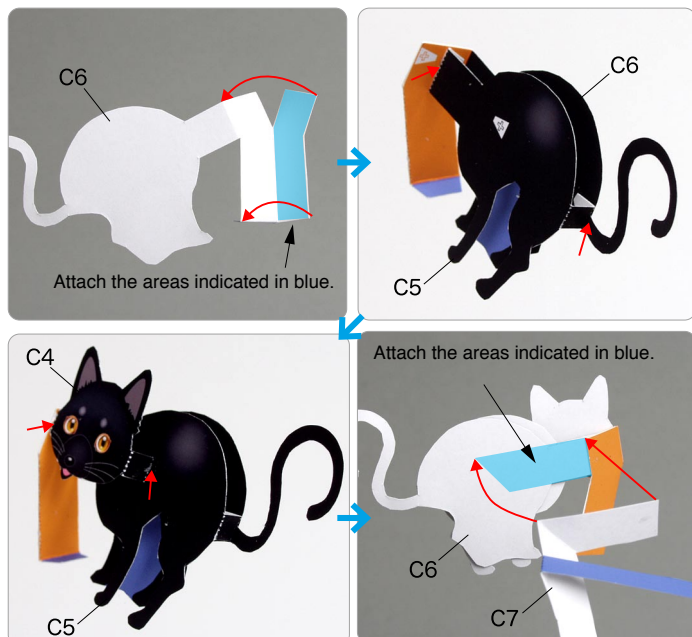
① Attach C1 to the card and Jack-o'-lantern.



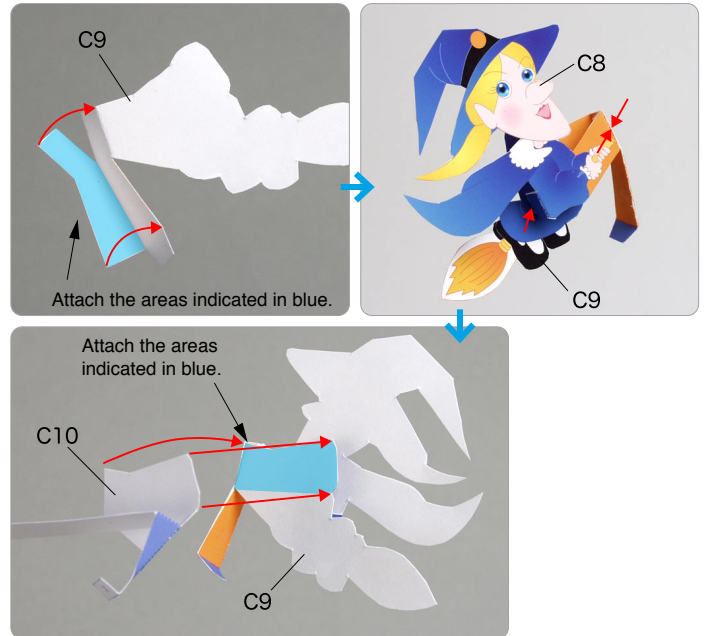
② Glue C2 and C3 to the card and C1.



③ Attach the parts from C4 to C7.



④ Attach the parts from C8 to C10.



⑤ Attach the black cat and witch to the card, and you're done!

