

CREATIVE PARK

<http://www.canon.com/c-park/>



Tools	Notation Key
Scissors	——— Scissors line
Paste, or woodwork glue Mountain fold
Stencil pen, or bodkin	- - - - - Valley fold
Ruler	+ Glue spot
	○ Glue reverse side
	A1、B1 Parts No.
	+A1、+B1 Numbers of parts to be attached

- ◆ The Assembly instructions are divided into three blocks:
A (Card), B (Jack-o'-lantern) and C (Decorations, Black cat and Witch).
Follow the instructions for each block to assemble your card.

<Caution>

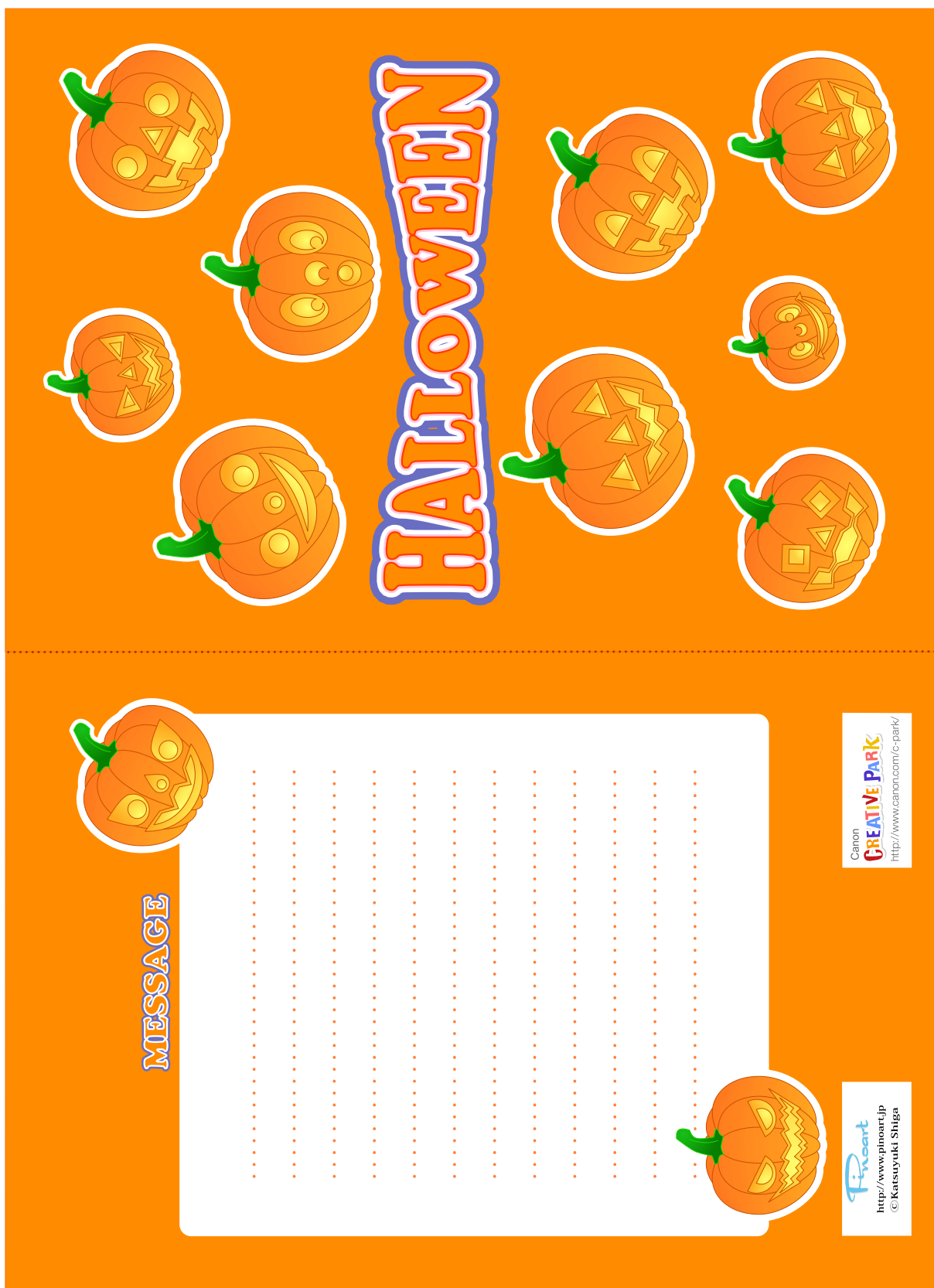
- ※ Keep scissors and glue away from small children.
- ※ Be careful not to cut your fingers when using scissors.





Card parts

Refer to Assembly Instructions: Page1.

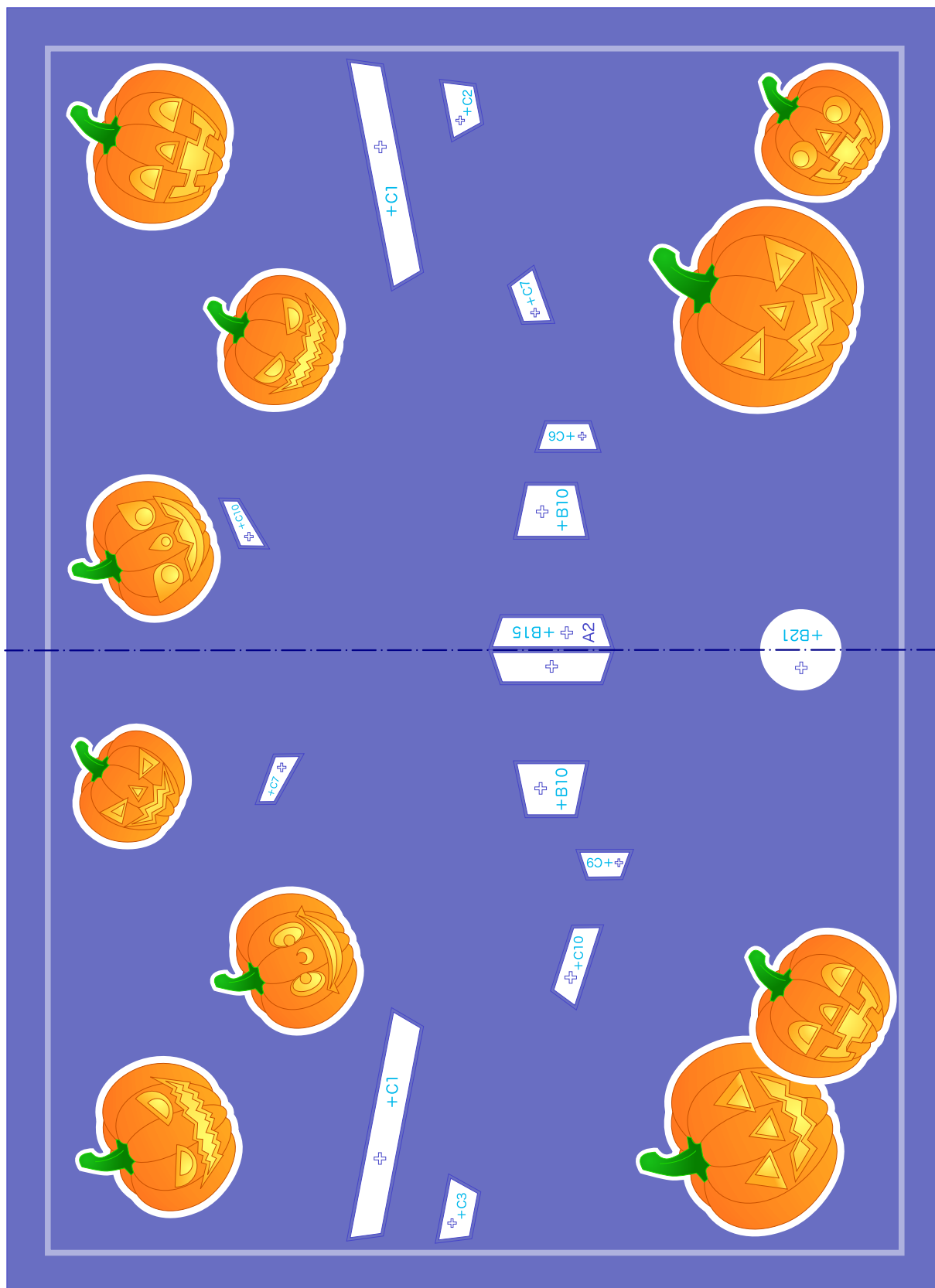


A1 Card



Card parts

Refer to Assembly Instructions: Page1.

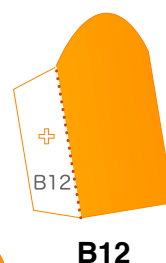
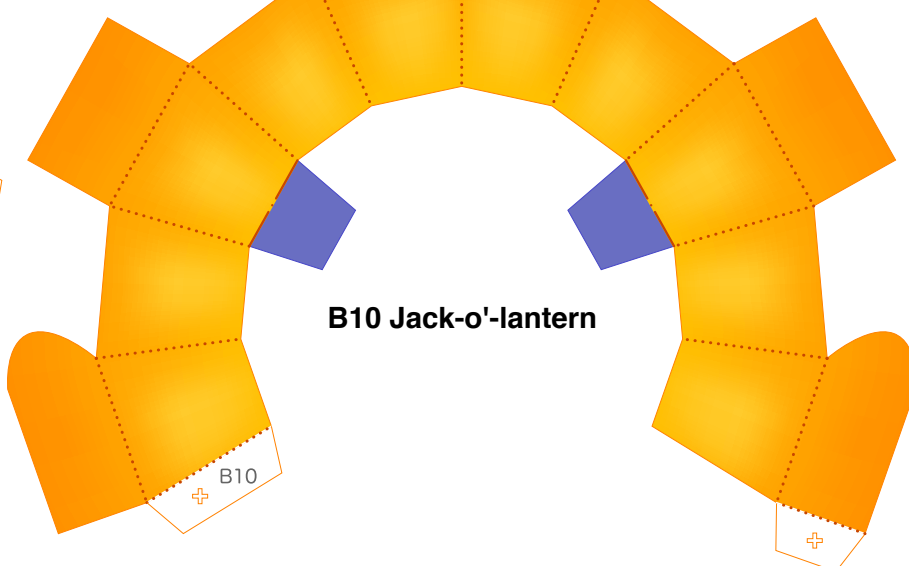
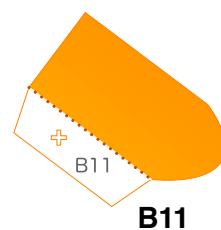
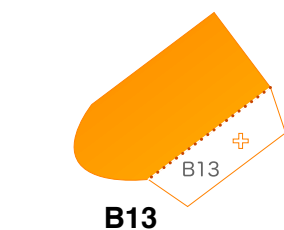
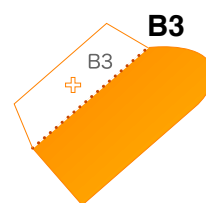
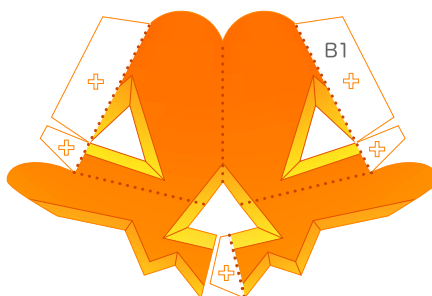
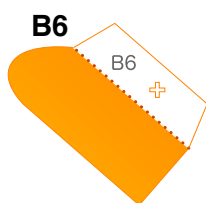
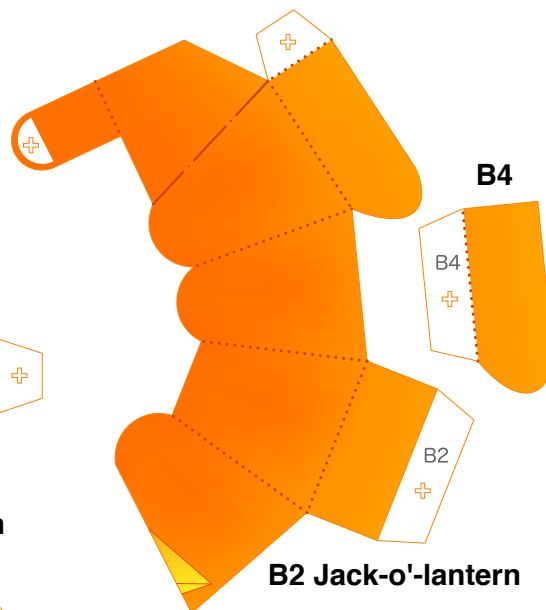
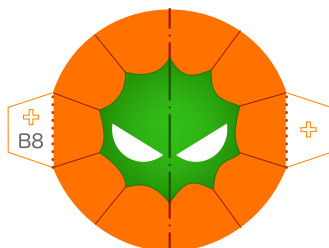
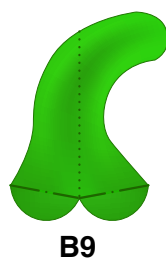
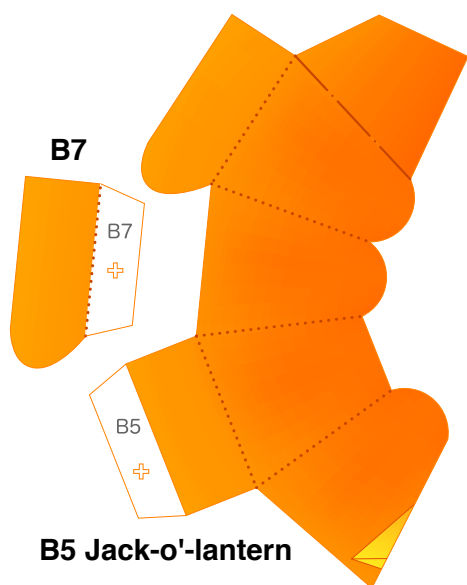


A2 Card



Jack-o'-lantern parts

Refer to Assembly Instructions: Page2.

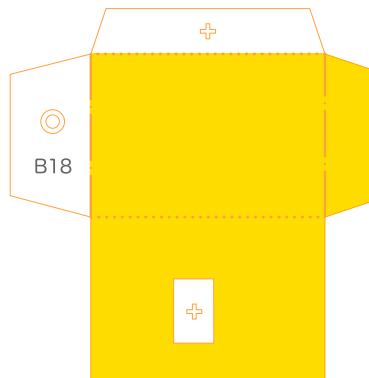




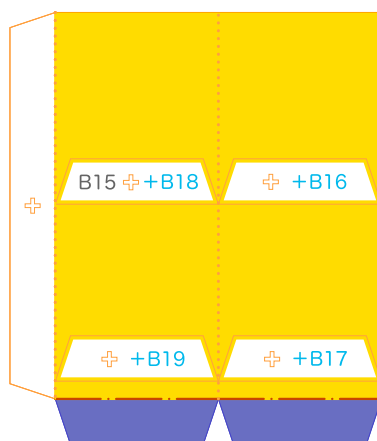
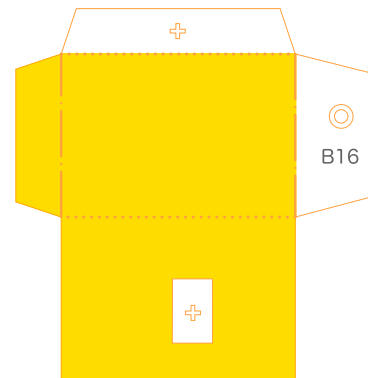
Jack-o'-lantern parts

Refer to Assembly Instructions: Page2.

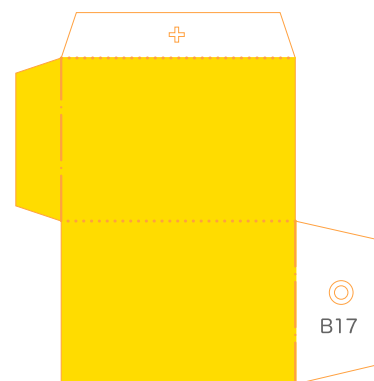
B18 Joint



B16 Joint

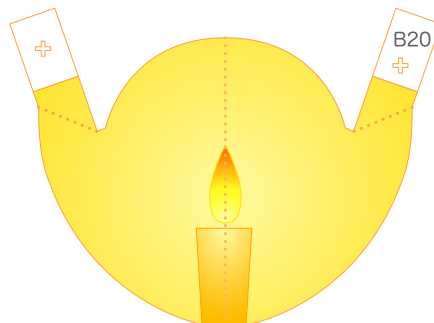
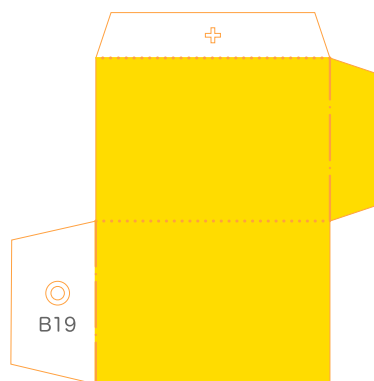


B15 Joint

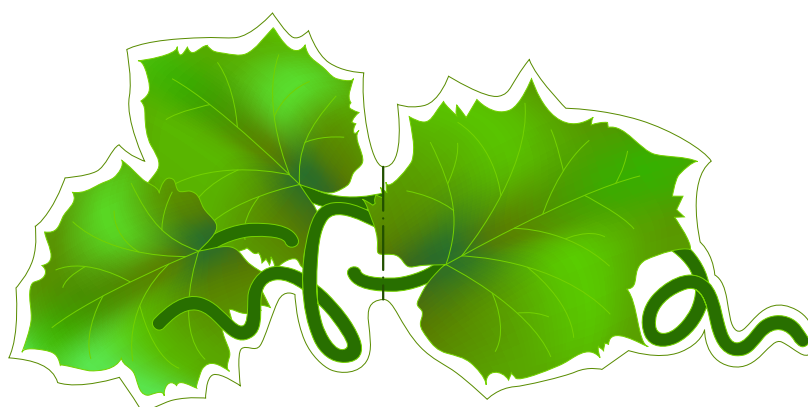


B17 Joint

B19 Joint



B20 Candle



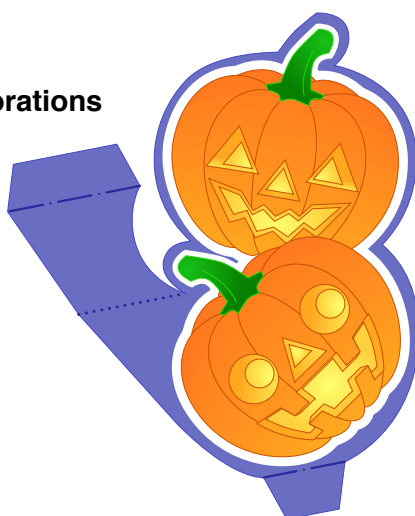
B21 Pumpkin leaves



Decorations parts

Refer to Assembly Instructions: Page3.

C2 Decorations



C3 Decorations



C1 Decorations



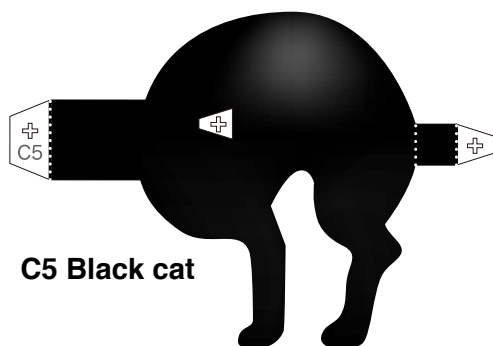


Black cat and witch parts

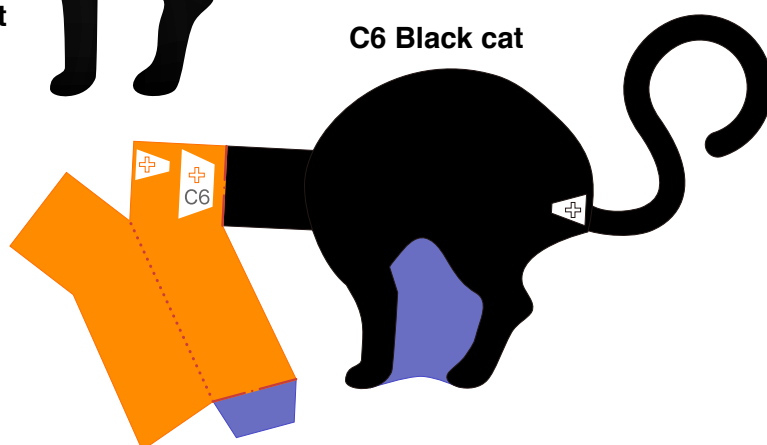
Refer to Assembly Instructions: Page3.



C4 Black cat



C5 Black cat



C6 Black cat



C7 Joint



C9 Witch



C8 Witch



C10 Joint